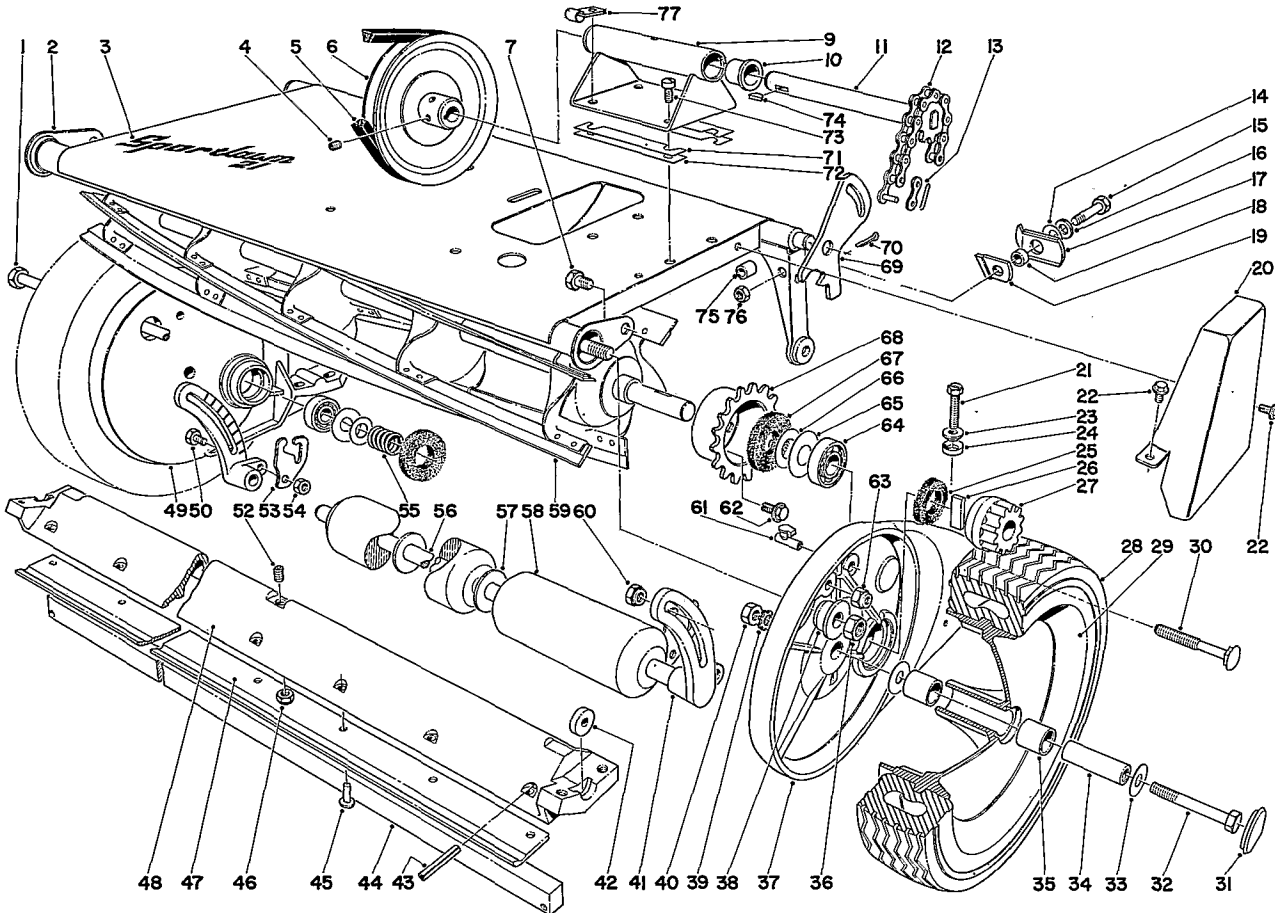


TORO®

18" — Model Nos. 10013-800001 Thru 200001 & Up
 21" — Model Nos. 10313-800001 Thru 200001 & Up
 21" — Model Nos. 10323-800001 Thru 200001 & Up

PARTS CATALOG

18" & 21" SPORTLAWN



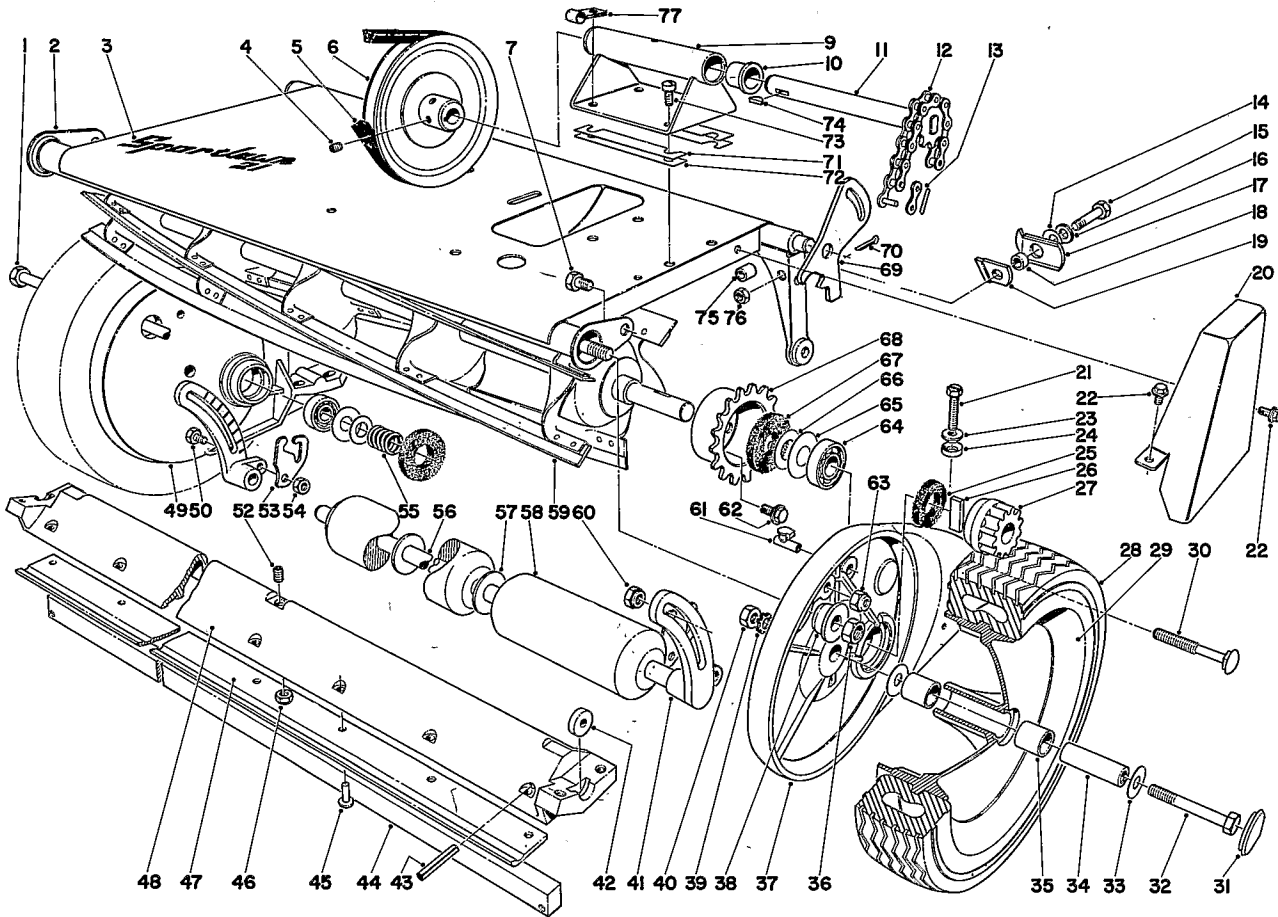
MAIN FRAME ASSEMBLY

Ref. No.	Part No.	Description	No. Used	
			18"	21"
1	5-4801	Tie Rod	1	
	5-4802	Tie Rod		1
2	5-1541	Platform W.A.	1	
	5-1586	Platform W.A.		1
3	3-5648	Decal	1	
	3-5652	Decal (Lo-Cut)		1
	3-5651	Decal (Hi-Cut)		1
4	3245-1	Set Screw	2	2
5	271-17	V-Belt	1	1
6	5-1494	Pulley	1	1
7	3210-3	Screw	2	2
9	3-7459	Countershaft Housing (Incl. Ref. 10)	1	
	3-7469	Countershaft Housing (Incl. Ref. 10)		1
10	3-4066	Bushing	2	2
11	5-1551	Countershaft	1	

Ref. No.	Part No.	Description	No. Used	
			18"	21"
	5-1587	Countershaft		1
12	5-1552	Chain	1	1
13	2710-21	Connecting Link	1	1
14	3290-213	Spring Washer	2	2
15	3210-15	Screw	2	2
16	3256-23	Washer	2	2
17	5-1536	Stop Lever	2	2
18	5-1557	Spacer	2	2
19	5-1540	Clip	1	1
	5-1538	Clip	1	1
20	3-5593	Chain Guard	1	1
21	5-1497	Adjusting Screw	4	4
22	32140-32	Self Tapping Screw	2	2
23	5-1515	Upper Spher. Washer	4	4
24	5-1516	Lower Spher. Washer	4	4
25	5-1522	Felt Washer	2	2
26	2-3620	Ratchet Dog	2	2

COPYRIGHT 1971 BY
 TORO MANUFACTURING CORP.
 MINNEAPOLIS, MINN. 55420 — U.S.A.

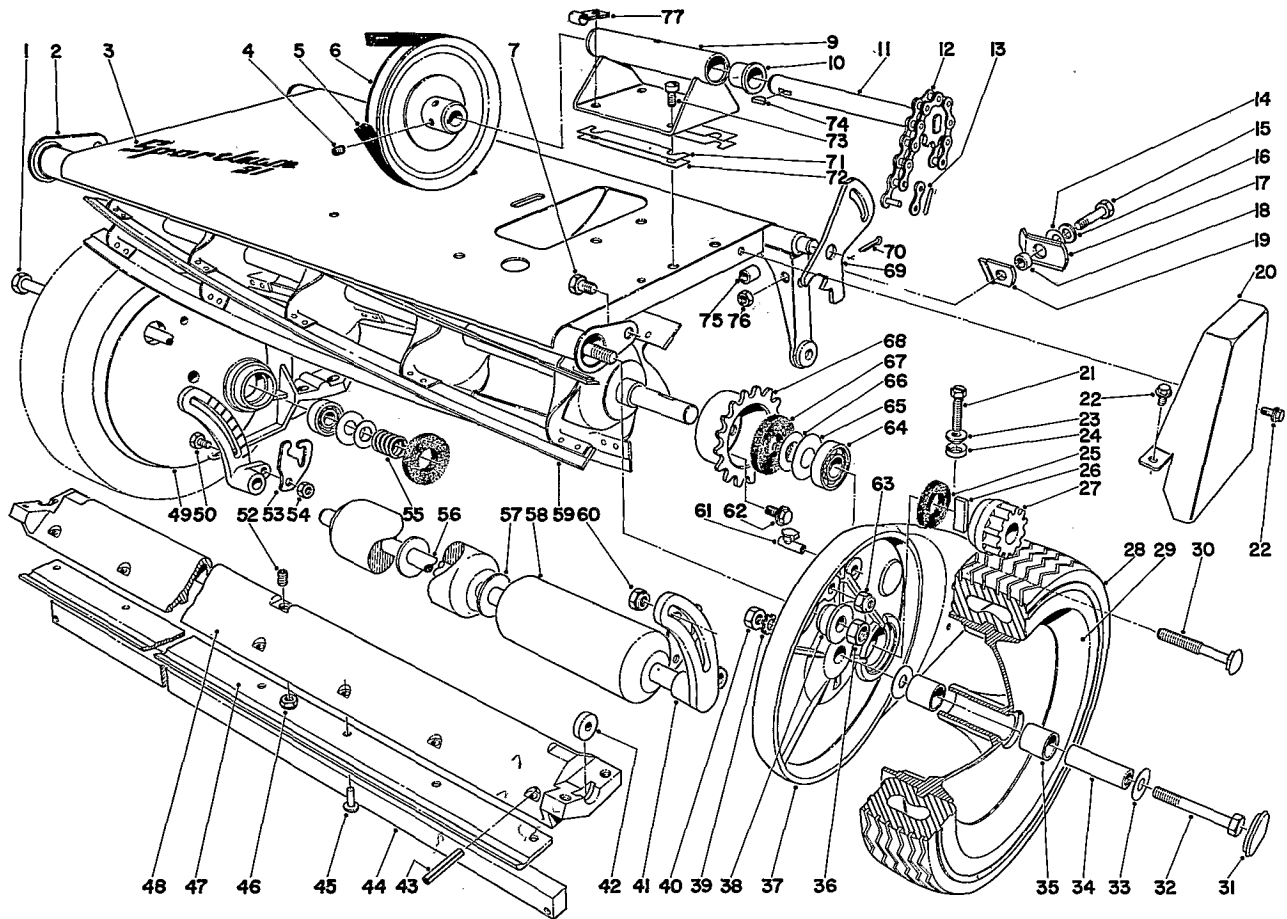
Price \$1.00



MAIN FRAME ASSEMBLY

Ref. No.	Part No.	Description	No. Used	
			18"	21"
27	2-2209	Pinion Kit (Consisting of Right & Left Pinions & Dogs)	1	1
28	4-2580	Tire	2	2
	3-3668	Tire (Hi-Cut Model)		2
29	3-7389	Wheel Assy. (Incl. Ref. No. 35)	2	2
30	3-7253	Carriage Bolt	2	2
31	3-4007	Plug Button	2	2
32	5-1513	Spindle Bolt	2	2
33	5-0744	Spindle Washer	4	4
34	5-1521	Spindle	2	2
35	256-32	Bushing	4	4
36	32146-2	Nut	1	1
37	3-4789	Side Plate Assy., L.H. (Incl. Items 61 & 64)	1	1
38	3-4327	Spacer Tube End	2	2
39	3255-16	Lockwasher	2	2
40	3220-4	Jam Nut	2	2
41	2-3969	Roller Bracket Set Right and Left Hand	1	1
42	5-1517	Bed Bar Pivot	2	2
43	32121-12	Roll Pin		2
44	5-3498	Adjusting Rod		1
45	3290-57	Rivet	6	

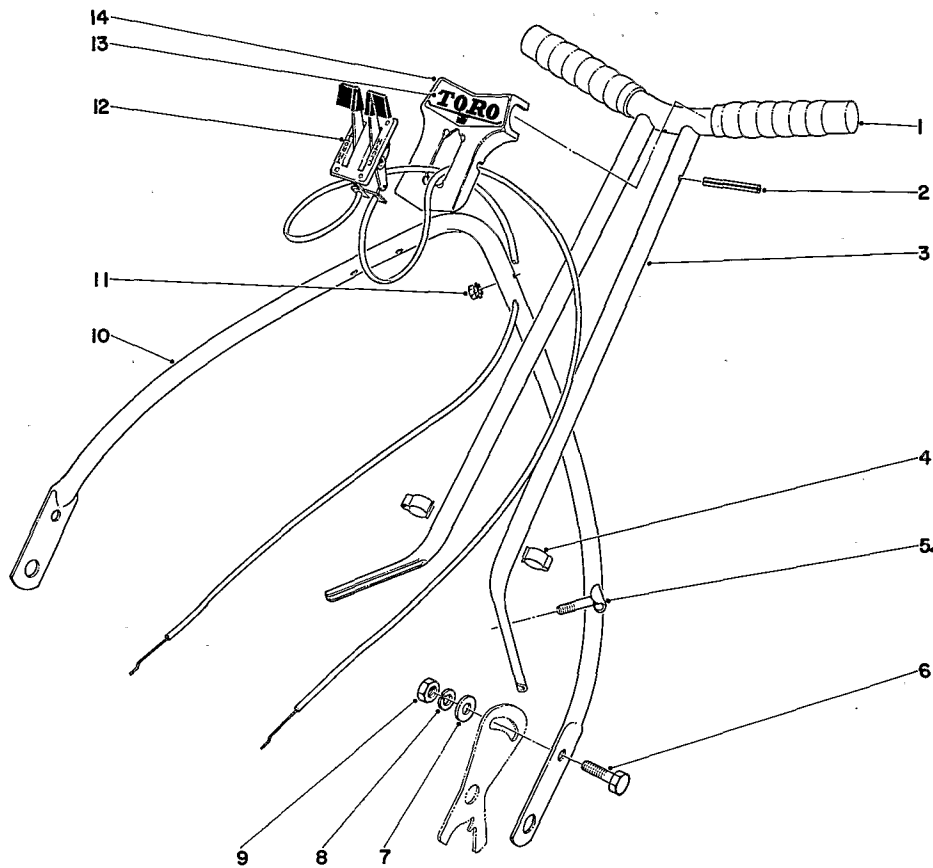
Ref. No.	Part No.	Description	No. Used	
			18"	21"
	3290-46	Rivet		7
46	32127-24	Nut		1
47	5-1544	Bed Knife	1	
	5-1514	Bed Knife (Lo-Cut)		1
	3-3068	Bed Knife (Hi-Cut)		1
48	5-1543	Bed Bar	1	
	4-1999	Bed Bar Assy. (Incl. Ref. 43 thru 48 & 52)		1
49	3-7369	Side Plate Assy., R.H. (Incl. Ref. 61 & 64)	1	1
50	329-3	Capscrew	2	2
52	3245-9	Setscrew		1
53	3-3856	Catcher Hook	2	2
54	32146-1	Stop Nut	2	2
55	3-3081	Spring	1	1
56	5-1554	Roller Shaft	1	
	5-1510	Roller Shaft		1
57	3256-6	Washer	2	2
58	5-1553	Roller Section	3	
	5-1511	Roller Section		3
59	4-7349	Reel Assy.	1	
	4-7329	Reel (Lo-Cut)		1
	4-7339	Reel (Hi-Cut)		1
60	5-1505	Roller Nut	2	2
61	301-2	Oiler	2	2



MAIN FRAME ASSEMBLY

Ref. No.	Part No.	Description	No. Used	
			18''	21''
62	32140-16	Screw	3	3
63	32146-4	Nut	2	2
64	251-30	Bearing	2	2
65	5-1520	Bearing Seal	2	2
66	5-1078	Washer	2	2
67	5-1518	Felt Washer	2	2
68	5-1572	Reel Sprocket	1	
	3-3065	Reel Sprocket		1
69	5-5250	Handle Bracket	1	1
	5-5260	Handle Bracket, 21'' Sportlawn Hi Cut		1
70	3272-11	Cotter Pin	1	1
71	5-1500	Shim	2	
	5-1588	Shim		4
72	5-1498	Shim	2	
73	32113-18	Fil. Hd. Mach. Screw	4	4
74	3257-5	Woodruff Key	1	1

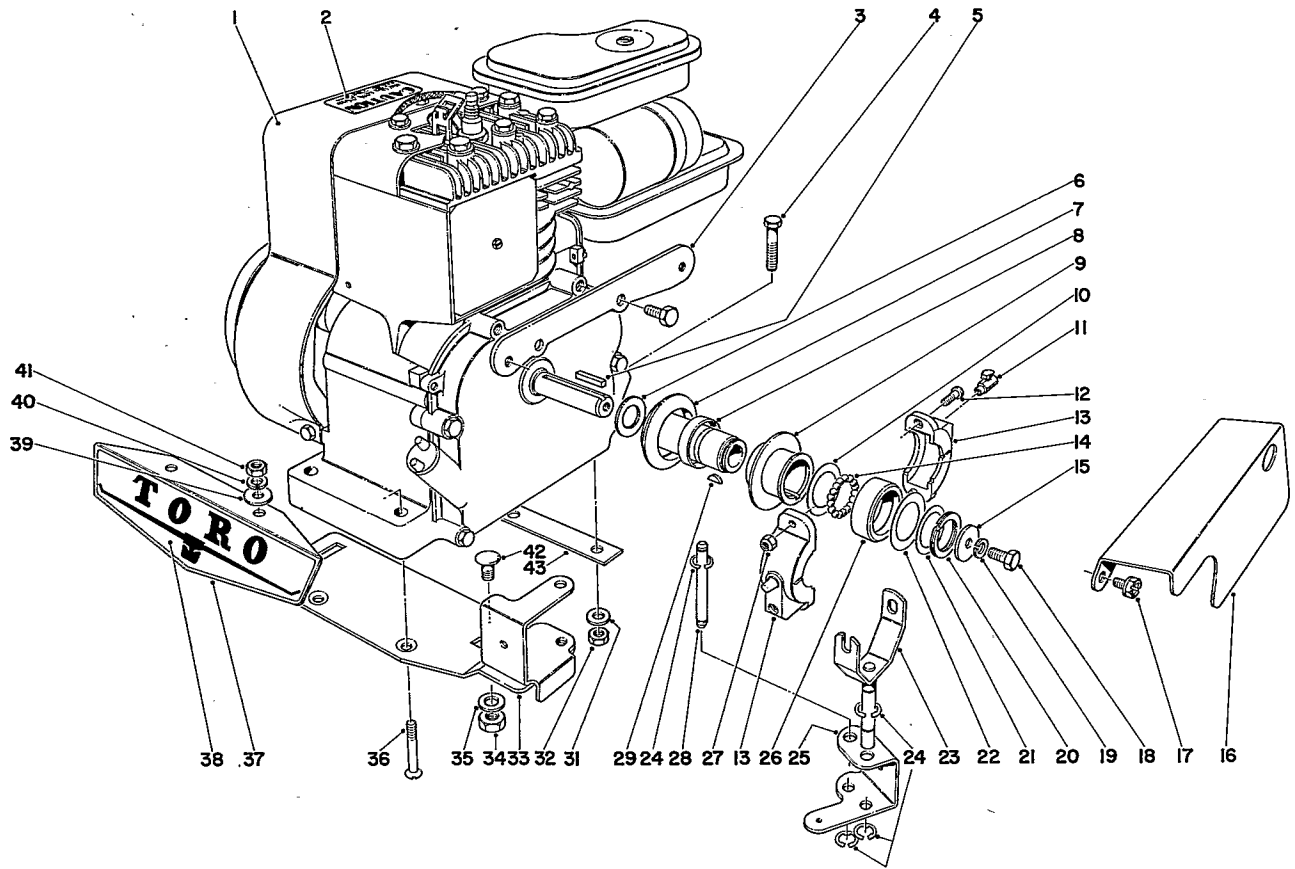
Ref. No.	Part No.	Description	No. Used	
			18''	21''
75	5-1537	Spacer	2	2
76	32146-4	Nut	2	2
	3-7449	C'rs shaft Assy. (Incl. Ref. 4, 6, 9-11 & 74)		1
	3-7429	Bed Knife & Bed Bar Assy. (Incl. Ref. 45, 47 & 48)	1	
	5-3501	Bed Knife & Bed Bar Assy. (Incl. Ref. 43-48 & 52) (Lo-Cut)		1
	5-3497	Bed Knife & Bed Bar Assy. (Incl. Ref. 43-48 & 52) (Hi-Cut)		1
77	2412-32	Clutch Control Clip	1	1



HANDLE ASSEMBLY

Ref. No.	Part No.	Description	No. Used	
			18''	21''
1	5-1994	Handle Grip	2	2
2	32121-10	Roll Pin	1	1
3	3-8340	Upper Handle	1	1
4	218-75	Clip	2	2
5	3-2654	Bolt	4	4
6	3210-3	Capscrew	2	2
7	3256-23	Washer	2	2
8	3253-4	Lockwasher	2	2

Ref. No.	Part No.	Description	No. Used	
			18''	21''
9	3219-2	Nut	2	2
10	3-5597	Lower Handle	1	
	3-5598	Lower Handle		1
11	32149-2	Nut	4	4
12	5-4295	Control Assembly	1	1
13	3-5707	Decal	1	1
14	3-5595	Cover Plate	1	1

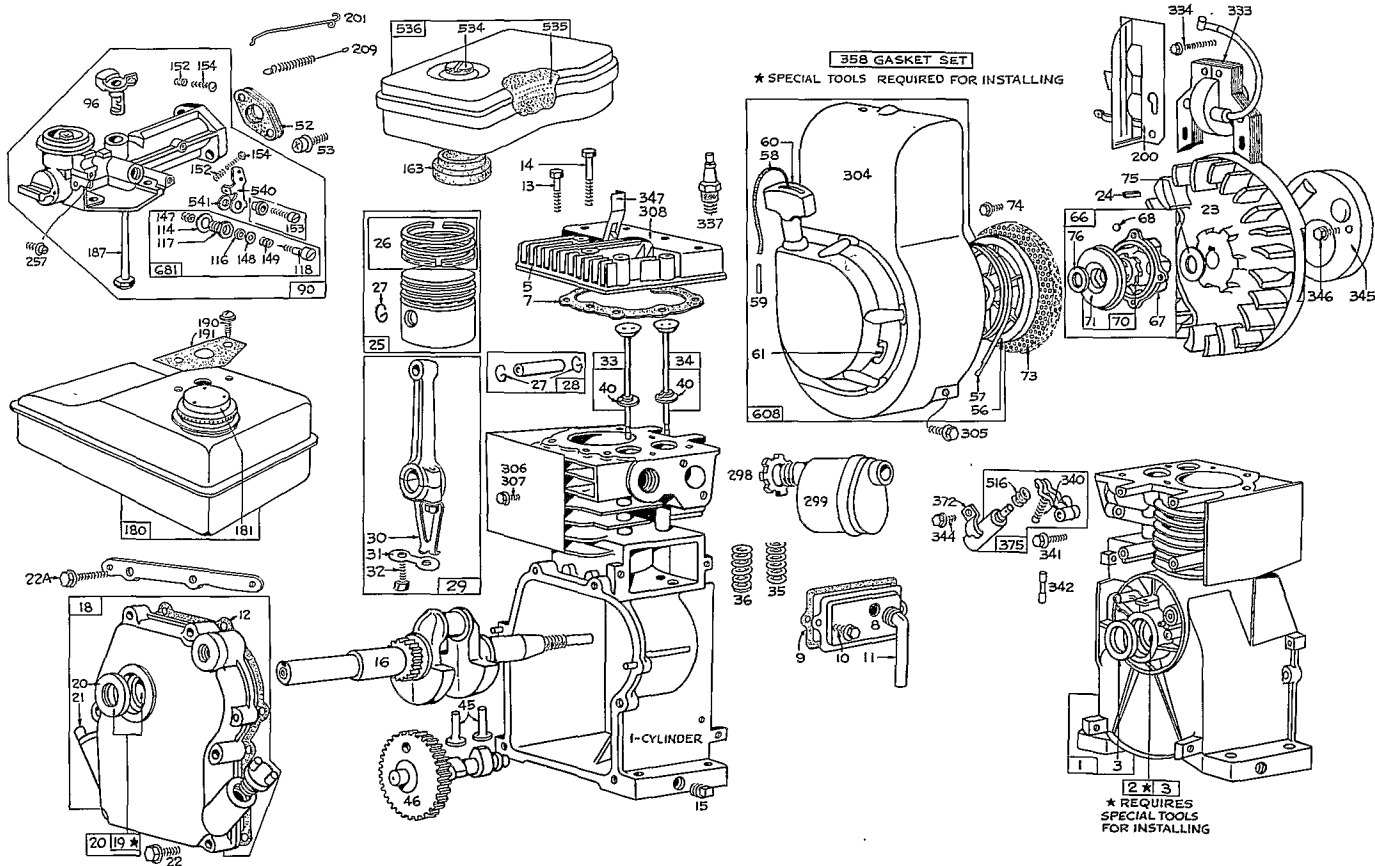


ENGINE ASSEMBLY

Ref. No.	Part No.	Description	No. Used	
			18''	21''
1	221-90	Engine	1	1
2	3-7644	Decal	1	1
3	3-7658	Bracket Belt Guard	1	1
4	3210-15	Capscrew	2	2
5	5-1077	Key	1	1
6	5-1574	Washer	1	1
7	5-1558	Clutch Body	1	1
8	5-1546	Idler Bushing	1	1
9	5-1545	Sliding Flange	1	1
10	5-1548	Thrust Washer	1	1
11	5-1555	Oil Cap	1	1
12	3250-4	Rd. Hd. Mach. Screw	2	2
13	3-3517	Slip Ring	2	2
14	255-5	Steel Ball	18	18
15	4-8620	Washer	1	1
16	3-7661	Belt Guard	1	1
17	32140-39	Screw	2	2
18	329-4	Screw	1	1
19	3253-3	Lockwasher	1	1
20	32120-14	Snap Ring	1	1
21	5-1550	Check Washer	1	1
22	5-1226	Washer	1	1

Ref. No.	Part No.	Description	No. Used	
			18''	21''
23	5-4291	Shift Fork Assy.	1	1
24	32120-35	Snap Ring	4	4
25	5-4293	Bracket Shift Fork	1	1
26	5-1547	Shift Collar	1	1
27	3296-1	Nut	2	2
28	3-4031	Pivot Shaft	1	1
29	3257-1	Key	1	1
31	3256-23	Washer	2	2
32	32146-4	Nut	2	2
33	3-5780	Clutch Mounting Plate	1	1
34	32146-5	Nut	2	2
35	3256-23	Washer	2	2
36	3289-10	Screw	2	2
37	3-5602	Name Plate	1	1
38	3-5601	Decal	1	1
39	3256-2	Washer	2	1
40	3253-3	Lockwasher	2	2
41	3219-1	Nut	2	2
42	3230-1	Carriage Bolt	2	2
43	5-4294	Shim	1	1
	2-3029	Clutch Assy. (Incl. Ref. 7-15 & 18-22, 26 & 29)	1	1
*	2-6739	Loose Parts Kit	1	
*	2-6769	Loose Parts Kit, Hi Cut		1
*	4-7249	Loose Parts Kit, Low Cut		1

*Not Illustrated

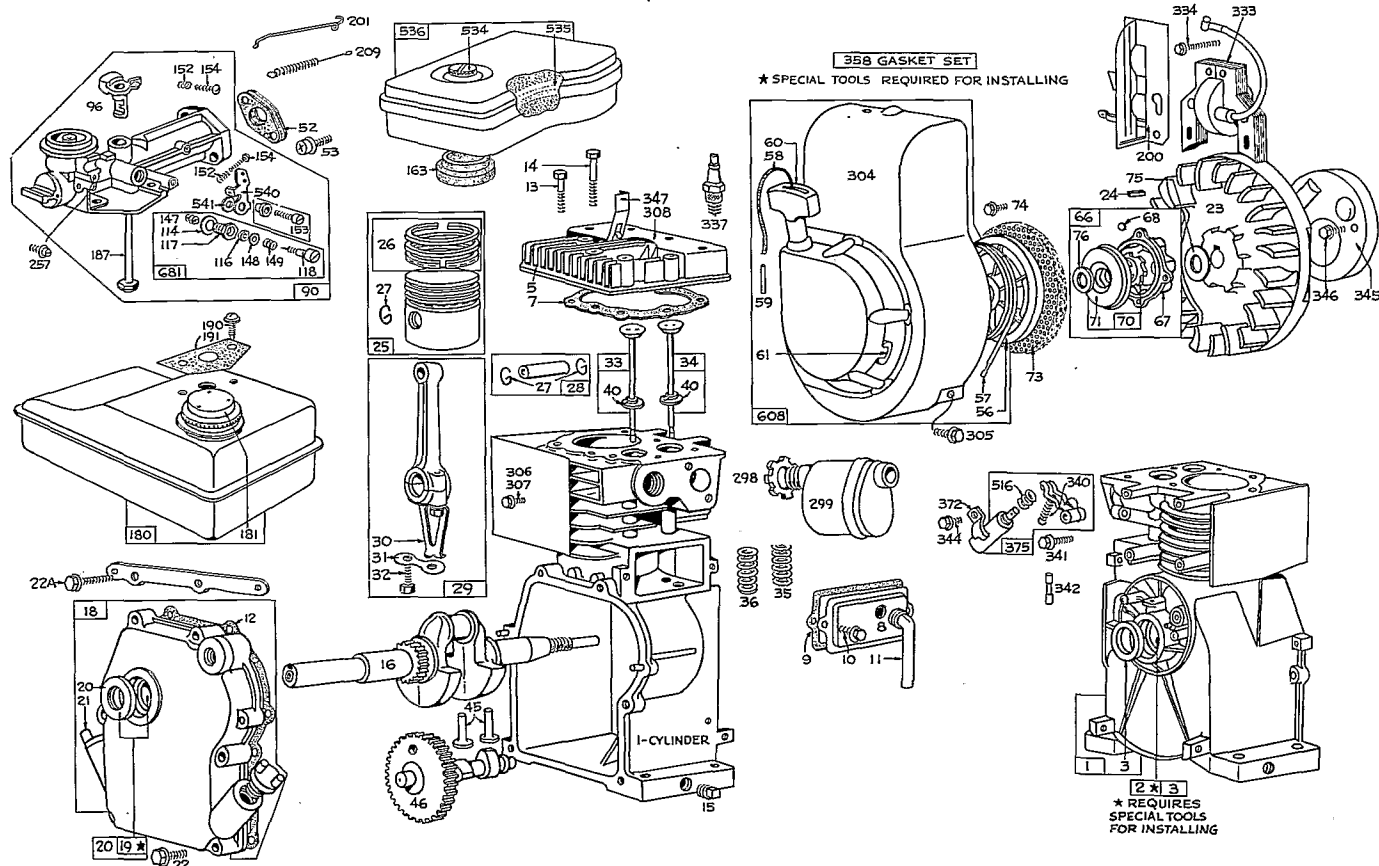


ENGINE MODEL NO. 60102 RECOIL START

Ref. No.	Part No.	Description	No. Used
1	296561	Cylinder Assembly	1
2	293708	Bushing, Cylinder	1
3	89660	Seal, Oil	1
5	210812	Head, Cylinder	1
7	†27670	Gasket, Cylinder Head	1
8	294178	Breather, Valve Chamber	1
9	†27549	Gasket, Valve Cover	1
10	93394	Screw, Breather Mtg. Sem	1
11	66638	Tube, Breather	1
12	†27586	Gasket, Crankcase, .015" Thick (Std.)	1
	†27617	Gasket, Crankcase, .005" Thick	1
	†27618	Gasket, Crankcase, .009" Thick	1
13	93111	Screw, Cyl. Hd. (1-15/16" lg.)	1
14	93113	Screw, Cyl. Hd. (2-5/16" lg.)	1
15	91249	Plug, Pipe, (1/4" Std. Sq. Hd.)	1
16	260271	Crankshaft	1
18	294305	Cover Assy., Crankcase	1
19	293708	Bushing, Crankcase Cover Note: 293708 bushings req. special tools for instal.	1
20	89660	Seal, Oil	1
21	66768	Plug, Oil Filler	1
22	93032	Screw, Crankcase Cover Mounting Sem	1
22A	93466	Screw, Crankcase Cover Mounting Sem	1

Ref. No.	Part No.	Description	No. Used
23	296884	Flywheel, Magneto	1
24	61760	Key, Flywheel	1
25	295587	Piston Assy., Standard	1
	295588	Piston Assy., .010" O.S.	1
	295589	Piston Assy., .020" O.S.	1
	295590	Piston Assy., .030" O.S.	1
	Note: For chrome piston ring set for 2-3/8" bore - std. size - order Part No. 297201		
26	294232	Ring Set, Standard Piston consists of: 210471 ring, piston, compression, top - 210472 ring, piston, compression, center - 210473 ring, piston, oil	1
	294224	Ring Set, .010" O.S. Piston consists of: 210490 ring, piston, compression, top. - 210489 ring, piston, compression, center - 210491 ring, piston, oil	1
	294225	Ring Set, .020" O.S. Piston consists of: 210493 ring, piston, compression, top, .020" O.S. - 210492 ring, piston, compression, center, .020" O.S. - 210494 ring, piston, oil, .020" O.S.	1

†Included in Gasket Set - Part No. 297275



ENGINE MODEL NO. 60102 RECOIL START (Cont'd.)

Ref. No.	Part No.	Description	No. Used
	294226	Ring Set, .030" O.S. Piston consists of: 210496 ring, piston, compression, top, .030" O.S. - 210495 ring, piston, compression, center, .030" O.S. - 210497 ring, piston, oil, .030" O.S.	1
27	26026	Lock, Piston Pin	1
28	298909	Pin Assy., Piston, Std.	1
	298908	Pin Assy., Piston, .005" O.S.	1
29	294300	Rod Assembly, Connecting	1
30	220459	Dipper, Connecting Rod	1
31	220460	Lock, Connecting Rod Screw	1
32	92296	Screw, Connecting Rod	1
33	296676	Valve, Exhaust	1
34	296677	Valve, Intake	1
35	260552	Spring, Intake Valve	1
36	26478	Spring, Exhaust Valve	1
40	93312	Retainer, Valve Spring	1
45	230173	Tappet, Valve	1
46	210453	Gear, Cam	1
52	27355	Gasket, Intake Elbow	2
53	93353	Screw, Carburetor Mtg. Sem	1
56	298738	Pulley, Rewind Starter	1
57	294303	Spring, Rewind Starter	1
58	66694	Rope, Starter	1
59	230228	Pin, Starter Grip	1
60	66728	Grip, Starter Rope	1
61	68618	Bumper, Starter Pulley	1
66	298798	Clutch Assy., Rewind Starter	1

Ref. No.	Part No.	Description	No. Used
67	211383	Housing, Starter Clutch	1
68	63770	Ball, Clutch	1
70	298436	Ratchet, Rewind Starter	1
71	221653	Washer, Clutch Retainer	1
73	221661	Screen, Rotating	1
74	93490	Screw, Rot. Screen Mtg. Sem	1
75	220865	Washer, Spring	1
76	68238	Washer, Ratchet Sealing	1
90	295490	Carburetor Assy.	1
96	210719	Throttle, Carburetor	1
114	65787	Gasket, Needle Valve	1
116	65978	Packing, Needle Valve	1
117	23431	Nut, Needle Valve	1
118	23433	Valve, Needle	1
147	23432	Seat, Needle Valve	1
148	22235	Washer, Needle Valve	2
149	26336	Spring, Needle Valve	1
152	260575	Spring, Speed & Throttle Adj.	1
153	298031	Screw, Carburetor Lever	1
154	93349	Screw, Machine	1
163	27660	Gasket, Air Cleaner Mtg.	1
180	291834	Tank Assembly, Fuel	1
181	298425	Cap, Fuel Tank	1
187	296476	Pipe, Fuel	1
190	93341	Screw, Fuel Tank Mounting	1
191	27404	Gasket, Fuel Tank Mtg.	1
200	297310	Blade, Governor	1
201	260040	Link, Governor	1
209	260041	Spring, Governor	1
257	93263	Screw, Machine, Fil. Hd.	1

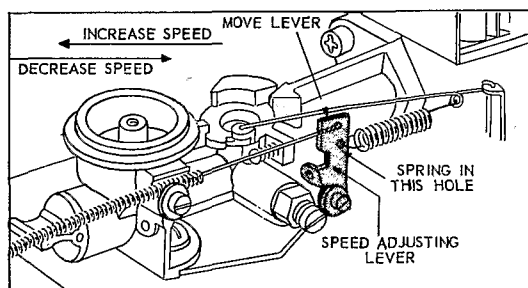
†Included in Gasket Set - Part No. 297275

ENGINE MODEL NO. 60102 RECOIL START (Cont'd.)

Ref. No.	Part No.	Description	No. Used
298	220859	Locknut, Muffler	1
299	294441	Muffler, Exhaust	1
304	294260	Housing, Blower	1
305	93158	Screw, Blow. Hsg. Mtg. Sem	1
306	220478	Shield, Cylinder	1
307	93042	Screw, Cyl. Shield Mtg.	1
308	220581	Cover, Cylinder Head	1
333	298502	Armature, Magneto	1
334	93381	Screw, Armature Mtg. Sem	1
337	298809	Plug, Spark	1
340	26018	Spring, Breaker Arm	1
341	93381	Screw, Break. Arm Mtg., Sem	1
342	65704	Plunger, Breaker Point	1
344	93042	Screw, Condenser Mtg., Sem	1
345	220366	Cover, Breaker Point & Cond.	1
346	93014	Screw, Dust Cover Mtg. Sem	1

Ref. No.	Part No.	Description	No. Used
347	221808	Switch, Stop	1
372	220477	Clamp, Condenser	1
375	294628	Break. Points & Cond. Set Note: 299061 Ignition Kit Includes: 294628 point set - 65704 plunger - 61760 key, flywheel	1
516	260374	Spring, Connector	1
534	93322	Screw, Air Cleaner	1
535	27987	Element, Air Cleaner	1
536	296767	Cleaner Assy., Air	1
540	221380	Lever, Speed Adjuster	1
541	22398	Washer, Speed Adj. to Carb.	1
608	294259	Starter Assy., Rewind	1
681	299059	Needle Valve Kit	1

SPEED CONTROL ADJUSTMENT



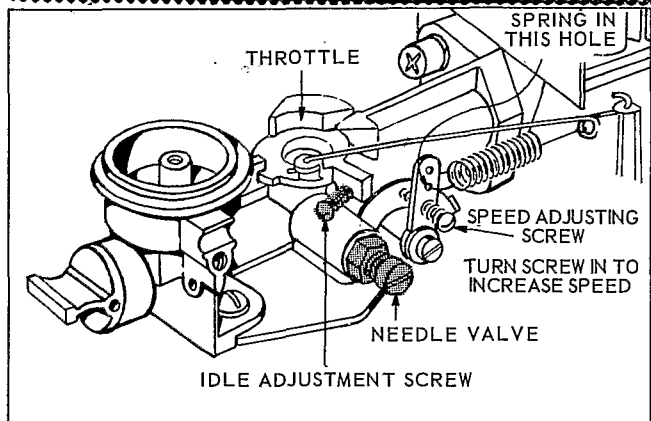
Controls on powered equipment should move speed lever in a direction that will elongate governor spring to increase speed.

TO ADJUST: Loosen clamp screw on carburetor or fuel tank bracket and move casing in or out to obtain proper speed. Maximum recommended speed is 3600 RPM.

CARBURETOR ADJUSTMENT

Minor carburetor adjustment may be required to compensate for differences in fuel, temperature, altitude and load.

NOTE: Adjust carburetor with fuel tank half full of regular grade gasoline.



INITIAL ADJUSTMENT:

Close needle valve (turn clockwise), then open 1½ turns (turn counterclockwise). This initial adjustment will permit the engine to be started and warmed up before making final adjustment.

FINAL ADJUSTMENT:

With engine running at normal operating speed (approximately 3000 RPM without load) close the needle valve (turn clockwise) until engine starts to lose speed (lean mixture.) Then slowly open needle valve (turn counterclockwise) past the point of smoothest operation, until engine just begins to run unevenly. This mixture should be rich enough for best performance under load.

Hold throttle in idling position. Turn idle speed adjusting screw until fast idle is obtained. (1750 RPM).

Test the engine under full load. If engine tends to stall or die out, it usually indicates that the mixture is slightly lean and may be necessary to open the needle valve slightly to provide a richer mixture. This richer mixture may cause a slight unevenness in idling.