

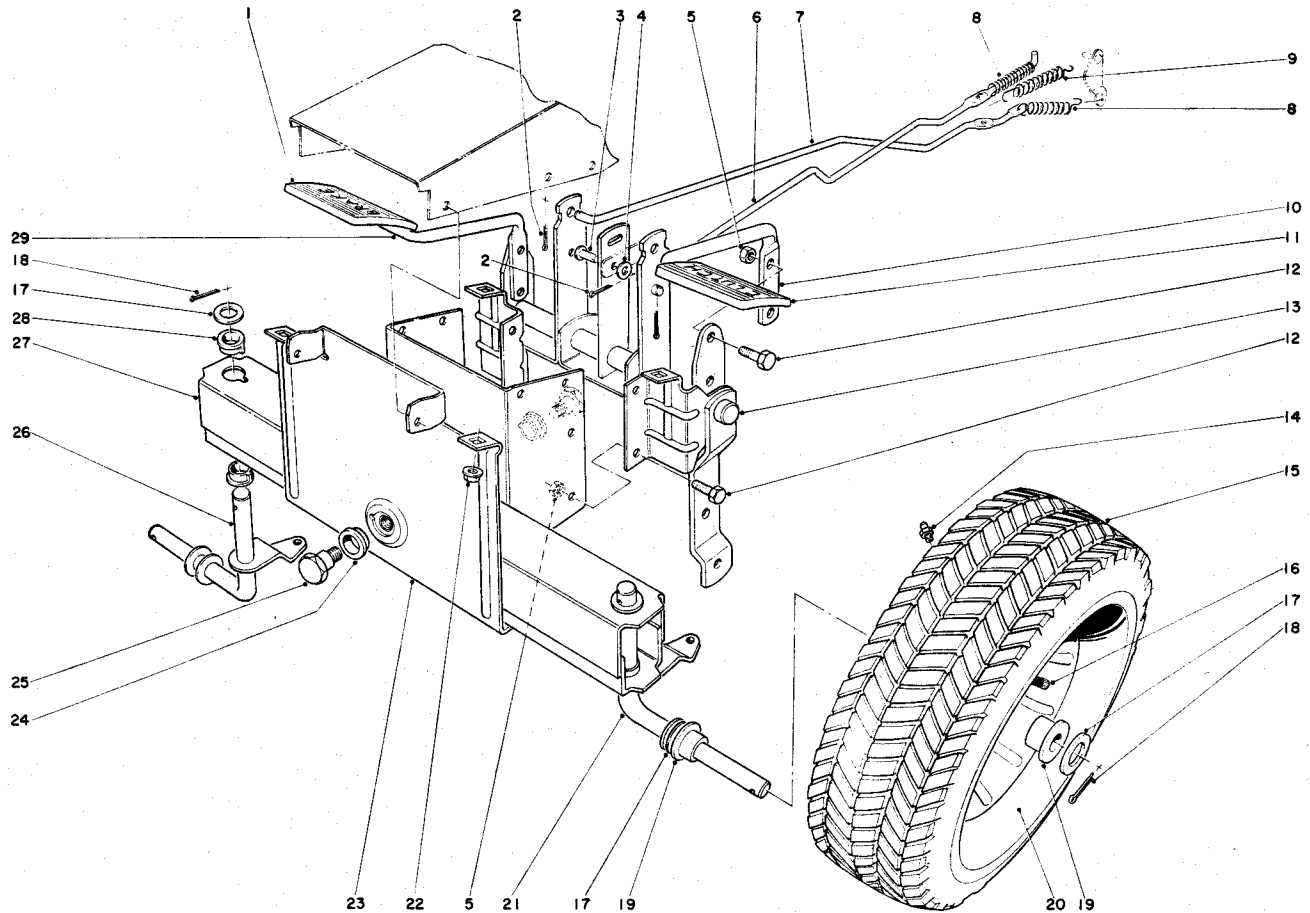
# TORO

We Take Care™

MODEL NO. 56100-100001 & UP (Recoil Start)  
 MODEL NO. 56150-100001 & UP (Electric Start)

## PARTS CATALOG

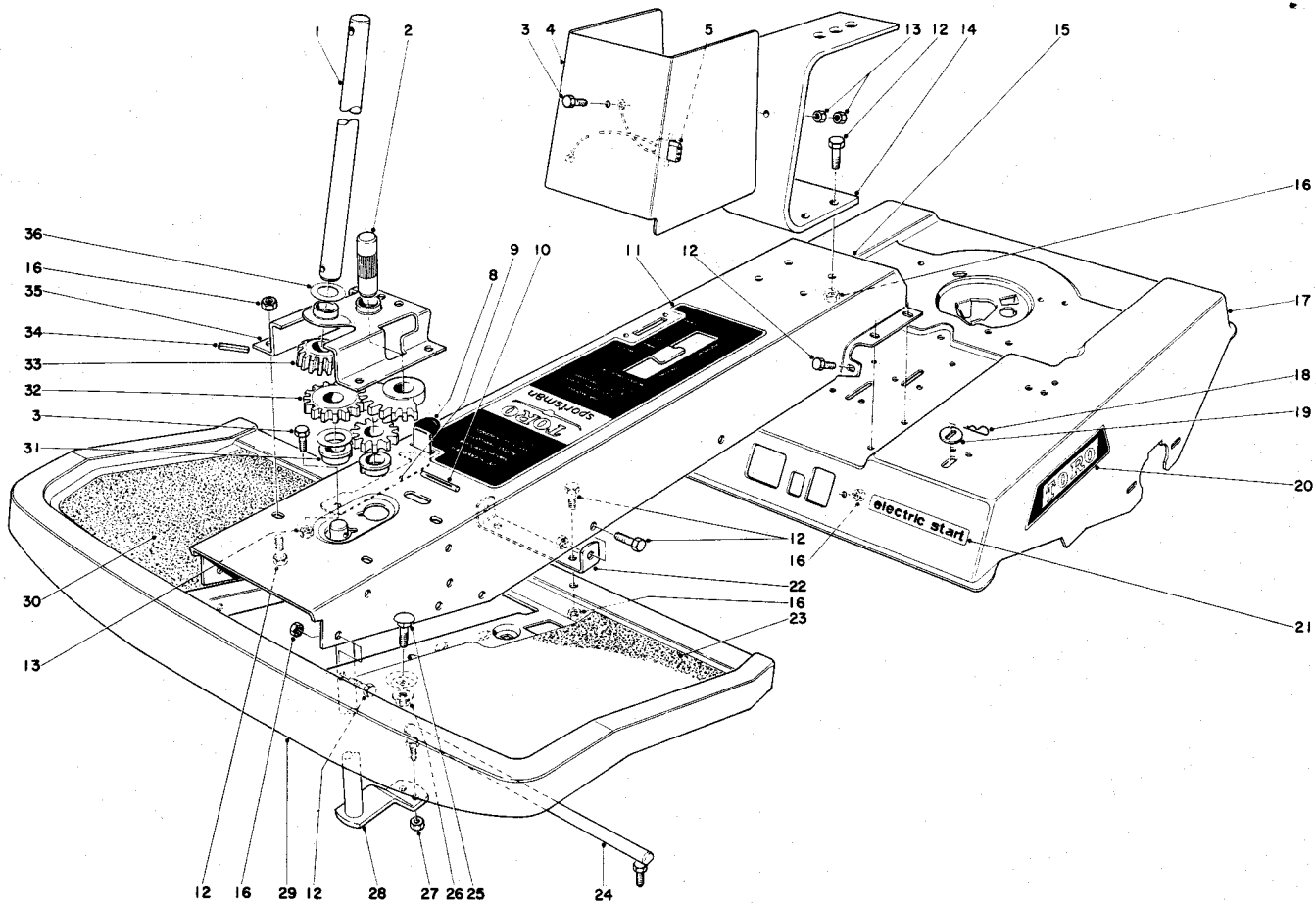
### 7 H.P. REAR ENGINE RIDER



### FRONT AXLE AND WHEEL ASSEMBLY

Ref. No.	Part No.	Description	No. Used
1	7-3900	Foot Pad, Brake	1
2	3272-6	Cotter Pin	3
3	283-30	Pin, Clevis	1
4	3256-23	Flat Washer	1
5	32146-5	Nut	8
6	11-2690	Clutch Rod	1
7	11-2680	Brake Rod	1
8	11-1700	Spring, Return	2
9	11-1680	Spring, Brake	1
10	11-2100	Clutch Pedal W. A.	1
11	7-3901	Foot Pad, Clutch	1
12	322-3	Capscrew	8
13	11-1820	Control Shaft W. A.	1
14	302-5	Zerk	2
15	231-55	Tire	2

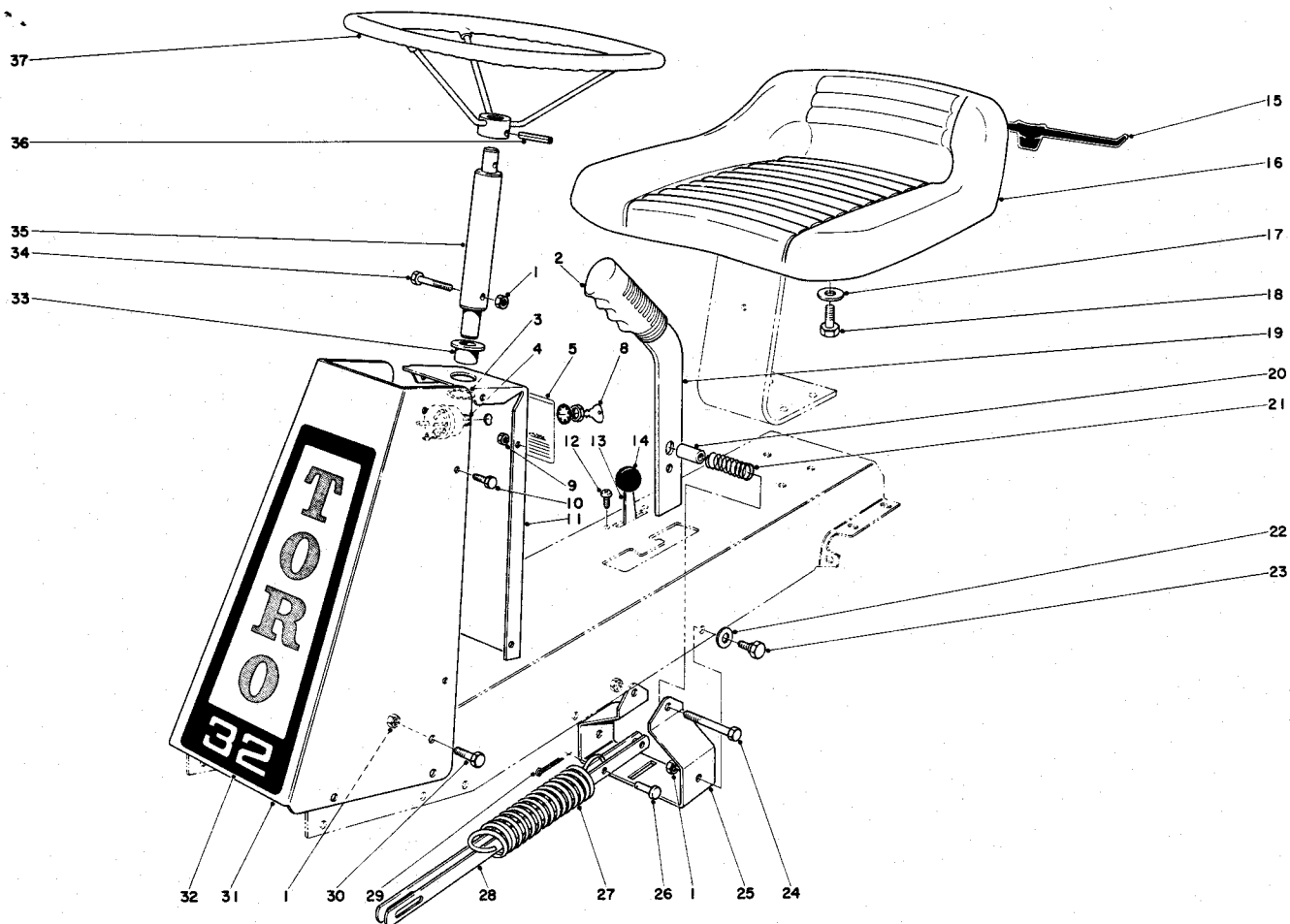
Ref. No.	Part No.	Description	No. Used
16	232-27	Valve Stem & Cap	2
17	3256-27	Flat Washer	6
18	3272-17	Cotter Pin	4
19	256-170	Bushing	4
20	217-80	Rim	2
21	11-1770	Spindle L. H.	1
22	32128-20	Flanged Nut	2
23	11-2550	Frame, Lower Front	1
24	11-1340	Bushing	2
25	11-1490	Bolt	2
26	11-2700	Spindle R. H.	1
27	11-2540	Front Axle	1
28	11-1510	Bushing	4
29	11-2110	Brake Pedal	1



## FRAME ASSEMBLY

Ref. No.	Part No.	Description	No. Used
1	11-2670	Steering Shaft, Upper	1
2	11-1860	Steering Idler Shaft Assembly	1
3	321-3	Capscrew	2
4	11-2940	Seat Spring Cover	1
5	11-2750	Plug Charger Model 56150	1
8	11-3560	Grip, Parking Brake	1
9	11-2210	Spring, Parking Brake	1
10	32121-85	Groove Pin	1
11	11-3480	Decal (Model 56100)	1
	11-5250	Decal (Model 56150)	1
12	322-3	Capscrew	24
13	32146-17	Locknut (Model 56100) (Model 56150)	2 3
14	11-2380	Seat Spring	1
15	11-2570	Center Frame	1
16	32146-5	Locknut	24
17	11-1810	Frame, Engine Mounting	1
18	3290-307	Pin, Quick Pull	2

Ref. No.	Part No.	Description	No. Used
19	11-1310	Washer	2
20	11-3440	Decal	2
21	11-3400	Decal (Model 56150)	1
22	11-1590	Support, Foot Rest	1
23	11-3390	Foot Tread L. H.	1
24	11-1870	Ball Joint	2
25	3230-18	Carriage Bolt	4
26	32128-20	Nut	4
27	32127-21	Nut	4
28	11-2020	Shaft, Lower Steering	1
29	11-2650	Foot Rest	1
30	11-3380	Foot Tread R. H.	1
31	11-1510	Bushing	2
32	11-1570	Gear	1
33	11-2060	Pinion	1
34	32121-4	Roll Pin	2
35	11-2290	Bracket, Steering Support	1
36	11-1330	Washer	1

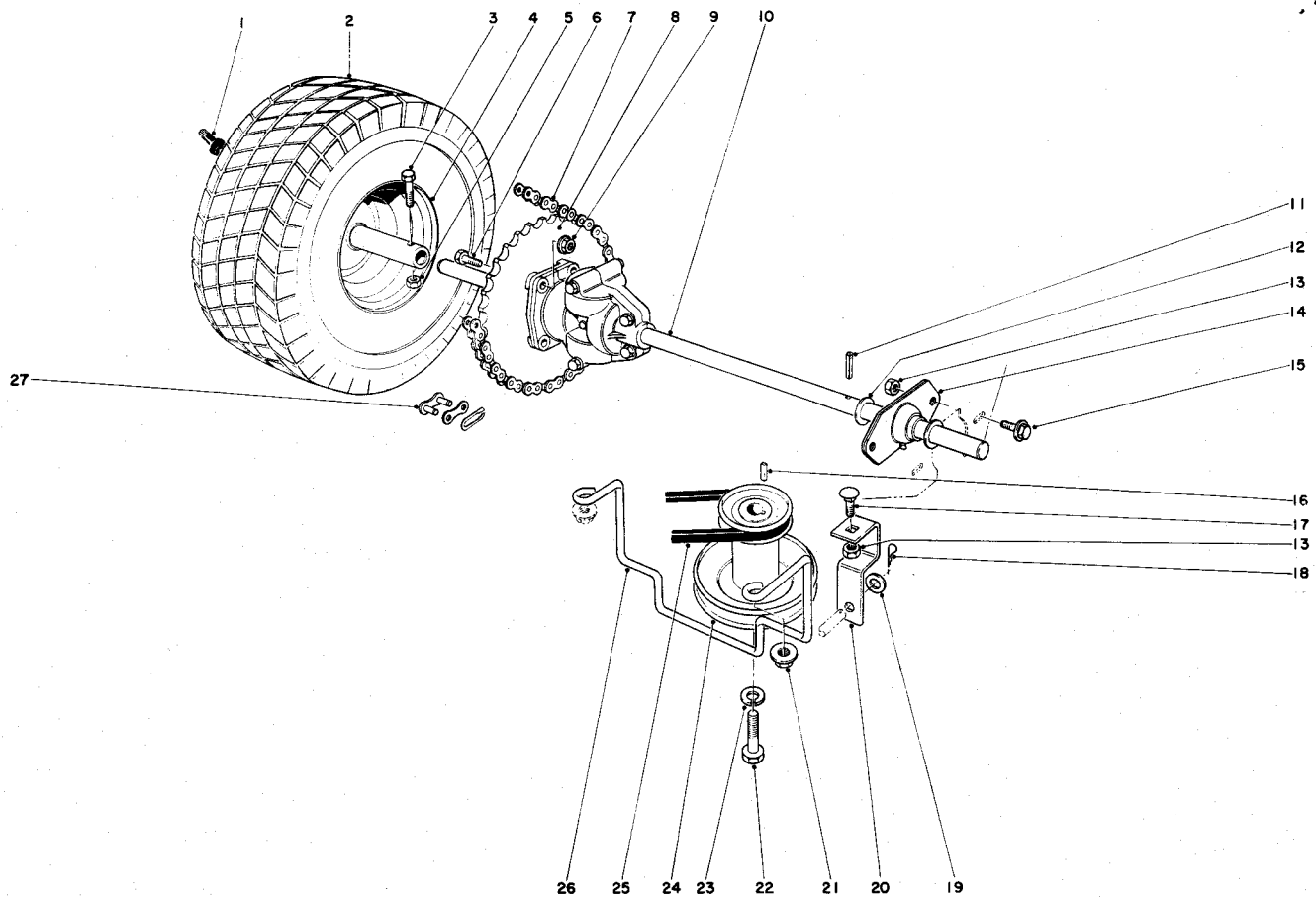


## STEERING AND SEAT ASSEMBLY

Ref. No.	Part No.	Description	No. Used
1	32146-5	Locknut	10
2	11-3580	Handle Grip	1
3	32151-37	Retaining Ring	1
4	11-3530	Switch (Model 56150)	1
5	11-3460	Decal Caution (Model 56150)	1
8	218-412	Key (Model 56150)	1
9	32146-17	Nut	6
10	321-3	Capscrew	6
11	11-1920	Panel (Model 56100)	1
		Incl. Ref. #33	
*	5-3299	Panel (Model 56150)	1
		Incl. Ref. #33	
12	32140-76	Screw, Truss Head	2
13	11-3570	Throttle Control	1
14	233-16	Knob	1
15	11-3470	Decal	1
16	11-3540	Seat	1
17	3256-26	Flat Washer	1
18	3235-7	Capscrew	1

Ref. No.	Part No.	Description	No. Used
19	11-2460	Handle, Clutch	1
20	11-1430	Spacer	1
21	11-1650	Spring	1
22	3256-24	Flat Washer	2
23	11-1660	Screw	2
24	322-11	Capscrew	1
25	11-2190	Pivot Bracket	1
26	283-30	Pin	2
27	11-1620	Spring	1
28	11-2220	Clutch Tie Bar	2
29	3272-6	Cotter Pin	2
30	322-3	Capscrew	6
31	11-2610	Cover, Steering Column	1
32	11-3500	Decal	1
33	11-1290	Bushing	1
34	322-9	Capscrew	1
35	11-1750	Steering Shaft	1
36	32121-15	Roll Pin	1
37	7-3722	Steering Wheel	1

\* Not Illustrated

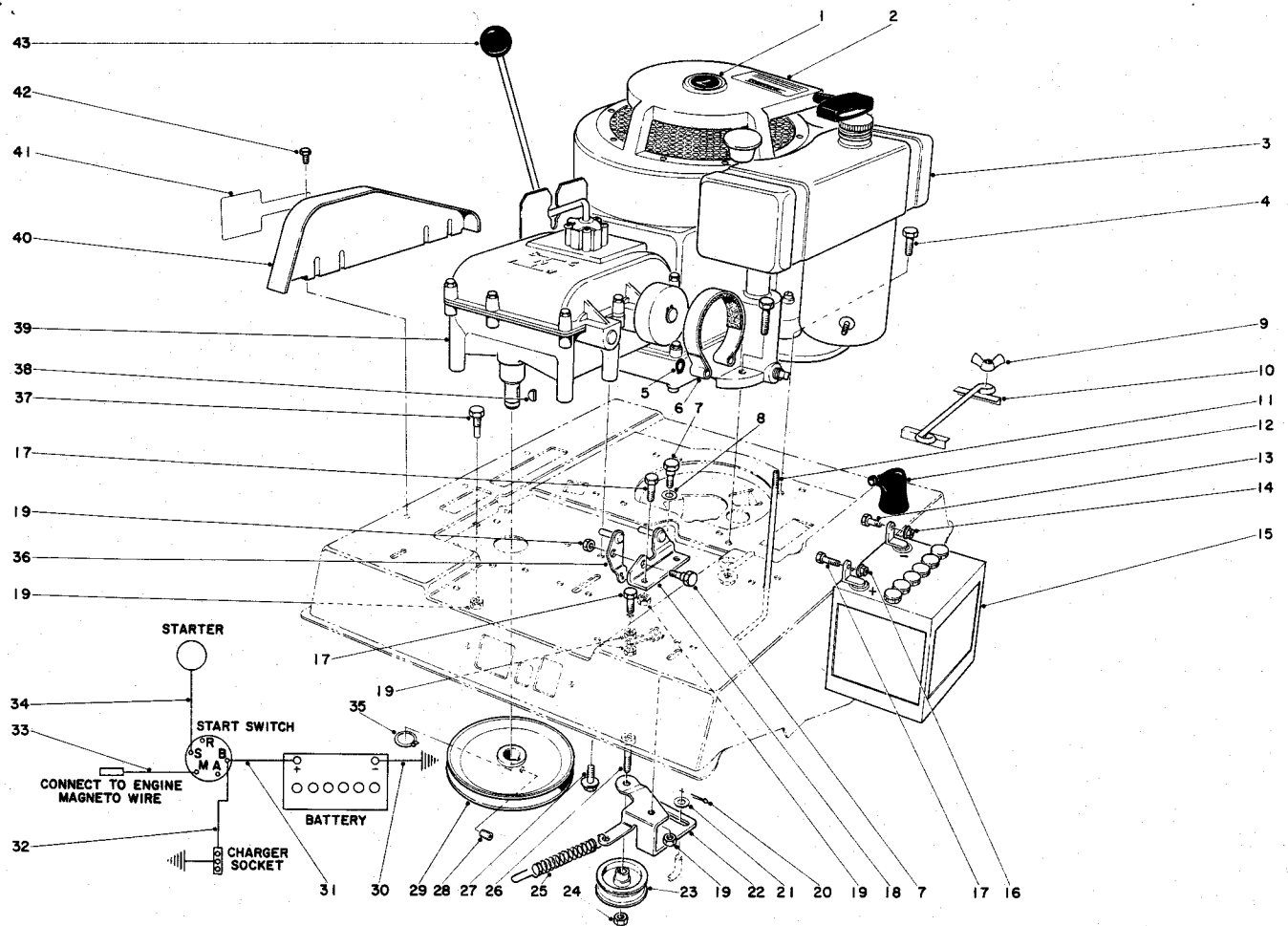


## REAR AXLE ASSEMBLY

Ref. No.	Part No.	Description	No. Used
1	232-27	Valve Stem & Cap	2
2	231-56	Rear Tire (Goodyear)	2
*	231-68	Rear Tire (Schenuit)	2
3	323-9	Capscrew	2
4	241-111	Rim	2
5	32153-2	Locknut	2
6	322-5	Capscrew	4
7	11-3220	Roller Chain	1
8	11-2390	Sprocket	1
9	32128-20	Locknut	4
10	11-1800	Differential	1
11	32121-6	Roll Pin	1
12	11-4930	Washer	4
13	32146-5	Locknut	5
14	11-1880	Rear Axle Bracket	2

Ref. No.	Part No.	Description	No. Used
15	3234-5	Flanged Screw	4
16	5-1336	Key	1
17	3230-18	Carriage Bolt	1
18	3272-6	Cotter Pin	1
19	3256-23	Washer	1
20	11-1500	Bracket	1
21	32128-13	Locknut	1
22	3212-8	Capscrew	1
23	3253-6	Lockwasher	2
24	11-2320	Sheave	1
25	11-1730	V-Belt	1
26	11-2330	Belt Retainer	1
27	2710-6	Connecting Link	1
*	2710-10	Half Link (Connecting)	1

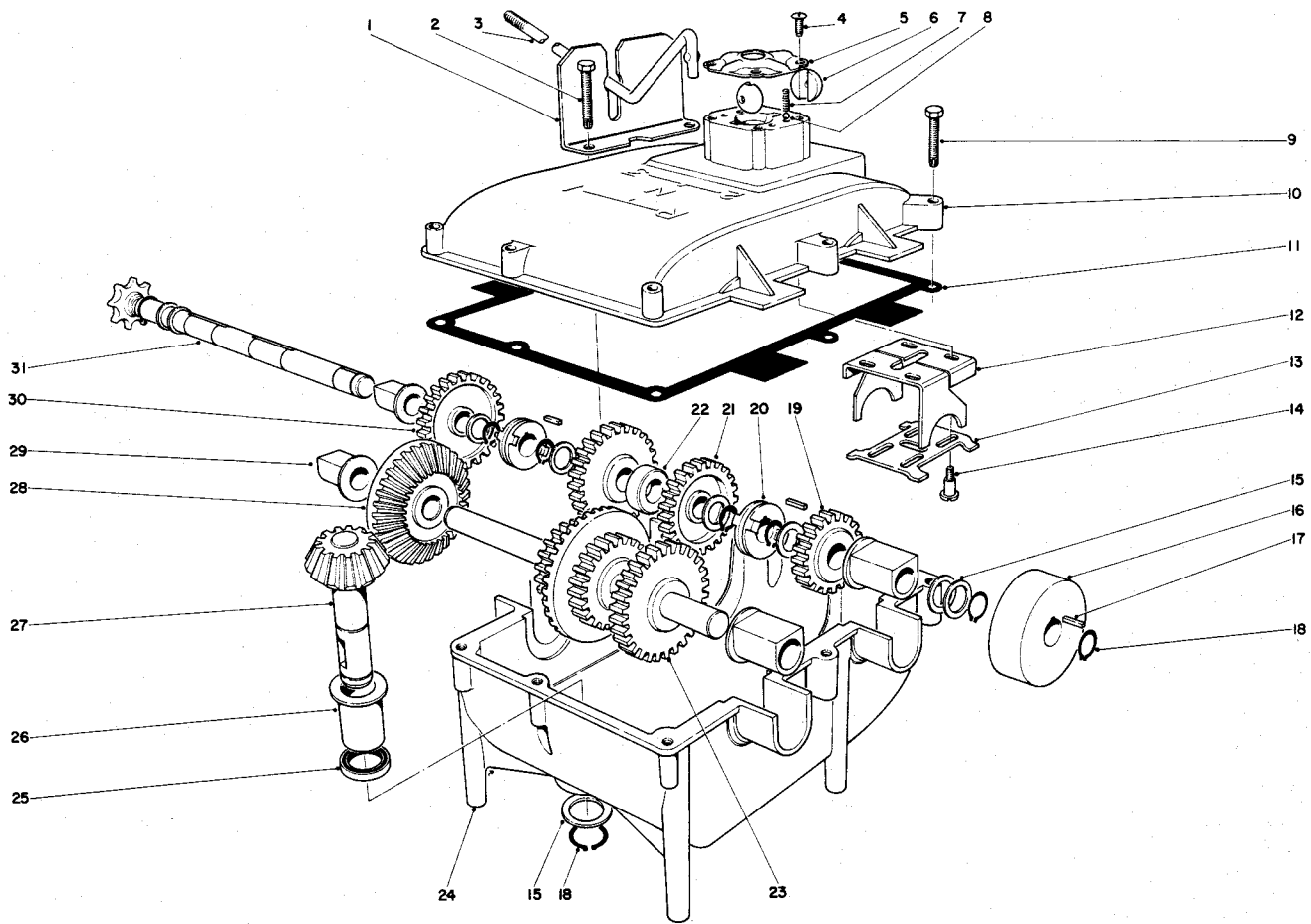
\* Not Illustrated



## ENGINE ASSEMBLY

Ref. No.	Part No.	Description	No. Used	Ref. No.	Part No.	Description	No. Used
1	11-3410	Decal (7)	1	23	11-3240	Idler Pulley	1
2	11-3450	Decal, Caution	1	24	32153-2	Nut	1
3	221-388	Engine (Model 56100)	1	25	11-1690	Clutch Spring	1
*	221-389	Engine (Model 56150)	1	26	3274-45	Capscrew	1
4	322-9	Capscrew	4	27	3234-5	Flange Screw	4
5	32151-3	Grip Ring	1	28	3246-2	Set Screw	1
6	11-1890	Brake Band	1	29	11-2270	Pulley	1
7	11-1660	Shoulder Bolt	2	30	11-3710	Ground Wire (56150)	1
8	11-5180	Washer	1	31	11-3690	Wire (Model 56150)	1
9	32103-20	Wing Nut (Model 56150)	2	32	11-2750	Wire (Model 56150)	1
10	7-5000	Battery Clamp (Model 56150)	1	33	11-3680	Wire (Model 56150)	1
11	11-2740	Bolt, Battery (Model 56150)	2	34	11-3700	Wire (Model 56150)	1
12	218-331	Boot, Terminal (Model 56150)	2	35	32120-64	Retaining Ring	1
13	321-3	Capscrew (Model 56150)	1	36	11-1900	Pivot Brake	1
14	32128-14	Nut (Model 56150)	1	37	11-3900	Screw	1
15	239-15	Battery (Model 56150)	1	38	3257-5	Key	1
16	32128-13	Nut (Model 56150)	1	*	7-6580	Battery Charger (Model 56150)	1
17	322-3	Capscrew	3	39	11-1830	Transmission	1
18	11-1910	Bracket	1	40	11-2280	Chain Guard	1
19	32146-5	Nut	7	41	11-3430	Decal, Shift Pattern	1
20	3272-6	Cotter Pin	1	42	32104-95	Screw, Self Tapping	2
21	3256-23	Washer	1	43	233-21	Knob, Shifter	1
22	11-2310	Idler Bracket	1				

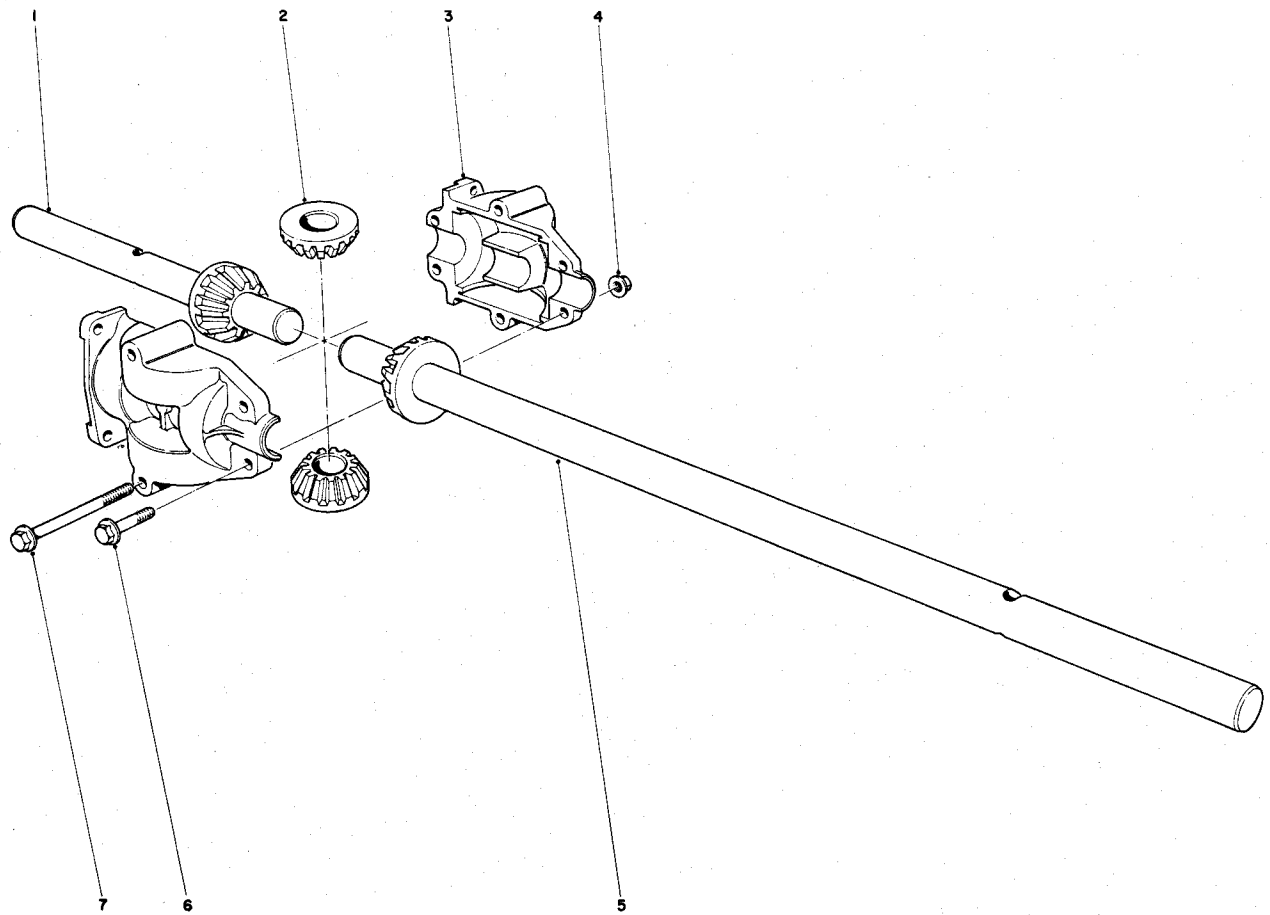
\* Not Illustrated



## TRANSMISSION ASSEMBLY

Ref. No.	Part No.	Description	No. Used
1	2119-503	Shift Bracket	1
2	32140-84	Screw	2
3	2119-519	Shift Rod	1
4	2119-528	Screw	4
5	2119-518	Shift Cap	1
6	233-21	Shift Rod, Ball Segment	2
7	2119-508	Spring	4
8	2119-507	Detent Ball	4
9	32140-83	Screw	6
10	2119-515	Upper Gear Cover Housing	1
11	2119-514	Gasket	1
12	2119-509	Shifter Yoke	2
13	2119-516	Backing Plate	1
14	2119-529	Shoulder Screw	4
15	2119-512	Flat Washer	9
16	2119-502	Brake Drum	1

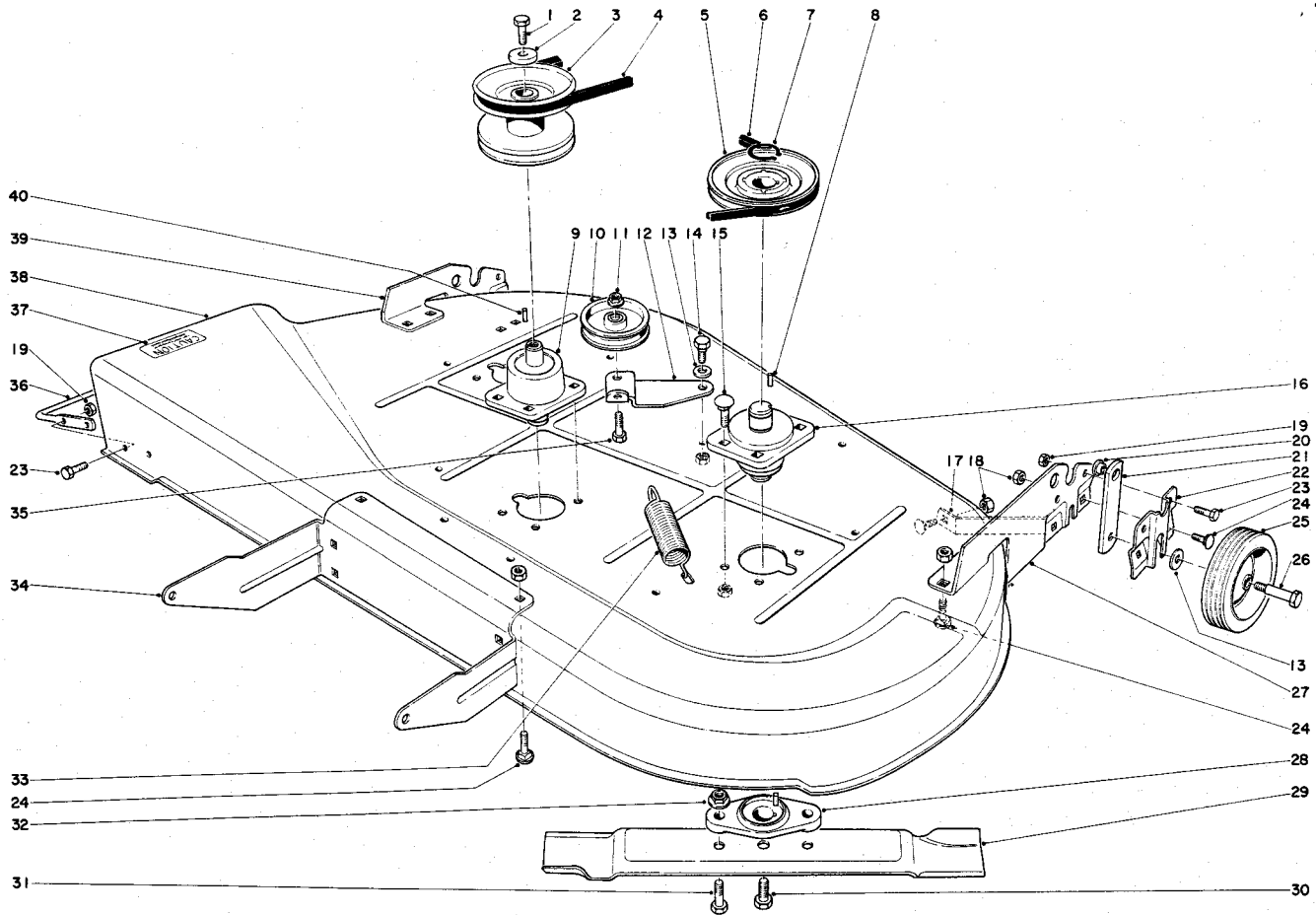
Ref. No.	Part No.	Description	No. Used
17	2119-526	Square Key	3
18	32120-64	Snap Ring	8
19	2119-520	Gear, 24 Teeth	1
20	2119-523	Driving Dog	2
21	2119-521	Gear, 30 Teeth	1
22	2119-522	Spacer	1
23	2119-511	Drive Shaft Assembly	1
24	2119-513	Lower Gear Housing	1
25	2119-505	Grease Seal	1
26	2119-506	Bushing	1
27	2119-504	Pinion Shaft Assembly	1
28	2119-510	Bevel Gear	1
29	2119-527	Bearing	4
30	2119-524	Gear 36 Tooth	2
31	2119-525	Sprocket Shaft	1



## DIFFERENTIAL ASSEMBLY

Ref. No.	Part No.	Description	No. Used
1	2119-534	Axle Shaft, Short	1
2	2119-535	Miter Gear	2
3	2119-532	Housing Half	2
4	32128-16	Locknut	6

Ref. No.	Part No.	Description	No. Used
5	2119-530	Axle Shaft, Long	1
6	2119-531	Bolt, Short	4
7	2119-533	Bolt, Long	2

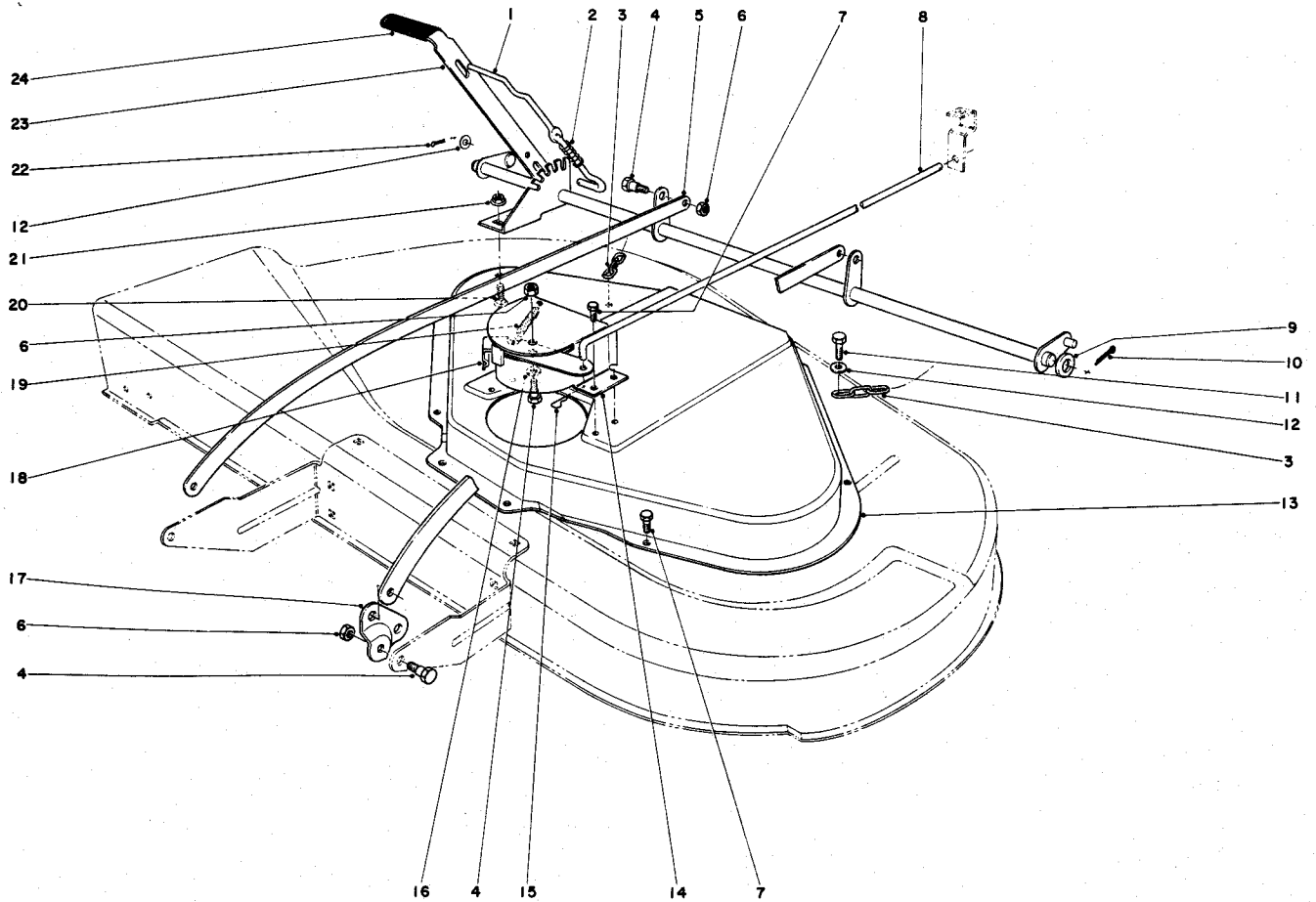


## 32" CUTTER HOUSING ASSEMBLY

Ref. No.	Part No.	Description	No. Used
1	3235-2	Lockscrew	1
2	11-1390	Washer	1
3	11-2150	Sheave	1
4	11-1740	V-Belt (Spindle Drive)	1
5	11-1990	Sheave	2
6	11-1720	V-Belt (Blade Drive)	1
7	32120-72	Retaining Ring	1
8	11-1450	Key	4
9	11-2010	Housing, Idler	1
10	11-1560	Flat Idler	1
11	32128-19	Locknut	1
12	11-1550	Idler Lever	1
13	3256-24	Washer	3
14	11-1660	Shoulder Bolt	1
15	3230-10	Carriage Bolt	12
16	11-2000	Housing, Blade Shaft	2
17	11-2500	Brace, Wheel Bracket	1
18	32146-5	Nut	16
19	32146-17	Nut	7
20	11-1410	Bushing	2

Ref. No.	Part No.	Description	No. Used
21	11-1530	Height Adjusting Bracket	2
22	11-2420	Retainer, Height Adj.	2
23	321-3	Capscrew	7
24	3230-15	Carriage Bolt	12
25	11-1580	Wheel	2
26	11-1360	Wheel Bolt	2
27	11-2510	Bracket, Wheel L. H.	1
28	11-2070	Blade Adapter	2
29	11-2250	Blade	2
30	11-5140	Capscrew	2
31	322-6	Capscrew	4
32	32128-13	Locknut	4
33	11-1630	Spring	1
34	11-2560	Housing Bracket	1
35	323-7	Capscrew	1
36	11-2400	Foot Guard	1
37	7-6630	Decal	1
38	11-2630	Housing	1
39	11-2410	Bracket, Wheel R. H.	1
40	10-8040	Key	1



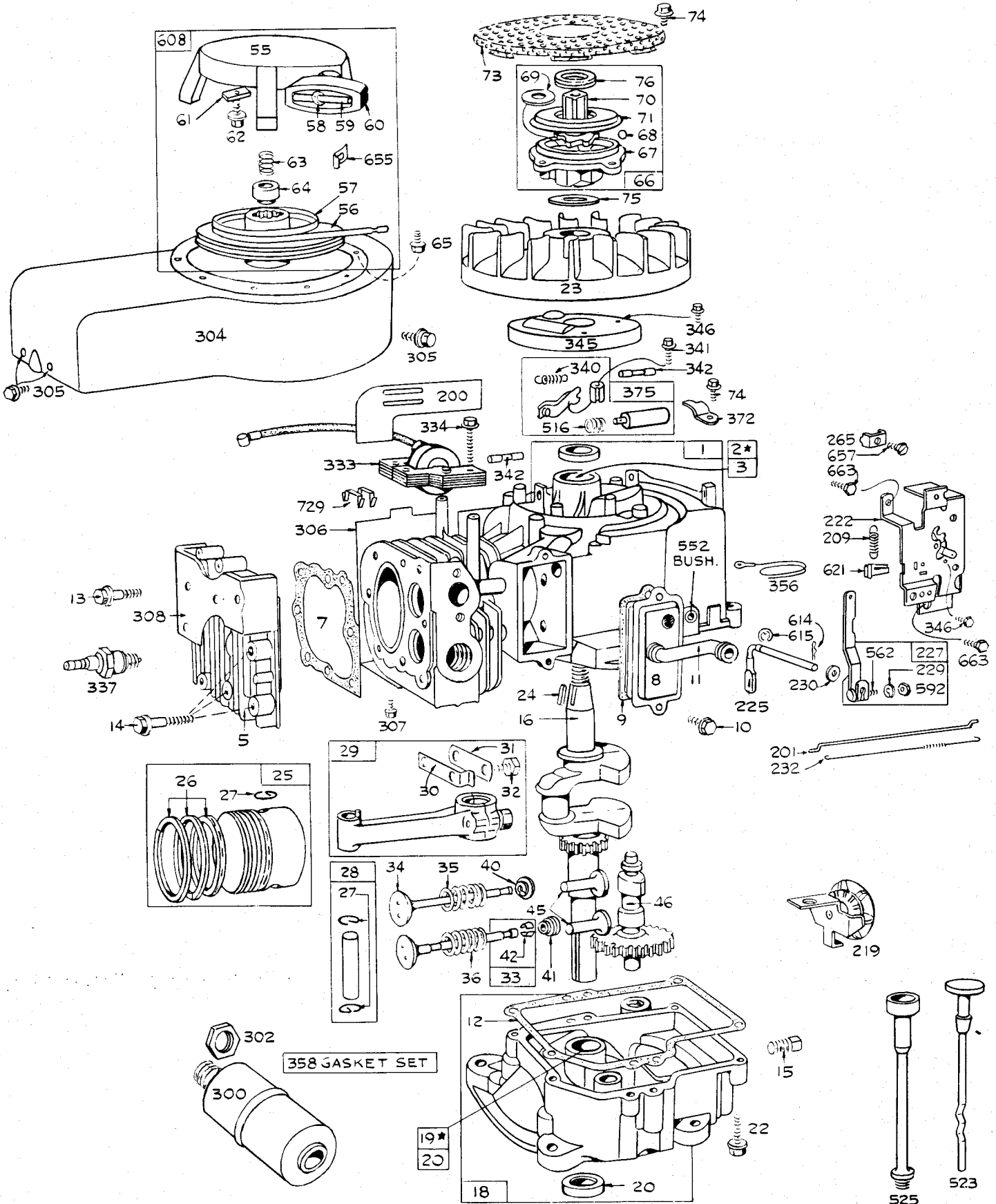


## CUTTER HOUSING LINKAGE

Ref. No.	Part No.	Description	No. Used
1	11-2050	Slide – Latch	1
2	11-1670	Spring	1
3	11-1400	Chain	2
4	11-1660	Shoulder Screw	7
5	11-2430	Lift Bar	2
6	32146-5	Nut	7
7	32104-17	Screw	10
8	11-3000	Brake Rod	1
9	11-6240	Washer	2
10	3272-17	Cotter Pin	2
11	32104-95	Screw	2
12	3256-22	Washer	3

Ref. No.	Part No.	Description	No. Used
13	11-2640	Housing Cover	1
14	11-2030	Belt Guard	1
15	3290-307	Quick Pull Pin	1
16	3256-24	Washer	1
17	11-1480	Pivot Bracket	2
18	11-1970	Brake Lever	1
19	11-1640	Spring	1
20	3230-15	Carriage Bolt	6
21	32128-13	Locknut	6
22	3272-5	Cotter Pin	1
23	11-2580	Height Adj. Shaft	1
24	11-3550	Handle Grip	1

# ENGINE BRIGGS & STRATTON MODEL NO. 170702-1163 RECOIL START



\*REQUIRES SPECIAL TOOLS FOR INSTALLING

# ENGINE BRIGGS & STRATTON MODEL NO. 170702-1163

## RECOIL START

Ref. No.	Part No.	Description	No. Used
1	390380	Cylinder Assembly	1
2	295962	Bushing—Cylinder Note: Requires special tools for installation	1
3	294606	Seal—Oil	1
5	211592	Head—Cylinder	1
7	◆270430	Gasket—Cylinder Head	1
8	299848	Breather Assembly	1
9	◆27803	Gasket—Valve Cover	1
10	93536	Screw—Sem	1
11	280005	Tube—Breather	1
12	◆27750	Gasket—Crankcase Cover—1/64" thick	1
12	◆27876	Gasket—Crankcase Cover—.005" Thick	1
12	◆27877	Gasket—Crankcase Cover—.009" thick	1
13	93210	Screw—Cylinder Head (2-9/32" long)	1
14	93211	Screw—Cylinder Head (2-21/32" long)	1
15	91084	Plug—Oil Drain	1
16	260609	Crankshaft	1
18	298616	Sump—Oil	1
19	295963	Bushing—Oil Sump Note: Requires special tools for installation	1
20	298423	Seal—Oil	1
22	93585	Screw—Sump Mtg. Sem	1
23	298260	Flywheel	1
24	61760	Key—Flywheel	1
25	299573	Piston Assy.—Standard	1
25	299566	Piston Assy.—.010" O. S.	1
25	299567	Piston Assy.—.020" O. S.	1
25	299568	Piston Assy.—.030" O. S.	1
<b>PISTON RING SETS:</b>			
Note: For Chrome Piston Ring Set—Standard Size—order part No. 299743			
26	299569	Ring Set—Piston—Std. Consists of: 211637—Ring, Piston, Comp., Top Std. 211636—Ring, Piston, Comp., Center, Std. 211635—Ring, Piston, Oil, Std.	1
26	299570	Ring Set—Piston—.010" O. S. Consists of: 211649—Ring, Piston, Comp., Top, .010" O. S. 211650—Ring, Piston, Comp., Center, .010" O. S. 211651—Ring, Piston, Oil, .010" O. S.	1
26	299571	Ring Set—Piston—.020" O. S. Consists of: 211653—Ring, Piston, Comp., Top, .020" O. S. 211654—Ring, Piston, Comp., Center, .020" O. S. 211655—Ring, Piston, Oil, .020" O. S.	1

Ref. No.	Part No.	Description	No. Used
26	299572	Ring Set—Piston—.030" O. S. Consists of: 211657—Ring, Piston, Comp., Top, .030" O. S. 211658—Ring, Piston, Comp., Center, .030" O. S. 211659—Ring, Piston, Oil, .030" O. S.	1
27	68546	Lock—Piston Pin	1
28	295840	Pin Assy.—Piston—Std.	1
28	295841	Pin Assy.—Piston—.005" O. S.	1
29	295839	Rod Assy.—Connecting	1
30	221725	Dipper—Conn. Rod	1
31	220811	Lock—Conn. Rod Screw	1
32	92659	Screw—Conn. Rod	1
33	390419	Valve—Exhaust	1
34	261055	Valve—Intake	1
35	65906	Spring—Intake Valve	1
36	26828	Spring—Exhaust Valve	1
40	221596	Retainer—Intake Valve	1
41	292260	Rotocoil—Exhaust Valve	1
42	93630	Retainer—Exhaust Valve Rotocoil (2)	1
45	260933	Tappet—Valve	1
46	210728	Gear—Cam	1
55	295272	Housing—Rewind Starter	1
56	295871	Pulley—Rewind Starter	1
57	294303	Spring—Rewind Starter	1
58	66564	Rope—Rewind Starter	1
59	230228	Pin—Starter Grip	1
60	66728	Grip—Starter Rope	1
61	68848	Bumper—Starter Pulley	1
62	93524	Screw—Pulley Bumper Mounting Sem	1
63	260414	Spring—Ratchet	1
64	230543	Adapter—Ratchet Spring	1
65	93106	Screw—Rewind Starter Housing Mounting	1
66	298798	Clutch Assembly— Rewind Starter	1
67	211383	Housing—Rewind Starter Clutch	1
68	63770	Ball—Clutch	1
69	66718	Washer—Starter Clutch, Thrust	1
70	298799	Ratchet—Rewind Starter Clutch	1
71	221653	Washer—Retainer	1
73	221796	Screen—Rewind Starter	1
74	93042	Screw—Sem	1
75	220685	Washer—Spring	1
76	68238	Washer—Ratchet Sealing	1
200	221760	Guide—Air	1
201	260971	Link—Governor	1
209	261129	Spring—Governor	1
219	298614	Oil Slinger, Gov. Gear and Bracket Assembly	1
222	390662	Plate—Gov. Control	1
225	230759	Shaft—Gov. Lever	1
227	298303	Lever Assy.—Governor	1
229	220680	Washer—Gov. Lever	1
230	221559	Washer—Gov. Lever	1
232	260584	Spring—Governor Link	1

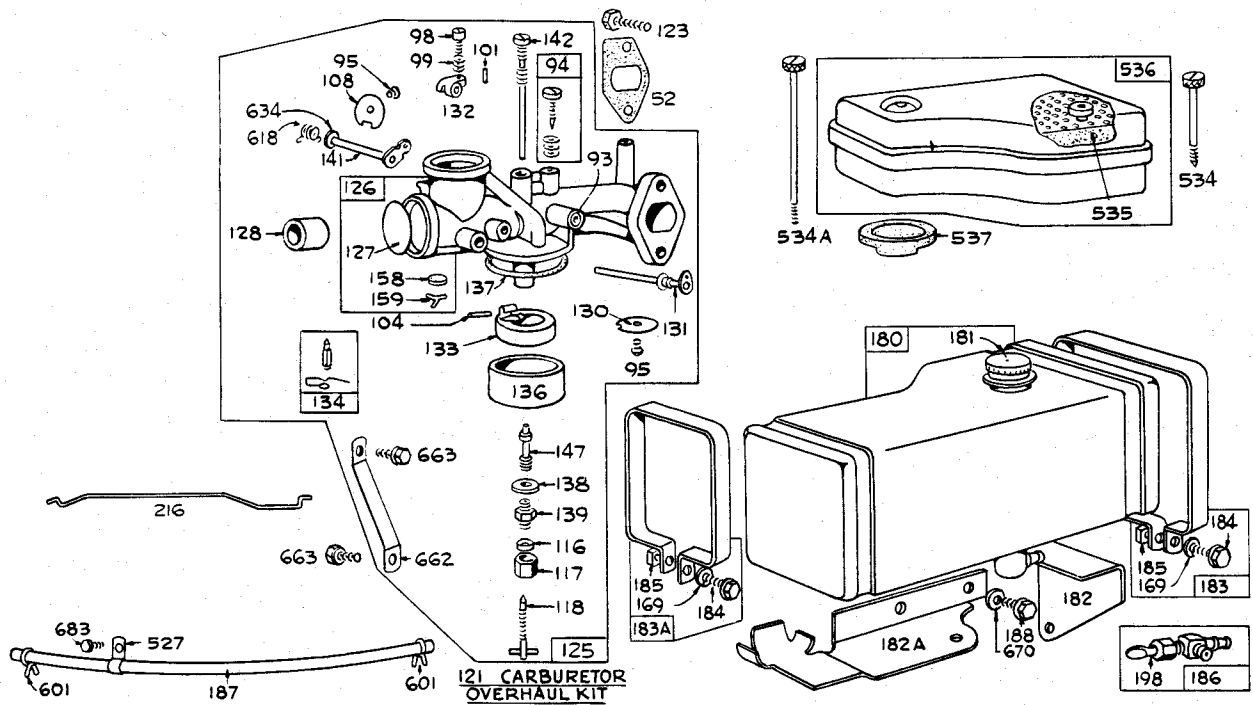
◆Included in Gasket Set — Part No. 299577

# ENGINE BRIGGS & STRATTON MODEL NO. 170702-1163

## RECOIL START

Ref. No.	Part No.	Description	No. Used
265	221535	Clamp—Casing	1
300	294599	Muffler—Exhaust	1
302	91242	Locknut—Muffler	1
304	299853	Housing—Blower	1
305	93158	Screw—Blower Housing Mounting Sem	1
306	221898	Shield—Cylinder	1
307	93163	Screw—Cylinder Shield Mounting Sem	1
308	221901	Cover—Cylinder Head	1
333	298968	Armature Assembly	1
334	93381	Screw—Armature Mounting Sem	1
337	298809	Plug—Spark	1
340	26018	Spring—Breaker Arm	1
341	93381	Screw—Breaker Arm Mtg.	1
342	65704	Plunger—Breaker Point	1
345	222117	Cover—Breaker Point	1
346	93014	Screw—Hex. Hd.	1
356	299500	Wire—Ground	1
358	299577	Gasket Set	1
372	220477	Clamp—Condenser	1

Ref. No.	Part No.	Description	No. Used
375	294628	Breaker Points and Condenser Set	1
		Note: 299061 Ignition Kit Includes: 294628 Point Set 65704 Plunger 61760 Key—Flywheel	1
516	260374	Spring—Connector	1
523	390212	Cap and Dipstick— Oil Filler	1
525	390217	Tube—Oil Filler	1
552	230927	Bushing—Governor Shaft	1
562	92613	Bolt—Governor Lever	1
592	90356	Nut—Hex., 10-24	1
608	295001	Starter Assy.—Rewind	1
614	93306	Cotter—Hair Pin	1
615	93307	Retainer—E-Ring	1
621	297472	Switch—Stop	1
655	221014	Anchor—Spring	1
657	93496	Screw—Sem	1
663	93572	Screw—Bracket Mtg.	1
729	221907	Clip—Wire	1



## CARBURETOR AND FUEL TANK ASSEMBLY RECOIL AND ELECTRIC START

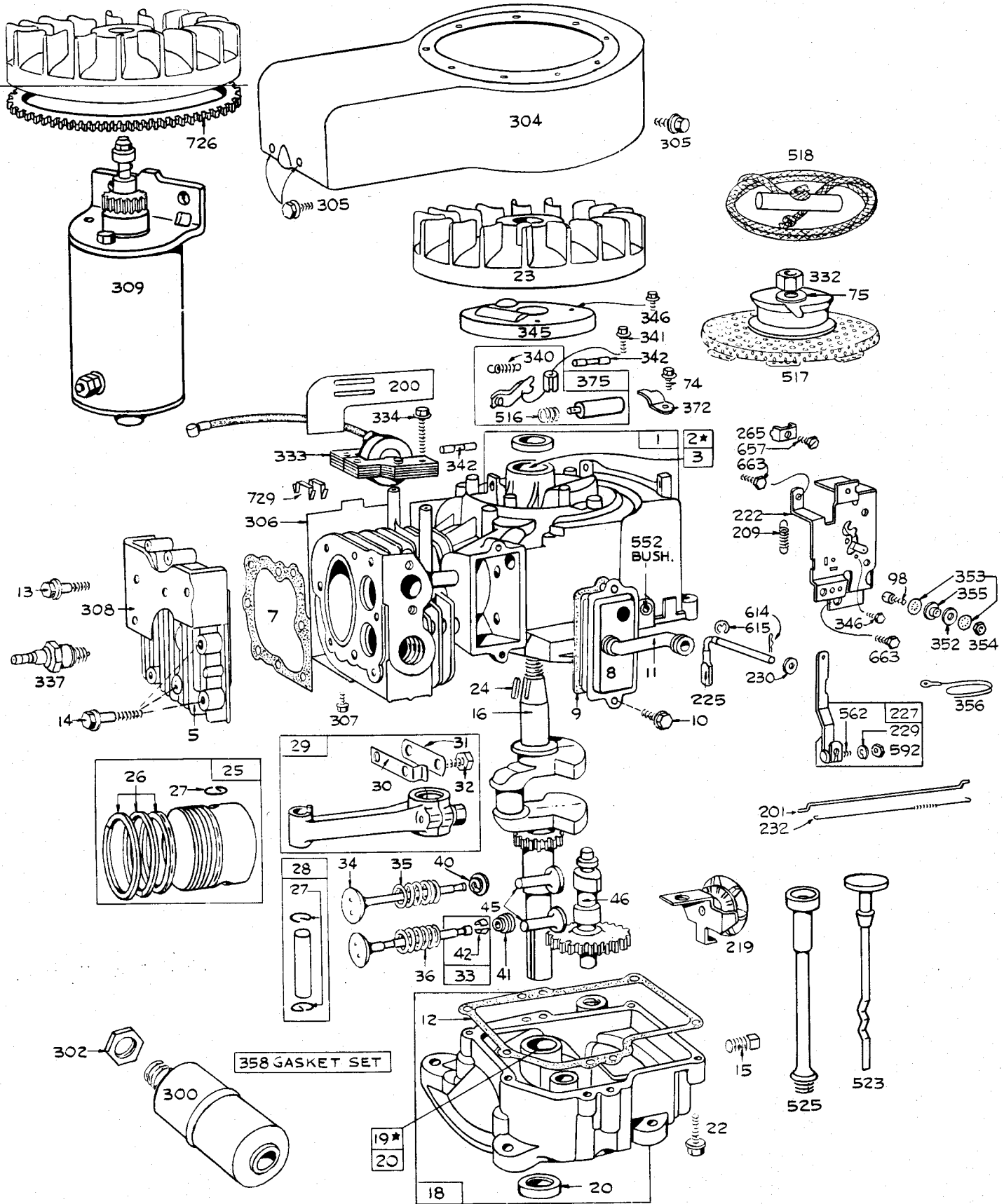
Ref. No.	Part No.	Description	No. Used
52	◆270538	Gasket—Carburetor Mounting	1
93	23108	Bushing—Throttle Shaft	1
94	‡292681	Valve Assembly—Carburetor Idle	1
95	93038	Screw—Throttle and Choke Valve Mtg. Sem	1
98	91920	Screw—Machine, Fill. Hd. 8-32 x 5/8"	1
99	26157	Spring—Throttle Adjustment	1
101	93043	Pin—Throttle Stop	1
104	‡230896	Pin—Float Hinge	1
108	222010	Valve—Choke	1
116	‡68677	Packing—Needle Valve	1
117	‡23118	Nut—Needle Valve Packing	1
118	‡299762	Valve—Needle	1
121	299852	Carburetor Overhaul Kit	1
123	93357	Screw—Carburetor Mounting	1
125	390811	Carburetor Assembly	1
126	390812	Body Assy.—Lower Carb.	1
127	221997	Plug—Welch	1
128	211682	Venturi—Carburetor	1
130	221986	Valve—Throttle	1
131	299650	Shaft and Lever—Throttle	1
132	211712	Stop—Throttle	1
133	299707	Float—Carburetor	1
134	‡299096	Valve—Fuel Inlet	1
136	221995	Bowl—Float	1
137	‡270511	Gasket—Float Bowl	1
138	‡222014	Washer—Float Bowl	1
139	‡230935	Retainer—Jet Needle	1
141	390684	Shaft and Lever—	1
142	‡299740	Nozzle—Carburetor	1

◆ Included in Gasket Set — Part No. 299577

Ref. No.	Part No.	Description	No. Used
147	‡230932	Screw—Nozzle	1
158	27590	Filter—Carburetor Drain	1
159	220521	Retainer—Carburetor Drain Filter	1
169	90832	Washer—Lock—1/4" x 3/32" x 5/64"	1
180	390225	Tank Assy.—Fuel	1
181	293270	Cap—Fuel Tank	1
182	222098	Bracket—Fuel Tank, R. H.	1
182A	222112	Bracket—Fuel Tank, L. H.	1
183	390406	Strap Assy.—Fuel Tank, R. H.	1
183A	390405	Strap Assy.—Fuel Tank, L. H.	1
184	93614	Screw—Fuel Tank Strap	1
185	90970	Nut—Square, 1/4-20	1
186	390303	Connector and Shut—Off Valve	1
187	296004	Pipe—Fuel	1
188	93535	Screw—Sem	1
198	293934	Valve—Fuel Shut-Off	1
216	261117	Link—Choke	1
527	221428	Clamp	1
534	93323	Screw—Air Cleaner	1
534A	93622	Screw—Air Cleaner	1
535	270528	Element—Air Cleaner	1
536	390379	Cleaner Assy.—Air	1
537	270539	Gasket—Air Cleaner	1
601	93053	Clamp—Fuel Pipe	1
618	261116	Spring—Choke Return	1
634	270382	Washer—Choke Shaft	1
662	222027	Bracket—Carburetor	1
663	93572	Screw—Bracket Mtg.	1
670	93682	Spacer—Fuel Tank	1
683	93351	Screw	1

‡ Included in Carburetor Overhaul Kit — Part No. 299852

# ENGINE BRIGGS & STRATTON MODEL NO. 170705-1164 ELECTRIC START



\*REQUIRES SPECIAL TOOLS FOR INSTALLING

# ENGINE BRIGGS & STRATTON MODEL NO. 170705-1164 ELECTRIC START

Ref. No.	Part No.	Description	No. Used	Ref. No.	Part No.	Description	No. Used
1	390380	Cylinder Assembly	1				
2	295962	Bushing—Cylinder Note: Requires special tools for installation.		26	299571	211651, Ring, Piston, Oil, .010" O. S. Ring Set—Piston—.020" O. S. Consists of:	1
3	294606	Seal—Oil	1			211653, Ring, Piston, Comp., Top, .020" O. S.	
5	211592	Head—Cylinder	1			211654, Ring, Piston, Comp., Center, .020" O. S.	
7	◆270430	Gasket—Cylinder Head	1			211655, Ring, Piston, Oil, .020" O. S.	
8	299848	Breather Assembly	1	26	299572	Ring Set—Piston—.030" O. S. Consists of:	1
9	◆27803	Gasket—Valve Center	1			211657, Ring, Piston, Comp., Top, .030" O. S.	
10	93536	Screw—Sem	1			211658, Ring, Piston, Comp., Center, .030" O. S.	
11	28005	Tube—Breather	1			211659, Ring, Piston, Oil, .030" O. S.	
12	◆27750	Gasket—Crankcase Cover—1/64" thick	1	27	68546	Lock—Piston Pin	1
12	◆27876	Gasket—Crankcase Cover—.005" thick	1	28	295840	Pin Assy.—Piston—Std.	1
12	◆27877	Gasket—Crankcase Cover—.009" thick	1	28	295841	Pin Assy.—Piston—.005 O. S.	1
13	93210	Screw—Cylinder Head (2-9/32" long)	1	29	295839	Rod Assy.—Connecting	1
14	93211	Screw—Cylinder Head (2-21/32" long)	1	30	221725	Dipper—Conn. Rod	1
15	91084	Plug—Oil Drain	1	31	220811	Lock—Conn. Rod Screw	1
16	260609	Crankshaft	1	32	92659	Screw—Conn. Rod	1
18	298616	Sump—Oil	1	33	390419	Valve—Exhaust	1
19	295963	Bushing—Oil Sump Note: Requires special tools for installation.	1	34	261055	Valve—Intake	1
20	298423	Seal—Oil	1	35	65906	Spring—Intake Valve	1
22	93585	Screw—Sump Mtg. Sem	1	36	26828	Spring—Exhaust Valve	1
23	299375	Flywheel	1	40	221596	Retainer—Intake Valve	1
24	61760	Key—Flywheel	1	41	292260	Rotocoil—Exhaust Valve	1
25	299573	Piston Assy.—Standard	1	42	93630	Retainer—Exhaust Valve Rotocoil (2)	1
25	299566	Piston Assy.—.010" O. S.	1	45	260933	Tappet—Valve	1
25	299567	Piston Assy.—.020" O. S.	1	46	210728	Gear—Cam	1
25	299568	Piston Assy.—.030" O. S.	1	52	◆270538	Gasket—Carburetor Mounting	1
		<b>PISTON RING SETS:</b> Note: For Chrome Piston Ring Set — Standard Size — order part No. 299743.		74	93042	Screw—Sem	1
26	299569	Ring Set—Piston—Std. Consists of:	1	75	220865	Washer—Spring	1
		211637, Ring, Piston, Comp., Top Std.		98	91920	Screw—Machine, Fill. Hd. 8-32 x 5/8"	1
		211636, Ring, Piston, Comp., Center, Std.		200	221760	Guide—Air	1
		211635, Ring, Piston, Oil, Std.		201	260971	Link—Governor	1
26	299570	Ring Set—Piston—.010" O. S. Consists of:	1	209	261129	Spring—Governor	1
		211649, Ring, Piston, Comp., Top, .010" O.S.		219	298614	Oil Slinger, Gov. Gear and Bracket Assembly	1
		211650, Ring, Piston, Comp., Center, .010" O. S.		222	390662	Plate—Gov. Control	1
				225	230759	Shaft—Gov. Lever	1
				227	298303	Lever Assy.—Governor	1
				229	220680	Washer—Gov. Lever	1
				230	221559	Washer—Gov. Lever	1
				232	260584	Spring—Governor Link	1
				265	221535	Clamp—Casing	1

◆ Included in Gasket Set — Part No. 299577

# ENGINE BRIGGS & STRATTON MODEL NO. 170705-1164 ELECTRIC START

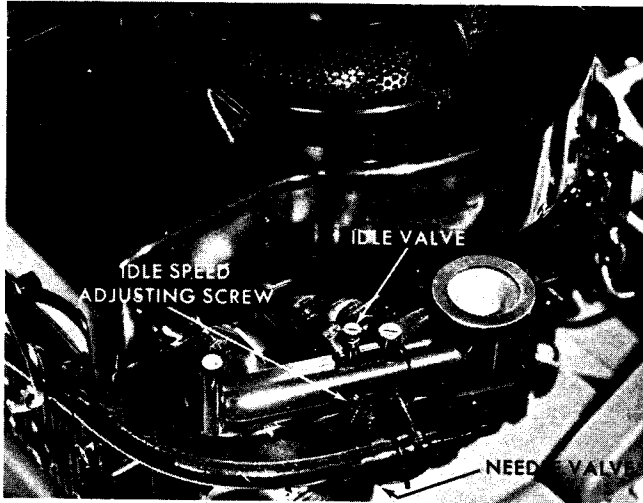
Ref. No.	Part No.	Description	No. Used
300	294599	Muffler—Exhaust	1
302	91242	Locknut—Muffler	1
304	299392	Housing—Blower	1
305	93158	Screw—Blower Housing Mounting Sem	1
306	221898	Shield—Cylinder	1
307	93163	Screw—Cylinder Shield Mounting Sem	1
308	221901	Cover—Cylinder Head	1
309	390307	Motor—Starting	1
		(*) American Bosch-Arma No. SMH12-A11 (on Commutator End Cap)	
		(**) Made in Japan for B & S No. MM0.5ML (on Main Housing)	
		Replacement Parts for Starting Motor No. 390307 (see list below).	
		Drive Assembly (complete) B & S No. 390433 (*) B & S No. 299963 (**)	
		Drive End Cap Assembly w/Bearing and Bracket. B & S No. 390444 (*) B & S No. 390454 (**)	
		Armature Assembly Including Washers. B & S No. 390446 (*) B & S No. 390456 (**)	
		Housing Assembly including Field Coils. B & S No. 390447 (*) B & S No. 390452 (**)	
		Commutator End Cap Assembly including Bush- ing, Brushes and Springs. B & S No. 390448 (*) B & S No. 390455 (**)	
		Thru Bolt Assembly includes Nuts and Lockwashers. B & S No. 390450 (*)	

Ref. No.	Part No.	Description	No. Used
		B & S No. 299962 (**)	
		Brush Kit	
		B & S No. 390449 (*)	
332	92284	Nut	1
333	298968	Armature Assembly	1
334	93381	Screw—Armature Mounting Sem	1
337	298809	Plug—Spark	1
340	26018	Spring—Breaker Arm	1
341	93381	Screw—Breaker Arm Mtg.	1
342	65704	Plunger—Breaker Point	1
345	222117	Cover—Breaker Point	1
346	93014	Screw—Hex. Hd.	1
352	66068	Washer—Insulating	1
353	92791	Washer—Lock—Shakeproof	1
354	90576	Nut—Hex.—8-32	1
355	66554	Collar—Insulating -	1
356	299500	Wire—Ground	1
358	299577	Gasket Set	1
372	220477	Clamp—Condenser	1
375	294628	Breaker Points and Condenser Set	1
		Note: 299061 Ignition Kit Includes: 294628 Point Set 65704 Plunger 61760 Key—Flywheel	
516	260374	Spring—Connector	1
517	295423	Pulley—Rope Starter (with screen)	1
518	69932	Rope—Starter	1
523	390212	Cap and Dipstick— Oil Filler	1
525	390217	Tube—Oil Filler	1
552	230927	Bushing—Governor Shaft	1
562	92613	Bolt—Governor Lever	1
592	90356	Nut—Hex., 10-24	1
614	93306	Cotter—Hair Pin	1
615	93307	Retainer—E-Ring	1
657	93496	Screw—Sem	1
663	93572	Screw—Bracket Mtg.	1
726	299543	Gear, Ring (Includes mounting parts)	1
729	221907	Clip—Wire	1



# GENERAL MAINTENANCE

## CARBURETOR ADJUSTMENT



Do not make unnecessary adjustments. Factory settings are correct for most applications. If adjustments are needed, proceed as follows:

**CAUTION:** Do not force or tighten needle. Permanent damage may result.

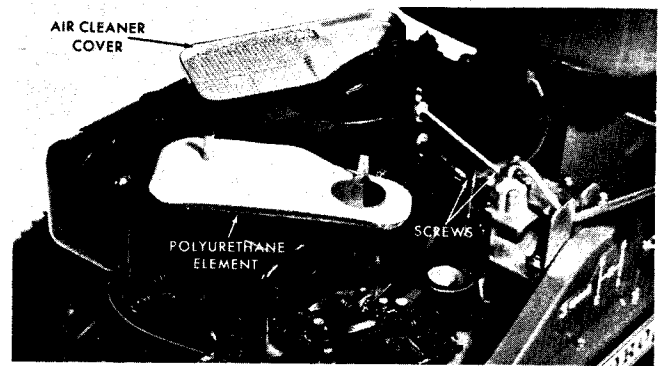
1. Close needle valve "A" by turning to right (clockwise). CLOSE FINGER-TIGHT ONLY.
2. Open two (2) turns (counterclockwise).
3. With engine running at approximately 3,000 R.P.M.'s, turn needle valve clockwise until engine starts to lose speed (lean mixture).
4. Slowly turn needle valve counterclockwise past the point of smoothest operation — until engine begins to run unevenly.

**NOTE:** Under load, this mixture will give best performance.

5. To check adjustment, move throttle control from SLOW to FAST speed.

**IMPORTANT:** If engine tends to stall or die out, it usually indicates a lean mixture and it may be necessary to open the needle valve slightly to provide a richer mixture. This mixture may cause a light unevenness in idling.

## SERVICING THE AIR CLEANER

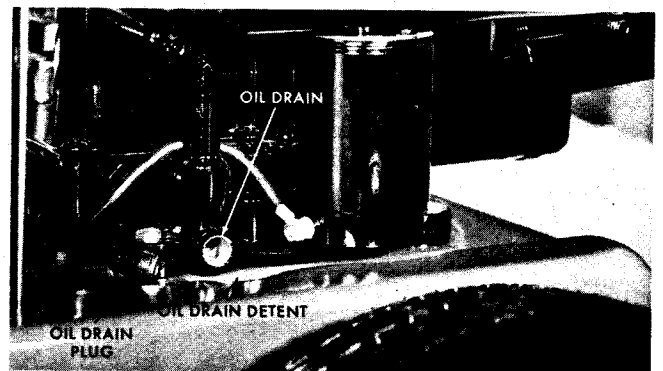


Your engine is equipped with a polyurethane type element. Clean air cleaner and re-oil element every 25 hours under normal conditions. Clean every few hours under extremely dusty conditions. To clean, proceed as follows:

1. Remove screw.
2. Remove air cleaner carefully to prevent dirt from entering carburetor.
3. Disassemble air cleaner and clean.
4. Wash polyurethane element in kerosene or a liquid detergent and water to remove dirt.
5. Completely dry element by wrapping and squeezing in a cloth.
6. Soak element with engine oil. Squeeze to distribute and remove excess oil.
7. Reassembly parts and fasten to carburetor.
8. Never run engine with air cleaner disassembled.

**IMPORTANT:** Never run engine without the air cleaner polyurethane element in place.

## DRAINING THE CRANKCASE OIL



Drain oil while engine is warm and proceed as follows:

1. Remove oil drain plug.
2. Allow oil to drain through drain detent into a cottage cheese or milk carton which can be disposed of easily.
3. Replace oil drain plug and refill with fresh oil.

# SPECIFICATIONS

## 7 H.P. REAR ENGINE RIDER RECOIL START MODEL NO. 56100

**ENGINE:** Briggs & Stratton Model No. 170702-1163

**FUEL TANK CAPACITY:** 3 Quarts on engine

**TRANSMISSION:** 3 speed forward and 1 reverse die cast aluminum housing with enclosed hardened steel gears.

Reductions: 1st — 3.94:1      3rd — 1.75:1  
                  2nd — 2.62:1      Rev. — 3.94:1

**TRACTION DRIVE:** "4L" section V-belt from 2.28 P.D. engine pulley to 5.54 P.D. transmission input pulley (2.43:1 reduction) No. 41 chain on 8T transmission output shaft to 45T sprocket on differential (5.625:1 reduction). Total reduction engine to wheels:

1st — 53.85      3rd — 23.91  
2nd — 35.81      Rev. — 53.85

**TRANSMISSION LUBRICATION:** Permanently lubricated with 9.75 — 10.5 oz. Shell Epro 71030.

**DIFFERENTIAL:** Die cast aluminum housing with enclosed sintered powder metal bevel gears. 7/8 axle shafts. Permanently lubricated with 3/4 — 1 1/4 oz. of Shell Epro 71030.

**SPEEDS:** At 3400 engine RPM

1st — 2.7 MPH      3rd — 6.1 MPH  
2nd — 4.0 MPH      Rev. — 2.7 MPH

**WHEELS:** Front and rear — stamped steel discs with drop center rims.

### TIRES:

Front: 11 x 4.00-5 tubeless pneumatic terra-tire.  
Rear: 15 x 6.00-6 tubeless pneumatic terra-tire.

**CONSTRUCTION:** 12 gauge HRPO steel formed channel with 10 GA (.134) steel engine and differential support at rear. 5/8" diameter CRS Spindles. 10 GA (.134) front axle.

**STEERING:** 13" Diameter 3 spoke 5" deep dish steering wheel — 3:1 ratio

**CUTTER DRIVE:** Belt drive from engine shaft.

**CUTTER HOUSING:** Semi-floating 14 GA (.074) tempered steel housing attached to frame by two steel 5/16 screws.

**CUTTER WIDTH:** 32"

**BLADE:** two 8 gauge 16 — 3/8" fully hardened alloy steel.

**BLADE TIP SPEED:** 13,600 FPM @ 3400 engine RPM.

**CUTTER SPINDLE:** Steel mounted in 2 single rows, double sealed roller bearings.

**HEIGHT OF CUT:** 2" to 3 1/2". Control lever with four height variations.

### CONTROLS:

**Engine:** Control wire and casing with stop, slow, fast and choke positions mounted on center channel.

**Transmission:** Single lever with 4 position H pattern.

**Traction Clutch:** Foot operated pedal. Depressing pedal disengages idler pulley from belt.

**Cutter:** Single lever. In lock-out position blade belt idler is disengaged and blade brake applied. In engaged position, brake is released and cutter belt engaged.

### DIMENSIONS:

Wheel base: 40 1/2"

Wheel tread: 22-3/8" front

25-1/8" rear

26 1/2" front — outside to outside

30-7/8" rear — outside to outside

Turning radius: 35"

Length: 55"

Width: 29"

Height: 39 1/4"

**WEIGHT:** 248 pounds with 32" cutter

**SAFETY FEATURES:** Meets U.S.A.S. Specifications. Separate brake and clutch control. Automatic blade brake. Enclosed and guarded drive.

**BRAKE:** Foot operated pedal — right side. Depressing pedal engages band on 2 1/2" dia. drum, with parking brake.

### OPTIONAL ACCESSORIES & ATTACHMENTS:

Bagging Kit

Tire Chains

30" Snow Blade Kit

Dump Cart

Stand Bar Kit

# SPECIFICATIONS

## 7 H.P. REAR ENGINE RIDER ELECTRIC START MODEL NO. 56150

**ENGINE:** Briggs & Stratton Model No. 170705-1164

**FUEL TANK CAPACITY:** 3 quarts on engine

**TRANSMISSION:** 3 speed forward and 1 reverse die cast aluminum housing with enclosed hardened steel gears.

Reductions: 1st — 3.94:1      3rd — 1.75:1  
2nd — 2.62:1      Rev. — 3.94:1

**TRACTION DRIVE:** "4L" section V-belt from 2.28 P.D. engine pulley to 5.54 P.D. transmission input pulley (2.43:1 reduction) No. 41 chain on 8T transmission output shaft to 45T sprocket on differential (5.625:1 reduction). Total reduction engine to wheels:

1st — 53.85      3rd — 23.91  
2nd — 35.81      Rev. — 53.85

**TRANSMISSION LUBRICATION:** Permanently lubricated with 9.75 — 10.5 oz. Shell Epro 71030.

**DIFFERENTIAL:** Die case aluminum housing with enclosed sintered powder metal bevel gears. 7/8 axle shafts. Permanently lubricated with 3/4 — 1 1/4 oz. of Shell Epro 71030.

**SPEEDS:** At 3400 engine RPM

1st — 2.7 MPH      3rd — 6.1 MPH  
2nd — 4.0 MPH      Rev. — 2.7 MPH

**WHEELS:** Front and rear — stamped steel discs with drop center rims.

**TIRES:**

Front: 11 x 4.00-5 tubeless pneumatic terra-tire.  
Rear: 15 x 6.00-6 tubeless pneumatic terra-tire.

**ELECTRICAL SYSTEM:** 12 Volt battery, Starter, and Key Switch

**CONSTRUCTION:** 12 GA HRPO steel formed channel with 10 GA (.134) steel engine and differential support at rear. 5/8" diameter CRS Spindles. 10 GA (.134)

**STEERING:** 13" Diameter 3 spoke 5" deep dish steering wheel — 3:1 ratio

**CUTTER DRIVE:** Belt drive from engine shaft.

**CUTTER HOUSING:** Semi-floating 14 GA (.074) tempered steel housing attached to frame by two steel 5/16 screws.

**CUTTER WIDTH:** 32"

**BLADE:** Two 8 gauge 16-3/8" fully hardened alloy steel.

**BLADE TIP SPEED:** 13,600 FPM @ 3400 engine RPM

**CUTTER SPINDLE:** Steel mounted in 2 single rows, double sealed roller bearings.

**HEIGHT OF CUT:** 2" to 3 1/2". Control lever with four height variations.

**CONTROLS:**

**Engine:** Control wire and casing with stop, slow, fast and choke positions mounted on center channel.

**Transmission:** Single lever with 4 position H pattern.

**Traction Clutch:** Foot operated pedal. Depressing pedal disengages idler pulley from belt.

**Cutter:** Single lever. In lock-out position blade belt idler is disengaged and blade brake applied. In engaged position, brake is released and cutter belt engaged.

**DIMENSIONS:**

Wheel base: 40 1/2"  
Wheel tread: 22-3/8" front  
25-1/8" rear  
26 1/2" front — outside to outside  
30-7/8" rear — outside to outside  
Turning radius: 35"  
Length: 55"  
Width: 29"  
Height: 39 1/4"

**WEIGHT:** 278 pounds with 32" cutter

**SAFETY FEATURES:** Meets U.S.A.S. specifications. Separate brake and clutch control. Automatic blade brake. Enclosed and guarded drive.

**BRAKE:** Foot operated pedal — right side. Depressing pedal engages band on 2 1/2" dia. drum, with parking brake.

**OPTIONAL ACCESSORIES & ATTACHMENTS:**

Bagging Kit  
Tire Chains  
30" Snow Blade Kit  
Dump Cart  
Trimmer  
Stand Bar Kit



We Take Care™

## OFF SEASON STORAGE

In the event rider is to be stored for any length of time (30 days or more) or at the end of the mowing season, prepare as follows:

1. Drain fuel tank completely to prevent gum deposits from forming in the carburetor, fuel line and gas tank. Run the engine until gas from carburetor has been expended.

**CAUTION: Drain gasoline into container outdoors away from fire or flame.**

2. Drain crankcase oil while engine is warm. Refill with fresh oil.
3. Remove spark plug, pour one (1) ounce of SAE-30 oil

into cylinder. Crank engine once to distribute oil. Replace spark plug.

**IMPORTANT: On electric start model, remove battery and store in a cool, dry location. Approximately every 30 days check to make certain battery is fully charged. If necessary use a trickle charge to fully charge the battery.**

**CAUTION: Do not store battery in a cold place. Extreme cold may cause battery to freeze and crack.**

## IMPORTANT ORDERING INSTRUCTIONS

Repair parts are available from your TORO dealer.

To insure getting correct parts without delay, please furnish the following information:

1. Serial number of your rider as shown on the name plate.

2. Part number, description and quantity of each part required.
3. State whether parts should be shipped by mail or express. All repair parts are shipped F.O.B. factory.
4. Name and address where parts are to be shipped.
5. Do not order by reference number; use part number only.

## THE TORO PROMISE

It is Toro's policy to design and produce Toro products to provide our customers with a high level of performance and durability in normal operation. Our products, however, are produced in high volume, and it is inevitable that occasionally a unit will reach a customer with a defect in materials or workmanship which causes that unit to fall below the normal high level of Toro

performance. Invariably, such a defect will be noticed in a residential product within one year, and in an institutional product within ninety days after purchase. Recognizing this possibility, Toro has established a simple guarantee policy and procedure that is intended to assure customer satisfaction. This guarantee statement is as follows:

### The Toro Promise

*Toro Manufacturing Corporation promises to repair any TORO product for the original purchaser if defective in materials or workmanship. The following time periods from the date of purchase apply:*

Residential products . . . . .	1 year
Residential products used commercially. . . . .	45 days
Institutional products . . . . .	90 days

*The costs of parts and labor are included, but the customer pays the transportation costs. Just return any residential product to a TORO Service Dealer, or any institutional product to a TORO distributor.*

Should you feel that a product is defective, and wish to rely on The Toro Promise, the following procedure is recommended:

1. Contact any TORO dealer or distributor, but preferably the dealer or distributor from whom you purchased the product.
2. He will instruct you to either return the product to him, or tell you the name and address of your nearest TORO Service Dealer if the product is to be returned to such dealer.
3. Take the product and your original sales slip, or other evidence of purchase date, to the servicing dealer.

4. The servicing dealer will inspect the unit, advise you whether the product is defective and, if so, make all repairs necessary to correct the defect without extra charge to you.

If for any reason you are dissatisfied with the dealer's analysis of the defect or the service he performs, we urge you to contact us. Write:

**TORO "Customer Care" Department  
8111 Lyndale Avenue South  
Minneapolis, Minnesota 55420**