



High Flow Case Drain Kit

GrandStand® Multi Force Mower

Model No. 136-7436

Installation Instructions

Installation

Loose Parts

Use the chart below to verify that all parts have been shipped.

Description	Qty.	Use
No parts required	–	Prepare the machine.
Hose assembly	1	Install the kit.
Hose clamp	1	
Bulkhead fitting	1	
Quick-disconnect fitting	1	
Tee fitting	1	
Dust cap	1	

Note: Determine the left and right sides of the machine from the normal operating position.

Preparing the Machine

1. Park the machine on a level surface.
2. Disengage the PTO, engage the parking brake, and move the motion-control levers outward to the NEUTRAL-LOCK position.
3. Shut off the engine and remove the key.



Installing the Kit

1. Remove the jam nut from the bulkhead fitting and insert the bulkhead fitting into the opening in the cooler cover (Figure 1).

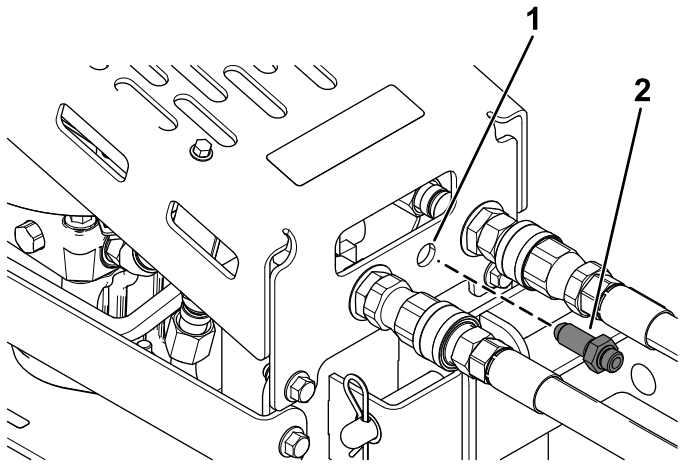


Figure 1

1. Opening in the cooler cover
2. Bulkhead fitting

2. Secure the bulkhead fitting to the cooler cover using the previously removed jam nut (Figure 2).

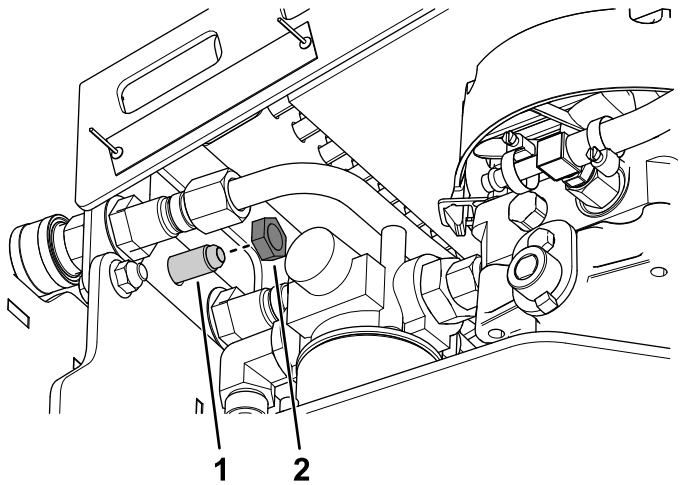


Figure 2

1. Bulkhead fitting
2. Jam nut

3. Install the dust cap over the bulkhead fitting and connect the quick-disconnect fitting to the bulkhead fitting (Figure 3).

Torque the quick-disconnect fitting to 46 to 57 N·m (34 to 42 ft-lb).

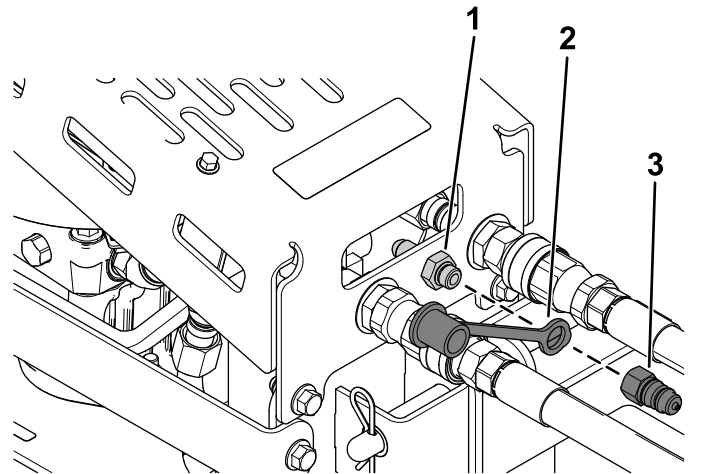


Figure 3

1. Bulkhead fitting
2. Dust cap
3. Quick-disconnect fitting

4. Secure the hose assembly to the bulkhead fitting (Figure 4).

Torque the swivel nut on the hose assembly to 20 to 28 N·m (15 to 21 ft-lb).

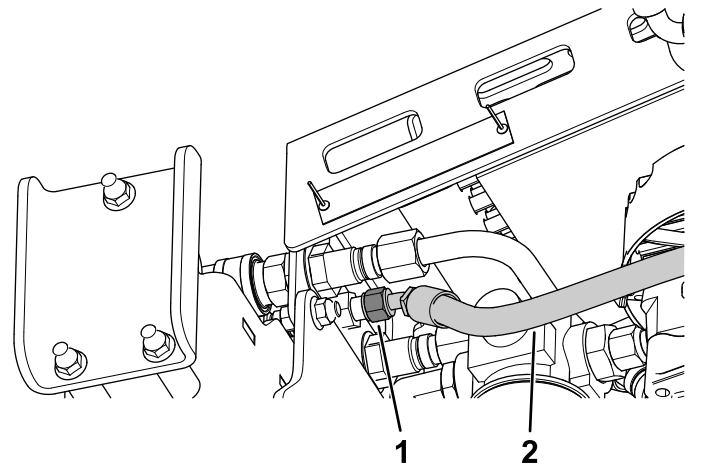


Figure 4

1. Swivel nut
2. Hose assembly

5. Remove the elbow fitting from the fitting on the hydraulic pump (Figure 5).

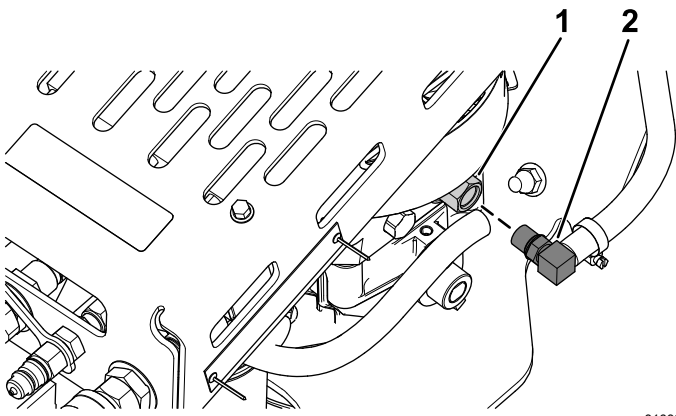


Figure 5

g316398

1. Fitting on the hydraulic pump
2. Elbow fitting

7. Torque the jam nut on the tee fitting to 27 to 35 N·m (20 to 26 ft-lb).

8. Secure the tee fitting to the hose assembly using the hose clamp (Figure 7).

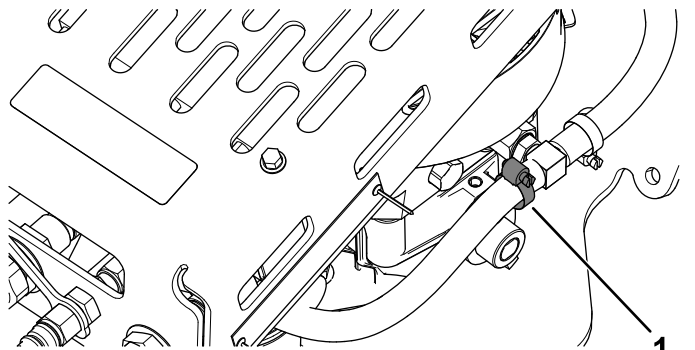


Figure 7

g316393

1. Hose clamp

6. Using a backup wrench, tighten the tee fitting into the fitting on the hydraulic pump and connect the 2 hoses to the tee fitting (Figure 6).

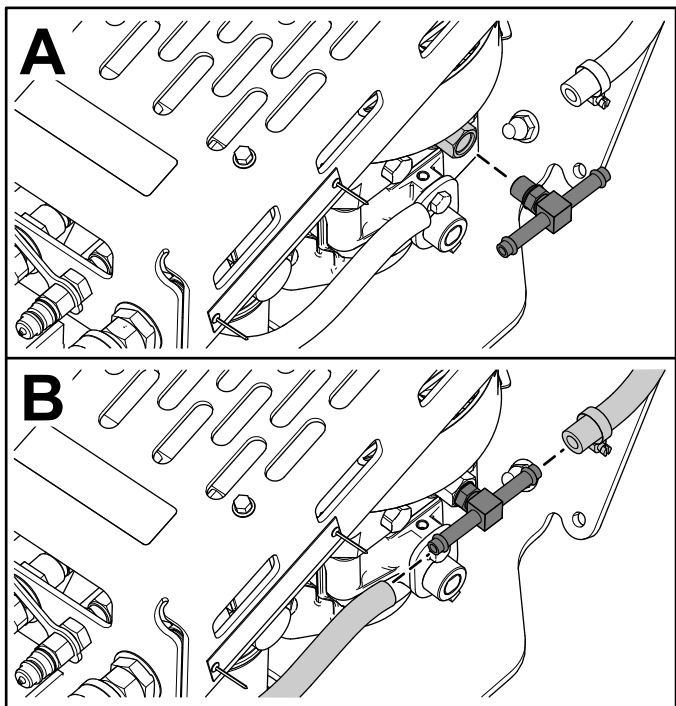


Figure 6

g316396



Count on it.