

# Hour Meter Kit

## 2011 and After Zero-Turn-Radius Riding Mower

Model No. 116-5461

### Installation Instructions

---

# Installation

## Loose Parts

Use the chart below to verify that all parts have been shipped.

Description	Qty.	Use
No parts required	–	Prepare the machine.
Hour meter	1	Install the hour meter.

## Preparing the Machine

1. Shut off the engine, remove the key, and wait for all moving parts to stop before leaving the operating position.
2. Disengage the PTO, move the motion-control levers to the NEUTRAL-LOCK position, and engage the parking brake.



# Installing the Hour Meter

## For Machines with the Hour Meter Located Behind the Seat

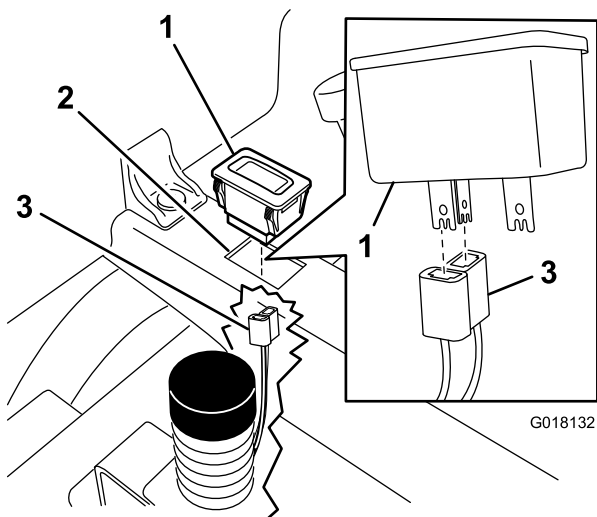
For 2011 to 2019 machines with the MyRide™ suspension system, the hour meter is located on the right pod-mounting bracket.

1. Raise the seat.
2. Locate the existing cutout on the seat support, the main wire harness leading to the seat switch, and the hour meter lead affixed to that wire harness.
3. Detach the hour-meter connector from the wire harness, move it rearward, and pull it upward through the cutout in the seat support.
4. Connect the hour meter to the wire harness (Figure 1).

Insert the 2 perpendicular prongs of the hour meter into the 2 slots in the hour-meter connector as shown in Figure 1.

5. Install the hour meter into the cutout (Figure 1).

**Note:** Push gently until the clip snaps into place.



**Figure 1**

1. Hour meter
2. Cutout in the seat support
3. Existing hour-meter connector

- 
6. Lower the seat.

## For Machines with the Hour Meter Located in the Control Panel

1. Locate the cutout location for the hour meter in the control panel, and cut an X-pattern or remove the rectangular portion of the decal (Figure 2).

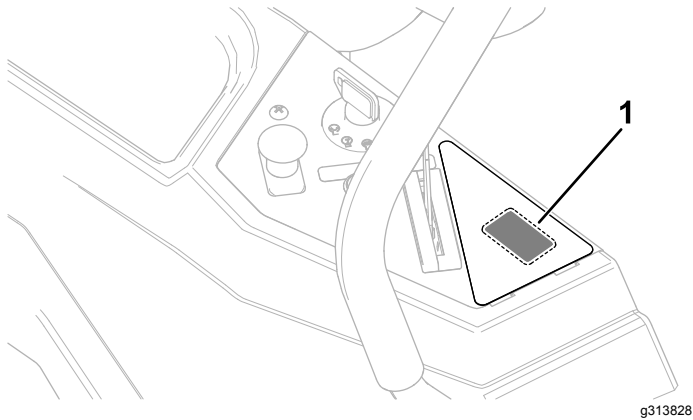


Figure 2

1. Cutout location

2. Locate the main wire harness leading to the key switch and the hour-meter connector affixed to that wire harness (Figure 3).

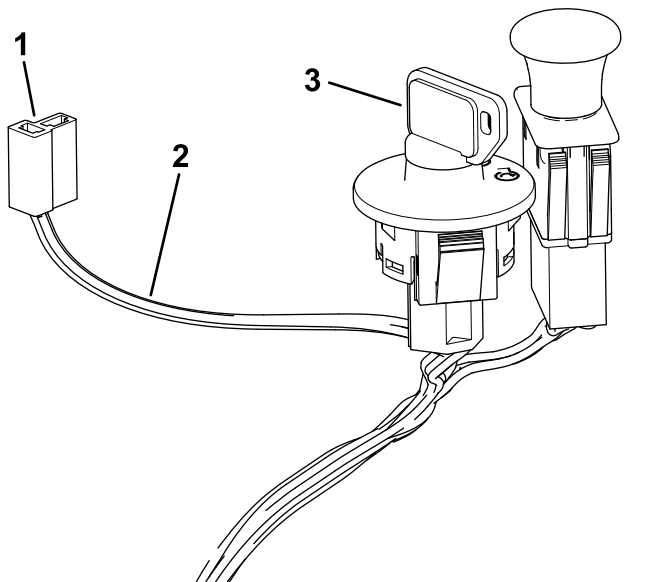


Figure 3

1. Hour-meter connector
2. Wire harness
3. Key switch

3. Detach the hour-meter connector from the wire harness, move it forward, and pull it upward through the cutout in the control panel.
4. Connect the hour meter to the wire harness (Figure 4).

Insert the 2 perpendicular prongs of the hour meter into the 2 slots in the hour-meter connector as shown in Figure 4.

5. Install the hour meter into the cutout (Figure 4).

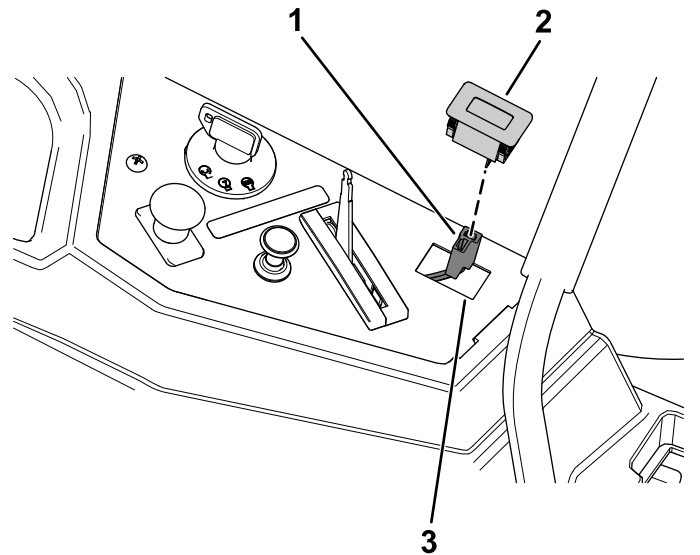


Figure 4

1. Existing hour-meter connector
2. Hour meter
3. Cutout in the seat support connector

