



Light Kit

GrandStand® Mower

Model No. 133-1437

Installation Instructions

Note: Determine the left and right sides of the machine from the normal operating position.

Note: Install this kit before installing other accessories with a wire harness.

Installation

Loose Parts

Use the chart below to verify that all parts have been shipped.

Description	Qty.	Use
Light assembly	1	Install the lights.
Rear light	1	
Spacer	1	
Bolt	2	
Nut	2	
Light switch	1	
Cable ties	6	Route the wire harness.

Installing the Lights

1. Shut off the engine, wait for all moving parts to stop, engage the parking brake, and remove the key.
2. Remove the negative (-) battery cable from the battery.
3. Remove the fuel tank; refer to the *Operator's Manual* for the machine.
4. Remove and discard the knock-out from the tower panel ([Figure 1](#)).

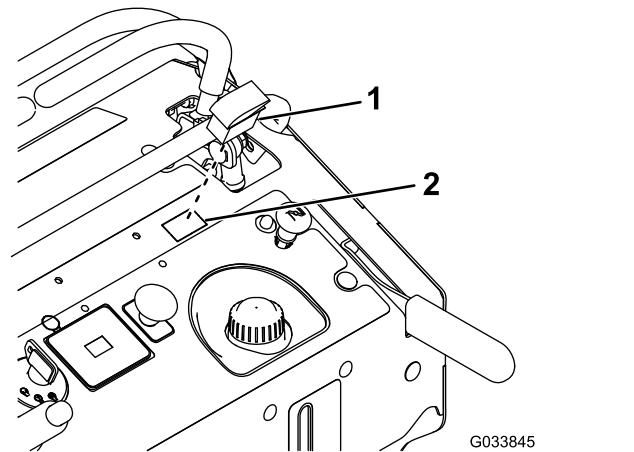


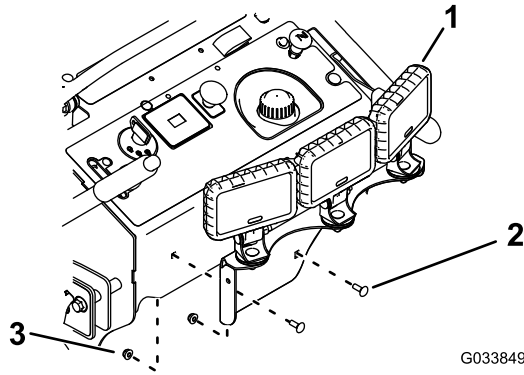
Figure 1

1. Light switch

2. Knock-out location



5. Install the light switch (Figure 1).
6. Mount the light assembly to the front of the control panel using 2 bolts and 2 nuts (Figure 2).



G033849

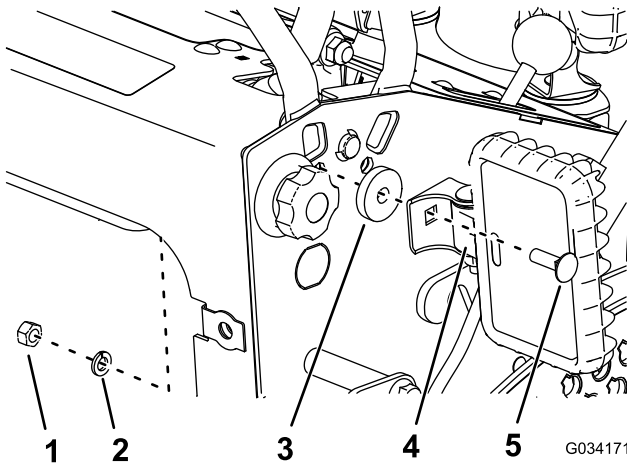
g033849

Figure 2
Wire Harness Not Shown

1. Light assembly
2. Bolt
3. Nut

7. Remove the bolt, washer, and nut from the rear light and use them to install the rear light and spacer on the right side of the control panel (Figure 3).

Note: If there is no hole, drill a hole using a 3/8-inch drill bit.



G034171

g034171

Figure 3

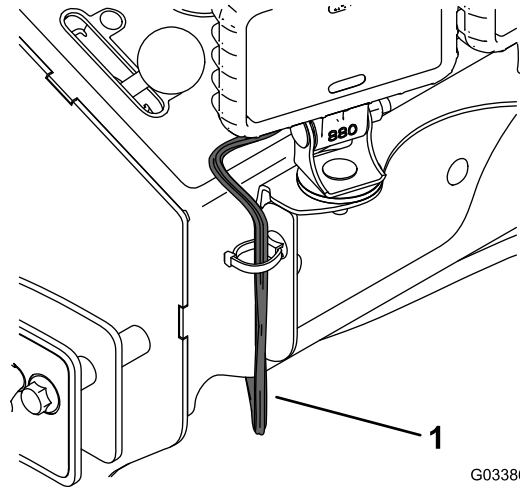
1. Nut
2. Lock washer
3. Spacer
4. Rear light
5. Bolt

Routing the Wire Harness

1. Route the wire harness under the front of the control panel and plug the connectors into the light switch and the wire harness for the machine (Figure 4 and Figure 5).

Note: The other 3 connectors on the wire harness are used with other accessories (sold separately) for the machine. If another accessory is already plugged into the machine wire harness, unplug it and plug it into a light kit accessory connector. Do not plug the light kit into the wire harness for an accessory; otherwise, the lights may not function.

If you install another electrical accessory, plug it into the light kit accessory connector instead of the machine wire harness.

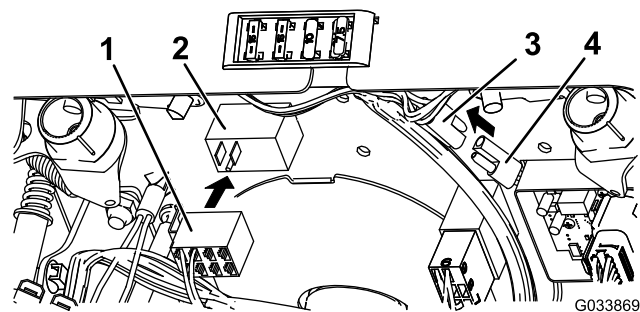


G033868

g033868

Figure 4

1. Wire harness



G033869

g033869

Figure 5

1. Plug into the light switch.
2. Light switch
3. Machine wire-harness connector
4. Plug into the wire-harness connector.

2. Route the wire harness to the rear of the machine and plug the connector into the rear light (Figure 6).

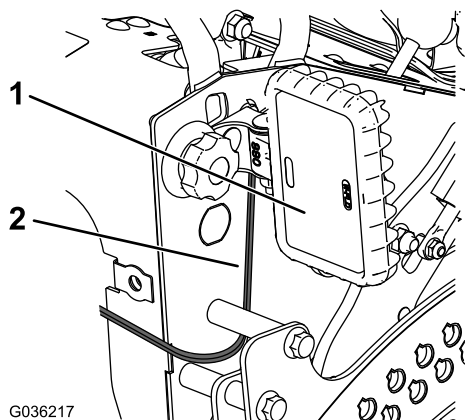


Figure 6

1. Rear light
2. Wire harness

-
3. Secure the wire harness to the machine with cable ties.

Note: Ensure that none of the wires interfere with the operator cushion or the height-of-cut lever.

4. Install the fuel tank; refer to the *Operator's Manual* for the machine.

Important: Ensure that the wire harness is routed above the fuel tank and bracket, not to the side.

5. Raise the cushion.
6. Install the negative (-) battery cable to the battery.



Count on it.