



4 IN 1 Bucket
Dingo[®] Attachment
Model No. 22411—20000201 and Up

Parts Catalog

Ordering Replacement Parts

To order replacement parts, please supply: the part number, the quantity, and the description of each part desired.

Understanding Reference Numbers

Each identified part in an illustration has a reference number. The reference number for a part also appears in the parts list, along with other information about the part.

This catalog uses two special reference number formats, one to indicate parts in a service assembly and another to indicate the quantity of a given part in an illustration.

Service Assembly Reference Numbers

Parts in service assemblies have reference numbers in the form **a:b**. The **a** represents the reference number of the entire service assembly and the **b** represents a sequential number unique to each part within the service assembly.

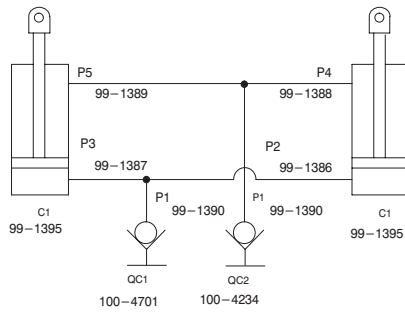
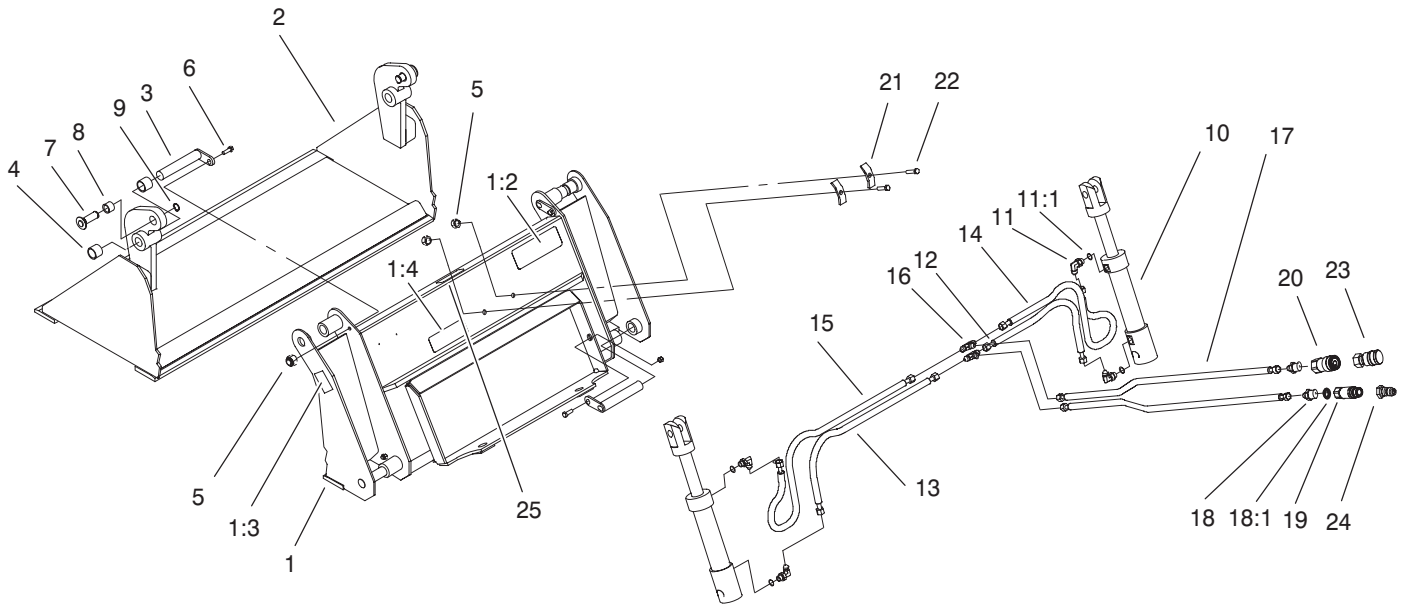
For example, a wheel assembly might be identified by reference number **6**, the tire by **6:1**, the valve by **6:2**, and the wheel by **6:3**. When you order the assembly identified by reference number **6**, you receive all parts identified by reference numbers **6:1**, **6:2**, and **6:3**. However, you may also order any part individually.

Reference numbers of this type appear in illustrations and in part lists.

Reference Numbers Indicating Quantity

In an illustration, if a reference number indicates more than one part, the reference number has the form **nX y**. The **n** represents the quantity of the part, the **X** is the multiplication symbol, and the **y** represents the reference number.

For example, in an illustration, the reference number **2X 37** means that two of the parts identified by reference number **37** are indicated.



| | Function | Size | Diameter |
|----|----------|---------------|--------------|
| C1 | Clamping | 50/32X 120 | |
| P1 | | | .25 in 6.3mm |
| P2 | | | .25 in 6.3mm |
| P3 | | | .25 in 6.3mm |
| P4 | | | .25 in 6.3mm |
| P5 | | | .25 in 6.3mm |

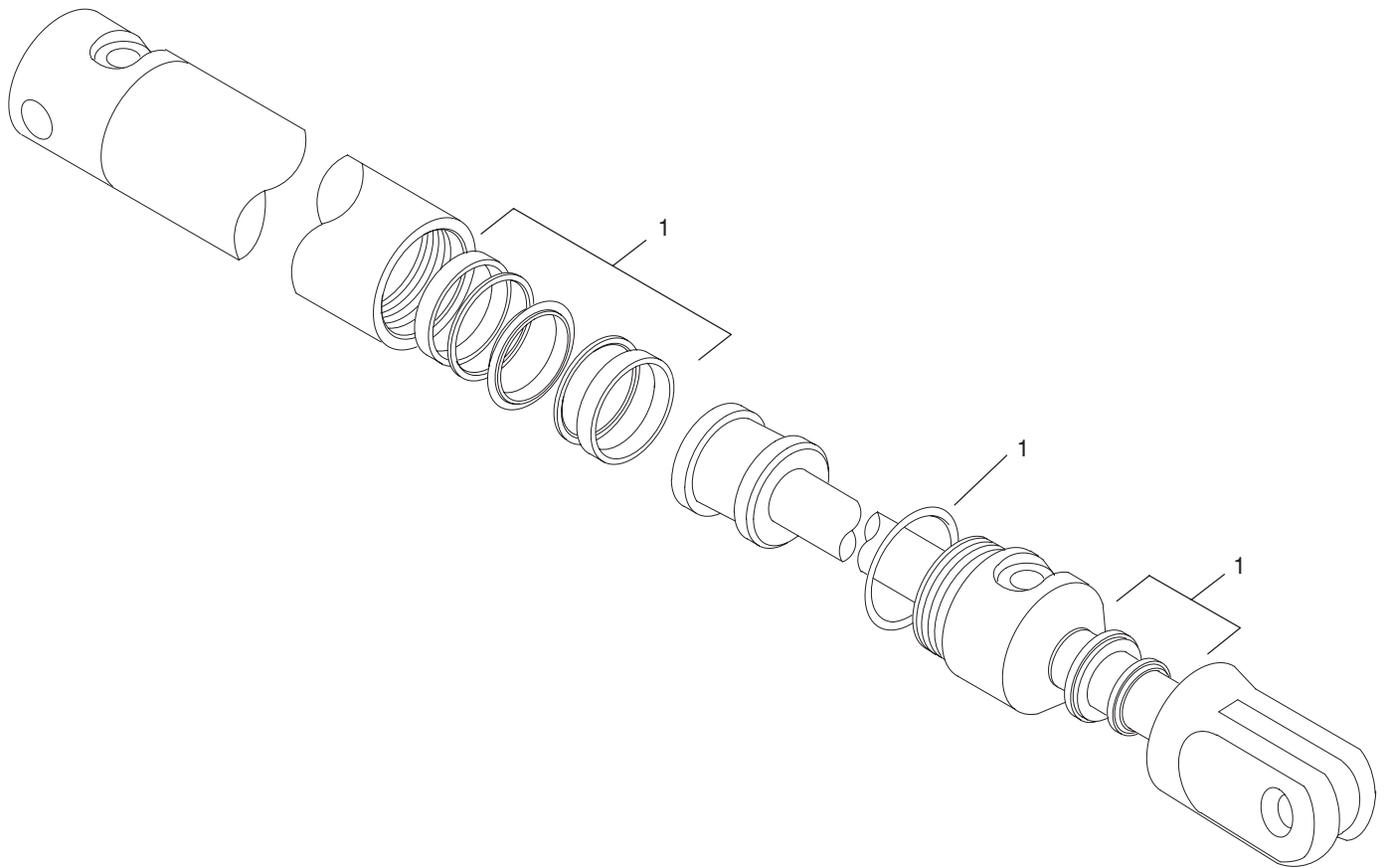
Sheet No.:A1
C-2845

4 in 1 Bucket Assembly

| Ref. No. | Part No. | Qty. | Description |
|----------|-----------|------|--------------------------|
| 1 | 98-2706 | 1 | Base ASM |
| 1:2 | 100-4648 | 1 | Decal-Warning |
| 1:3 | 93-9367 | 1 | Decal-Warning |
| 1:4 | 100-4689 | 1 | Decal-Load Rating |
| 2 | 99-1359 | 1 | Jaw |
| 3 | 99-1361 | 4 | Pin |
| 4 | 99-1363 | 4 | Bushing |
| 5 | 33024-00 | 6 | Nut-Lock |
| 6 | 33104-025 | 4 | Screw-HHF |
| 7 | 99-1362 | 2 | Pin |
| 8 | 99-1364 | 2 | Bushing |
| 9 | 32120-72 | 2 | Ring-Snap |
| 10 | 99-1395 | 2 | Cylinder - Hydraulic |
| 11 | 353-374 | 4 | Elbow - 90° |
| 11:1 | 237-42 | 1 | O-Ring |
| 12 | 99-1386 | 1 | Hose ASM-Hydraulic |
| 13 | 99-1387 | 1 | Hose ASM-Hydraulic |
| 14 | 99-1388 | 1 | Hose ASM-Hydraulic |
| 15 | 99-1389 | 1 | Hose ASM-Hydraulic |
| 16 | 99-1391 | 2 | Adapter - Tee |
| 17 | 99-1390 | 2 | Hose ASM-Hydraulic |
| 18 | 100-4749 | 2 | Adapter-Hydraulic |
| 18:1 | 237-80 | 1 | O-Ring |
| 19 | 100-4701 | 1 | Nipple-Connect, Pressure |
| *19:1 | 100-6120 | 1 | Kit-Seal |

| Ref. No. | Part No. | Qty. | Description |
|----------|-----------|------|--------------------------|
| 20 | 100-4234 | 1 | Coupler-Face, Flush |
| *20:1 | 100-6119 | 1 | Kit-Seal |
| 21 | 99-1360 | 2 | Clamp - Hose |
| 22 | 33104-040 | 2 | Screw-HHF |
| 23 | 100-4703 | 1 | Disconnect-Quick, Female |
| *23:1 | 100-4165 | 1 | Kit-Seal |
| 24 | 100-4702 | 1 | Disconnect-Quick, Male |
| 25 | 98-4683 | 1 | Decal-Attachment, Dingo |

* Not illustrated



Sheet No.:A2
C-2972

Hydraulic Cylinder No. 99-1395

| Ref. No. | Part No. | Qty. | Description |
|----------|----------|------|-------------|
| 1 | 99-1417 | 1 | Kit - Seal |

| Ref. No. | Part No. | Qty. | Description |
|----------|----------|------|-------------|
|----------|----------|------|-------------|

