



Electrical Accessory Port

GrandStand® Mower or ProLine Commercial Walk-Behind Mower

Model No. 133-1438

Installation Instructions

Note: Determine the left and right sides of the machine from the normal operating position.

Note: If your machine has multiple electrical accessories installed, you need a Y adapter (Toro Part No. 121-5988, sold separately) to install this kit.

Installing the Kit to a Grandstand Mower

Preparing the Machine

1. Park the machine on a level surface.
2. Engage the parking brake.
3. Shut off the engine and remove the key.
4. Remove the negative (-) battery cable from the battery.

Installing the 12 V Receptacle

1. Release the cushion.
2. Remove the knockout on the right side of the machine (Figure 1).

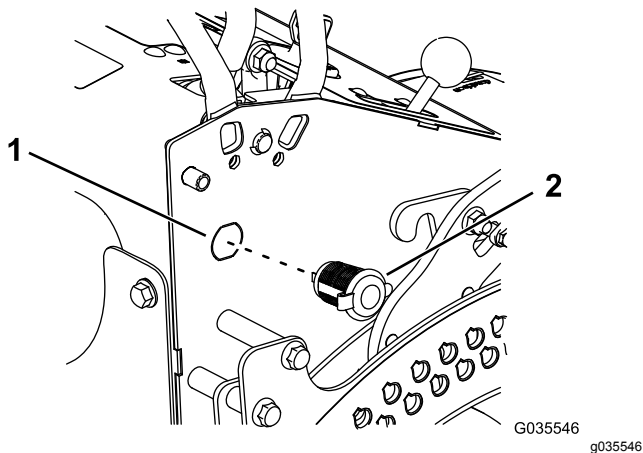


Figure 1

1. Knockout location
2. 12 V receptacle

3. Remove the locking ring from the 12 V receptacle.
4. Install the 12 V receptacle and secure it with the locking ring (Figure 1).

Connecting the Port Wire Harness

1. Install the post connectors from the port wire harness to the posts on the 12 V receptacle (Figure 2).

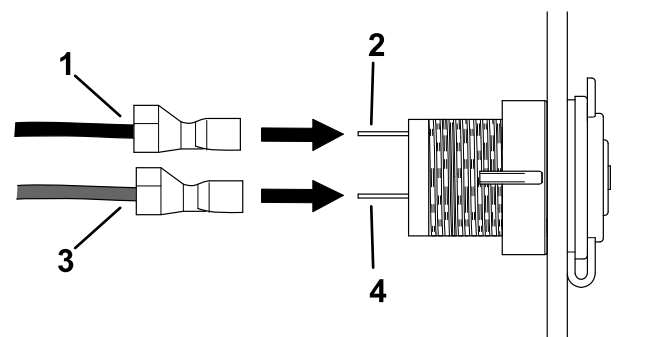


Figure 2

1. Negative (-) connector
2. Negative (-) post
3. Positive (+) connector
4. Positive (+) post

2. Connect the wire harness as follows.

- **Machines without any electric accessories**—connect the port wire harness to the machine wire harness (Figure 3).

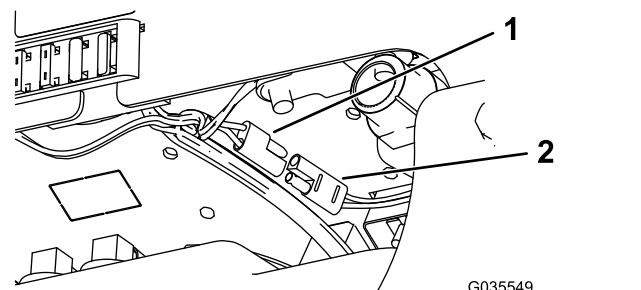


Figure 3

1. Machine wire harness
2. Port wire harness



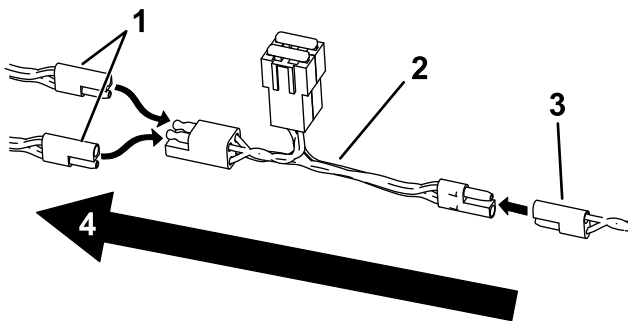
- **Machines with either a light kit or other electric accessory**—connect the port wire harness to the light kit or other accessory wire harness.
- **Machines with both a light kit and other electric accessory**—complete as follows:

Note: You need a Y adapter (Toro Part No. 121-5988, sold separately) to connect the port wire harness with both accessories installed on the machine.

- Disconnect the other accessory from the light kit harness.
- Connect the 1-connection end of the Y adapter to the light kit wire harness (Figure 4).

Important: Do not connect the 2-connection end of the Y adapter to any connectors with outgoing power.

- Connect the port wire harness and the other accessory wire harness to the 2-connector end of the Y adapter (Figure 4).



g311474

Figure 4

- | | |
|---|--------------------------------|
| 1. Port wire harness and other accessory wire harness | 3. Light kit wire harness |
| 2. Y adapter | 4. Direction of outgoing power |

Installing the Kit to a ProLine Mower

Preparing the Machine

1. Park the machine on a level surface.
2. Engage the parking brake.
3. Shut off the engine and remove the key.
4. Remove the negative (-) battery cable from the battery.

Installing the 12 V Receptacle

1. Remove the knockout on the right side of the machine (Figure 5).

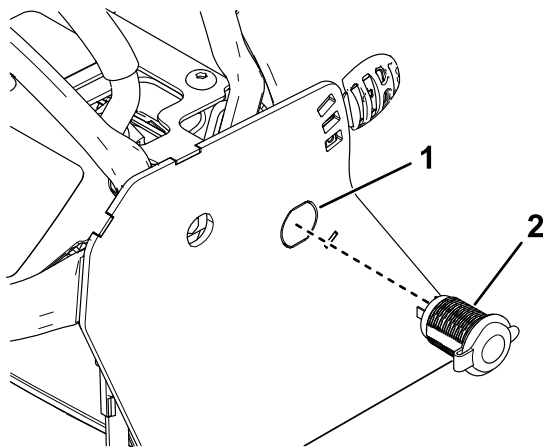


Figure 5

g311409

1. Knockout location
2. 12 V receptacle

2. Remove the locking ring from the 12 V receptacle.
3. Install the 12 V receptacle and secure it with the locking ring (Figure 5).

Connecting the Port Wire Harness

1. Install the post connectors from the wire harness to the posts on the 12 V receptacle.

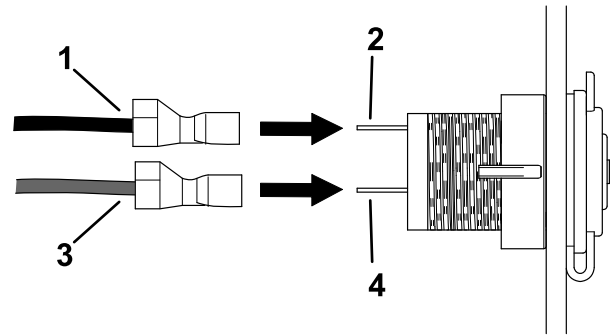


Figure 6

g311406

1. Negative (-) connector
2. Negative (-) post
3. Positive (+) connector
4. Positive (+) post

2. Connect the wire harness as follows.

- **Machines without any electric accessories**—connect the port wire harness to the machine wire harness (Figure 7).

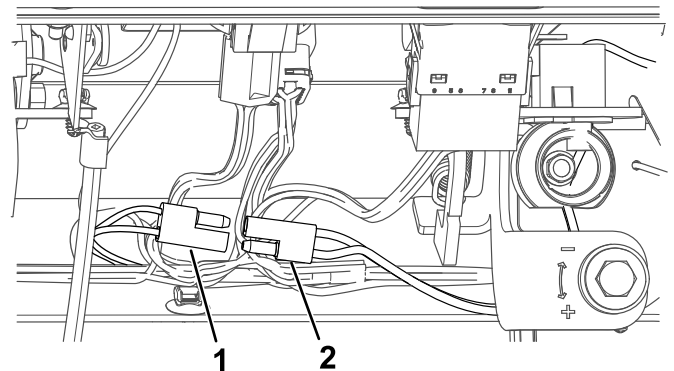


Figure 7

g311418

1. Machine wire harness
2. Port wire harness

- **Machines with another electric accessory**—connect the port wire harness to the accessory wire harness.

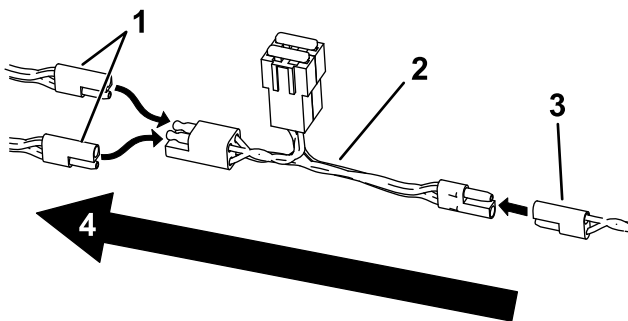
- **Machines with 2 other electric accessories**—complete as follows:

Note: You need a Y adapter (Toro Part No. 121-5988, sold separately) to connect the port wire harness with both accessories installed on the machine.

- Disconnect the second accessory from the accessory connected to the machine wire harness.
- Connect the 1-connection end of the Y adapter to the connected accessory wire harness (Figure 8).

Important: Do not connect the 2-connection end of the Y adapter to any connectors with outgoing power.

- Connect the port wire harness and the other accessory wire harness to the 2-connector end of the Y adapter (Figure 8).



g311474

Figure 8

- | | |
|---|--|
| 1. Port wire harness and other accessory wire harness | 3. Accessory connected to machine wire harness |
| 2. Y adapter | 4. Direction of outgoing power |

Completing the Installation

- Use the cable ties to secure the wire harness away from sharp or moving parts.
- Raise the cushion.
- Connect the negative (-) battery cable to the battery.