



**Count on it.**

**Parts Catalog**

**Flex-Force Power System™ 60V  
MAX**

**Snowthrower**

Model No. 39902—Serial No. 319000001 and Up



# Ordering Replacement Parts

To order replacement parts, please supply the part number, the quantity, and the description of each part desired.

## Understanding Reference Numbers

Each identified part in an illustration has a reference number. The reference number for a part also appears in the parts list, along with other information about the part.

This catalog uses two special reference number formats, one to indicate parts in a service assembly and another to indicate the quantity of a given part in an illustration.

## Service Assembly Reference Numbers

Parts in service assemblies have reference numbers in the form a:b. The a represents the reference number of the entire service assembly and the b represents a sequential number unique to each part within the service assembly.

For example, a wheel assembly might be identified by reference number 6, the tire by 6:1, the valve by 6:2, and the wheel by 6:3. When you order the assembly identified by reference number 6, you receive all parts identified by reference numbers 6:1, 6:2, and 6:3. However, you may also order any part individually. Reference numbers of this type appear in illustration and in parts lists.

## Reference Numbers Indicating Quantity

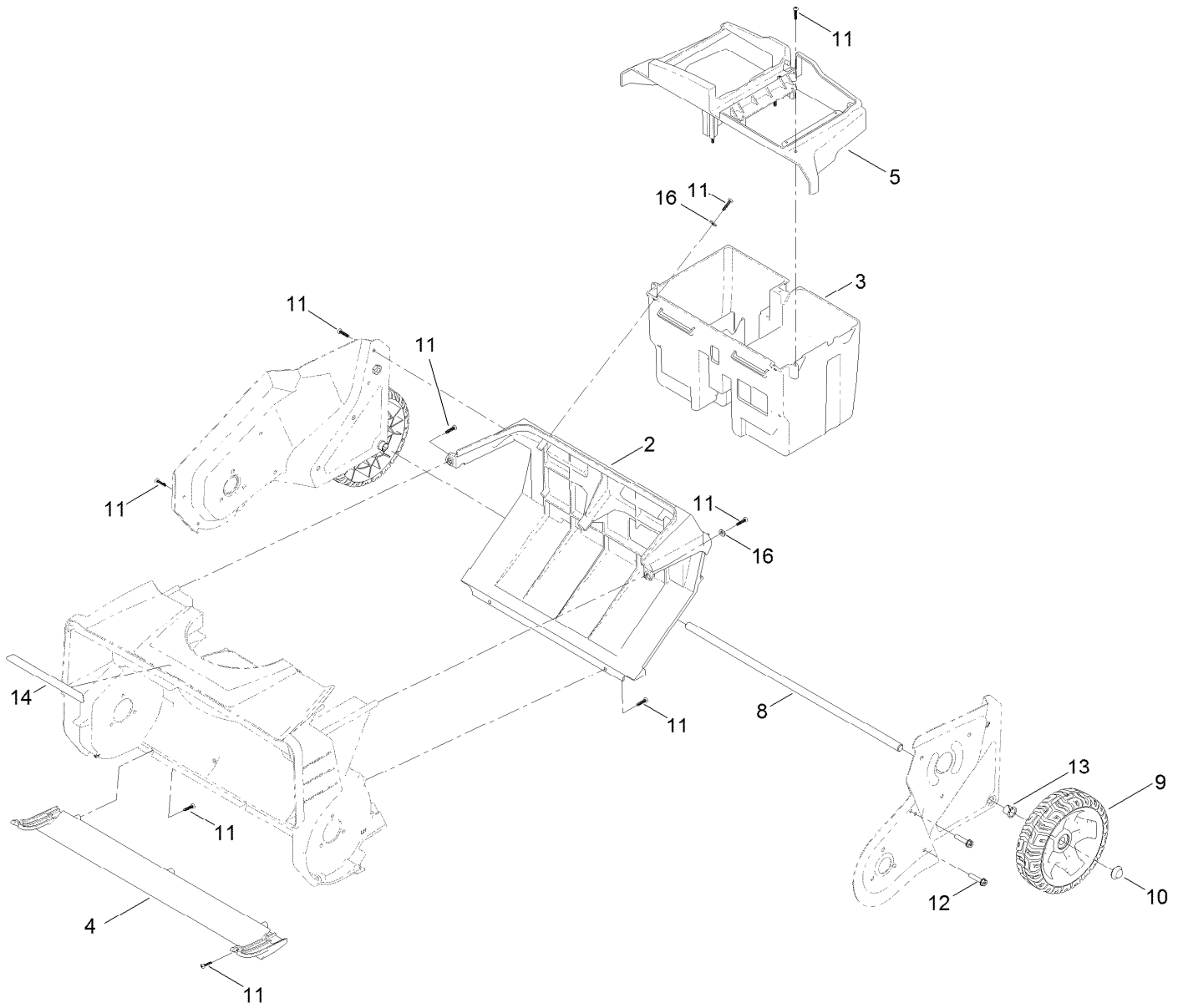
In an illustration, if a reference number indicates more than one part, the reference number has the form nX y. The n represents the quantity of the part, the X is the multiplication symbol, and the y represents the reference number.

For example, in an illustration, the reference number 2X 37 means that two of the parts identified by reference number 37 are indicated.

# Contents

- Frame Assembly ..... 4
- Drive Belt Assembly ..... 6
- Chute Assembly ..... 8
- Handle Assembly ..... 10
- Electrical Assembly ..... 12
- Attachments and Accessories ..... 14

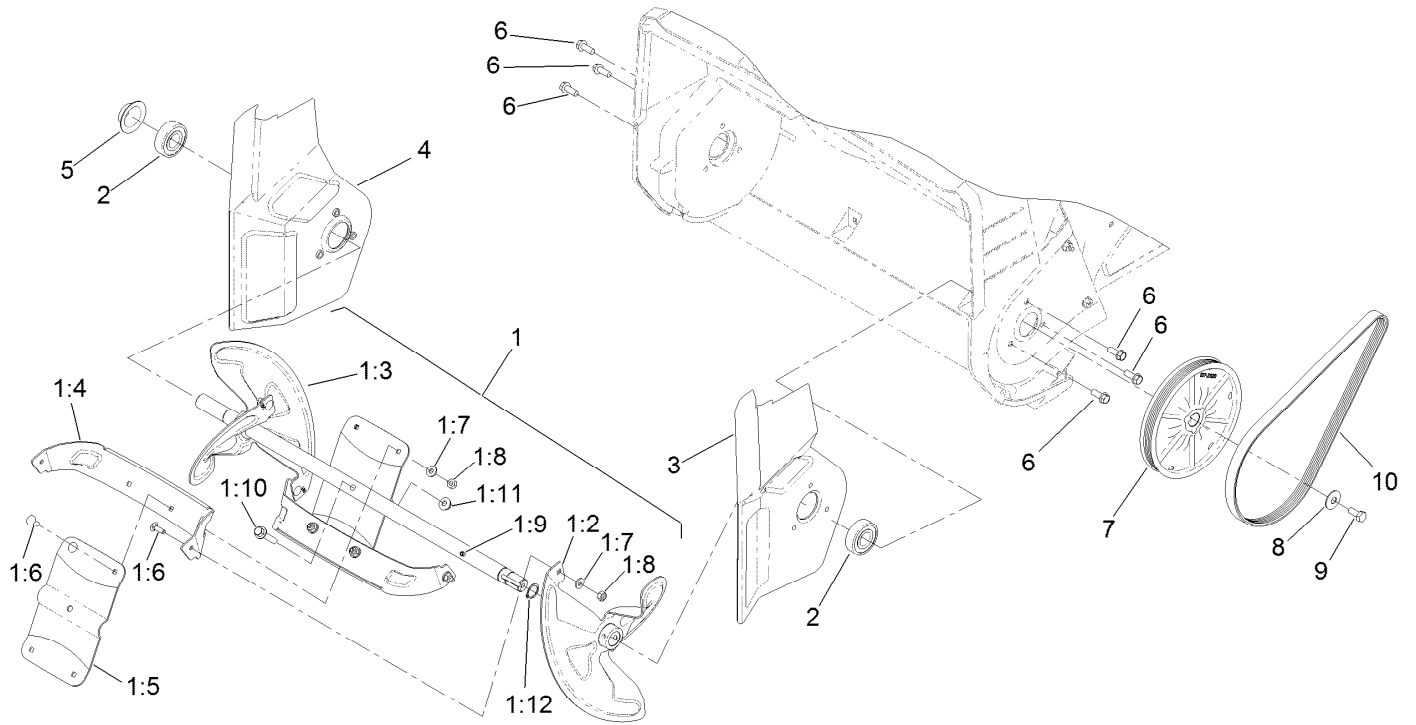
# Frame Assembly



## Frame Assembly (continued)

<i>Ref.</i>	<i>Part Number</i>	<i>Qty.</i>	<i>Description</i>	<i>Ref.</i>	<i>Part Number</i>	<i>Qty.</i>	<i>Description</i>
2	137-2280	1	Bulkhead	10	32112-14	2	Nut-Push
3	137-9425	1	Container-Battery	11	94-4496	25	Screw-PPH
4	137-2277	1	Scraper	12	46-8094	4	Screw-Plastic
5	137-9426	1	Skirt-Container, Battery	13	256-257	2	Bushing-Nyliner
8	137-2256-03	1	Axle	14	137-2333	1	Decal-Power Edge
9	137-9428	2	Wheel ASM	16	3256-77	6	Washer-Flat

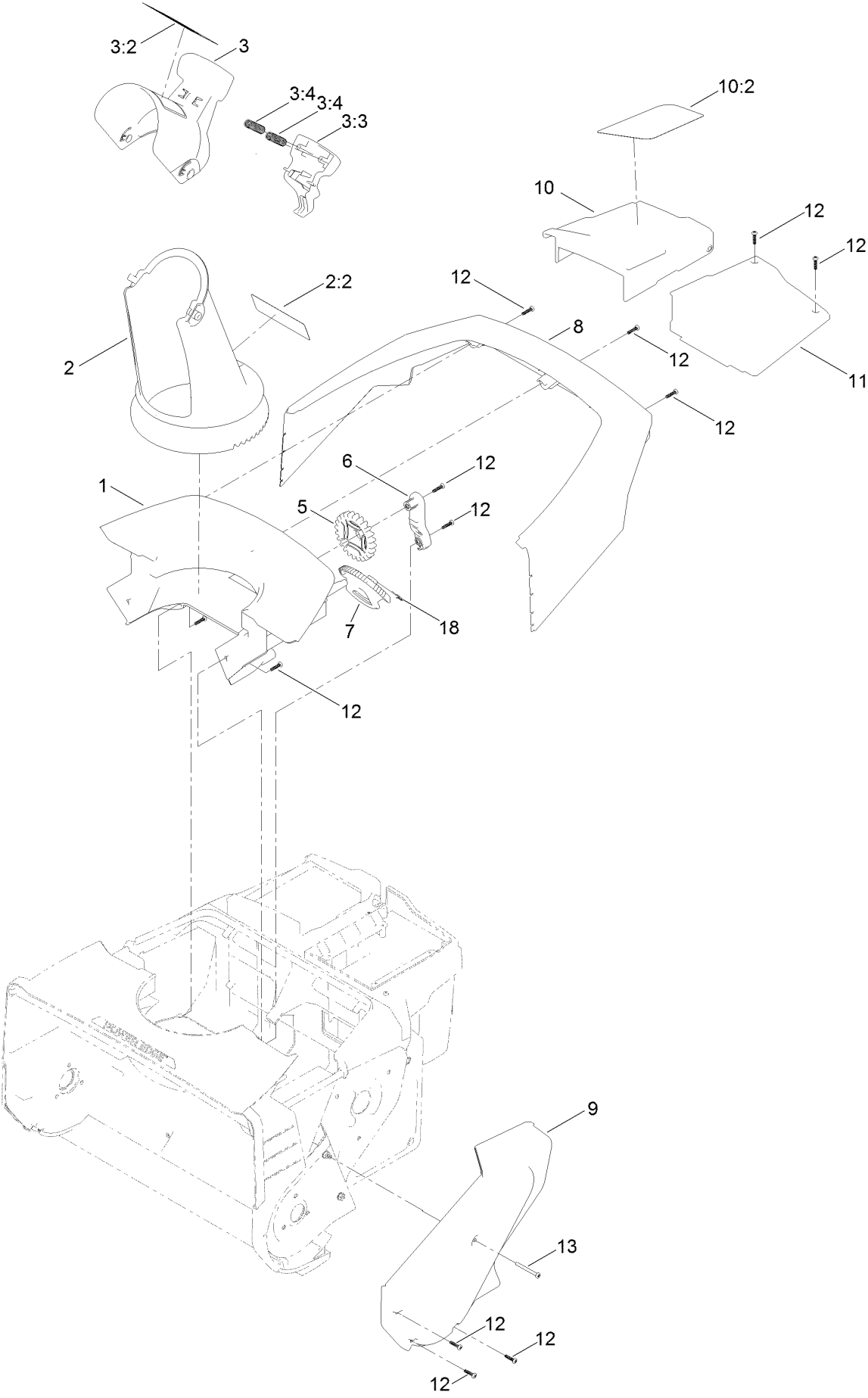
# Drive Belt Assembly



## Drive Belt Assembly (continued)

<i>Ref.</i>	<i>Part Number</i>	<i>Qty.</i>	<i>Description</i>	<i>Ref.</i>	<i>Part Number</i>	<i>Qty.</i>	<i>Description</i>
1	137-9385	1	Rotor ASM	1:12	137-9468	1	Ring-Snap, External
1:2	132-9161	1	Blade-Rotor, LH	2	38-7820	2	Bearing-Ball
1:3	132-9162	1	Blade-Rotor, RH	3	137-9389	1	Extension-LH
1:4	137-9386	2	Rotor-Center	4	137-9388	1	Extension-RH
1:5	137-9387	2	Paddle-Center	5	117-7720	1	Cap-Sideplate, RH
1:6	3229-34	8	Screw-CARR	6	32144-85	6	Screw-HWH
1:7	3256-77	8	Washer-Flat	7	137-2320	1	Rotor Pulley ASM (6 Groove)
1:8	3296-2	8	Nut-Lock, NI	8	3290-456	1	Washer-Belleville
1:9	132-9169	2	Pin-Spiral	9	110-9381	1	Screw-HH
1:10	127-8639	1	Screw-HHF	10	137-9427	1	Belt-V, Ribbed
1:11	104-7201	1	Nut-HF				

# Chute Assembly

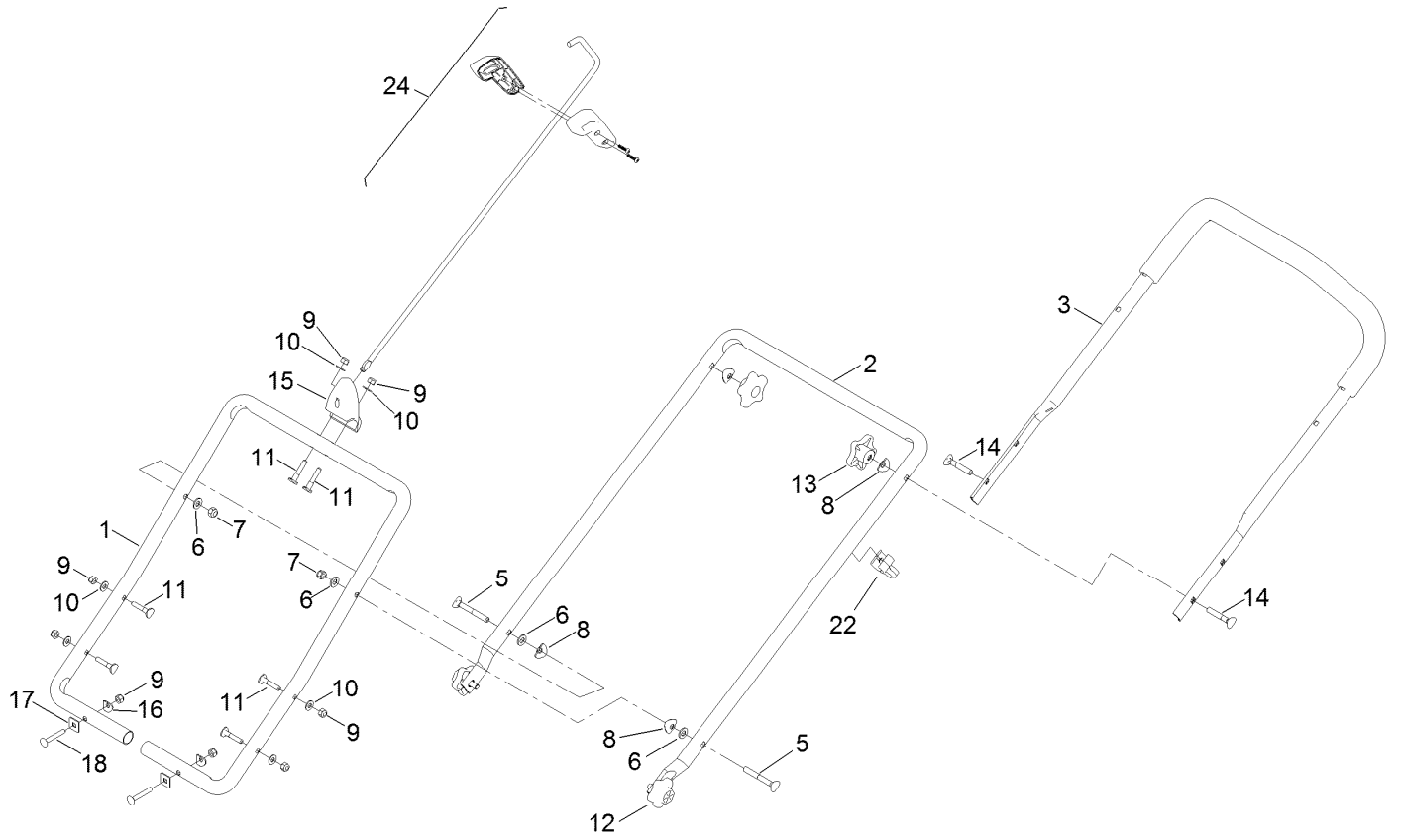




## Chute Assembly (continued)

<i>Ref.</i>	<i>Part Number</i>	<i>Qty.</i>	<i>Description</i>	<i>Ref.</i>	<i>Part Number</i>	<i>Qty.</i>	<i>Description</i>
1	137-2278	1	Chute-Rear	7	139-5234	1	Gear-Sector
2	139-5239	1	Chute	8	137-2279	1	Shroud
2:2	114-9035	1	Decal-Danger, Discharge	9	137-9431	1	Cover-Belt
3	139-5240	1	Deflector-Chute	10	139-5238	1	Cover-Battery
3:2	114-9034	1	Decal-Danger	10:2	137-2332	1	Decal-Battery, 60V Snow
3:3	117-2314	1	Trigger-Deflector	11	137-2283	1	Cover-Controller
3:4	136-7136	2	Spring-Compression	12	94-4496	14	Screw-PPH
5	137-2271	1	Gear-Chute	13	110-3143	1	Screw-Plastic, PPH
6	137-2270	1	Bracket-Gear	18	139-5229	1	Clip-Handle

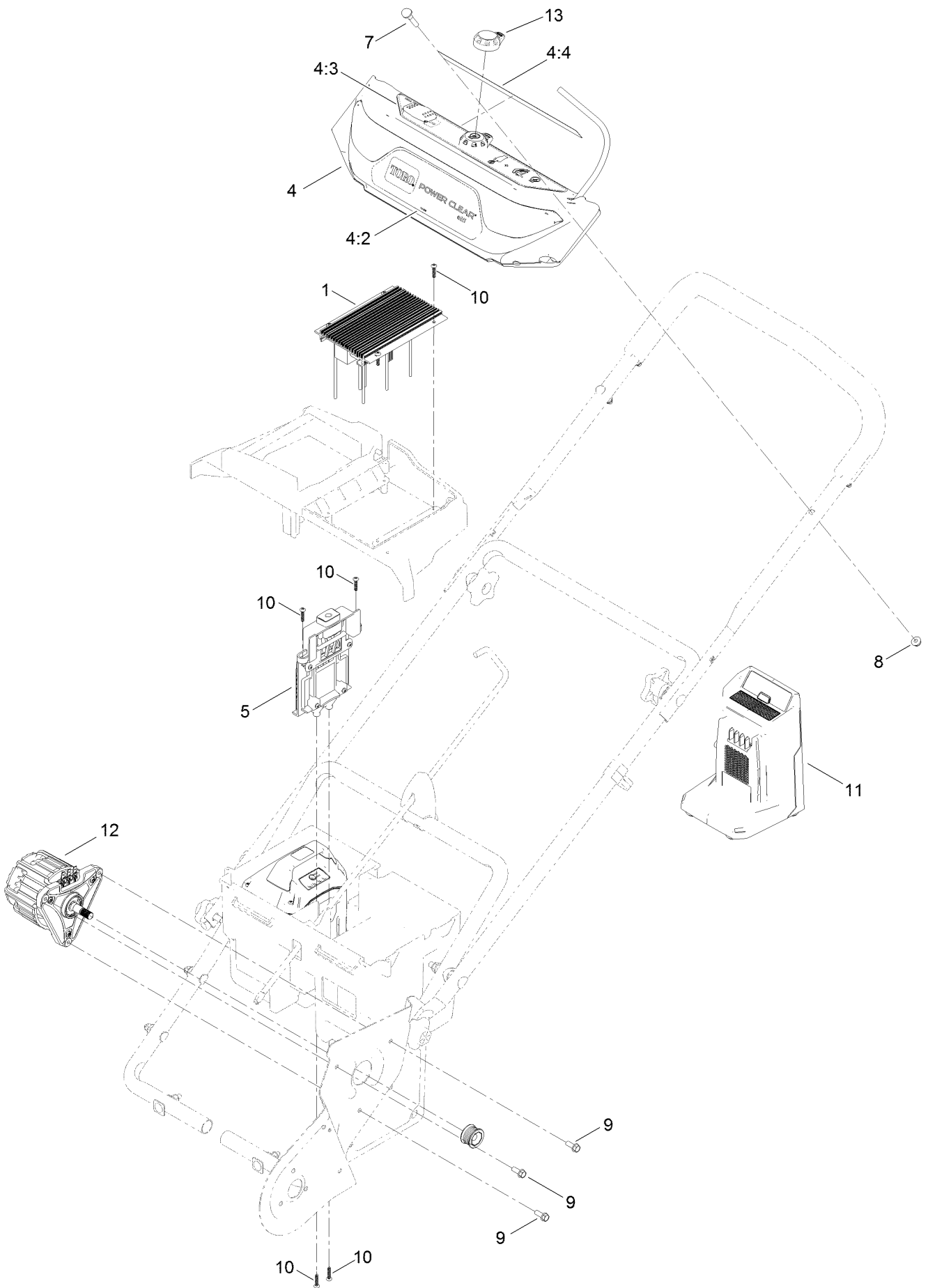
# Handle Assembly



## Handle Assembly (continued)

<i>Ref.</i>	<i>Part Number</i>	<i>Qty.</i>	<i>Description</i>	<i>Ref.</i>	<i>Part Number</i>	<i>Qty.</i>	<i>Description</i>
1	132-9183	1	Handle-Lower	12	137-9390	2	Knob-Handle
2	132-9184	1	Handle-Middle	13	117-5976	2	Knob-Handle
3	137-2326	1	Upper Handle ASM	14	92-2260	2	Screw-Handle
5	125-8408	2	Screw-Handle	15	137-9303	1	Guide-Rod, Chute
6	3256-70	4	Washer-Flat	16	3-7501	2	Washer
7	3296-72	2	Nut-Lock, NI	17	75-9040	2	Washer-Square
8	107-3844	4	Washer	18	3229-5	2	Screw-CARR
9	3296-73	8	Nut-Lock, NI	22	114-7988	1	Guide-Cable
10	3256-1	6	Washer-Flat	24	139-5244	1	Handle ASM
11	117-7737	6	Screw-Handle				

# Electrical Assembly



## Electrical Assembly (continued)

<i>Ref.</i>	<i>Part Number</i>	<i>Qty.</i>	<i>Description</i>	<i>Ref.</i>	<i>Part Number</i>	<i>Qty.</i>	<i>Description</i>
1	137-9424	1	Motor-Driver, Snow (60V)	7	117-7737	4	Screw-Handle
4	137-2347	1	Dash Panel ASM W/Decals	8	104-7201	4	Nut-HF
4:2	137-2259	1	Decal-Power Clear	9	32144-85	3	Screw-HWH
4:3	137-2258	1	Decal-Operation	10	94-4496	8	Screw-PPH
4:4	137-2257	1	Decal-Caution	11	137-9439	1	Charger-60V (2A)
5	137-9404	1	Battery Track ASM	12	139-5245	1	Motor ASM
6	137-9447	2	60V Battery, 3P 6.0Ah ●	13	139-5255	1	Key-Bail

● Not illustrated

# Attachments and Accessories

## For 39902 Flex-Force Power System 60V MAX Snowthrower

<b>Product Name</b>	<b>Model/Part</b>
60V Battery Charger 2 AMP .....	88602
60V LI-ION Battery 2.5 AH.....	88625
60V LI-ION Battery 6.0 AH.....	88660
60V LI-ION Battery 7.5 AH.....	88675

**Notes:**



**Count on it.**