



Tree Forks
For Toro[®] Sitework[™] Systems
Model No. 22438—200000001 and Up

Parts Catalog

Ordering Replacement Parts

To order replacement parts, please supply: the part number, the quantity, and the description of each part desired.

Understanding Reference Numbers

Each identified part in an illustration has a reference number. The reference number for a part also appears in the parts list, along with other information about the part.

This catalog uses two special reference number formats, one to indicate parts in a service assembly and another to indicate the quantity of a given part in an illustration.

Service Assembly Reference Numbers

Parts in service assemblies have reference numbers in the form **a:b**. The **a** represents the reference number of the entire service assembly and the **b** represents a sequential number unique to each part within the service assembly.

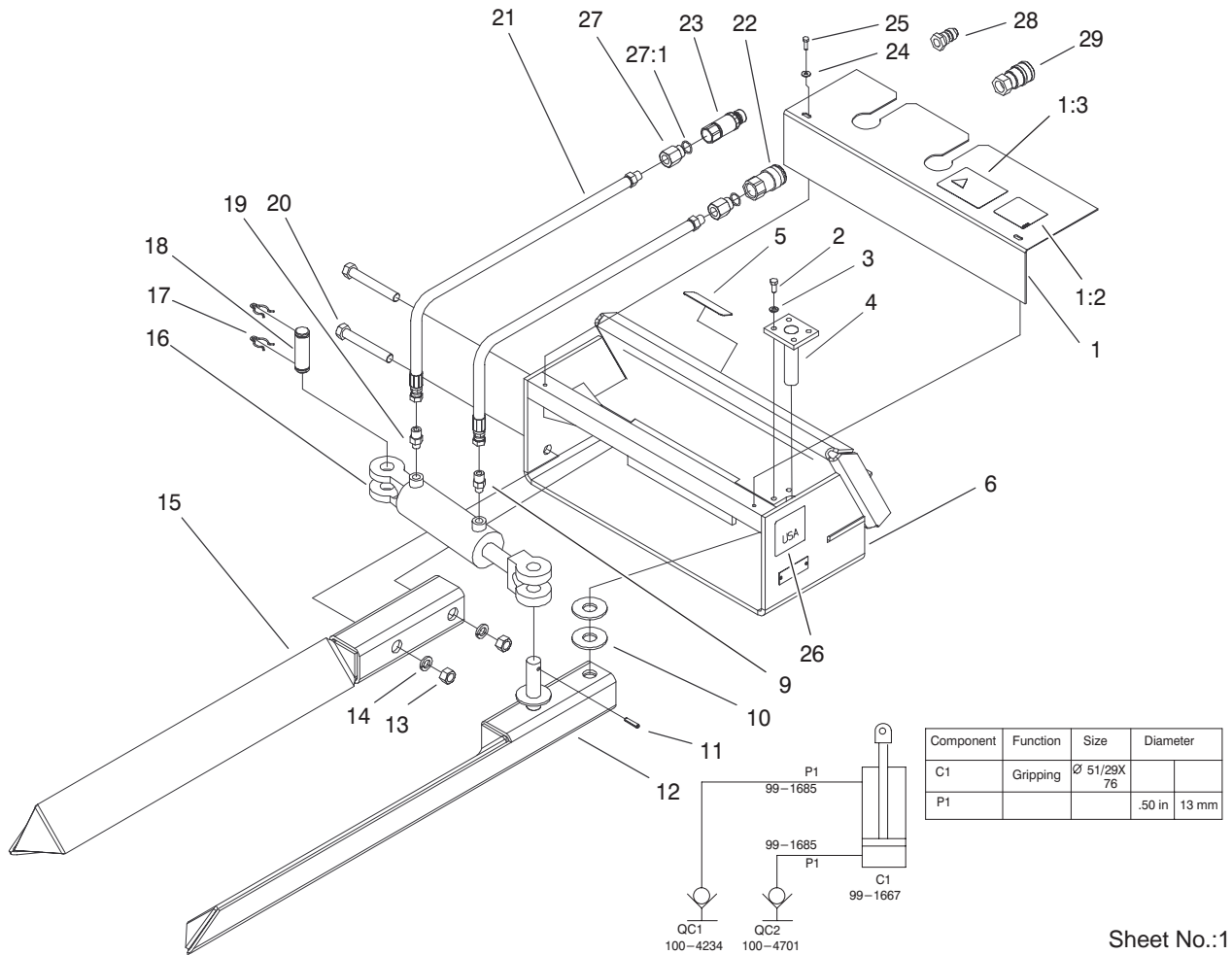
For example, a wheel assembly might be identified by reference number **6**, the tire by **6:1**, the valve by **6:2**, and the wheel by **6:3**. When you order the assembly identified by reference number **6**, you receive all parts identified by reference numbers **6:1**, **6:2**, and **6:3**. However, you may also order any part individually.

Reference numbers of this type appear in illustrations and in part lists.

Reference Numbers Indicating Quantity

In an illustration, if a reference number indicates more than one part, the reference number has the form **nX y**. The **n** represents the quantity of the part, the **X** is the multiplication symbol, and the **y** represents the reference number.

For example, in an illustration, the reference number **2X 37** means that two of the parts identified by reference number **37** are indicated.



Tree Forks Assembly

| Ref. No. | Part No. | Qty. | Description |
|----------|----------|------|----------------------------|
| 1 | 99-1669 | 1 | Shield Asm |
| 1:2 | 100-4650 | 1 | Decal-Warning |
| 1:3 | 100-4690 | 1 | Decal-Load Rating |
| 2 | 3274-10 | 4 | Screw-HSH |
| 3 | 3253-4 | 4 | Washer |
| 4 | 99-1672 | 1 | Pin |
| 5 | 98-4683 | 1 | Decal-Attachment, Dingo |
| 6 | 99-1680 | 1 | Frame |
| 9 | 99-1686 | 1 | Connector - Straight |
| 10 | 3256-10 | 2 | Washer-Flat |
| 11 | 32121-9 | 1 | Pin-Spring |
| 12 | 99-1683 | 1 | Arm-Pivot, LH |
| 13 | 3219-6 | 2 | Nut-Hex |
| 14 | 3253-8 | 2 | Washer-Lock/Sp |
| 15 | 99-1682 | 1 | Arm-Pivot, RH |
| 16 | 99-1667 | 1 | Cylinder - Tree Fork |
| 16:1 | 100-4695 | 1 | Kit-Seal |
| 17 | 99-1689 | 2 | Clip - Pin |
| 18 | 99-1688 | 1 | Pin - Cylinder Pivot |
| 19 | 99-1687 | 1 | Connector-Straight Orifice |
| 20 | 3214-15 | 2 | Screw-HH |
| 21 | 99-1685 | 2 | Hydraulic Hose ASM |
| 22 | 100-4234 | 1 | Coupler-Face, Flush |
| *22:1 | 100-6119 | 1 | Kit-Seal |

| Ref. No. | Part No. | Qty. | Description |
|----------|----------|------|--------------------------|
| 23 | 100-4701 | 1 | Nipple-Connect, Pressure |
| *23:1 | 100-6120 | 1 | Kit-Seal |
| 24 | 3256-1 | 2 | Washer-Flat |
| 25 | 3274-8 | 2 | Screw-HSH |
| 26 | 98-3269 | 1 | Decal-Made In USA |
| 27 | 100-4618 | 2 | Adapter-Hyd |
| 27:1 | 237-80 | 1 | O-Ring |
| 28 | 100-4702 | 1 | Disconnect-Quick, Male |
| 29 | 100-4703 | 1 | Disconnect-Quick, Female |
| *29:1 | 100-4165 | 1 | Seal |

* Not illustrated