

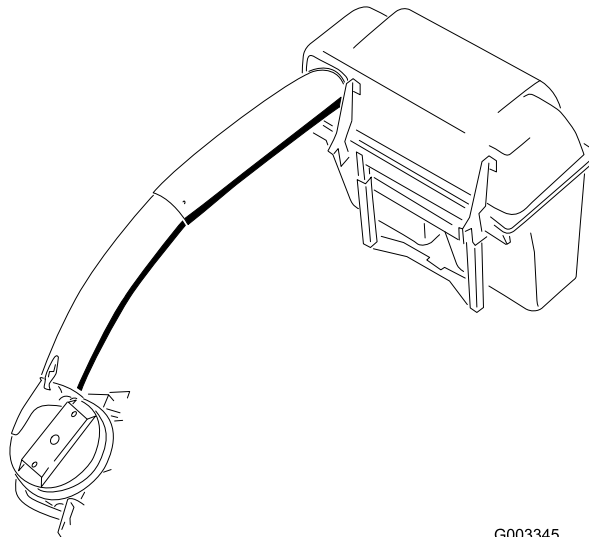


**Count on it.**

**Operator's Manual**

**E-Z Vac™ HD Twin Bagger  
Zero Turn Radius Riding Mower**

Model No. 78431—Serial No. 40000000 and Up



G003345



## ⚠ WARNING

### CALIFORNIA Proposition 65 Warning

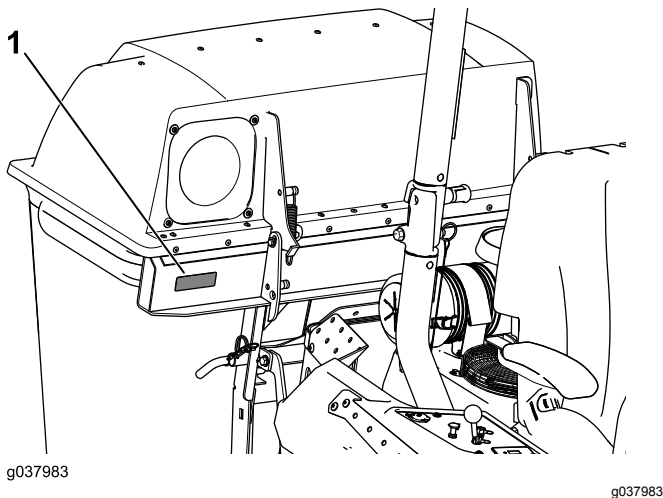
Use of this product may cause exposure to chemicals known to the State of California to cause cancer, birth defects, or other reproductive harm.

# Introduction

Read this information carefully to learn how to operate and maintain your product properly and to avoid injury and product damage. You are responsible for operating the product properly and safely.

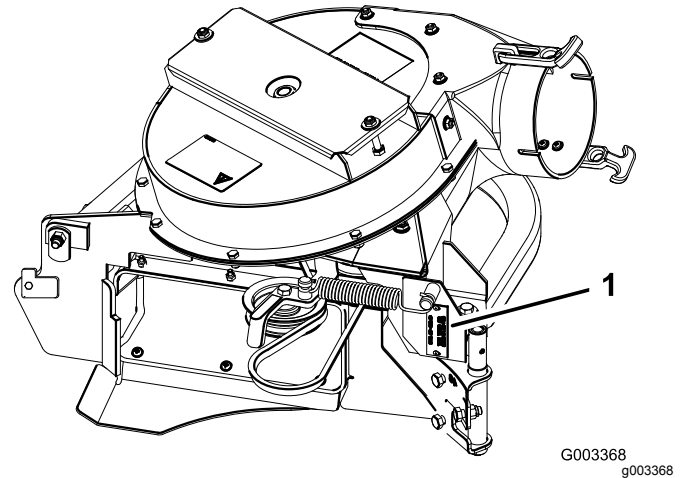
You may contact Toro directly at [www.Toro.com](http://www.Toro.com) for product safety and operation training materials, accessory information, help finding a dealer, or to register your product.

Whenever you need service, genuine Toro parts, or additional information, contact an Authorized Service Dealer or Toro Customer Service and have the model and serial numbers of your product ready. [Figure 1](#) and [Figure 2](#) or [Figure 3](#) or identify the location of the model and serial numbers on the product. Write the numbers in the space provided.



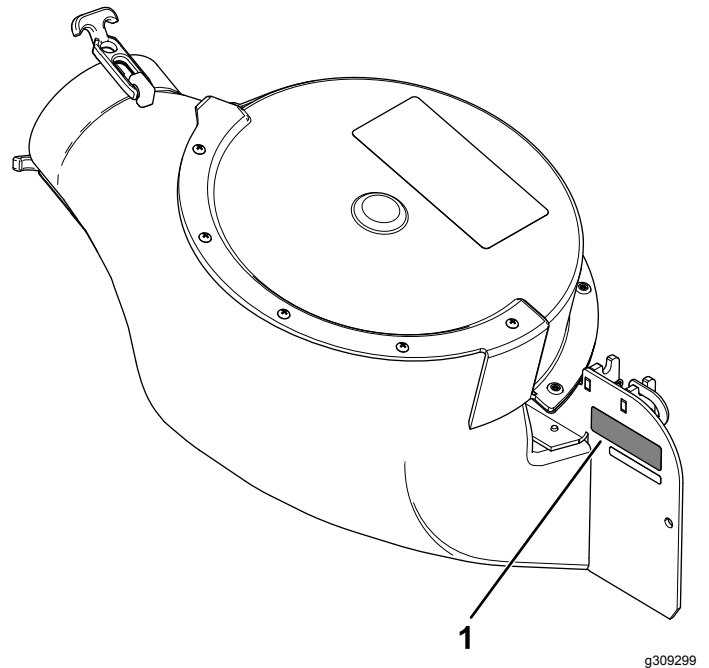
**Figure 1**

1. Bagger model and serial-number location



**Figure 2**

1. Blower model and serial-number location



**Figure 3**

1. Blower model and serial-number location

Model No. _____
Serial No. _____

# Contents

- Safety ..... 4
  - Towing Safety ..... 4
  - Safety and Instructional Decals ..... 5
- Setup ..... 7
  - 1 Preparing the Machine ..... 9
  - 2 Installing the ROPS Pin ..... 9
  - 3 Installing the Weight Kit ..... 10
  - 4 Installing the Bagger Support (If Applicable) ..... 11
  - 5 Installing the Bagger Brackets ..... 12
  - 6 Installing the Transmission Support ..... 13
  - 7 Installing the Cross Brace ..... 13
  - 8 Installing the Bagger Frame ..... 14
  - 9 Installing the Bags ..... 15
  - 10 Installing the Hitch Cover ..... 15
  - 11 Removing the Existing Belt Cover, Bracket, and Discharge Chute ..... 16
  - 12 Installing the Blower-Pulley Assembly and Belt-Cover Bracket ..... 17
  - 13 Installing the Baffle ..... 20
  - 14 Installing the Blower Assembly ..... 21
  - 15 Installing the Blower Belt, Spring, and Blower-Belt Cover ..... 24
  - 16 Installing the Discharge Tubes ..... 26
  - 17 Adjusting the Parking Brake ..... 28
  - 18 Checking the Tire Pressure ..... 28
- Operation ..... 29
  - Emptying the Grass Bags ..... 29
  - Clearing Obstructions from the Bagger System ..... 30
  - Removing the Bagger ..... 30
  - Transporting the Machine ..... 30
  - Operating Tips ..... 31
- Maintenance ..... 32
  - Recommended Maintenance Schedule(s) ..... 32
  - Cleaning the Hood Screen ..... 32
  - Inspecting the Bagger Attachment ..... 33
  - Cleaning the Bagger and Bags ..... 33
  - Inspecting the Blower Belt ..... 33
  - Replacing the Blower Belt ..... 33
  - Greasing the Idler Arm for Blower Models 78433–78438 ..... 34
  - Inspecting the Bagger ..... 35
  - Inspecting the Mower Blades ..... 35
  - Selecting the Mower Blades ..... 35
  - Replacing the Grass Deflector ..... 35
- Storage ..... 36
- Troubleshooting ..... 37

This manual identifies potential hazards and has safety messages identified by the safety-alert symbol (Figure 4), which signals a hazard that may cause serious injury or death if you do not follow the recommended precautions.



**Figure 4**

g000502

1. Safety-alert symbol

This manual uses 2 words to highlight information. **Important** calls attention to special mechanical information and **Note** emphasizes general information worthy of special attention.

# Safety

- Become familiar with the safe operation of the equipment, with the operator controls, and safety signs.
- Use extra care with grass catchers or other attachments. These can change the operating characteristics and the stability of the machine.
- Follow the manufacturer's recommendations for adding or removing wheel weights or counterweights to improve stability.
- Do not use a grass catcher on steep slopes. A heavy grass catcher could cause loss of control or overturn the machine.
- Slow down and use extra care on hillsides. Be sure to travel in the recommended direction on hillsides. Turf conditions can affect the stability of the machine. Use extreme caution while operating near drop-offs.
- Keep all movement on slopes slow and gradual. Do not make sudden changes in speed, direction, or turning.
- The grass catcher can obstruct the view to the rear. Use extra care when operating in reverse.
- Use care when loading or unloading the machine into a trailer or truck.
- Never operate with the discharge deflector raised, removed or altered, unless using a grass catcher.
- Keep hands and feet away from moving parts. Do not make adjustments with the engine running.
- Park the machine on level ground, disengage the drives, and shut off the engine before leaving the operator's position for any reason including emptying the grass catcher or unclogging the chute.
- If you remove the grass catcher, be sure to install any discharge deflector or guard that might have been removed to install the grass catcher. Do not operate the mower without either the entire grass catcher or the grass deflector in place.
- Do not leave grass in the grass catcher for extended periods of time.
- Grass catcher components are subject to wear, damage and deterioration, which could expose you to moving parts or allow objects to be thrown. Frequently check components and replace with the manufacturer's recommended parts, when necessary.

# Towing Safety

- Do not attach towed equipment except at the hitch point.
- Follow the attachment manufacturer's recommendation for weight limits for towed equipment and towing on slopes.
- Never allow children or others in or on towed equipment.
- On slopes, the weight of the towed equipment may cause loss of traction and loss of control. Reduce towed weight and slow down.
- Stopping distance increases with the weight of the towed load. Travel slowly and allow extra distance to stop.
- Make wide turns to keep the attachment clear of the machine.
- Do not tow a load that weighs more than the towing machine.

# Safety and Instructional Decals



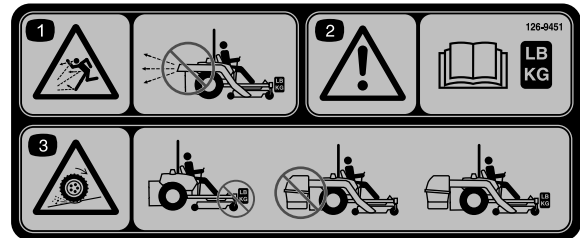
Safety decals and instructions are easily visible to the operator and are located near any area of potential danger. Replace any decal that is damaged or missing.

**⚠ WARNING: Cancer and Reproductive Harm - [www.P65Warnings.ca.gov](http://www.P65Warnings.ca.gov).**  
For more information, please visit [www.ttcocaprop65.com](http://www.ttcocaprop65.com)

133-8061

133-8061

decal133-8061

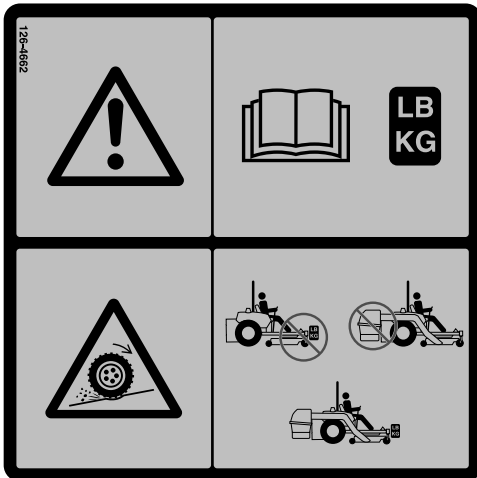


126-9451

126-9451

decal126-9451

1. Thrown objects hazard—Do not run the blower without the entire collection system installed and latched.
2. Warning—Read the *Operator's manual* about counterbalance weight installation.
3. Loss of traction and steering or reduced stability hazard—Ez Vac counterbalance weight(s) installed without the Ez Vac may cause loss of traction and steering control. The Ez Vac installed without the Ez Vac counterbalance weight(s) can cause reduced stability. Install weight(s) only when the Ez Vac is installed.



126-4662

126-4662

decal126-4662

1. Warning—read the *Operator's Manual* for the correct quantity of counterbalance weight(s).
2. Loss of traction and steering or reduced stability hazard—Ez Vac counterbalance weight(s) installed without the Ez Vac may cause loss of traction and steering control. The Ez Vac installed without the Ez Vac counterbalance weight(s) can cause reduced stability. Install weight(s) only when the Ez Vac is installed.

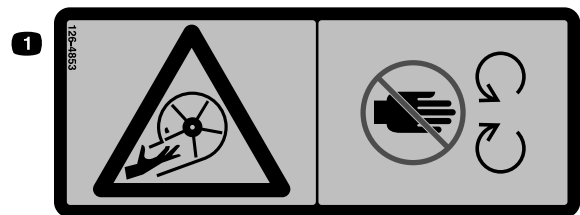


126-4659

126-4659

decal126-4659

1. Warning—hot pulley; allow to cool.

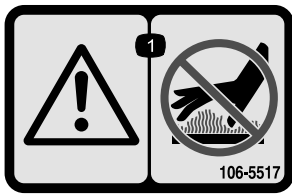


126-4853

126-4853

decal126-4853

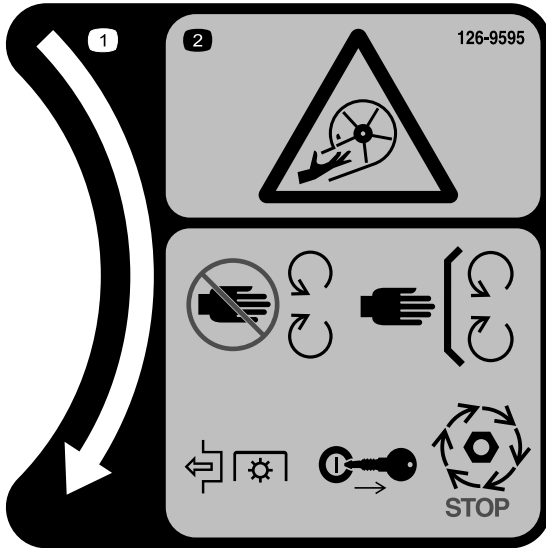
1. Impeller/Rotating blades hazard—keep hands away from moving parts. Keep all safety devices in place and working. Do not reach into the blower unless the rotation indicator has stopped.



decal106-5517

**106-5517**

1. Warning—do not touch the hot surface.



decal126-9595

**126-9595**

1. Rotation indicator
2. Impeller/Rotating Blades hazard-Keep hands away from moving parts. Keep all safety devices in place and working. Do not reach into the blower unless the rotation indicator has stopped. Disengage the PTO, shut off the engine, remove the key, and wait for all moving parts to stop.

# Setup

## Loose Parts

Use the chart below to verify that all parts have been shipped.

Procedure	Description	Qty.	Use
<b>1</b>	No parts required	–	Prepare the machine.
<b>2</b>	ROPS-pin assembly Bolt (#10 x 3/4 inch) Washer (#10)	2 2 2	Install the ROPS pin.
<b>3</b>	Weight Channel plate Plate Tabbed plate Bolt (3/8 x 2-1/2 inches) Nut (3/8 inch) Flat weight	2 2 2 2 4 4 2	Install the weights.
<b>4</b>	Left bagger support Right bagger support Left support bracket Right support bracket Bolt (5/16 x 3 inches) Bolt (3/8 x 1 inch) Flange nut (5/16 inch) Flange nut (3/8 inch) Washer	1 1 1 1 4 2 4 2 6	Install the bagger support.
<b>5</b>	Bagger bracket Bolt (3/8 x 1 inch) Washer Flange nut (3/8 inch)	2 4 4 4	Install the bagger brackets.
<b>6</b>	Transmission support	1	Install the transmission support.
<b>7</b>	Cross brace Bolt (5/16 x 1-1/4 inches) Flange nut (5/16 inch) Washer (3/8 inch)	1 2 2 2	Install the cross brace.
<b>8</b>	Bag support Lock-pin assembly	1 2	Install the frame.
<b>9</b>	Bags	2	Install the bags.
<b>10</b>	Hitch cover	1	Install the hitch cover.
<b>11</b>	No parts required	–	Remove the existing belt cover, bracket, and discharge chute.

Procedure	Description	Qty.	Use
<b>12</b>	Blower-pulley assembly	1	Install the blower-pulley assembly.
	Belt-cover bracket	1	
	Speed nut	1	
	Carriage bolt (1/4 x 3/4 inch)	2	
	Locknut (1/4 inch)	2	
	Locknut (3/8 inch)	3	
	Blower pulley	1	
	Locknut (3/4 inch)	1	
	Washer	1	
	Pulley mount	1	
<b>13</b>	Baffle	1	Install the baffle.
	Carriage bolt (5/16 x 7/8 inch)	1	
	Flange nut (5/16 inch)	1	
	Carriage bolt (3/8 x 7/8 inch)	2	
	Flange nut (3/8 inch)	2	
<b>14</b>	Blower assembly	1	Install the blower assembly.
	Pivot pin	1	
	Roll pin (3/16 x 7/8 inch)	1	
<b>15</b>	Blower-belt cover	1	Install the bagger belt, spring, and blower-belt cover.
	Cover knob	1	
<b>16</b>	Upper tube	1	Install the discharge tubes.
	Lower tube	1	
	Bolt (#10 x 3/4 inch)	3	
	Locknut (#10)	3	
	Washer (7/32 inch)	3	
<b>17</b>	No parts required	–	Adjust the parking brake.
<b>18</b>	No parts required	–	Check the tire pressure.

**Note:** Determine the left and right sides of the machine from the normal operating position.



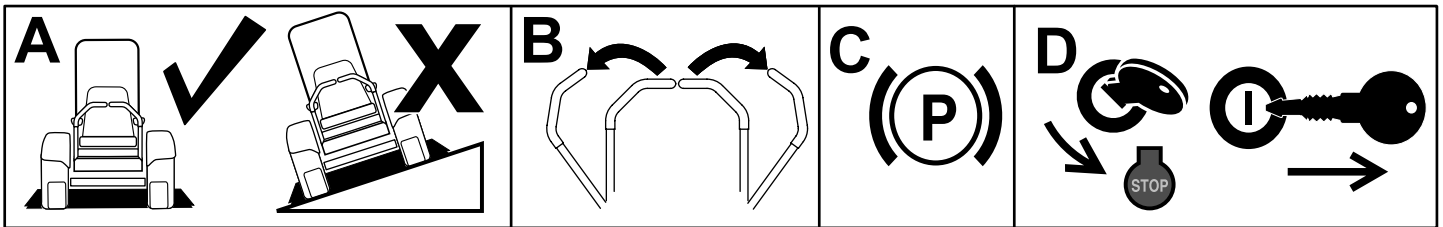
# 1

## Preparing the Machine

No Parts Required

### Procedure

1. Park the machine on a level surface.
2. Move the motion-control levers to the NEUTRAL-LOCK position.
3. Engage the parking brake.
4. Shut off the engine and remove the key.



g037289  
g037289

Figure 5

# 2

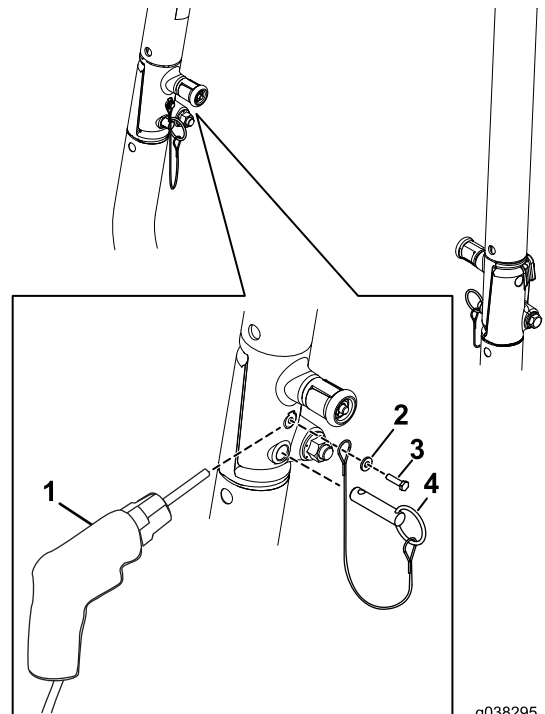
## Installing the ROPS Pin

Parts needed for this procedure:

2	ROPS-pin assembly
2	Bolt (#10 x 3/4 inch)
2	Washer (#10)

### Procedure

1. Use a #18 (0.170 inch diameter) drill bit and drill out the lanyard hole in the ROPS (Figure 6).



g038295

g038295

Figure 6

1. Drill with a #18 (0.170 inch diameter) drill bit
2. Washer (#10)
3. Self-tapping screw (#10 x 3/4 inch)
4. ROPS pin

2. Use the self-tapping screw (#10 x 3/4 inch) and washer to secure the ROPS-pin assembly to each side of the ROPS assembly (Figure 6).
3. Insert the ROPS pin into the hole in the ROPS (Figure 6).

# 3

## Installing the Weight Kit

### Parts needed for this procedure:

2	Weight
2	Channel plate
2	Plate
2	Tabbed plate
4	Bolt (3/8 x 2-1/2 inches)
4	Nut (3/8 inch)
2	Flat weight

### Procedure

1. Use the bolts (3/8 x 2-1/2 inches), nuts to secure the plates to the weight (Figure 7).

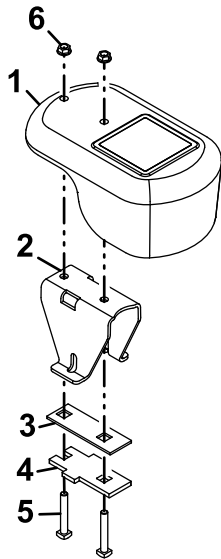


Figure 7

g185955

1. Weight
2. Channel plate
3. Plate
4. Tabbed plate
5. Bolt (3/8 x 2 -1/2 inches)
6. Nut (3/8 inch)

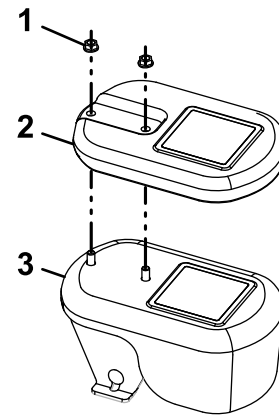


Figure 8

G037628

g037628

1. Nut (3/8 inch)
2. Flat weight
3. Weight assembly

3. Use the knob, washer, and carriage bolt (3/8 x 3-1/2 inch) to secure a caster weight to each caster arm (Figure 9).

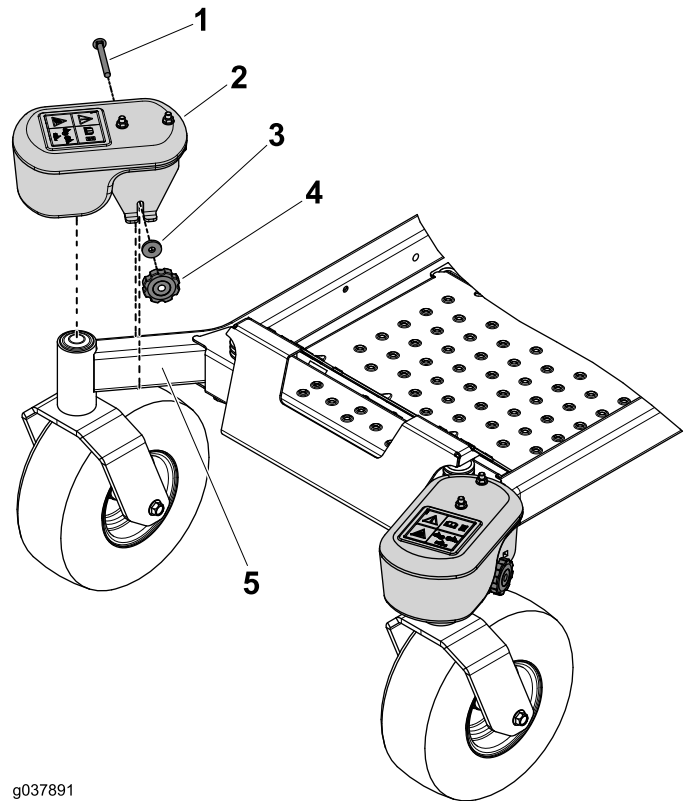


Figure 9

g037891

g037891

1. Carriage bolt (3/8 x 3-1/2 inch)
2. Weight
3. Washer
4. Knob
5. Caster arm

2. Add the flat weight to the weight assembly for a machine with a 122 cm (48 inches) mower deck (Figure 8).

# 4

## Installing the Bagger Support (If Applicable)

### Parts needed for this procedure:

1	Left bagger support
1	Right bagger support
1	Left support bracket
1	Right support bracket
4	Bolt (5/16 x 3 inches)
2	Bolt (3/8 x 1 inch)
4	Flange nut (5/16 inch)
2	Flange nut (3/8 inch)
6	Washer

### Procedure

1. Remove the bolts and nuts that secure the upper trim to the machine (Figure 10).

**Note:** Do not perform this step on a 1500 Series machine.

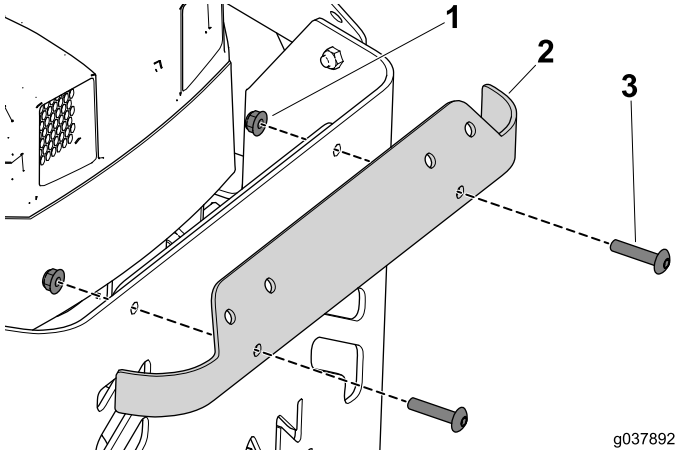


Figure 10

g037892  
g037892

1. Flange nut
2. Upper trim
3. Bolt

2. Remove the bolts and nuts that secure the left side of the rear guard to the frame (Figure 11).

**Note:** Perform the following steps on 1 side of the machine, then the other.

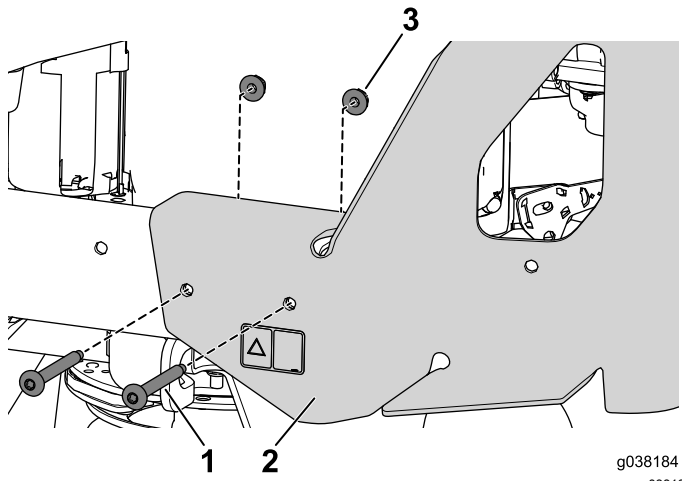


Figure 11

g038184  
g038184

1. Bolt securing the of the rear guard
2. Rear guard
3. Flange nut securing the rear guard

3. Align the holes in the support bracket to the holes in the frame (Figure 12).

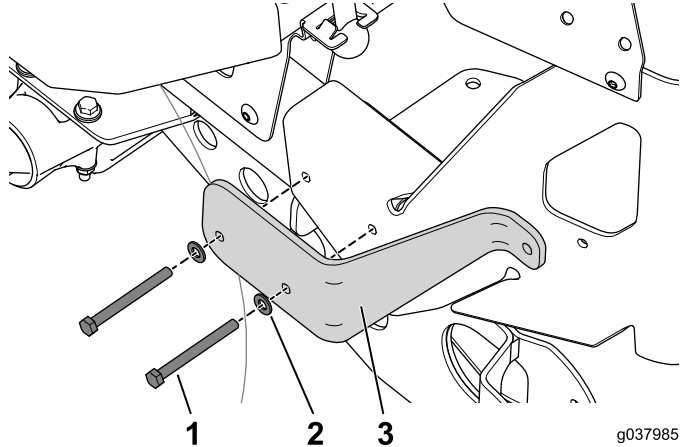


Figure 12

g037985  
g037985

1. Bolt (5/16 x 3-1/4 inches)
2. Washer
3. Support bracket

4. Insert the 2 bolts (5/16 x 3-1/4 inches) with washers into the holes(Figure 12).

**Note:** Do not install the flange nuts at this time.

5. Loosely install the bolt (1 inch), washer, and flange nut that secures the bagger mount to the transmission mount (Figure 13).

# 5

## Installing the Bagger Brackets

### Parts needed for this procedure:

2	Bagger bracket
4	Bolt (3/8 x 1 inch)
4	Washer
4	Flange nut (3/8 inch)

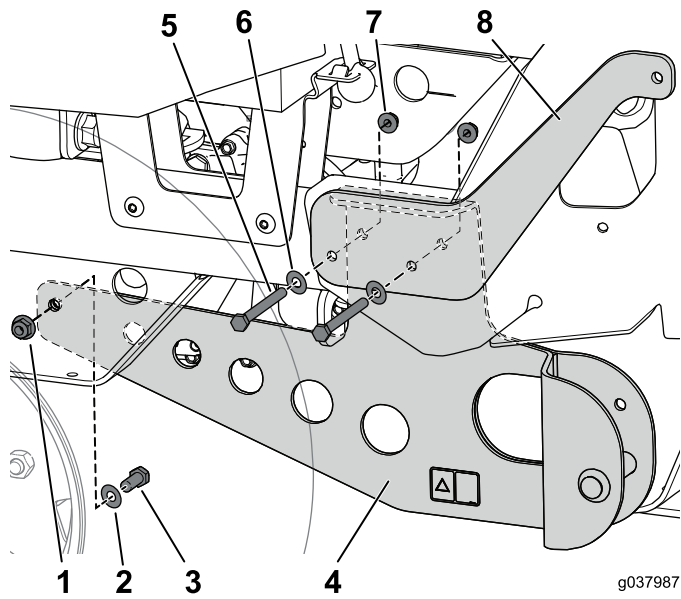


Figure 13

g037987  
g037987

1. Flange nut (3/8 inch)
2. Washer
3. Bolt (3/8 x 1 inch)
4. Bagger mount
5. Bolt (5/16 x 3-1/4 inches)
6. Washer
7. Flange nut (5/16 inch)
8. Support bracket

6. Align the holes in the bagger mount to the 2 bolts that you inserted earlier and secure it with the 2 flange nuts (Figure 13).
7. Tighten all the hardware that you installed.
8. Perform previous steps on the other side of the machine.

### Procedure

1. Use the 2 bolts (3/8 x 1 inch), 2 washers, and 2 nuts to secure the bagger bracket to the machine (Figure 14).

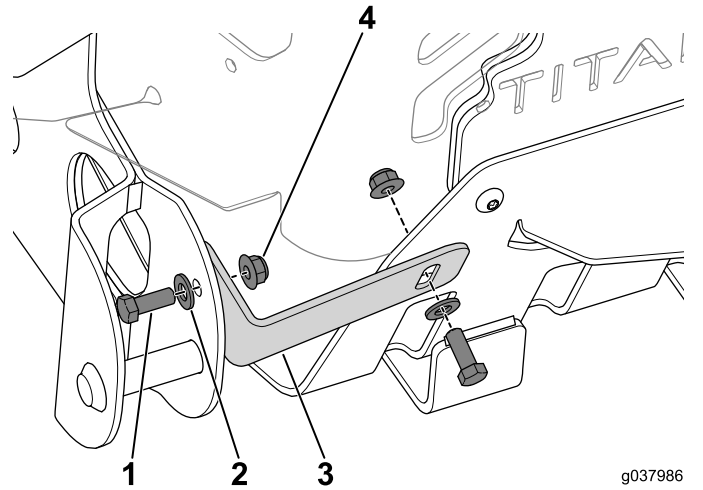


Figure 14

g037986  
g037986

1. Bolt (3/8 x 1 inch)
2. Washer
3. Bagger bracket
4. Flange nut (3/8 inch)

2. Perform previous steps on the other side of the machine.

# 6

## Installing the Transmission Support

### Parts needed for this procedure:

1	Transmission support
---	----------------------

### Procedure

1. Remove the 2 flange nuts from the support bolts on the left and right transmissions and set them aside (Figure 15).

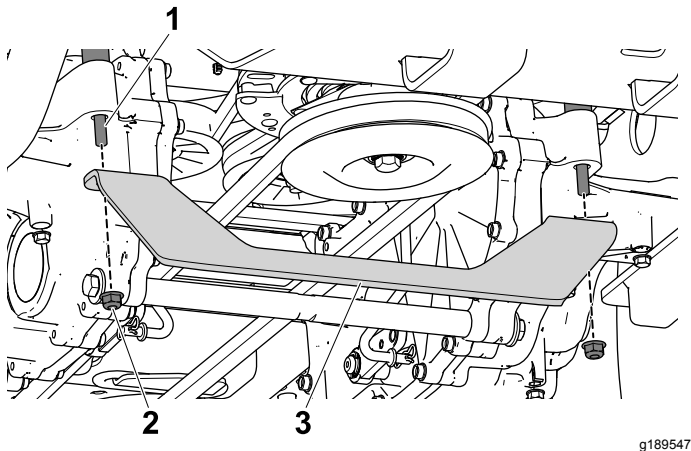


Figure 15

- |                 |                         |
|-----------------|-------------------------|
| 1. Support bolt | 3. Transmission support |
| 2. Flange nut   |                         |

2. Align the bracket to the support bolts and secure them with the 2 flange nuts you removed in the previous step (Figure 15).

# 7

## Installing the Cross Brace

### Parts needed for this procedure:

1	Cross brace
2	Bolt (5/16 x 1-1/4 inches)
2	Flange nut (5/16 inch)
2	Washer (3/8 inch)

### Procedure

1. Loosely install the 2 bolts (3/8 x 1-1/4 inches), washers, and flange nuts to hold the cross brace on the support bracket (Figure 16).

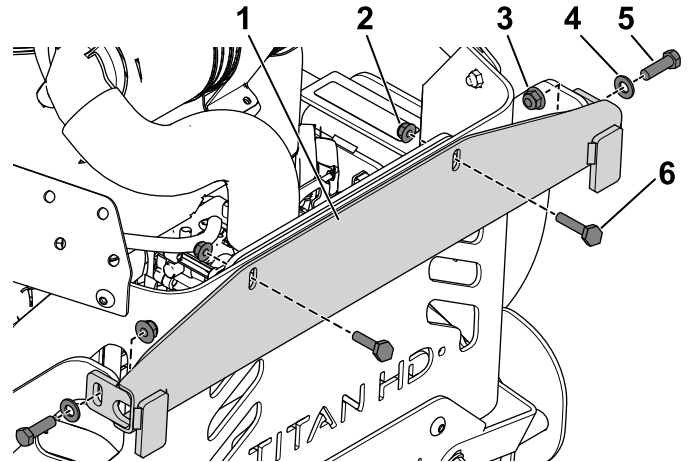


Figure 16

- |                           |                               |
|---------------------------|-------------------------------|
| 1. Cross brace            | 4. Washer (3/8 inch)          |
| 2. Flange nut (5/16 inch) | 5. Bolt (3/8 x 1-1/4 inches)  |
| 3. Flange nut (3/8 inch)  | 6. Bolt (5/16 x 1-1/4 inches) |

2. Loosely install the bolt (5/16 x 1-1/4 inches) and flange nut (5/16 inch) to hold the cross brace to the rear guard (Figure 16).

**Note:** Leave the crossbar hardware loose until you align the bagger frame.

# 8

## Installing the Bagger Frame

Parts needed for this procedure:

1	Bag support
2	Lock-pin assembly

### Procedure

1. Arrange the bagger frame around the pivot pins on the support bracket and rotate it forward (Figure 17).

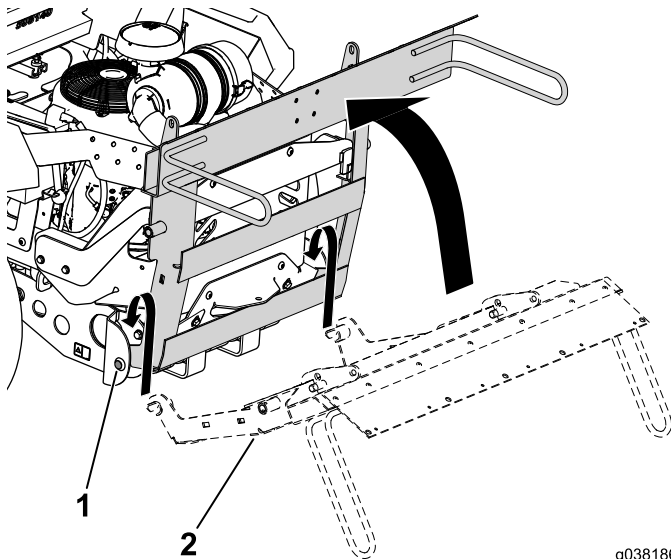


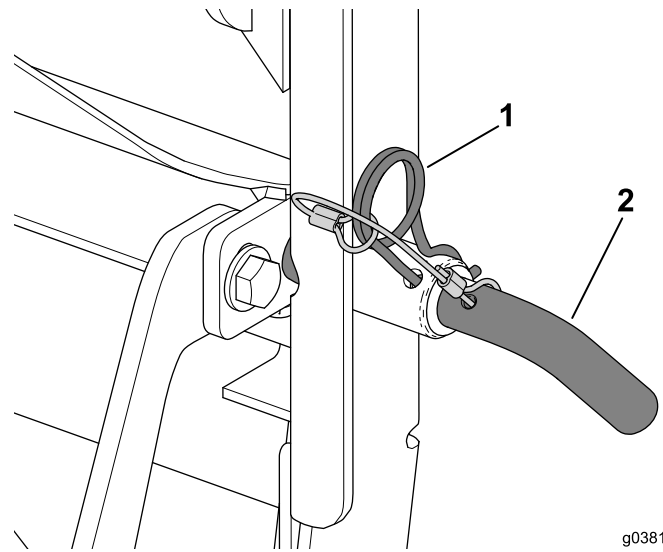
Figure 17

g038186  
g038186

1. Pivot pin
2. Bagger frame

2. Insert the lock pin through the bagger frame and cross brace (Figure 18).

**Note:** You may need to loosen the hardware to align the lock pin to the hole.



g038187  
g038187

Figure 18

1. Hairpin cotter
2. Lock pin

3. Use the hairpin cotter to secure the lock pin (Figure 18).
4. Tighten all loose hardware.

# 9

## Installing the Bags

Parts needed for this procedure:

2	Bags
---	------

### Procedure

1. Hook the bag to the bagger frame (Figure 19).

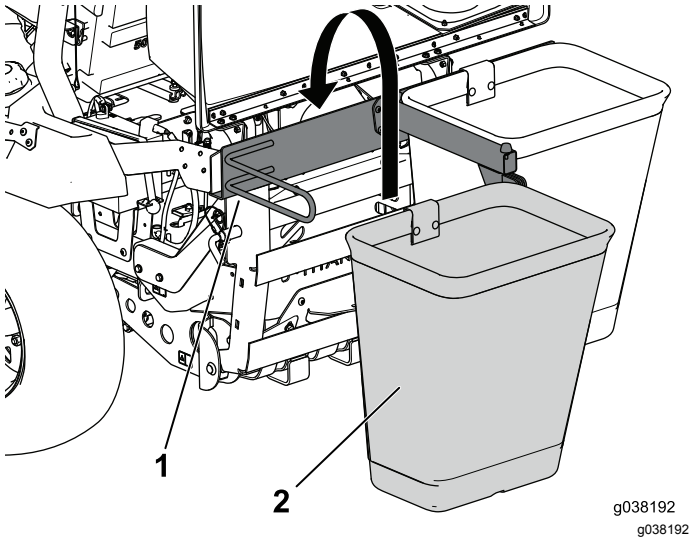


Figure 19

1. Bagger frame
2. Bag

# 10

## Installing the Hitch Cover

Parts needed for this procedure:

1	Hitch cover
---	-------------

### Procedure

1. Apply a lubricant to the nipple on the hitch cover.
2. Align the hitch cover over the hitch and press it into place (Figure 20).

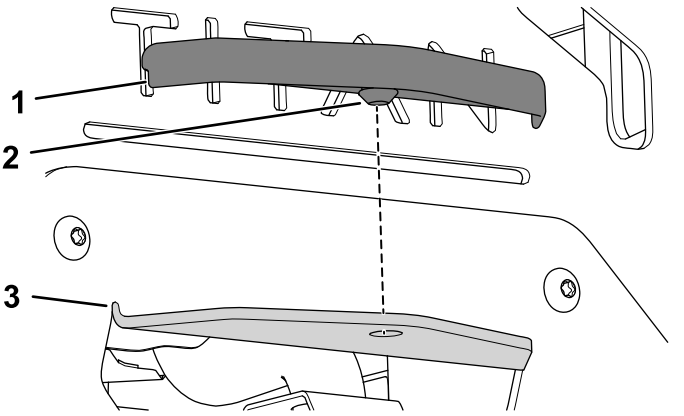


Figure 20

1. Hitch cover
2. Nipple
3. Hitch

2. Close and latch the hood assembly.

# 11

## Removing the Existing Belt Cover, Bracket, and Discharge Chute

No Parts Required

### Procedure

**Note:** Clean the area around the belt cover before removing it.

1. Lower the mower deck to the lowest height-of-cut position.
2. Remove the right belt cover (Figure 21).

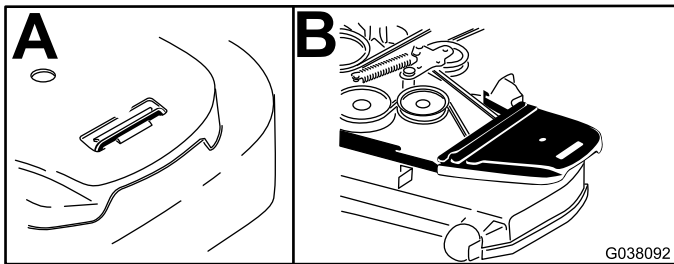


Figure 21

3. Remove the right belt-cover bracket, 2 washers (60-inch mower deck only), and 2 flange nuts from the mower deck (Figure 22).

**Note:** Retain the hardware that you removed during this procedure so that it is available for changeover.

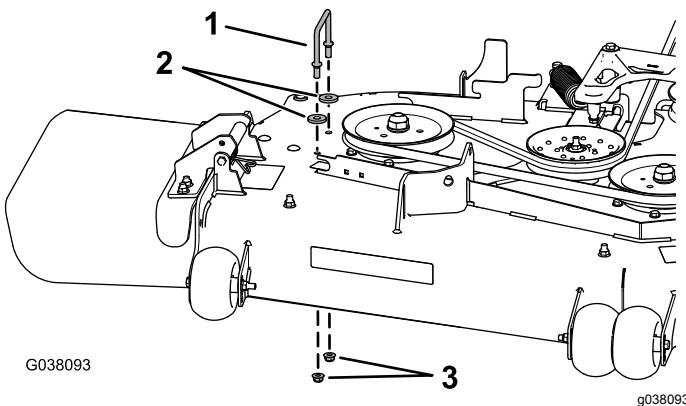


Figure 22

1. Right belt-cover bracket
2. Washers-only on 152 cm (60 inch) mower deck
3. Flange nuts

4. Remove the locknut, bolt, spring, and spacer holding the deflector to the pivot brackets (Figure 23).

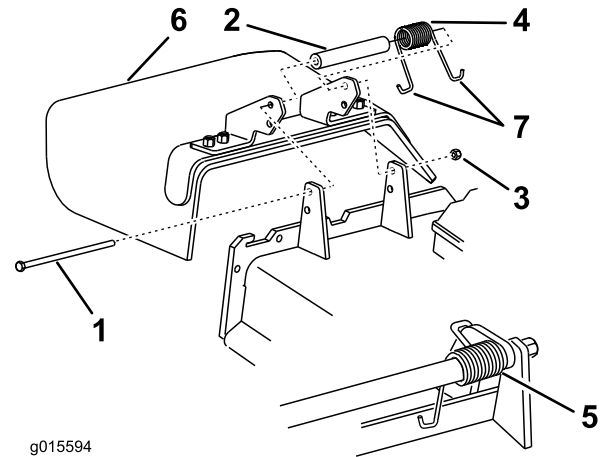


Figure 23

1. Bolt
2. Spacer
3. Locknut
4. Spring
5. Spring installed
6. Grass deflector
7. J-hook end of spring

5. Remove the grass deflector (Figure 23).

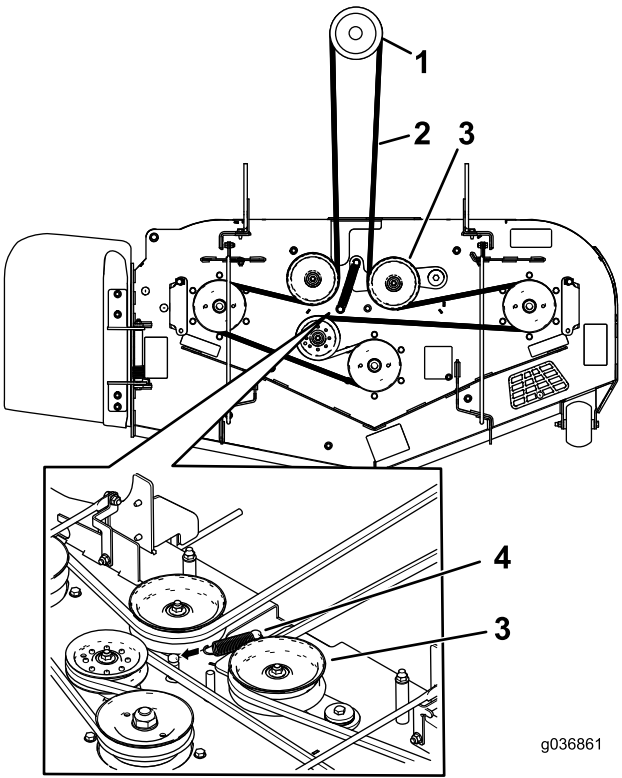


# 12

## Installing the Blower-Pulley Assembly and Belt-Cover Bracket

### Parts needed for this procedure:

1	Blower-pulley assembly
1	Belt-cover bracket
1	Speed nut
2	Carriage bolt (1/4 x 3/4 inch)
2	Locknut (1/4 inch)
3	Locknut (3/8 inch)
1	Blower pulley
1	Locknut (3/4 inch)
1	Washer
1	Pulley mount



g036861

g036861

**Figure 24**

Models 78433, 78434, 78435, 78401, 78402, and 78403

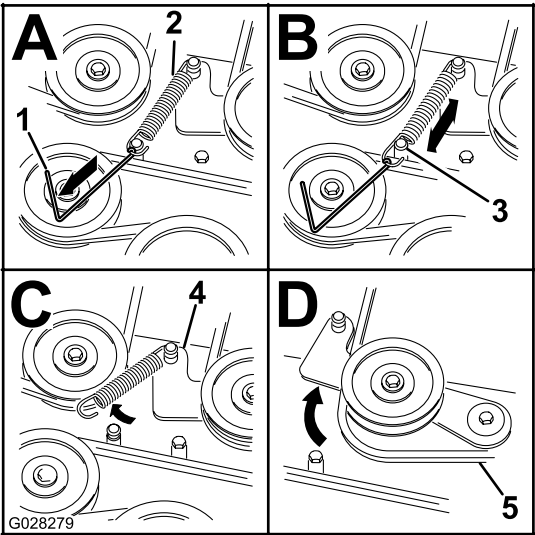
- 1. Clutch pulley
- 2. Mower belt
- 3. Spring-loaded idler pulley
- 4. Spring

### Procedure

1. On the machine, remove the spring tension from the spring-loaded idler pulley; refer to [Figure 24](#) or [Figure 26](#).

**Note:** For 1500 and 2000 Series mower decks, use the spring-removal tool (Toro Part No. 92-5771) to remove the spring from the mower-deck post ([Figure 25](#)).

**Note:** For 2500 Series mower decks, use a ratchet in the square hole in the idler arm to remove tension on the idler spring ([Figure 26](#)).



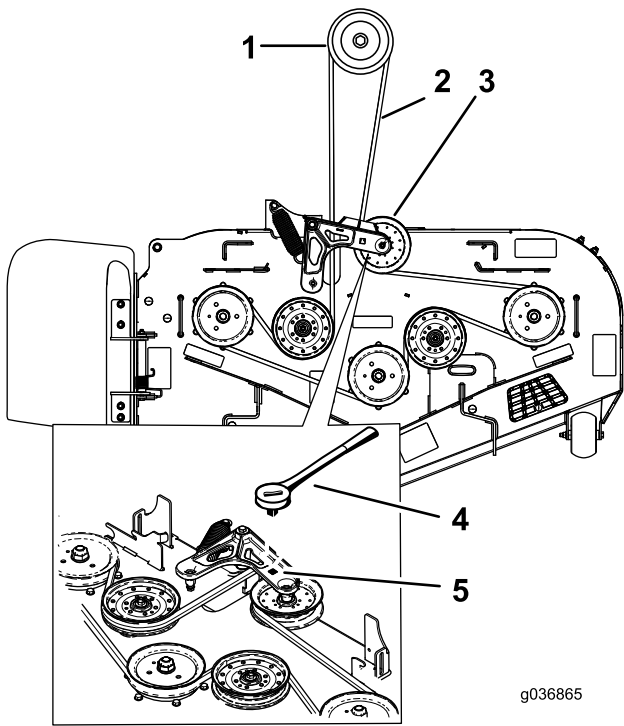
G028279

g028279

**Figure 25**

Models 78433, 78434, 78435, 78401, 78402, and 78403

- 1. Spring-removal tool (Toro Part No. 92-5771)
- 2. Idler spring
- 3. Mower-deck post
- 4. Idler arm
- 5. Mower belt



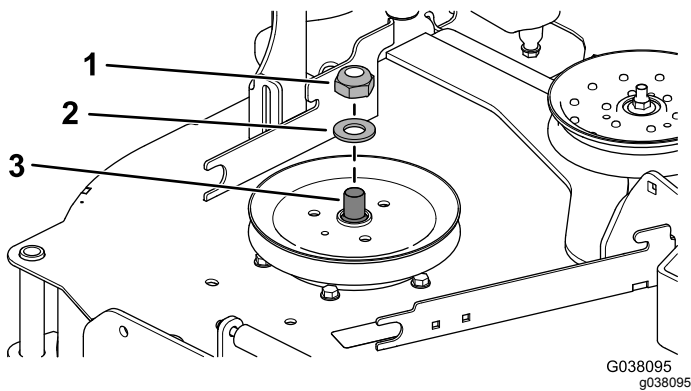
**Figure 26**

Models 78436, 78437, 78438, 78404, 78405, and 78406

- |                               |   |
|-------------------------------|---|
| 1. Clutch pulley              | 4. Ratchet                                      |
| 2. Mower belt                 | 5. Square hole in the idler arm for the ratchet |
| 3. Spring-loaded idler pulley |   |

2. Remove the belt from the right mower-deck pulley.
3. Use a wrench (1-1/2 inches) to hold the spindle shaft, as you remove the locknut (3/4 inch) and washer from the spindle shaft (Figure 27).

**Note:** Set aside the locknut (3/4 inch) and washer for blower 78436, 78437, 78438, 78404, 78405, and 78406.

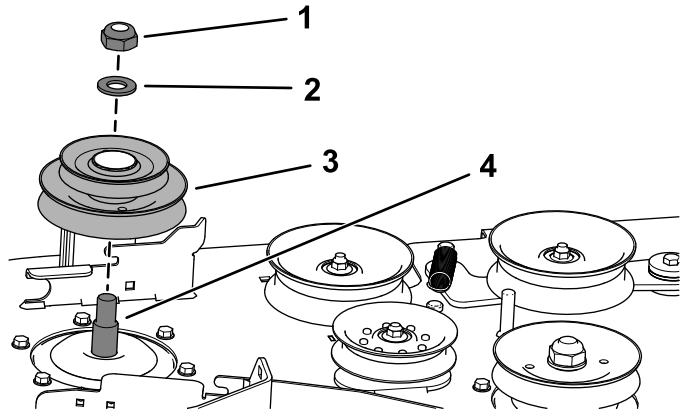


**Figure 27**

- |                       |                        |
|-----------------------|------------------------|
| 1. Locknut (3/4 inch) | 3. Right spindle shaft |
| 2. Washer             |                        |

4. Use a wrench (1-1/2 inches) to hold the spindle shaft, as you install the double pulley onto the right spindle shaft.

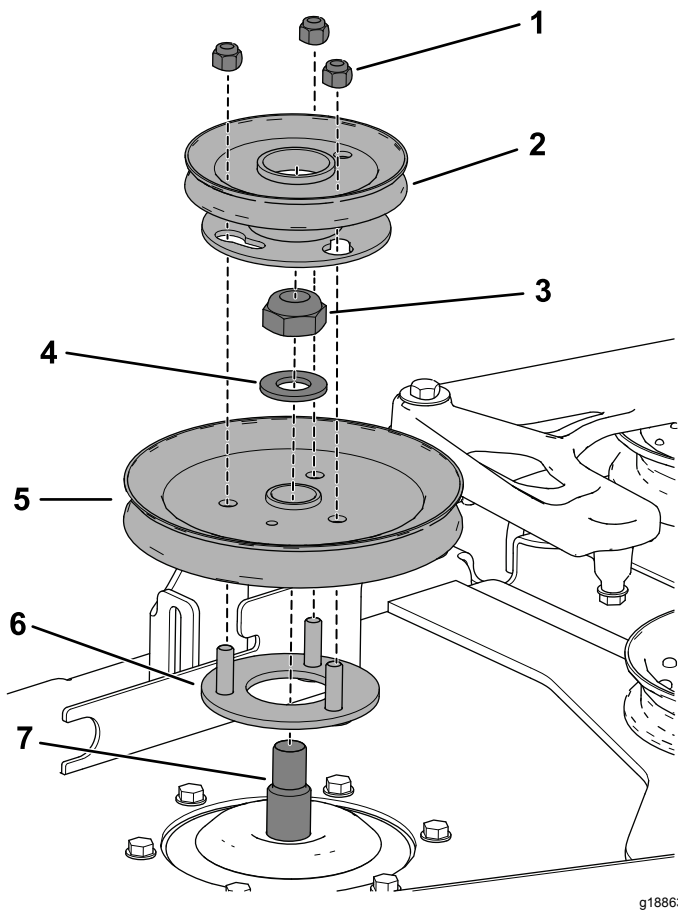
- For **blower Models 78433, 78434, 78435, 78401, 78402, and 78403**, perform the following procedure:
  - A. Use the locknut (3/4 inch) and washer to secure the new double pulley onto the right spindle shaft (Figure 28).
  - B. Torque the locknut (3/4 inch) to 176 to 217 N·m (130 to 160 ft-lb).



**Figure 28**

- |                       |                        |
|-----------------------|------------------------|
| 1. Locknut (3/4 inch) | 3. Double pulley       |
| 2. Washer             | 4. Right spindle shaft |

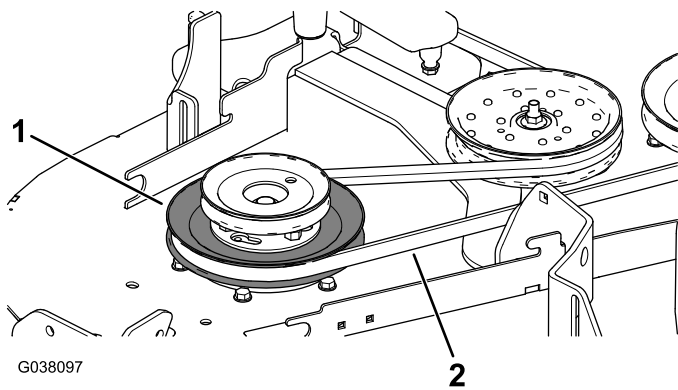
- For **blower Models 78436, 78437, 78438, 78404, 78405, and 78406**, perform the following procedure:
  - A. Insert the threaded studs on pulley mount through the holes in the deck pulley (Figure 29).
  - B. Use the locknut (3/4 inch) and washer that you set aside earlier to secure the deck pulley to the spindle shaft (Figure 29).
  - C. Torque the locknut (3/4 inch) to 176 to 217 N·m (130 to 160 ft-lb).
  - D. Arrange the blower pulley onto the threaded studs and loosely install the locknut (Figure 29).
  - E. Rotate the blower pulley clockwise until it stops.
  - F. Torque the 3 locknuts to 18 N·m (13 ft-lb).



**Figure 29**

- |                       |                         |
|-----------------------|-------------------------|
| 1. Locknut (3/8 inch) | 5. Existing deck pulley |
| 2. Blower pulley      | 6. Pulley mount         |
| 3. Locknut (3/4 inch) | 7. Right spindle shaft  |
| 4. Washer             |                         |

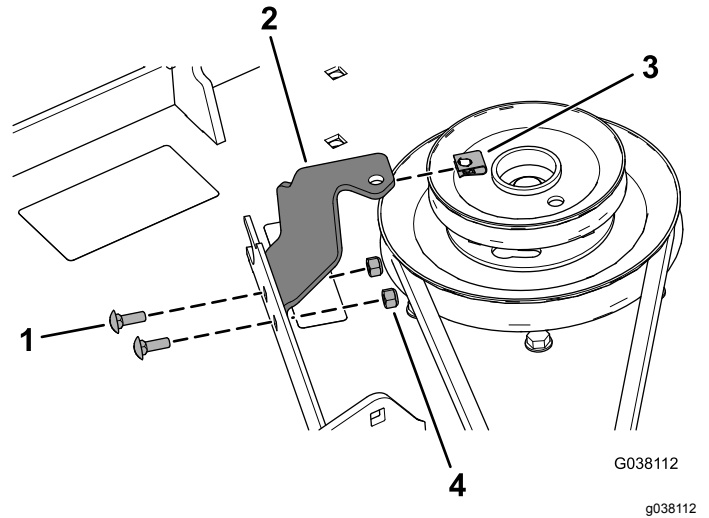
5. Ensure that the blade bolt is torqued to 115 to 149 N·m (85 to 110 ft-lb).
6. Install the mower belt around the lower pulley of the double pulley (Figure 30).



**Figure 30**

- |                 |               |
|-----------------|---------------|
| 1. Lower pulley | 2. Mower belt |
|-----------------|---------------|

7. Install the belt-cover bracket to the mower deck using 2 carriage bolts (1/4 x 3/4 inch) and 2 locknuts (1/4 inch) as shown in Figure 31.
8. Install the speed nut onto the belt-cover bracket (Figure 31).



**Figure 31**

- |                                   |                       |
|-----------------------------------|-----------------------|
| 1. Carriage bolt (1/4 x 3/4 inch) | 3. Speed nut          |
| 2. Belt-cover bracket             | 4. Locknut (1/4 inch) |

9. Install the mower deck belt around the spring-loaded idler pulley (Figure 24 or Figure 26).
10. Use the spring-removal tool (Toro Part No. 92-5771) to attach the spring to the spring-loaded idler pulley.

# 13

## Installing the Baffle

### Parts needed for this procedure:

1	Baffle
1	Carriage bolt (5/16 x 7/8 inch)
1	Flange nut (5/16 inch)
2	Carriage bolt (3/8 x 7/8 inch)
2	Flange nut (3/8 inch)

### Procedure

1. Remove the 2 existing flange nuts (3/8 inch) and 2 carriage bolts (3/8 x 7/8 inch) from the mower deck (Figure 32).

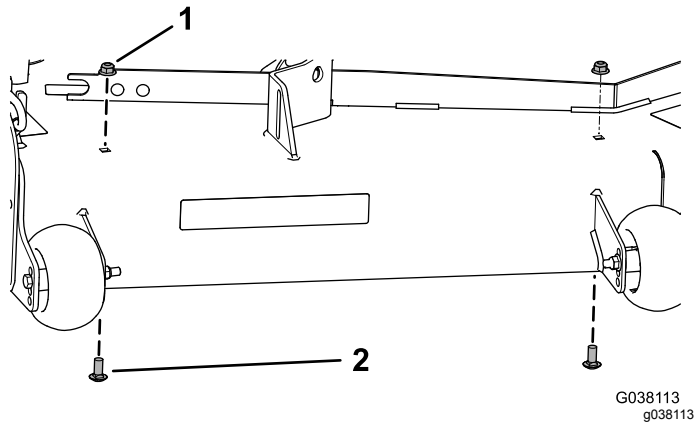


Figure 32

1. Flange nut (3/8 inch)
2. Carriage bolt (3/8 x 7/8 inch)

2. Install the baffle using the carriage bolt (5/16 x 7/8 inch), flange nut (5/16 inch), 2 carriage bolts (3/8 x 7/8 inch), and 2 flange nuts (3/8 inch) as shown in Figure 33.

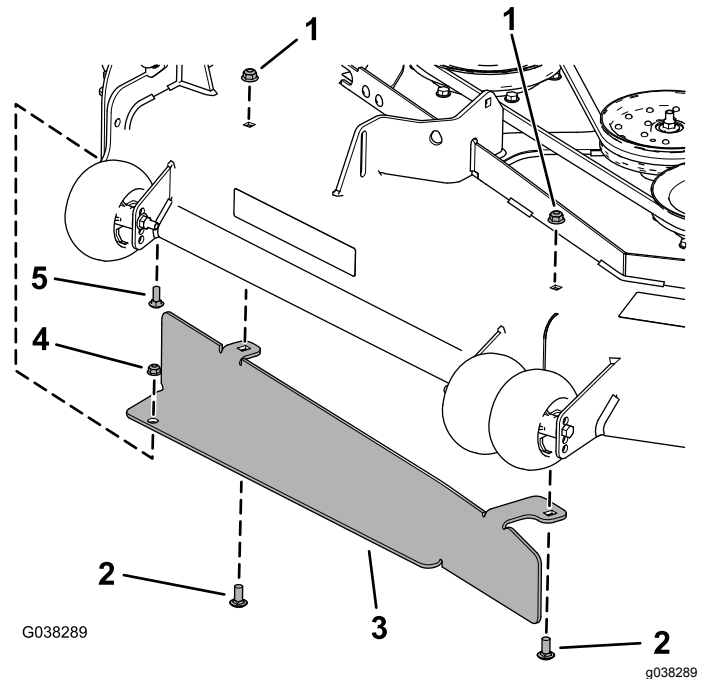


Figure 33

1. Flange nut (3/8 inch)
2. Carriage bolt (3/8 x 7/8 inch)
3. Baffle
4. Flange nut (5/16 inch)
5. Carriage bolt (5/16 x 7/8 inch)

# 14

## Installing the Blower Assembly

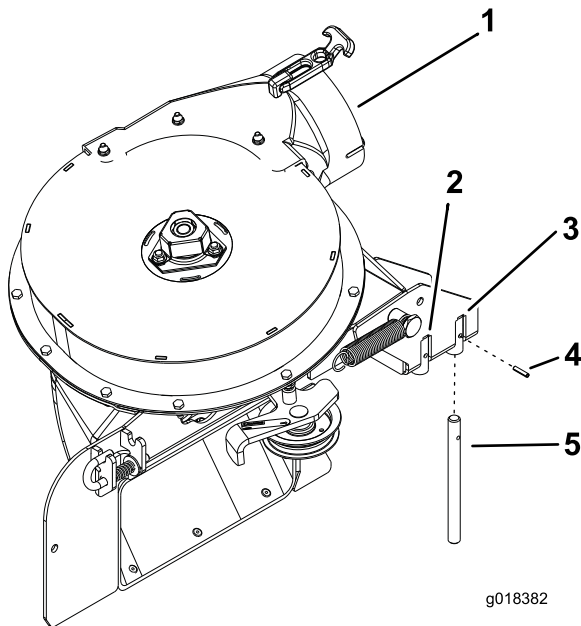
Parts needed for this procedure:

1	Blower assembly
1	Pivot pin
1	Roll pin (3/16 x 7/8 inch)

### Blower Models 78433–78438

Verify that the pivot pin is secured on the blower assembly in the correct location (Figure 34).

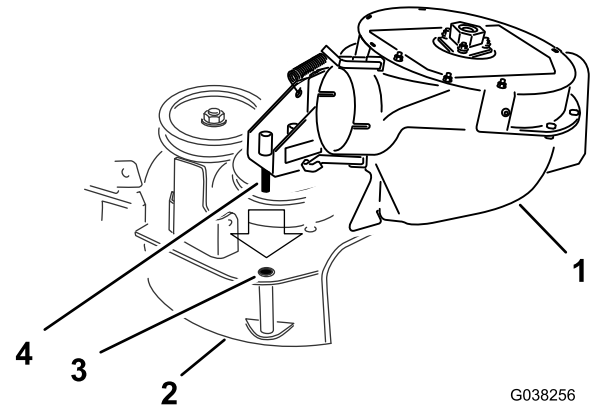
- If you have a 48-inch or 52-inch mower deck, install the pivot pin in the front hole (Figure 34).
- If you have a 60-inch mower deck, install the pivot pin in the rear hole (Figure 34).



**Figure 34**

Blower for 60-inch mower deck shown

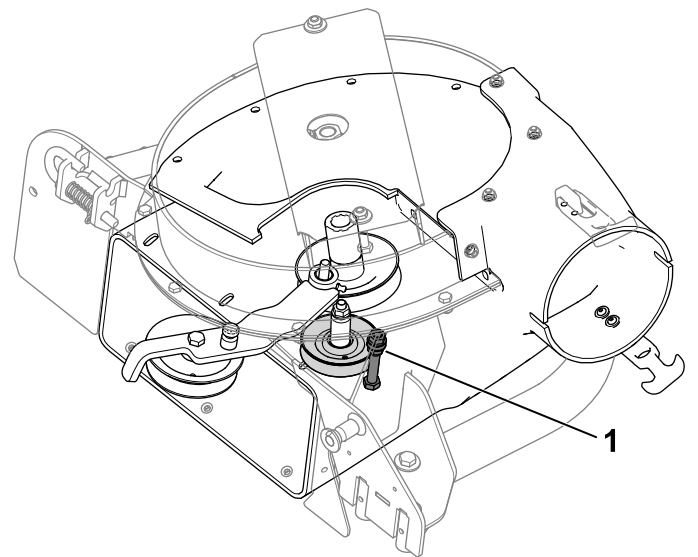
1. Blower assembly
2. Front hole (48-inch and 52-inch mower deck)
3. Rear hole (60-inch mower deck)
4. Roll pin (3/16 x 7/8 inch)
5. Pivot pin



**Figure 35**

1. Blower assembly
2. Deck
3. Pivot hole
4. Blower-pivot pin

2. Loosen or remove the guide pin (Figure 36).



**Figure 36**

1. Guide pin

1. Align the pivot pin on the blower with the pivot-pin hole in the mower deck (Figure 35).

3. Install the belt around the pulleys inside the blower (Figure 37).

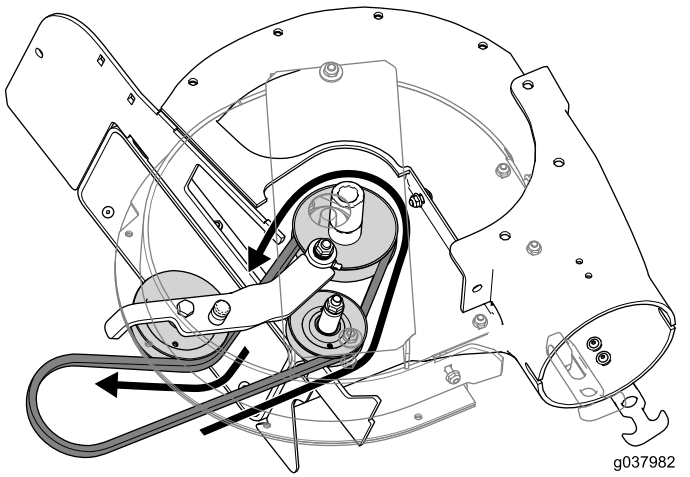


Figure 37

4. Tighten or install the guide pin (Figure 37).
5. Lower the blower and slide the pivot pin into the pivot hole (Figure 35).

**Note:** Ensure that the belt remains positioned in the blower pulley.

6. Move the latch pin from the locking position to the open position (Figure 38).

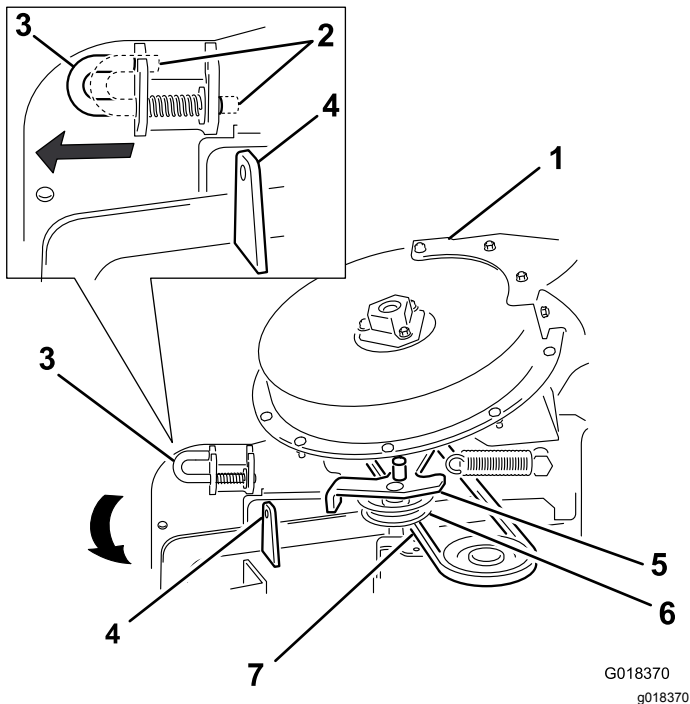


Figure 38

- |                                 |                                    |
|---------------------------------|------------------------------------|
| 1. Blower assembly              | 5. Idler-pivot bracket             |
| 2. Latch pin (locking position) | 6. Idler pulley                    |
| 3. Latch pin (open position)    | 7. Belt (beneath the idler pulley) |
| 4. Chute bracket                |                                    |

7. Close the blower assembly and align the latch pin with the hole in the chute bracket (Figure 38).
8. Move the latch pin to the locking position.

**Note:** Ensure that the latch pin extends through the hole in the chute bracket.

**Note:** Ensure that the latch firmly holds the blower assembly against the mower deck, but you can release it by hand.

## Blower Models 78401–78406

Verify that the pivot pin is secured on the blower assembly in the correct location (Figure 39).

- If you have a 48-inch or 52-inch mower deck, install the pivot pin in the front hole (Figure 39).
- If you have a 60-inch mower deck, install the pivot pin in the rear hole (Figure 39).

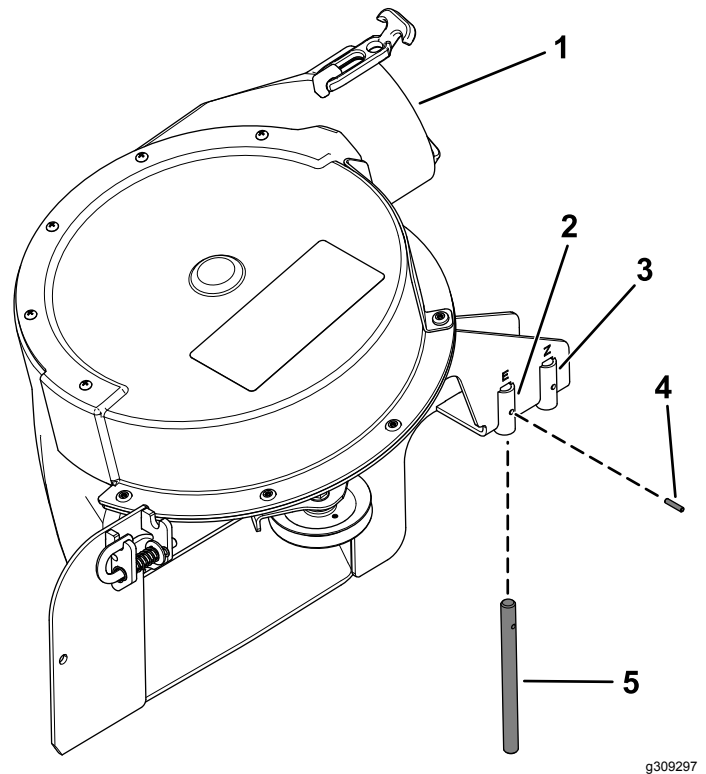
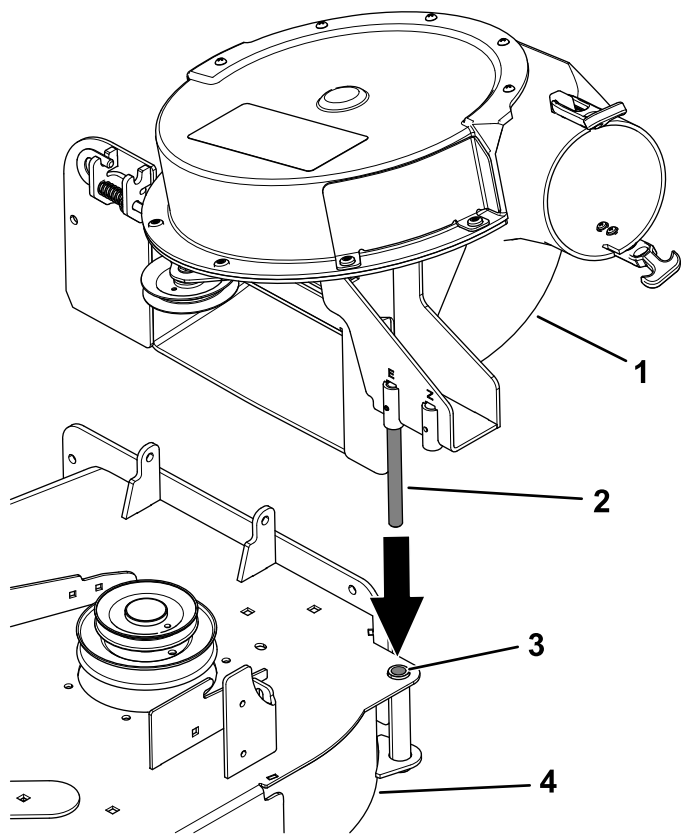


Figure 39

Blower for 48-inch and 52-inch mower deck shown

- |  |              |
|--|--------------|
| 1. Blower assembly                             | 4. Pivot pin |
| 2. Front hole (48-inch and 52-inch mower deck) | 5. Roll pin  |
| 3. Rear hole (60-inch mower deck)              |              |

1. Align the pivot pin on the blower with the pivot-pin hole in the mower deck (Figure 40).

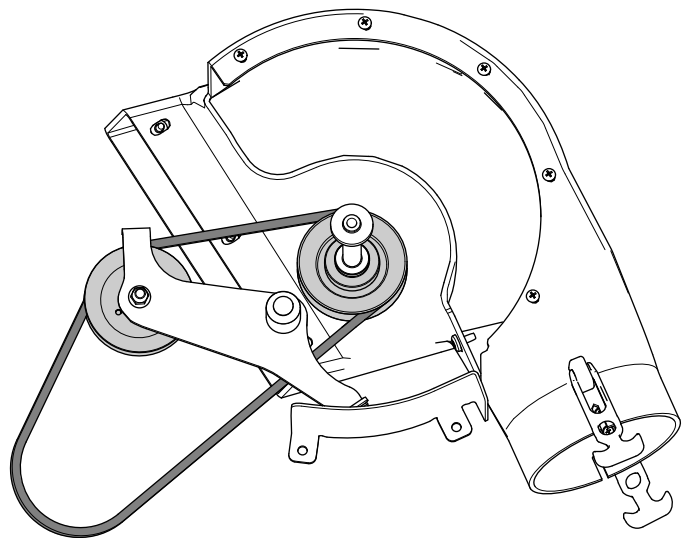


**Figure 40**

g309295

- |                     |               |
|---------------------|---------------|
| 1. Blower assembly  | 3. Pivot hole |
| 2. Blower-pivot pin | 4. Deck       |

2. Install the belt around the pulleys inside the blower (Figure 41).



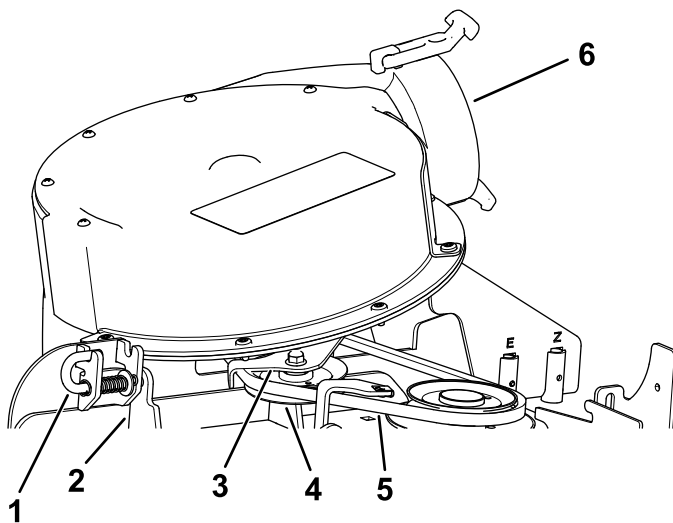
**Figure 41**

g309298

3. Lower the blower and slide the pivot pin into the pivot hole (Figure 40).

**Note:** Ensure that the belt remains positioned in the blower pulley.

4. Move the latch pin from the locking position to the open position (Figure 42).



**Figure 42**

g309296

- |                        |                                    |
|------------------------|------------------------------------|
| 1. Latch pin           | 4. Idler pulley                    |
| 2. Chute bracket       | 5. Belt (beneath the idler pulley) |
| 3. Idler-pivot bracket | 6. Blower assembly                 |

5. Close the blower assembly and align the latch pin with the hole in the chute bracket (Figure 42).
6. Move the latch pin to the locking position.

**Note:** Ensure that the latch pin extends through the hole in the chute bracket.

**Note:** Ensure that the latch firmly holds the blower assembly against the mower deck, but you can release it by hand.

# 15

## Installing the Blower Belt, Spring, and Blower-Belt Cover

Parts needed for this procedure:

1	Blower-belt cover
1	Cover knob

### Blower Models 78433–78438

1. Arrange the blower belt around the drive pulley as shown in [Figure 43](#).

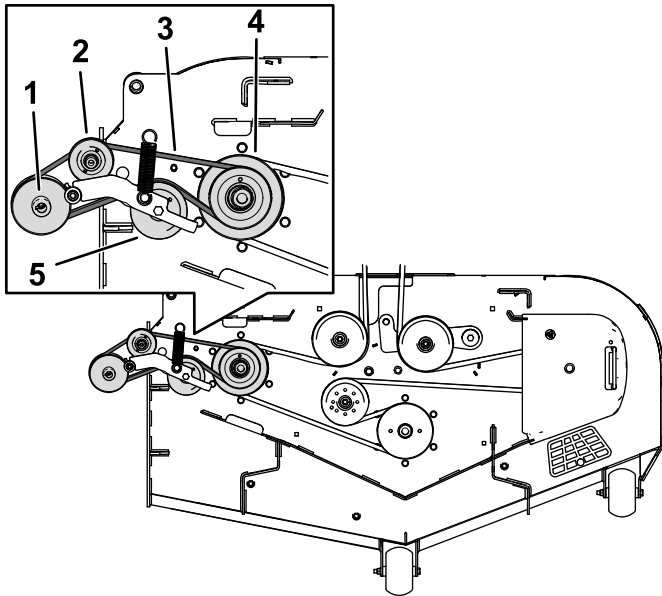


Figure 43

1. Blower pulley
2. Idler/pulley
3. Blower belt
4. Drive pulley
5. Idler/tension pulley

2. Temporarily route the belt beneath the idler pulley ([Figure 44](#)).

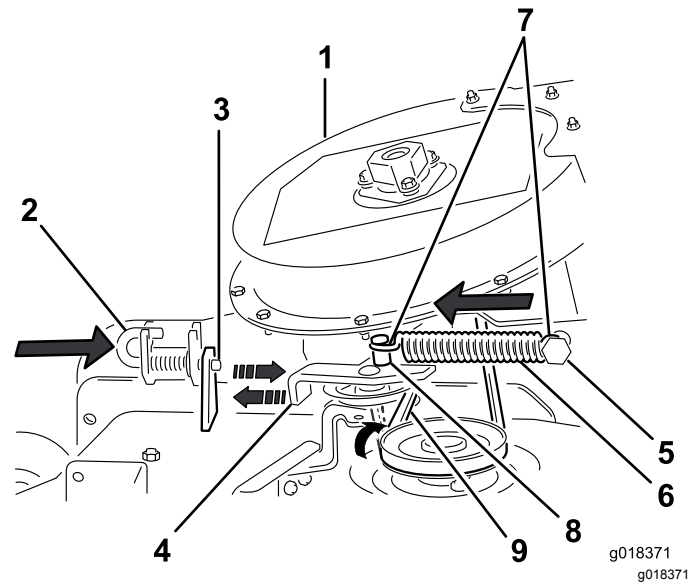


Figure 44

Installing the tension spring and aligning the belt

1. Blower assembly
2. Latch pin (locking position)
3. Chute bracket
4. Idler-pivot bracket
5. Fixed spring post
6. Spring
7. Idler-spring post
8. Spring (hook end)
9. Belt (aligned to the idler pulley)

3. Move the idler-pivot bracket toward the fixed spring post and install the spring by aligning the spring hook onto the idler-spring post ([Figure 44](#)).

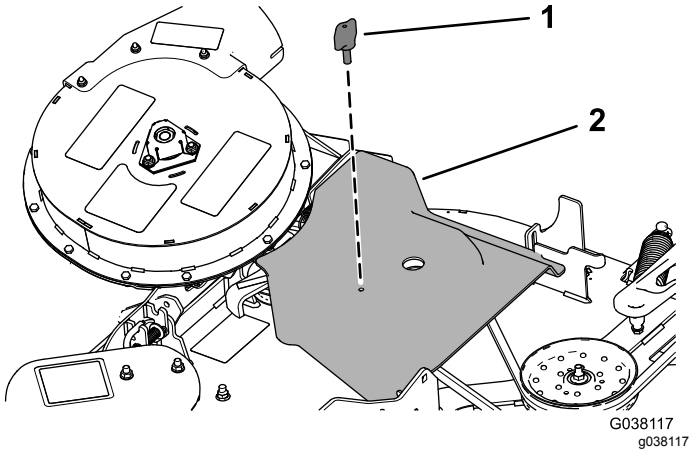
**Note:** Ensure that the spring hooks are positioned correctly on the spring posts.

4. Pull the spring-loaded idler pulley away from the fixed spring post, and route the belt around the deck pulley ([Figure 44](#)).

**Note:** Ensure that the belt is correctly routed around the blower pulley.



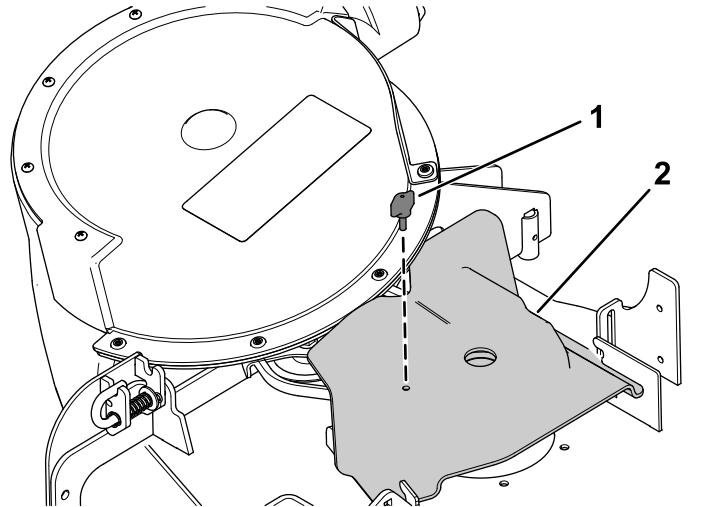
5. Install the blower-belt cover over the blower belt and secure the blower-belt cover with the belt knob (Figure 45).



**Figure 45**

1. Cover knob
2. Blower-belt cover

2. Install the blower-belt cover over the blower belt and secure the blower-belt cover with the knob (Figure 47).

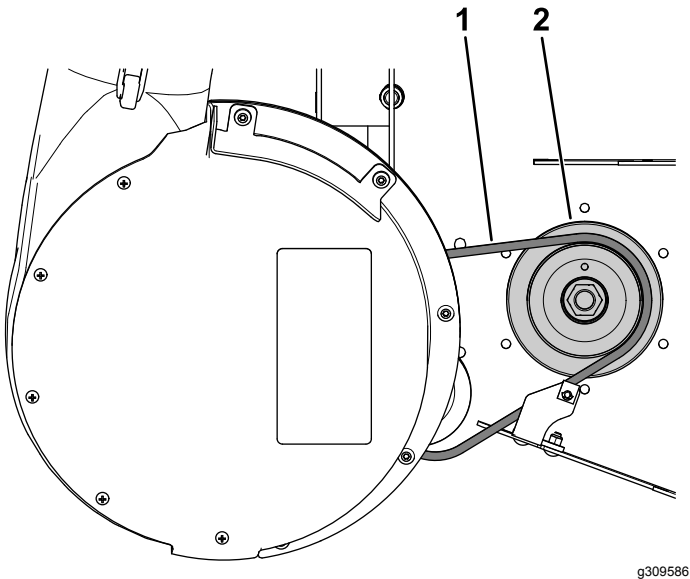


**Figure 47**

1. Knob
2. Belt cover

## Blower Models 78401–78406

1. Pull back the spring-loaded idler pulley and route the blower belt around the drive pulley (Figure 46).



**Figure 46**

1. Blower belt
2. Drive pulley

# 16

## Installing the Discharge Tubes

### Parts needed for this procedure:

1	Upper tube
1	Lower tube
3	Bolt (#10 x 3/4 inch)
3	Locknut (#10)
3	Washer (7/32 inch)

### Procedure

1. Disengage the PTO and engage the parking brake.
2. Shut off the engine, remove the key, and wait for all moving parts to stop before you leave the operating position.
3. Lower the machine deck to the lowest height-of-cut position.
4. Remove the bags for viewing the tube under the hood.
5. Install the upper tube into the bagger opening and pull it back out so that the hopper seal is protruding out (Figure 48).

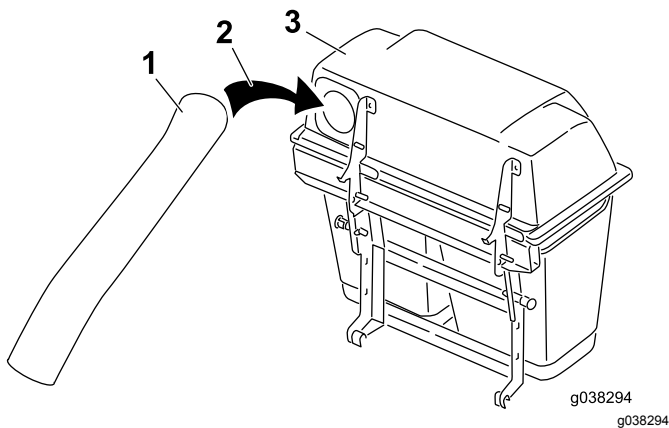


Figure 48

1. Upper tube
2. Bagger opening
3. Bagger hood

6. Align the dimple in the upper tube equally between the screws securing the hopper seal to the hopper (Figure 49).

**Note:** The hopper seal must protrude outward from the bagger hood.

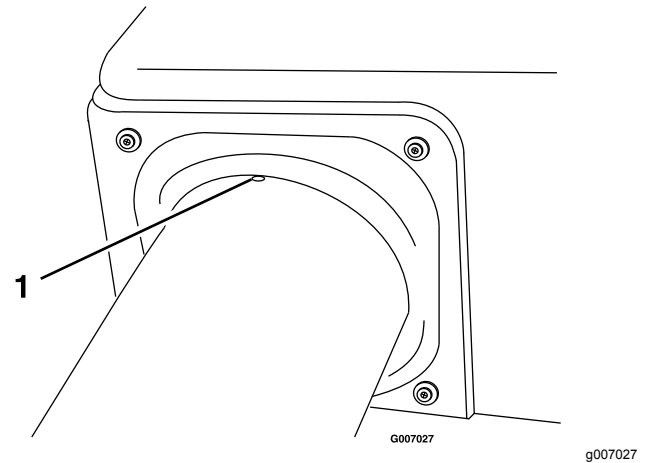


Figure 49

1. Dimple

7. Install the lower tube into the upper tube (Figure 50).

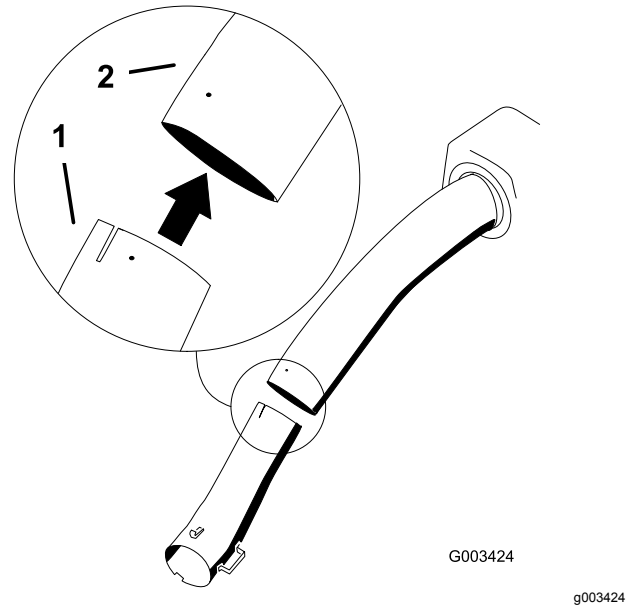
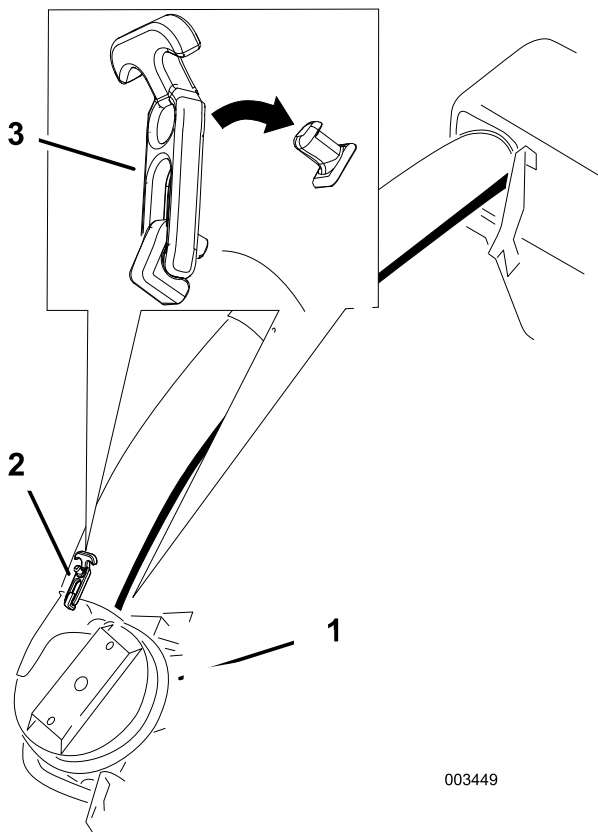


Figure 50

1. Lower tube
2. Upper tube

8. Slide the lower tube onto the blower housing and latch them together (Figure 51).

**Note:** There is a latch on the top and bottom of the blower housing.



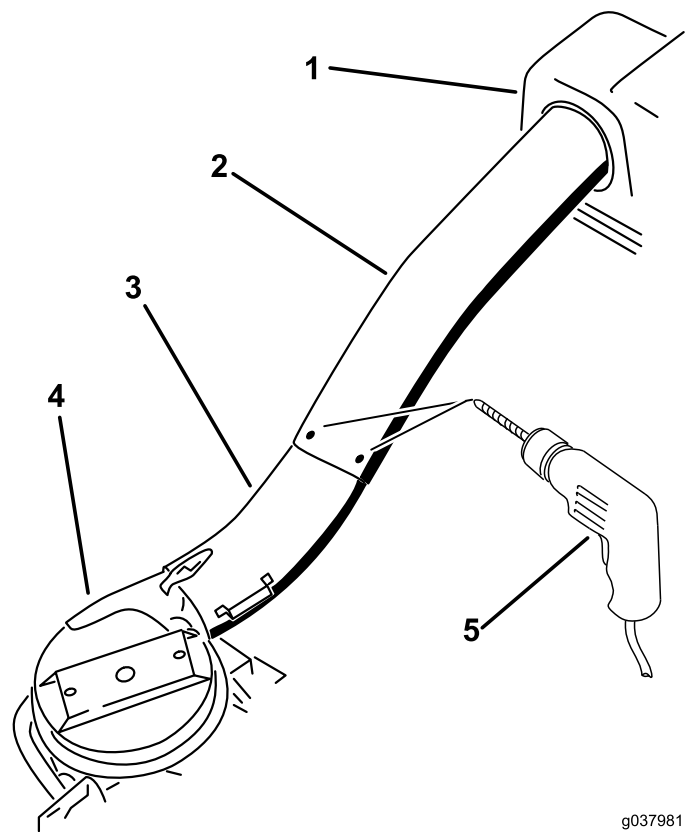
003449

g003449

**Figure 51**

- |                    |                              |
|--------------------|------------------------------|
| 1. Blower assembly | 3. Latch (twin bagger shown) |
| 2. Lower tube      |                              |

diameter) where the upper and lower tubes join together (Figure 52).



g037981  
g037981

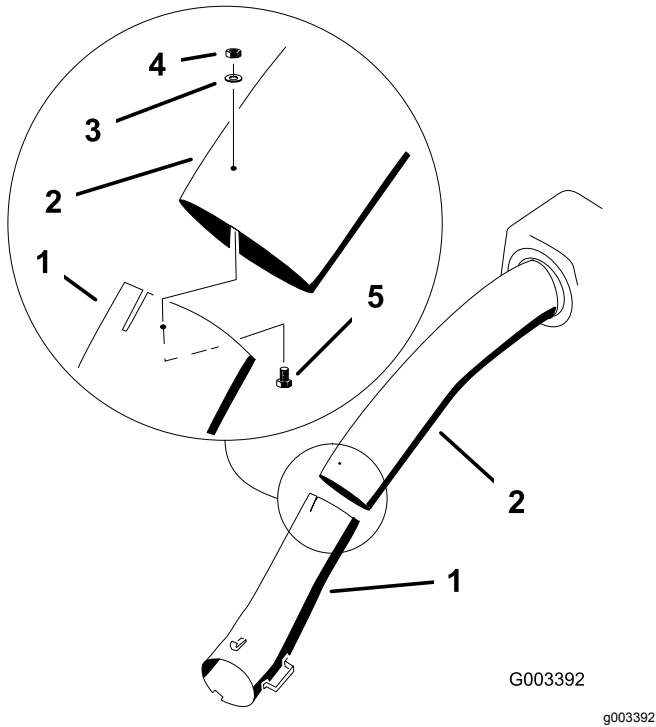
**Figure 52**

- |                |                            |
|----------------|----------------------------|
| 1. Bagger hood | 4. Blower assembly         |
| 2. Upper tube  | 5. Drill holes (7/32 inch) |
| 3. Lower tube  |                            |

- 
9. Ensure that the machine deck is in the lowest height-of-cut position.
  10. Verify that the dimple from Figure 49 is still in place.
  11. Using the 3 holes or indentations in the upper tube as a template, and drill 3 holes (7/32 inch

- 
12. Remove the lower tube from the blower housing.

13. Join the upper and lower tubes with 3 bolts (#10 x 3/4 inch), flat washers, and locknuts as shown in [Figure 53](#).



**Figure 53**

- |                            |                          |
|----------------------------|--------------------------|
| 1. Lower tube              | 4. Locknut (#10)         |
| 2. Upper tube              | 5. Bolt (#10 x 3/4 inch) |
| 3. Flat washer (7/32 inch) |                          |

14. Install the lower tube onto the blower housing and secure it with the latches.

# 17

## Adjusting the Parking Brake

No Parts Required

### Procedure

Check to ensure that the parking brake is adjusted properly. Refer to your *Operator's Manual* for the correct procedure.

# 18

## Checking the Tire Pressure

No Parts Required

### Procedure

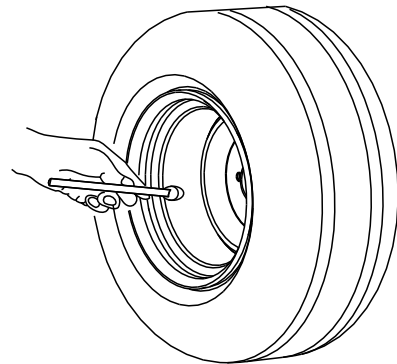
Increase the tire pressure due to the additional weight.

**Note:** This is not applicable with semi-pneumatic tires.

Check and increase the air pressure in the front caster wheels and rear tires ([Figure 54](#)).

Air pressure in the rear tires: 138 kPa (20 psi)

Air pressure in the front caster wheels: 172 kPa (25 psi)



**Figure 54**

# Operation

**Note:** Determine the left and right sides of the machine from the normal operating position.

## ⚠ WARNING

To avoid personal injury, follow these procedures:

- Become familiar with all operating and safety instructions in the *Operator's Manual* for the mower before using this attachment.
- Never remove the discharge tube, bags, bagger top, or the chute while the engine is running.
- Always shut the engine off and wait for all moving parts to stop before clearing an obstruction from the bagging system.
- Never do maintenance or repairs while the engine is running.

## ⚠ WARNING

Without the grass deflector, bagger tubes or complete bagger assembly mounted in place, you and others are exposed to blade contact and thrown debris. Contact with the rotating mower blade(s) and thrown debris will cause injury or death.

- Always install the grass deflector when removing the bagger and changing to side discharge mode.
- If the grass deflector is ever damaged, replace it immediately. The grass deflector routes material down toward the turf.
- Never put your hands or feet under the mower.
- Never try to clear the discharge area or mower blades unless you move the power take off (PTO) to off and rotate the ignition key to off. Also remove the key and pull the wire off of the spark plug(s).
- Turn off the engine before unclogging the discharge chute.

# Emptying the Grass Bags

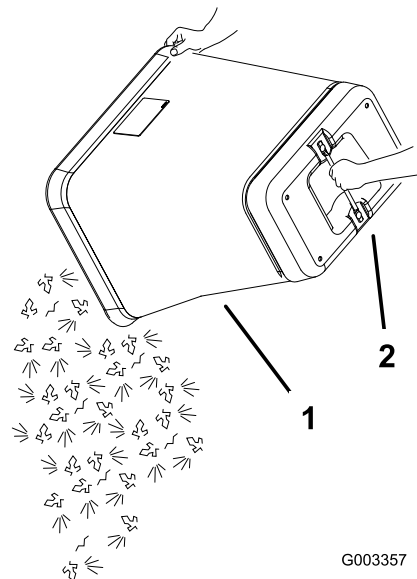
## ⚠ WARNING

Debris, such as leaves, grass, or brush can catch fire. A fire in the engine area can cause personal injury and property damage.

- Keep the engine and muffler area free of debris accumulation.
- Take care when opening the bagger cover to keep debris from falling onto the engine and muffler area.
- Allow the machine to cool before storing it.

Grass bags are heavy when full. Be careful when lifting or handling a grass bag that is full.

1. Park the machine on a level surface and disengage the blade control switch.
2. Move the motion control levers outward to the neutral lock position, shut off the engine, remove the key, set the parking brake and wait for all moving parts to stop before leaving the operating position.
3. Unlatch the bagger latch.
4. Open the bagger hood.
5. Compress the debris into the bags. With both hands, lift up on the bag and unhook it from the bagger bracket.
6. Grab the handle on the bottom of the bag and tip it over to empty the bag ([Figure 55](#)).



**Figure 55**

1. Bag
2. Bottom handle

7. Install the bag tab into the notch in the bagger support frame.

8. Lower the bagger hood over the bags.
9. Latch the bagger hood.

## Clearing Obstructions from the Bagger System

### **⚠ WARNING**

When the bagger is in operation, the blower is rotating and can cut off or injure hands and fingers.

- **Before adjusting, cleaning, repairing, and inspecting the blower, and before unclogging the chute, shut off the engine, wait for all moving parts to stop, and remove the key.**
  - **Ensure that the rotation indicator stops.**
  - **Use a stick, not your hands, to remove an obstruction from the blower and tube.**
  - **Keep your hands and feet away from moving parts. Do not make adjustments with the engine running.**
1. Disengage the PTO and engage the parking brake.
  2. Shut off the engine, remove the key, and wait for all moving parts to stop before leaving the operating position.
  3. Empty the bags.
  4. Unlatch the lower tube.
  5. Remove the tubes from the bagger.
  6. Use a stick or similar object to remove and clear the obstruction from the tube assembly.  
**Note:** In most cases, the debris can be shaken out of the tubes.
  7. If the blower assembly is plugged, unlatch the bagger blower assembly, remove the belt, and swing it open.
  8. Use a stick or similar object, not your hands, to remove and clear the obstruction from the blower assembly.
  9. Completely install the bagger system before you resume mowing.

## Removing the Bagger

### **⚠ WARNING**

Components around the engine are hot if the machine has been running. Touching hot components can cause burns.

- **Do not touch the engine hot components.**
  - **Allow engine to cool before removing the bagger.**
1. Disengage the PTO.
  2. Shut off the engine, engage the parking brake, remove the key, and wait for all moving parts to stop before leaving the operating position.
  3. Unlatch the lower tube from the blower and remove the tube from the blower assembly.
  4. Remove the tube from the bagger hood.
  5. Lower the mower deck to the lowest height-of-cut position.
  6. Remove the knob that secures the belt cover to the mower deck.
  7. Remove the blower belt from the mower-pulley assembly.
  8. Open the blower assembly.
  9. Remove the blower assembly from the pivot hole.
  10. If you are changing to side discharge mode, ensure that the grass deflector is installed and can be lowered into working position.
  11. Remove the hood and bag assembly.

## Transporting the Machine

Do not leave grass or debris in the bagger while transporting the machine.

### **⚠ DANGER**

**Transporting the machine with grass or debris in the bagger can damage the machine.**

**Do not leave grass or debris in the bagger while transporting the machine.**

# Operating Tips

## Tips for Bagging

### Remembering the Size

Remember that the machine is longer and wider with this attachment installed. By turning too sharply in confined places you may damage the attachment.

### Trimming

Always trim with the left side of the mower. Do not trim with the right side of the mower because you could damage the bagger chute and discharge tube.

### Cutting Height

Do not set the mower cutting height too low because long grass surrounding the mower can prevent air from getting under the mower and entering the bagging system. If not enough air gets under the mower, the bagging system will plug.

### Cutting Frequency

Cut the grass often, especially when it grows rapidly. You will have to cut your grass twice if it gets excessively long.

### Cutting Technique

For best lawn appearance, be sure to slightly overlap the mower into the previously cut area. This helps reduce the load on the engine and reduces the chance of plugging the chute and discharge tube.

### Bagging Speed

Most often, you will bag with the mower throttle in the FAST position and drive at a normal ground speed. However, in extremely dry and dusty grass, you may want to slightly reduce the throttle speed and increase the ground speed of the mower. The bagging system may plug if you drive too fast and the engine speed gets too slow. On hills, it may be necessary to slow the mower ground speed. This helps maintain the engine speed and bagging efficiency. Mow downhill whenever possible.

## **⚠ CAUTION**

As the bagger fills, extra weight is added to the back of the machine. If you stop and start the machine suddenly on hills, you may lose steering control or the machine may tip.

- **Do not start or stop suddenly when going uphill or downhill. Avoid uphill starts.**
- **If you do stop the machine when going uphill, disengage the blade control. Then back down the hill using a slow speed.**
- **Avoid sudden turns or rapid speed changes on slopes.**
- **Never operate the machine without the bagger attachment and the front weights still installed.**

### Bagging Long Grass

Excessively long grass is heavy and may not be propelled completely into the grass bags. If this happens, the discharge tube and chute may plug. To avoid plugging the bagging system, mow the grass at a high height of cut, then lower the mower to your normal cutting height and repeat the bagging process.

### Bagging Wet Grass

Always try to cut grass when it is dry because your lawn will have a neat appearance. If you must cut wet grass, use the conventional side discharge feature of the mower. Several hours later, when the clippings are dry, install the complete bagger attachment and vacuum up the grass clippings.

### Signs of Plugging

As you are bagging, a small amount of grass clippings normally blow out the front of the mower. An excessive amount of clippings blowing out indicates that the bags are full or the system is plugged.

# Maintenance

**Note:** Determine the left and right sides of the machine from the normal operating position.

## Recommended Maintenance Schedule(s)

Maintenance Service Interval	Maintenance Procedure
After the first 8 hours	<ul style="list-style-type: none"><li>• Inspect the blower belt.</li><li>• Inspect the bagger.</li></ul>
After the first 10 hours	<ul style="list-style-type: none"><li>• Inspect the bagger</li></ul>
Before each use or daily	<ul style="list-style-type: none"><li>• Clean the hood screen.</li><li>• Clean the bagger.</li></ul>
Every 25 hours	<ul style="list-style-type: none"><li>• Inspect the blower belt.</li></ul>
Every 50 hours	<ul style="list-style-type: none"><li>• Grease the idler arm (blower models 78433–78438 only).</li></ul>
Every 100 hours	<ul style="list-style-type: none"><li>• Inspect the bagger.</li></ul>
Before storage	<ul style="list-style-type: none"><li>• Inspect the bagger</li></ul>

### **⚠ WARNING**

If you leave the key in the ignition switch, someone could accidentally start the engine and seriously injure you or other bystanders.

Remove the key from the ignition and disconnect the wire from the spark plug before you do any maintenance. Set the wire aside so that it does not accidentally contact the spark plug.

### **⚠ WARNING**

Engines can become hot when they are operating. Burns can occur from contacting hot surfaces.

Allow engines, especially the muffler, to cool before touching.

### **⚠ WARNING**

Debris, such as leaves, grass, or brush can catch fire. A fire in the engine area can cause personal injury and property damage.

- Keep the engine and muffler area free of debris accumulation.
- Take care when opening the bagger cover to keep debris from falling onto the engine and muffler area.
- Allow the machine to cool before storing it.

## Cleaning the Hood Screen

**Service Interval:** Before each use or daily

The screens need to be cleaned before each use.

1. Park the machine on a level surface.
2. Disengage the blade-control switch, engage the parking brake, and move the motion-control levers outward to the NEUTRAL-LOCK position.
3. Shut off the engine and remove the key.
4. Open the bagger hood.
5. Clean the debris from the screen.
6. Close the bagger hood.



# Inspecting the Bagger Attachment

**Service Interval:** After the first 10 hours

Before storage

Inspect the bagger attachment after the first 10 hours of operation, and monthly thereafter.

1. Check the chute, discharge tube, and the bagger top. Replace these parts if they are cracked or broken.
2. Tighten all nuts, bolts, and screws.
3. Inspect all fasteners and latches; replace any missing or damaged.
4. Inspect the grass bags for deterioration.

## ⚠ WARNING

**You or bystanders could be severely injured by flying debris or thrown objects that may pass through torn, worn, or deteriorated grass bags.**

- Check the grass bags for holes, rips, wear, and other deterioration.
- Do not wash the grass bags.
- If the bag has deteriorated, install new grass bags supplied by the manufacturer of this bagger attachment.

# Cleaning the Bagger and Bags

**Service Interval:** Before each use or daily

The bagger needs to be cleaned daily.

1. Wash the inside and outside of the bagger hood, bags, tube, and the underside of the mower deck. Use a mild automotive detergent to remove dirt.
2. Ensure that you remove matted grass from all parts.
3. After washing all the parts, let them dry thoroughly.

**Note:** With all parts installed, start and run the machine for approximately 1 minute to assist in drying.

# Inspecting the Blower Belt

**Service Interval:** After the first 8 hours

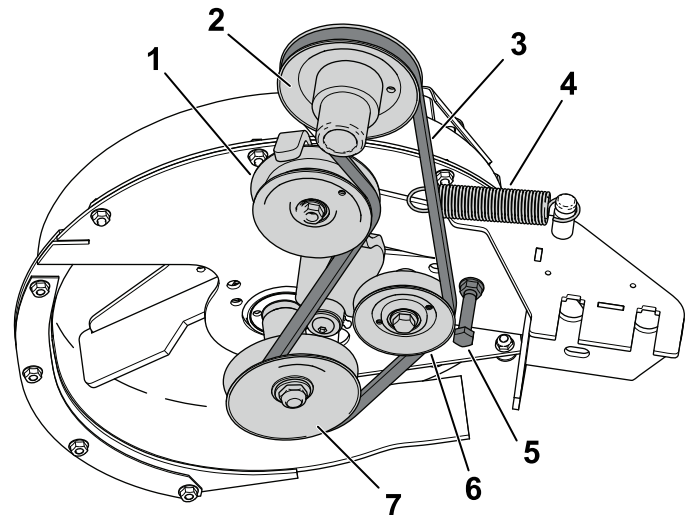
Every 25 hours

Check belts for cracks, frayed edges, burn marks, or any other damage. Replace any belts that are damaged.

# Replacing the Blower Belt

## Blower Models 78433–78438

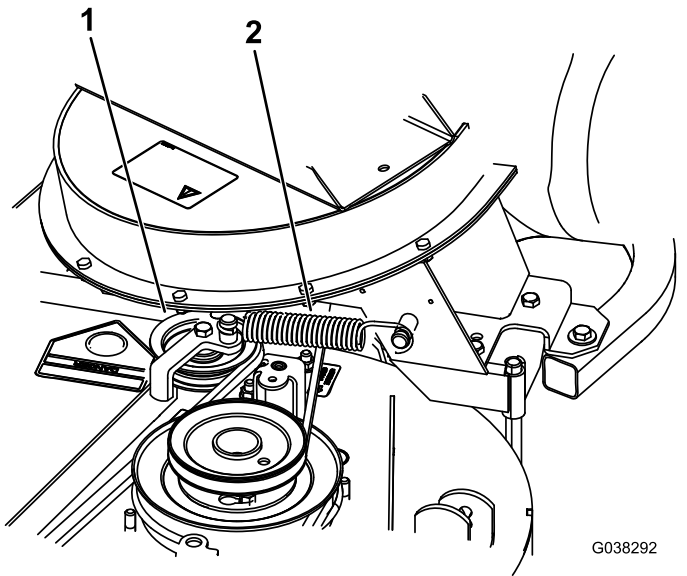
1. Disengage the PTO, move the motion-control levers to the NEUTRAL-LOCK position, and engage the parking brake.
2. Shut off the engine, remove the key, and wait for all moving parts to stop before leaving the operating position.
3. Loosen or remove belt guide (Figure 56).
4. Pull back on the spring-loaded idler pulley to relieve the belt tension (Figure 56).



**Figure 56**

- |                               |                  |
|-------------------------------|------------------|
| 1. Spring-loaded idler pulley | 5. Belt guide    |
| 2. Mower-deck pulley          | 6. Idler pulley  |
| 3. Belt                       | 7. Blower pulley |
| 4. Spring                     |                  |

5. Remove the existing blower belt.
6. Install the new belt around the blower pulley (Figure 56).
7. Tighten or install the belt guide (Figure 56).
8. Install the spring as shown in Figure 57.

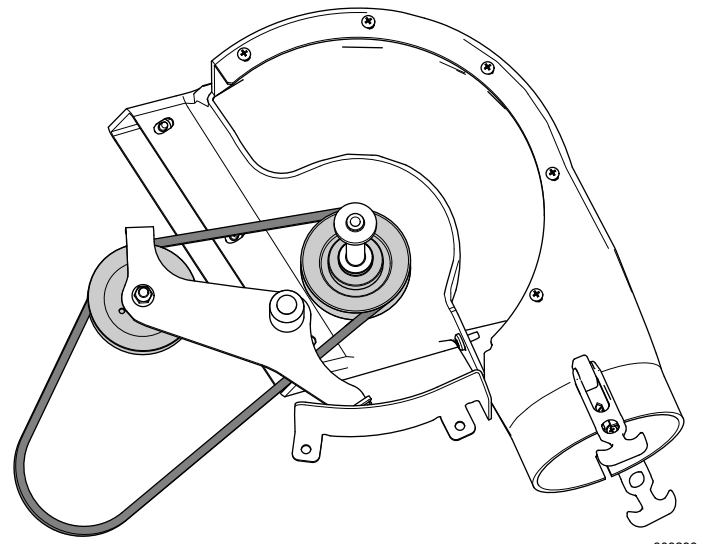


G038292  
g038292

**Figure 57**

1. Spring-loaded idler pulley
2. Spring

9. Install the belt onto the spring-loaded idler pulley (Figure 57).



g309298

**Figure 59**

6. Install the new belt around the blower pulley; refer to 15 Installing the Blower Belt, Spring, and Blower-Belt Cover (page 24).

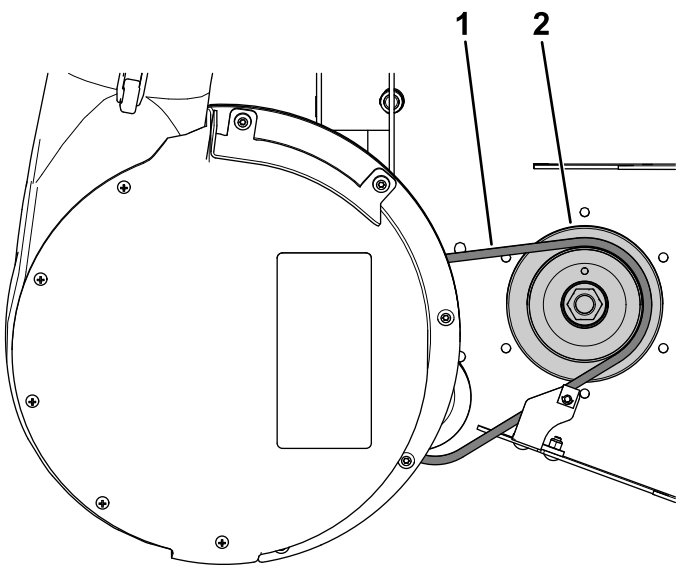
**Blower Models 78401–78406**

1. Park the machine on a level surface.
2. Disengage the blade-control switch, engage the parking brake, and move the motion-control levers outward to the NEUTRAL-LOCK position.
3. Shut off the engine and remove the key.
4. Pull back on the spring-loaded idler pulley to relieve the belt tension.
5. Remove the existing blower belt ( and ).

**Greasing the Idler Arm for Blower Models 78433–78438**

**Service Interval:** Every 50 hours

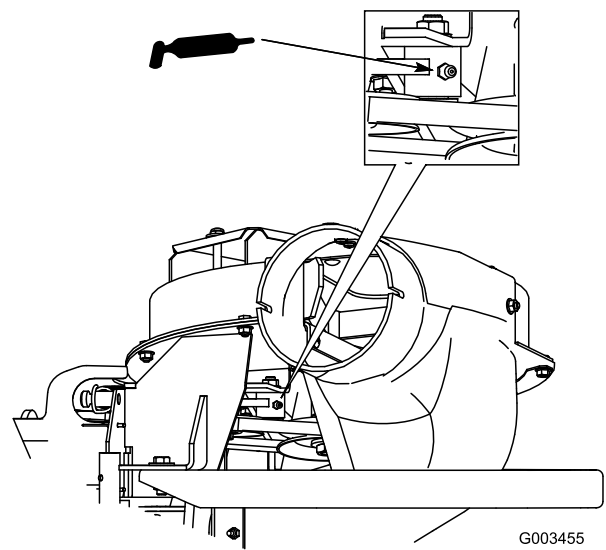
Grease the bagger belt idler arm (Figure 60) every 50 hours.



g309586

**Figure 58**

1. Blower belt
2. Drive pulley



G003455  
g003455

**Figure 60**

# Inspecting the Bagger

**Service Interval:** Every 100 hours

After the first 8 hours

1. Disengage the PTO, move the motion-control levers to the NEUTRAL-LOCK position, and engage the parking brake.
2. Shut off the engine, remove the key, and wait for all moving parts to stop before leaving the operating position.
3. Check the upper tube, lower tube, bagger hood, and the blower assembly. Replace these parts if they are cracked or broken.
4. Check the bags, bagger frame, and screen. Replace any parts that are cracked or broken.
5. Tighten all nuts, bolts, and screws.

# Inspecting the Mower Blades

1. Inspect the mower blades regularly and whenever a blade strikes a foreign object.
2. If blades are badly worn or damaged, install new blades. Refer to your machine *Operator's Manual* for complete blade maintenance.

# Selecting the Mower Blades

In most mowing conditions, the standard high lift blades provide the best bagging performance.

The Toro Atomic blade is recommended for bagging leaves in dry conditions. In dry dusty conditions, the medium lift or low lift blades reduce dust and dirt blowout while providing effective bagging air flow.

Contact an Authorized Service Dealer for the proper blades for different mowing conditions.

Refer to the machines *Operator's Manual* for more information on installing blades.

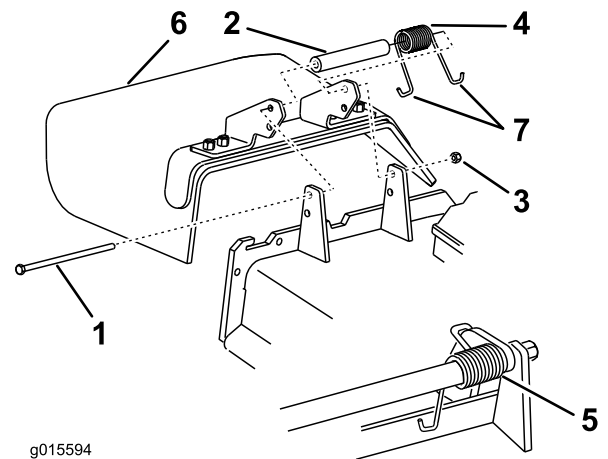
# Replacing the Grass Deflector

## ⚠ WARNING

An uncovered discharge opening could allow the machine to throw objects toward you or bystanders, resulting in serious injury. Also, contact with the blade could occur.

- Never operate the machine without a grass deflector, a mulch plate, or a bagger system installed.
- Ensure that the grass deflector is in the down position.

1. Place one end of the spring behind the deck edge and the other end on the grass deflector (Figure 61).



**Figure 61**

- |            |                     |
|------------|---------------------|
| 1. Bolt    | 5. Spring installed |
| 2. Spacer  | 6. Grass deflector  |
| 3. Locknut | 7. End of spring    |
| 4. Spring  |                     |

2. Use the bolt and nut to secure the grass deflector assembly to the mower deck (Figure 61).
3. Place the J-hook end of the spring around the grass deflector (Figure 61).

**Important:** The grass deflector must be able to lower down into position. Lift the deflector up to test that it lowers into the full-down position.

# Storage

1. Empty the bagger attachment; refer to [Emptying the Grass Bags \(page 29\)](#).
2. Inspect the bagger attachment for damage.
3. Ensure that the bags are empty and thoroughly dry.
4. Inspect the belt for wear or cracks; refer to [Inspecting the Blower Belt \(page 33\)](#).
5. Store the machine in a clean, dry place, out of direct sunlight. If you must store the machine outside, cover it with a weatherproof cover. This protects the plastic parts and extends the life of the machine.

# Troubleshooting

Problem	Possible Cause	Corrective Action
There is abnormal vibration.	<ol style="list-style-type: none"> <li>1. The cutting blade(s) is/are bent or unbalanced.</li> <li>2. The blade mounting bolt is loose.</li> <li>3. The blower pulley or pulley assembly is loose.</li> <li>4. The blower belt is worn.</li> <li>5. The blower fan blade(s) is/are bent or unbalanced.</li> </ol>	<ol style="list-style-type: none"> <li>1. Install new cutting blade(s).</li> <li>2. Tighten the blade mounting bolt.</li> <li>3. Tighten the appropriate pulley.</li> <li>4. Replace the belt.</li> <li>5. Contact an Authorized Service Dealer.</li> </ol>
There is reduced bagging performance.	<ol style="list-style-type: none"> <li>1. The engine speed is low.</li> <li>2. The bagger-hood screen is plugged.</li> <li>3. The blower belt is loose.</li> <li>4. The blower or tube is plugged.</li> <li>5. The bags are full.</li> </ol>	<ol style="list-style-type: none"> <li>1. Always operate the bagger at full throttle.</li> <li>2. Remove the debris, leaves or grass clippings from the screen.</li> <li>3. Replace the bagger belt.</li> <li>4. Locate and remove the plugged debris.</li> <li>5. Empty the bags.</li> </ol>
The blower and tubes plug too frequently.	<ol style="list-style-type: none"> <li>1. The engine speed is low.</li> <li>2. The grass is too wet.</li> <li>3. The grass is too long.</li> <li>4. The screen in the hood is plugged.</li> <li>5. The ground speed is too fast.</li> <li>6. The bagger belt is worn.</li> </ol>	<ol style="list-style-type: none"> <li>1. Always operate the bagger at full throttle.</li> <li>2. Cut the grass when it is dry.</li> <li>3. Do not cut more than 51 to 76 mm (2 to 3 inches) or 1/3 of the grass height, which ever is less.</li> <li>4. Remove the debris, leaves, or grass clippings from the screen.</li> <li>5. Drive slower at full throttle.</li> <li>6. Replace the belt.</li> </ol>
There is debris blowout.	<ol style="list-style-type: none"> <li>1. The bags are full.</li> <li>2. The ground speed is too fast.</li> <li>3. The mower deck is not leveled.</li> </ol>	<ol style="list-style-type: none"> <li>1. Dump the bags more frequently.</li> <li>2. Drive slower at full throttle.</li> <li>3. See the mower <i>Operator's Manual</i> for leveling the mower deck.</li> </ol>
The blower impeller does not spin freely.	<ol style="list-style-type: none"> <li>1. The blower is plugged.</li> <li>2. The impeller is not aligned.</li> </ol>	<ol style="list-style-type: none"> <li>1. Remove the debris, leaves, or grass clippings from the blower impeller.</li> <li>2. Contact an Authorized Service Dealer.</li> </ol>

**Notes:**

# California Proposition 65 Warning Information

## What is this warning?

You may see a product for sale that has a warning label like the following:



**WARNING: Cancer and Reproductive Harm—[www.p65Warnings.ca.gov](http://www.p65Warnings.ca.gov).**

## What is Prop 65?

Prop 65 applies to any company operating in California, selling products in California, or manufacturing products that may be sold in or brought into California. It mandates that the Governor of California maintain and publish a list of chemicals known to cause cancer, birth defects, and/or other reproductive harm. The list, which is updated annually, includes hundreds of chemicals found in many everyday items. The purpose of Prop 65 is to inform the public about exposure to these chemicals.

Prop 65 does not ban the sale of products containing these chemicals but instead requires warnings on any product, product packaging, or literature with the product. Moreover, a Prop 65 warning does not mean that a product is in violation of any product safety standards or requirements. In fact, the California government has clarified that a Prop 65 warning "is not the same as a regulatory decision that a product is 'safe' or 'unsafe.'" Many of these chemicals have been used in everyday products for years without documented harm. For more information, go to <https://oag.ca.gov/prop65/faqs-view-all>.

A Prop 65 warning means that a company has either (1) evaluated the exposure and has concluded that it exceeds the "no significant risk level"; or (2) has chosen to provide a warning based on its understanding about the presence of a listed chemical without attempting to evaluate the exposure.

## Does this law apply everywhere?

Prop 65 warnings are required under California law only. These warnings are seen throughout California in a wide range of settings, including but not limited to restaurants, grocery stores, hotels, schools, and hospitals, and on a wide variety of products. Additionally, some online and mail order retailers provide Prop 65 warnings on their websites or in catalogs.

## How do the California warnings compare to federal limits?

Prop 65 standards are often more stringent than federal and international standards. There are various substances that require a Prop 65 warning at levels that are far lower than federal action limits. For example, the Prop 65 standard for warnings for lead is 0.5 µg/day, which is well below the federal and international standards.

## Why don't all similar products carry the warning?

- Products sold in California require Prop 65 labelling while similar products sold elsewhere do not.
- A company involved in a Prop 65 lawsuit reaching a settlement may be required to use Prop 65 warnings for its products, but other companies making similar products may have no such requirement.
- The enforcement of Prop 65 is inconsistent.
- Companies may elect not to provide warnings because they conclude that they are not required to do so under Prop 65; a lack of warnings for a product does not mean that the product is free of listed chemicals at similar levels.

## Why does Toro include this warning?

Toro has chosen to provide consumers with as much information as possible so that they can make informed decisions about the products they buy and use. Toro provides warnings in certain cases based on its knowledge of the presence of one or more listed chemicals without evaluating the level of exposure, as not all the listed chemicals provide exposure limit requirements. While the exposure from Toro products may be negligible or well within the "no significant risk" range, out of an abundance of caution, Toro has elected to provide the Prop 65 warnings. Moreover, if Toro does not provide these warnings, it could be sued by the State of California or by private parties seeking to enforce Prop 65 and subject to substantial penalties.



**Count on it.**