



Groomer Kit

For Greensmaster® 3200 and 3250 Cutting Units

Model No. 04490

Parts Catalog

Ordering Replacement Parts

To order replacement parts, please supply: the part number, the quantity, and the description of each part desired.

Understanding Reference Numbers

Each identified part in an illustration has a reference number. The reference number for a part also appears in the parts list, along with other information about the part.

This catalog uses two special reference number formats, one to indicate parts in a service assembly and another to indicate the quantity of a given part in an illustration.

Service Assembly Reference Numbers

Parts in service assemblies have reference numbers in the form **a:b**. The **a** represents the reference number of the entire service assembly and the **b** represents a sequential number unique to each part within the service assembly.

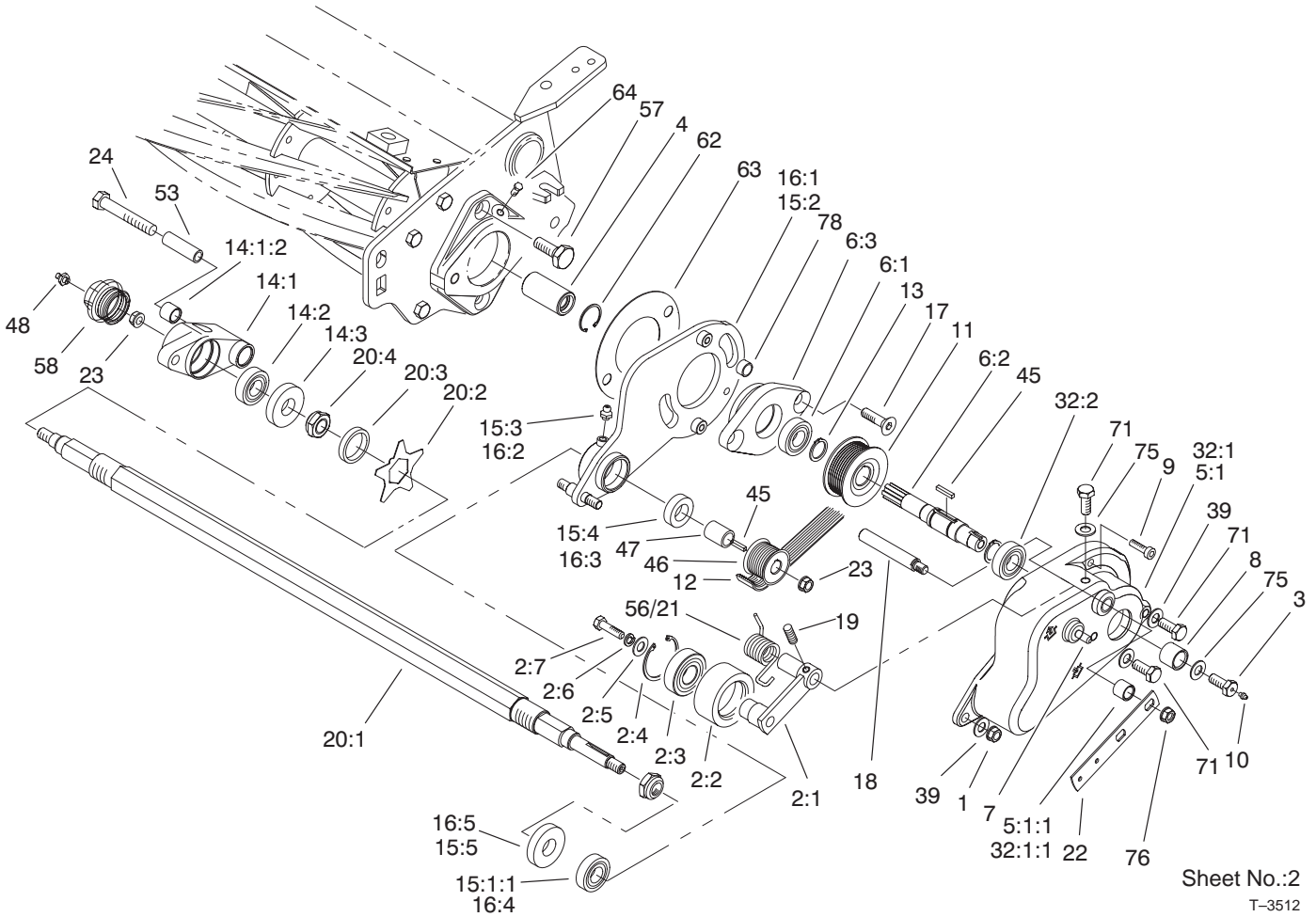
For example, a wheel assembly might be identified by reference number **6**, the tire by **6:1**, the valve by **6:2**, and the wheel by **6:3**. When you order the assembly identified by reference number **6**, you receive all parts identified by reference numbers **6:1**, **6:2**, and **6:3**. However, you may also order any part individually.

Reference numbers of this type appear in illustrations and in part lists.

Reference Numbers Indicating Quantity

In an illustration, if a reference number indicates more than one part, the reference number has the form **nX y**. The **n** represents the quantity of the part, the **X** is the multiplication symbol, and the **y** represents the reference number.

For example, in an illustration, the reference number **2X 37** means that two of the parts identified by reference number **37** are indicated.

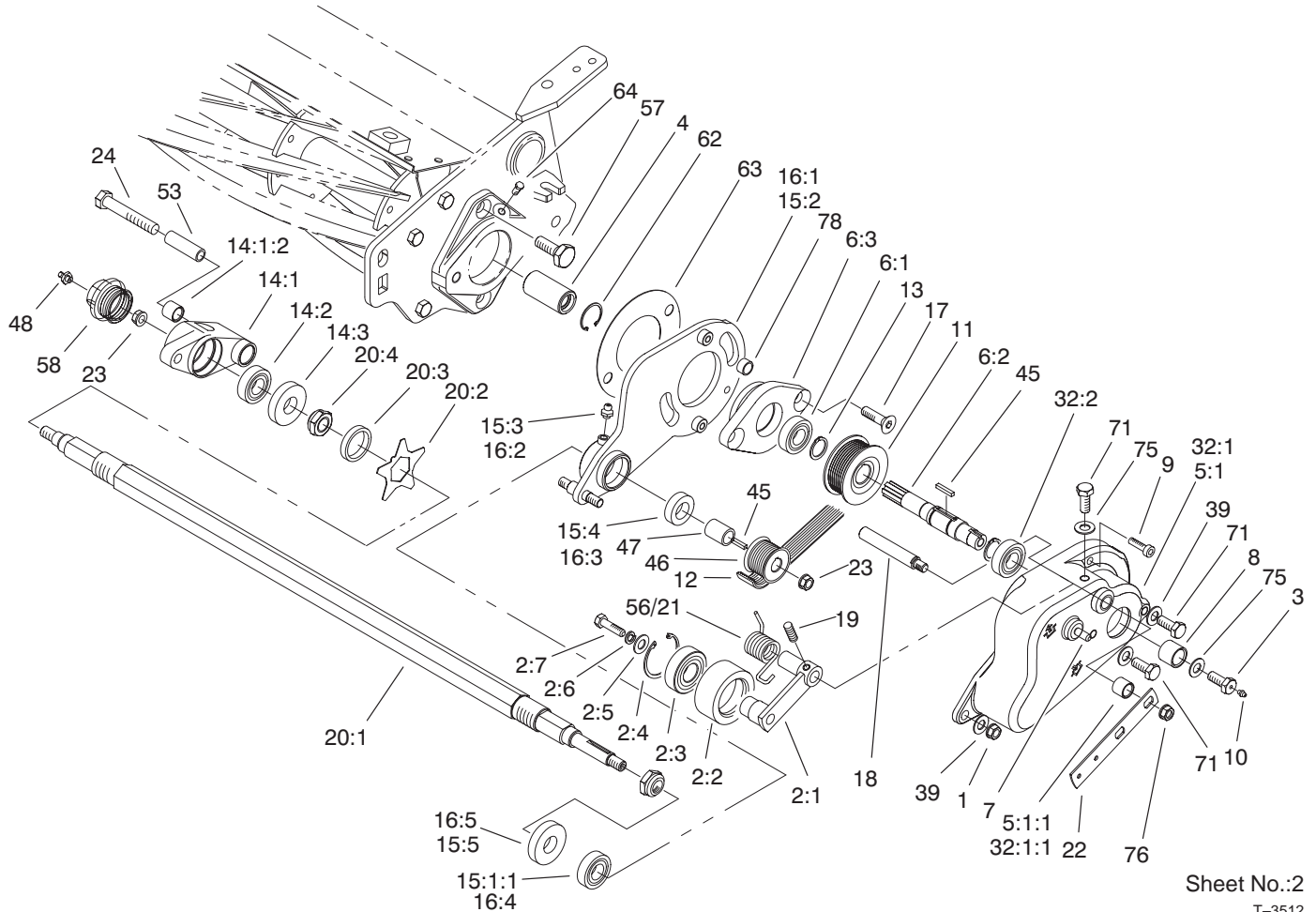


Sheet No.:2
T-3512

Housing and Pivot Plate Assembly

Ref. No.	Part No.	Qty.	Description
1	33024-00	3	Nut-Lock, NI
2		3	Idler/Pulley/Bshg ASM
2:1	95-0703	1	Arm-Idler
2:2	95-0744	1	Pulley - Idler
2:3	38-7820	1	Bearing-Ball
2:4	32120-42	1	Ring-Retaining
2:5	88-7200	1	Washer-Flat
2:6	3253-4	1	Washer
2:7	33114-020	1	Screw-HH
3	95-2936	3	Capscrew
4	94-4507	3	Coupler - Splined
5		1	RH Housing/Bearing ASM
5:1	95-0716	1	Housing - Cover, RH
5:1:1	95-9617	2	Bushing - Bronze, Str
5:2	251-336	1	Bearing
6		3	Pivot-Adptr/Shaft/Brg
6:1	251-336	1	Bearing
6:2	95-0740	1	Shaft - Drive, Groomer
6:3	95-7141	1	Adapter-Plate, Pivot
7	95-5992	3	Pin-Dowel
8	95-6123	3	Spacer - Shaft, Drive
9	3274-101	6	Screw-Head, Socket
10	302-18	3	Fitting-Grease
11	95-0742	3	Pulley - Drive

Ref. No.	Part No.	Qty.	Description
12	95-0728	3	Belt - Drive, Poly-V
13	32151-12	6	Ring-Retaining
14		3	Hub / Bearing ASM
14:1	94-9230	1	Hub-Bearing
14:1:2	95-0709	2	Bushing - Oilite
14:2	95-0707	1	Bearing-Aligning, Self
14:3	95-0725	1	Seal - Grease
15		1	RH Pivot Plate/Bearing ASM
15:1		1	Packed Bearing ASM
15:1:1	95-0707	1	Bearing-Aligning, Self
15:2	95-0710	1	Plate - Pivot
15:3	302-5	1	Fitting-Lube
15:4	95-9616	1	Seal
15:5	95-0725	1	Seal - Grease
16		2	LH Pivot Plate/Bearing ASM
16:1	95-0749	1	Plate-Pivot
16:2	302-5	1	Fitting-Lube
16:3	95-9616	1	Seal
16:4	95-0707	1	Bearing-Aligning, Self
16:5	95-0725	1	Seal - Grease
17	3289-26	6	Capscrew-HSFH
18	95-0739	3	Shaft-Idler, Pivot
19	3245-1	3	Screw-Set, HSH
20		3	Shaft / Blade ASM

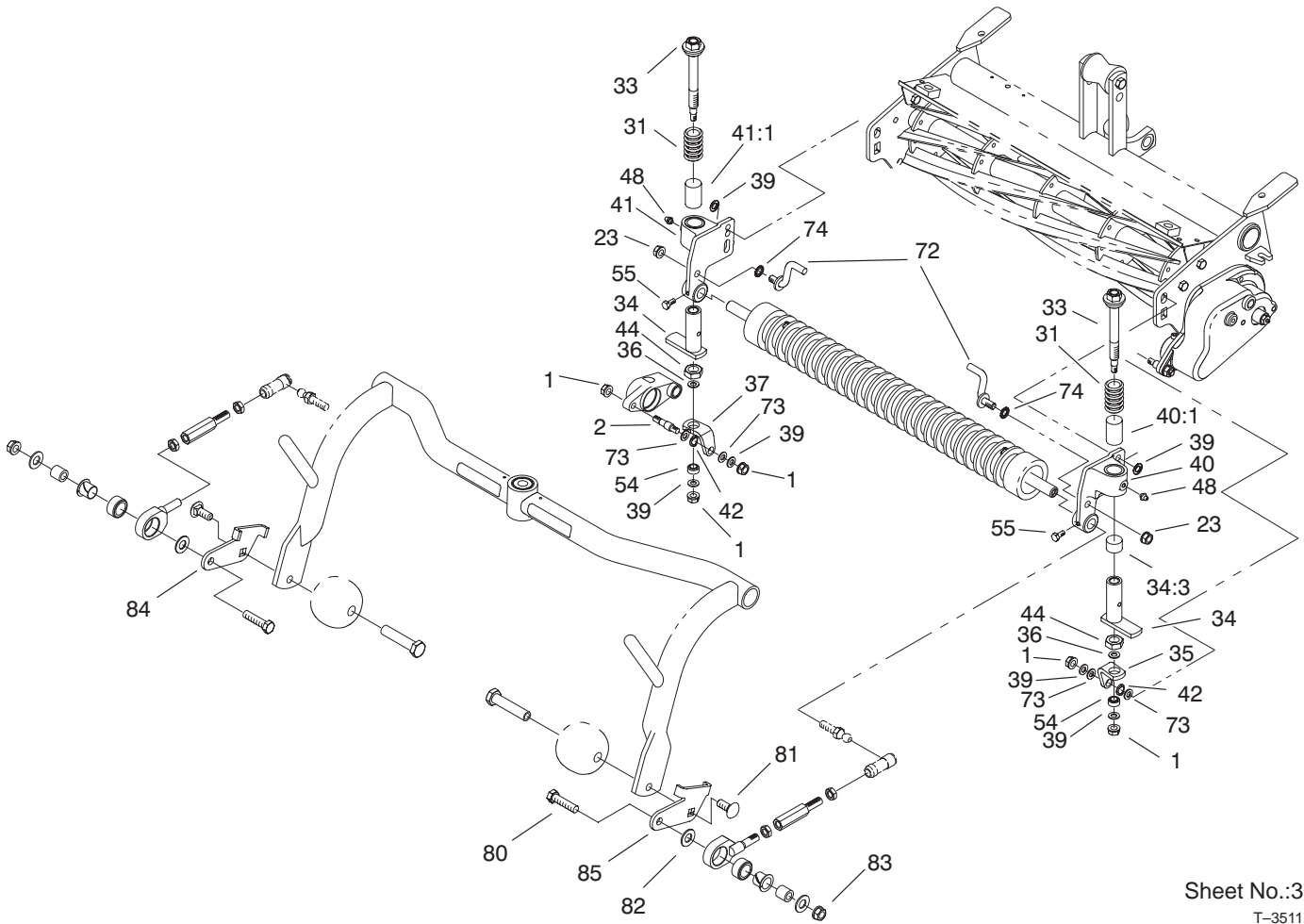


Sheet No.:2
T-3512

Housing and Pivot Plate Assembly

Ref. No.	Part No.	Qty.	Description
20:1	98-1835	1	Shaft-Groomer
20:2	95-5719	41	Blade-Groomer
20:3	70-1350	84	Spacer
20:4	3296-60	2	Nut-Lock NI
21	95-9614	1	Spring - Idler, Right
22	98-3584	3	Lever - Control
23	33025-00	6	Nut-Lock, NI
24	33105-070	3	Screw-HHF
32		2	LH Housing/Bearing ASM
32:1	95-0724	1	Housing - Cover, LH
32:1:1	95-9617	2	Bushing - Bronze, Str
32:2	251-336	1	Bearing
39	3256-23	9	Washer-Flat
45	95-9615	6	Key-Square
46	95-0743	3	Pulley - Driven
47	95-0733	3	Spacer - Pulley, Driven
48	302-5	3	Fitting-Lube
53	95-7002	3	Tube - Pivot, Bearing
56	95-7000	2	Spring - Idler, Left
57	95-0745	6	Screw - Tapered
58	95-7859	3	Plug - Cap
62	32120-37	3	Ring-Retaining
63	95-7009	3	Shim
64	302-59	3	Threaded Plug

Ref. No.	Part No.	Qty.	Description
71	33114-008	8	Screw-HH
75	88-7200	5	Washer-Flat
76	98-0668	3	Nut
78	98-1811	6	Spacer



Sheet No.:3
T-3511

Front Roller Bracket and Groomer Extension Assembly

Ref. No.	Part No.	Qty.	Description
1	33024-00	15	Nut-Lock, NI
2	95-7008	3	Pin - Dowel, Plated
23	33025-00	6	Nut-Lock, NI
31	100-6429	6	Spring-Compression
33	95-0747	6	Adjustment Bolt ASM
34	95-0720	6	Tube-Support, Adjustment
34:3	98-9002	1	Bushing - Sleeve
35	98-1804	3	Bracket - Pivot, LH
36	40-1940	6	Washer
37	98-1803	3	Bracket - Pivot, RH
39	3256-23	18	Washer-Flat
40	95-7111	3	Bracket-Roller
40:1	98-1499	1	Bushing - Sleeve
41	95-7112	3	Bracket-Roller
41:1	98-1499	1	Bushing - Sleeve
42	95-7862	6	Washer - Wave, Spring
44	51-2070	6	Nut
48	302-5	6	Fitting-Lube
54	98-3583	6	Bushing-Ball
55	33113-012	6	Screw-HH
72	95-0702	6	Rod - Adjustment
73	95-7863	12	Washer
74	3255-9	6	Washer-Lock/Ext
80	323-8	4	Screw-HH

Ref. No.	Part No.	Qty.	Description
81	3231-2	4	Screw-CARR
82	3256-4	4	Washer-Flat
83	3296-39	4	Nut-Lock, NI
84	99-4148	2	Bracket-Link, RH
85	99-4149	2	Bracket-link, LH

Maintenance Record

Date								

Maintenance Record

Date								

Maintenance Record

Date								

