



# HD Spring Kit

## Titan® Riding Mower

Model No. 140-2069

### Installation Instructions

## Installation

### Preparing the Machine

1. Park the machine on a level surface.
2. Disengage the blade-control switch.
3. Engage the parking brake.
4. Move the motion-control levers outward to the NEUTRAL-LOCK position.
5. Shut off the engine and remove the key.

### Removing the Existing Rear Springs

1. Remove the cam locknut (1/2 inch) securing the top of the existing rear spring ([Figure 1](#)).  
Retain the cam locknut (1/2 inch).
2. Remove the flange nut (3/8 inch) securing the bottom of the existing rear spring ([Figure 1](#)).  
Retain the flange nut (3/8 inch).
3. Remove the existing rear spring ([Figure 1](#)).
4. Repeat this procedure on the other side.

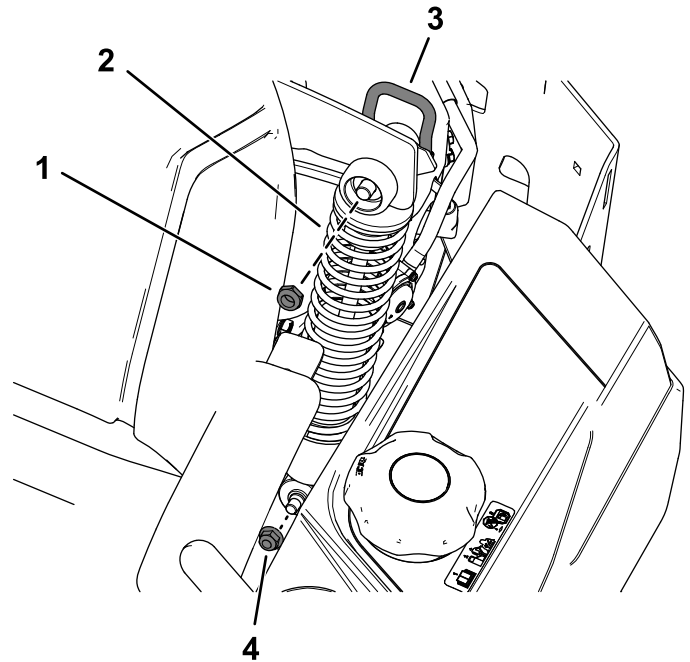


Figure 1

g209520

- |                           |  |
|---------------------------|--|
| 1. Cam locknut (1/2 inch) | 3. Cam-lock lever in the locked position |
| 2. Rear spring            | 4. Flange nut (3/8 inch)                 |

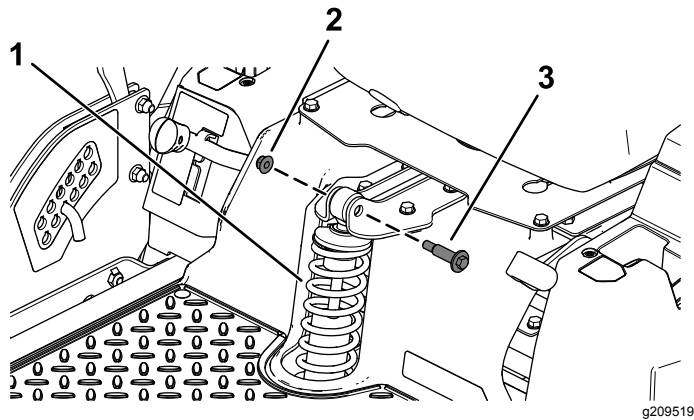
### Installing the New Rear Heavy-Duty Springs

1. Install the new rear spring using the previously removed cam locknut (1/2 inch) and flange nut (3/8 inch) as shown in [Figure 1](#).
2. With the cam-lock lever in the locked position, torque the cam locknut (1/2 inch) to 15 to 16 N·m (135 to 145 in·lb).
3. Repeat this procedure on the other side.



# Removing the Existing Front Spring

1. Place a 38 x 89 mm (2 x 4 inch) board under the foot rest to block the front of the platform.
2. Remove the 2 shoulder bolts and 2 flange nuts (3/8 inch) securing the existing front spring (Figure 2).  
Retain the 2 shoulder bolts and 2 flange nuts (3/8 inch).
3. Remove the existing front spring (Figure 2).



**Figure 2**

Top of the front spring shown

- |                          |                  |
|--------------------------|------------------|
| 1. Front spring          | 3. Shoulder bolt |
| 2. Flange nut (3/8 inch) |                  |

---

# Installing the New Front Heavy-Duty Spring

Install the new front spring using the previously removed 2 shoulder bolts and 2 flange nuts (3/8 inch) as shown in Figure 2.