

60in Leaf Bagging Enhancement Kit

Zero-Turn-Radius Riding Mower

Model No. 140-5122

Installation Instructions

⚠ WARNING

CALIFORNIA Proposition 65 Warning

Use of this product may cause exposure to chemicals known to the State of California to cause cancer, birth defects, or other reproductive harm.

Determine the left and right sides of the machine from the normal operating position.

Preparing the Machine

1. Park the machine on a level surface.
2. Disengage the blade-control switch.
3. Engage the parking brake.
4. Shut off the engine and remove the key.
5. For easier access, raise the front of the machine and support it using jackstands rated for your machine.

⚠ WARNING

Mechanical or hydraulic jacks may fail to support the machine and cause serious injury.

Use jack stands when supporting the machine.

Installing the Kit

Install the 2 skirts and 2 plates using 12 bolts and 12 nuts ([Figure 1](#)).

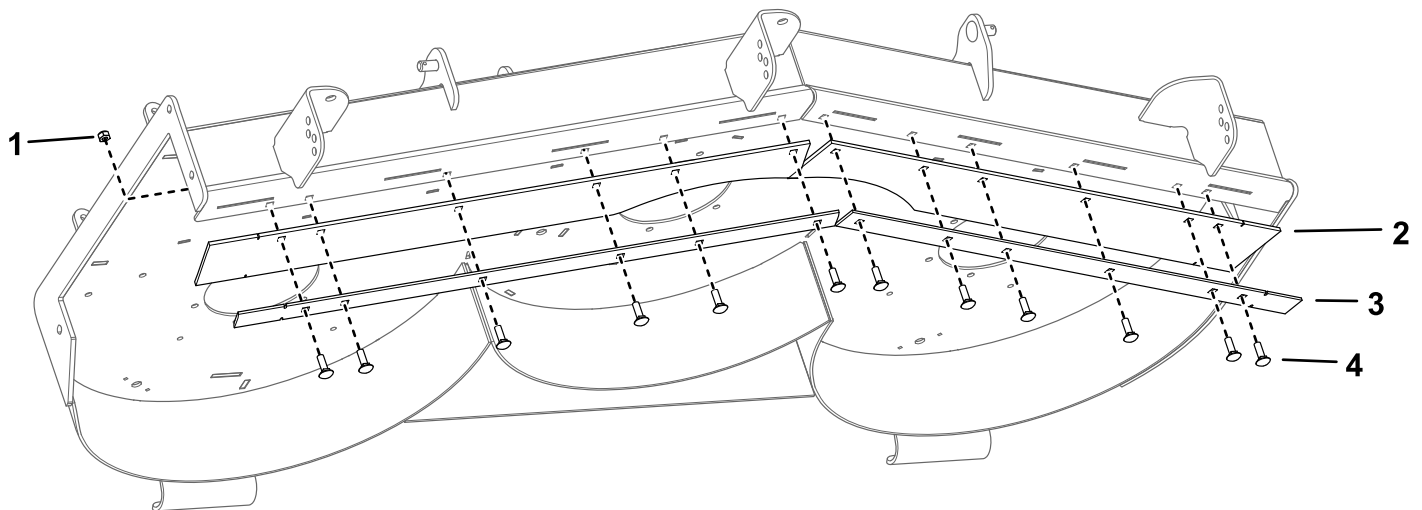


Figure 1

g310767

1. Nut (12)
2. Skirt (2)

3. Plate (2)
4. Bolt (12)



