



# Heavy Duty Spring Kit

## TimeCutter® MyRide Riding Mower

Model No. 140-2051

### Installation Instructions

# Installation

## Loose Parts

Use the chart below to verify that all parts have been shipped.

Description	Qty.	Use
No parts required	–	Prepare the machine.
No parts required	–	Remove the existing front spring.
Spring	1	Install the new heavy-duty spring.
Spring spacer	2	Install the spring spacers.
Set screw	2	
Spring-lift tube	1	

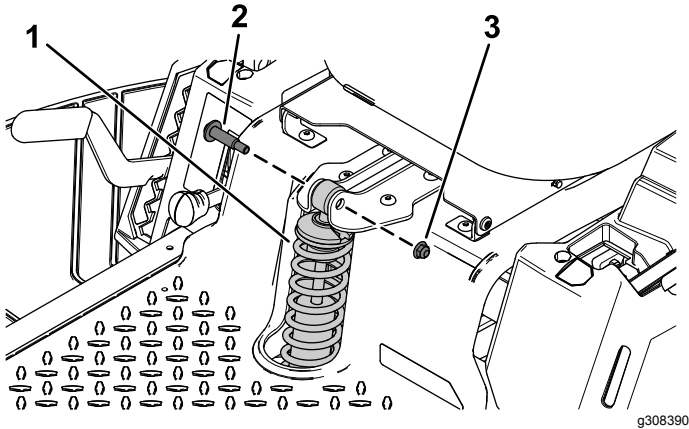
## Preparing the Machine

1. Park the machine on a level surface.
2. Disengage the blade-control switch.
3. Move the motion-control levers outward to the NEUTRAL-LOCK position.
4. Shut off the engine and remove the key.



## Removing the Existing Front Spring

1. Place a 38 x 89 mm (2 x 4 inch) board under the foot rest to block the front of the platform.
  2. Remove the 2 shoulder bolts and 2 locknuts (3/8 inch) securing the existing front spring ([Figure 1](#)).
- Retain the 2 shoulder bolts and 2 locknuts (3/8 inch).
3. Remove the existing front spring ([Figure 1](#)).



**Figure 1**

Top of the front spring shown

- |                  |                       |
|------------------|-----------------------|
| 1. Front spring  | 3. Locknut (3/8 inch) |
| 2. Shoulder bolt |                       |

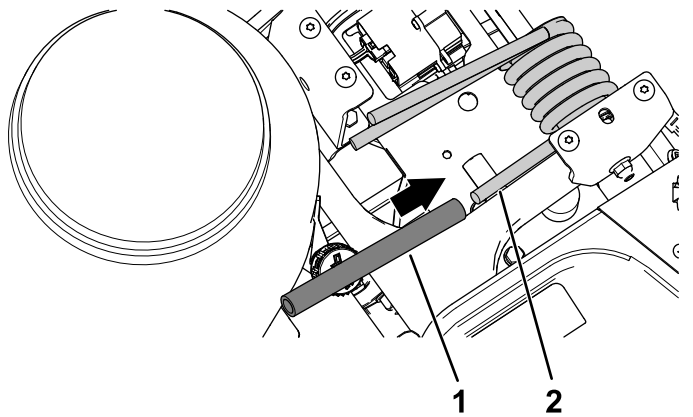
## Installing the New Heavy-Duty Spring

Install the new spring using the previously removed 2 shoulder bolts and 2 locknuts (3/8 inch) as shown in [Figure 1](#).

# Installing the Spring Spacers

1. Raise the seat.
2. Place the spring-lift tube onto the end of the torsion spring (Figure 2).

**Note:** Ensure that the spring-lift tube is securely seated on the end of the torsion spring.

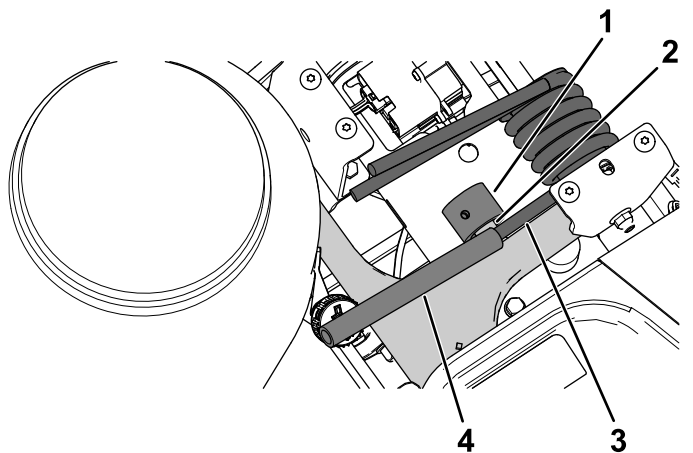


**Figure 2**

g309475

- |                     |                   |
|---------------------|-------------------|
| 1. Spring-lift tube | 2. Torsion spring |
|---------------------|-------------------|

3. Slide the spring spacer onto the swing-arm post (Figure 3).
4. Use one hand to lift the end of the torsion spring off the swing-arm post and slide the spacer between the torsion spring and swing-arm post (Figure 3).

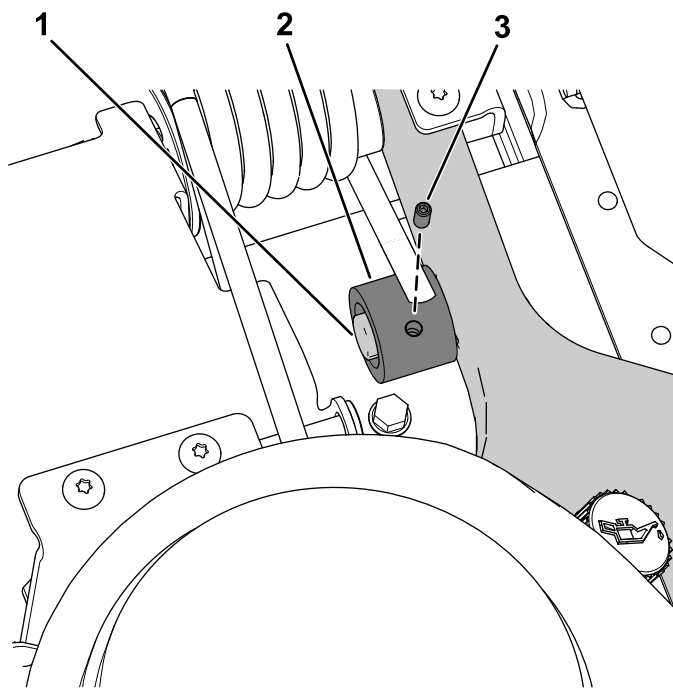


**Figure 3**

g309474

- |                   |                     |
|-------------------|---------------------|
| 1. Spring spacer  | 3. Torsion spring   |
| 2. Swing-arm post | 4. Spring-lift tube |

5. Secure the spring spacer to the swing-arm post using the set screw (Figure 4).



**Figure 4**

g309473

- |                   |              |
|-------------------|--------------|
| 1. Swing-arm post | 3. Set screw |
| 2. Spring spacer  |              |

6. Repeat this procedure on the other side.
7. Lower the seat.



**Count on it.**