



# Suspension Kit

## for Greensmaster® 3200

Part No. 99-4100

## Parts Catalog

### Ordering Replacement Parts

To order replacement parts, please supply: the part number, the quantity, and the description of each part desired.

### Understanding Reference Numbers

Each identified part in an illustration has a reference number. The reference number for a part also appears in the parts list, along with other information about the part.

This catalog uses two special reference number formats, one to indicate parts in a service assembly and another to indicate the quantity of a given part in an illustration.

### Service Assembly Reference Numbers

Parts in service assemblies have reference numbers in the form **a:b**. The **a** represents the reference number of the entire service assembly and the **b** represents a sequential number unique to each part within the service assembly.

For example, a wheel assembly might be identified by reference number **6**, the tire by **6:1**, the valve by **6:2**, and the wheel by **6:3**. When you order the assembly identified by reference number **6**, you receive all parts identified by reference numbers **6:1**, **6:2**, and **6:3**. However, you may also order any part individually.

Reference numbers of this type appear in illustrations and in part lists.

### Reference Numbers Indicating Quantity

In an illustration, if a reference number indicates more than one part, the reference number has the form **nX y**. The **n** represents the quantity of the part, the **X** is the multiplication symbol, and the **y** represents the reference number.

For example, in an illustration, the reference number **2X 37** means that two of the parts identified by reference number **37** are indicated.

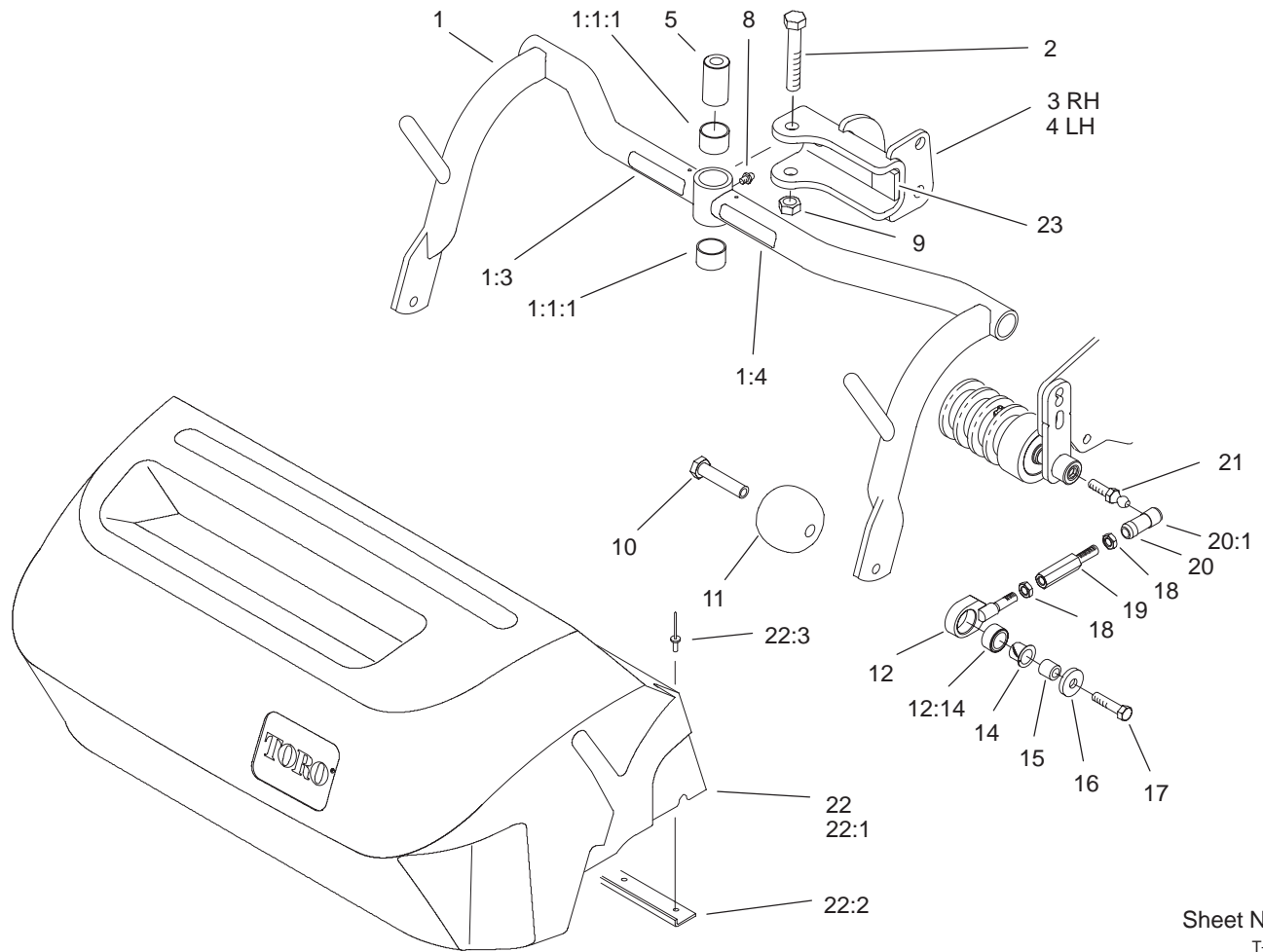
## Contents

<b>Description</b>	<b>Page</b>	<b>Description</b>	<b>Page</b>
Pull Frame Assembly .....	3	Center Lift Arm Assembly .....	5
LH & RH Lift Arm Assembly (Right Side Shown) .	4	Hydrostat & Gear Pump Drive Assembly .....	6

## Part Description Abbreviations

Part descriptions in this catalog may include the following abbreviations.

<b>Abbreviation</b>	<b>Meaning</b>	<b>Abbreviation</b>	<b>Meaning</b>
AR .....	as required	INC .....	incorporated
ASM .....	assembly	LH .....	left hand
CARR .....	carriage	NI .....	nylon insert
DEG .....	degrees	PPH .....	Phillips pan head
FH .....	flat head	PTH .....	Phillips truss head
GA .....	gauge	PTO .....	power take off
HF .....	hex flange	RH .....	right hand
HH .....	hex head	SFH .....	slotted fillister head
HHF .....	hex head flange	SHH .....	slotted hex head
HLH .....	hex lag head	SQH .....	square head
HJ .....	hex jam	SHWH .....	slotted hex washer head
HOC .....	height-of-cut	SPH .....	slotted pan head
HS .....	hex socket	SRH .....	slotted round head
HSBH .....	hex socket button head	STD .....	standard
HSFH .....	hex socket flat head	TAP .....	self tapping
HSH .....	hex socket head	TTH .....	Torx truss head
HWH .....	hex washer head	WH .....	wing head
HWHTF .....	hex washer head thread forming		



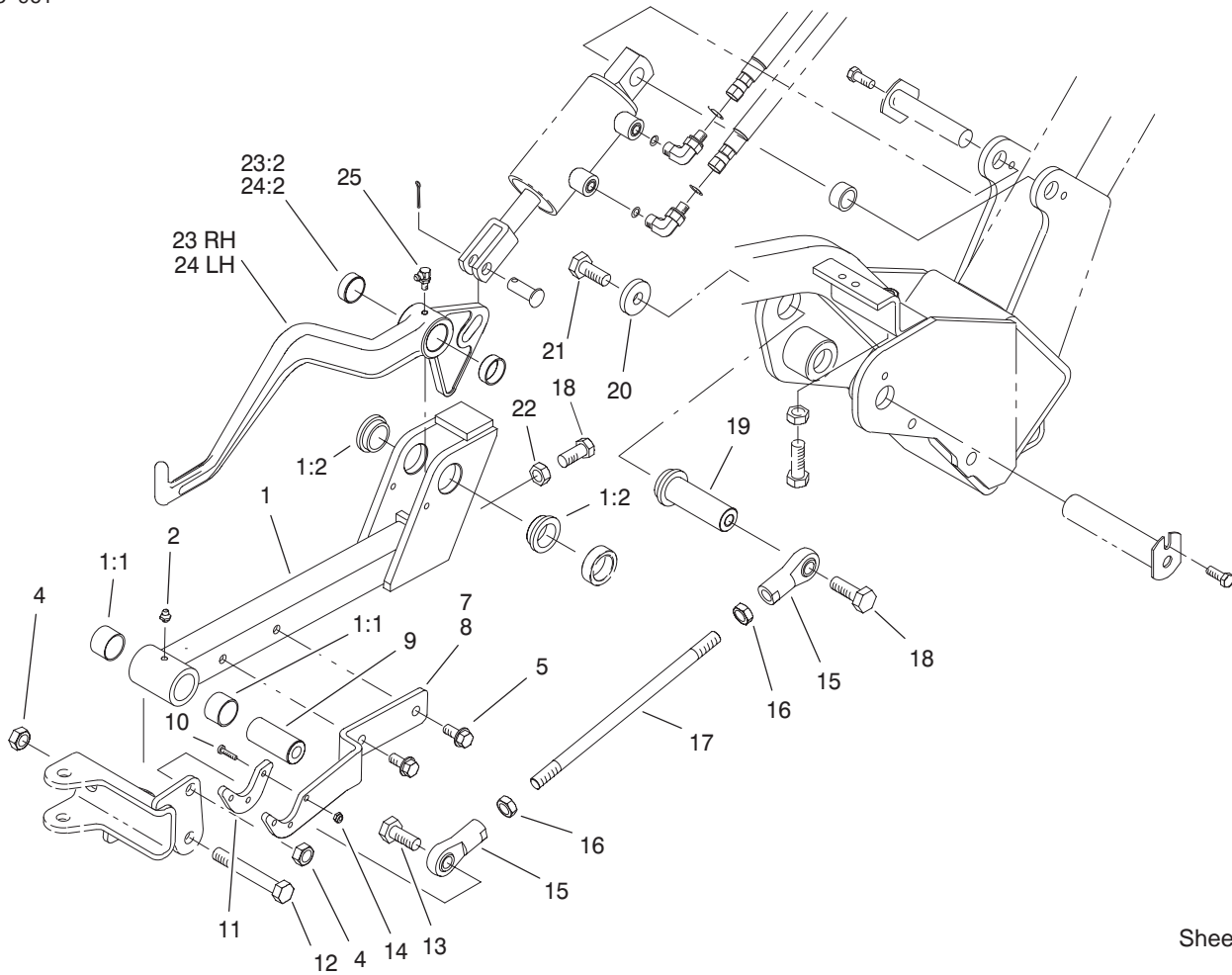
Sheet No.:2  
T-3242

## Pull Frame Assembly

Ref. No.	Part No.	Qty.	Description
1	99-4114	3	Pull Frame ASM
*1:1		1	Pull Frame ASM W / Bushings
1:1:1	98-4166	2	Bushing
1:3	94-2575	1	Decal-Adjustment
1:4	99-4118	1	Decal-Danger
2	325-13	3	Screw-HH
3	99-4183-01	2	Clevis ASM RH
4	99-4182-01	1	Clevis ASM LH
5	99-4109	3	Spacer-Pivot
8	302-5	3	Fitting-Lube
9	3296-25	3	Nut-Lock Ni
10	99-4065	6	Shaft-Roller
11	99-4210	6	Roller-Anti Scalp
12	17-2889	6	Pull Link & Bushing ASM
12:14	95-0532	1	Rubber Bushing ASM
14	256-292	6	Bushing-Flange, Nylon
15	75-5270	6	Spacer-Seat Knob
16	80-6990	6	Washer
17	3211-6	6	Screw-HH
18	3220-3	12	Nut-Jam
19	88-6870	6	Extension-Pull Arm
20	99-1460	6	Ball Joint Receiver ASM

Ref. No.	Part No.	Qty.	Description
20:1	99-1461	1	Sleeve - Ball Joint
21	94-2958	6	Ball Stud
22	99-4105	3	Basket ASM
22:2	99-4102	1	Strip-Basket
22:3	3290-382	8	Pop Rivet
23	99-4145	3	Pad-Rubber

\* Not serviced

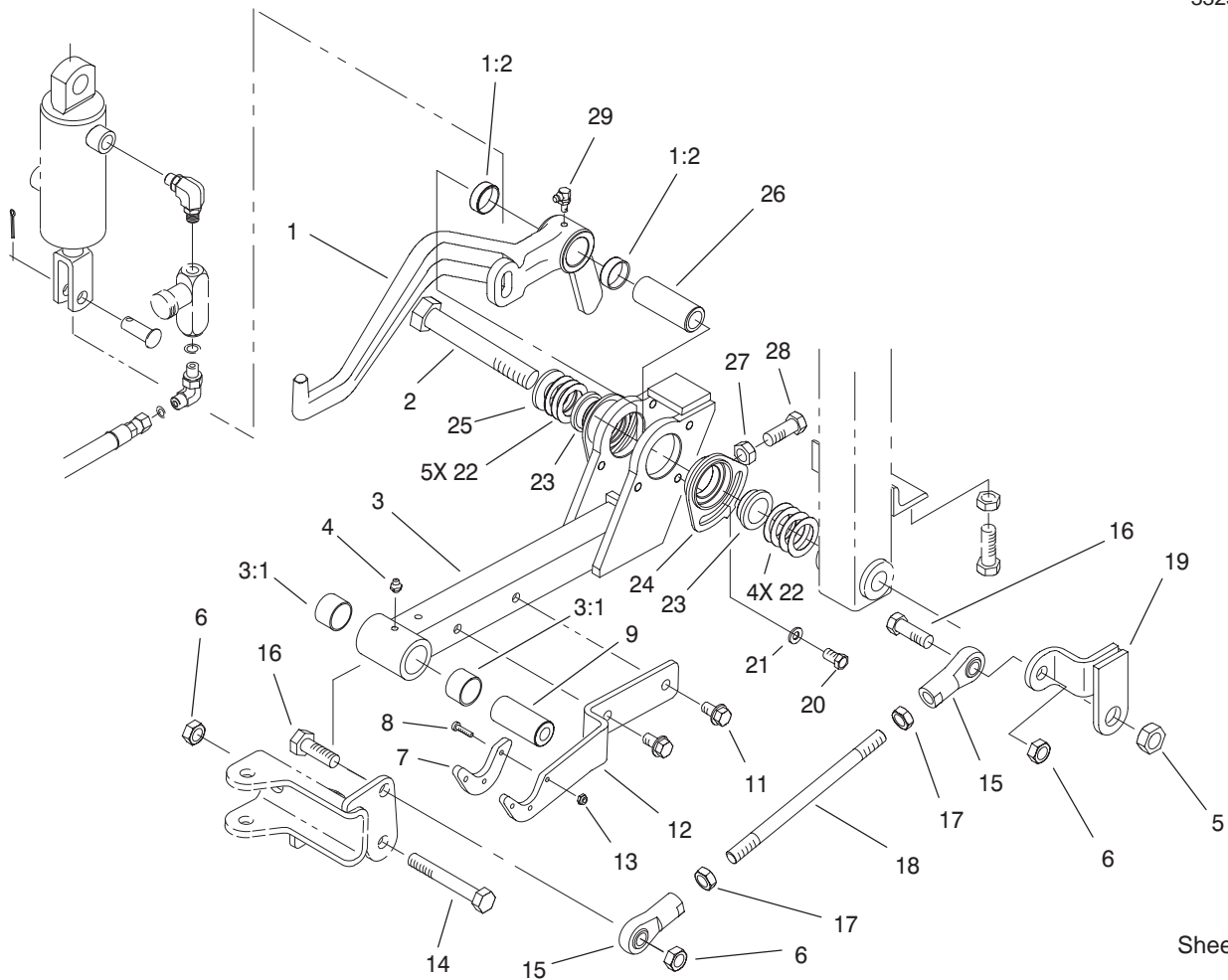


Sheet No.:3  
T-3243

## LH & RH Lift Arm Assembly (Right Side Shown)

Ref. No.	Part No.	Qty.	Description
1	99-4115	2	Front Lift Frame ASM w/Bushings
1:1	98-4166	2	Bushing
1:2	94-9610	2	Bushing - Flange
2	302-5	2	Fitting-Lube
4	3296-25	4	Nut-Lock Ni
5	32144-69	4	Hex Screw
7	99-4111-01	1	Plate-Transport (#1 & #3)
8	99-4112-01	1	Plate-Transport (#2)
9	99-4072	2	Spacer-Pull Frame
10	3250-17	6	Screw-PPH
11	99-4225	2	Pad-Wear
12	325-14	2	Screw-HH
13	325-6	2	Screw-HH
14	3296-54	6	Nut-Lock Ni
15	2411-44	4	Rod End
16	3220-5	4	Nut-Hex Jam
17	99-4096	2	Rod-Adj. Long
18	325-5	4	Screw-HH
19	99-4104	2	Stud-Extension
20	70-8040	2	Washer
21	325-4	2	Screw-HH
22	3218-5	2	Nut-Jam
23	99-4113	1	RH Lift Arm ASM w/Bushings

Ref. No.	Part No.	Qty.	Description
23:2	92-8995	2	Bushing
24	99-4127	1	Lift Arm-LH ASM w/Bushings
24:2	92-8995	2	Bushing
25	302-60	2	Fitting-Lube



Sheet No.:4  
T-3244

## Center Lift Arm Assembly

Ref. No.	Part No.	Qty.	Description
1	99-4126	1	Lift Arm-Center ASM w/Bushings
1:2	92-8995	2	Bushing
2	327-19	1	Screw-HH
3	99-4116	1	Lift Frame ASM Rear w/Bushings
3:1	98-4166	2	Bushing
4	302-5	1	Fitting-Lube
5	3296-53	1	Nut-Lock Ni
6	3296-25	3	Nut-Lock Ni
7	99-4225	1	Pad-Wear
8	3250-17	3	Screw-PPH
9	99-4072	1	Spacer-Pull Frame
11	32144-69	2	Hex Screw
12	99-4111-01	1	Plate-Transport (#1 & #3)
13	3296-54	3	Nut-Lock Ni
14	325-14	1	Screw-HH
15	2411-44	2	Rod End
16	325-6	2	Screw-HH
17	3220-5	2	Nut-Hex Jam
18	99-4097	1	Rod-Adj. Short
19	99-4093	1	Bracket ASM,Welded
20	33114-016	2	Screw-HH
21	3256-74	2	Washer-Flat
22	63-2290	9	Washer-Thrust

Ref. No.	Part No.	Qty.	Description
23	98-2197	2	Bushing - Flange
24	98-4618	2	Bushing-Eccentric
25	69-8940	1	Washer
26	94-8199	1	Tube - Pivot
27	3218-5	1	Nut-Jam
28	325-5	1	Screw-HH
29	302-60	1	Fitting-Lube





