

Parts Catalog

Slicer Seeder 36 Inch

Model No. 142-2038—Serial No. 406294345 and Up



Ordering Replacement Parts

To order replacement parts, please supply the part number, the quantity, and the description of each part desired.

Understanding Reference Numbers

Each identified part in an illustration has a reference number. The reference number for a part also appears in the parts list, along with other information about the part.

This catalog uses two special reference number formats, one to indicate parts in a service assembly and another to indicate the quantity of a given part in an illustration.

Service Assembly Reference Numbers

Parts in service assemblies have reference numbers in the form a:b. The a represents the reference number of the entire service assembly and the b represents a sequential number unique to each part within the service assembly.

For example, a wheel assembly might be identified by reference number 6, the tire by 6:1, the valve by 6:2, and the wheel by 6:3. When you order the assembly identified by reference number 6, you receive all parts identified by reference numbers 6:1, 6:2, and 6:3. However, you may also order any part individually. Reference numbers of this type appear in illustration and in parts lists.

Reference Numbers Indicating Quantity

In an illustration, if a reference number indicates more than one part, the reference number has the form nX y. The n represents the quantity of the part, the X is the multiplication symbol, and the y represents the reference number.

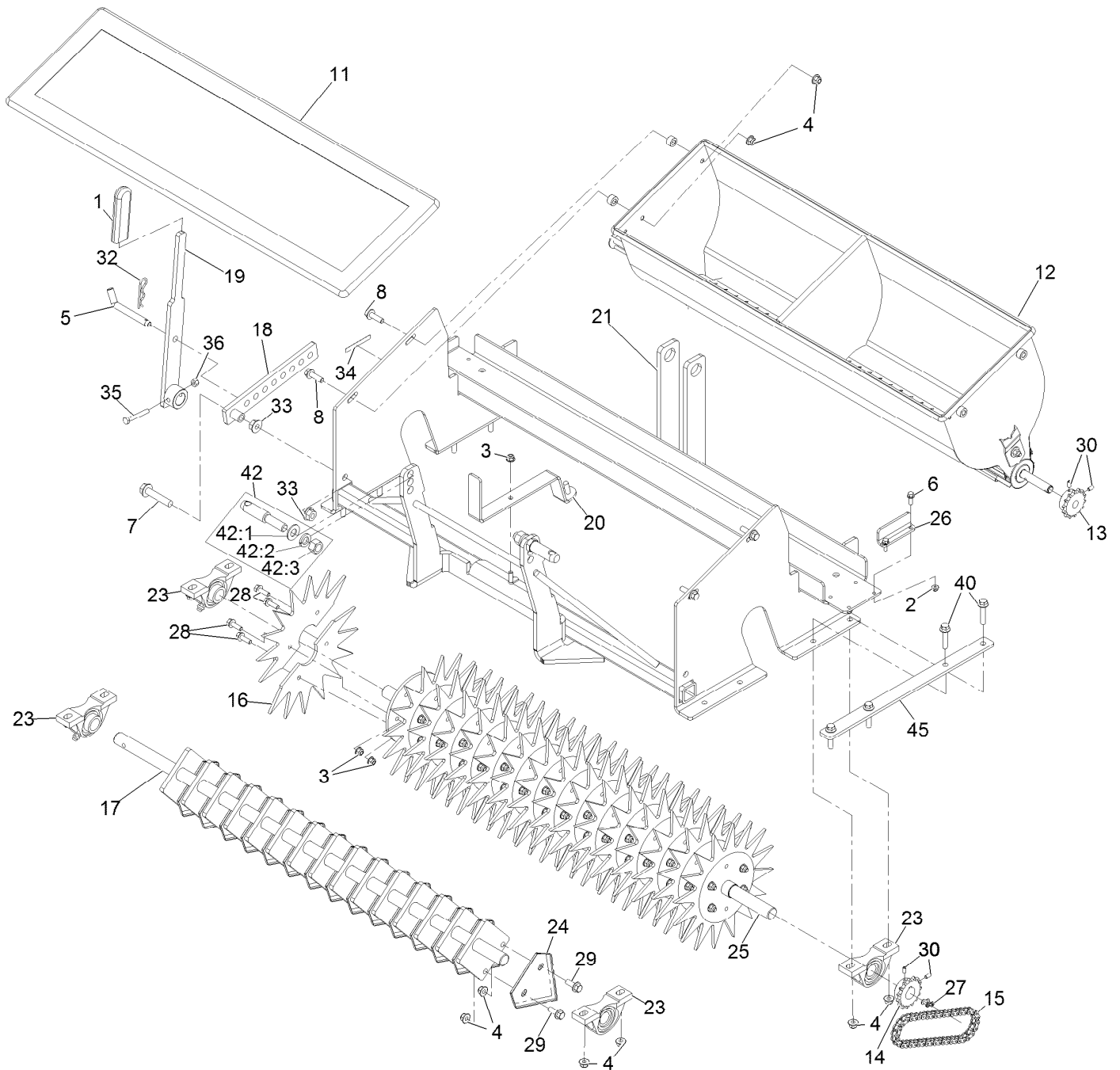
For example, in an illustration, the reference number 2X 37 means that two of the parts identified by reference number 37 are indicated.

Contents

Slicer Seeder Attachment Assembly 4

Seeder Hopper Assembly 6

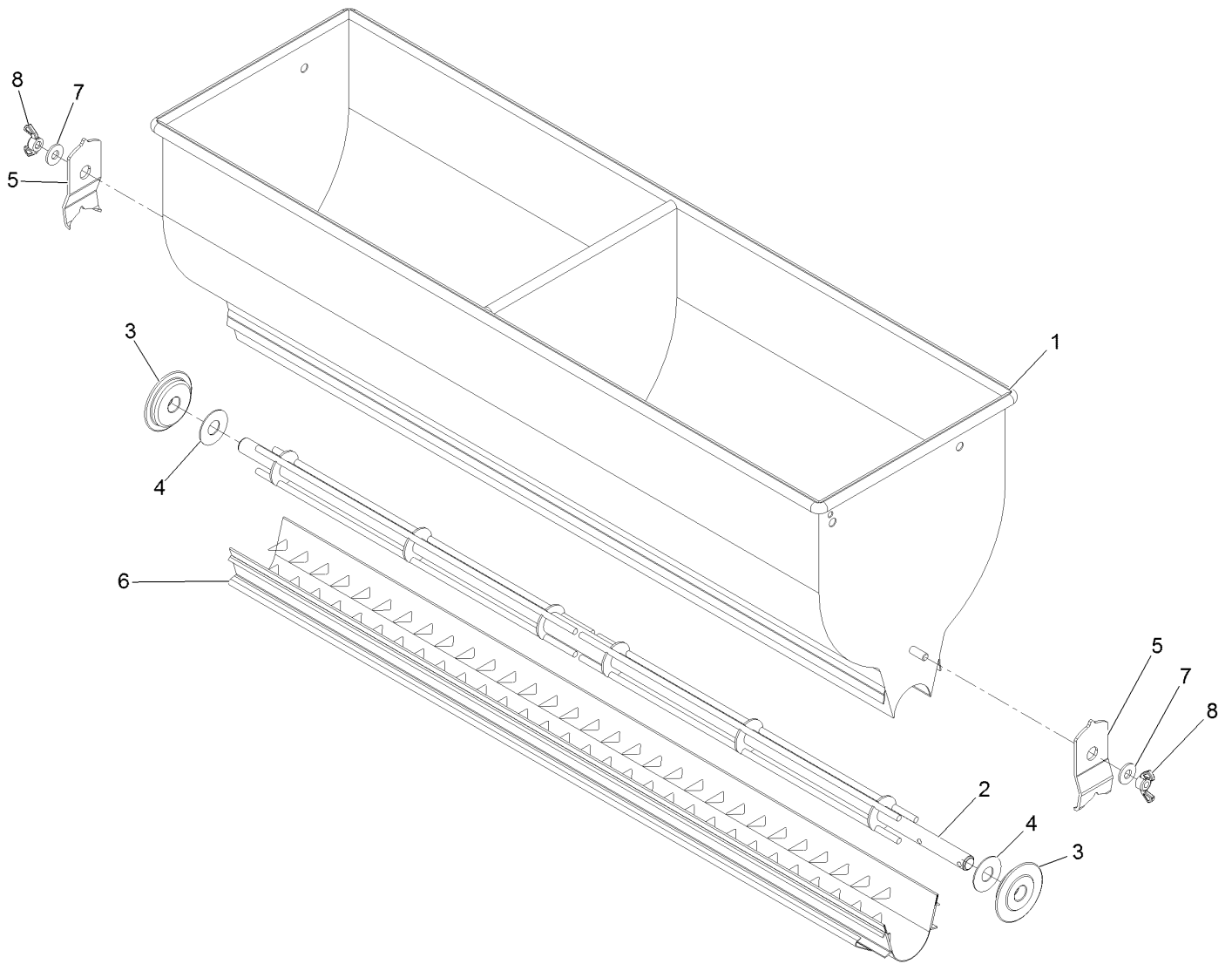
Slicer Seeder Attachment Assembly



Slicer Seeder Attachment Assembly (continued)

<i>Ref.</i>	<i>Part Number</i>	<i>Qty.</i>	<i>Description</i>	<i>Ref.</i>	<i>Part Number</i>	<i>Qty.</i>	<i>Description</i>
1	1-633268	1	Grip-Lever	23	135-9379	4	Bearing-Pillow Block
2	104-7201	4	Nut-Nyloc 1/4-20 Flg	24	135-9405	15	Knife-Slicing 4"
3	104-8300	65	Nut-Nyloc 5/16-18 Flg	25	142-0263-05	1	Disc-Slit Seeder [blk-Txt]
4	104-8301	42	Nut-Nyloc 3/8-16 Flg	26	142-1650-05	2	Bracket-Weight [blk-Txt]
5	135-9413	1	1/2 X 4-3/4 Bent Pin	27	2710-11	1	Link-Chain
6	120-9678	4	Screw-HHF	28	3234-29	64	Screw-HH Flg 5/16-18 X 1
7	127-7444	1	Screw-HHF	29	3234-42	30	Screw HHF 3/8-16 X 1
8	119-4061	4	Screw-HHF	30	3245-9	4	Screw-Set, HSH
11	135-8482	1	Slit Seeder Drop Cover	32	3290-355	1	Pin-Hair
12	135-8544	1	Hopper-36 In. Seeder	33	32128-49	2	Nut-Whizlock 1/2-13
13	135-8546	1	Sprocket-15T	34	133-8061	1	Decal-Warning
14	135-8547	1	Sprocket-15T	35	322-11	1	Screw-HH
15	135-8549	1	Chain-Roller	36	3296-29	1	Nut-Lock, NI
16	135-9312-05	32	Star, Slit Seeder	40	3234-19	8	Screw-HHF
17	135-9322-05	1	Shaft-Sq Plate [blk-Txt]	42	142-3075	2	Pin-Lift
18	135-9325-05	1	Arm-Ctrl. Seeder [blk-Txt]	42:1	3256-27	1	Washer-Flat
19	135-9327-05	1	Handle-Slit Seeder [blk-Txt]	42:2	3253-8	1	Washer-Lock 5/8
20	135-9329-05	1	Handle-Gate [blk-Txt]	42:3	3219-6	1	Nut-Hex 5/8-18
21	135-9349-05	1	Frame-Seeder, Slit [blk-Txt]	45	142-3007-05	2	Plate-Doubler

Seeder Hopper Assembly



Seeder Hopper Assembly (continued)

<i>Ref.</i>	<i>Part Number</i>	<i>Qty.</i>	<i>Description</i>	<i>Ref.</i>	<i>Part Number</i>	<i>Qty.</i>	<i>Description</i>
1	135-7033	1	Hopper-36 In. Seeder	5	135-7039	2	Retainer-End Bearing
2	135-7034	1	Rotor-Bar 36 In. Seeder	6	135-7484	1	Slide-Metering Gate
3	135-7035	2	Bearing-End Hopper	7	3256-3	2	Washer-5/16 Std
4	135-7036	2	Washer	8	1-513959	2	Wingnut-Nylock

