

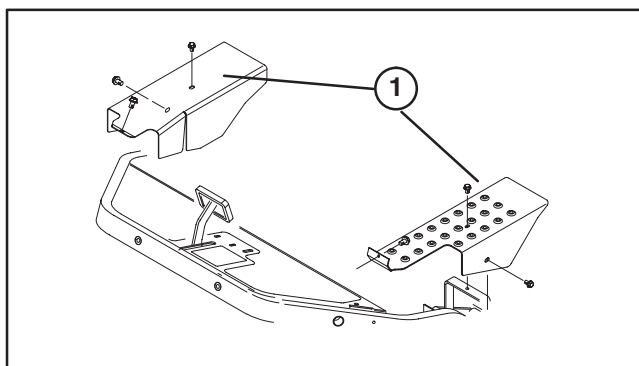


PART NO. 99-4239

INSTALLATION  
INSTRUCTIONS

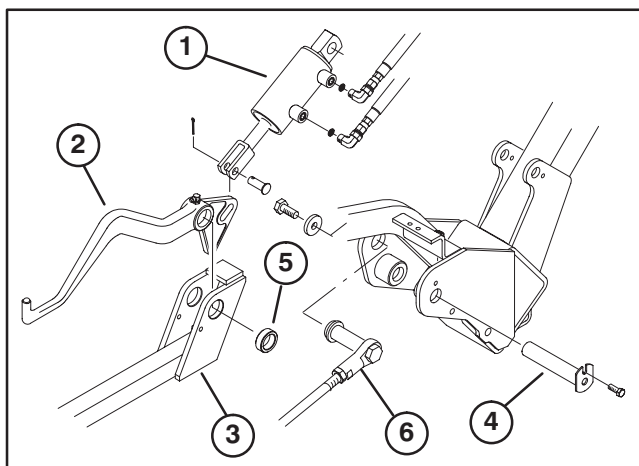
## SUSPENSION UPDATE KIT GREENSMMASTER 3200

1. Park the machine on a level surface, lower the cutting units, stop engine and set parking brake.
2. Remove baskets from cutting unit carrier frames.
3. Disconnect drive motors from cutting units.
4. Disconnect pull arm from carrier frame.
5. Unhook cutting unit lift rollers from lift arms and slide cutting units out from under carrier frames.
6. Remove fasteners securing carrier frame pull arms to cutting units.
7. To ease installation of kit, it is recommended that right and left wheel shields (Fig. 1) be removed from traction unit assemble.



**Figure 1**  
1. Wheel shields

8. Remove cotter pins and clevis pins securing hydraulic lift cylinders to lift arms. Retain cotter pins and clevis pins (Fig. 2).



**Figure 2**

- |                       |                                       |
|-----------------------|---------------------------------------|
| 1. Hydraulic cylinder | 4. Pivot pin (carrier frame/lift arm) |
| 2. Lift arm           | 5. Spacer (carrier frame/lift arm)    |
| 3. Carrier frame      | 6. Extension stud & adjusting rod     |

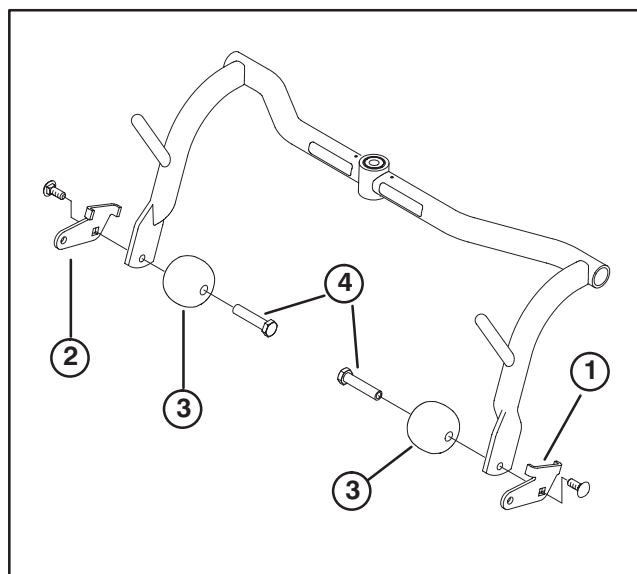
9. Remove capscrews, pivot pins and spacers securing front lift arms, and carrier frames to traction unit frame (Fig. 2). Discard lift arms but retain carrier frames, capscrews, pivot pins and spacers.

10. Remove grease fitting from top of each front lift arm and install in new lift arms.

11. Secure each new front lift arm and carrier frame to traction unit frame with a capscrew, pivot pin and spacer previously removed (Fig. 2).

**NOTE: Steps 12 thru 14 pertain only to cutting units equipped with groomers. If cutting units are not equipped with groomers, proceed to step 15.**

12. Mount appropriate link bracket (R.H. or L.H.) and an anti-scalp roller to end of each **front** carrier frame with a roller shaft and carriage screw. Position brackets as shown in figure 3.

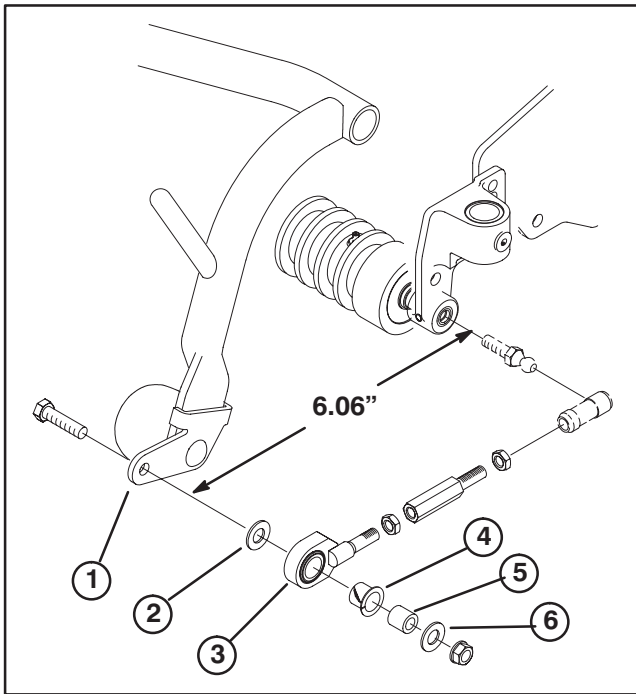


**Figure 3**

1. Link bracket - L.H.
2. Link bracket - R.H.
3. Roller
4. Roller shaft

13. Mount a pull link assembly to outside of each link bracket with a capscrew, flat washer, nylon bushing, spacer, washer and lock nut. Position, assemble and adjust components to length shown in figure 4. Make sure nylon bushing is in pull link.

14. Adjust pull links until there is 1/4" to 3/8" clearance between the lip of the basket and the reel blades. Make sure the basket lips are equidistant from the reel blades all the way across the reel blades.

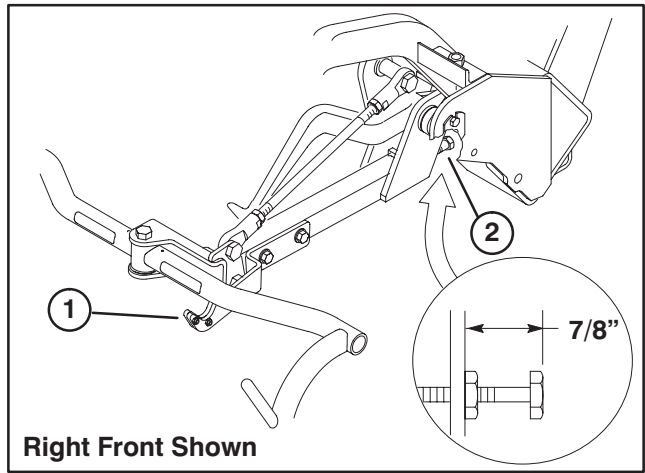


**Figure 4**

- |                        |                   |
|------------------------|-------------------|
| 1. Link bracket – L.H. | 4. Nylon bushing  |
| 2. Flat washer         | 5. Spacer         |
| 3. Pull link assembly  | 6. Washer (thick) |

**15.** Check transport plate (Fig. 5) operation and adjust, if required, as follows:

A. Verify that the distance from the top of the carrier frame adjusting screw (Fig. 5) and back of carrier frame is 7/8".



**Right Front Shown**

**Figure 5**

1. Transport plate    2. Adjusting screw

B. Raise cutting units to transport position.

C. Check to assure each carrier frame is resting in center of cradle on transport plate.

D. If carrier frame is not resting in center of cradle, on transport plate, loosen jam nut on carrier frame adjusting screw (Fig. 5) and rotate screw out ward until carrier frame rests on transport plate when in transport position. Tighten jam nut after adjustment is attained.

**16.** Grease all fittings with general purpose lithium based grease.

**17.** Re-install right and left wheel shields (Fig. 1) if removed from traction unit.