



50in Bagging Enhancement Kit

TimeCutter® Riding Mower

Model No. 139-7459

Installation Instructions

⚠ WARNING

CALIFORNIA Proposition 65 Warning

Use of this product may cause exposure to chemicals known to the State of California to cause cancer, birth defects, or other reproductive harm.

Installation

Determine the left and right sides of the machine from the normal operating position.

Preparing the Machine

1. Park the machine on a level surface.
2. Disengage the blade-control switch.
3. Move the motion-control levers outward to the PARK position.
4. Shut off the engine and remove the key.

Installing the Kit

Install the left skirt, right skirt, and 2 plates to the mower deck using 10 bolts and 10 nuts.

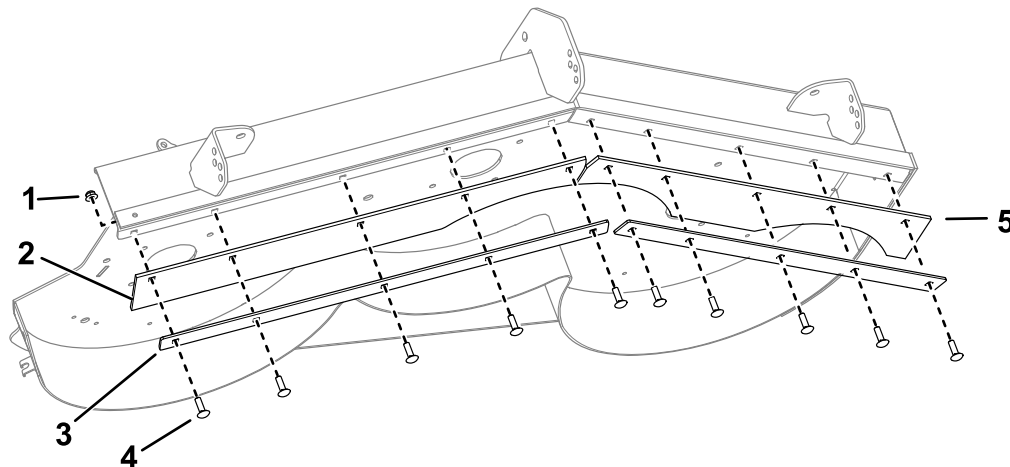


Figure 1

g907391

- | | | |
|----------------|--------------|---------------|
| 1. Nut (10) | 3. Plate (2) | 5. Left skirt |
| 2. Right skirt | 4. Bolt (10) | |





Count on it.