



Suspension Update Kit

for Greensmaster® 3200

Part No. 99-4239

Parts Catalog

Ordering Replacement Parts

To order replacement parts, please supply: the part number, the quantity, and the description of each part desired.

Understanding Reference Numbers

Each identified part in an illustration has a reference number. The reference number for a part also appears in the parts list, along with other information about the part.

This catalog uses two special reference number formats, one to indicate parts in a service assembly and another to indicate the quantity of a given part in an illustration.

Service Assembly Reference Numbers

Parts in service assemblies have reference numbers in the form **a:b**. The **a** represents the reference number of the entire service assembly and the **b** represents a sequential number unique to each part within the service assembly.

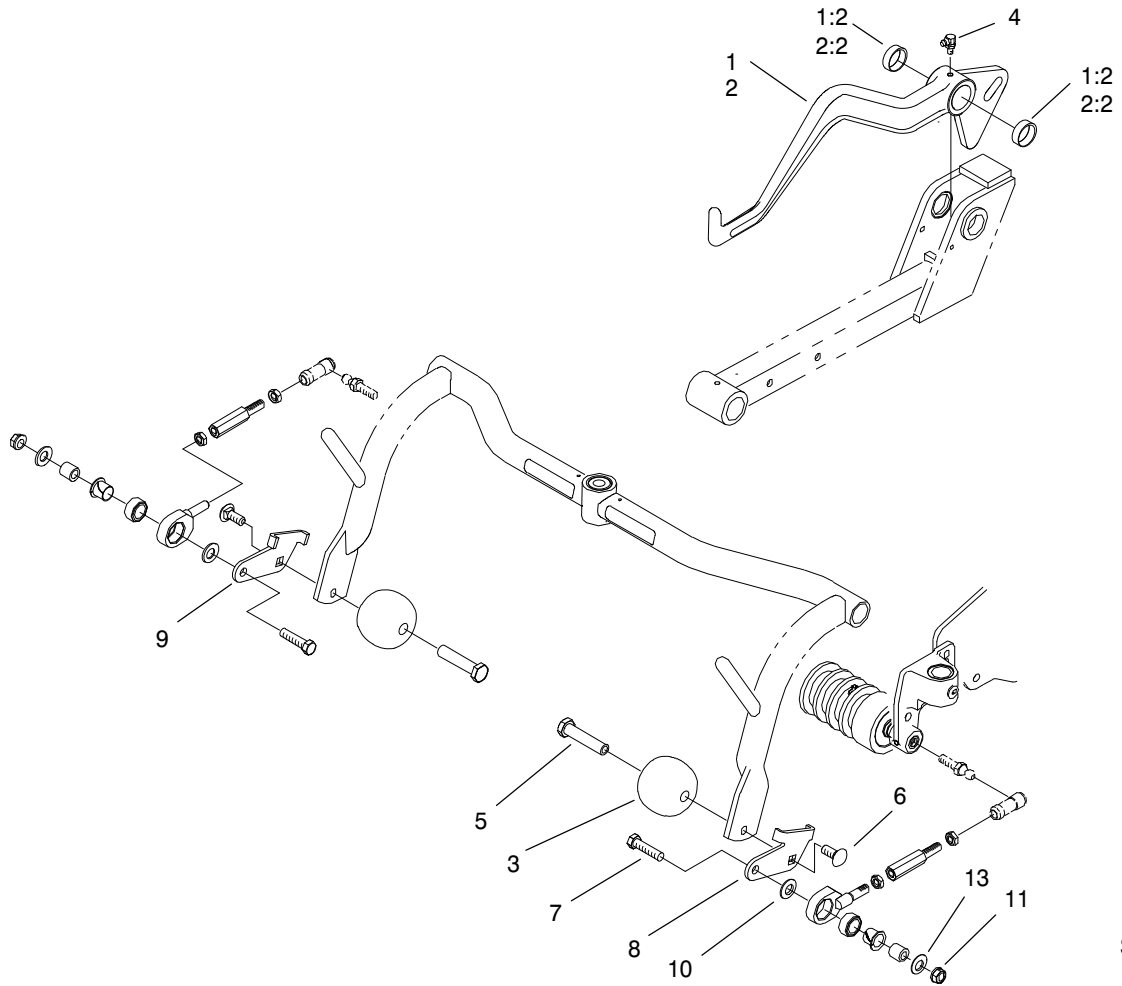
For example, a wheel assembly might be identified by reference number **6**, the tire by **6:1**, the valve by **6:2**, and the wheel by **6:3**. When you order the assembly identified by reference number **6**, you receive all parts identified by reference numbers **6:1**, **6:2**, and **6:3**. However, you may also order any part individually.

Reference numbers of this type appear in illustrations and in part lists.

Reference Numbers Indicating Quantity

In an illustration, if a reference number indicates more than one part, the reference number has the form **nX y**. The **n** represents the quantity of the part, the **X** is the multiplication symbol, and the **y** represents the reference number.

For example, in an illustration, the reference number **2X 37** means that two of the parts identified by reference number **37** are indicated.



Sheet No.: 0
T-3323

Pull Frame Assembly

Ref. No.	Part No.	Qty.	Description
1	99-4213	1	Lift Arm-RH ASM w/Bushing
1:2	92-8995	2	Bushing
2	99-4212	1	Lift Arm-LH ASM w/Bushing
2:2	92-8995	2	Bushing
3	99-4210	6	Roller-Anti Scalp
4	302-60	2	Fitting-Lube
5	99-4209	4	Shaft-Roller
6	3231-2	4	Screw-CARR
7	323-8	4	Screw-HH
8	99-4149	2	Bracket-Link, LH
9	99-4148	2	Bracket-Link, RH
10	3256-4	4	Washer-Flat
11	3296-39	4	Nut-Lock NI
13	80-6990	4	Washer-Hardened

Ref. No.	Part No.	Qty.	Description