



Light Kit

Proline Commercial Walk-Behind Mower with 60in Floating Cutting Unit

Model No. 139-5595

Installation Instructions

Note: Determine the left and right sides of the machine from the normal operating position.

Installation

Loose Parts

Use the chart below to verify that all parts have been shipped.

Procedure	Description	Qty.	Use
1	No parts required	–	Prepare the machine.
2	LED light Light bracket Friction washer Carriage bolt (5/16 x 7/8 inch) Flange nut (5/16 inch) Light clamp Locknut (1/4 inch)	2 1 2 2 2 2 4	Install the lights.
3	Wire harness Cable ties Toggle switch	1 6 1	Route the wire harness.

1

Preparing the Machine

No Parts Required

Procedure

1. Park the machine on a level surface, disengage the PTO, and engage the parking brake.
2. Shut off the engine, remove the key, and wait for all moving parts to stop before leaving the operating position.
3. Disconnect the battery; refer to your *Operator's Manual*.

2

Installing the Lights

Parts needed for this procedure:

2	LED light
1	Light bracket
2	Friction washer
2	Carriage bolt (5/16 x 7/8 inch)
2	Flange nut (5/16 inch)
2	Light clamp
4	Locknut (1/4 inch)



Procedure

1. Secure the 2 LED lights to the light bracket using 2 carriage bolts (5/16 x 7/8 inch), 2 friction washers, and 2 flange nuts (5/16 inch) as shown in [Figure 1](#).

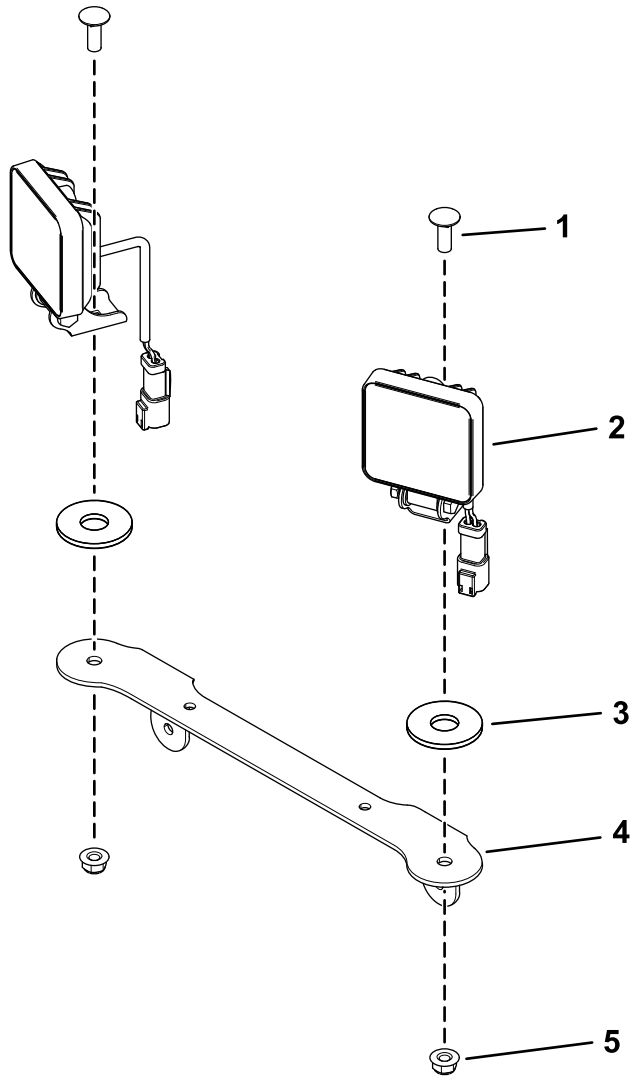
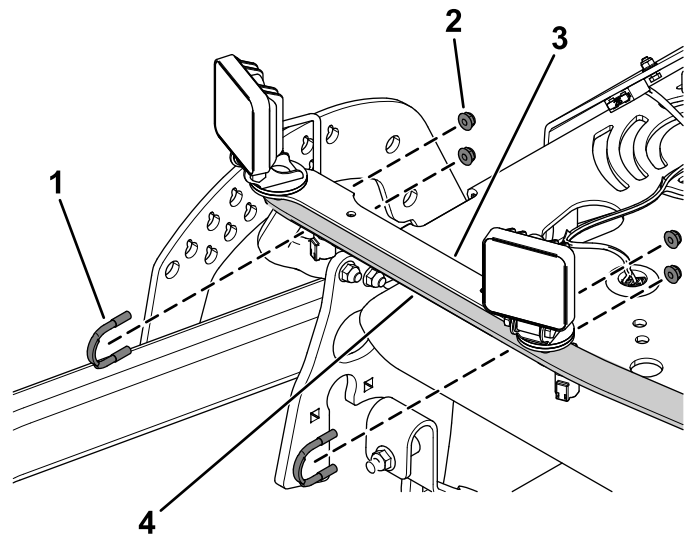


Figure 1

g307082

1. Carriage bolt (5/16 x 7/8 inch)
2. LED light
3. Friction washer
4. Light bracket
5. Flange nut (5/16 inch)

2. Secure the light assembly to the muffler guard using 2 light clamps and 4 locknuts (1/4 inch) as shown in [Figure 2](#).



g307081

Figure 2

1. Light clamp
2. Locknut (1/4 inch)
3. Light assembly
4. Muffler guard

3

Routing the Wire Harness

Parts needed for this procedure:

1	Wire harness
6	Cable ties
1	Toggle switch

Procedure

1. Plug the 2 connectors at the front of the machine into the LED lights (Figure 3).

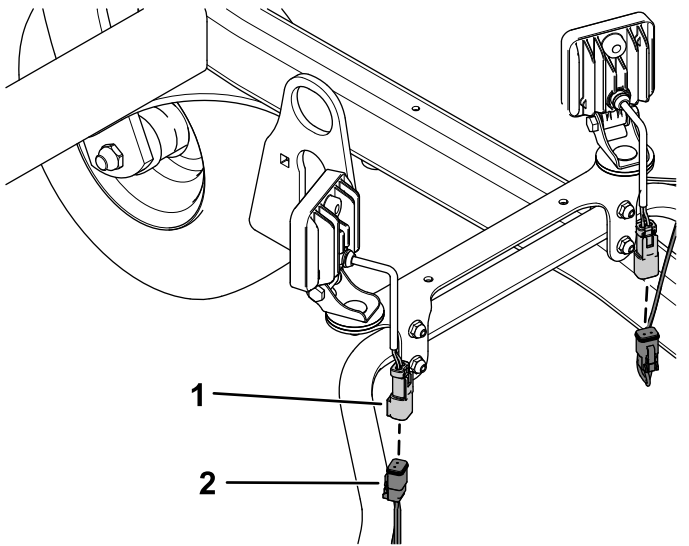


Figure 3

1. Light connector
2. Harness connector

2. Secure the wire harness to the light bracket using the 2 push-mount fasteners on the wire harness (Figure 4).

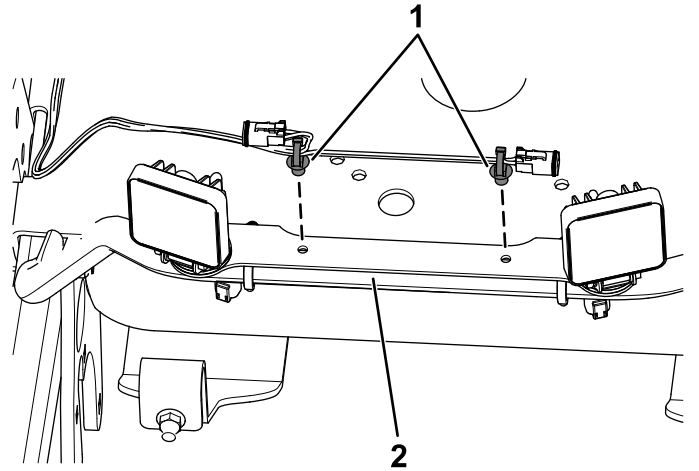


Figure 4

1. Push-mount fastener
2. Light bracket

3. Route the wire harness along the right side of the machine as shown in [Figure 5](#).

4. Secure the wire harness to the machine using the cable ties ([Figure 5](#)).

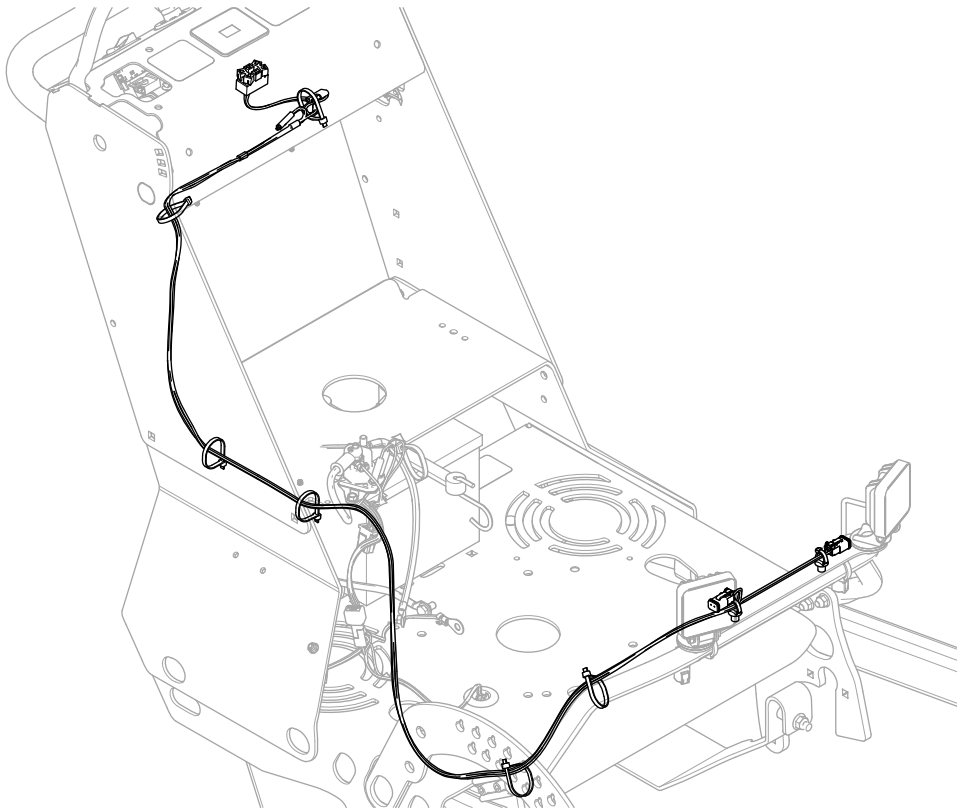


Figure 5

g307416

5. Plug the connector into the toggle-switch connector (Figure 6).

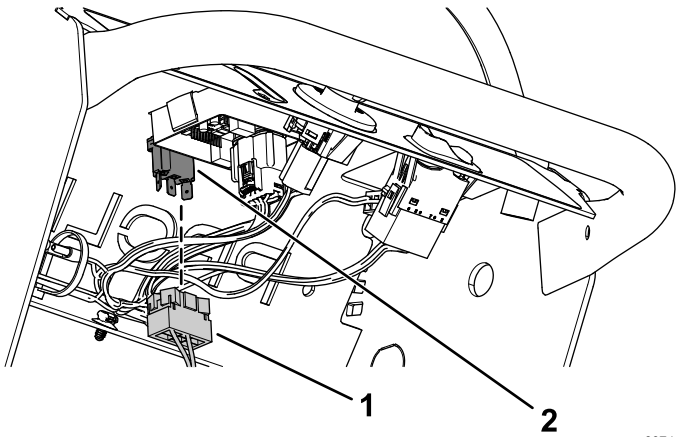


Figure 6

g307412

1. Harness connector
2. Toggle-switch connector

6. Drill a hole (12 mm or 1/2 inch) in front of the hour meter for the toggle switch (Figure 7).

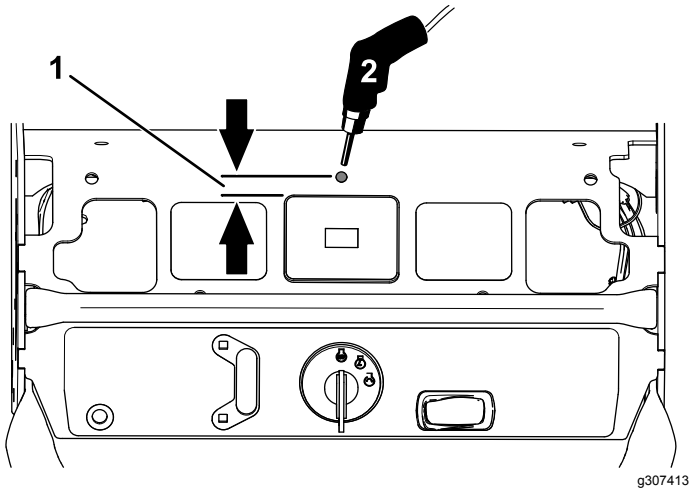


Figure 7

g307413

1. Measure 12.7 mm (1/2 inch) from the hour meter to drill the hole.
2. Drill a hole (12 mm or 1/2 inch) here.

7. From the top of the threads on the toggle switch, set the depth of the bottom hex nut at 7.9 mm (5/16 inch) as shown in Figure 8.

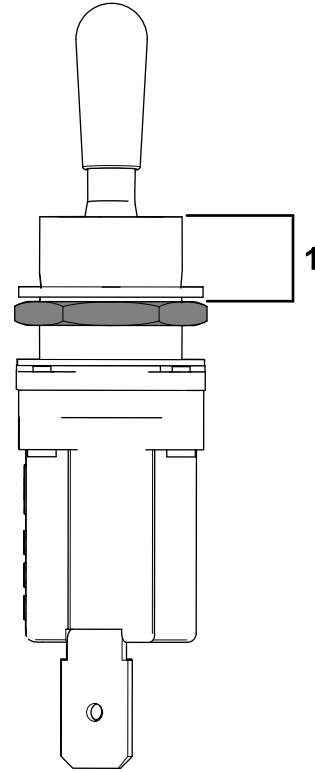


Figure 8

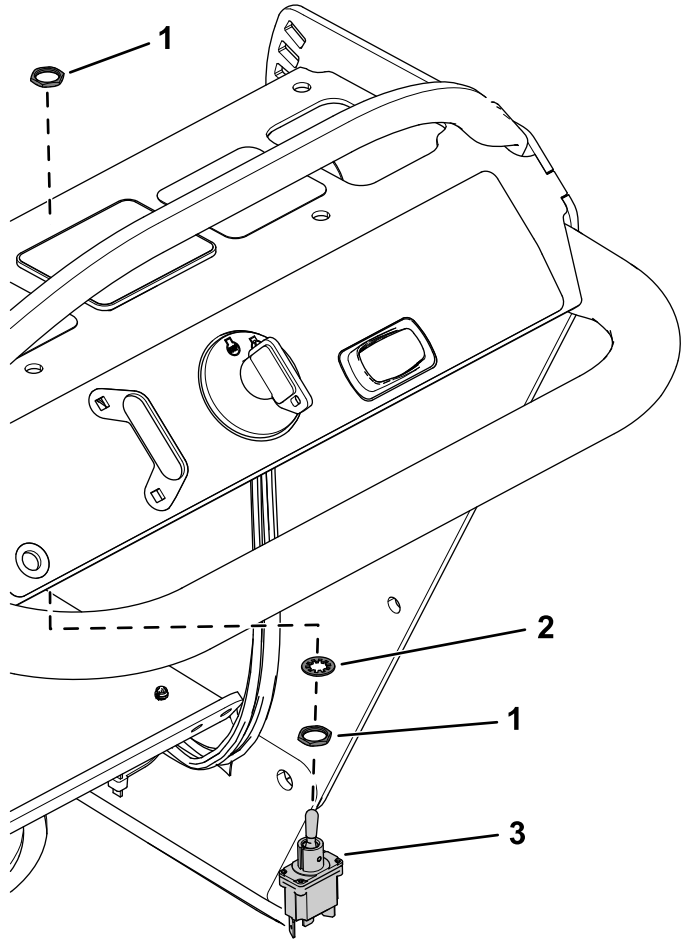
g307440

1. 7.9 mm (5/16 inch)

8. Secure the toggle switch in the opening using the 2 hex nuts and 1 lock washer (Figure 9).

9. Connect the battery; refer to your *Operator's Manual*.

Note: Do not use the key-tab washer.



g307441

Figure 9

- 1. Hex nut
- 2. Lock washer

- 3. Toggle switch

Notes:



Count on it.