

# Under Toe Board Weight Kit

## Zero-Turn-Radius Riding Mower

Model No. 140-4958

### Installation Instructions

**Important:** If you are installing the Under Toe Board Weight Kit onto a machine that already has an under toe board weight installed, use Part No. 321-10 (hex-head bolt 1/4 x 1-3/4 inches) to ensure that there is adequate bolt length.

## Installation

### Loose Parts

Use the chart below to verify that all parts have been shipped.

Description	Qty.	Use
No parts required	—	Prepare the machine.
Toe-board weight	1	Install the kit.
Hex-head bolt (1/4 x 1-1/4 inches)	4	
Flat washer	4	
Locknut (1/4 inch)	4	

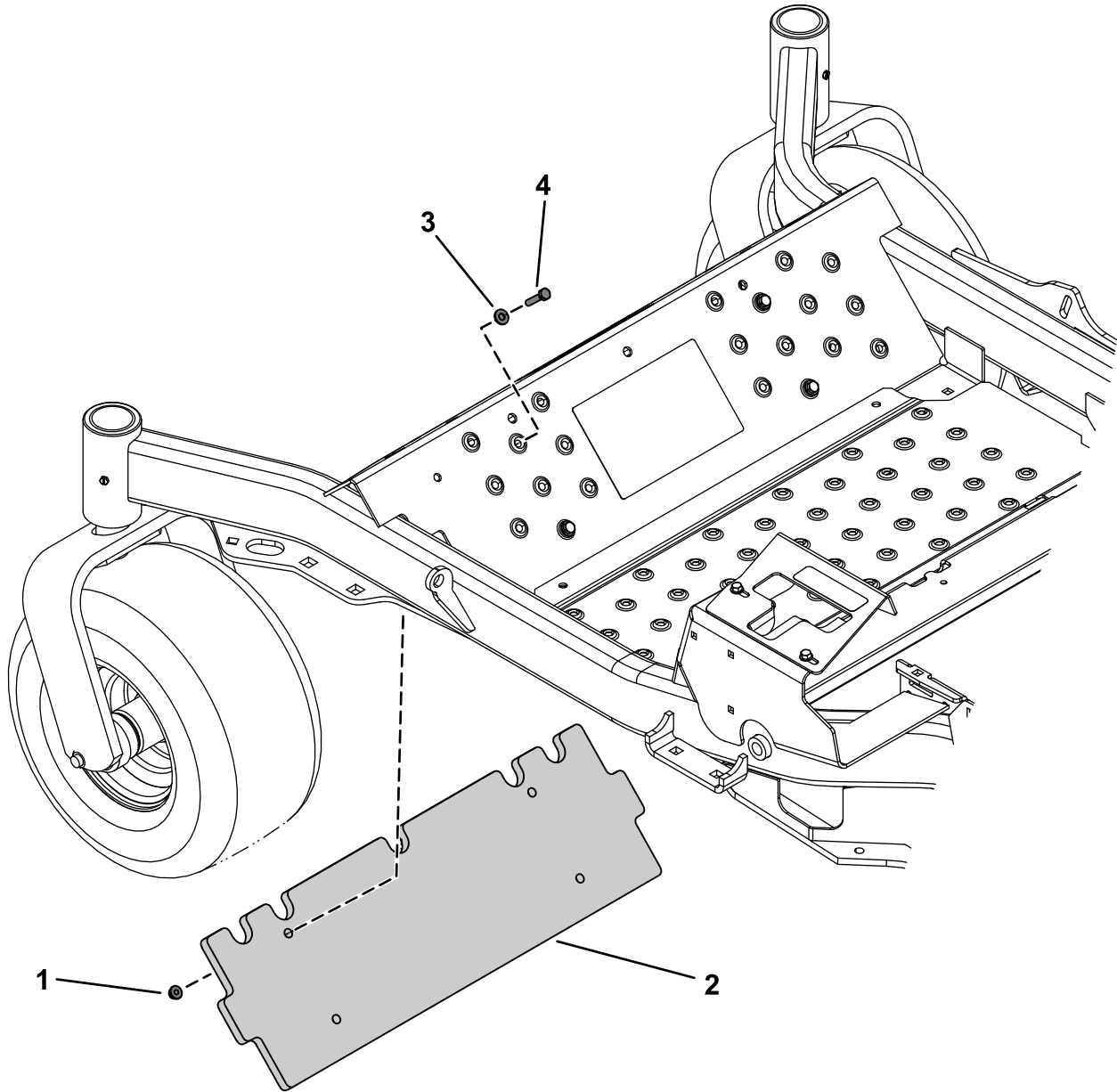
## Preparing the Machine

1. Shut off the engine, remove the key, and wait for all moving parts to stop before leaving the operating position.
2. Disengage the PTO, move the motion-control levers to the NEUTRAL-LOCK position, and engage the parking brake.



# Installing the Kit

Secure the toe-board weight to the machine using the 4 hex-head bolts (1/4 x 1-1/4 inches), 4 flat washers, and 4 locknuts (1/4 inch) as shown in [Figure 1](#).



g306707

**Figure 1**

- |                       |                                       |
|-----------------------|---------------------------------------|
| 1. Locknut (1/4 inch) | 3. Flat washer                        |
| 2. Toe-board weight   | 4. Hex-head bolt (1/4 x 1-1/4 inches) |