



## Tow Behind Trailer

### For Trans Pro 100

Model No. 04240—200000001 and Up

## Parts Catalog

---

### Ordering Replacement Parts

To order replacement parts, please supply: the part number, the quantity, and the description of each part desired.

### Understanding Reference Numbers

Each identified part in an illustration has a reference number. The reference number for a part also appears in the parts list, along with other information about the part.

This catalog uses two special reference number formats, one to indicate parts in a service assembly and another to indicate the quantity of a given part in an illustration.

### Service Assembly Reference Numbers

Parts in service assemblies have reference numbers in the form **a:b**. The **a** represents the reference number of the entire service assembly and the **b** represents a sequential number unique to each part within the service assembly.

For example, a wheel assembly might be identified by reference number **6**, the tire by **6:1**, the valve by **6:2**, and the wheel by **6:3**. When you order the assembly identified by reference number **6**, you receive all parts identified by reference numbers **6:1**, **6:2**, and **6:3**. However, you may also order any part individually.

Reference numbers of this type appear in illustrations and in part lists.

### Reference Numbers Indicating Quantity

In an illustration, if a reference number indicates more than one part, the reference number has the form **nX y**. The **n** represents the quantity of the part, the **X** is the multiplication symbol, and the **y** represents the reference number.

For example, in an illustration, the reference number **2X 37** means that two of the parts identified by reference number **37** are indicated.

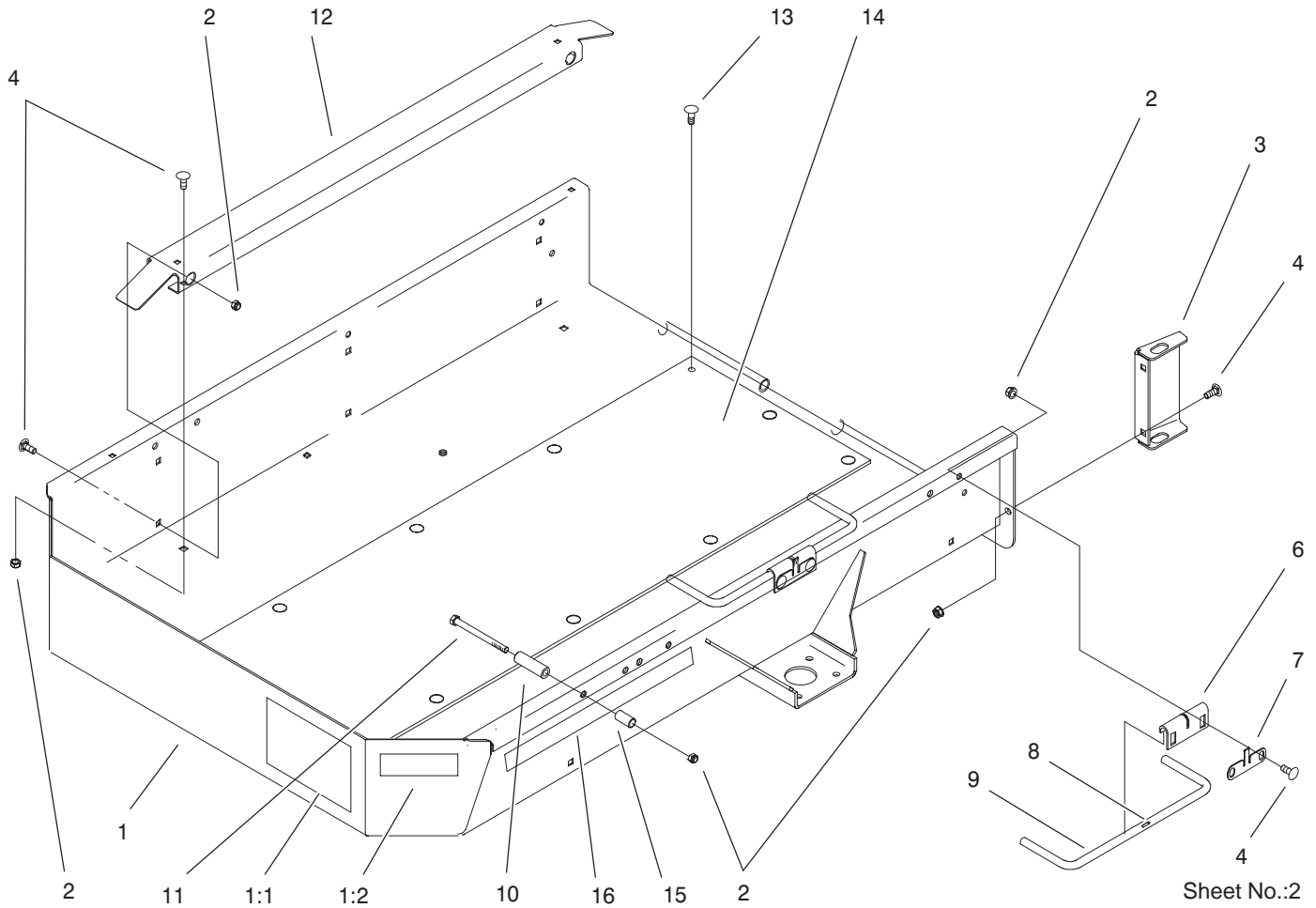
## Contents

Description	Page	Description	Page
Trailer Bed Assembly .....	3	Ramp Assembly .....	5
Tounge Assembly .....	4	Hub and Wheel Assembly .....	6

## Part Description Abbreviations

Part descriptions in this catalog may include the following abbreviations.

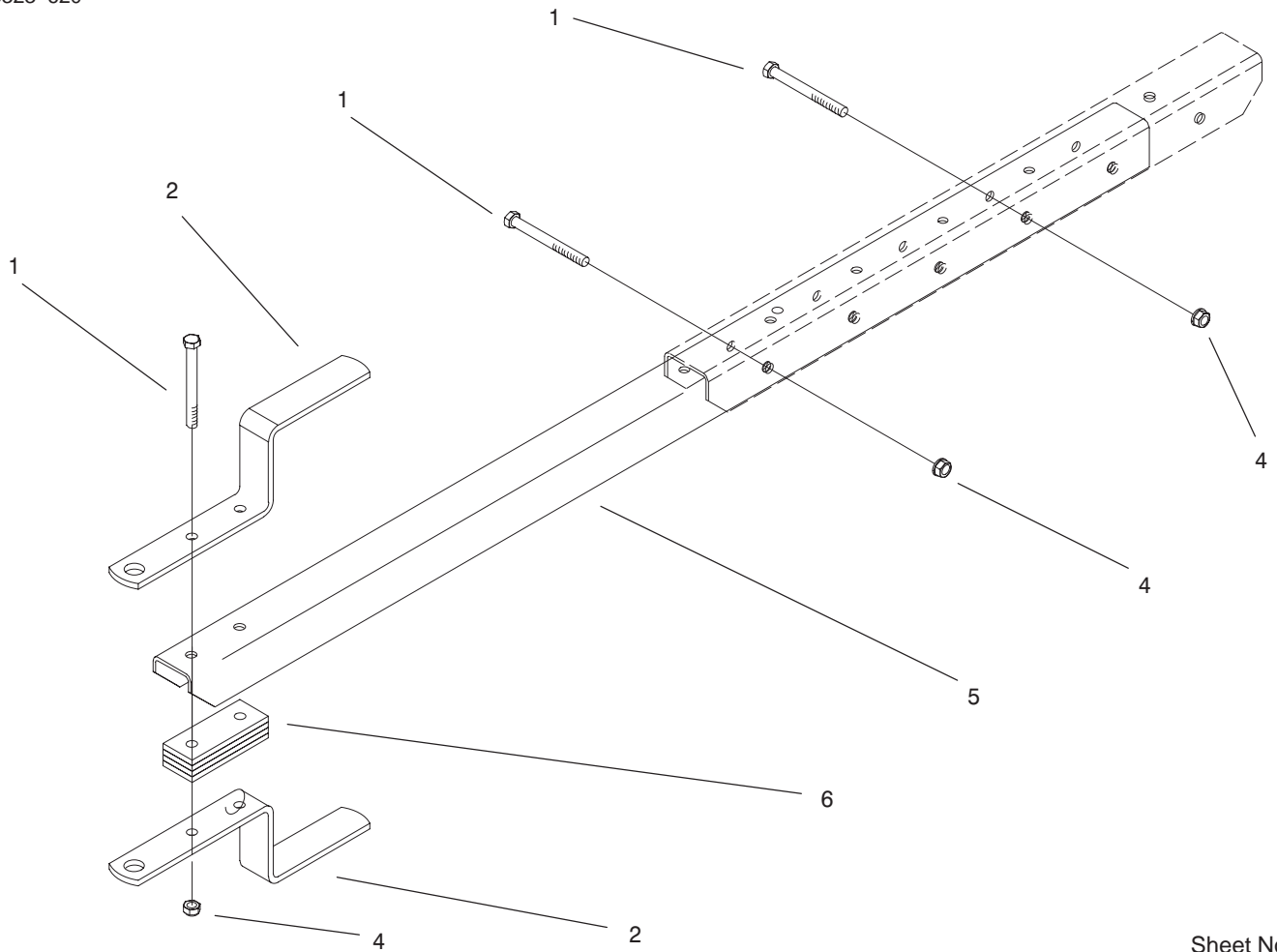
Abbreviation	Meaning	Abbreviation	Meaning
AR .....	as required	INC .....	incorporated
ASM .....	assembly	LH .....	left hand
CARR .....	carriage	NI .....	nylon insert
DEG .....	degrees	PPH .....	Phillips pan head
FH .....	flat head	PTH .....	Phillips truss head
GA .....	gauge	PTO .....	power take off
HF .....	hex flange	RH .....	right hand
HH .....	hex head	SFH .....	slotted fillister head
HHF .....	hex head flange	SHH .....	slotted hex head
HLH .....	hex lag head	SQH .....	square head
HJ .....	hex jam	SHWH .....	slotted hex washer head
HOC .....	height-of-cut	SPH .....	slotted pan head
HS .....	hex socket	SRH .....	slotted round head
HSBH .....	hex socket button head	STD .....	standard
HSFH .....	hex socket flat head	TAP .....	self tapping
HSH .....	hex socket head	TTH .....	Torx truss head
HWH .....	hex washer head	WH .....	wing head
HWHTF .....	hex washer head thread forming		



## Trailer Bed Assembly

Ref. No.	Part No.	Qty.	Description
1	104-0545	1	Bed Assembly
1:1	98-8688	1	Decal-Caution
1:2	98-8687	1	Decal-Caution, Air Pressure
2	32128-36	22	Nut-Hex Flange
3	98-8761-01	2	Guide - Wheel
4	3231-21	20	Screw-CARR
6	98-8755	4	Bracket - Rod
7	98-8697	4	Spring - Latch
8	99-4536	4	Pin-Grooved
9	98-8696	4	Rod - Large Wheel
10	98-8756	2	Spacer - Stop
11	323-38	2	Screw-HH
12	98-8677-01	2	Insert - Standard
13	99-4515	12	Panel - Fastener
14	98-8776	1	Mat - Bed
15	98-8777	2	Spacer
16	98-8694	2	Decal-Trans Pro 100

Ref. No.	Part No.	Qty.	Description

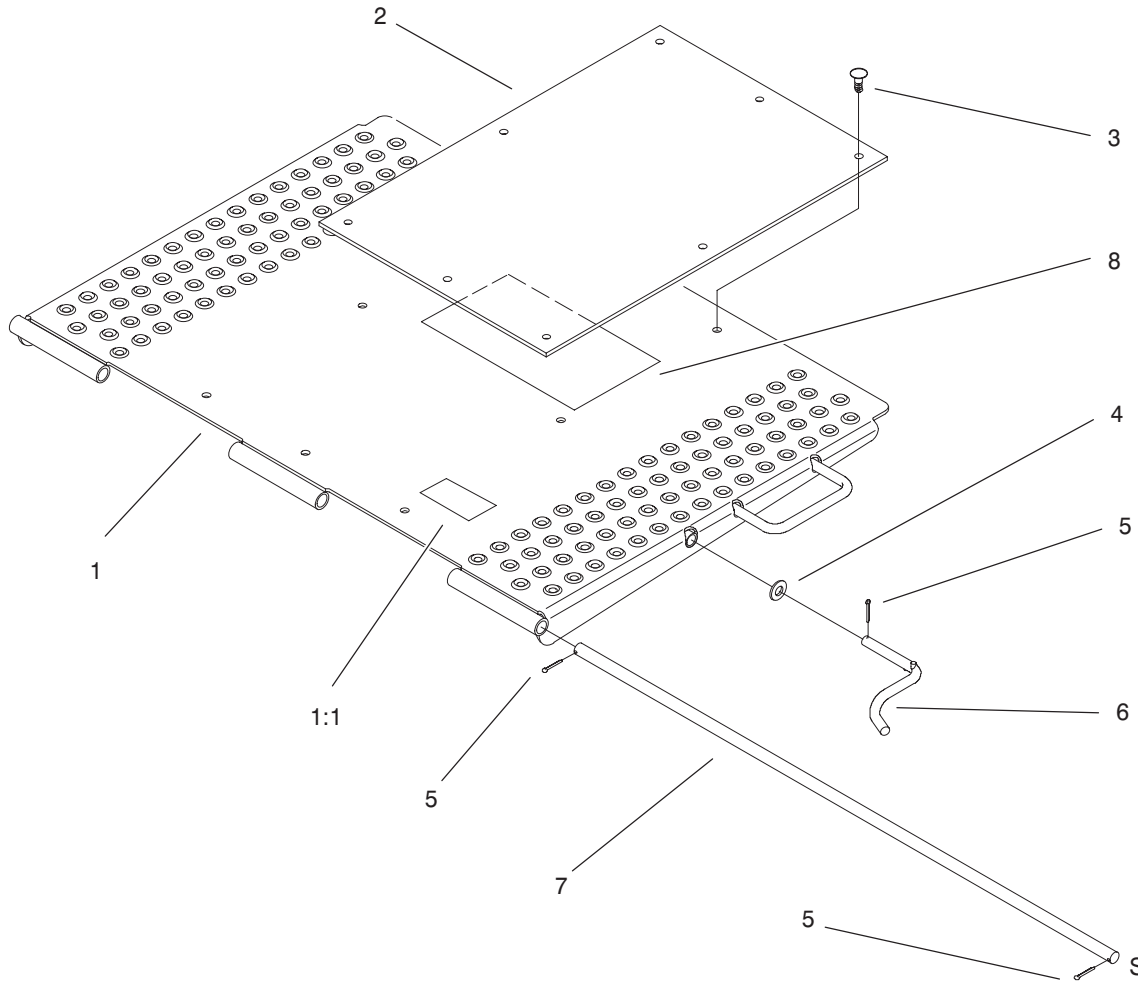


Sheet No.:3

## Tounge Assembly

Ref. No.	Part No.	Qty.	Description
1	323-13	4	Screw-HH
2	98-8779-01	2	Hitch - Trailer
4	32128-36	4	Nut-Hex Flange
5	99-4543-01	1	Tongue - Trailer
6	98-8780	4	Spacer-Hitch

Ref. No.	Part No.	Qty.	Description

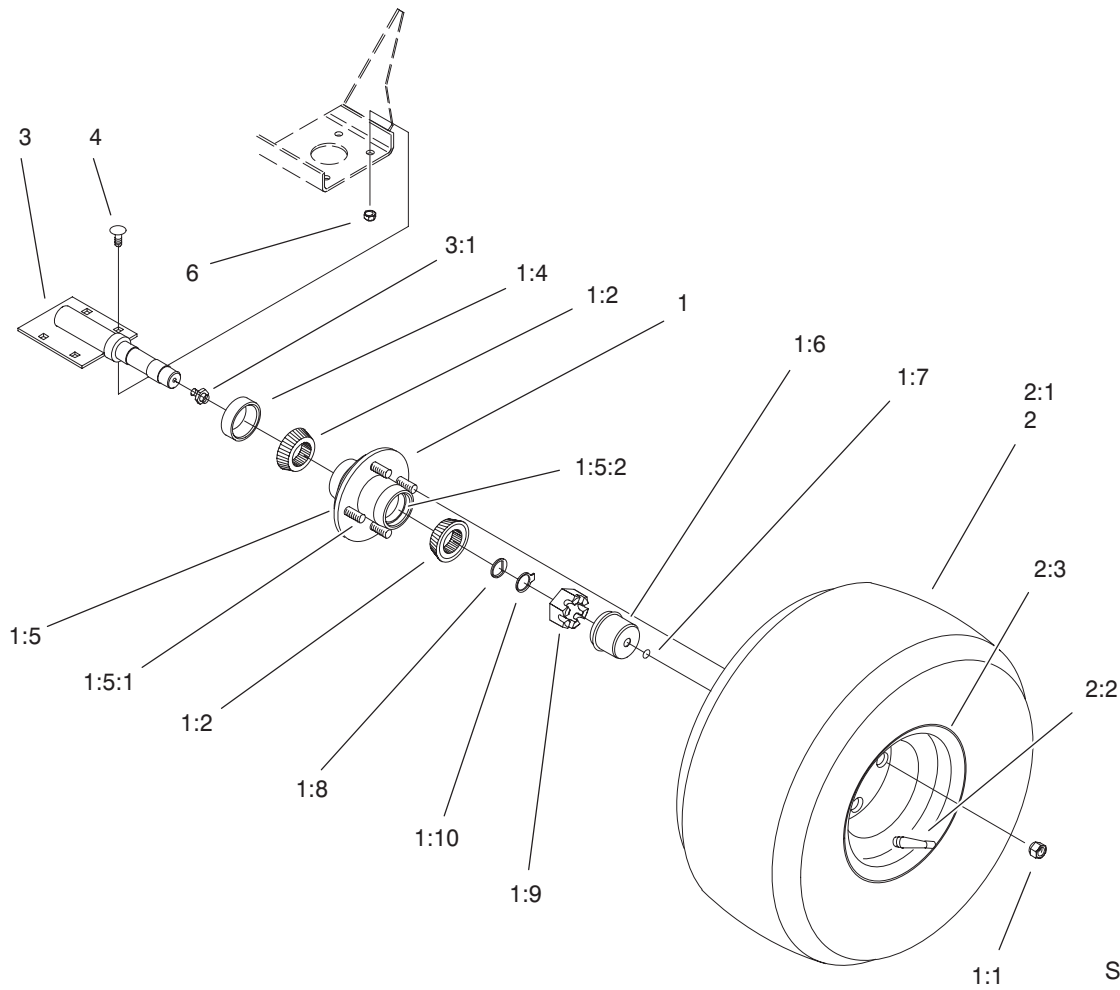


Sheet No.:4

## Ramp Assembly

Ref. No.	Part No.	Qty.	Description
1	104-0546	1	Trailer Ramp Asm
1:1	98-8676	1	Decal-Caution
2	98-8775	1	Mat - Ramp
3	99-4515	8	Panel - Fastener
4	3256-26	1	Washer-Flat
5	3272-7	3	Pin-Cotter
6	98-8754	1	Latch - Ramp
7	98-8759	1	Hinge - Rod
8	62-5550	1	Decal-Toro

Ref. No.	Part No.	Qty.	Description



Sheet No.:5

### Hub and Wheel Assembly

Ref. No.	Part No.	Qty.	Description
1	98-8690	2	Hub ASM
1:1	242-50	4	Nut-Lug
1:2	99-4501	2	Cone - Bearing
1:4	99-4500	1	Seal - Grease
1:5	99-4502	1	Hub
1:5:1	99-4512	4	Stud - Screw In
1:5:2	99-4511	2	Race - Bearing
1:6	99-4503	1	Cap - Grease
1:7	99-4504	1	Plug - Cap, Grease
1:8	99-4505	1	Washer
1:9	99-4508	1	Nut - Castle
1:10	99-4509	1	Washer - Tang
2	98-8691	2	Wheel ASM
2:1	232-27	1	Stem-Valve
2:2	99-4506	1	Tube
2:3	99-4507	1	Rim
3	98-8766-01	2	Axle
3:1	302-58	1	Zerk
4	3231-22	8	Screw-CARR
6	32128-36	8	Nut-Hex Flange

Ref. No.	Part No.	Qty.	Description



