



Count on it.

Parts Catalog

Super Recycler®

Lawn Mower

Model No. 21387—Serial No. 40000000 and Up



Ordering Replacement Parts

To order replacement parts, please supply the part number, the quantity, and the description of each part desired.

Understanding Reference Numbers

Each identified part in an illustration has a reference number. The reference number for a part also appears in the parts list, along with other information about the part.

This catalog uses two special reference number formats, one to indicate parts in a service assembly and another to indicate the quantity of a given part in an illustration.

Service Assembly Reference Numbers

Parts in service assemblies have reference numbers in the form a:b. The a represents the reference number of the entire service assembly and the b represents a sequential number unique to each part within the service assembly.

For example, a wheel assembly might be identified by reference number 6, the tire by 6:1, the valve by 6:2, and the wheel by 6:3. When you order the assembly identified by reference number 6, you receive all parts identified by reference numbers 6:1, 6:2, and 6:3. However, you may also order any part individually. Reference numbers of this type appear in illustration and in parts lists.

Reference Numbers Indicating Quantity

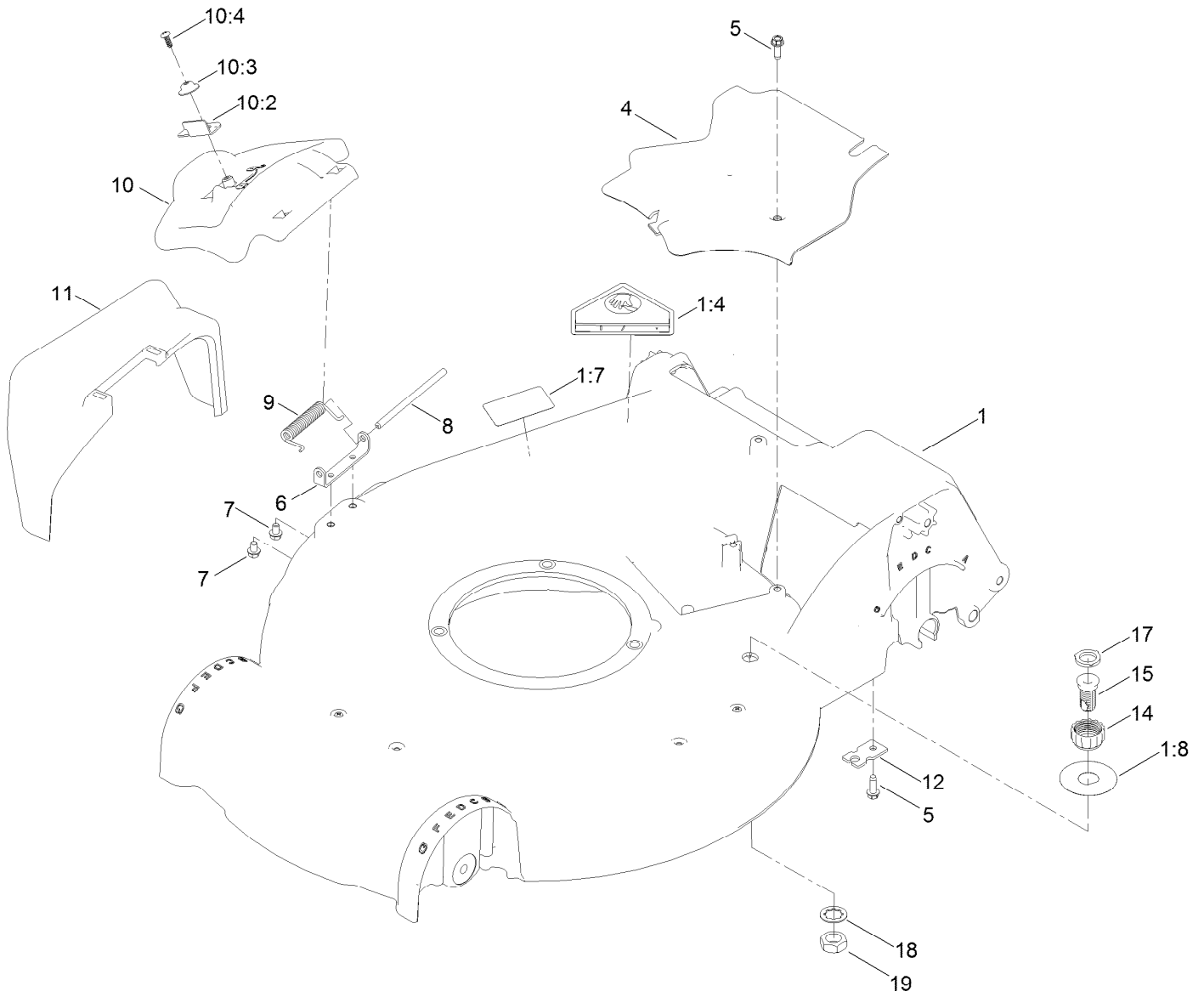
In an illustration, if a reference number indicates more than one part, the reference number has the form nX y. The n represents the quantity of the part, the X is the multiplication symbol, and the y represents the reference number.

For example, in an illustration, the reference number 2X 37 means that two of the parts identified by reference number 37 are indicated.

Contents

| | |
|--|----|
| Housing Assembly | 4 |
| Rear Door and Mulch Plug Assembly | 6 |
| Bag Assembly | 8 |
| Engine and Blade Assembly | 10 |
| Front Wheel and Height-of-Cut Assembly | 12 |
| Transmission and Rear Wheel Height-of-Cut Assembly | 14 |
| Electrical Assembly | 16 |
| Handle Assembly | 18 |
| Attachments and Accessories | 20 |

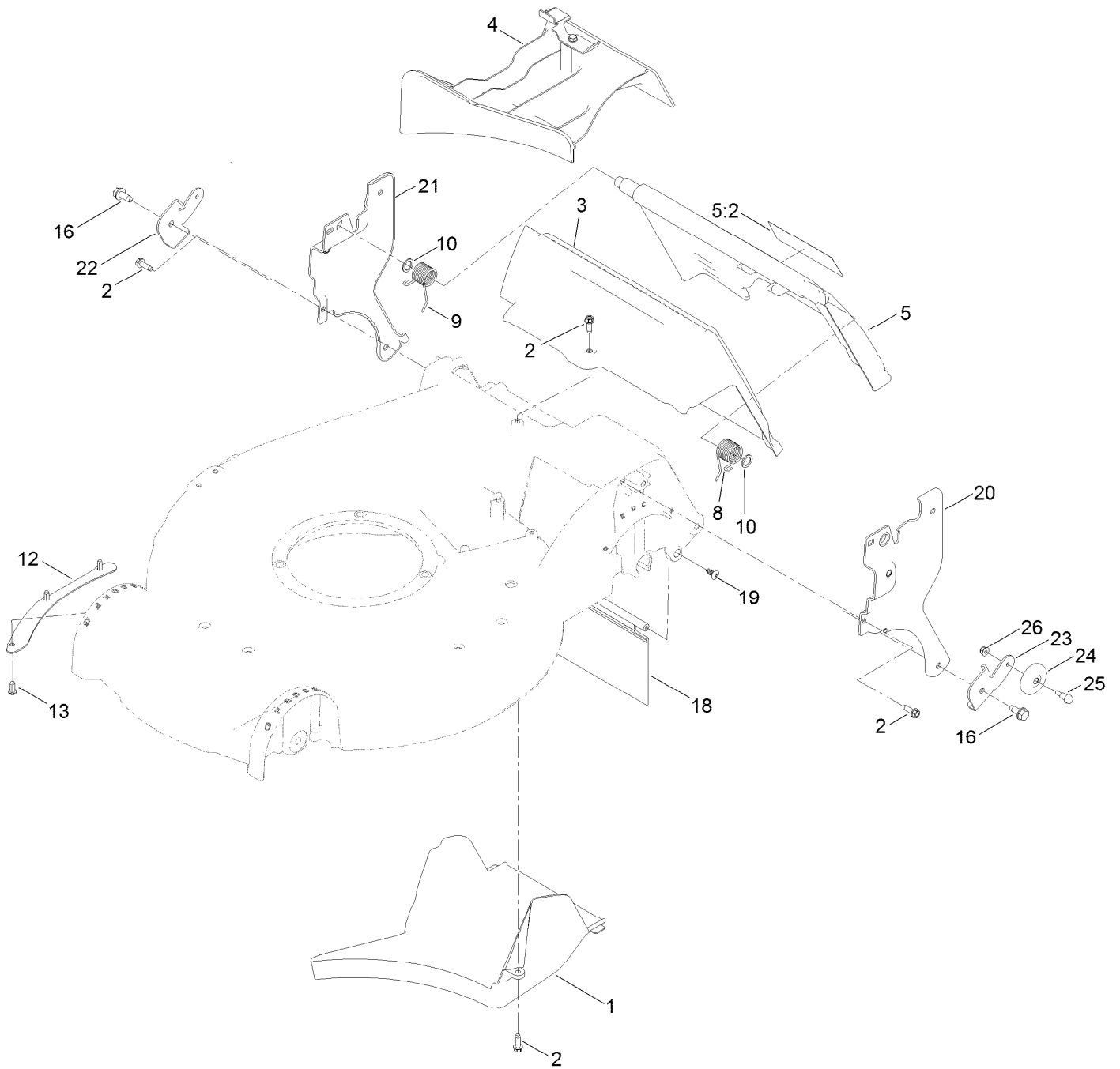
Housing Assembly



Housing Assembly (continued)

| <i>Ref.</i> | <i>Part Number</i> | <i>Qty.</i> | <i>Description</i> | <i>Ref.</i> | <i>Part Number</i> | <i>Qty.</i> | <i>Description</i> |
|-------------|--------------------|-------------|-----------------------|-------------|--------------------|-------------|-----------------------------|
| 1 | 140-3768 | 1 | Housing ASM | 10:2 | 138-3221 | 1 | Latch-Door |
| 1:4 | 94-8072 | 1 | Decal-Danger | 10:3 | 138-3242 | 1 | Cap-Door |
| 1:7 | 125-5092 | 1 | Decal-Placement, Foot | 10:4 | 137-9137 | 1 | Screw-PPH |
| 1:8 | 137-9196 | 1 | Decal-Quick Wash | 11 | 108-3753 | 1 | Chute-Discharge, Side |
| 4 | 107-7494 | 1 | Cover-Belt | 12 | 138-3224 | 1 | Bracket-Cable, Traction |
| 5 | 49-2040 | 2 | Screw-HWHTF | 14 | 112-6401 | 1 | Coupling-Hose, Washout Port |
| 6 | 112-6416 | 1 | Bracket-Cover | 15 | 112-6400 | 1 | Port-Washout |
| 7 | 137-4795 | 2 | Screw | 17 | 112-6438 | 1 | Washer-Seal, Washout Port |
| 8 | 99-5291 | 1 | Rod-Cover | 18 | 3254-5 | 1 | Washer-Lock |
| 9 | 99-5293 | 1 | Spring-Torsion | 19 | 3218-6 | 1 | Nut-Jam |
| 10 | 107-3717 | 1 | Discharge Door ASM | | | | |

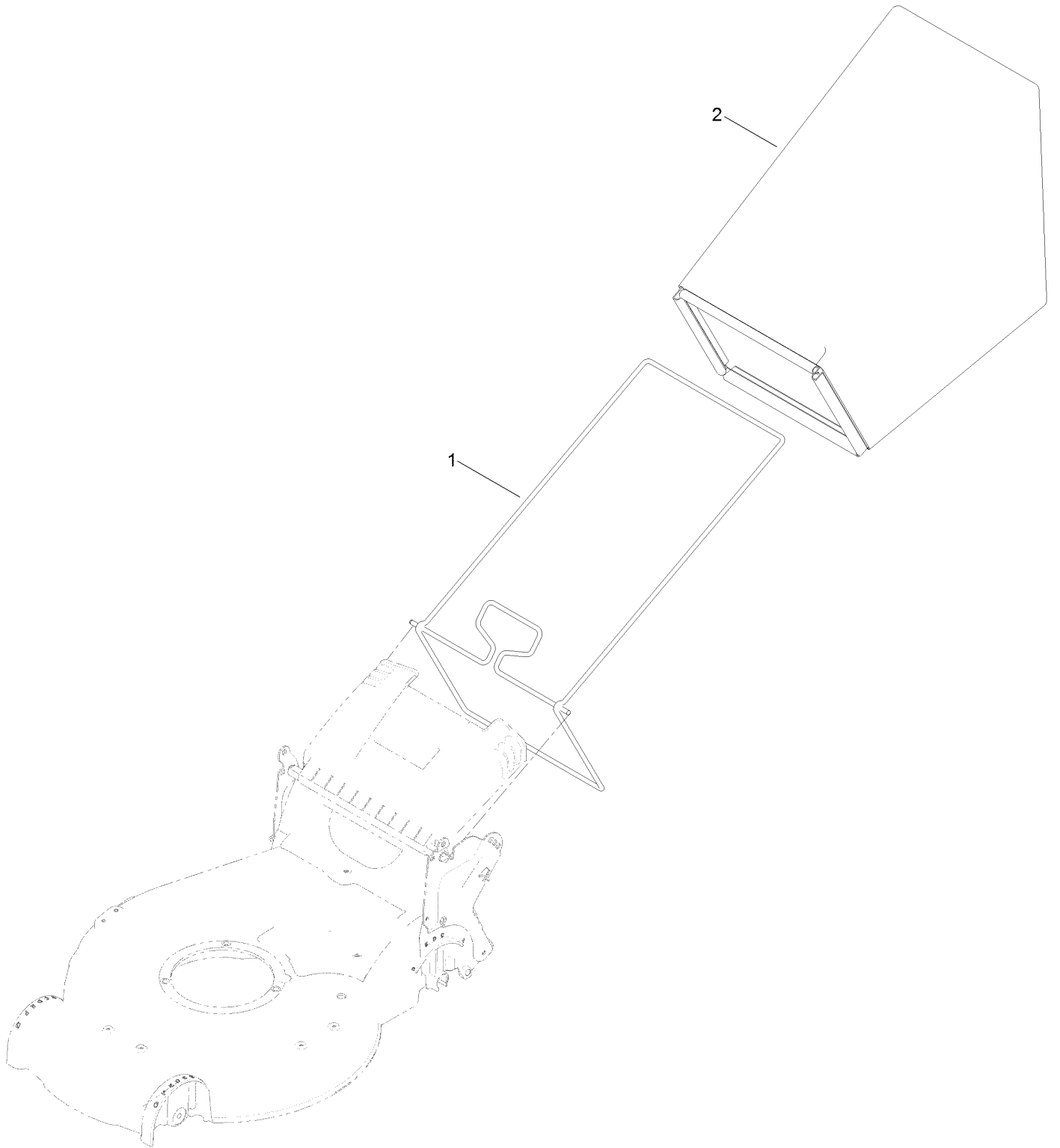
Rear Door and Mulch Plug Assembly



Rear Door and Mulch Plug Assembly (continued)

| <i>Ref.</i> | <i>Part Number</i> | <i>Qty.</i> | <i>Description</i> | <i>Ref.</i> | <i>Part Number</i> | <i>Qty.</i> | <i>Description</i> |
|-------------|--------------------|-------------|--------------------|-------------|--------------------|-------------|-----------------------|
| 1 | 107-7495 | 1 | Tunnel-Discharge | 16 | 32144-70 | 2 | Screw-HWHTF |
| 2 | 49-2040 | 5 | Screw-HWHTF | 18 | 120-7011 | 1 | Shield-Trailing |
| 3 | 114-2668 | 1 | Chute | 19 | 117-1092 | 2 | Screw-PTH |
| 4 | 115-8413 | 1 | Mulch Plug ASM | 20 | 137-9108 | 1 | Plate-Handle, LH |
| 5 | 137-9139 | 1 | Rear Door ASM | 21 | 137-9107 | 1 | Plate-Handle, RH |
| 5:2 | 131-4514 | 1 | Decal-Warning | 22 | 140-1286-03 | 1 | Bracket-Smartstow, RH |
| 8 | 115-2859 | 1 | Spring-Torsion | 23 | 140-1287-03 | 1 | Bracket-Smartstow, LH |
| 9 | 114-7924 | 1 | Spring-Torsion | 24 | 106-9799 | 2 | Wheel-Sweep |
| 10 | 94-8196 | 2 | Washer-Nylon | 25 | 140-1292 | 2 | Screw-Shoulder |
| 12 | 105-1316-01 | 1 | Lip-Housing | 26 | 138-0719 | 2 | Nut-HF |
| 13 | 63-8590 | 3 | Screw | | | | |

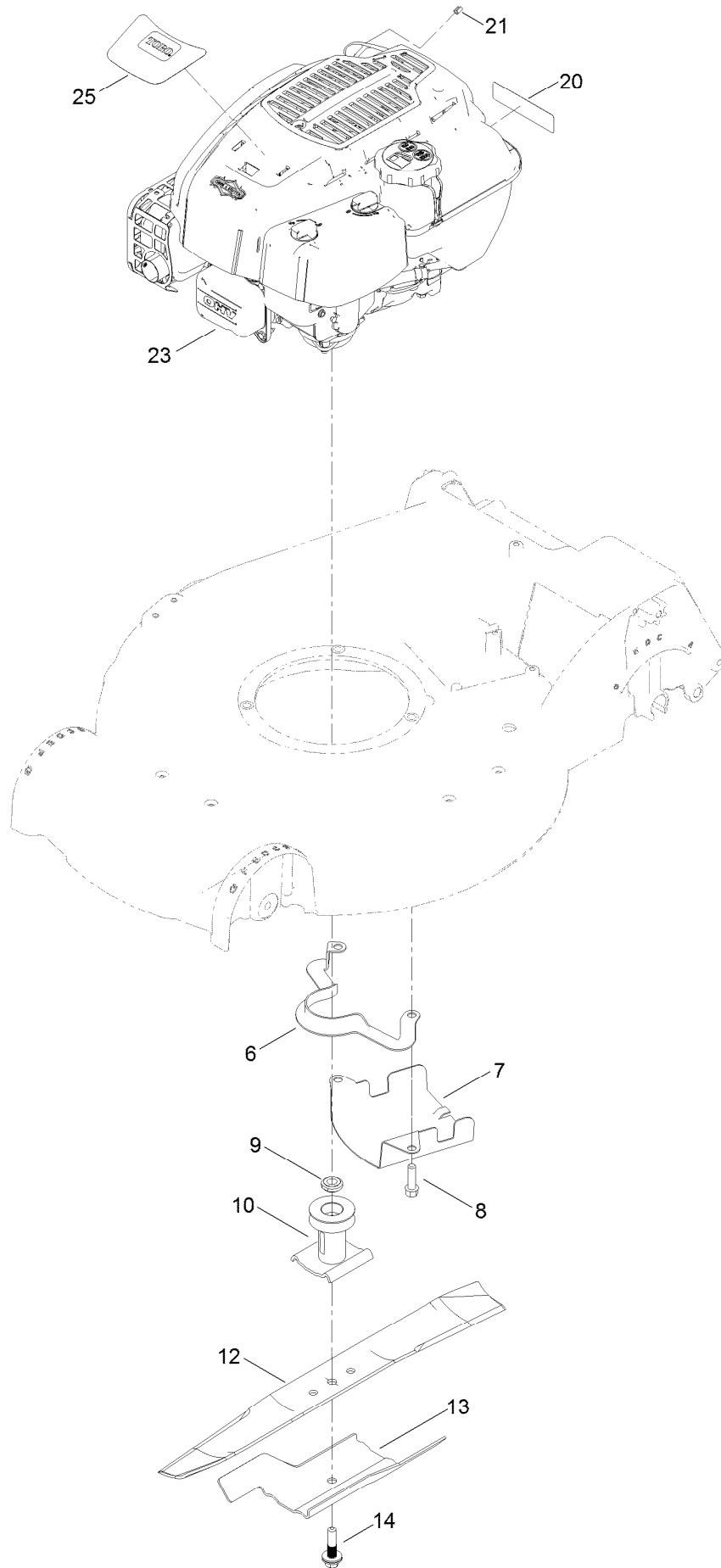
Bag Assembly



Bag Assembly (continued)

| <i>Ref.</i> | <i>Part Number</i> | <i>Qty.</i> | <i>Description</i> |
|-------------|--------------------|-------------|--------------------|
| 1 | 132-4529-03 | 1 | Bag Frame ASM |
| 2 | 114-2664 | 1 | Grass Bag ASM |

Engine and Blade Assembly



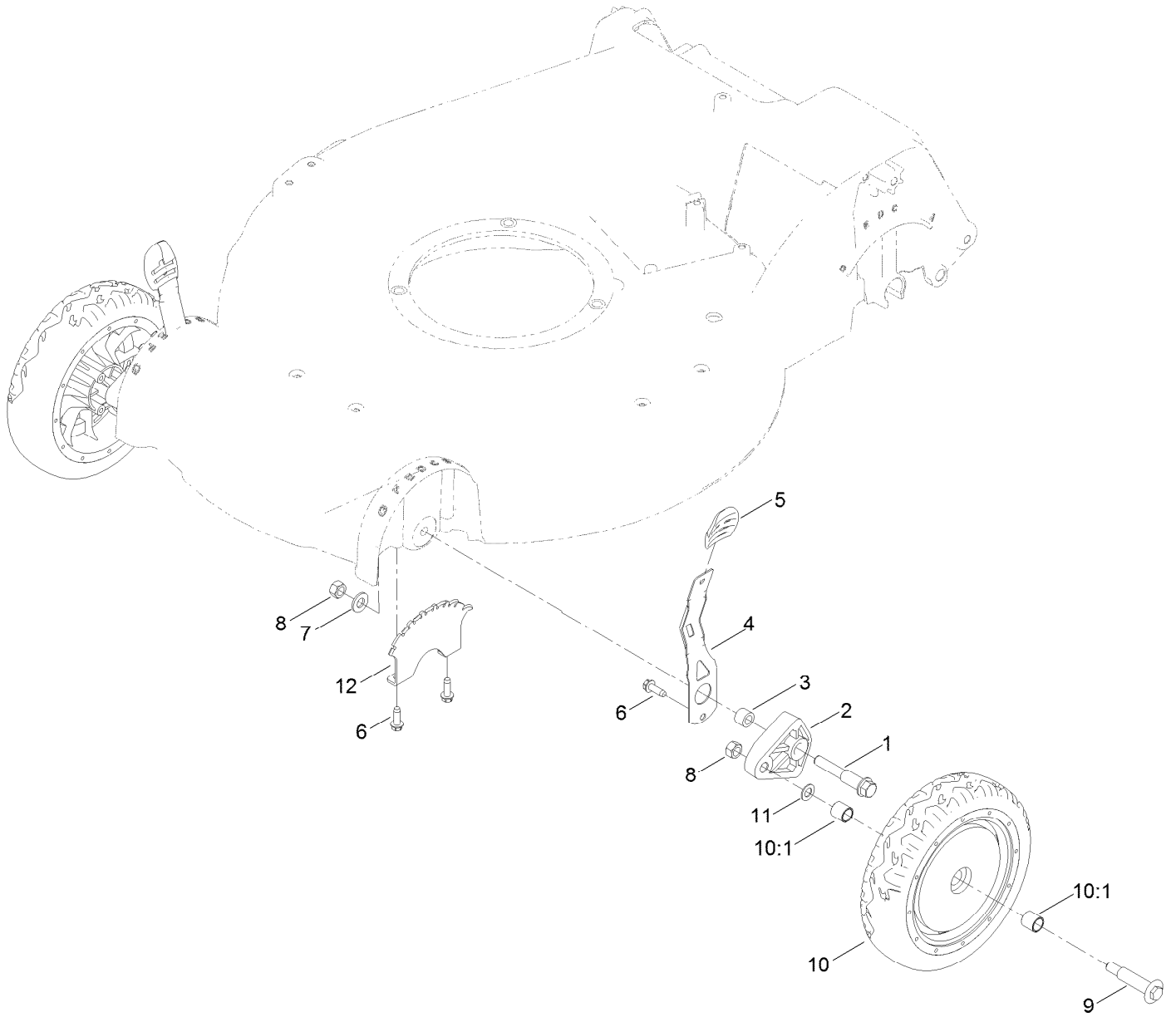
Engine and Blade Assembly (continued)

| <i>Ref.</i> | <i>Part Number</i> | <i>Qty.</i> | <i>Description</i> | <i>Ref.</i> | <i>Part Number</i> | <i>Qty.</i> | <i>Description</i> |
|-------------|--------------------|-------------|-----------------------|-------------|--------------------|-------------|---------------------------|
| 6 | 108-8110-03 | 1 | Guide-Belt | 14 | 125-2466 | 1 | Bolt-Blade |
| 7 | 107-7489-03 | 1 | Shield-Grass | 20 | 133-8062 | 1 | Decal-Arrestor, Spark |
| 8 | 95-1727 | 3 | Screw-Taptite | 21 | 2210-316 | 1 | Stop-Rope |
| 9 | 106-3999 | 1 | Spacer-Driver | 23 | | 1 | Engine-Briggs 875 ES SS ● |
| 10 | 106-3987 | 1 | Driver-Blade | | | | ■ |
| 12 | 133-8183-03 | 1 | Blade-Recycling, 21In | 25 | 140-3774 | 1 | Decal-Engine |
| 13 | 105-6848-01 | 1 | Accelerator-Blade | | | | |

● Not serviced separately

■ Obtain parts from www.briggsandstratton.com

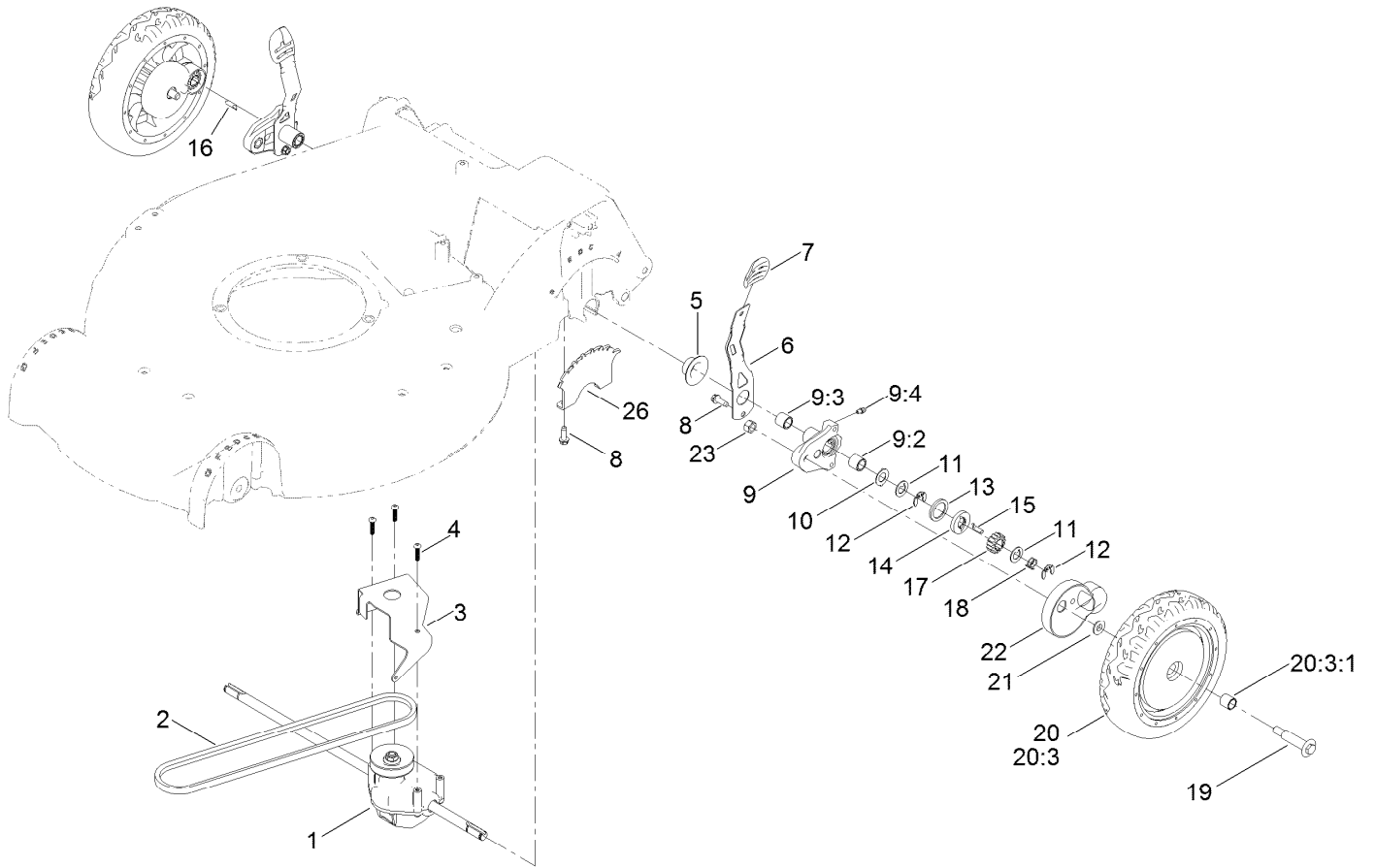
Front Wheel and Height-of-Cut Assembly



Front Wheel and Height-of-Cut Assembly (continued)

| <i>Ref.</i> | <i>Part Number</i> | <i>Qty.</i> | <i>Description</i> | <i>Ref.</i> | <i>Part Number</i> | <i>Qty.</i> | <i>Description</i> |
|-------------|--------------------|-------------|--------------------|-------------|--------------------|-------------|--------------------|
| 1 | 114-3467 | 2 | Screw-Shoulder | 8 | 603773 | 4 | Locknut |
| 2 | 107-7492 | 2 | Arm-Pivot | 9 | 92-1057 | 2 | Bolt-Shoulder |
| 3 | 52-2480 | 2 | Spacer-Wheel | 10 | 140-1294 | 2 | Wheel ASM |
| 4 | 107-7491 | 2 | Arm-Spring | 10:1 | 27-6250 | 2 | Bushing |
| 5 | 105-3042 | 2 | Knob-Lever, HOC | 11 | 40-1940 | 2 | Washer |
| 6 | 49-2040 | 6 | Screw-HWHTF | 12 | 139-1669-01 | 2 | Plate-HOC |
| 7 | 3256-24 | 2 | Washer-Flat | | | | |

Transmission and Rear Wheel Height-of-Cut Assembly

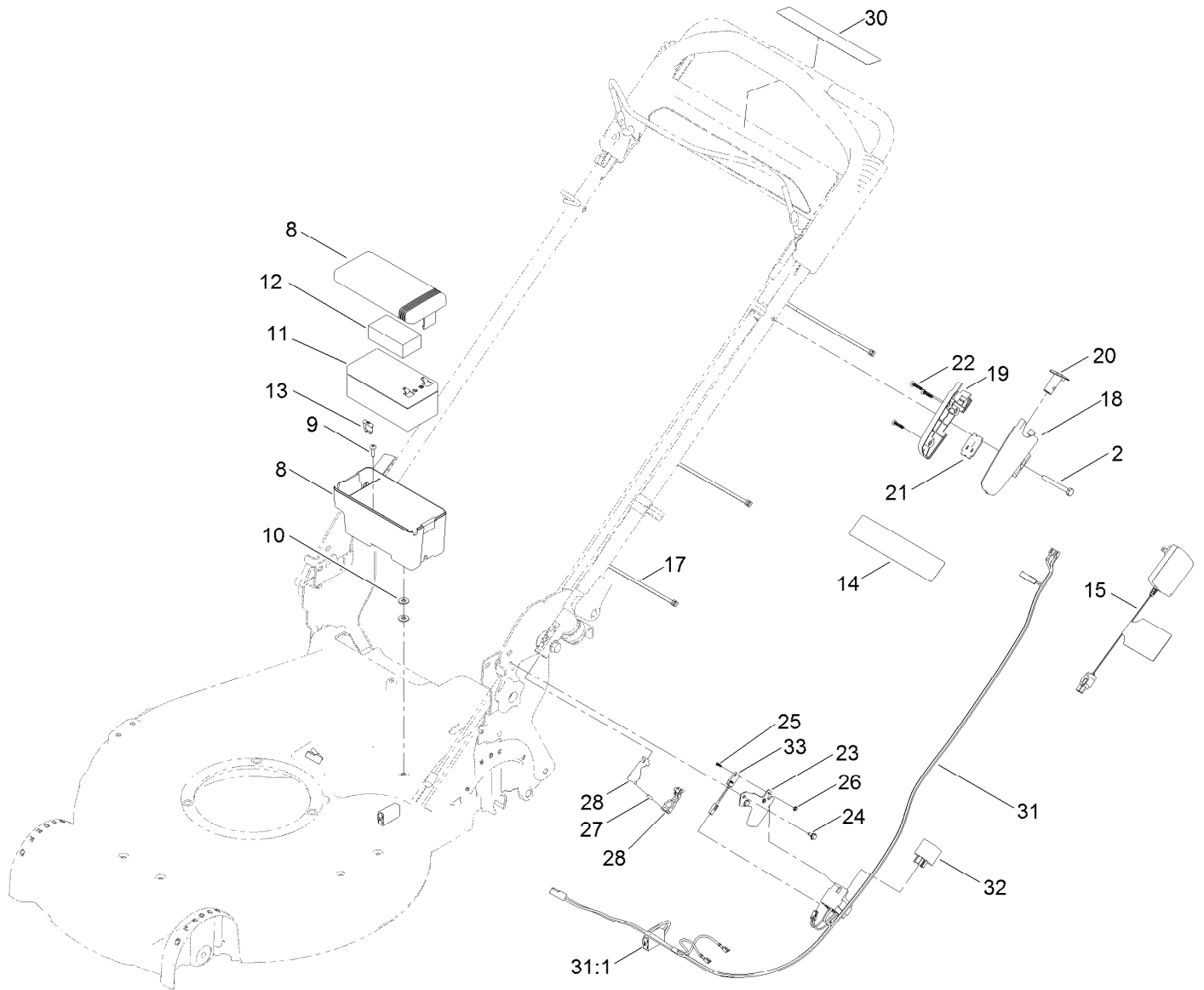


Transmission and Rear Wheel Height-of-Cut Assembly (continued)

| <i>Ref.</i> | <i>Part Number</i> | <i>Qty.</i> | <i>Description</i> | <i>Ref.</i> | <i>Part Number</i> | <i>Qty.</i> | <i>Description</i> |
|-------------|--------------------|-------------|----------------------|-------------|--------------------|-------------|---------------------|
| 1 | 121-9184 | 1 | Transmission ASM | 13 | 65-4710 | 2 | Ring-Friction |
| 2 | 115-4669 | 1 | Belt-V | 14 | 65-4760 | 2 | Washer-Clutch |
| 3 | 114-7977-03 | 1 | Bracket-Transmission | 15 | 139-6644 | 1 | Key-Rocking, L.H. |
| 4 | 108-7476 | 3 | Screw-Plastite | 16 | 139-6643 | 1 | Key-Rocking, R.H. |
| 5 | 138-3235 | 2 | Cap-End | 17 | 65-4750 | 2 | Gear-Pinion |
| 6 | 107-7491 | 2 | Arm-Spring | 18 | 65-4720 | 2 | Spring-Compression |
| 7 | 105-3042 | 2 | Knob-Lever, HOC | 19 | 92-1057 | 2 | Bolt-Shoulder |
| 8 | 49-2040 | 6 | Screw-HWHTF | 20 | 140-1295 | 2 | Wheel Gear ASM |
| 9 | 100-8774 | 2 | Pivot Arm ASM | 20:3 | | 1 | Wheel ASM ● |
| 9:2 | 47-2900 | 1 | Bushing | 20:3:1 | 27-6250 | 2 | Bushing |
| 9:3 | 70-9760 | 1 | Bushing | 21 | 74-1671 | 2 | Spacer-Cover, Wheel |
| 9:4 | 302-56 | 1 | Fitting-Grease | 22 | 74-1660 | 2 | Cover-Wheel |
| 10 | 65-4730 | 2 | Washer-Arm, Pivot | 23 | 603773 | 2 | Locknut |
| 11 | 65-4740 | 4 | Washer-Thrust, Keyed | 26 | 139-1669-01 | 2 | Plate-HOC |
| 12 | 65-2720 | 4 | Ring-Retaining, Clip | | | | |

● Not serviced separately

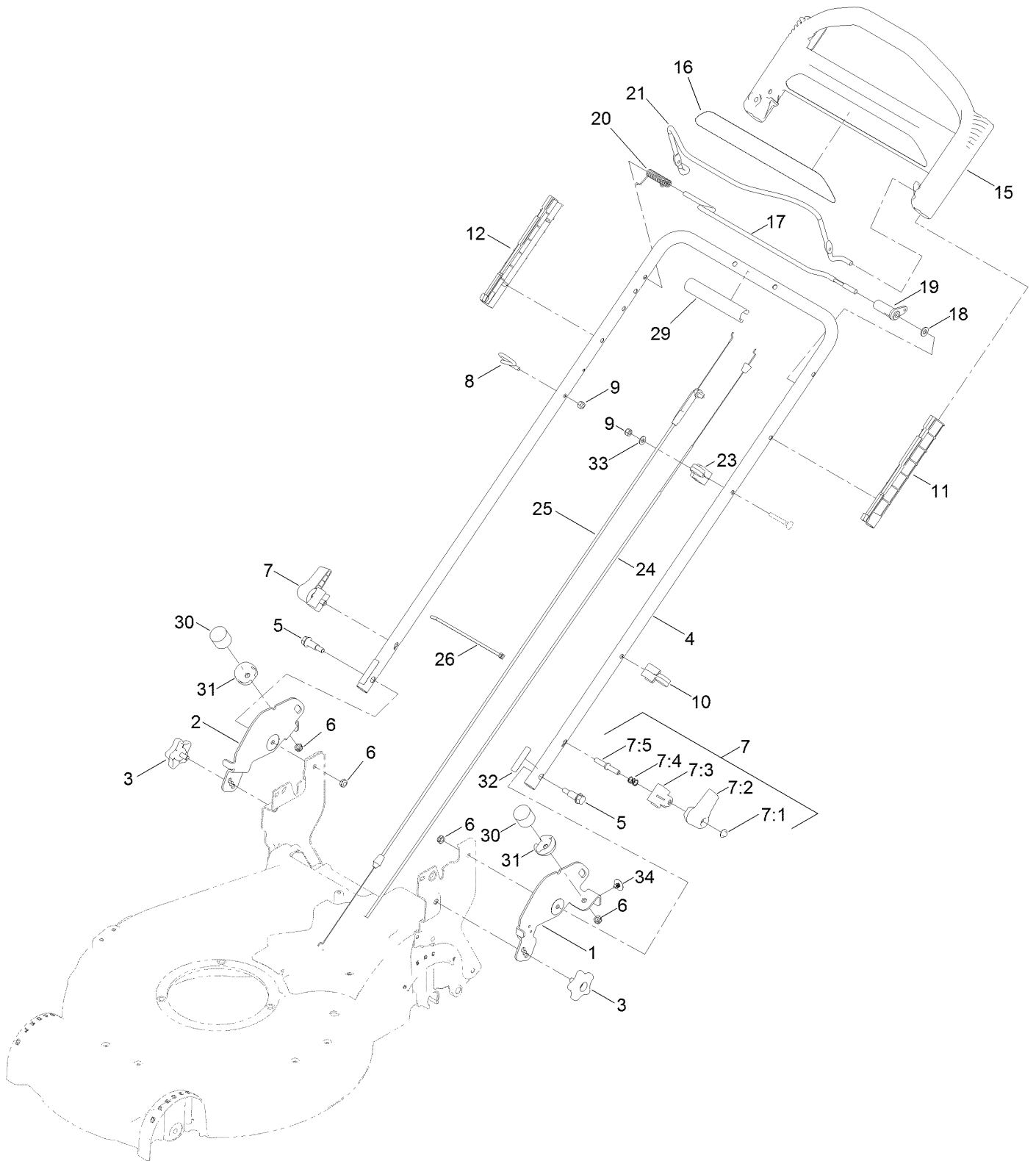
Electrical Assembly



Electrical Assembly (continued)

| <i>Ref.</i> | <i>Part Number</i> | <i>Qty.</i> | <i>Description</i> | <i>Ref.</i> | <i>Part Number</i> | <i>Qty.</i> | <i>Description</i> |
|-------------|--------------------|-------------|------------------------|-------------|--------------------|-------------|--------------------|
| 2 | 321-50 | 1 | Screw-HH | 21 | 121-9173 | 1 | Switch-Push Button |
| 8 | 108-4844 | 1 | Battery Box ASM | 22 | 94-4496 | 3 | Screw-PPH |
| 9 | 32144-32 | 1 | Screw | 23 | 140-3828 | 1 | Bracket-Sensor |
| 10 | 120-9679 | 2 | Washer-Flat | 24 | 104-2065 | 2 | Screw-HWH |
| 11 | 106-8397 | 1 | Battery-Wet | 25 | 360-0224 | 2 | Screw |
| 12 | 107-3774 | 1 | Foam-Battery, Top | 26 | 3296-52 | 2 | Nut-Lock, NI |
| 13 | 99-6124 | 1 | Fuse-40 Amp | 27 | 114-5896 | 1 | Magnet |
| 14 | 104-7953 | 1 | Decal-Warning | 28 | 140-3806 | 2 | Housing-Magnet |
| 15 | 136-9126 | 1 | Charger, Battery (12V) | 30 | 133-1900 | 1 | Decal-Button, Push |
| 17 | 614249 | 3 | Tie-Cable | 31 | 140-3761 | 1 | Harness-Wire |
| 18 | 133-8160 | 1 | Housing-Switch, LH | 31:1 | 99-6124 | 1 | Fuse-40 Amp |
| 19 | 133-8161 | 1 | Housing-Switch, RH | 32 | 1-643275 | 1 | Relay |
| 20 | 125-2470 | 1 | Button-Switch | 33 | 140-3832 | 1 | Reed Switch ASM |

Handle Assembly



Handle Assembly (continued)

| <i>Ref.</i> | <i>Part Number</i> | <i>Qty.</i> | <i>Description</i> | <i>Ref.</i> | <i>Part Number</i> | <i>Qty.</i> | <i>Description</i> |
|-------------|--------------------|-------------|--------------------|-------------|--------------------|-------------|-----------------------|
| 1 | 140-3831-03 | 1 | Brkt-Float, LH | 15 | 104-8678 | 1 | Handle-Control |
| 2 | 137-4838-03 | 1 | Bracket-Float, RH | 16 | 140-3821 | 1 | Decal |
| 3 | 137-4844 | 2 | Knob-Handle | 17 | 136-7150 | 1 | Bar-Control, Traction |
| 4 | 140-3824-05 | 1 | Handle-Upper | 18 | 3256-23 | 1 | Washer-Plain |
| 5 | 130-2344 | 2 | Bolt-Shoulder | 19 | 99-1589 | 1 | Lever-Traction |
| 6 | 3296-47 | 4 | Nut-Lock, NI | 20 | 136-7166 | 1 | Spring-Torsion |
| 7 | 138-3249 | 2 | Quick Release ASM | 21 | 131-0880-03 | 1 | Bail-Brake |
| 7:1 | 32112-11 | 1 | Nut-Push | 23 | 136-5864 | 1 | Anchor-Cable |
| 7:2 | 138-3248 | 1 | Lever-Release | 24 | 117-9389 | 1 | Cable-Traction |
| 7:3 | 138-3253 | 1 | Anchor-Spring | 25 | 117-5900 | 1 | Cable-Brake |
| 7:4 | 115-2858 | 1 | Spring-Compression | 26 | 614249 | 3 | Tie-Cable |
| 7:5 | 138-3243 | 1 | Rod-Release | 29 | 131-4551 | 1 | Cover-Handle |
| 8 | 86-9671 | 1 | Guide-Rope | 30 | 137-4803 | 2 | Bumper-Rubber |
| 9 | 3296-73 | 2 | Nut-Lock, NI | 31 | 137-9100 | 2 | Cover-Bumper |
| 10 | 114-7988 | 1 | Guide-Cable | 32 | 140-3827 | 2 | Decal-Flex |
| 11 | 105-6842 | 1 | Guide-LH | 33 | 3256-1 | 1 | Washer-Flat |
| 12 | 105-6841 | 1 | Guide-RH | 34 | 130-6721 | 2 | Clip-Tree |

Attachments and Accessories

For 21387 Super Recycler Lawn Mower

| Product Name | Model/Part |
|--|-------------------|
| Bagging Blade | 108-3759-03 |
| Briggs Maint Kit..... | 130-8148 |
| 4-Cycle Fuel, Snow And Lawn 32oz Can | 131-3823 |
| Traction Assist Handle Kit..... | 131-4590 |
| Toro Premium Fuel Treatment 12 Oz Bottle | 131-6572 |
| Oil-30/10W-30 Synthetic (Quart)..... | 138-6053 |
| Toro 4-Cycle SAE 30 Oil (32oz Bottle) | 38903 |
| Summer Oil-Case of 24 (20oz Bottles)..... | 38916 |
| Bag-Walk Behind (Toro)..... | 490-7318 |
| Lawnmower Cover..... | 490-7462 |

Notes:

Notes:

Notes:



Count on it.