



Cab Kit

Workman® GTX Utility Vehicle

Model No. 07142

Addendum

Setup

Loose Parts

Use the chart below to verify that all parts have been shipped.

Description	Qty.	Use
No parts required	–	Prepare the machine.
Hex-washer head screw (#10 x 3/4 inch)—for electric machines with Serial No. 403448001 and above only	2	Route the wire harness.
Cab adapter wire harness—for electric machines with Serial No. 403448001 and below only.	1	Install the cab adapter wire harness.

The included wire harness and hardware is for electric machines with Serial No. 403448001 and above, or any machine that has had the ignition switch update kit and cab kit added to it.

Preparing the Machine

1. Park the machine on a level surface, set the parking brake, shut off the engine, and remove the key.
2. Raise the bed until the bed prop rod is fully engaged; refer to the *Operator's Manual* for the machine.
3. Remove the seat base.
4. Disconnect the negative battery cable; refer to your *Operator's Manual*.

Routing the Wire Harness

For Electric Machines

Important: The Power Converter Kit is required to use the cab on a Workman GTX Electric utility vehicle. Contact your authorized the manufacturer distributor for more information.

1. For machines with Serial No. 403448001 and above, secure the new fuse block using the 2 hex-washer head screws (#10 x 3/4 inch) and 2 serrated nuts (#10) as shown in [Figure 1](#).



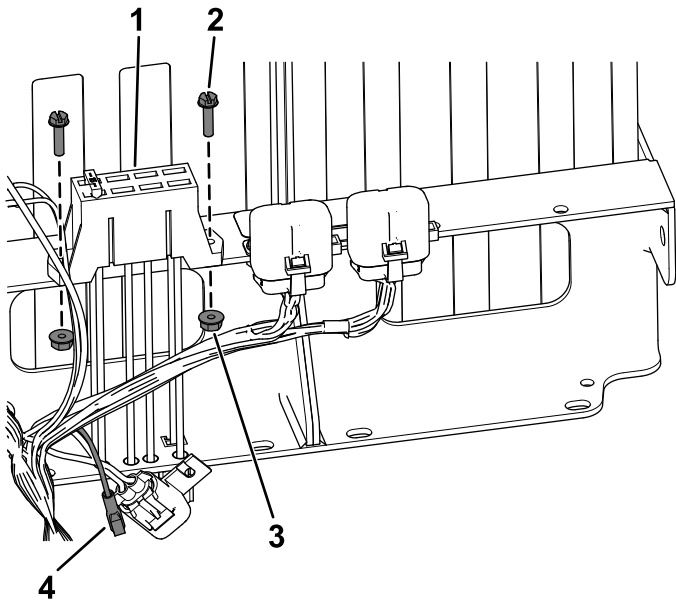


Figure 1

- | | |
|---|--------------------------------------|
| 1. New fuse block | 3. Serrated nut (#10) |
| 2. Hex-washer head screw (#10 x 3/4 inch) | 4. Female connector (#10 x 3/4 inch) |

2. **For machines with Serial No. 403448001 and above**, connect the female connector on the harness to the new fuse block (Figure 1).
3. Connect the large connector on the new fuse block to the optional power cable on the existing fuse block (Figure 4).
4. Route the wire harness behind the cab and under the seat, and secure the clip on the wire harness to the side panel (Figure 2).

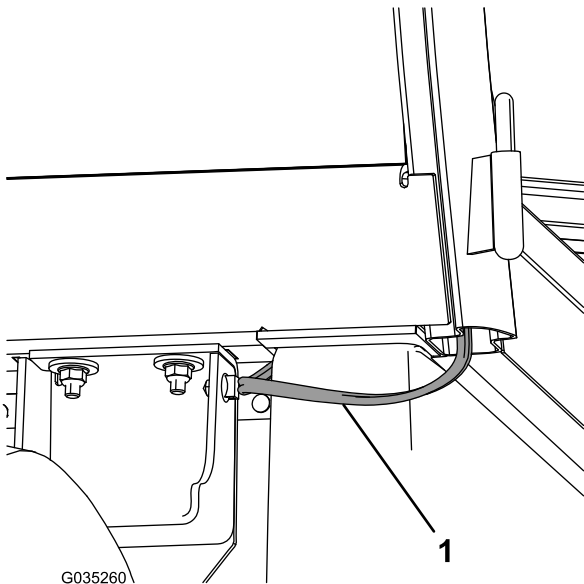


Figure 2

1. Wire harness

5. Install the black ground wire to the ground wire on the Power Converter Kit wire harness (Figure 3).

Note: The black terminal ring is not used.

6. Install the red power wire to the power wire on the Power Converter Kit wire harness (Figure 3).

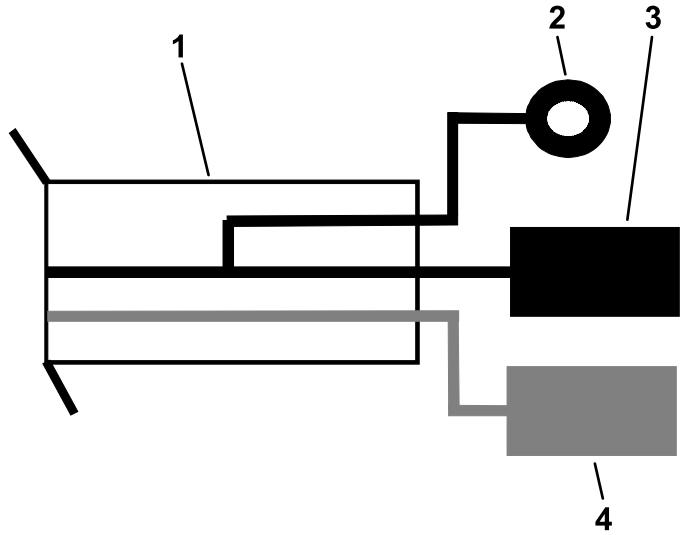


Figure 3

- | | |
|--|--|
| 1. Cab wire harness | 3. Black ground wire with spade terminal |
| 2. Black ground wire with terminal ring (not used) | 4. Red power wire with spade terminal |

7. Connect the remaining wire to the fused wire on the new fuse block (Figure 4).

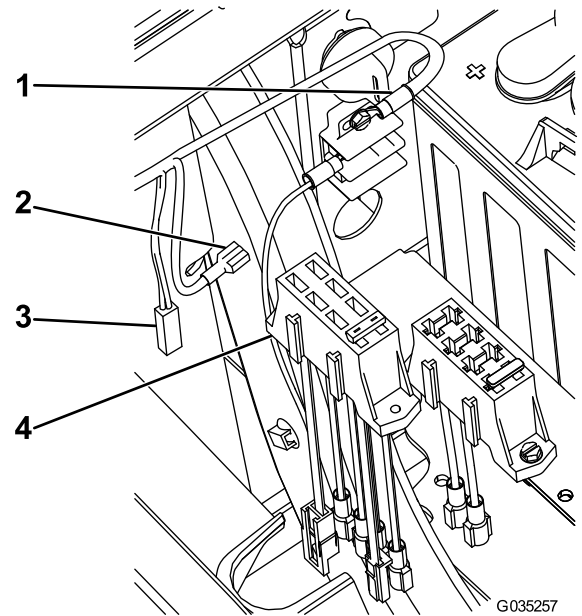


Figure 4

- | | |
|----------------------|------------------------------------|
| 1. To ground | 3. To the optional washer pump kit |
| 2. To the fused wire | 4. New fuse block |

8. Lower the bed and connect the battery; refer to the *Operator's Manual*.
9. Install the previously removed seat base.

Installing the Cab Adapter Wire Harness

Electric Machines Only

For machines with Serial No. 403448001 and below, install the cab adapter wire harness as follows:

1. Open the hood; refer to your machine *Operator's Manual*.
2. Disconnect the 4-pin plug on the main harness from the DC converter under the dash.

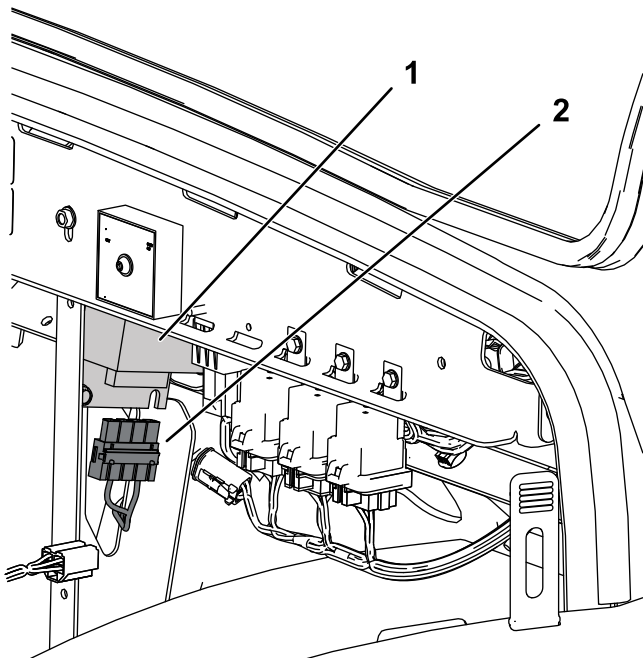


Figure 5

g299535

1. DC converter
2. 4-pin plug on the main harness.

3. Connect the 4-pin socket on the cab adapter wire harness to the 4-pin plug on the main harness.

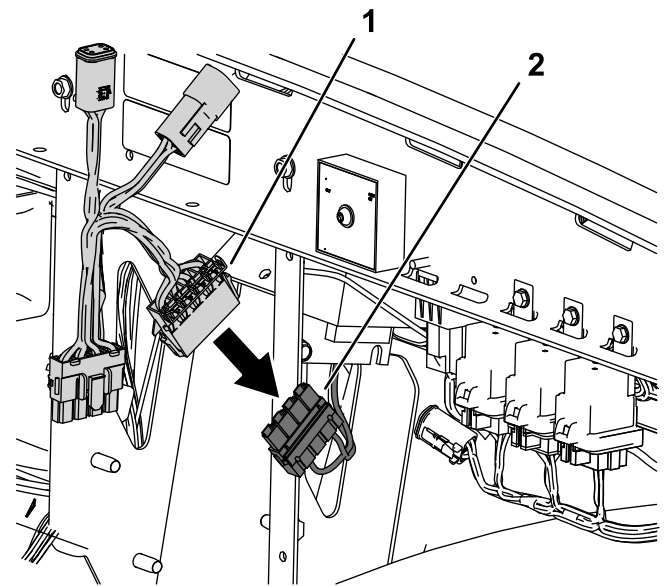


Figure 6

g299566

1. 4-pin socket on the cab adapter wire harness.
2. 4-pin plug on the main harness.

4. Connect the 4-pin plug on the cab adapter wire harness to the DC converter.

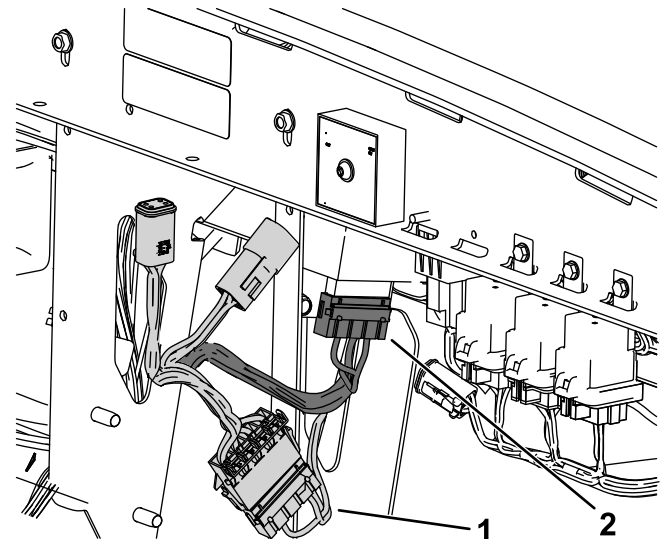


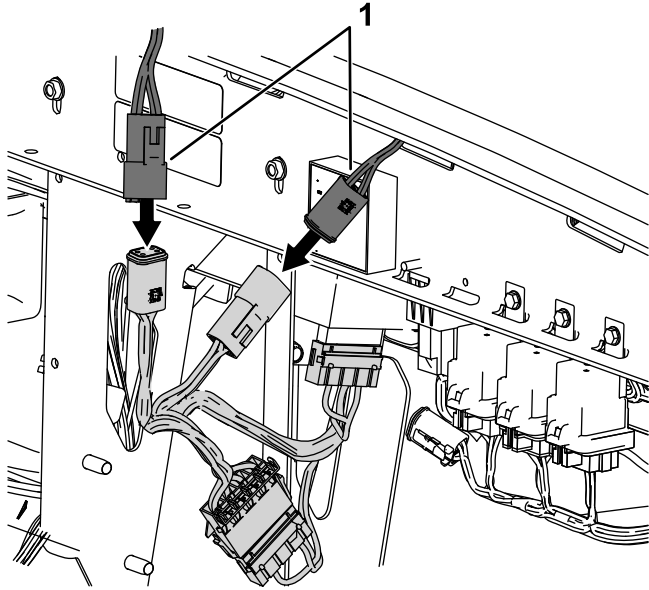
Figure 7

g299568

1. Cab adapter to the main harness connection.
2. Cab adapter to the DC converter connection.

5. Connect the loose square plug on the power converter wire harness to the cab adapter wire harness ([Figure 8](#)).

6. Connect the loose square socket on the power converter wire harness to the cab adapter wire harness (Figure 8).



g299581

Figure 8

1. Power converter harness connections to the cab adapter harness.

-
7. Secure the hood; refer to your machine *Operator's Manual*.