

# LAWN-BOY®

## Silver Pro Series™ Walk-Behind Mower Model No. 10323-20000001 and Up

### Parts Catalog

---

#### Ordering Replacement Parts

To order replacement parts, please supply: the part number, the quantity, and the description of each part desired.

#### Understanding Reference Numbers

Each identified part in an illustration has a reference number. The reference number for a part also appears in the parts list, along with other information about the part.

This catalog uses two special reference number formats, one to indicate parts in a service assembly and another to indicate the quantity of a given part in an illustration.

#### Service Assembly Reference Numbers

Parts in service assemblies have reference numbers in the form **a:b**. The **a** represents the reference number of the entire service assembly and the **b** represents a sequential number unique to each part within the service assembly.

For example, a wheel assembly might be identified by reference number **6**, the tire by **6:1**, the valve by **6:2**, and the wheel by **6:3**. When you order the assembly identified by reference number **6**, you receive all parts identified by reference numbers **6:1**, **6:2**, and **6:3**. However, you may also order any part individually.

Reference numbers of this type appear in illustrations and in part lists.

#### Reference Numbers Indicating Quantity

In an illustration, if a reference number indicates more than one part, the reference number has the form **nX y**. The **n** represents the quantity of the part, the **X** is the multiplication symbol, and the **y** represents the reference number.

For example, in an illustration, the reference number **2X 37** means that two of the parts identified by reference number **37** are indicated.

## Contents

Description	Page	Description	Page
Housing Assembly .....	3	Engine Assembly .....	8
Engine & Blade Assembly .....	4	Short Block Assembly .....	9
Rear Axle Assembly .....	5	Carburetor Assembly .....	10
Handle Assembly .....	6	Gear Case Assembly .....	11
Engine Assembly .....	7		

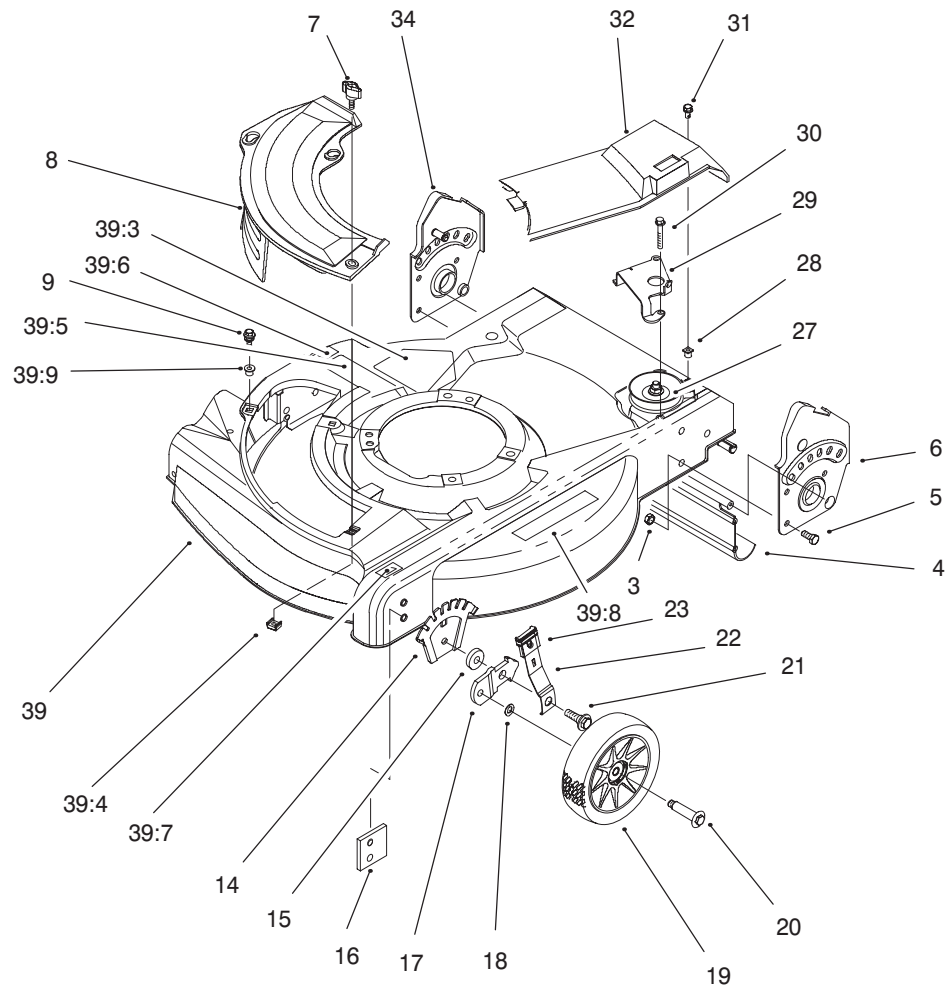
## Accessories

Description	Model / Part No.	Description	Model / Part No.
Side Bagging Kit .....	Model No. 89817	Leaf Shredder Kit .....	Model No. 89860
Leaf Bag .....	Model No. 89804	Leaf Bag Kit w/Chute .....	Model No. 89811

## Part Description Abbreviations

Part descriptions in this catalog may include the following abbreviations.

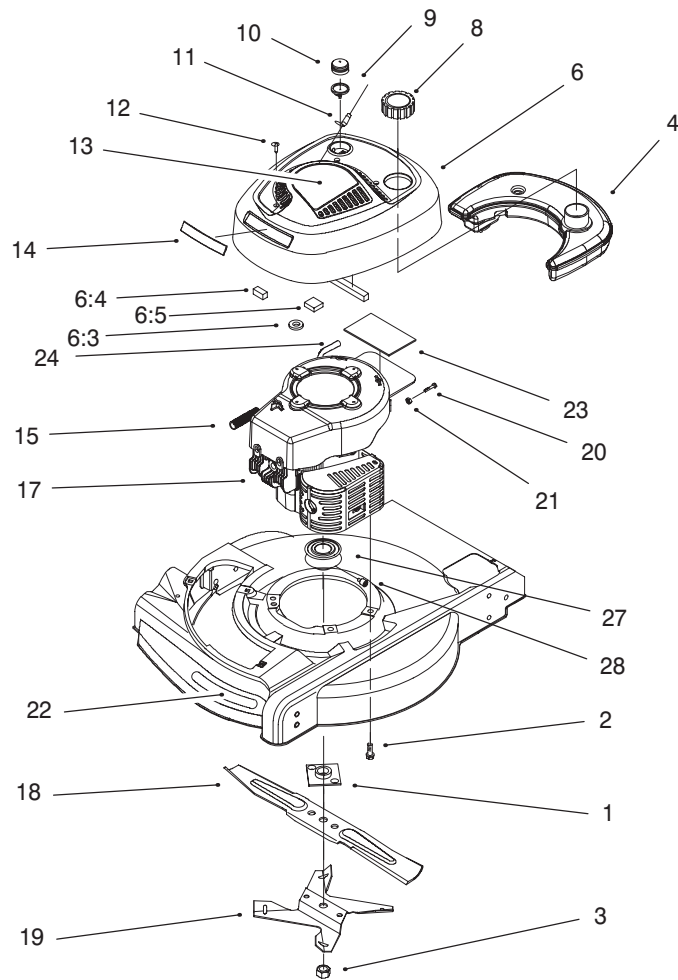
Abbreviation	Meaning	Abbreviation	Meaning
AR .....	as required	INC .....	incorporated
ASM .....	assembly	LH .....	left hand
CARR .....	carriage	NI .....	nylon insert
DEG .....	degrees	PPH .....	Phillips pan head
FH .....	flat head	PTH .....	Phillips truss head
GA .....	gauge	PTO .....	power take off
HF .....	hex flange	RH .....	right hand
HH .....	hex head	SFH .....	slotted fillister head
HHF .....	hex head flange	SHH .....	slotted hex head
HLH .....	hex lag head	SQH .....	square head
HJ .....	hex jam	SHWH .....	slotted hex washer head
HOC .....	height-of-cut	SPH .....	slotted pan head
HS .....	hex socket	SRH .....	slotted round head
HSBH .....	hex socket button head	STD .....	standard
HSFH .....	hex socket flat head	TAP .....	self tapping
HSH .....	hex socket head	TTH .....	Torx truss head
HWH .....	hex washer head	WH .....	wing head
HWHTF .....	hex washer head thread forming		



Sheet No.:2

## Housing Assembly

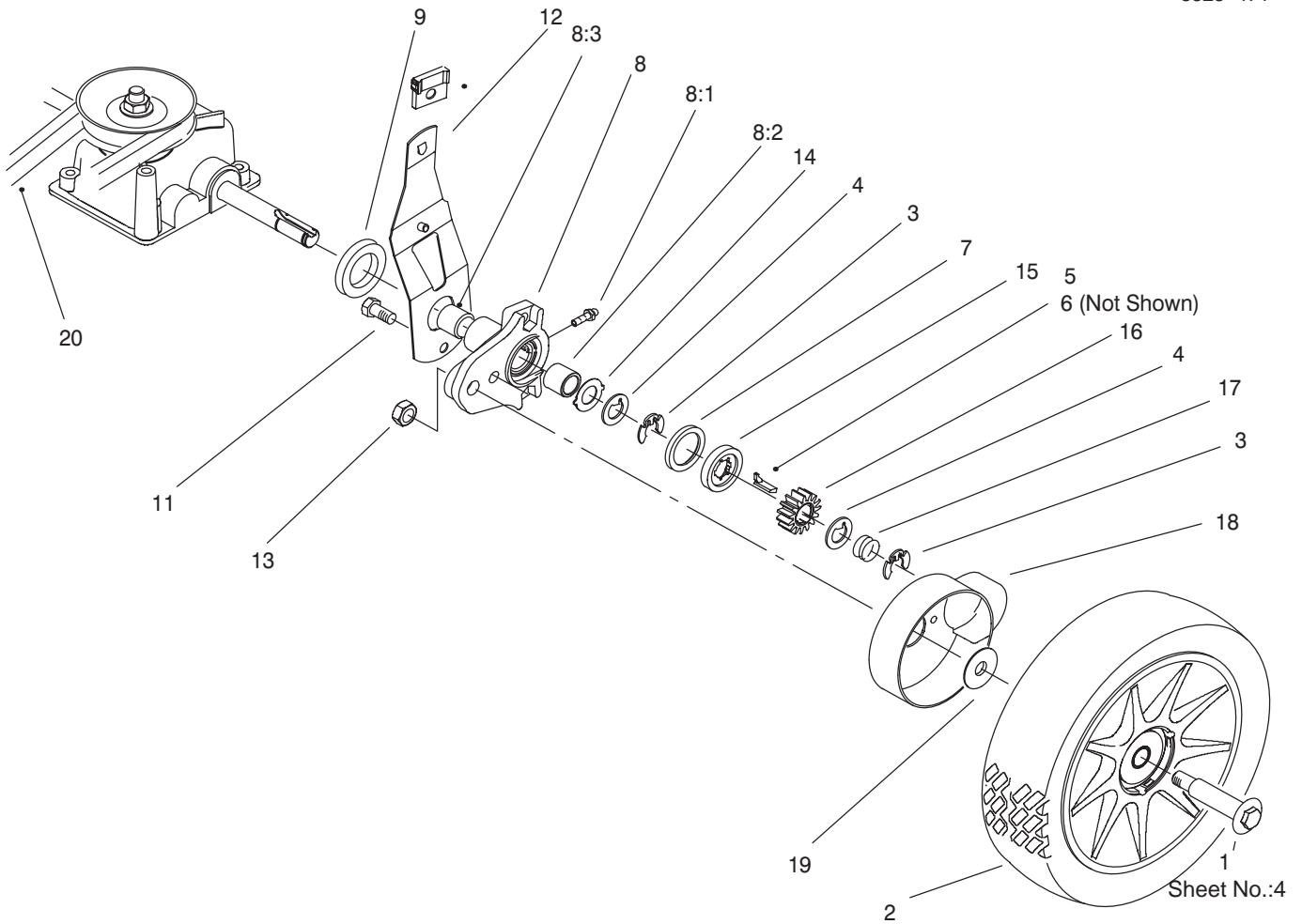
Ref. No.	Part No.	Qty.	Description	Ref. No.	Part No.	Qty.	Description
3	3296-29	6	Nut-Lock NI	32	95-7413	1	Cover - Drive
4	92-8647	1	Shield - Trailing	34	92-7723	1	RH Handle Brkt ASM
5	322-3	6	Screw-HH	39	98-4472	1	ASM - Housing/Baffle Sp
6	92-7724	1	LH Handle Brkt ASM	39:3	43-8480	1	Decal-Danger
7	98-8332	1	Knob	39:4	613765	1	Nut-Cage
8	92-8630	1	Plate-Mulch	39:5	99-6018	1	Decal - Warning
9	614677	2	Screw- Sems	39:6	92-2914	1	Decal - HOC R
14	92-4881-03	2	Plate - Hght Adj	39:7	92-2915	1	Decal - HOC L
15	92-4890	2	Washer - Wheel	39:8	93-7250	1	Decal-Instruction
16	92-7731	2	Plate - Baffle	39:9	94-1610	2	Grommet - Plastic
17	95-7403-03	2	Bracket-Wheel Ht Adj		95-7052	1	Plate - Chute Opening
18	40-1940	2	Washer-Wheel Bolt				
19	684776	2	6" Wheel & Tire ASM				
20	92-1099	2	Bolt-Shoulder 6" Wheel				
21	614672	2	Bolt-Shoulder				
22	614687	2	Arm-Front Spring				
23	92-1008	4	Knob-Height Adj Lever				
27	95-7412	1	Assembly - Gear Case				
28	605120	1	Grommet				
29	95-1732-03	1	Guide-Transmission				
30	65-5221	2	Screw-Thread Forming				
31	92-9665	1	Screw-Pth				



Sheet No.:3

## Engine & Blade Assembly

Ref. No.	Part No.	Qty.	Description	Ref. No.	Part No.	Qty.	Description
1	677525	1	Plate & Collar ASM	24	612782	1	Line-Gas
2	611774	3	Screw-HH	27	95-1878	1	Pulley
3	603164	1	Nut-Blade	28	104-0214	1	Screw-Set
4	95-1897	1	Tank				
6	100-6398	1	ASM-Shroud/Recoil Cover				
6:3	613329	2	Nut-Push				
6:4	99-1522	2	Strip-Foam				
6:5	99-1521	1	Strip-Foam				
8	98-8344	1	Assembly - Cap, Fuel/Oil				
9	66-7460	1	Bulb-Primer				
10	44-2750	1	Body-Primer				
11	92-1701	1	Stop-Rope				
12	95-7621	3	Screw-Pan Sems				
13	95-7417	1	Decal - Recoil				
14	92-8615	1	Applique-Shroud				
15	93-4306	1	Spring - Compression				
17		1	Engine Ay Sp E Silver				
18	612543	1	Blade-21" Whirl				
19	99-6351-03	1	Fan - Mulching				
20	314576	1	Screw-Sems				
21	306531	1	Nut-Hex S				
22	100-6385	1	Decal-Deck				
23	98-1386	1	Pad-Foam				

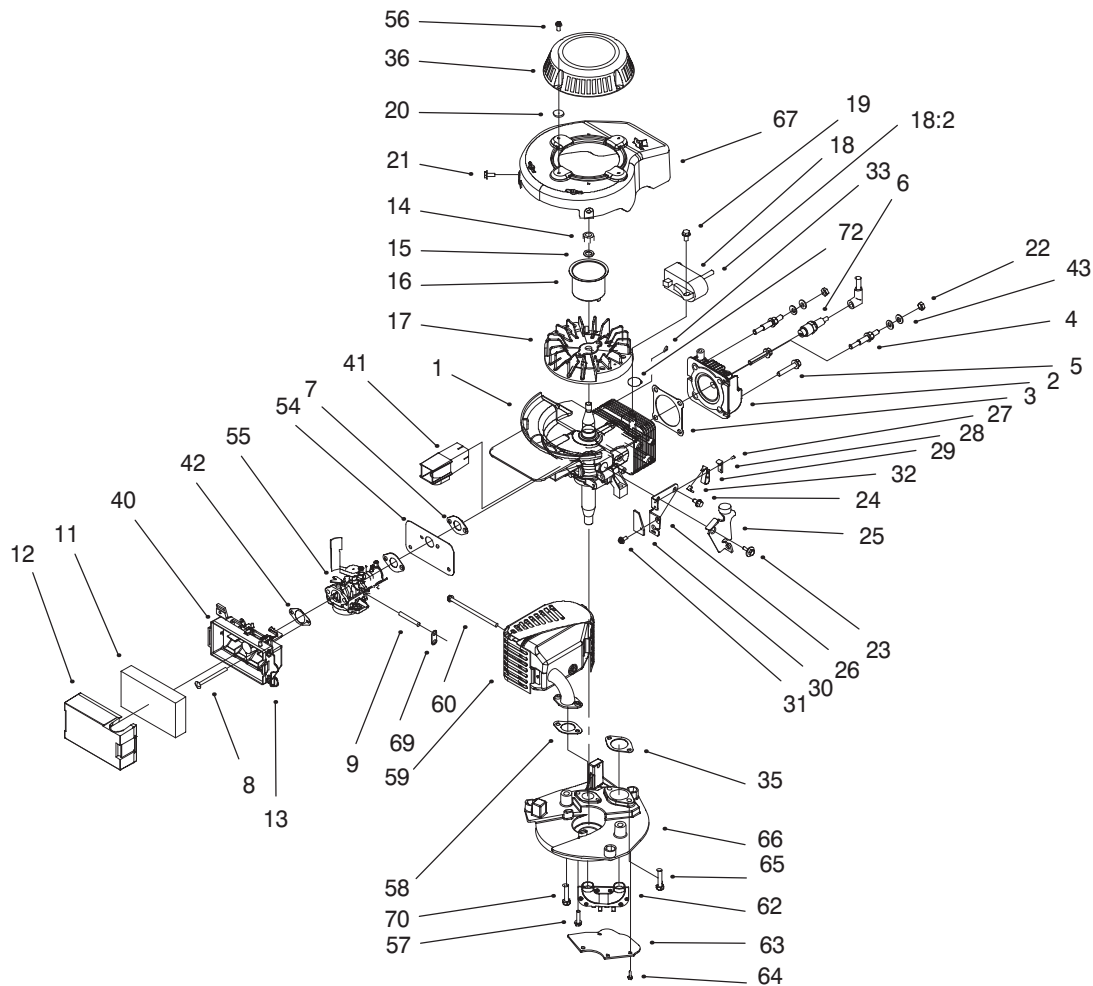


### Rear Axle Assembly

Ref. No.	Part No.	Qty.	Description
1	92-1057	2	Bolt-Shoulder
2	92-1042	2	8" Wheel & Tire ASM.
3	65-2720	4	Klip Ring-Special
4	65-4740	4	Washer-Keyed Thrust
5	66-6050	1	Key-Rocking LH
6	66-6040	1	Key-Rocking
7	65-4710	2	Ring-Friction
8	92-7746	2	ASM-Hgt Adj Arm, Rear
8:1	302-56	1	Fitting-Zerk
8:2	47-2900	1	Bushing
8:3	70-9760	1	Bushing
9	614447	2	Spacer-Axle Shaft
11	32144-85	2	Screw-HH
12	92-1004	2	Spring Arm ASM - Rear
13	603773	2	Nut-Jam, Locking
14	65-4730	2	Washer-Pivot Arm
15	65-4760	2	Washer
16	65-4750	2	Pinion-Gear, 15t
17	65-4720	2	Spring-Compression
18	94-1609	2	Cover-Wheel
19	614426	2	Washer-Stepped
20	92-1043	1	V-Belt

Ref. No.	Part No.	Qty.	Description





Sheet No.:A3

## Engine Assembly

Ref. No.	Part No.	Qty.	Description	Ref. No.	Part No.	Qty.	Description
1	95-7636	1	E-S/Block Ser.	26	84-7820	1	Plate-Brake Mtg
2	94-5776	1	Head-(Mach)	27	3290-459	2	Rivet-Plastic
3	94-5778	1	Gasket-Head	28	92-2925	1	Strap-Insulation
4	94-5779	2	Stud	29	60-9010	1	Strap-Ground
5	94-5780	2	Bolt - Head	30	100-2929	1	Stop-Gr Strap
6	50-1170	1	Plug-Spark	31	12-5450	1	Screw-Special
7	94-5795	2	Gasket-Intake	32	98-7037	1	Wire - Lead
8	612507	2	Screw	33	607199	1	Key
9	44-3170	1	Primer Hose	35	95-1778	1	Gasket-Exhaust
11	95-5574	1	Filter-Air	36	100-2908	1	Starter Assy Sm
12	95-5577	1	Cover-Air Filter	40	95-5588	1	Base Ay-(Air Filter)
13	610383	1	Retainer-Fil.	41	95-5578	1	Tunnel
14	130743	1	Nut	42	95-7613	1	Gasket-Filter
15	316959	1	Washer-Lock	43	3290-456	4	Washer-Belleville
16	612949	1	Hub Starter	54	98-1388	1	Shield - Carb.
17	95-1866	1	Flywheel-Machined	55	98-7042	1	Carburetor ASM With Gaskets
18	99-2916	1	Ignition-Cd	56	98-4484	4	Screw Sems
18:2	681678	1	Ht Lead&cover	57	613208	2	Screw-Cd Mtg
18:2	684698	1	Cover & Term. Ay	58	98-1392	1	Gasket
19	613208	2	Screw-Cd Mtg	59	100-9514	1	Muffler And Guard ASM
20	98-4478	4	Spacer	60	611228	1	Bolt-Console
21	321-4	2	Screw-HH	62	98-1557	1	Pipe-Transfer
22	146501	2	Nut	63	98-1591	1	Cover-Muffler
23	95-1870	1	Screw-Shoulder	64	700822	4	Screw-HH
24	95-1871	1	Screw-HWH				
25	93-4312	1	Brake Plate Ay				











