



## Idler Kit

### Blower Kit for GrandStand® Multi Force Mower

Model No. 139-1546

## Installation Instructions

# Installation

## Loose Parts

Use the chart below to verify that all parts have been shipped.

Description	Qty.	Use
No parts required	–	Prepare the machine.
Idler pulley	1	Install the kit.
Hex-flange head bolt	1	
Spacer	1	
Mounting bracket	1	
Carriage bolt	2	
Nut	3	
Plate	1	

## Preparing the Machine

1. Park the machine on a level surface.
2. Disengage the PTO, engage the parking brake, and move the motion-control levers outward to the NEUTRAL-LOCK position.
3. Shut off the engine and remove the key.



# Installing the Kit

1. Secure the idler pulley to the mounting bracket using the hex-flange head bolt, and spacer (Figure 1). Torque the bolt to 37 to 45 N·m (27 to 33 ft-lb).

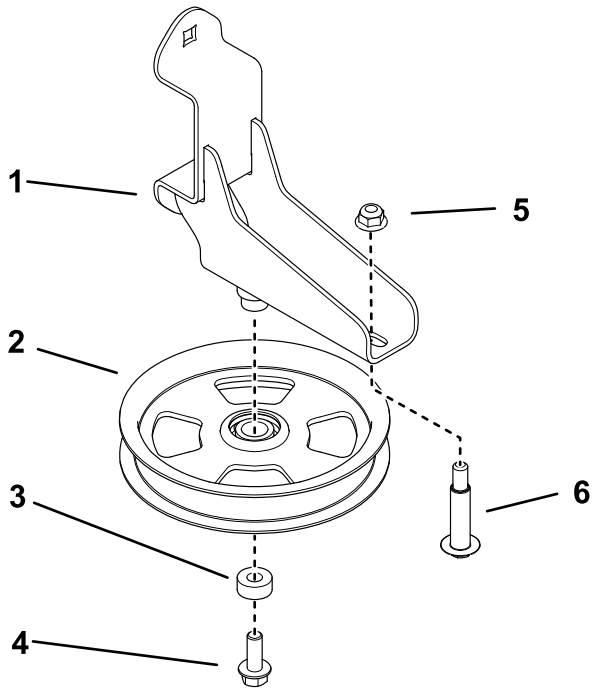
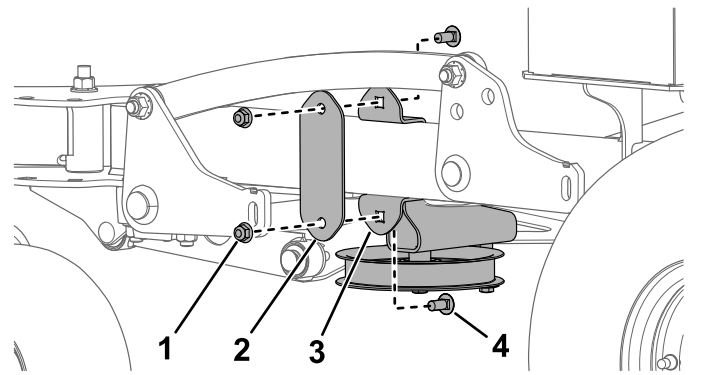


Figure 1

g294691

- |                     |                         |
|---------------------|-------------------------|
| 1. Mounting bracket | 4. Hex-flange head bolt |
| 2. Idler pulley     | 5. Nut                  |
| 3. Spacer           | 6. Shoulder bolt        |

2. Install the shoulder bolt to the mounting bracket using a nut (Figure 1). Torque the bolt to 37 to 45 N·m (27 to 33 ft-lb).
3. Secure the mounting bracket to the left machine frame tube, between the plates welded to the tube, using the plate, 2 carriage bolts, and 2 nuts (Figure 2). Torque the bolts to 37 to 45 N·m (27 to 33 ft-lb).



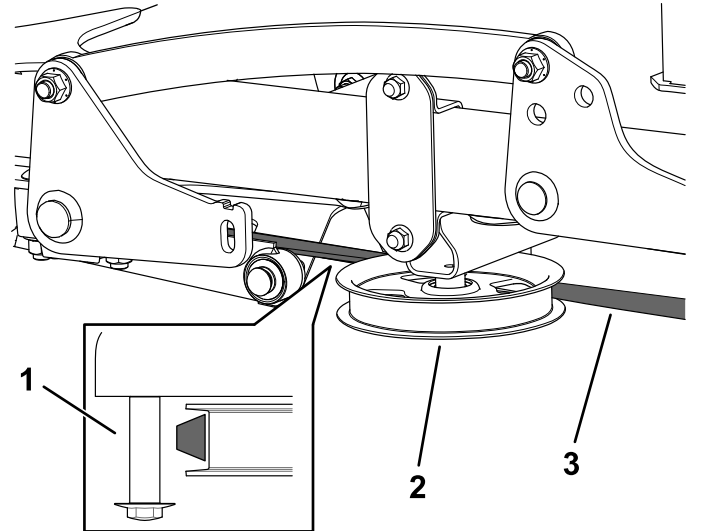
g293527

Figure 2

- |            |                     |
|------------|---------------------|
| 1. Nut (2) | 3. Mounting bracket |
| 2. Plate   | 4. Carriage bolt    |

4. Route the belt to the idler pulley (Figure 3).

**Important:** Ensure that the wide side of the belt contacts the pulley as shown in Figure 3. Use the shoulder bolt as a guide for the belt.



g293529

Figure 3

- |                  |         |
|------------------|---------|
| 1. Shoulder bolt | 3. Belt |
| 2. Idler pulley  |         |