



Front Scraper Kit for Narrow Wiehle Roller

21in DPA Greensmaster® Cutting Reel

Model No. 125-3503

Model No. 125-3504

Model No. 125-3505

Model No. 139-4385

Model No. 139-4394

Model No. 139-4398

Model No. 139-7406

Installation Instructions

Installation

1

Preparing the Machine

No Parts Required

Procedure

Refer to your cutting unit *Operator's Manual* for instructions to prepare the machine and cutting unit for installation.

2

Installing the Scraper

Parts needed for this procedure:

1	Scraper
2	Bolt
2	Nut
2	Clamp

Procedure

1. Remove the plow bolt, washer, and nut securing one of the height-of-cut arms to the cutting unit, side plate ([Figure 1](#)).
2. Loosen the roller mounting screws in the height-of-cut arms ([Figure 1](#)).
3. Slide the height-of-cut arm off the roller shaft ([Figure 1](#)).



- Slide the roller shaft out of the height-of-cut arm on the opposite end of the cutting unit.

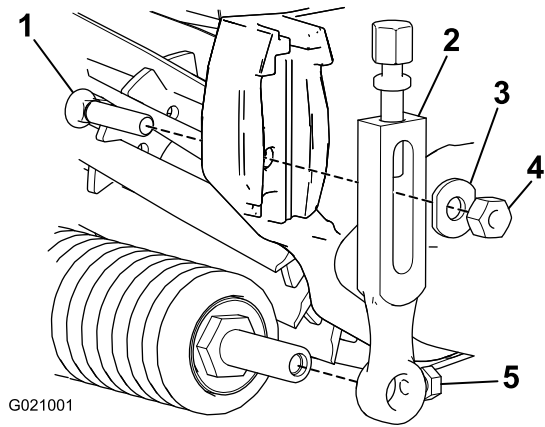


Figure 1

- | | |
|----------------------|--------------------------|
| 1. Plow bolt | 4. Nut |
| 2. Height-of-cut arm | 5. Roller mounting screw |
| 3. Washer | |

- Insert a shaft clamp onto each end of the roller shaft ([Figure 2](#)).

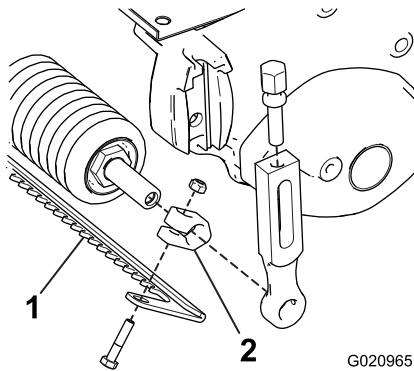


Figure 2

- | | |
|------------|----------------|
| 1. Scraper | 2. Shaft clamp |
|------------|----------------|

- Loosely install the roller to the cutting unit with the height-of-cut arm and fasteners previously removed.
- Adjust to the desired height of cut and tighten height-of-cut arm mounting fasteners.
- Position the scraper between the front roller and the cutting unit as shown in [Figure 2](#).
- Loosely install the scraper to each clamp with a bolt and nut ([Figure 2](#)). Do not tighten.
- Center the scraper on the roller.
- Move the scraper in or out until the desired roller clearance is attained.

Important: The scraper must not contact the roller. Ensure that the scraper is parallel to the roller.

- Tighten the bolts and nuts securing the clamps to the roller shaft. Torque them to 11 N·m (96 in-lb).
- Center the roller and scraper between the height-of-cut arms.
- Tighten the roller mounting screws.