



Count on it.

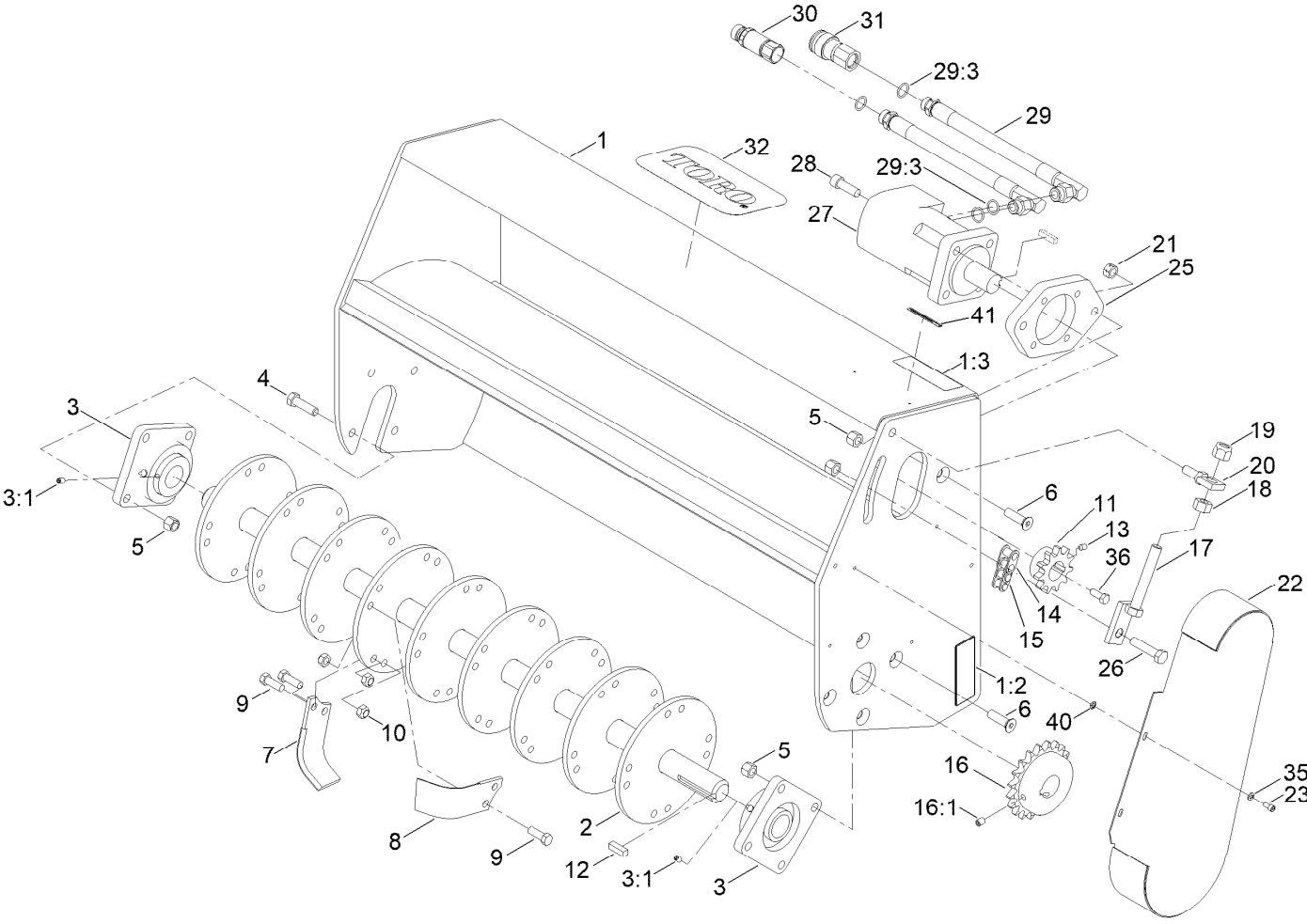
Parts Catalog

**40in Tiller
Compact Tool Carrier**

Model No. 22445—Serial No. 318000001 and Up



40 Inch Tiller Assembly

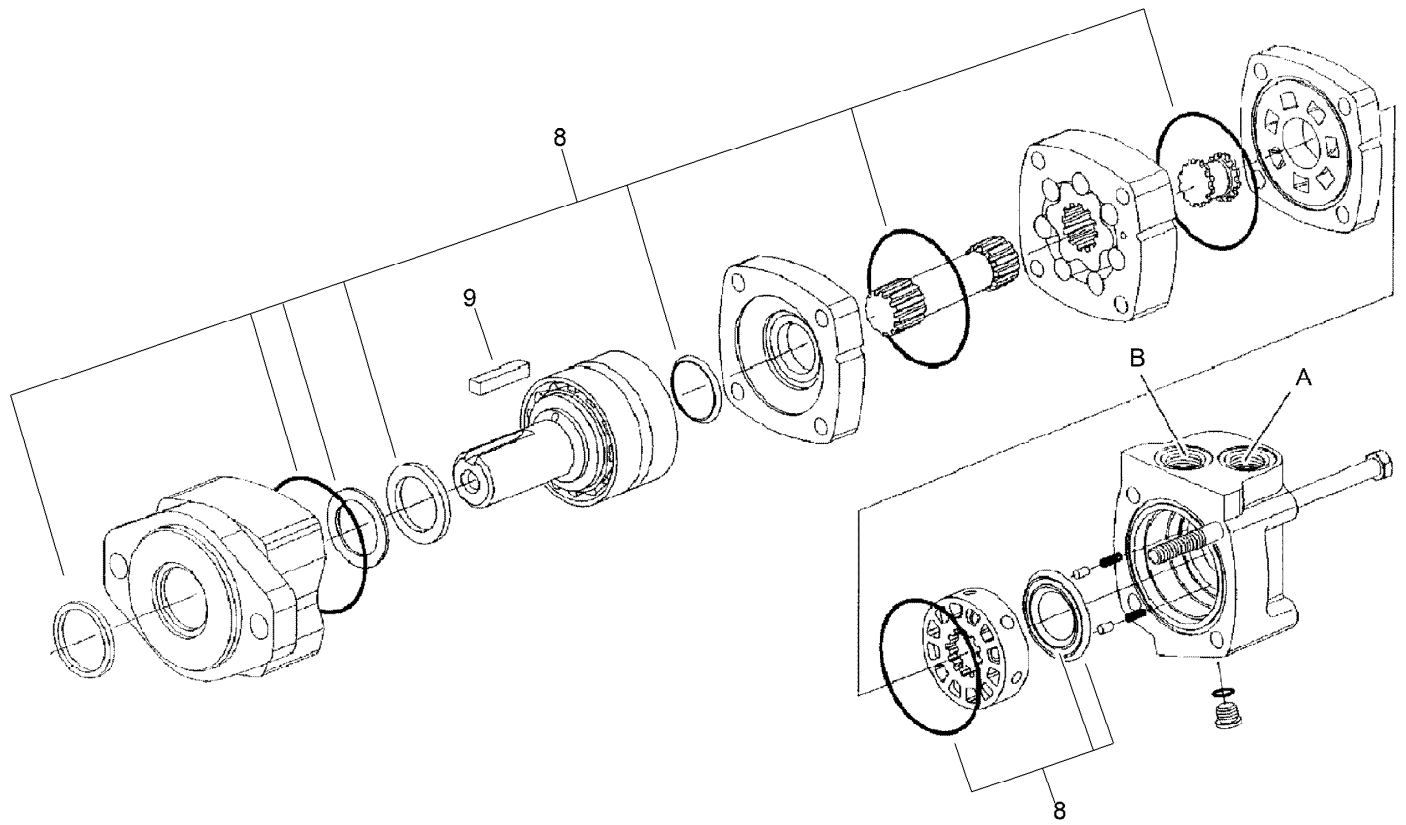


40 Inch Tiller Assembly (continued)

<i>Ref.</i>	<i>Part Number</i>	<i>Qty.</i>	<i>Description</i>	<i>Ref.</i>	<i>Part Number</i>	<i>Qty.</i>	<i>Description</i>
1	104-6263	1	Tiller Frame ASM	18	3217-11	1	Nut-Hex
1:2	93-7321	2	Decal-Danger	19	3296-53	1	Nut-Lock, NI
1:3	107-9366	1	Decal-Warning	20	99-5044	1	Holder-Adjustment
2	98-9087	1	Shaft-Tine	21	104-6266	1	Nut-Side Deform
3	99-9979	2	Bearing ASM	22	98-9071	1	Cover-Chain, Tiller
3:1	3246-17	2	Setscrew-HSH	23	3274-52	4	Screw-HSH
4	325-7	4	Screw-HH	25	98-9070	1	Plate-Mount, Motor
5	3296-23	10	Nut-Lock, NI	26	325-9	1	Screw-HH
6	98-9931	5	Bolt	27	98-9084	1	Motor-HYD
7	104-2043	18	Tine-RH	28	3274-4	4	Screw-HSH
8	104-2044	18	Tine-LH	29	104-6207	2	HYD Hose ASM
9	324-29	72	Screw-HH	29:3	237-80	2	O-Ring
10	32152-9	72	Nut-Hex	30	100-4701	1	Nipple-Connect, Pressure
11	98-9085	1	Sprocket-11 Tooth	30:1	100-6120	1	Seal Kit ●
12	98-9935	1	Key-Square	31	104-6134	1	Coupler-Face, Flush
13	3246-4	2	Screw-Set	32	92-1242	1	Decal
14	98-9088	1	Chain-Roller	35	3253-3	4	Washer-Lock
15	98-9089	1	Link-Connecting	36	323-6	1	Screw-HH
16	98-9086	1	Sprocket-20 Tooth	40	1-803037	4	Nut-Retaining
16:1	3274-3	2	Screw-HSH	41	133-8061	1	Decal-Warning
17	98-9082	1	Chain Adjustment ASM				

● Not illustrated

Hydraulic Motor Assembly No. 98-9084



Hydraulic Motor Assembly No. 98-9084 (continued)

<i>Ref.</i>	<i>Part Number</i>	<i>Qty.</i>	<i>Description</i>
8	56-6890	1	Seal Kit
9	AUH415604	1	Key-Sq

Notes:

Notes:



Count on it.