



Count on it.

Parts Catalog

**Auger Bit
Compact Utility Loader**

Model No. 22810

Model No. 22811

Model No. 22812

Model No. 22813

Model No. 22814

Model No. 22815

Model No. 22816



Ordering Replacement Parts

To order replacement parts, please supply the part number, the quantity, and the description of each part desired.

Understanding Reference Numbers

Each identified part in an illustration has a reference number. The reference number for a part also appears in the parts list, along with other information about the part.

This catalog uses two special reference number formats, one to indicate parts in a service assembly and another to indicate the quantity of a given part in an illustration.

Service Assembly Reference Numbers

Parts in service assemblies have reference numbers in the form a:b. The a represents the reference number of the entire service assembly and the b represents a sequential number unique to each part within the service assembly.

For example, a wheel assembly might be identified by reference number 6, the tire by 6:1, the valve by 6:2, and the wheel by 6:3. When you order the assembly identified by reference number 6, you receive all parts identified by reference numbers 6:1, 6:2, and 6:3. However, you may also order any part individually. Reference numbers of this type appear in illustration and in parts lists.

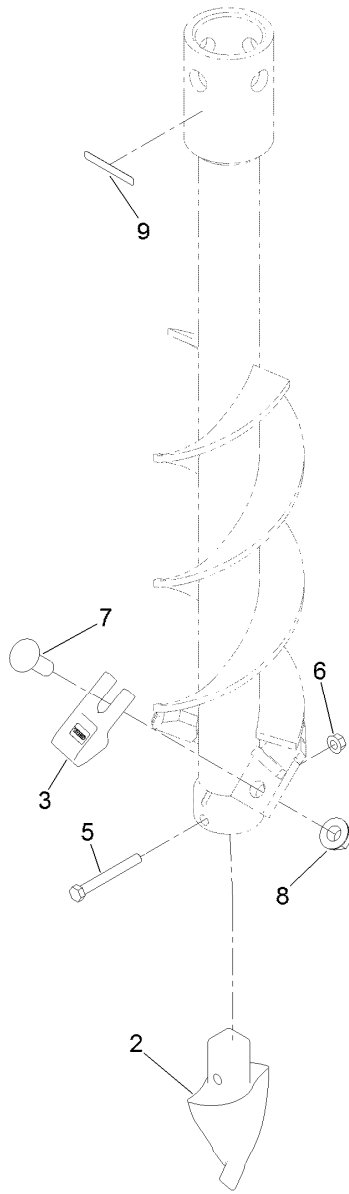
Reference Numbers Indicating Quantity

In an illustration, if a reference number indicates more than one part, the reference number has the form nX y. The n represents the quantity of the part, the X is the multiplication symbol, and the y represents the reference number.

For example, in an illustration, the reference number 2X 37 means that two of the parts identified by reference number 37 are indicated.

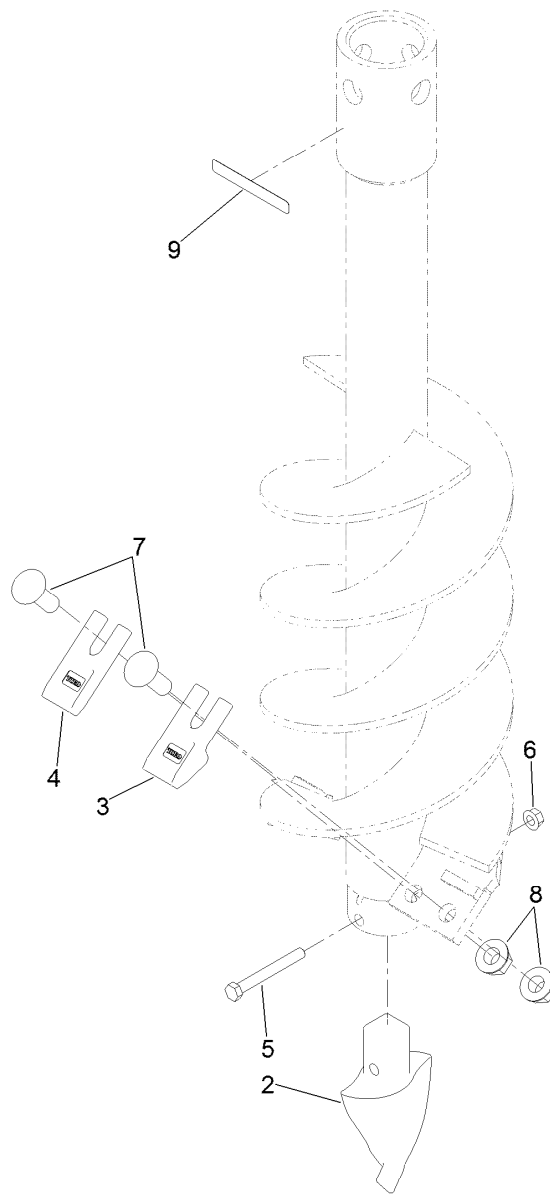
Contents

6-Inch Auger Bit Assembly	4
9-Inch Auger Bit Assembly	5
12-Inch Auger Bit Assembly	6
15-Inch Auger Bit Assembly	7
18-Inch Auger Bit Assembly	8
24-Inch Auger Bit Assembly	9
30-Inch Auger Bit Assembly	10
Attachments and Accessories	11



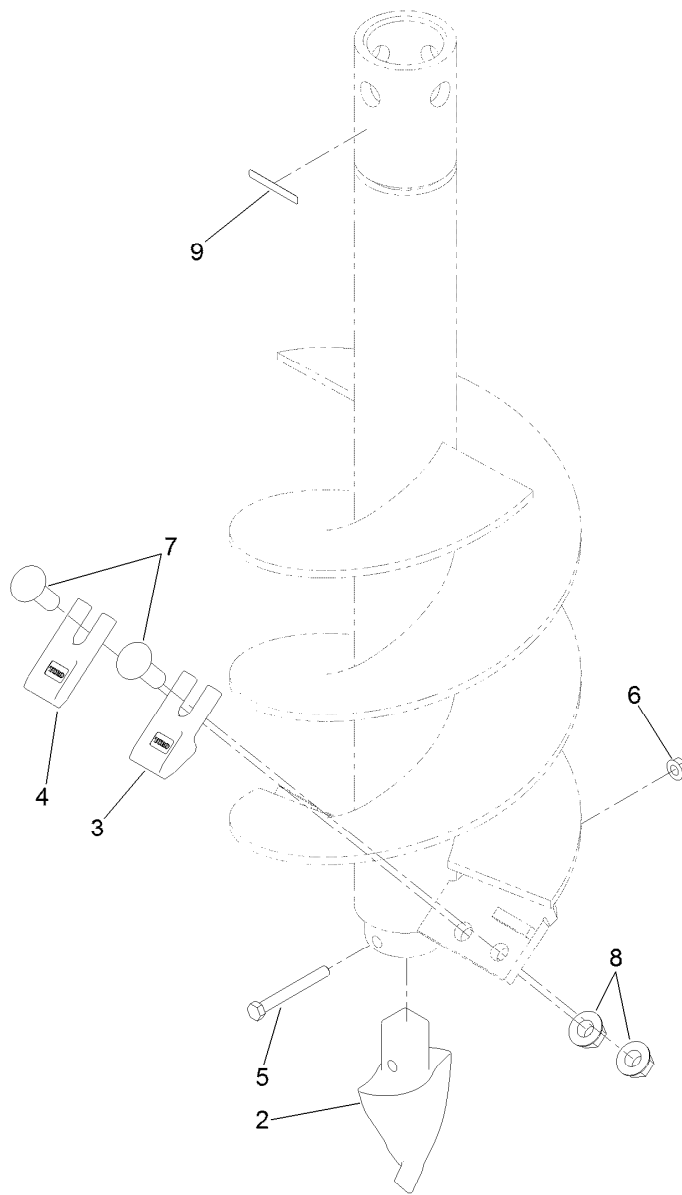
6-Inch Auger Bit Assembly

<i>Ref.</i>	<i>Part Number</i>	<i>Qty.</i>	<i>Description</i>
2	107-9314	1	Pilot-Auger
3	107-9313	2	Tooth-Outer
5	323-20	1	Screw-HH
6	32128-21	1	Nut-HF
7	3233-20	2	Screw-CARR
8	32128-50	2	Nut-Flange
9	133-8061	1	Decal-Warning



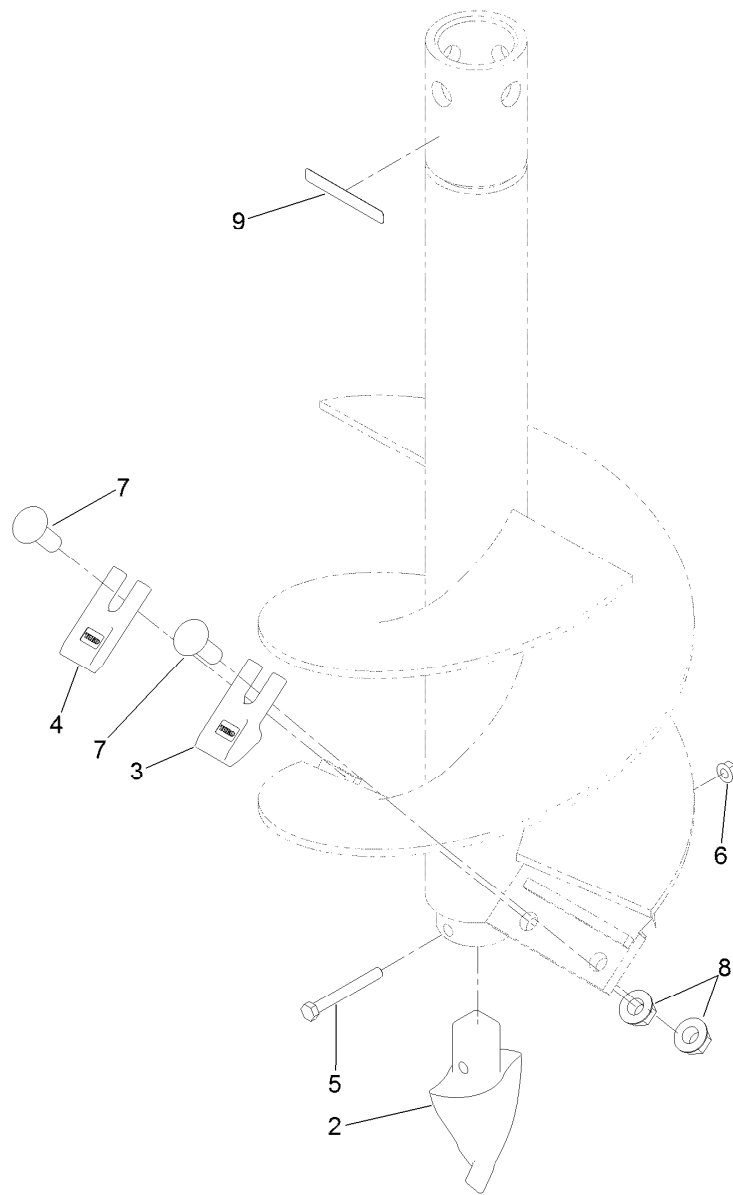
9-Inch Auger Bit Assembly

<i>Ref.</i>	<i>Part Number</i>	<i>Qty.</i>	<i>Description</i>
2	107-9314	1	Pilot-Auger
3	107-9313	2	Tooth-Outer
4	107-9312	1	Tooth-Inner
5	323-20	1	Screw-HH
6	32128-21	1	Nut-HF
7	3233-20	3	Screw-CARR
8	32128-50	3	Nut-Flange
9	133-8061	1	Decal-Warning



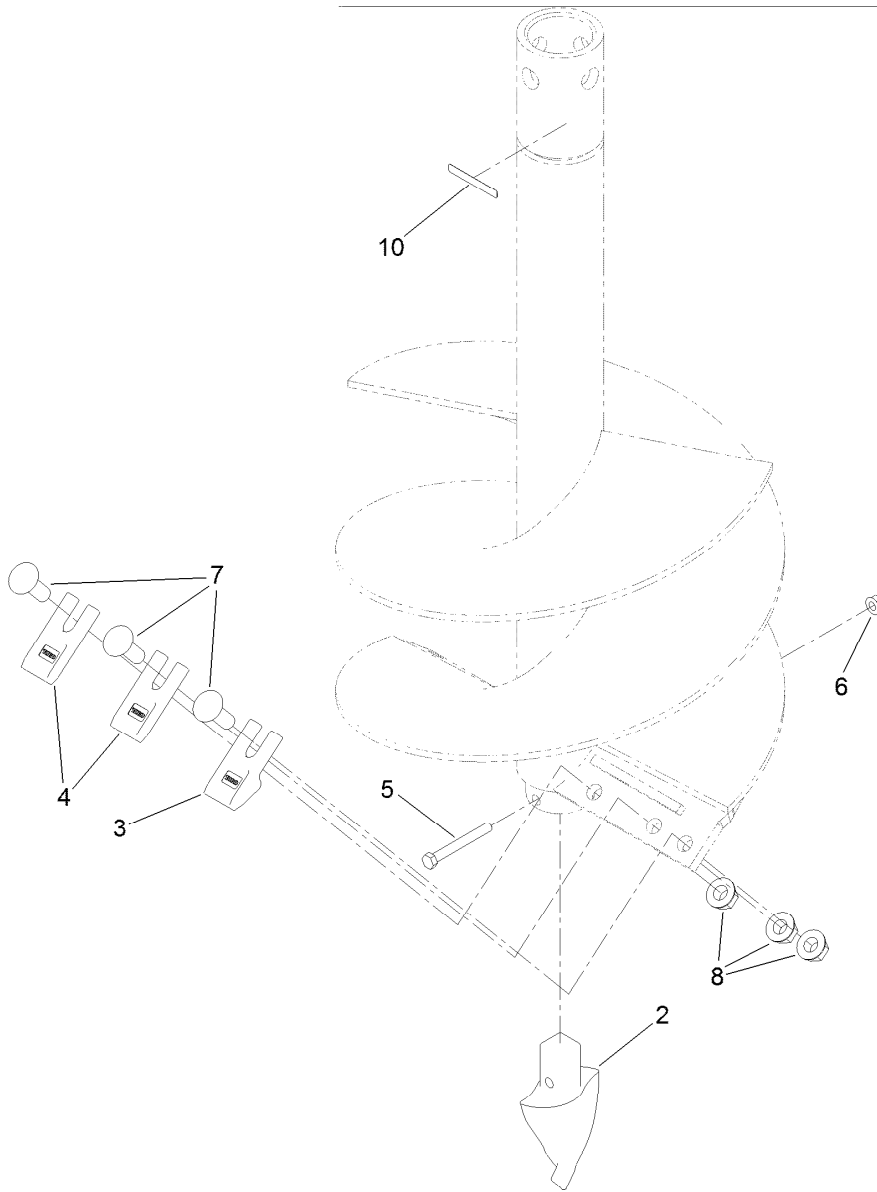
12-Inch Auger Bit Assembly

<i>Ref.</i>	<i>Part Number</i>	<i>Qty.</i>	<i>Description</i>
2	107-9314	1	Pilot-Auger
3	107-9313	2	Tooth-Outer
4	107-9312	2	Tooth-Inner
5	323-20	1	Screw-HH
6	32128-21	1	Nut-HF
7	3233-20	4	Screw-CARR
8	32128-50	4	Nut-Flange
9	133-8061	1	Decal-Warning



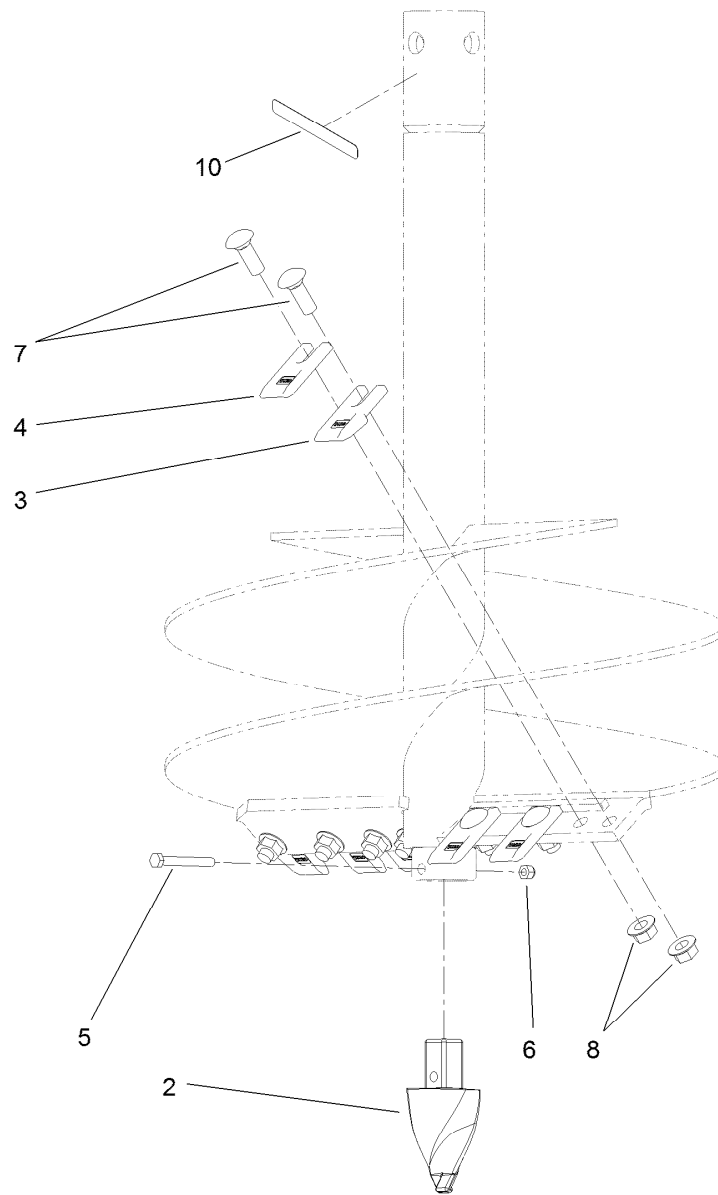
15-Inch Auger Bit Assembly

<i>Ref.</i>	<i>Part Number</i>	<i>Qty.</i>	<i>Description</i>
2	107-9314	1	Pilot-Auger
3	107-9313	2	Tooth-Outer
4	107-9312	3	Tooth-Inner
5	323-20	1	Screw-HH
6	32128-21	1	Nut-HF
7	3233-20	5	Screw-CARR
8	32128-50	5	Nut-Flange
9	133-8061	1	Decal-Warning



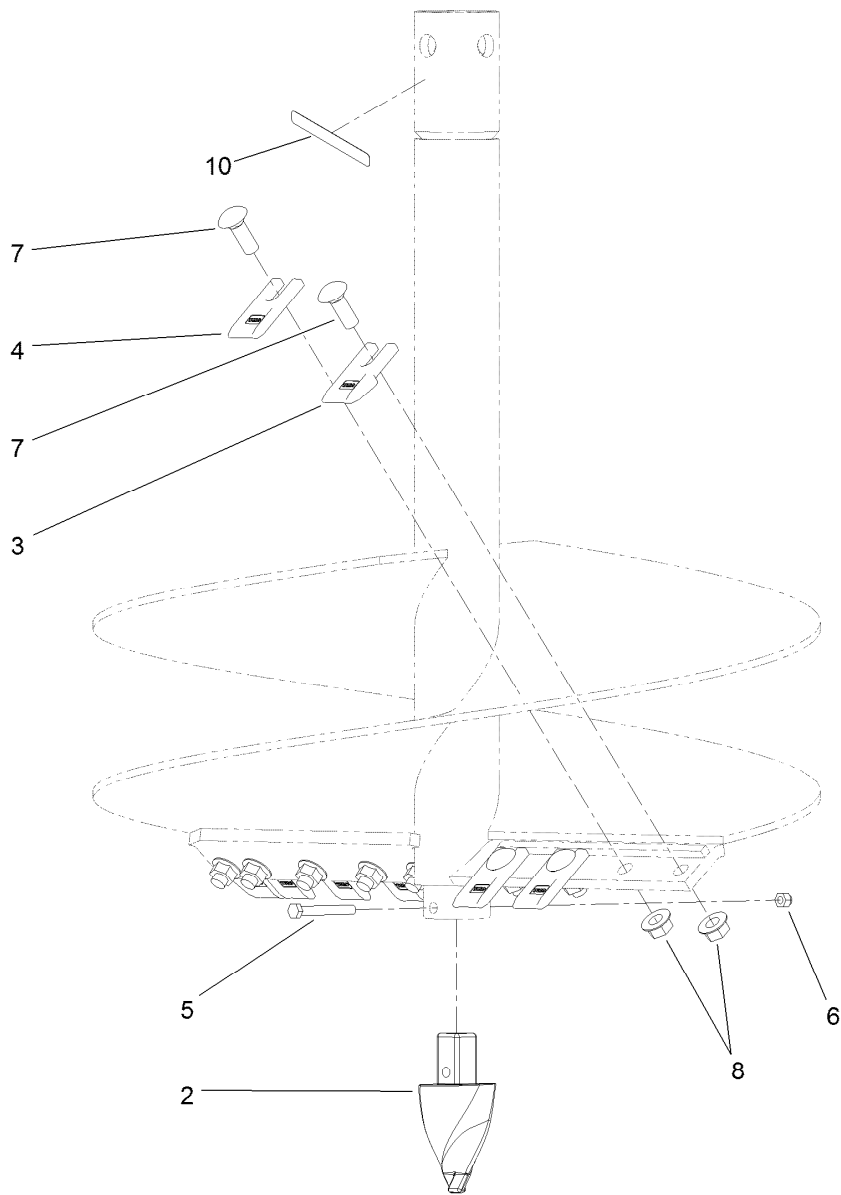
18-Inch Auger Bit Assembly

<i>Ref.</i>	<i>Part Number</i>	<i>Qty.</i>	<i>Description</i>
2	107-9314	1	Pilot-Auger
3	107-9313	2	Tooth-Outer
4	107-9312	4	Tooth-Inner
5	323-20	1	Screw-HH
6	32128-21	1	Nut-HF
7	3233-20	6	Screw-CARR
8	32128-50	6	Nut-Flange
10	133-8061	1	Decal-Warning



24-Inch Auger Bit Assembly

<i>Ref.</i>	<i>Part Number</i>	<i>Qty.</i>	<i>Description</i>
2	107-9314	1	Pilot-Auger
3	107-9313	2	Tooth-Outer
4	107-9312	6	Tooth-Inner
5	323-20	1	Screw-HH
6	32128-21	1	Nut-HF
7	3233-20	8	Screw-CARR
8	32128-50	8	Nut-Flange
10	133-8061	1	Decal-Warning



30-Inch Auger Bit Assembly

<i>Ref.</i>	<i>Part Number</i>	<i>Qty.</i>	<i>Description</i>
2	107-9314	1	Pilot-Auger
3	107-9313	2	Tooth-Outer
4	107-9312	7	Tooth-Inner
5	323-20	1	Screw-HH
6	32128-21	1	Nut-HF
7	3233-20	9	Screw-CARR
8	32128-50	9	Nut-Flange
10	133-8061	1	Decal-Warning

Attachments and Accessories

For 22810 Auger Bit Compact Utility Loader

Product Name	Model/Part
Tooth-Wisdom, Carbide	104-5996
Tooth-Chisel, Carbide	104-5997
Pilot-Hardfaced.....	104-5998

For 22811 Auger Bit Compact Utility Loader

Product Name	Model/Part
Tooth-Wisdom, Carbide	104-5996
Tooth-Chisel, Carbide	104-5997
Pilot-Hardfaced.....	104-5998

For 22812 Auger Bit Compact Utility Loader

Product Name	Model/Part
Tooth-Wisdom, Carbide	104-5996
Tooth-Chisel, Carbide	104-5997
Pilot-Hardfaced.....	104-5998

For 22813 Auger Bit Compact Utility Loader

Product Name	Model/Part
Tooth-Wisdom, Carbide	104-5996
Tooth-Chisel, Carbide	104-5997
Pilot-Hardfaced.....	104-5998

For 22814 Auger Bit Compact Utility Loader

Product Name	Model/Part
Tooth-Wisdom, Carbide	104-5996
Tooth-Chisel, Carbide	104-5997
Pilot-Hardfaced.....	104-5998

For 22815 Auger Bit Compact Utility Loader

Product Name	Model/Part
Tooth-Wisdom, Carbide	104-5996
Tooth-Chisel, Carbide	104-5997
Pilot-Hardfaced.....	104-5998

For 22816 Auger Bit Compact Utility Loader

Product Name	Model/Part
---------------------	-------------------

Attachments and Accessories (continued)

Tooth-Wisdom, Carbide	104-5996
Tooth-Chisel, Carbide	104-5997
Pilot-Hardfaced.....	104-5998

Notes:

Notes:

Notes:



Count on it.