



Count on it.

Parts Catalog

**Soil Cultivator
Compact Tool Carrier**

Model No. 23102—Serial No. 318000001 and Up



Ordering Replacement Parts

To order replacement parts, please supply the part number, the quantity, and the description of each part desired.

Understanding Reference Numbers

Each identified part in an illustration has a reference number. The reference number for a part also appears in the parts list, along with other information about the part.

This catalog uses two special reference number formats, one to indicate parts in a service assembly and another to indicate the quantity of a given part in an illustration.

Service Assembly Reference Numbers

Parts in service assemblies have reference numbers in the form a:b. The a represents the reference number of the entire service assembly and the b represents a sequential number unique to each part within the service assembly.

For example, a wheel assembly might be identified by reference number 6, the tire by 6:1, the valve by 6:2, and the wheel by 6:3. When you order the assembly identified by reference number 6, you receive all parts identified by reference numbers 6:1, 6:2, and 6:3. However, you may also order any part individually. Reference numbers of this type appear in illustration and in parts lists.

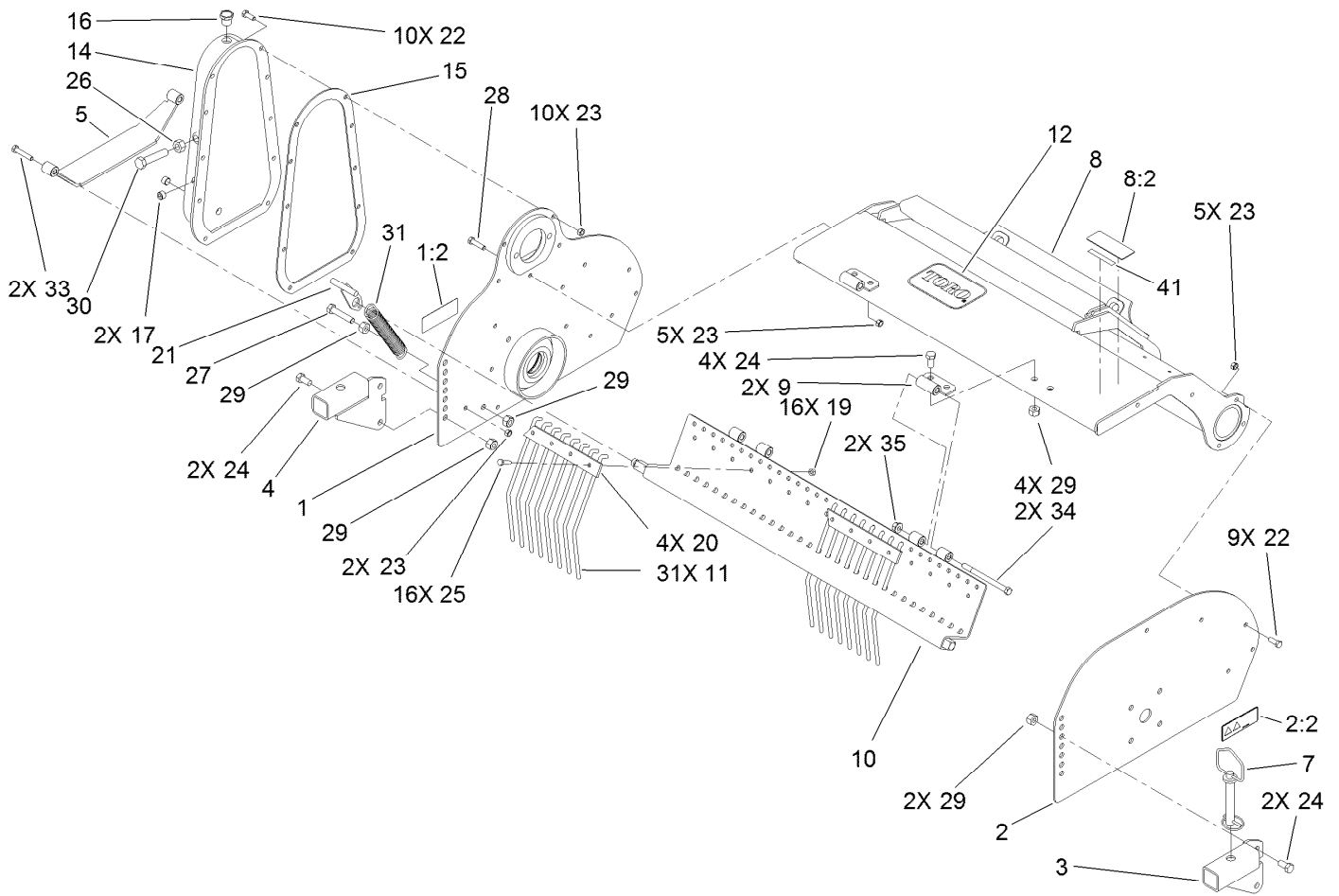
Reference Numbers Indicating Quantity

In an illustration, if a reference number indicates more than one part, the reference number has the form nX y. The n represents the quantity of the part, the X is the multiplication symbol, and the y represents the reference number.

For example, in an illustration, the reference number 2X 37 means that two of the parts identified by reference number 37 are indicated.

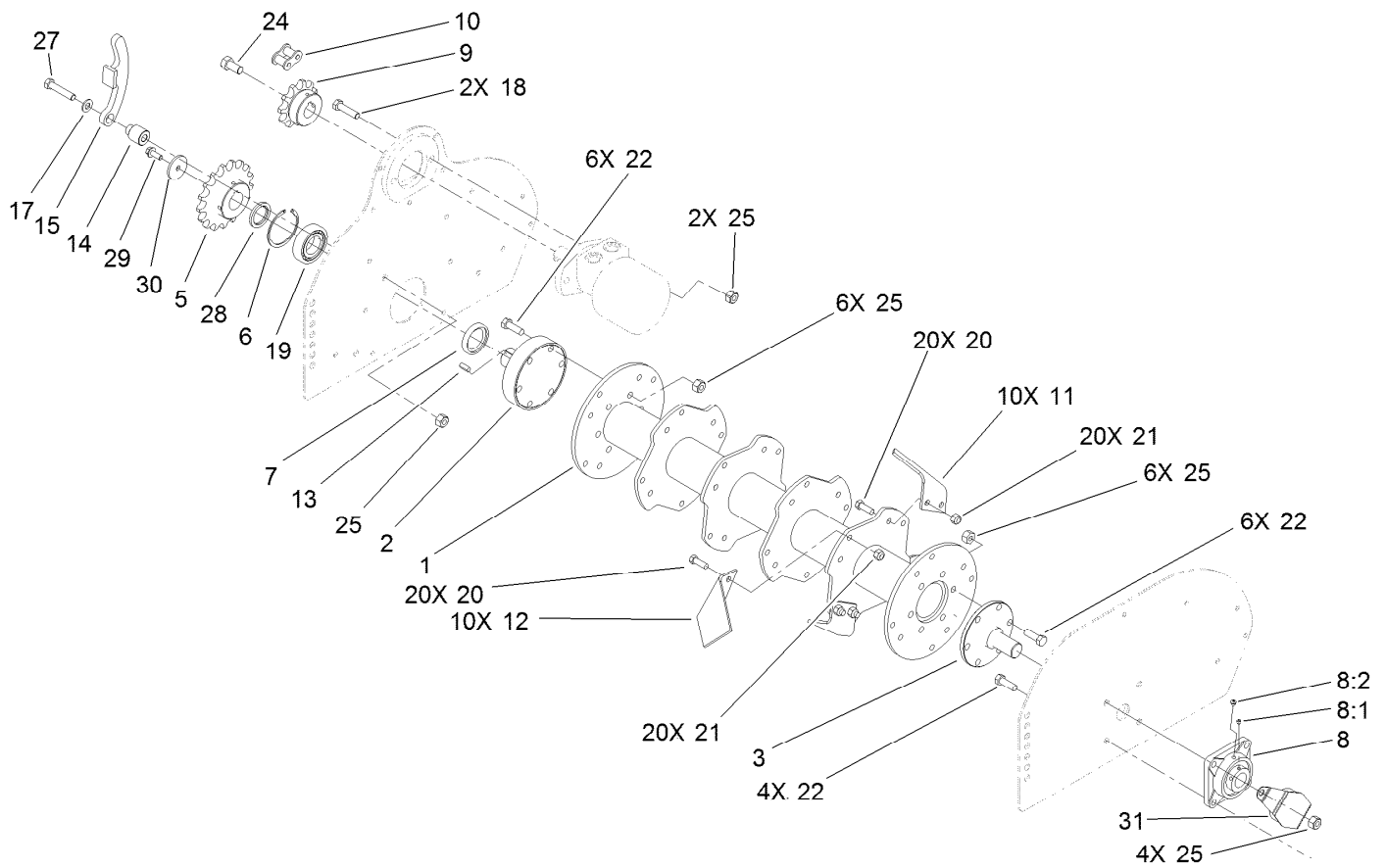
Contents

Frame Assembly.....	4
Rotor Blade Drive Assembly.....	5
Roller Frame and Grader Assembly.....	6
Hydraulic Hose and Motor Assembly.....	7
Hydraulic Motor Assembly No. 105-4573.....	8



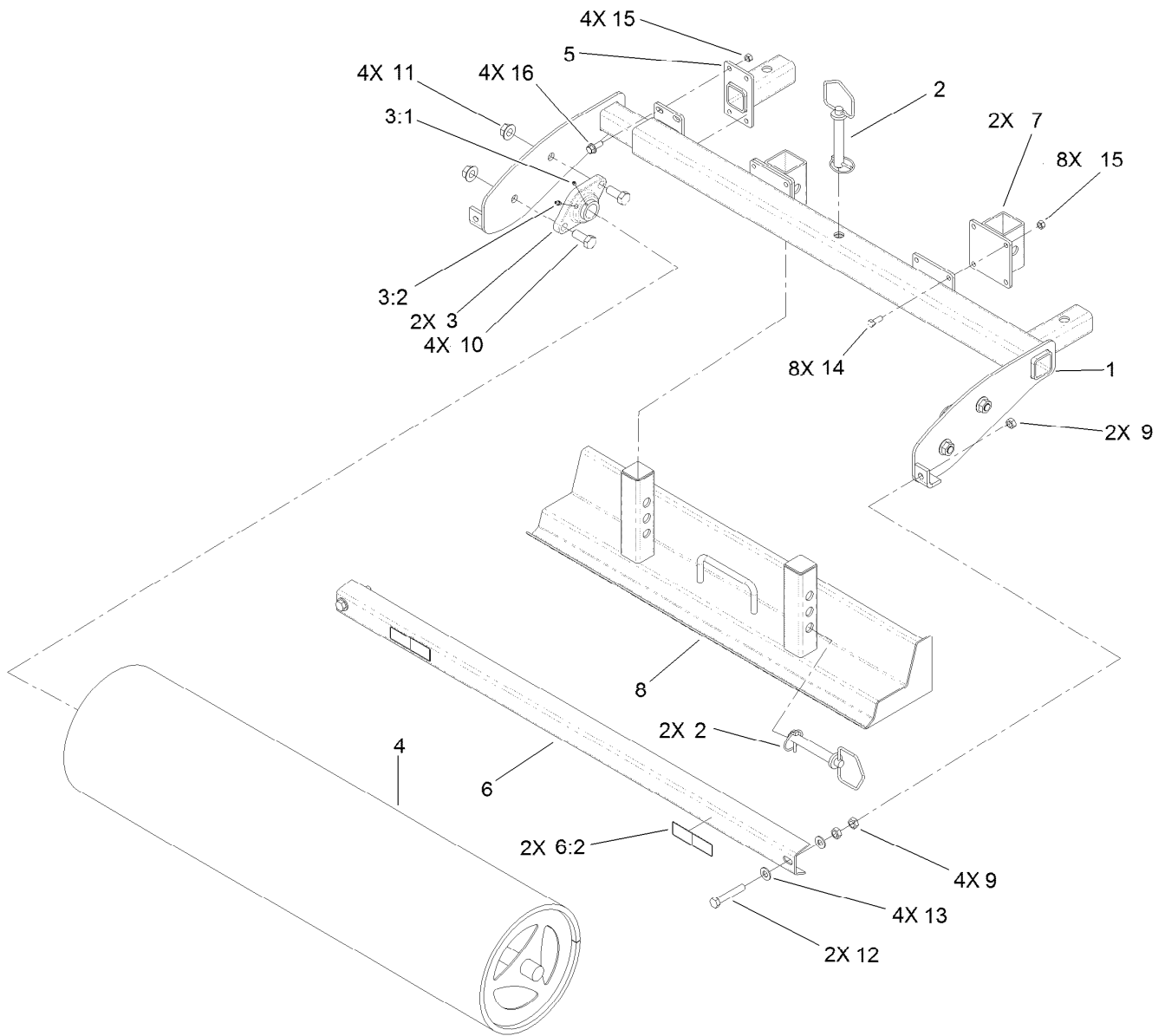
Frame Assembly

Ref.	Part Number	Qty.	Description	Ref.	Part Number	Qty.	Description
1	114-7879	1	Left Side ASM	19	3296-29	16	Nut-Lock, NI
1:2	93-7321	1	Decal-Danger	20	114-7843	4	Plate-Retaining, Tine
2	114-7877	1	Right Side ASM	21	114-7831	1	Handle-Spring
2:2	93-7321	1	Decal-Danger	22	323-6	19	Screw-HH
3	114-1414	1	Plate-Fitting, Right	23	125-5069	22	Nut-Hex
4	114-1418	1	Plate-Fitting, Left	24	325-5	8	Screw-HH
5	114-1419	1	Plate-Protector	25	322-6	16	Screw-HH
7	114-7854	2	Pin-Drift	26	3217-11	1	Nut-Hex
8	114-7878	1	Frame Chasis ASM	27	325-10	1	Screw-HH
8:2	100-4708	1	Decal-Warning	28	323-8	1	Screw-HH
9	114-1430	2	Hinge	29	3296-25	10	Nut-Lock, NI
10	114-1433	1	Plate-Rod, Screening	30	115-4841	1	Screw-HH
11	114-1439	31	Rod-Screening	31	114-7888	1	Spring-Extension
12	62-7400	1	Decal	33	323-10	2	Screw-HH
14	114-7846	1	Case-Chain	34	3212-26	2	Screw-HH
15	114-7848	1	Gasket-Cork	35	32128-48	2	Nut-Lock, HHF
16	114-7847	1	Plug	41	133-8061	1	Decal-Warning
17	114-7853	2	Plug				



Rotor Blade Drive Assembly

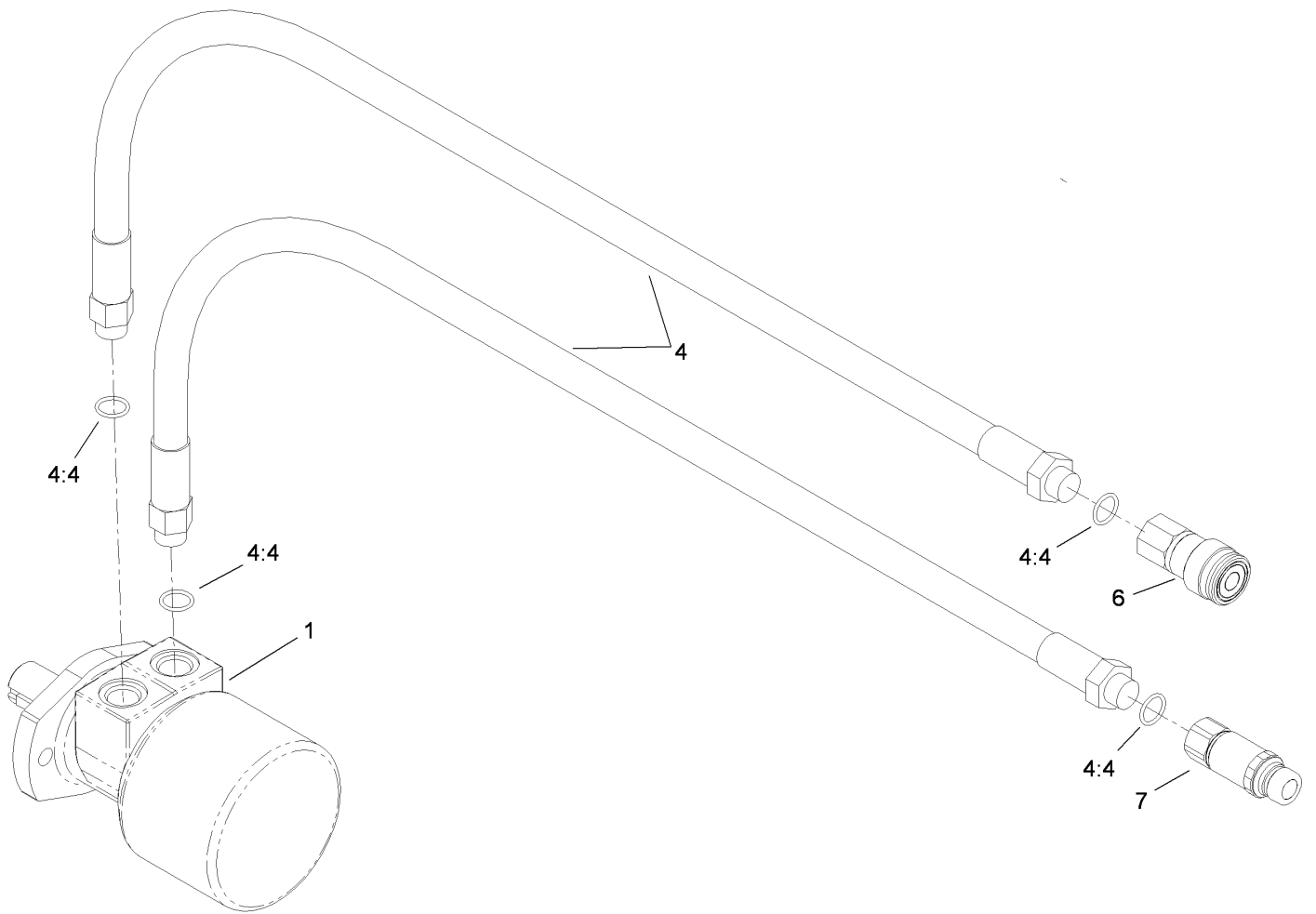
<i>Ref.</i>	<i>Part Number</i>	<i>Qty.</i>	<i>Description</i>	<i>Ref.</i>	<i>Part Number</i>	<i>Qty.</i>	<i>Description</i>
1	114-1440	1	Rotor	15	114-7805	1	Tightener-Chain
2	114-1444	1	Shaft-Drive	17	3256-26	1	Washer-Flat
3	114-1449	1	Plate-Disc	18	325-8	2	Screw-HH
5	114-7856	1	Gear-17 Tooth	19	251-344	1	Bearing-Ball
6	114-7857	1	Ring-Retaining	20	324-29	40	Screw-HH
7	114-7858	1	Seal-Shaft	21	32152-9	40	Nut-Hex
8	114-7860	1	Bearing ASM	22	325-7	16	Screw-HH
8:1	106-9662	1	Screw-Set, HSH	24	3214-2	1	Screw-HH
8:2	114-7896	1	Fitting -Grease	25	3296-25	19	Nut-Lock, NI
9	115-4578	1	Sprocket ASM-Welded	27	325-11	1	Screw-HH
10	114-7849	1	Chain-Roller	28	115-4574	1	Spacer-Bearing
11	114-7800	10	Blade-Left	29	3234-42	1	Screw-HHF
12	114-7801	10	Blade-Right	30	115-4576	1	Plate-Cover, Sprocket
13	98-9935	1	Key-Square	31	115-4065	1	Cover-Bearing
14	114-7804	1	Bracing-Tubular				



Roller Frame and Grader Assembly

Ref.	Part Number	Qty.	Description
1	114-7808	1	Roller Frame ASM
2	114-7854	3	Pin-Drift
3	114-7867	2	Bearing ASM
3:1	3245-35	1	Screw-Set, HSH
3:2	302-5	1	Fitting-Grease
4	114-7835	1	Roller-Mesh
5	115-4590	1	Arm-Male
6	114-7845	1	Scraper Plate ASM
6:2	108-1287	2	Decal-Warning
7	114-7899	2	Scraper Guide ASM

Ref.	Part Number	Qty.	Description
8	114-7827	1	Blade-Grader
9	32153-5	6	Nut-Hex
10	327-4	4	Screw-HH
11	32128-50	4	Nut-Flange
12	325-14	2	Screw-HH
13	3256-26	4	Washer-Flat
14	323-6	8	Screw-HH
15	125-5069	12	Nut-Hex
16	3234-42	4	Screw-HHF

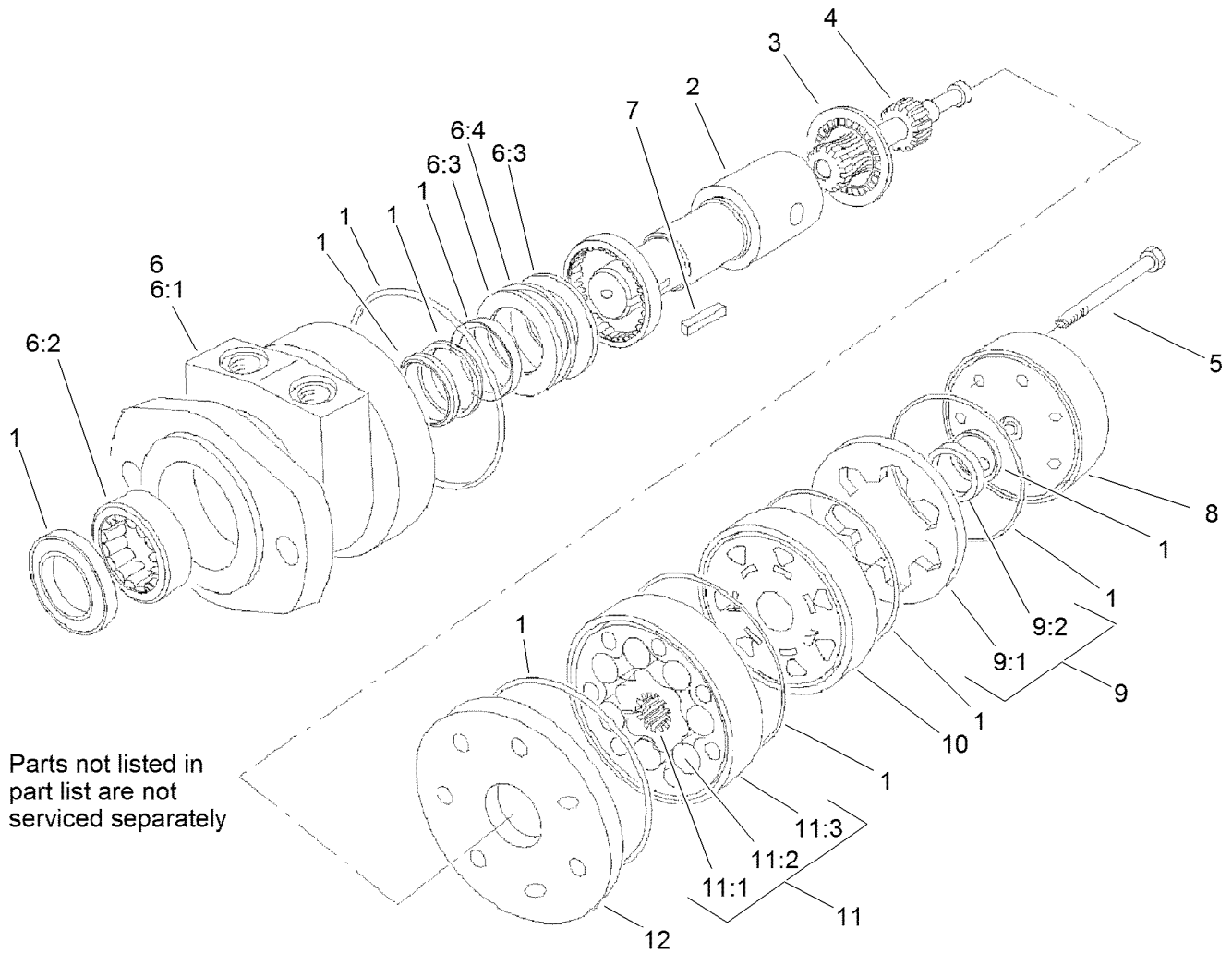


Hydraulic Hose and Motor Assembly

<i>Ref.</i>	<i>Part Number</i>	<i>Qty.</i>	<i>Description</i>
1	105-4573	1	Motor-Hydraulic
4	114-7885	2	Hose ASM
4:4	237-80	2	O-Ring ■■
6	104-6134	1	Coupler-Face, Flush
7	100-4701	1	Nipple-Connect, Pressure
7:1	100-6120	1	Seal Kit ●

● Not illustrated

■ Not serviced separately



Hydraulic Motor Assembly No. 105-4573

Ref.	Part Number	Qty.	Description	Ref.	Part Number	Qty.	Description
1	94-8178	1	Seal Kit	8	76-0940	1	End Cover ASM
2	95-6137	1	Coupling Shaft	9	95-6138	1	Commutator ASM
3	76-0850	1	Bearing-Thrust	9:1		1	Ring-Commutator ●
4	76-0930	1	Link-Drive	9:2		1	Commutator ●
5	76-1030	7	Screw-HH	10	92-9755	1	Manifold
6	95-6136	1	Housing ASM	11	76-0950	1	Rotor Set
6:1		1	Housing ●	11:1		1	Rotor ●
6:2		1	Bearing ●	11:2		7	Vane ●
6:3		2	Washer-Thrust ●	11:3		1	Stator ●
6:4		1	Bearing-Thrust ●	12	106-1978	1	*obs* Plate-Wear
7	11-5790	1	Key-Square				

● Not serviced separately

Notes:

Notes:

Notes:



Count on it.