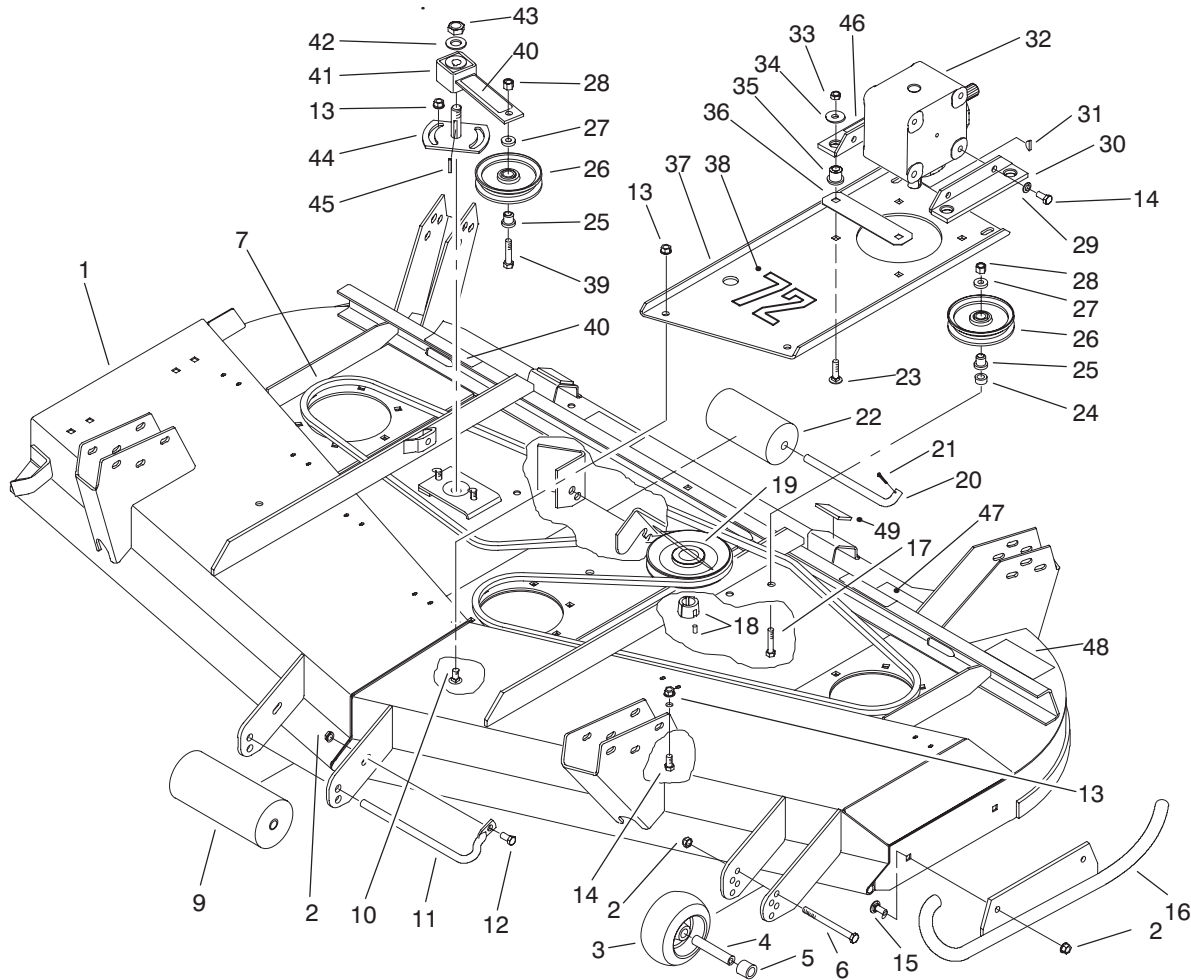




MODEL NO. 30553-20000001 & UP  
 MODEL NO. 30553TE-20000001 & UP

**PARTS  
 CATALOG**

**72" SIDE DISCHARGE CUTTING UNIT  
 For Groundsmaster® 200 Series**

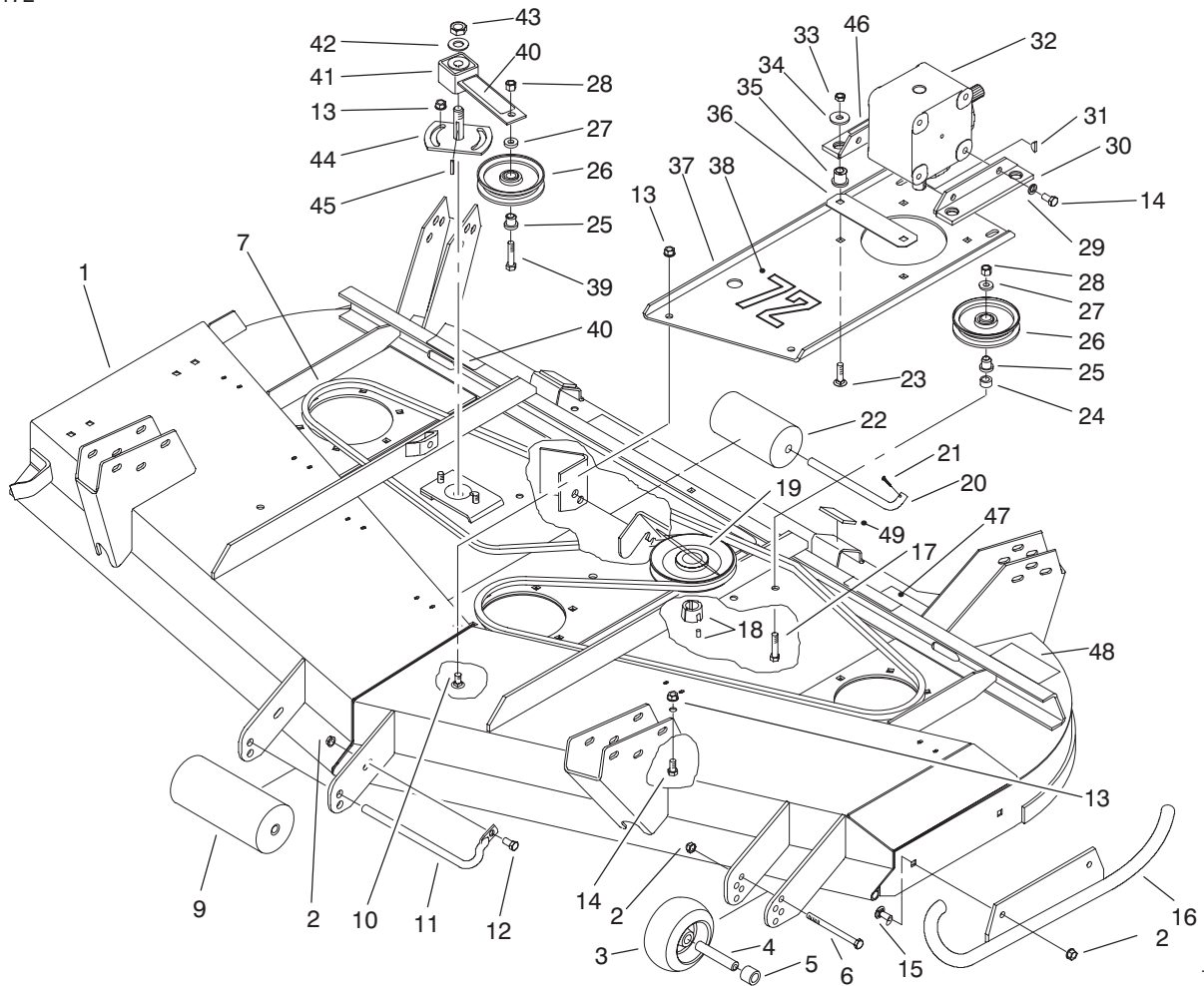


T-2939-2

**DECK ASSEMBLY**

Ref. No.	Part No.	Description	No. Used
1	99-1278	Asm-Deck (Incl. Ref. #40, 47, 48 & on page 4, #4, 12, 17 & 18)	1
1	99-8406	Asm-Deck (Europe) (Incl. Ref. #40, 47, 48 & on page 4, #4, 12, 17 & 18)	1
2	32128-19	Nut-HFH	4
3	68-2730	Wheel-Gage	1
4	98-7912	Spanner	1
5	98-7913	Spacer	1
6	323-23	Screw-HH	1
7	57-0240	V-Belt	1
9	68-6710	Roller-Deck	1
10	3231-27	Bolt-CARR	4
11	68-6840	Shaft-Roller	1
12	3234-11	Screw-HHF	1
13	3290-357	Nut-HHF	8

Ref. No.	Part No.	Description	No. Used
14	323-4	Screw-HH	6
15	3231-22	Bolt-CARR	2
16	98-7923	Skid	1
17	3211-9	Screw-HH	1
18	27-6140	Bushing-Taperlock	1
19	63-9900	Pulley-Gearbox	1
20	40-0340	Shaft-Roller, Rear	2
21	3272-11	Pin-Cotter	3
22	36-1740	Roller-Deck	2
23	3231-26	Bolt-CARR	4
24	44-6390	Spacer	1
25	65-5950	Bushing-Pulley	2
26	65-5940	Pulley-Idler	2
27	7-0081	Washer-Special	2
28	3296-5	Nut-Lock	2
29	3253-21	Washer-Lock	4
30	68-8560	Bracket-Gear Box	2

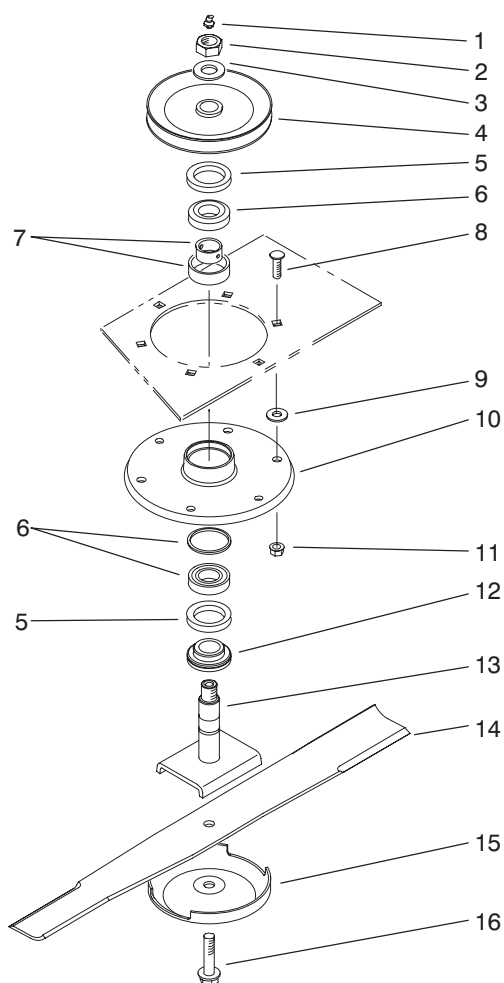


T-2939-2

## DECK ASSEMBLY (Continued)

Ref. No.	Part No.	Description	No. Used	Ref. No.	Part No.	Description	No. Used
31	3257-5	Key-Woodruff	1	42	3256-27	Washer-Flat	1
32	68-6810	Gear Box	1	43	3296-33	Nut-Lock	1
33	32153-2	Nut-Lock	4	44	44-6300	Plate-Idler	1
34	63-8410	Washer-Flat	4	45	5-1077	Key-Square	1
35	63-9750	Mount-Rubber	4	46	70-2560	Decal-Lube	1
36	68-9890	Cover-Gear Box, Front	1	46	93-6697	Decal-Lube (Europe)	1
37	68-8530	Base-Gear Box	1	47	68-8340	Decal-Torque	1
38	57-0280	Decal-72"	1	47	93-7818	Decal-Torque (Europe)	1
39	3211-8	Screw-HH	1	48	92-8778	Decal-Warning	1
40	100-6578	Decal-Danger	3	48	99-8401	Decal-Warning (Europe)	1
41	100-6178	Asm-Socket, Idler (Incl. Ref. #40)	1	49	74-0340	Cushion-Rubber	2

\*Not Illustrated

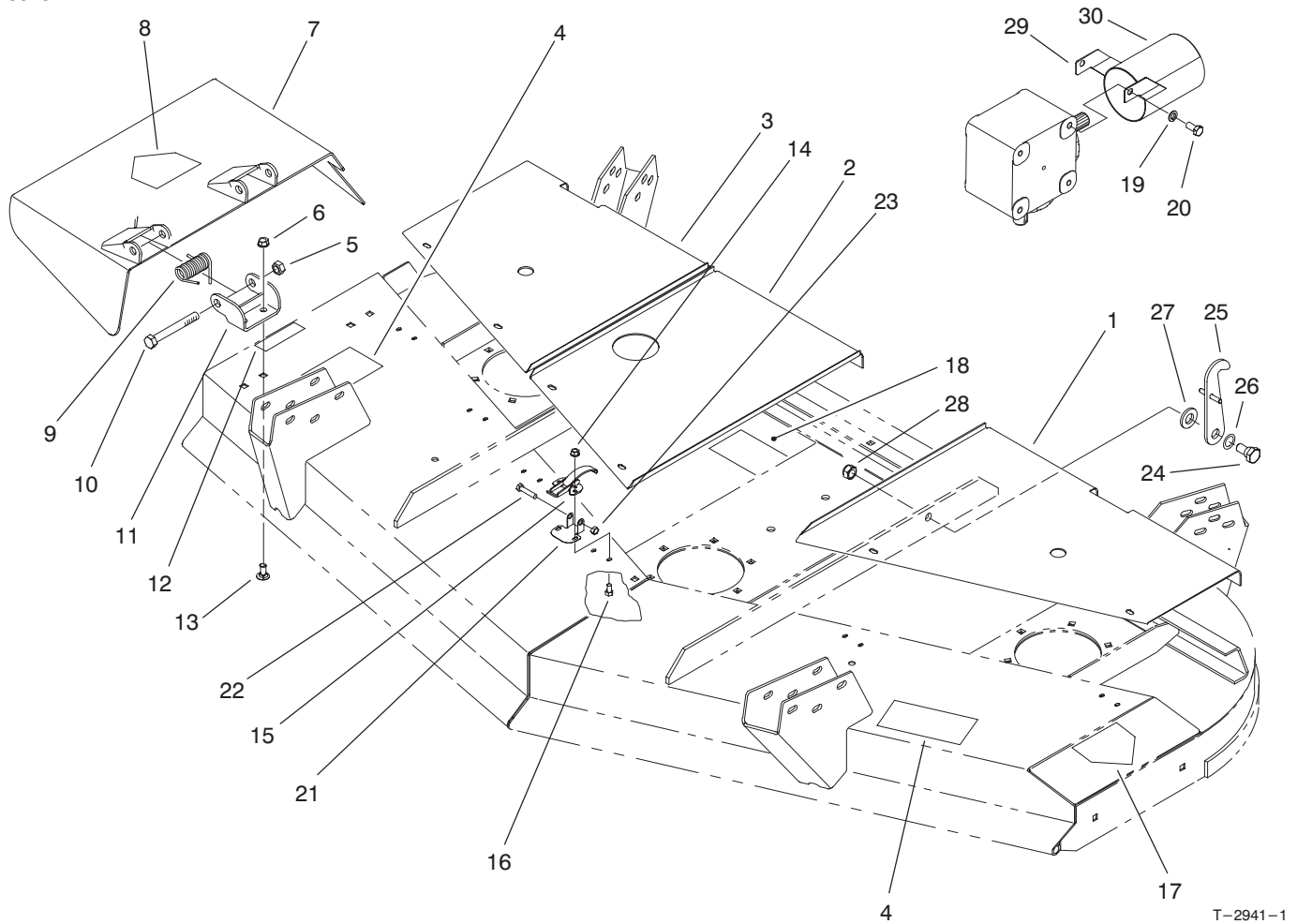


T-2940-2

## SPINDLE ASSEMBLY

Ref. No.	Part No.	Description	No. Used	Ref. No.	Part No.	Description	No. Used
1	302-2	Fitting-Grease	3	11	32128-21	Nut-Lock HFH	18
2	32146-20	Nut-Lock	3	12	27-0950	Spacer-Bearing, Spindle	3
3	7-4150	Washer	3	13	27-0920	Shaft-Spindle	3
4	57-0560	Asm-Pulley & Hub	3	14	94-1861	Blade	3
5	253-139	Seal-Oil	6	15	72-9361	Cup-Anti Scalp	3
6	27-0960	Asm-Bearing	3	16	92-5816	Screw-Blade	3
7	27-5970	Spacer-Matched Set	3	*	95-3080	Spindle Kit Assembly (Incl. Ref. # 8, 9, 11, 15, 16)	1
8	3231-22	Bolt-CARR	18	*	57-0260-03	Spindle Assembly (Incl. Ref. #1-5, 10, 12-13)	1
9	3256-24	Washer-Flat	AR				
10	61-4160	Spindle	3				

\*Not Illustrated

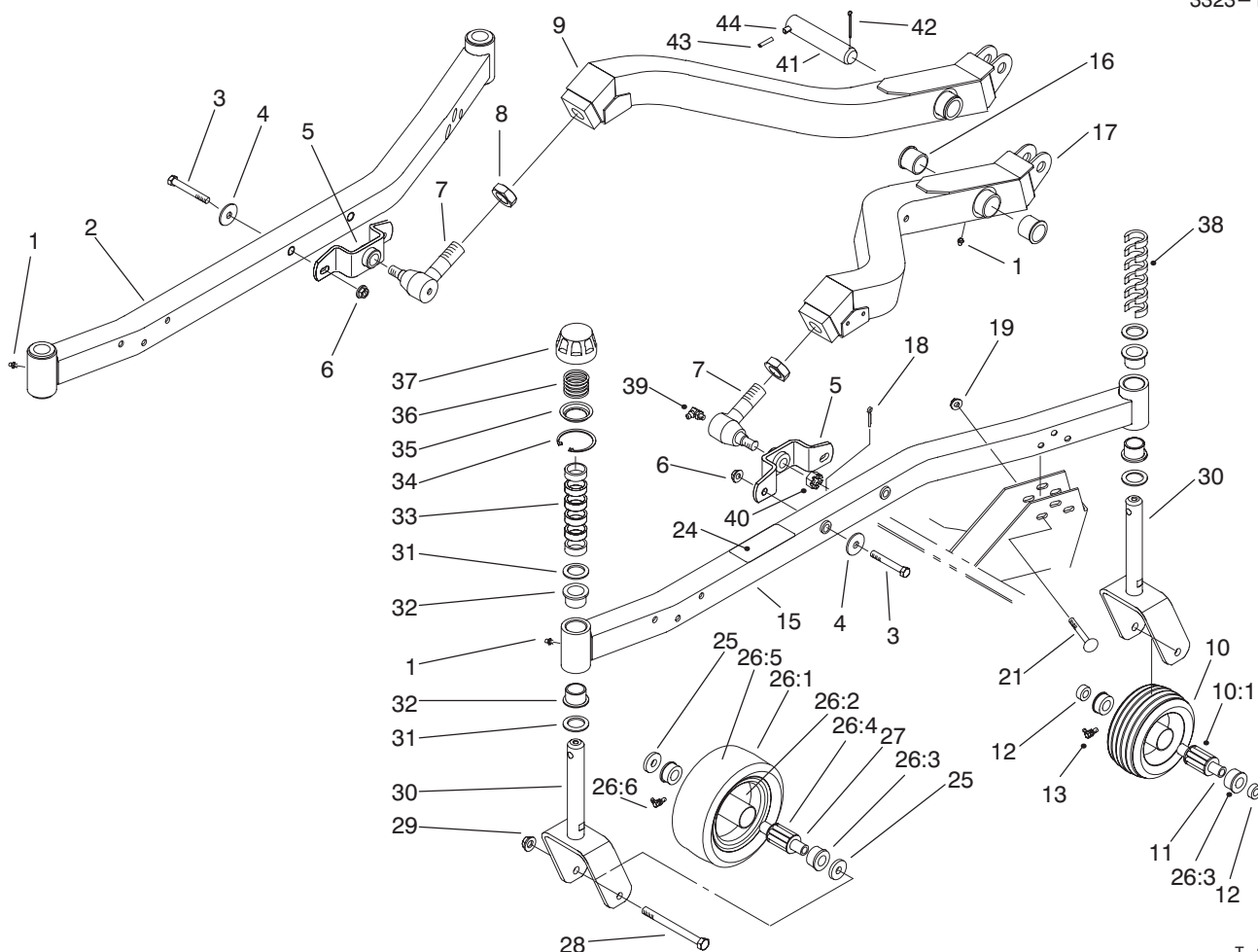


T-2941-1

## COVERS & DEFLECTOR ASSEMBLY

Ref. No.	Part No.	Description	No. Used
1	98-7930	Cover-Belt LH	1
2	57-0210	Cover-Center	1
3	98-7928	Cover-Belt RH	1
4	66-1340	Decal-Danger	2
4	93-7824	Decal-Danger (Europe)	2
5	32153-5	Nut-Lock	2
6	3290-357	Nut-HFH	4
7	100-6181	Asm-Deflector (Incl. Ref. #8)	1
8	100-6582	Decal-Danger	1
9	51-1550	Spring	2
10	325-17	Screw-HH	2
11	51-1530	Bracket-Hinge	2
12	66-6380	Decal-Danger	1
12	93-7828	Decal-Danger (Europe)	1
13	3231-27	Bolt-CARR	4
14	32128-17	Nut-HFH	12

Ref. No.	Part No.	Description	No. Used
15	249-21	Latch-Draw	6
16	3290-321	Screw-Hex Slotted Hd.	12
17	43-8480	Decal-Danger	1
17	93-7815	Decal-Danger (Europe)	1
18	99-5172	Decal-Belt Routing	1
19	3253-21	Washer-Lock	2
20	323-2	Screw-HH	2
21	93-7043	Retainer	3
22	321-8	Screw-HH	3
23	3296-56	Nut-Lock	3
24	62-6080	Bolt-Shoulder	2
25	99-5188	Asm-Retainer, Deck	2
26	3290-317	Washer-Wave	2
27	3256-27	Washer-Flat	2
28	3296-28	Nut-Lock	2
29	99-8408	PTO Guard	1
30	93-7283	Decal-Danger	1



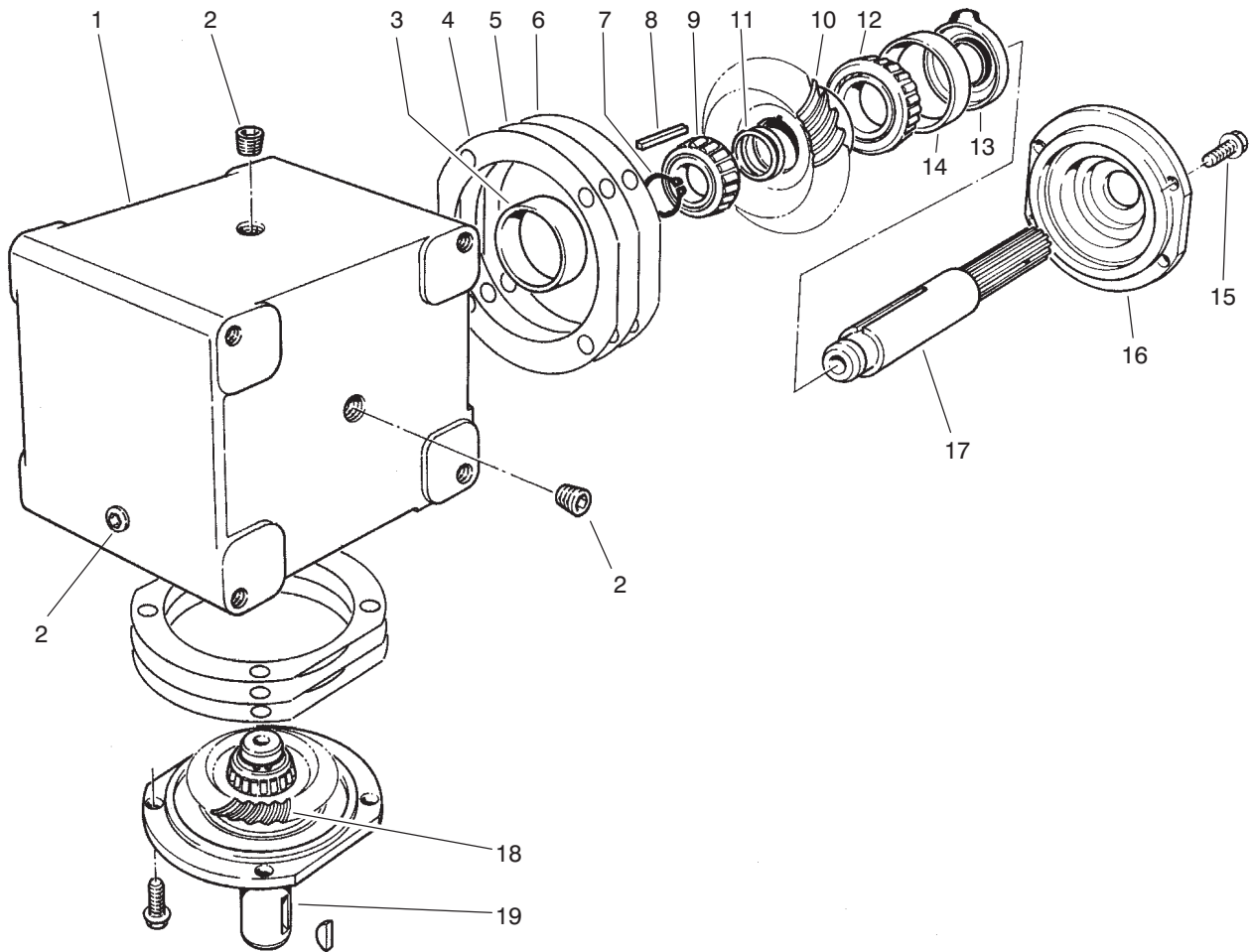
T-2942-1

## CARRIER FRAME ASSEMBLY

Ref. No.	Part No.	Description	No. Used
1	302-5	Fitting-Grease	6
2	98-7934	Arm-Castor RH (Incl. Ref. #1 & 32)	1
3	324-12	Screw-HH	4
4	66-6480	Washer	4
5	98-7944	Mount-Ball Joint	2
6	32128-42	Nut-HFH	4
7	86-8100	Ball Joint (Incl. Ref. #39 & 40)	2
8	21-3000	Nut-Jam	2
9	98-7900	Arm-Lift, RH (Incl. Ref. #1 & 16)	1
10	63-8400	Wheel-Castor (Incl. Ref. #10:1, 13 & 26:3)	2
10:1	63-8580	Bearing-Roller	2
11	63-1770	Bushing-Spanner	2
12	99-1291	Spacer	4
13		Fitting-Grease	2
15	98-7933	Arm-Castor LH (Incl. Ref. #1, 24 & 32)	1
16	256-268	Bushing-Flange	4
17	98-7903	Arm-Lift LH (Incl. Ref.#1&16)	1
18	3272-12	Pin-Cotter	2
19	32128-19	Nut-HFH	12
21	3231-10	Bolt-CARR	12
24	92-3035	Decal-Low Height-Of-Cut	1
25	70-8040	Washer-Flat	4

Ref. No.	Part No.	Description	No. Used
26	99-1268	Asm-Wheel & Tire	2
26:1	93-9939	Tire 8"	1
26:2		Asm-Rim	1
26:3	62-5580	Bearing-Outside	2
26:4	62-5570	Bearing-Roller	1
26:5	68-8950	Tube-W/Valve	1
26:6	302-11	Fitting-Grease	1
27	68-8980	Bushing-Spanner	2
28	325-19	Screw-HH	4
29	32128-23	Nut-HFH	4
30	98-7921	Asm-Fork, Castor	4
31	3-6781	Washer-Thrust	8
32	94-1291	Bushing-Special	8
33	63-0070	Spacer	12
34	92-5581	Ring-Retaining, Internal	4
35	92-5583	Washer-Cap	4
36	92-5584	Spring-Compression	4
37	92-8861	Cap-Height-Of-Cut	4
38	99-1283	Spacer	12
39	302-5	Fitting-Grease 90°	2
40	32136-2	Nut-Hex. Slotted	2
41	98-2330	Asm-Pivot Pin (Incl. Ref. #43 & 44)	2
42	3272-19	Pin-Cotter	2
43	32121-61	Pin-Roll	1
44	32121-67	Pin-Roll	1
*	92-8862	HOC Cap ASM (Incl. 34-37)	4

\*Not Illustrated

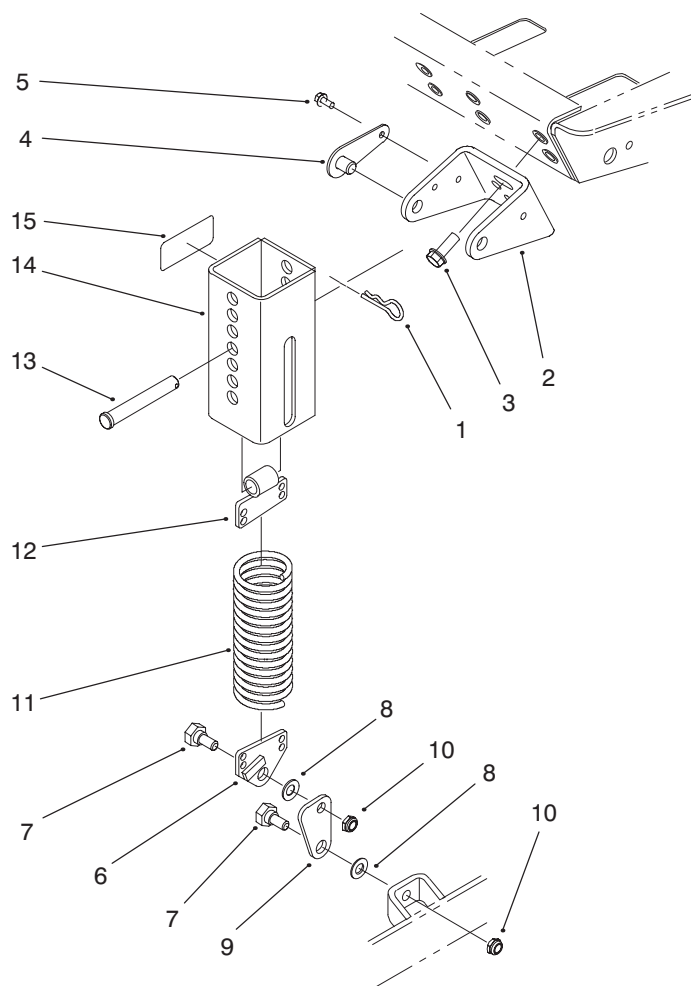


T-0977-2

## GEAR BOX ASSEMBLY NO. 68-6810

Ref. No.	Part No.	Description	No. Used
1	68-7030	Housing	1
2	62-3490	Plug-Pipe (Solid)	4
3	62-3360	Cup-Bearing	2
4	62-3420	Gasket (.015 in.)	A/R
5	62-3430	Gasket (.005 in.)	A/R
6	62-3440	Gasket (.003 in.)	A/R
7	68-7070	Ring-Retaining	2
8	62-3380	Key	2
9	62-3370	Cone-Bearing	2
10	68-7080	Gear	1

Ref. No.	Part No.	Description	No. Used
11	72-9370	Shim (.020 in.)	4
12	62-3330	Cone-Gear	1
13	62-3400	Seal	2
14	62-3340	Cup-Bearing	2
15	62-3310	Screw-Cap	8
16	62-3410	Cap	2
17	68-7040	Shaft	1
18	68-7060	Gear	1
19	68-7050	Shaft	1



T-2486-4

## COUNTERBALANCE ASSEMBLY

Ref. No.	Part No.	Description	No. Used	Ref. No.	Part No.	Description	No. Used
1	3290-355	Pin-Hair, Cotter	2	9	66-8440	Link-Knee	2
2	66-8230	Bracket-Support	2	10	3296-44	Nut-Lock	4
3	3234-11	Screw-HFH	4	11	66-8390	Spring-Extension	2
4	70-7920	Asm-Pin, Lock	4	12	70-7940	End-Spring	2
5	12-3270	Screw-Self Tapping	4	13	283-69	Pin-Clevis	2
6	66-8420	End-Spring	2	14	99-1298	Asm-Spring Cover (Incl. Ref. #15)	2
7	46-3380	Bolt-Shoulder	4	15	100-6179	Decal-Warning	1
8	3256-24	Washer-Flat	4				

