



GreensPro™ 1260 Greens Roller

Model No. 44913—Serial No. 403414296 and Up

Form No. 3431-296 Rev A

Addendum

Loose Parts

Use the chart below to verify that all parts have been shipped.

| Description | Qty. | Use |
|--------------------|------|------------------------------------|
| Lock bracket | 1 | Install the lock bracket and shim. |
| Shim | 1 | |
| Bolt (M10 x 30 mm) | 4 | |
| Lock washer (M10) | 4 | |
| Washer (M10) | 4 | |
| Nut (M10) | 4 | |

Installing the Lock Bracket and Shim

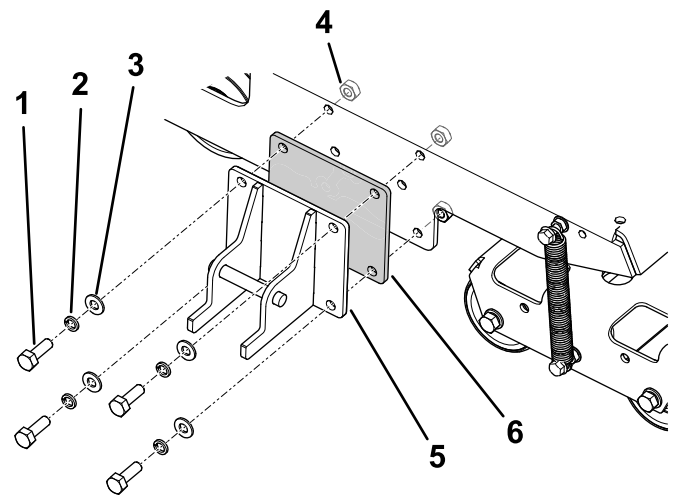
1. Locate the shim under the hitch assembly on the shipping crate.
2. Align the shim as shown in [Figure 1](#).

Note: The holes on 1 end of the shim are closer to the edge than the holes on the other end. Rotate the shim so that the top is flush with the machine frame.

3. Secure the lock bracket and shim to the frame of the machine with the bolts, lock washers, washers, and nuts.

Note: Torque the nuts to 52 N·m (38 ft-lb).

4. Install the hitch assembly to the hitch pivot bracket as instructed in the *Operator's Manual*.



g284511

Figure 1

- | | |
|-------------------------|-----------------|
| 1. Bolt—M10 x 30 mm (4) | 4. Nut—M10 (4) |
| 2. Lock washer—M10 (4) | 5. Lock bracket |
| 3. Washer—M10 (4) | 6. Shim |

