



Light Kit
TXL 2000 Tool Carrier
 Model No. 136-4890

Installation Instructions

Installation

1

Preparing the Machine

No Parts Required

Procedure

1. Park the machine on a level surface.
2. Lower the loader arms.
3. Shut off the engine and remove the key.
4. Open the rear-access cover.
5. Turn the battery-disconnect switch to the OFF position (Figure 1).

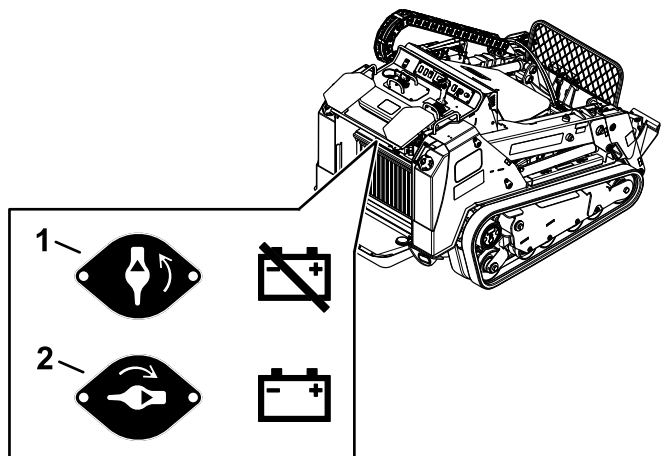


Figure 1

1. Battery-disconnect switch—OFF position
2. Battery-disconnect switch—ON position

g261512

2

Installing the Lights

Parts needed for this procedure:

2	Light
1	Left light bracket
1	Right light bracket
1	Switch
2	Thread-cutting screw
2	Bolt (5/16 x 1 inch)
2	Nut (5/16 inch)

Procedure

1. Remove the 2 thread-cutting screws and plate from the control panel (Figure 2). Discard the plate.

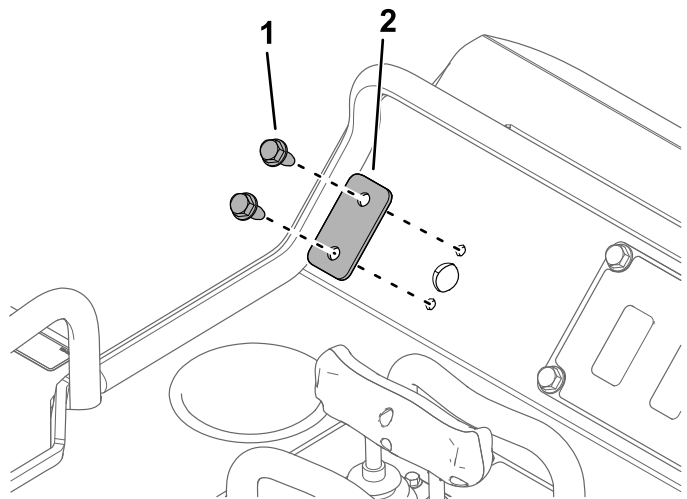


Figure 2

1. Thread-cutting screw (2)
2. Plate

g283294



2. Install the left light bracket using 2 thread-cutting screws (Figure 3).

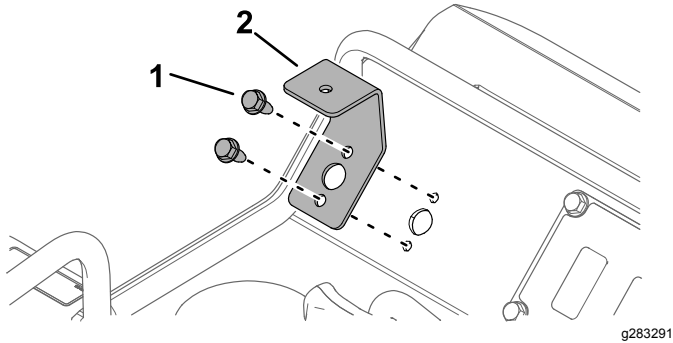


Figure 3

1. Thread-cutting screw (2)
2. Left light bracket

3. Remove the bolt, washer, and nut from a light and use them to secure the light to the bracket (Figure 4).

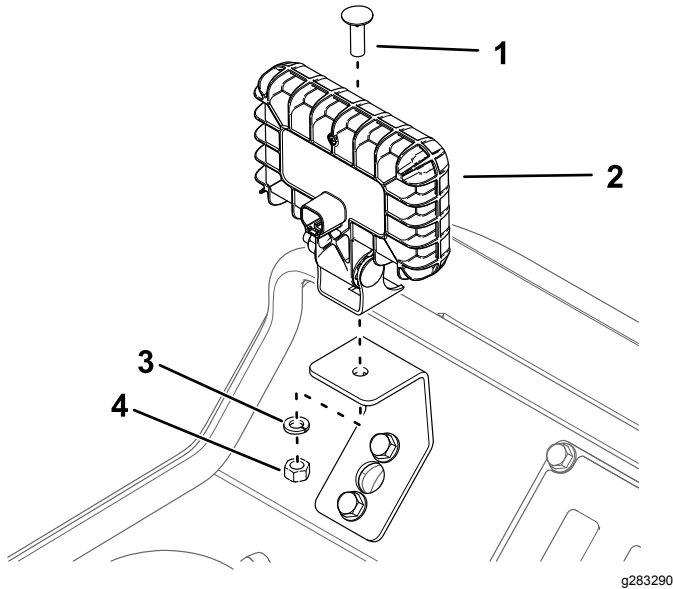


Figure 4

1. Bolt
2. Light
3. Washer
4. Nut

4. Install the right light bracket to the tower plate using 2 bolts (5/16 x 1 inch) and 2 nuts (5/16 inch) as shown in Figure 5.

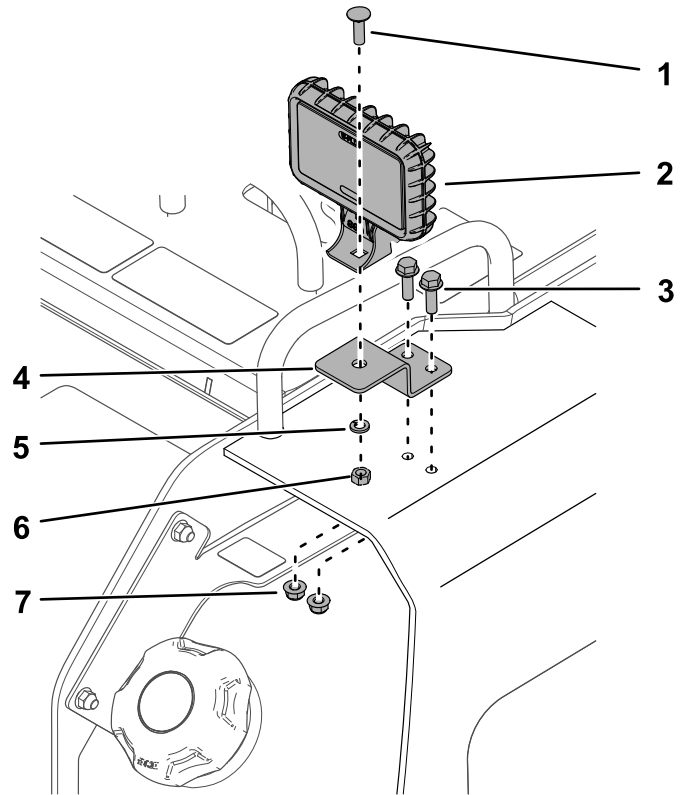


Figure 5

1. Light bolt
2. Light
3. Bolt—5/16 x 1 inch (2)
4. Right light bracket
5. Washer
6. Light nut
7. Nut—5/16 inch (2)

5. Remove the bolt and nut from the other light and use them to secure the light to the bracket (Figure 5).

3

Routing the Wire Harness

Parts needed for this procedure:

1	Wire harness
2	Cable tie

Procedure

Refer to [Figure 6](#) to identify the wire harness connectors.

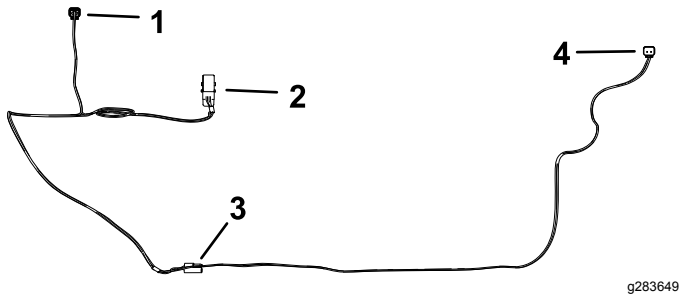


Figure 6

g283649

- | | |
|-------------------------|-----------------------------------|
| 1. Left light connector | 3. Machine wire harness connector |
| 2. Switch connector | 4. Right light connector |

1. Remove the 4 thread-cutting bolts (5/16 x 3/4 inch) securing the console plate to the machine ([Figure 7](#)).

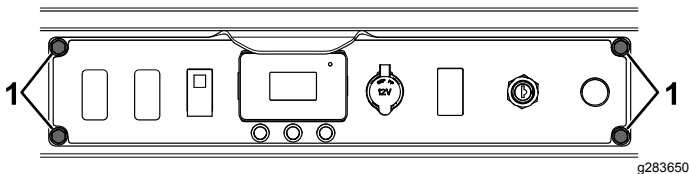


Figure 7

g283650

1. Thread-cutting bolt (5/16 x 3/4 inch)

2. Pull out the plate so that you can access inside the machine.
3. Open the rear-access cover.

4. Remove the plug from an accessory connector on the machine wire harness (P50, P75, or P76) and plug the kit wire harness to it ([Figure 8](#)).

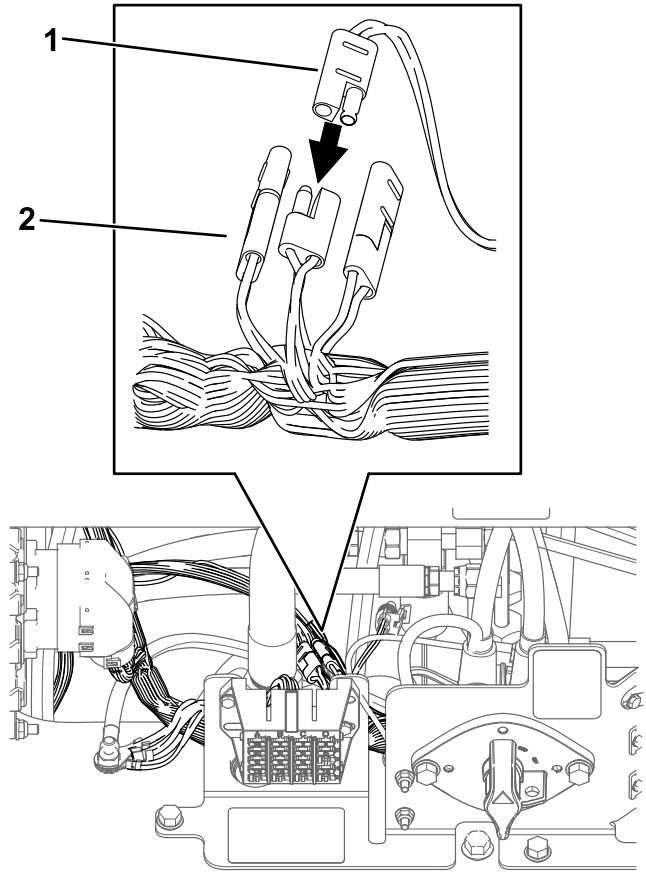


Figure 8

g282599

- | | |
|---------------------|--|
| 1. Kit wire harness | 2. Accessory connector from machine wire harness |
|---------------------|--|

5. Secure the wire harness to the machine wire harness using a cable tie near the connectors.
6. Route the right light connector out the right side of the machine, up to the light ([Figure 9](#)). Plug the connector to the light.

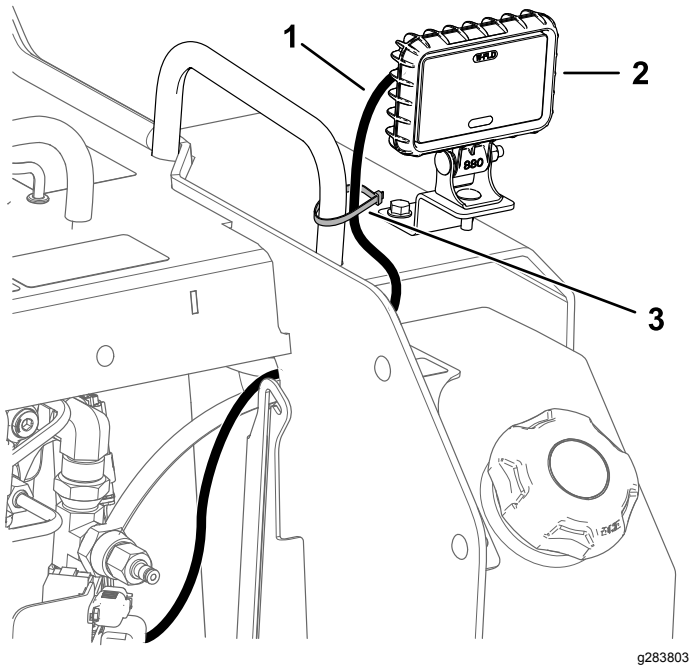


Figure 9

g283803

- 1. Wire harness
- 2. Right light
- 3. Cable tie

- 7. Secure the wire harness to the grab bar using a cable tie (Figure 9).
- 8. Route the left light and switch connectors through the hole on the left side of the machine (Figure 10).

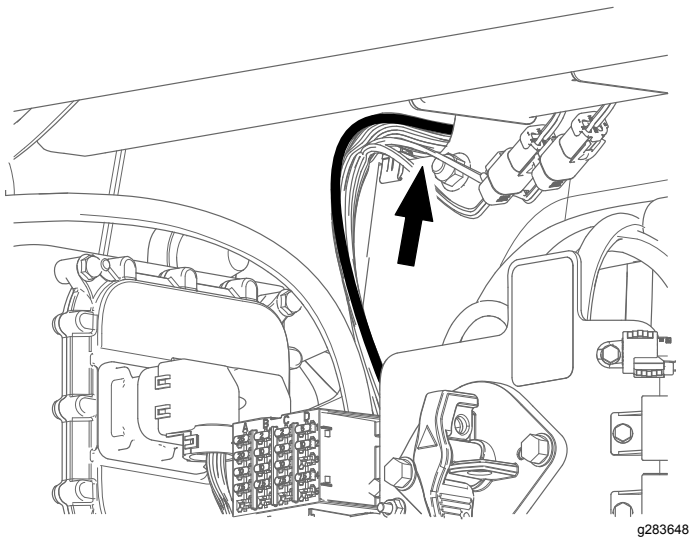


Figure 10

g283648

- 9. Using the console plate opening to access the wire harness, route the left light connector through the hole in the left light bracket and connect it to the left light (Figure 11).

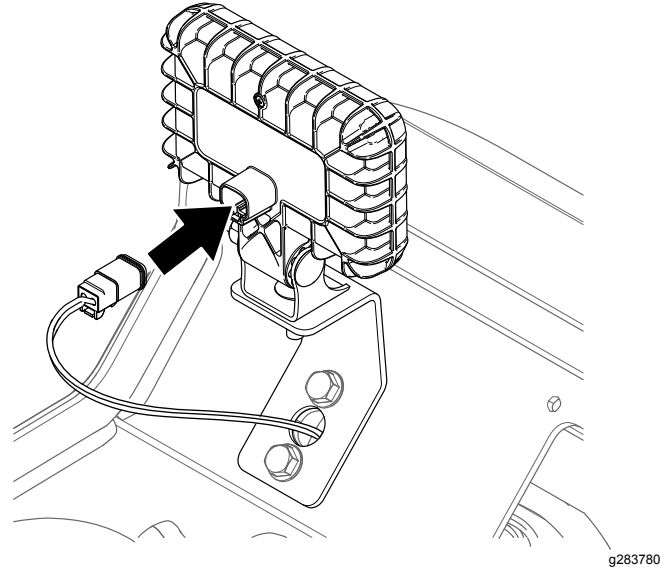


Figure 11

g283780

- 10. Remove the second plug on the console plate and install the switch (Figure 12). Connect the wire harness to the switch.

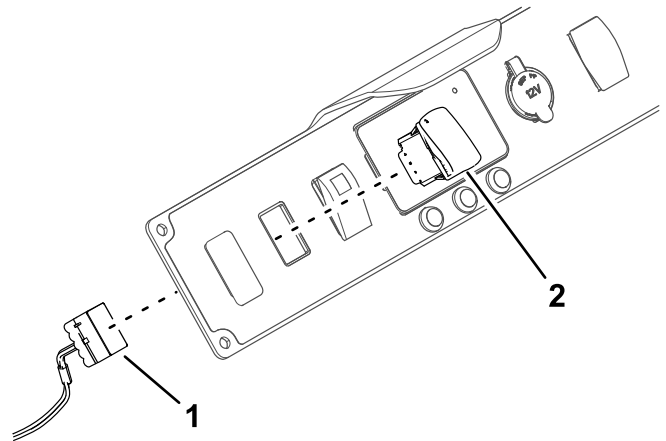


Figure 12

g283801

- 1. Switch connector
- 2. Switch

- 11. Secure the console plate to the machine using the 4 thread-cutting bolts removed previously (Figure 7).

4

Installing the Reflectors

Parts needed for this procedure:

2	Reflector (2 x 3 inches)
2	Reflector (1-1/2 x 6 inches)

Procedure

1. Thoroughly clean the surfaces on the back of the machine and the front of the loader arms in the locations shown in [Figure 13](#) and [Figure 14](#).
2. Adhere the reflectors to the machine.

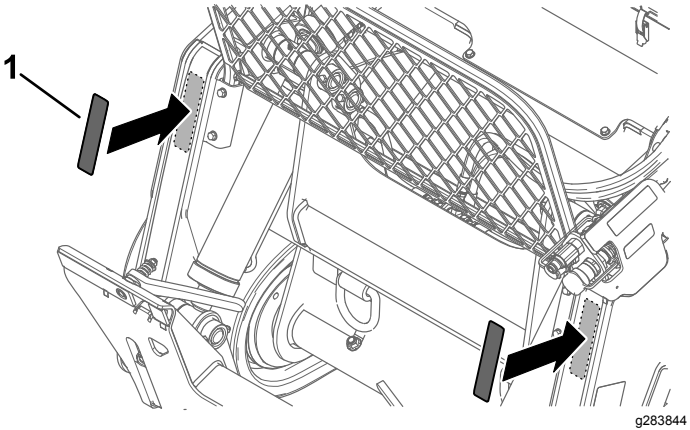


Figure 13

1. Reflector (1-1/2 x 6 inches)

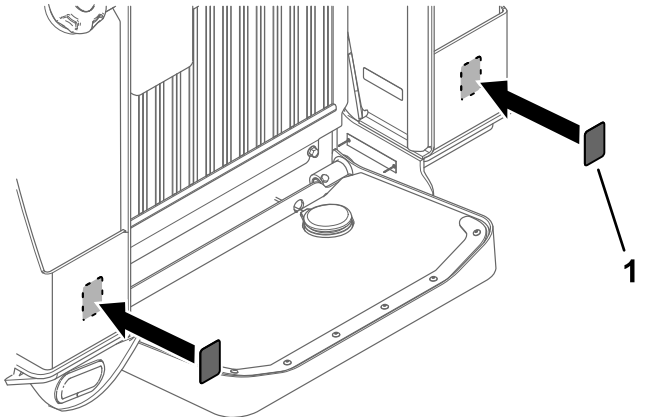


Figure 14

1. Reflector (2 x 3 inches)

5

Completing the Installation

No Parts Required

Procedure

1. Turn the battery-disconnect switch to the ON position and close the rear cover.
2. Start the machine.
3. Use the switch to verify that the lights turn on and off.

Notes:

Notes:



Count on it.