



**Count on it.**

**Parts Catalog**

**Vibratory Plow  
Compact Tool Carrier**

Model No. 22911—Serial No. 404320000 and Up



# Ordering Replacement Parts

To order replacement parts, please supply the part number, the quantity, and the description of each part desired.

## Understanding Reference Numbers

Each identified part in an illustration has a reference number. The reference number for a part also appears in the parts list, along with other information about the part.

This catalog uses two special reference number formats, one to indicate parts in a service assembly and another to indicate the quantity of a given part in an illustration.

## Service Assembly Reference Numbers

Parts in service assemblies have reference numbers in the form a:b. The a represents the reference number of the entire service assembly and the b represents a sequential number unique to each part within the service assembly.

For example, a wheel assembly might be identified by reference number 6, the tire by 6:1, the valve by 6:2, and the wheel by 6:3. When you order the assembly identified by reference number 6, you receive all parts identified by reference numbers 6:1, 6:2, and 6:3. However, you may also order any part individually. Reference numbers of this type appear in illustration and in parts lists.

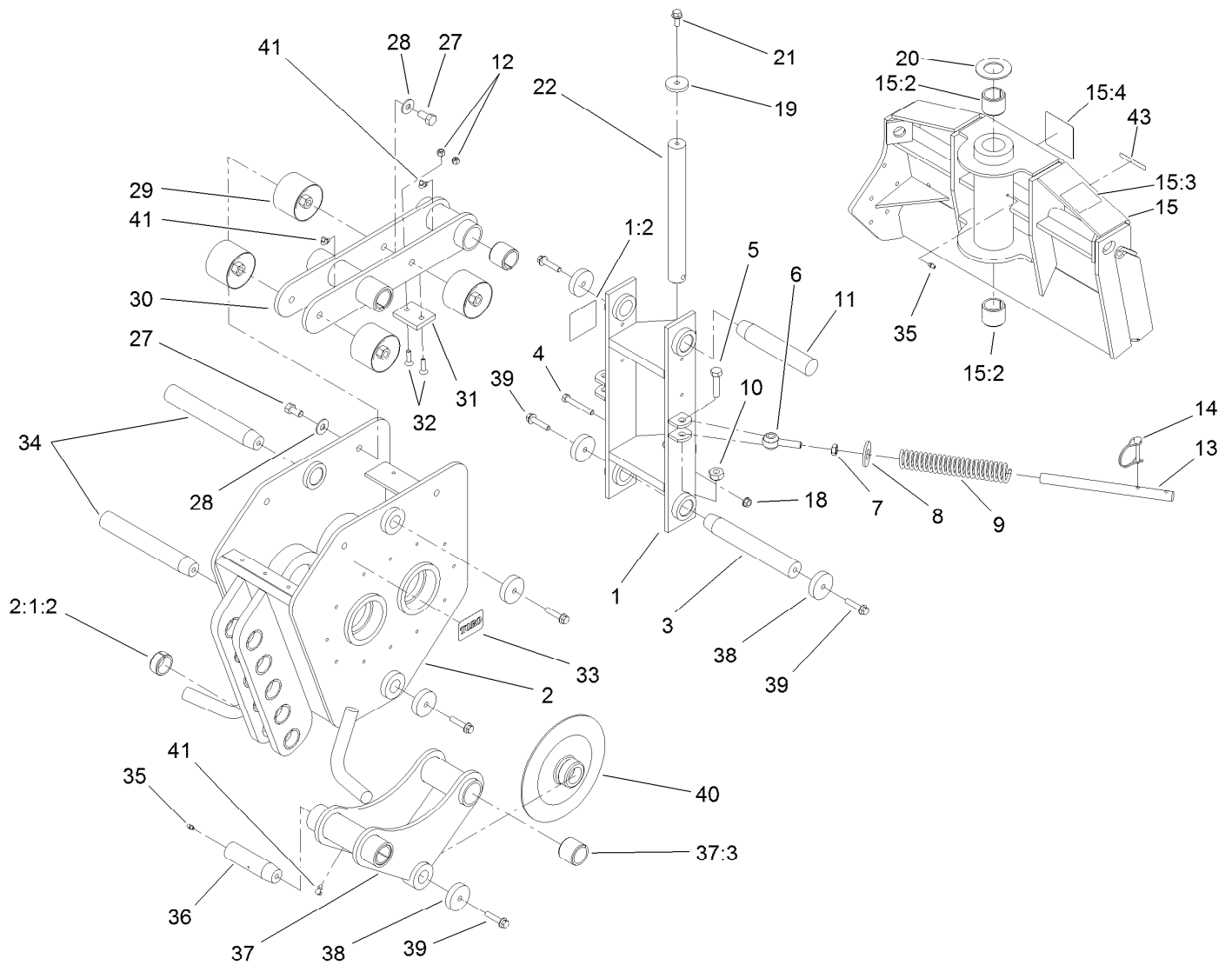
## Reference Numbers Indicating Quantity

In an illustration, if a reference number indicates more than one part, the reference number has the form nX y. The n represents the quantity of the part, the X is the multiplication symbol, and the y represents the reference number.

For example, in an illustration, the reference number 2X 37 means that two of the parts identified by reference number 37 are indicated.

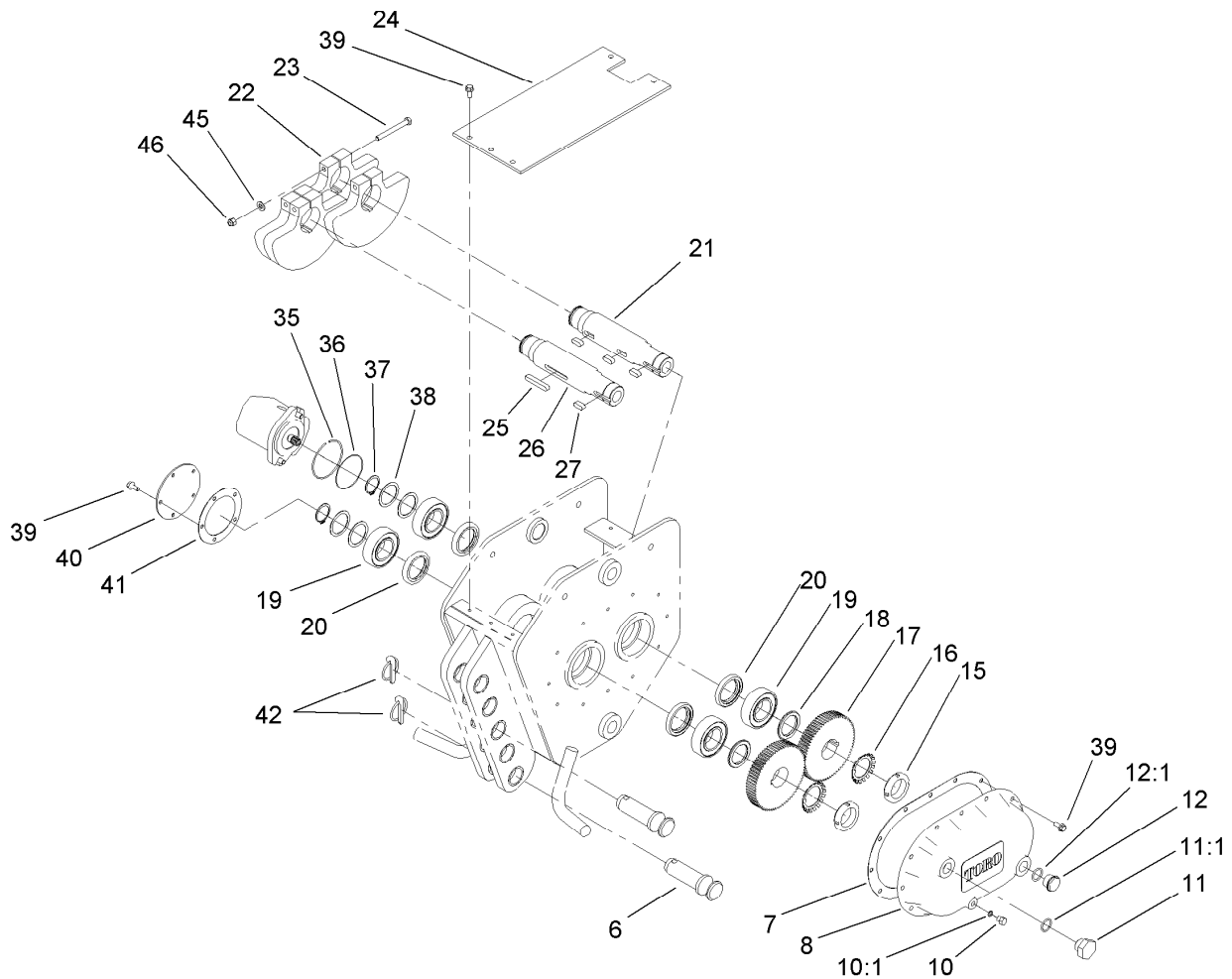
# Contents

Quick Attach and Frame Assembly .....	4
Plow Head Assembly .....	5
Indicating Lever Assembly .....	6
Hydraulic Assembly .....	7
Optional Blade and Puller Assembly .....	8
1 Inch Puller Assembly No. 100-6285.....	9
1.5 Inch Puller Assembly No. 100-6290 .....	10
2 Inch Puller Assembly No. 100-6294.....	11
Chuted Blade Assembly No. 104-0640.....	12



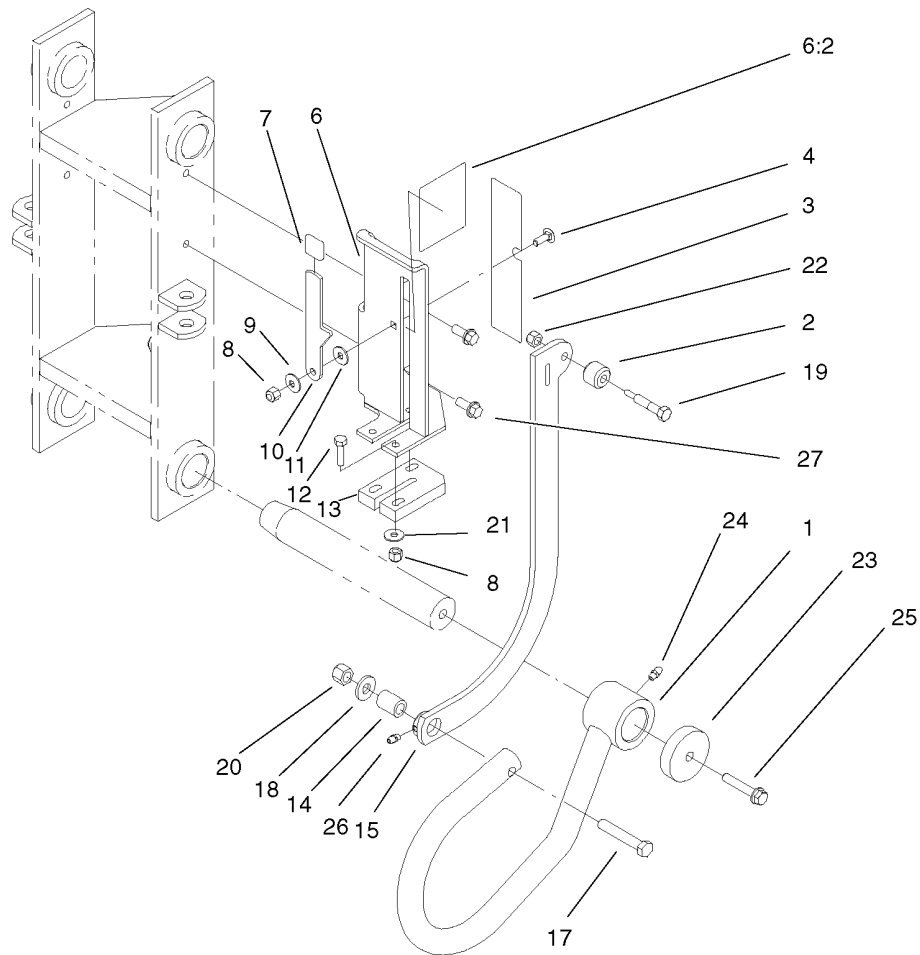
## Quick Attach and Frame Assembly

Ref.	Part Number	Qty.	Description	Ref.	Part Number	Qty.	Description
1	112-2796	1	Clevis ASM	19	110-9981	1	Washer-Plain
1:2	100-4650	1	Decal-Warning	20	99-2707	1	Washer
2	104-8429-03	1	Frame ASM	21	3234-25	1	Screw-HHF
2:1:2	99-2740	10	Bushing-Tension	22	112-2795	1	Pin
3	99-8646	1	Pin-Tapered	27	3213-1	8	Screw-HH
4	104-6564	1	Screw-HH	28	3256-40	8	Washer-Flat
5	325-8	2	Screw-HH	29	99-2693	4	Mount-Sandwich
6	99-2695	2	Rod End	30	99-2715-03	1	Link ASM
7	3220-5	2	Nut-Jam	31	99-2653	1	Pad-Stop
8	99-2659	2	Washer	32	32108-103	2	Screw-FH
9	99-2686-03	2	Spring	33	98-3206	2	Decal
10	32146-13	2	Nut-Hex	34	99-2719	2	Pin-Tapered
11	99-2720	1	Pin-Tapered	35	302-5	1	Fitting-Grease
12	3296-29	2	Nut-Lock, NI	36	99-2722	1	Pin-Tapered
13	99-2725	2	Rod-Threaded	37	99-2735-03	1	Link ASM
14	100-1663	2	Pin-Hitch	37:3	99-2713	4	Bushing-Tension
15	112-2779	1	Qtach ASM	38	84-1580	5	Washer-Clutch
15:2	99-2713	2	Bushing-Tension	39	3234-19	5	Screw-HHF
15:3	100-4649	1	Decal-Danger	40	99-2726-03	1	Coulter
15:4	98-3269	1	Decal	41	302-40	5	Fitting-Grease, 90 DEG
18	3290-357	1	Nut-HHF, Whiz	43	133-8061	1	Decal-Warning



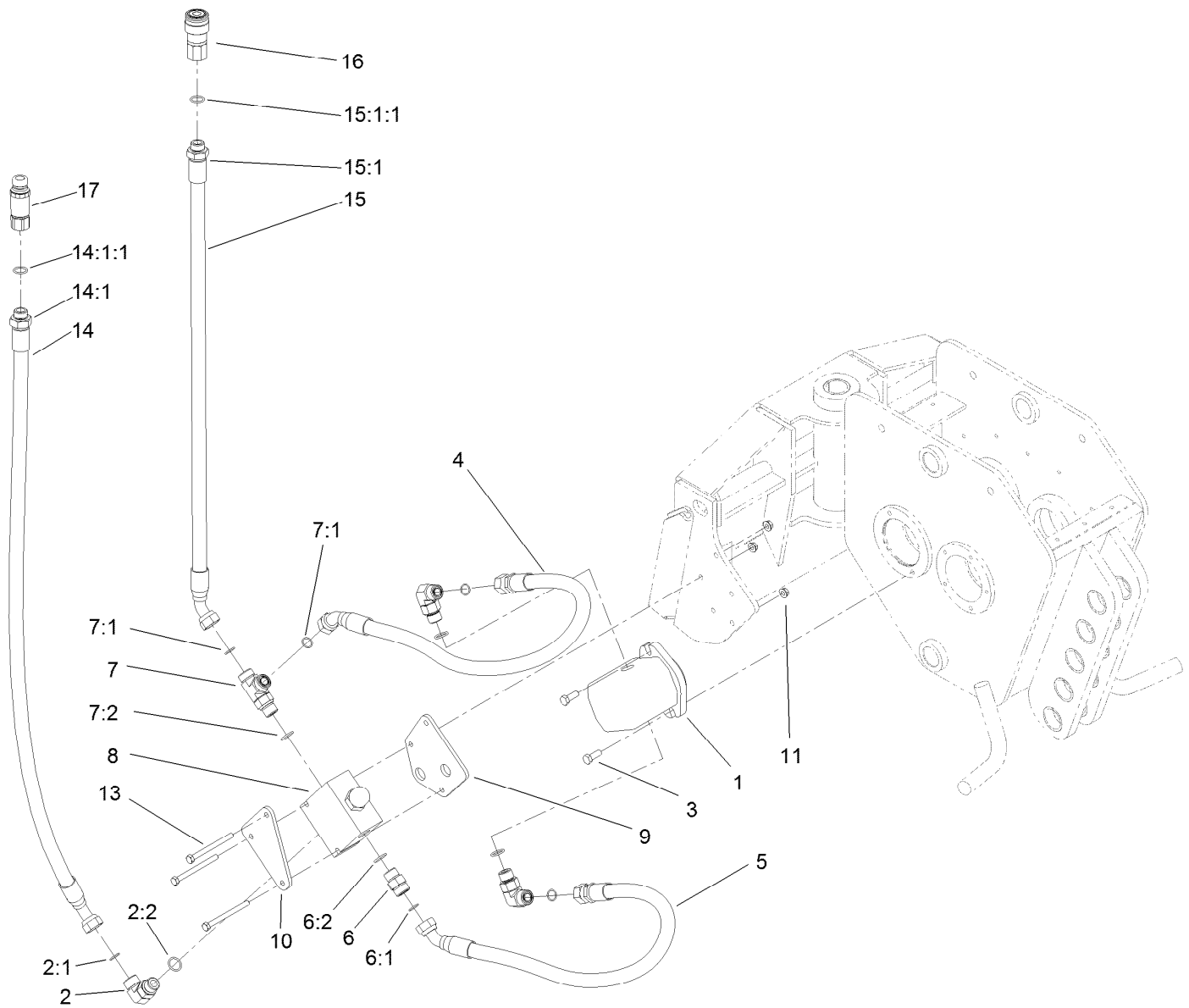
## Plow Head Assembly

<i>Ref.</i>	<i>Part Number</i>	<i>Qty.</i>	<i>Description</i>	<i>Ref.</i>	<i>Part Number</i>	<i>Qty.</i>	<i>Description</i>
6	104-5992	2	Pin-Blade	22	99-2673-03	4	Weight-Counter
7	99-2744	1	Gasket	23	323-15	4	Screw-HH
8	99-2723-03	1	Cover	24	99-2699-03	1	Plate-Top
10	353-512	1	Plug	25	99-2675	1	Key-Long
10:1	237-78	1	O-Ring	26	99-2671	1	Shaft
11	354-74	1	Plug-HH	27	99-2674	4	Key-Short
11:1	237-81	1	O-Ring	35	99-2746	1	Ring-Pilot
12	69-1170	1	Glass-Sight	36	237-167	1	O-Ring
12:1	237-81	1	O-Ring	37	32151-95	2	Ring-Retaining
15	99-2706	2	Nut	38	99-2654	4	Washer-Thrust
16	117-3404	2	Lockwasher, Bearing	39	100-1668	22	Screw-HHF
17	99-2676	2	Gear	40	99-2724-03	1	Plate-Cover
18	99-2677	2	Spacer	41	99-2745	1	Gasket
19	99-2670	4	Bearing-Roller, Spherical	42	283-71	2	Pin-Lynch
20	99-2714	4	Seal-Oil	45	3256-24	4	Washer-Flat
21	99-2672	1	Shaft-Splined	46	3296-39	4	Nut-Lock, NI



## Indicating Lever Assembly

<i>Ref.</i>	<i>Part Number</i>	<i>Qty.</i>	<i>Description</i>	<i>Ref.</i>	<i>Part Number</i>	<i>Qty.</i>	<i>Description</i>
1	99-8644-03	1	Rod ASM	14	100-1654	1	Spacer
2	100-1657	1	Nylon-Stop	15	100-1667-03	1	Indicator Bar ASM
3	99-8609	1	Decal-Indicator	17	323-47	1	Screw-HH
4	3229-28	1	Screw-CARR	18	3256-3	1	Washer-Flat
6	100-1665	1	Plate-Indicator	19	100-1656	1	Screw-Special
6:2	100-4650	1	Decal-Warning	20	3296-39	1	Nut-Lock, NI
7	100-1655	1	Grip-Handle	21	3256-2	3	Washer-Flat
8	3296-16	4	Nut-Lock, NI	22	3296-47	1	Nut-Lock, NI
9	3290-436	1	Washer-Belleville	23	84-1580	1	Washer-Clutch
10	100-1653-03	1	Lever-Indicator	24	302-40	1	Fitting-Grease, 90 DEG
11	3290-388	1	Washer	25	3234-19	1	Screw-HHF
12	321-8	3	Screw-HH	26	302-5	1	Fitting-Grease
13	100-1652	1	Block-Bearing	27	100-1668	2	Screw-HHF

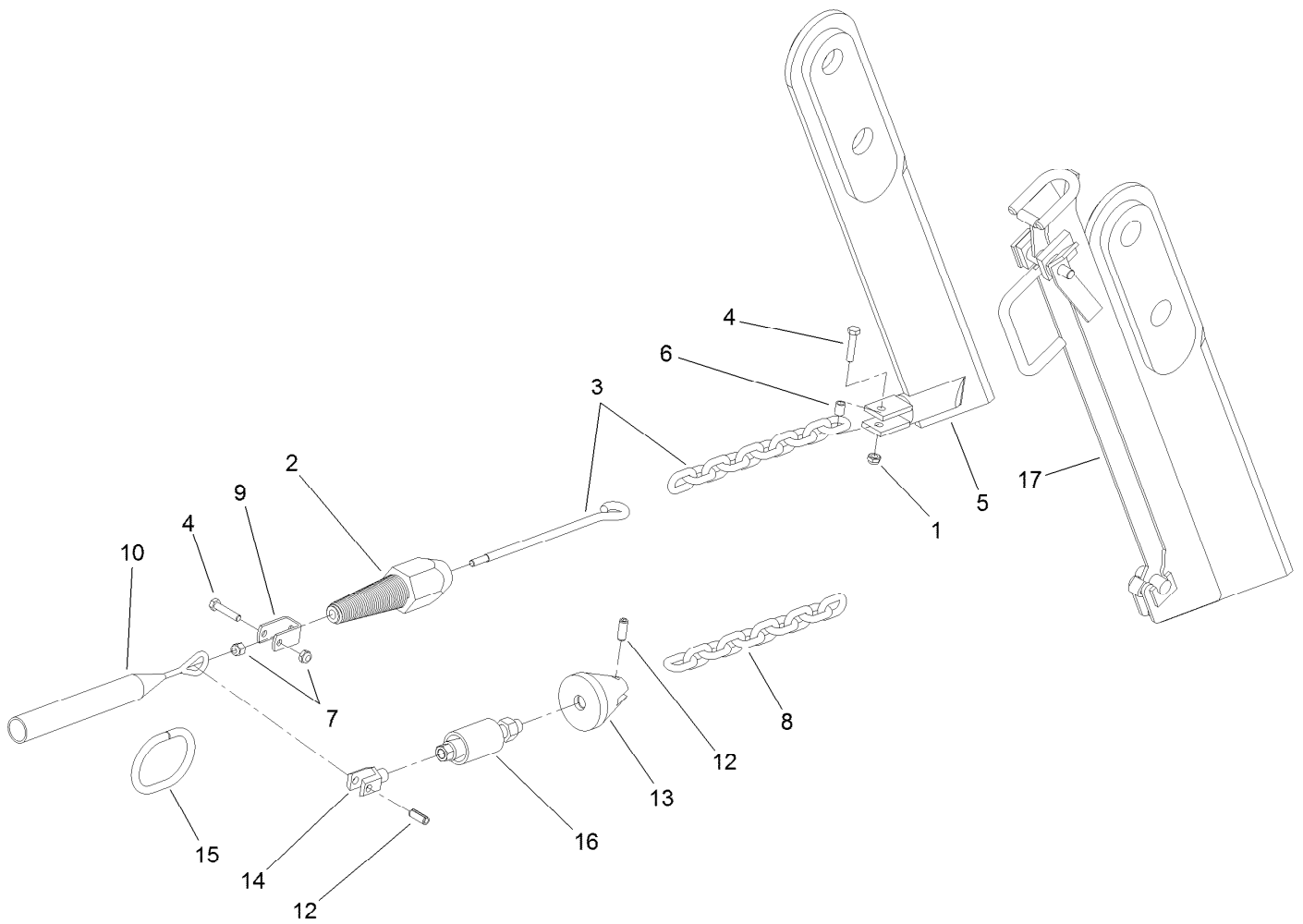


## Hydraulic Assembly

Ref.	Part Number	Qty.	Description	Ref.	Part Number	Qty.	Description
1	99-2683	1	Motor-HYD	8	112-4882	1	Flow Valve ASM
1:1	99-8608	1	Seal Kit ●	9	112-4939-03	1	Plate-Spacer, Valve
2	340-17	3	Fitting-Elbow, 90 DEG	10	112-2776-03	1	Plate-Clamp
2:1	237-65	1	O-Ring	11	32128-35	3	Nut-HF
2:2	237-80	1	O-Ring	13	3235-23	3	Screw-HH
3	323-6	2	Screw-HH	14	112-2768	1	HYD Hose ASM
4	112-2766	1	HYD Hose ASM	14:1		1	Fitting-Straight ■
5	105-4333	1	Hose-HYD	14:1:1	237-80	1	O-Ring
6	340-7	1	Fitting-Straight	15	112-2769	1	HYD Hose ASM
6:1	237-65	1	O-Ring	15:1		1	Fitting-Straight ■
6:2	237-80	1	O-Ring	15:1:1	237-80	1	O-Ring
7	340-22	1	Fitting-Tee	16	104-6134	1	Coupler-Face, Flush
7:1	237-65	2	O-Ring	17	100-4701	1	Nipple-Connect, Pressure
7:2	237-80	1	O-Ring	17:1	100-6120	1	Seal Kit ●

● Not illustrated

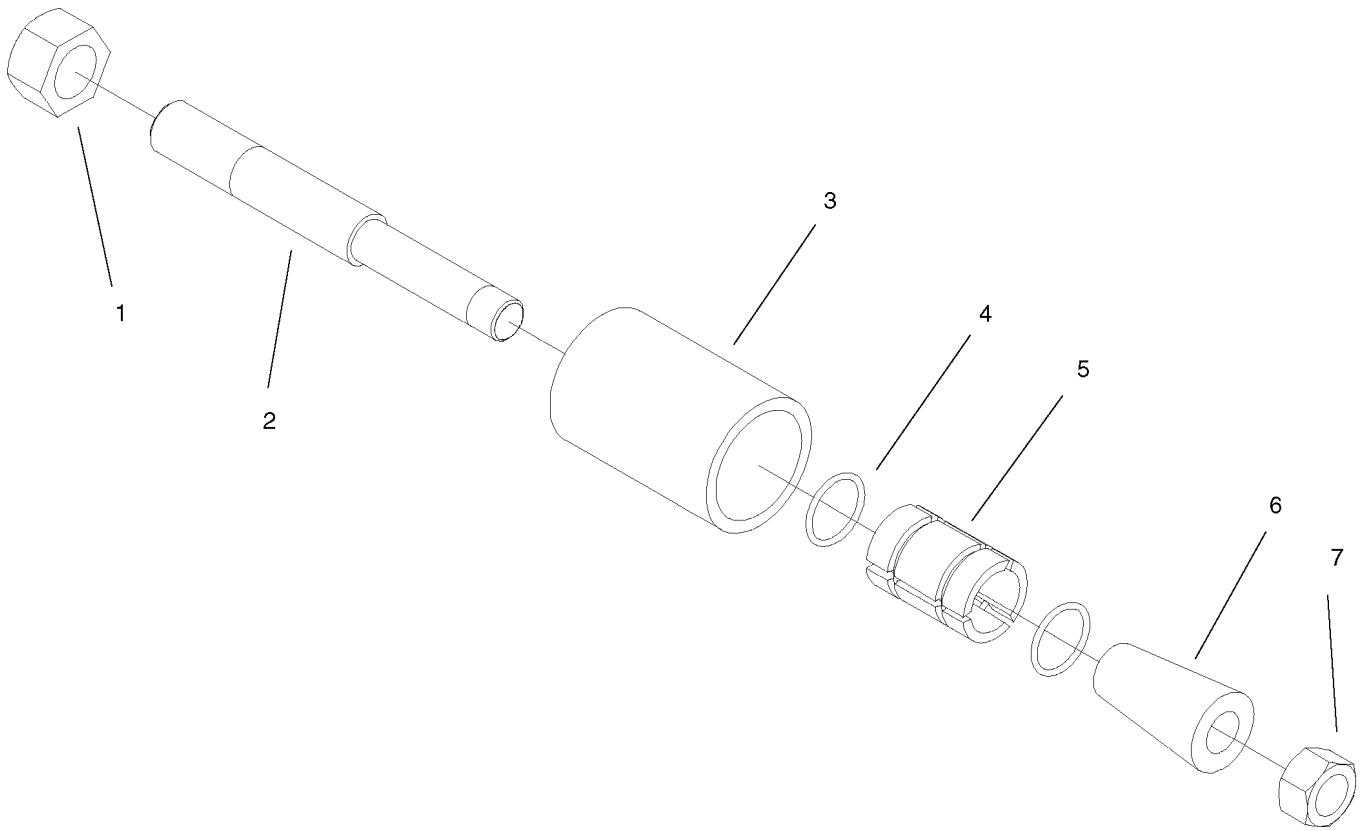
■ Not serviced separately



## Optional Blade and Puller Assembly

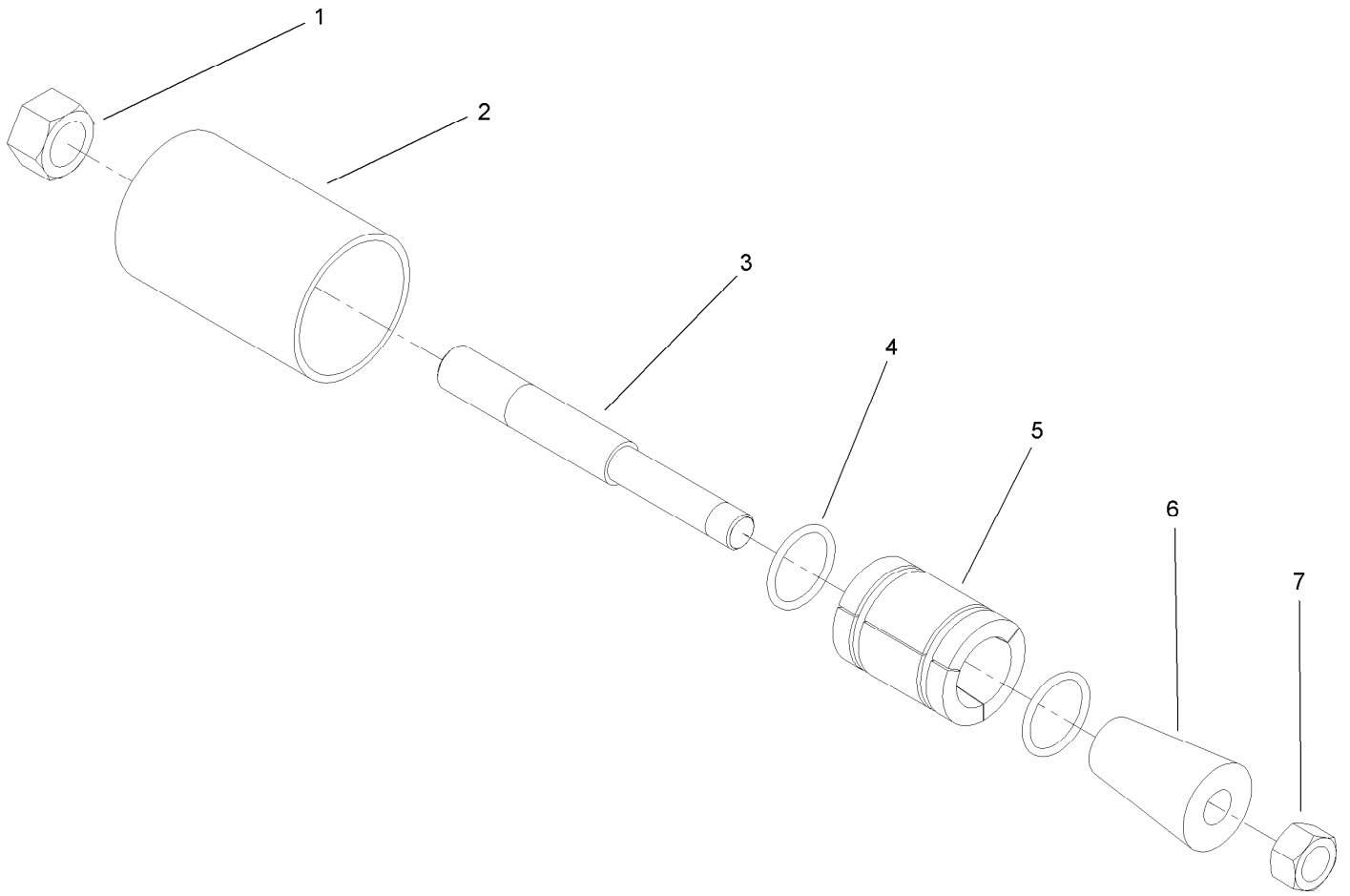
<i>Ref.</i>	<i>Part Number</i>	<i>Qty.</i>	<i>Description</i>	<i>Ref.</i>	<i>Part Number</i>	<i>Qty.</i>	<i>Description</i>
1	3296-69	1	Nut-Lock, NI	9	100-1664	1	Clevis
2	104-0646	1	Puller-Pipe	10	100-1662	1	Basket-Grip (1.25-1.5)
3	100-0608	1	Chain ASM	10	100-1661	1	Basket-Grip (.75-1.25)
4	322-7	1	Screw-HH	12	32121-41	2	Pin-Roll
5	106-7646-03	1	Plow Blade ASM (.38 X 12)	13	100-6337	1	Bullet-Puller
5	99-2682-03	1	Plow Blade ASM (.25 X 12)	14	100-6338	1	Adapter-Chain
5	99-8600-03	1	Plow Blade ASM (.5 X 18)	15	100-0609	1	Link-Wire
5	99-8647-03	1	Plow Blade ASM (.38 X 18)	16	100-6285	1	Puller ASM (1 Inch)
6	99-8611	1	Spacer	16	100-6294	1	Puller ASM (2 Inch)
7	3296-39	1	Nut-Lock, NI	16	100-6290	1	Puller ASM (1.5 Inch)
8	99-8631	1	Chain	17	104-0640	1	Chuted Blade ASM





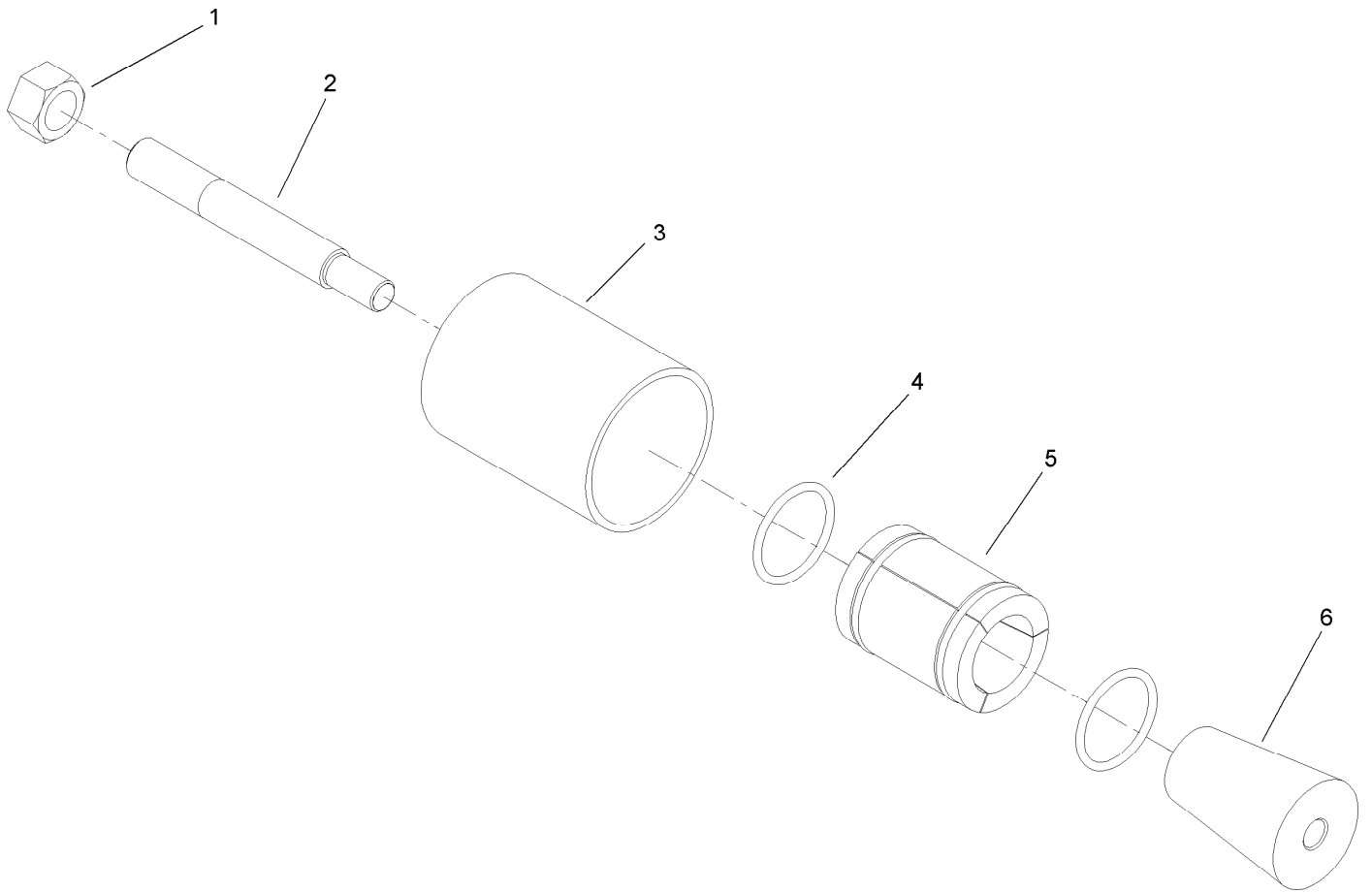
## 1 Inch Puller Assembly No. 100-6285

<i>Ref.</i>	<i>Part Number</i>	<i>Qty.</i>	<i>Description</i>
1	3219-6	1	Nut-Hex
2	100-6286	1	Rod-Puller
3	100-6289	1	Grip-Outer
4	237-145	2	O-Ring
5	100-6288	3	Grip-Inner
6	100-6287	1	Cone-Puller
7	3219-5	1	Nut-Hex



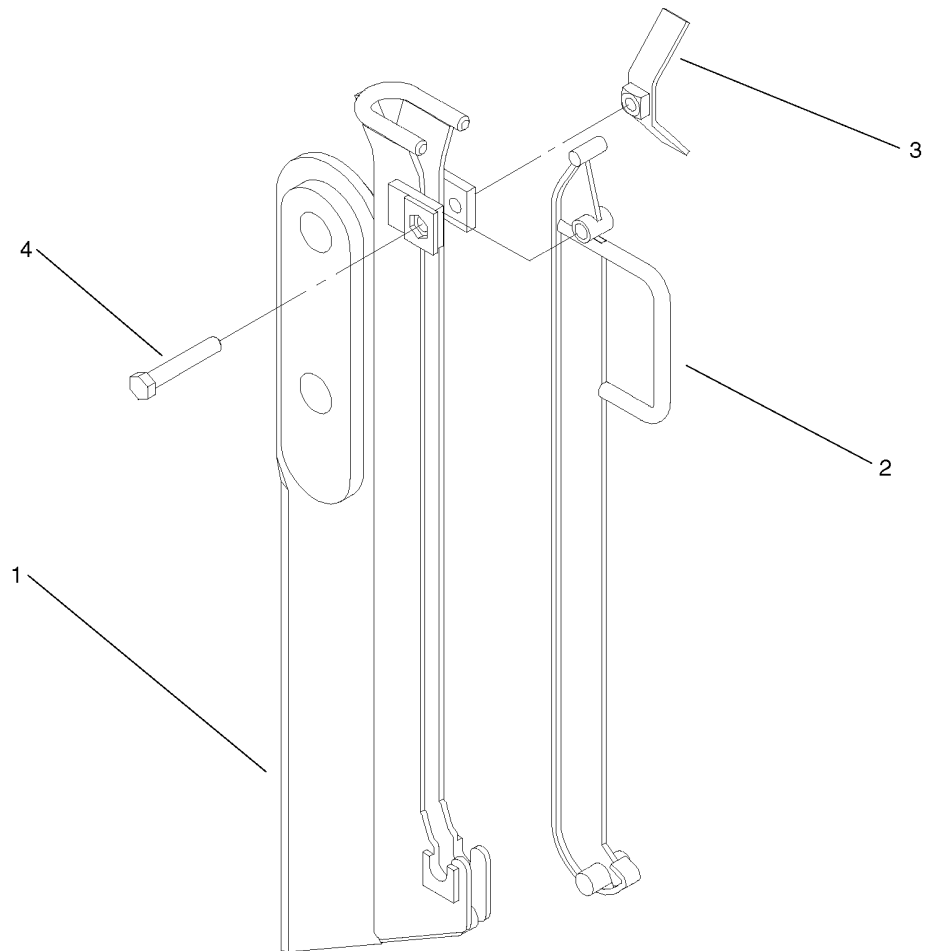
## 1.5 Inch Puller Assembly No. 100-6290

<i>Ref.</i>	<i>Part Number</i>	<i>Qty.</i>	<i>Description</i>
1	3219-6	1	Nut-Hex
2	100-6286	1	Rod-Puller
3	100-6293	1	Grip-Outer
4	237-179	2	O-Ring
5	100-6292	3	Grip-Inner
6	100-6291	1	Cone-Puller
7	3219-5	1	Nut-Hex



## 2 Inch Puller Assembly No. 100-6294

<i>Ref.</i>	<i>Part Number</i>	<i>Qty.</i>	<i>Description</i>
1	3219-6	1	Nut-Hex
2	100-6295	1	Rod-Puller
3	100-6298	1	Grip-Outer
4	237-187	2	O-Ring
5	100-6297	3	Grip-Inner
6	100-6296	1	Cone-Puller



## Chuted Blade Assembly No. 104-0640

<i>Ref.</i>	<i>Part Number</i>	<i>Qty.</i>	<i>Description</i>
1	104-2664	1	Blade-Chuted ●
2	104-2665	1	Guide-Blade
3	104-2666	1	Nut-Blade
4	325-12	1	Screw-HH

● Not serviced separately

**Notes:**

**Notes:**

**Notes:**



**Count on it.**