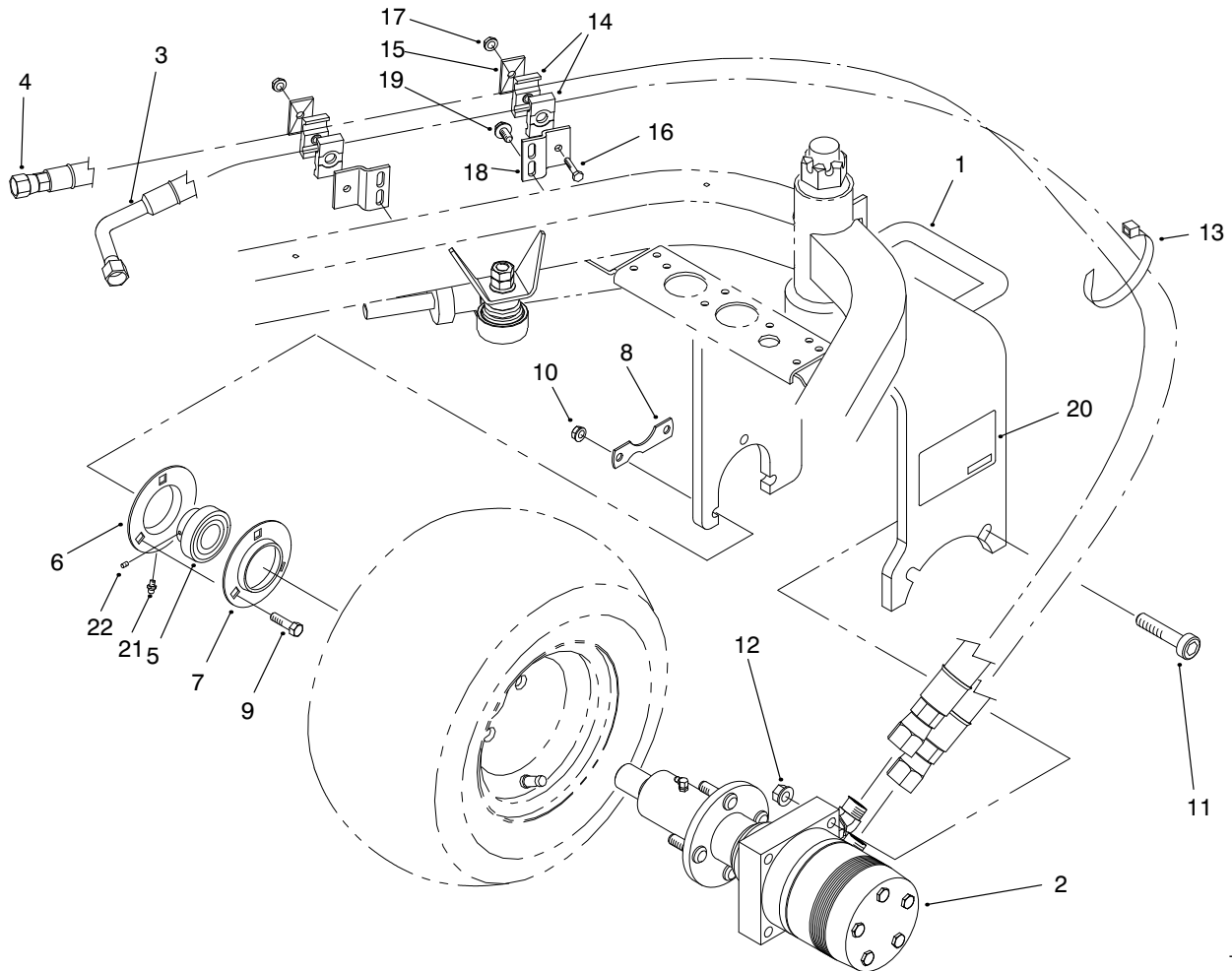


**TORO**<sup>®</sup>

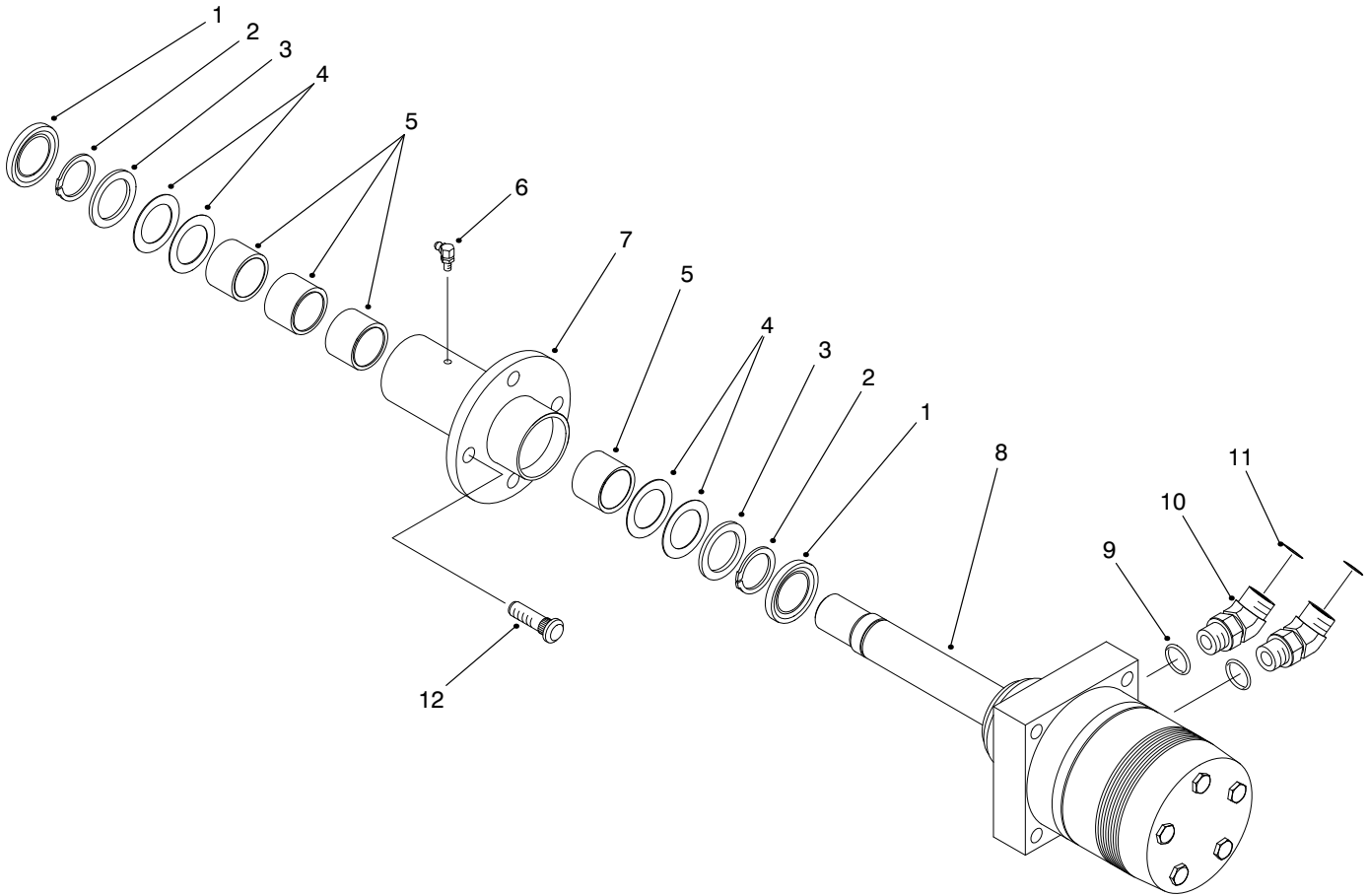
MODEL NO. 04550

**PARTS  
CATALOG****3-WHEEL DRIVE KIT  
GREENSMMASTER<sup>®</sup> 3200/3200D**

T-2534

**DRIVE MOTOR INSTALLATION ASSEMBLY**

Ref. No.	Part No.	Description	No. Used	Ref. No.	Part No.	Description	No. Used
1	95-0513	Fork - Castor (Incl. Ref. #20)	1	11	3274-93	Screw - HSH	2
2	95-0514	Asm. - Hyd. Motor & Hub	1	12	3296-23	Nut - Lock	2
3	95-0517	Hose - Hydraulic	1	13	3290-378	Tie - Cable	1
4	95-0518	Hose - Hydraulic	1	14	56-7974	Clamp - Tube	4
5	251-352	Bearing (Incl. Ref. #21)	1	15	69-9761	Plate - Cover	2
6	85-8940	Flangette - Relube	1	16	42-9510	Screw - HH	2
7	85-8950	Flangetter - Std.	1	17	33024-00	Nut - Lock	2
8	88-8350	Tab - Bearing	1	18	95-0516	Bracket - Clamp	2
9	323-29	Screw - HH	3	19	32144-14	Screw - HWHTF	4
10	3296-39	Nut - Lock	3	20	92-9752	Decal - 3 WD	2
				21	302-5	Fitting - Grease	1
				22		Screw - Set	2

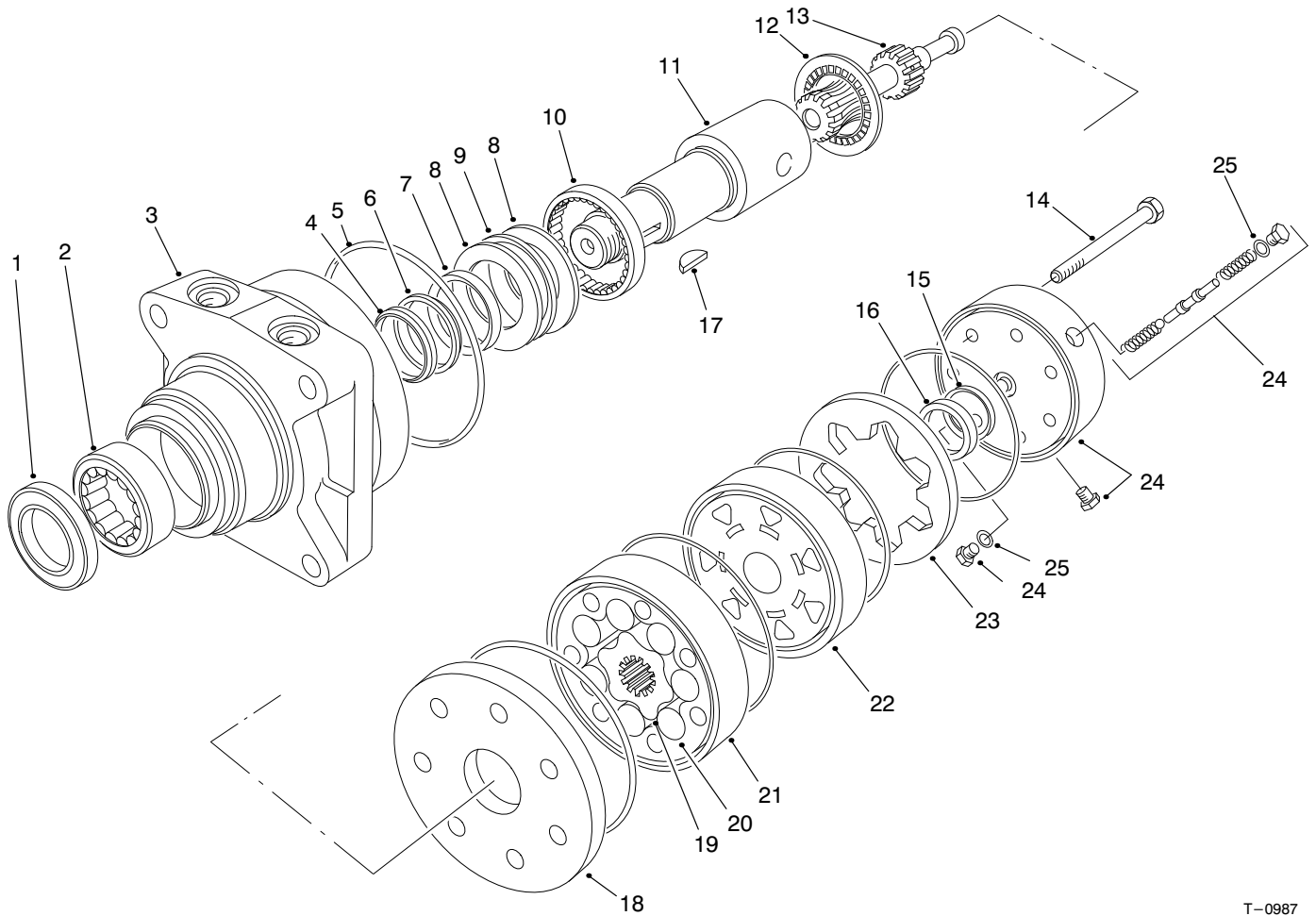


T-2556

## HYDRAULIC MOTOR & HUB ASSEMBLY NO. 95-0514

Ref. No.	Part No.	Description	No. Used
1	92-9165	Seal - Grease	2
2	32151-10	Ring - Retaining	2
3	92-9159	Washer	2
4	92-9166	Washer - Thrust	4
5	92-9167	Bearing - Clutch, Roller	4
6	302-40	Fitting - Grease	1

Ref. No.	Part No.	Description	No. Used
7	92-9152	Hub	1
8	95-2902	Motor - Hydraulic	1
9	237-80	O-Ring	2
10	340-14	Fitting - Hydraulic 45°	2
11	237-65	O-Ring	2
12	10-6830	Stud - Drive	4

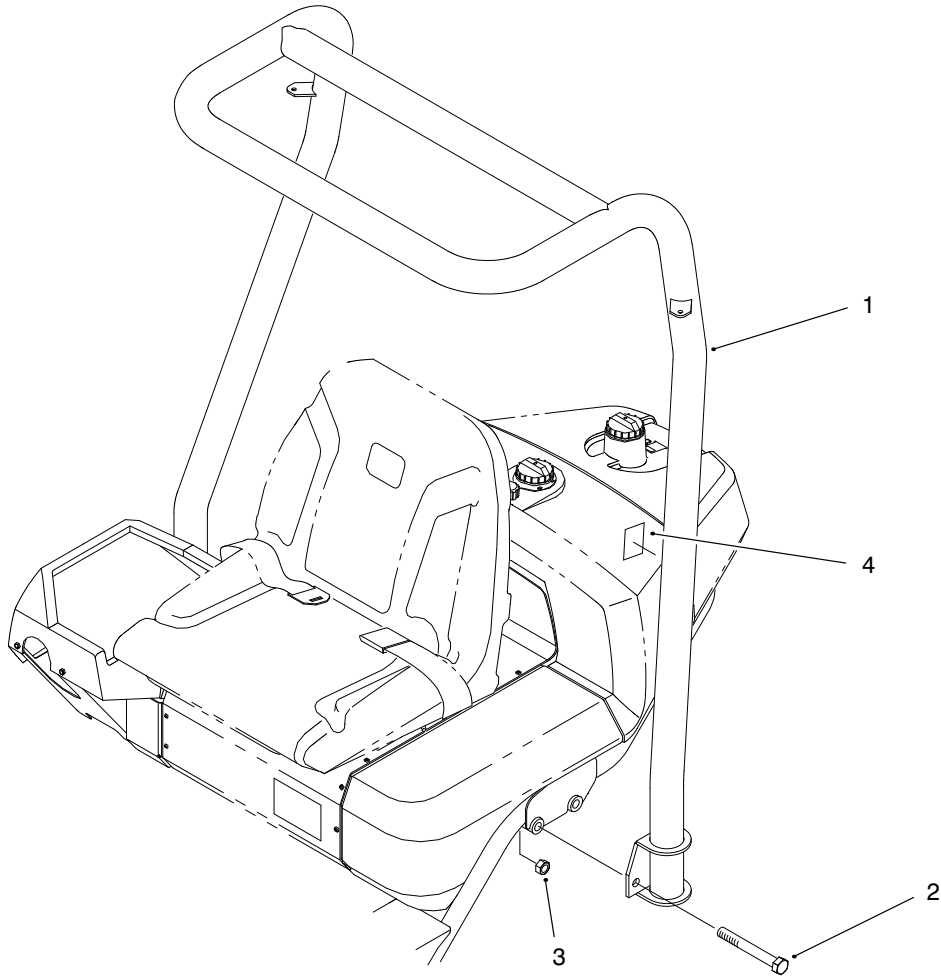


T-0987

## HYDRAULIC DRIVE MOTOR NO.95-2902

Ref. No.	Part No.	Description	No. Used	Ref. No.	Part No.	Description	No. Used
1		Seal - Dirt & Water	1	17	3257-42	Key - Woodruff	1
2		Bearing	1	18	92-9754	Plate - Wear	1
3		Housing	1	19		Rotor	1
4		Washer - Backup	1	20		Vane	7
5		Seal Rings	5	21		Stator	1
6		Washer - Backup	1	22	92-9755	Manifold	1
7		Seal - Inner	1	23		Ring - Commutator	1
8		Washer - Thrust	2	24	92-9759	Asm. - End Cover	1
9		Bearing - Thrust	1	*	92-9757	Rotor Set (Incl. Ref. #19-21)	1
10		Bearing	1	*	95-2904	Asm. - Commutator (Incl. Ref. #15-16 & 23)	1
11	92-9760	Shaft - Coupling	1	*	94-8178	Seal Kit (Incl. Ref. #1, 4-7 & 15)	1
12	76-0850	Bearing - Thrust	1	*	92-9753	Asm. - Housing (Incl. Ref. #2, 3 & 8-10)	1
13	92-9758	Link - Drive	1				
14	92-9756	Screw - HH	7				
15		Seal - Commutator	1				
16		Communtator	1				

\*Not Illustrated

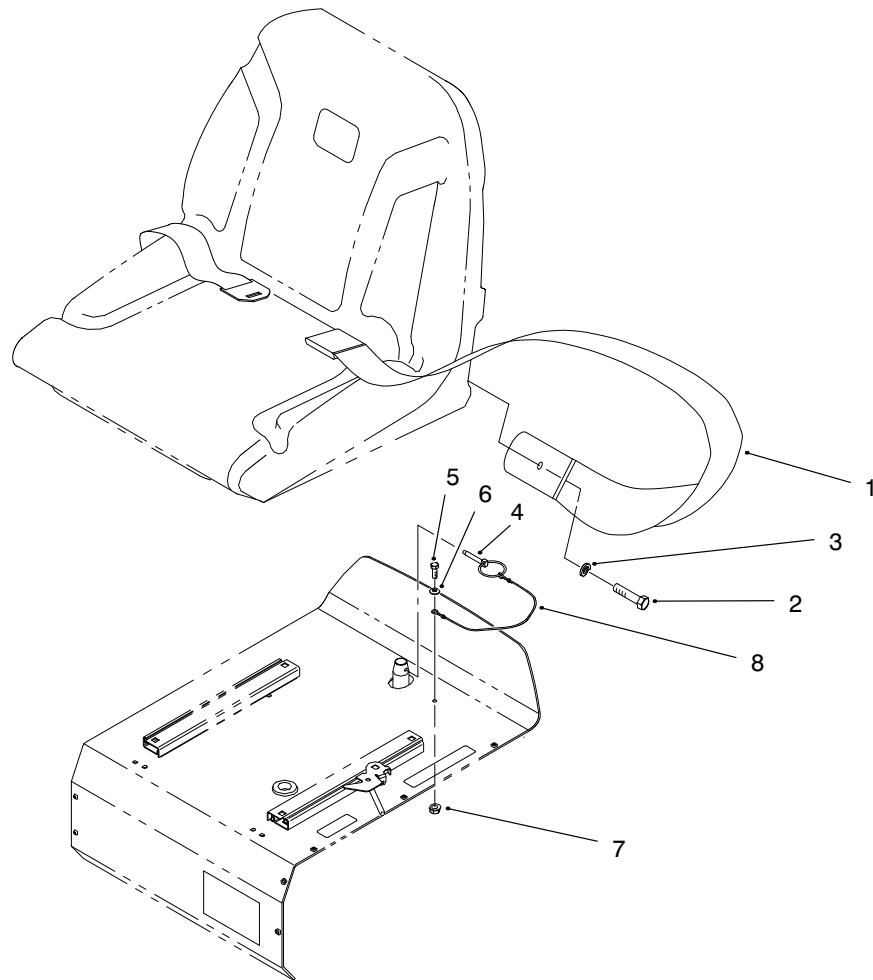


T-2549-2

## ROLL OVER PROTECTION SYSTEM – MODEL NO. 04552

Ref. No.	Part No.	Description	No. Used
1	94-5400	Frame – ROPS Asm.	1
2	327-23	Screw – HH	4

Ref. No.	Part No.	Description	No. Used
3	3296-53	Nut – Hex.	4
4	95-2928	Decal – ROPS	1



T-2548-1

## ROLL OVER PROTECTION SYSTEM – SEAT BELT ASM.

Ref. No.	Part No.	Description	No. Used	Ref. No.	Part No.	Description	No. Used
1	72-9390	Belt – Seat	1	5	33113-016	Screw – HH	1
2	3212-4	Screw – HH	2	6	3256-16	Washer – Flat	1
3	3253-6	Washer – Lock	2	7	33023-00	Nut – Lock	1
4	77-3780	Lynch Pin Assembly (Incl. Ref. #8)	1	8	28-8070	Lanyard	1

# TORO PART NUMBER INDEX

Part No.	Description	Pg. No.	Ref. No.	Qty.	Part No.	Description	Pg. No.	Ref. No.	Qty.
10-6830	Stud - Drive	2	12	4	95-0516	Bracket - Clamp	1	18	2
28-8070	Lanyard	5	8	1	95-0517	Hose - Hydraulic	1	3	1
42-9510	Screw - HH	1	16	2	95-0518	Hose - Hydraulic	1	4	1
56-7974	Clamp - Tube	1	14	4	95-2902	Motor - Hydraulic	2	8	1
69-9761	Plate - Cover	1	15	2	95-2904	Asm. - Commutator	3	*	1
72-9390	Belt - Seat	5	1	1	95-2928	Decal - ROPS	4	4	1
76-0850	Bearing - Thrust	3	12	1	237-65	O-Ring	2	11	2
77-3780	Lynch Pin Assembly	5	4	1	237-80	O-Ring	2	9	2
85-8940	Flangette - Relube	1	6	1	251-352	Bearing	1	5	1
85-8950	Flangetter - Std.	1	7	1	302-5	Fitting - Grease	1	21	1
88-8350	Tab - Bearing	1	8	1	302-40	Fitting - Grease	2	6	1
92-9152	Hub	2	7	1	323-29	Screw - HH	1	9	3
92-9159	Washer	2	3	2	327-23	Screw - HH	4	2	4
92-9165	Seal - Grease	2	1	2	3212-4	Screw - HH	5	2	2
92-9166	Washer - Thrust	2	4	4	3253-6	Washer - Lock	5	3	2
92-9167	Bearing - Clutch, Roller	2	5	4	3256-16	Washer - Flat	5	6	1
92-9752	Decal - 3 WD	1	20	2	3257-42	Key - Woodruff	3	17	1
92-9753	Asm. - Housing	3	*	1	3274-93	Screw - HSH	1	11	2
92-9754	Plate - Wear	3	18	1	3290-378	Tie - Cable	1	13	1
92-9755	Manifold	3	22	1	3296-23	Nut - Lock	1	12	2
92-9756	Screw - HH	3	14	7	3296-39	Nut - Lock	1	10	3
92-9757	Rotor Set	3	*	1	3296-53	Nut - Hex.	4	3	4
92-9758	Link - Drive	3	13	1	32144-14	Screw - HWHTF	1	19	4
92-9759	Asm. - End Cover	3	24	1	32151-10	Ring - Retaining	2	2	2
92-9760	Shaft - Coupling	3	11	1	33023-00	Nut - Lock	5	7	1
94-5400	Frame - ROPS Asm.	4	1	1	33024-00	Nut - Lock	1	17	2
94-8178	Seal Kit	3	*	1	33113-016	Screw - HH	5	5	1
95-0513	Fork - Castor	1	1	1	340-14	Fitting - Hydraulic 45°	2	10	2
95-0514	Asm. - Hyd. Motor & Hub	1	2	1					



