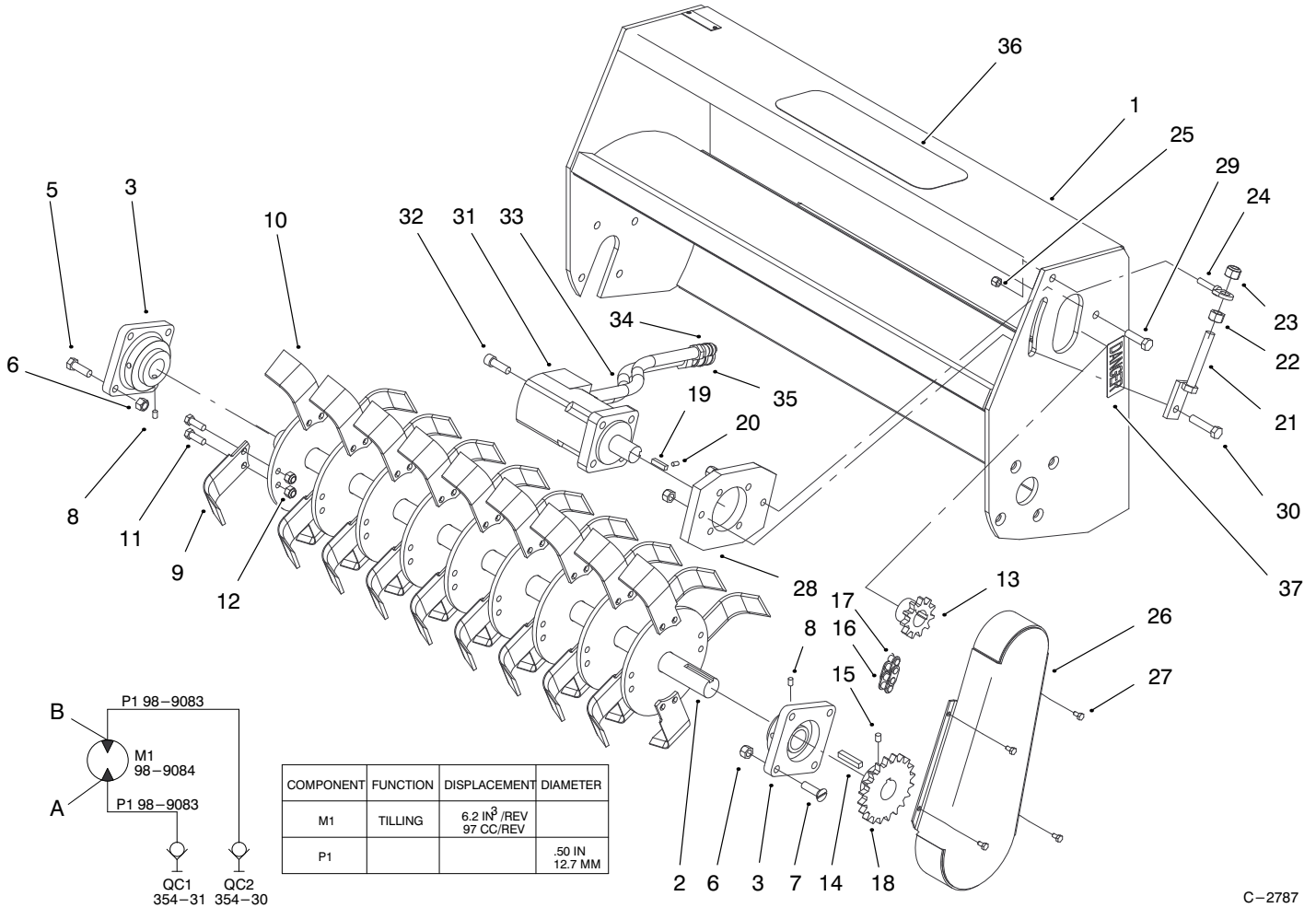




MODEL NO. 22445-890001 & UP

PARTS
CATALOG

TILLER ATTACHMENT
for Toro® Sitework™ Systems

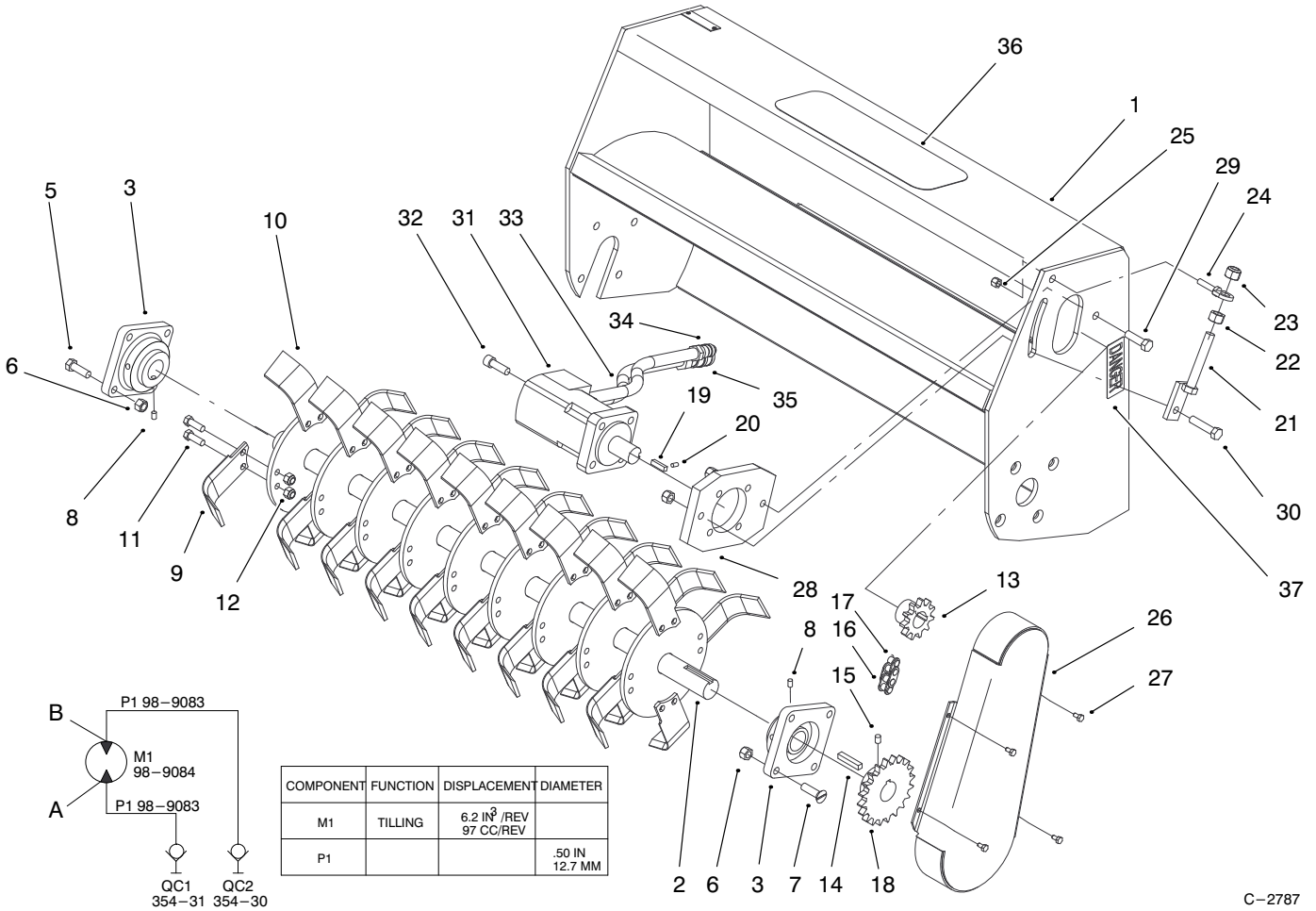


C-2787

TILLER ASSEMBLY

Ref. No.	Part No.	Description	No. Used
1	99-5046	Tiller Frame Asm (Incl. Ref. #37)	1
2	98-9087	Shaft - Tine	1
3	99-9979	Bearing Assembly	2
5	325-6	Screw - HH	4
6	3296-23	Nut - Hex Lock	10
7	98-9931	Bolt - Countersunk	4
8	3246-4	Screw - Set	2
9	99-9984	Tine - RH	18
10	99-9985	Tine - LH	18
11	324-29	Screw - HH	72
12	32146-7	Nut - Lock	72
13	98-9085	Sprocket	1
14	98-9935	Key - Square	1
15	3247-3	Screw - Set	2
16	98-9088	Chain - Roller	1

Ref. No.	Part No.	Description	No. Used
17	98-9089	Link - Connecting	1
18	98-9086	Sprocket	1
19	98-9934	Key - Square	1
20	3246-4	Screw - RH	2
21	98-9082	Chain Adjustment Asm.	1
22	3219-6	Nut - Hex	1
23	3296-41	Nut - Hex	1
24	99-5044	Holder - Adjustment	1
25	3296-23	Nut - Hex Lock	1
26	98-9071	Cover - Chain	1
27	321-2	Screw - HH	4
28	98-9070	Plate - Motor Mount	1
29	325-8	Screw - HH	1
30	325-10	Screw - HH	1
31	98-9084	Motor - Hyd.	1
32	3274-4	Screw - Cap, HSH	4

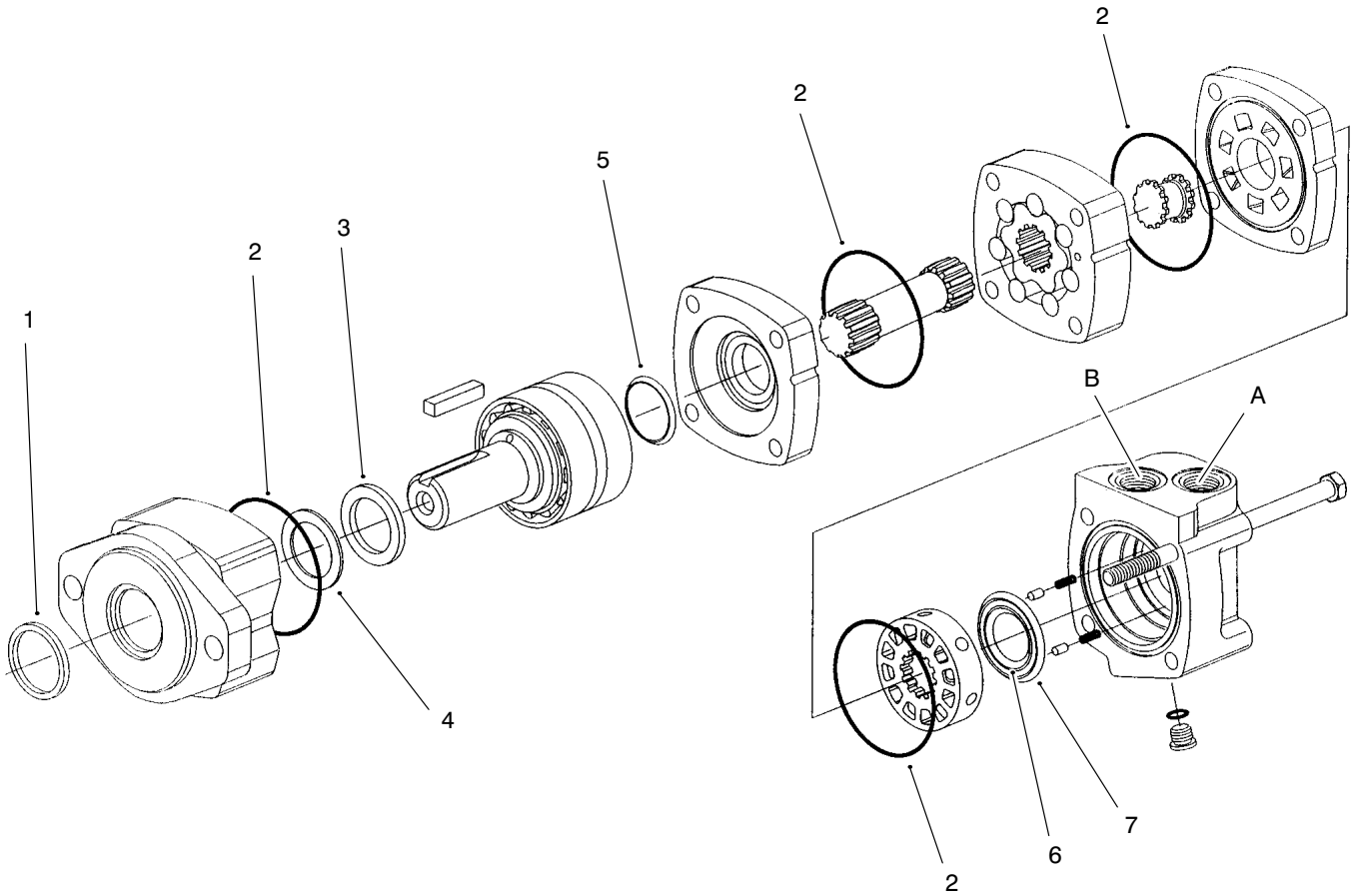


C-2787

TILLER ASSEMBLY (Continued)

Ref. No.	Part No.	Description	No. Used
33	98-9083	Hose Asm	2
34	354-31	Male - Quick Disconnect	1
35	354-30	Female - Quick Disconnect	1

Ref. No.	Part No.	Description	No. Used
36	98-4679	Decal - Front	1
37	93-7321	Decal - Danger	2



C-2754

HYDRAULIC MOTOR ASSEMBLY NO. 98-9084

Ref. No.	Part No.	Description	No. Used
†1		Seal - Dust	1
†2		Seal - O-Ring	4
†3		Seal - Shaft	1
†4		Back-up Washer	1
†5		Seal - Shaft	1

Ref. No.	Part No.	Description	No. Used
†6		Seal - Inner	1
†7		Seal - Outer	1
*	56-6890	Seal Kit (Incl. Ref. #1-7)	1

†Not Serviced Separately
*Not Illustrated

