



48cm Recycler[®]

Rear Bagging Mower

Model No. 20823- 9900001 & Up

Parts Catalog

ORDERING REPLACEMENT PARTS

To order replacement parts, please supply: the part number, the quantity, and the description of each part desired.

Contents

Description	Page	Description	Page
Deck Assembly	1	Engine Assembly	7
Handle Assembly	2	Blade Assembly	8
Handle Control Assembly	3	Engine GTS 200	9-17
Deck Suspension Assembly	4	Toro Part Number Index	18-20
Gear Case Assembly #71-9600	5	Maintenance	21
Bag and Components Assembly	6		

Note:

Accessories

Description	Model / Parts No.	Description	Model / Parts No.
-------------	-------------------	-------------	-------------------

Part Description Abbreviations

Part descriptions in this catalog may include the following abbreviations.

Abbreviation	Meaning	Abbreviation	Meaning
AR	as required	HWHTF	hex washer head thread forming
ASM	assembly	INC	incorporated
CARR	carriage	LH	left hand
DEG	degrees	PH	pan head
FH	flat head	PPH	Phillips pan head
GA	gauge	PTO	power take off
HF	hex flange	RH	right hand
HFW	hex flange washer	SFH	slotted fillister head
HH	hex head	SH	square head
HHF	hex head flange	SHWH	slotted hex washer head
HHST	hex head self tapping	SPH	slotted pan head
HJ	hex jam	STD	standard
HOC	height-of-cut	TAP	self tapping
HS	hex socket	TH	truss head
HSBH	hex socket button head	TTH	Torx truss head
HSFH	hex socket flat head	WH	wing head
HSH	hex socket head		
HWH	hex washer head		

Important Format Explanations

This catalog uses special formats to convey information in illustrations and parts lists. Specifically, one format is used in conjunction with service assemblies and another with quantities associated with reference numbers.

Service Assemblies

Parts within service assemblies have reference numbers in the form $X:Y$. X is the reference number of the service assembly and Y is a sequential number unique to each part within the service assembly.

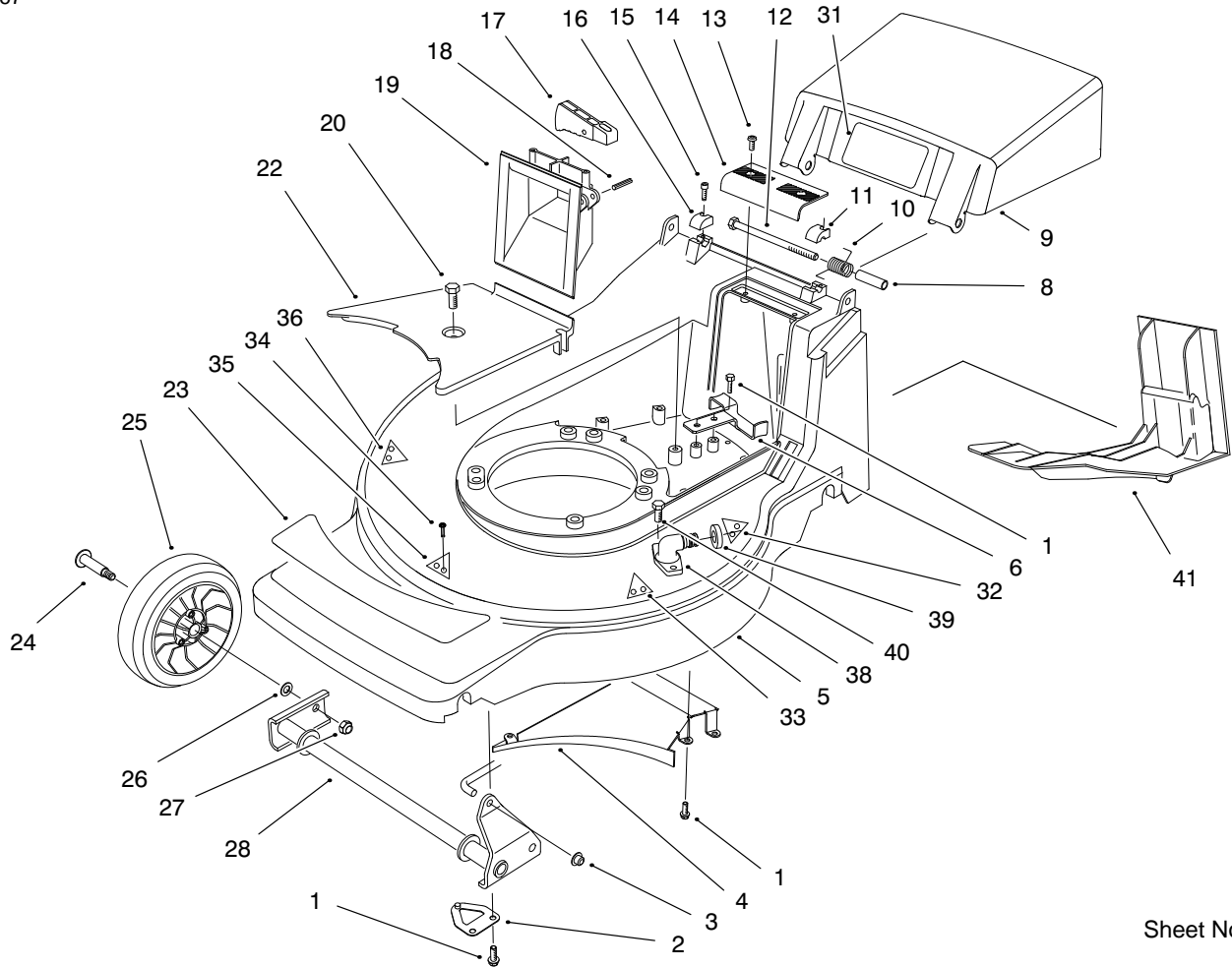
For example, a wheel assembly might be identified by reference number 6, the tire by 6:1, the valve by 6:2, and the wheel by 6:3. When you order the assembly identified by reference number 6, you receive all parts identified by reference numbers 6:1, 6:2, and 6:3. However, you may also order any part individually.

Reference numbers of this type appear in part lists and as callouts in illustrations.

Reference Numbers with Quantities

Illustrations may have a quantity in parentheses next to a reference number, in the form $X (Y)$. X is the reference number. Y in parentheses is the quantity of the part identified by the reference number.

For example, the illustration callout 4 (2) indicates that two parts are used in that instance.

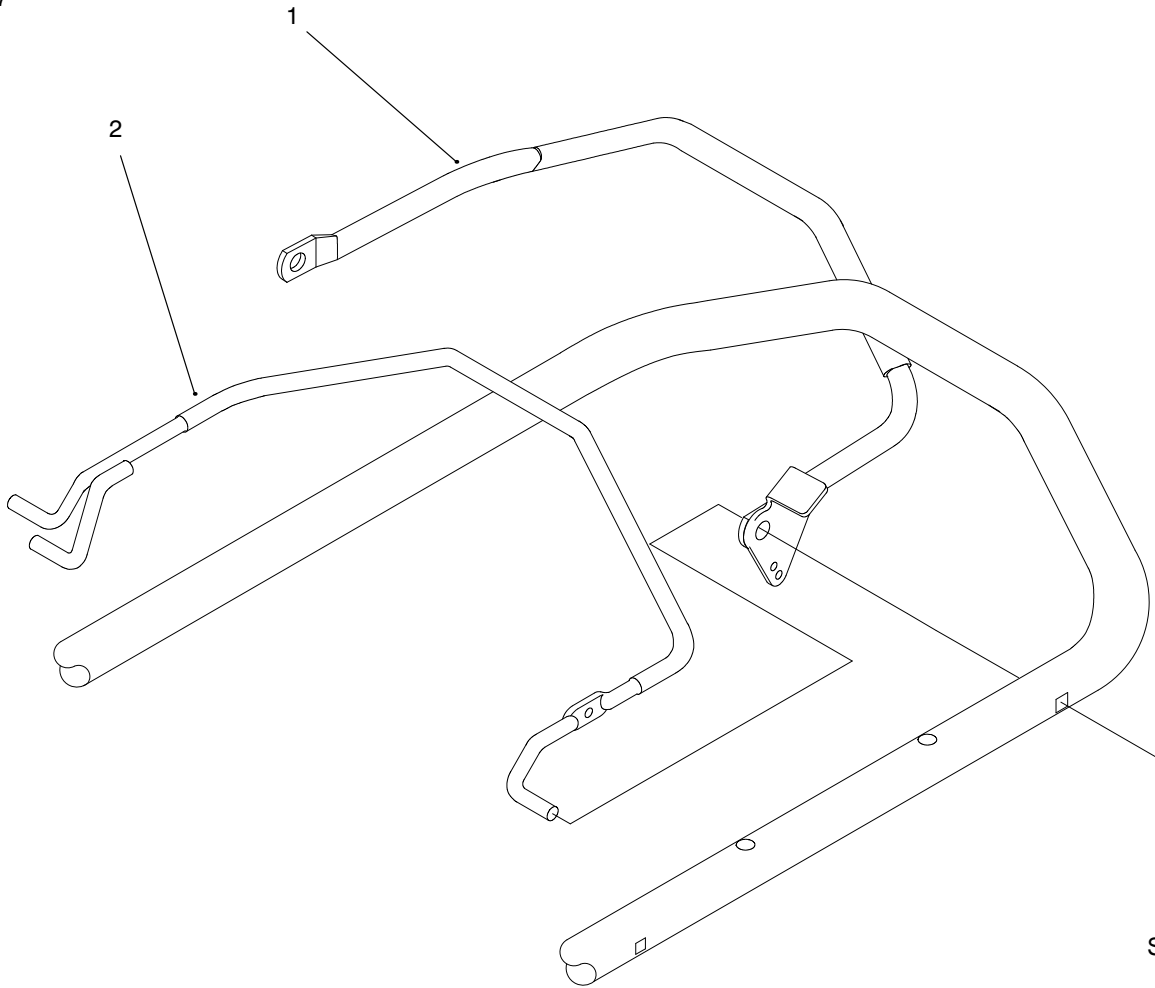


Sheet No.:2

Deck Assembly

Ref. No.	Part No.	Qty.	Description
1	32144-4	10	Screw-TAP
2	71-8830	2	Retainer-ASM
3	32112-11	1	Nut
4	71-7990	1	Ramp-Discharge
5	95-6135	1	Housing-Deck (Incl. Ref# 23, 32-36 & 38-40)
6	71-7890	1	Guide-Belt
8	71-8580	2	Spacer-Door
9	17-1569	1	Door-Discharge (Incl. Ref. #31)
10	71-9840	2	Spring-Door
11	71-7900	1	Cap-Bolt LH
12	322-29	2	Screw-HH
13	32144-97	2	Screw-PPH
14	71-7860	1	Grip-Upper
15	65-5210	2	Screw-Tf
16	71-7910	1	Cap-Bolt RH
17	71-7930	1	Trigger-HOC
18	3284-5	1	Pin-Groove
19	71-7870	1	Grip-Lower
20	32144-70	1	Screw-TAP
22	71-7920	1	Cover-Belt
23	92-7863	1	Decal-Deck
24	92-1057	2	Bolt-Wheel
25	92-9591	2	Wheel & Tire ASM

Ref. No.	Part No.	Qty.	Description
26	40-1940	2	Washer
27	603773	2	Nut-Lock
28	71-7820	1	Pivot
31	93-4105	1	Decal-Danger
32	71-9250	1	Kicker-Rear
33	71-9440	1	Kicker-Front
34	32144-11	8	Screw-TAP
35	71-8920	1	Kicker-Front
36	71-9230	1	Kicker-Rear
38	95-2747	1	Fitting-Washout
39	46-6290	1	O-Ring
40	46-6811	2	Screw-HWH
41	71-9990	1	Plug-Recycler

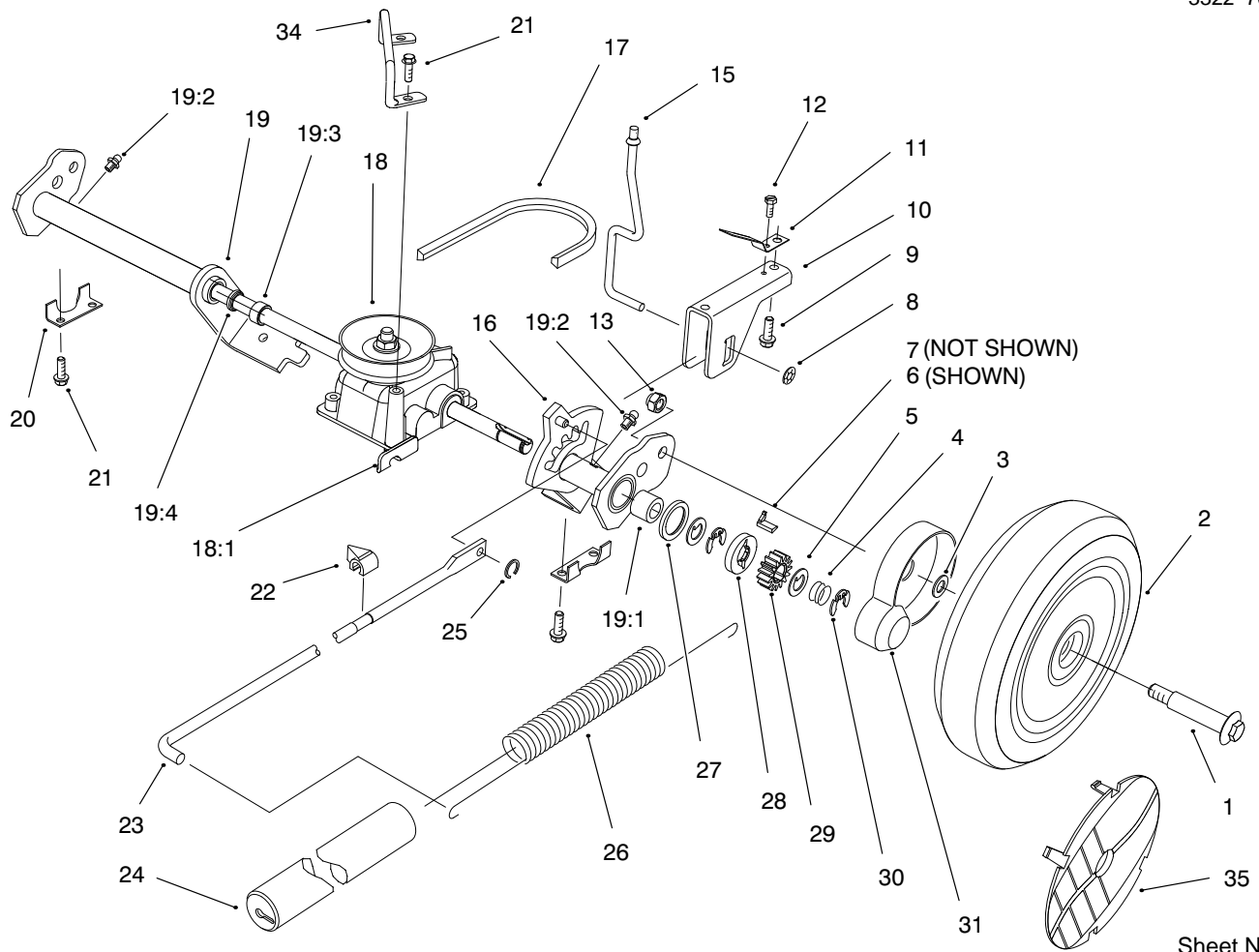


Sheet No.:4

Handle Control Assembly

Ref. No.	Part No.	Qty.	Description
1	95-4450	1	Bail-Traction
2	95-4454	1	Bail-Brake

Ref. No.	Part No.	Qty.	Description
----------	----------	------	-------------

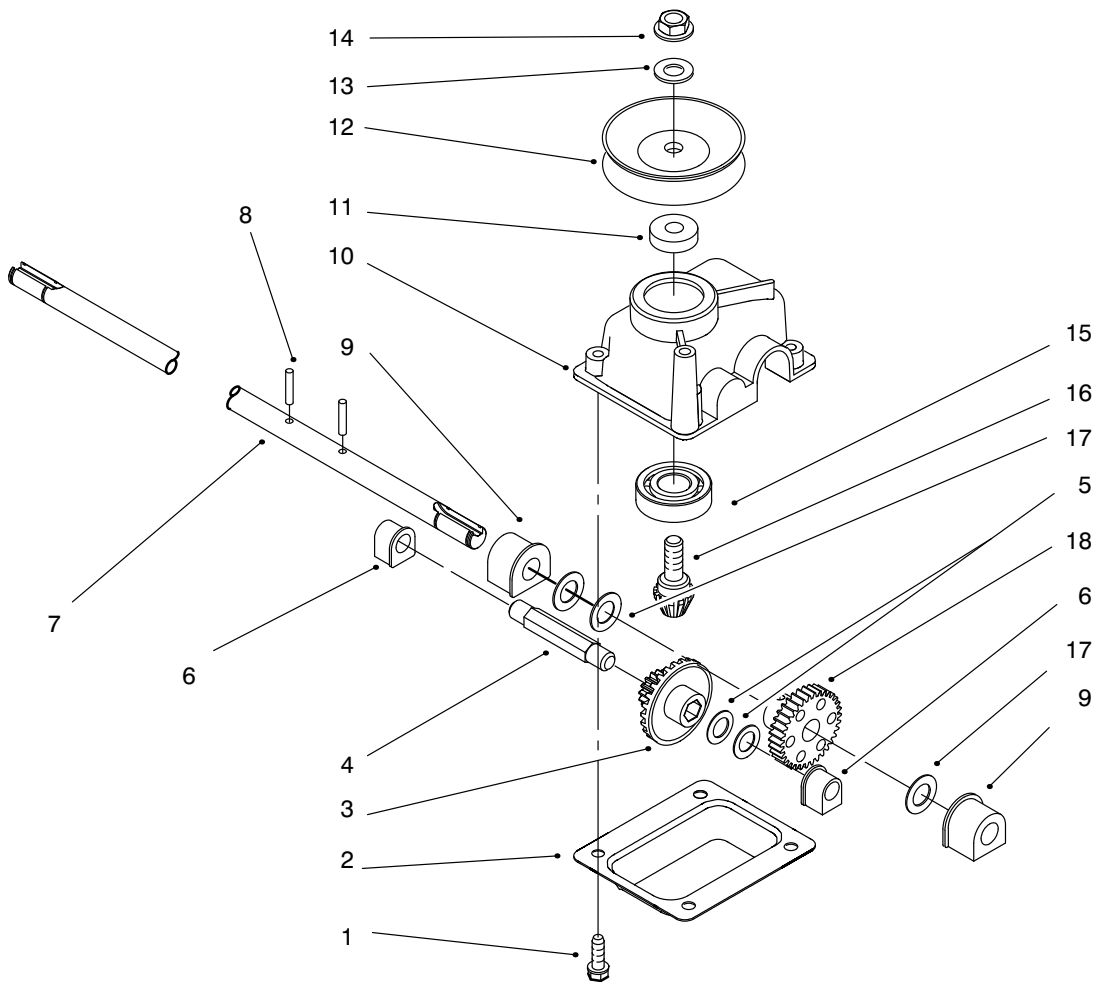


Sheet No.:5

Deck Suspension Assembly

Ref. No.	Part No.	Qty.	Description
1	92-1057	2	Bolt-Wheel
2	99-8136	2	Wheel-ASM
3	74-1671	2	Spacer-Cover
4	65-4720	2	Spring-Compression
5	65-4740	4	Washer-Thrust
6	66-6050	1	Key-Rocking LH
7	66-6040	1	Key-Locking RH
8	32112-13	1	Nut-Push
9	63-8590	2	Screw
10	71-8080	1	Saddle-HOC
11	71-8060	2	Spring-Trigger
12	32144-31	1	Screw
13	603773	2	Nut-Lock
15	71-7840	1	Rod-Trigger
16	92-9677	1	Arm-Pivot LH
17	71-9450	1	V Belt
18	71-9600	1	ASM-Gear Case
18:1	98-2039	1	Bracket - Traction
19	92-9680	1	Arm-Pivot RH

Ref. No.	Part No.	Qty.	Description
19:1	48-2060	2	Bearing-Needle
19:2	302-26	2	Fitting-Grease
19:3	47-2890	2	Bushing
19:4	47-6730	2	Seal-Oil
20	71-7770	2	Plate-Securing
21	32144-4	6	Screw-TAP
22	71-7980	1	Indicator-HOC
23	71-7970	1	Rod-Link
24	71-8450	1	Cover-Spring
25	32151-93	1	Ring-Grip
26	71-7740	1	Spring
27	65-4710	2	Ring-Friction
28	65-4760	2	Washer
29	65-4750	2	Gear-Pinion
30	65-2720	4	Ring-Retaining
31	74-1660	2	Cover-Wheel
34	95-2740	1	Retainer-Belt
35	92-7663	1	Cover-Wheel



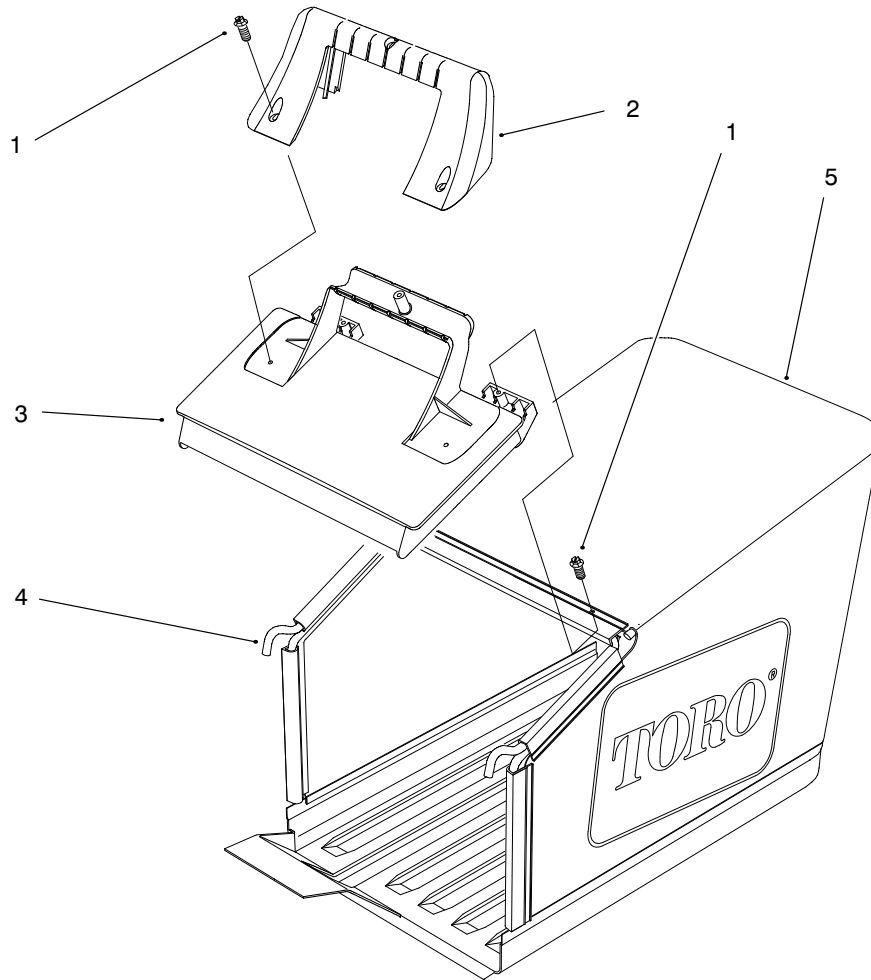
C-1292

Gear Case Assembly #71-9600

Ref. No.	Part No.	Description	No. Used
1	49-2040	Screw – Taptite	4
2	614668	Cover – Gear Case	1
3	55-3760	Pinion – 15 Tooth	1
4	614696	Shaft – Intermediate	1
5	36-4791	Washer	2
6	60-8750	Bushing	2
7	71-9620	Shaft – Output	1
8	32121-114	Pin – Groove	2
9	60-8850	Bushing – Output	2
10	614578	Cover – Gear Case	1
11	62-6660	Spacer	1
12	71-9610	Pulley – Half	2
13	3256-24	Washer	1
14	3296-5	Nut	1
15	38-7820	Bearing – Ball	1
16	60-8890	Gear – Bevel Pinion	1
17	36-4780	Washer – Thrust	3
18	614596	Gear 34 Tooth	1
*	71-9600	Gear Case Ass'y Complete	1

Ref. No.	Part No.	Description	No. Used

* Not Illustrated

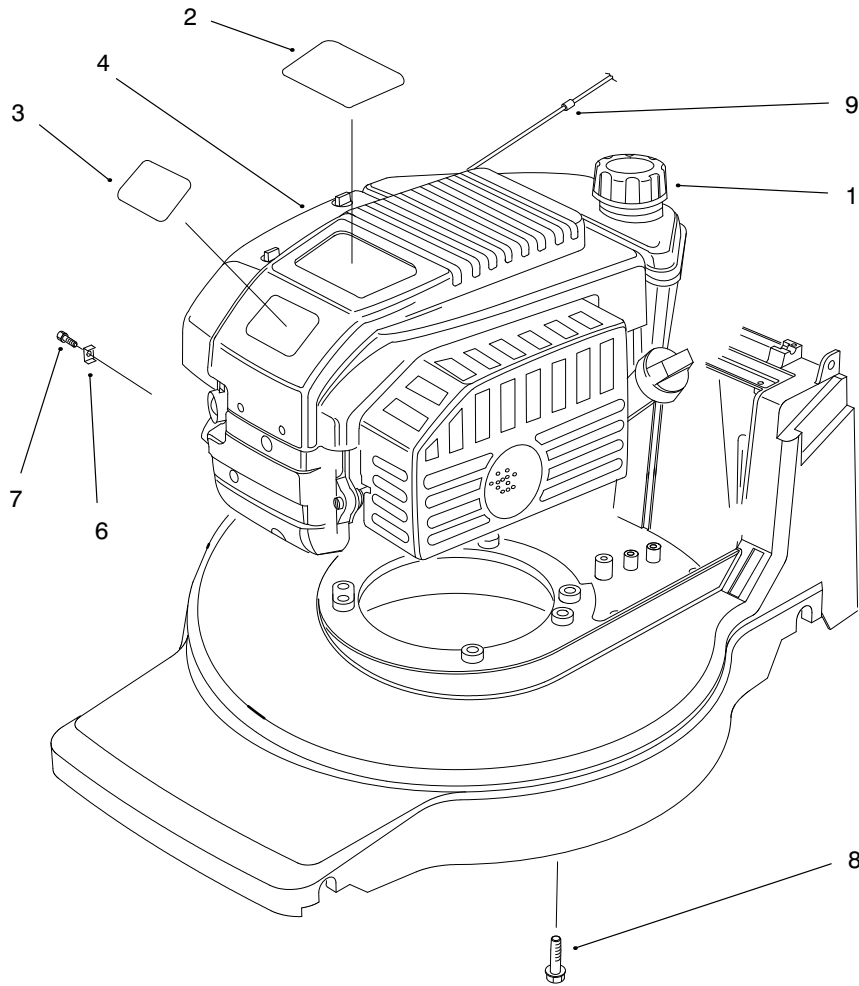


Sheet No.:6

Bag and Components Assembly

Ref. No.	Part No.	Qty.	Description
1	32144-111	5	Screw - PPH
2	71-9480	1	Handle-Door
3	71-9470	1	Door-Bag
4	71-9900	1	Frame
5	71-9460	1	Bag-Grass

Ref. No.	Part No.	Qty.	Description

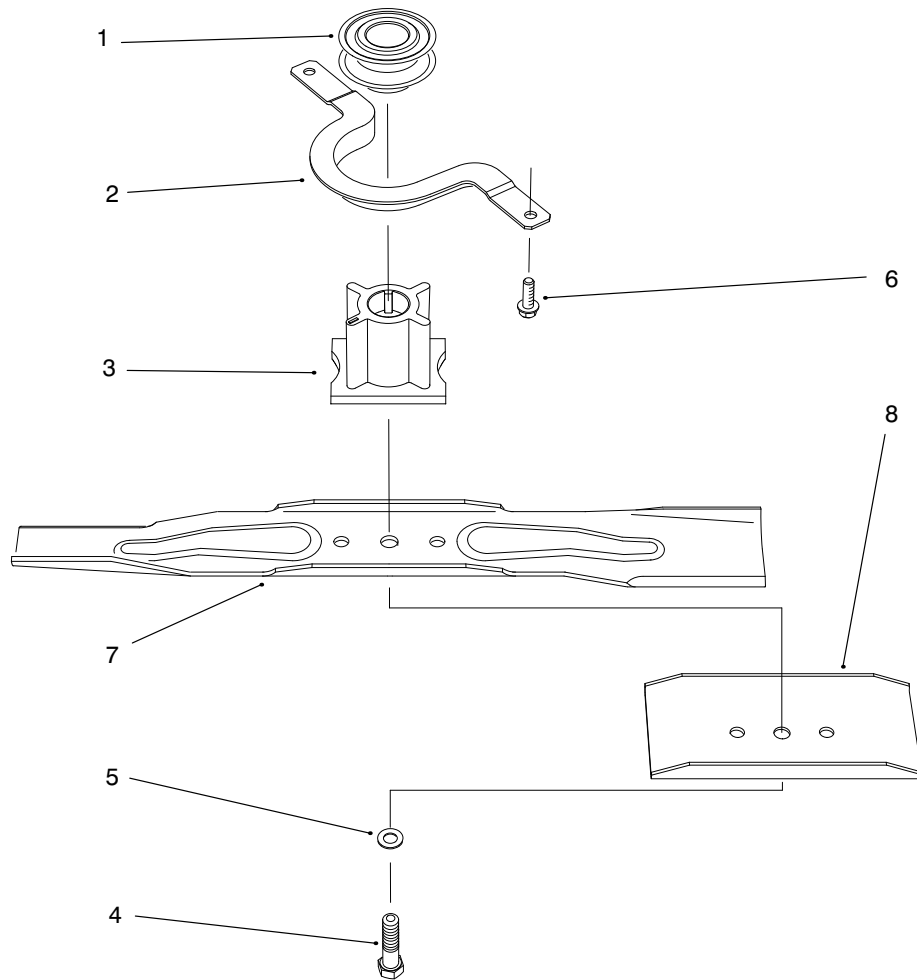


Sheet No.:8

Engine Assembly

Ref. No.	Part No.	Qty.	Description
1	93-7198	1	ASM-Cap
2	98-2004	1	Decal-Engine
3	92-2289	1	Plate-Logo
4		1	Engine-Gts Ohv 200
6	2210-249	1	Clamp-Casing
7	93-8470	1	Screw-Clamp
8	32144-102	3	Screw
9	2210-316	1	Rope-Stop

Ref. No.	Part No.	Qty.	Description

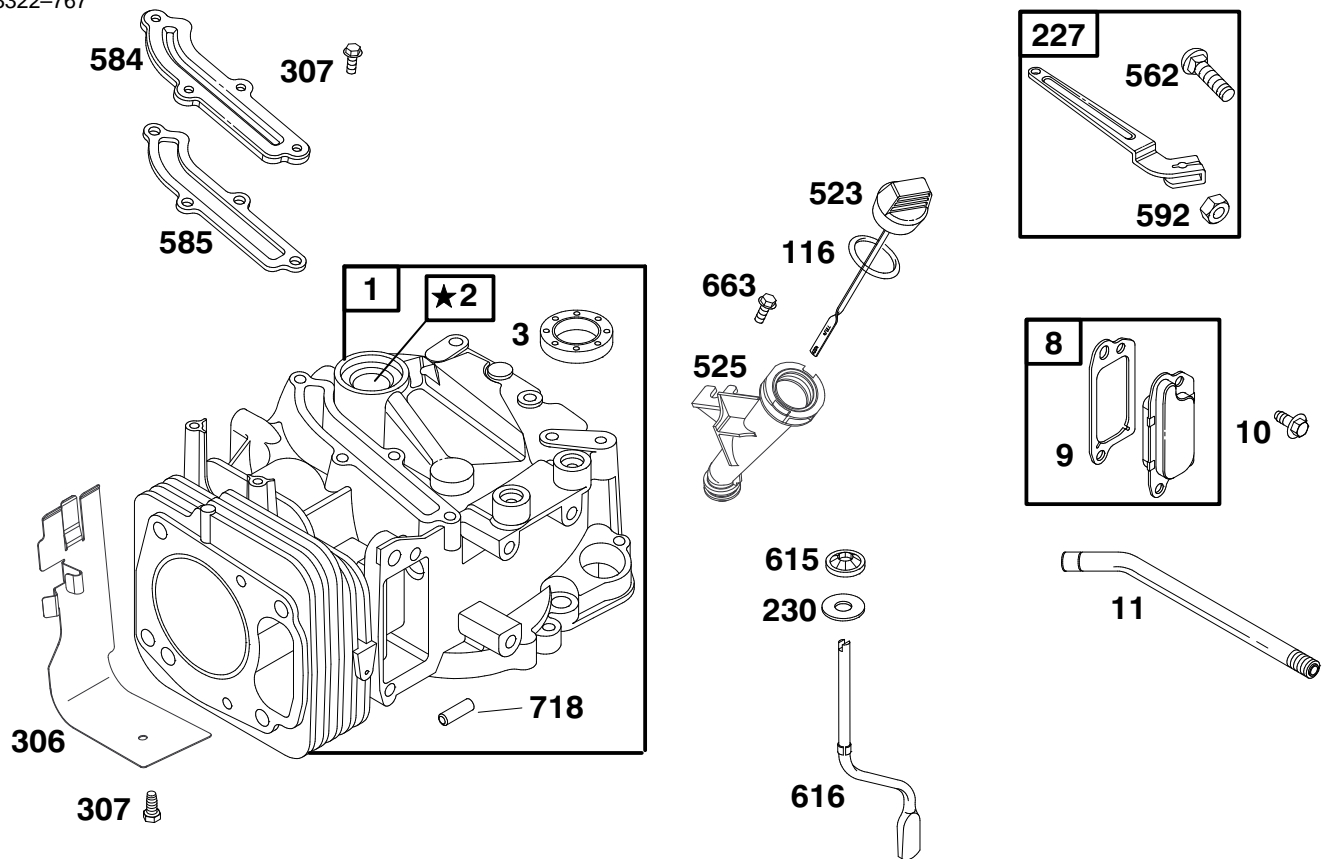


Sheet No.:9

Blade Assembly

Ref. No.	Part No.	Qty.	Description
1	62-7550	1	Pulley-Driver
2	71-7960	1	Guide-Belt Engine
3	71-7940	1	Retainer-Blade
4	26-0672	1	Bolt-Blade
5	3253-22	1	Washer-Lock
6	32144-4	2	Screw-TAP
7	71-9260	1	Blade-Recycler
8	80-0510	1	Stiffener-Blade

Ref. No.	Part No.	Qty.	Description



★ **REQUIRES SPECIAL TOOLS TO INSTALL. SEE REPAIR INSTRUCTION MANUAL.**

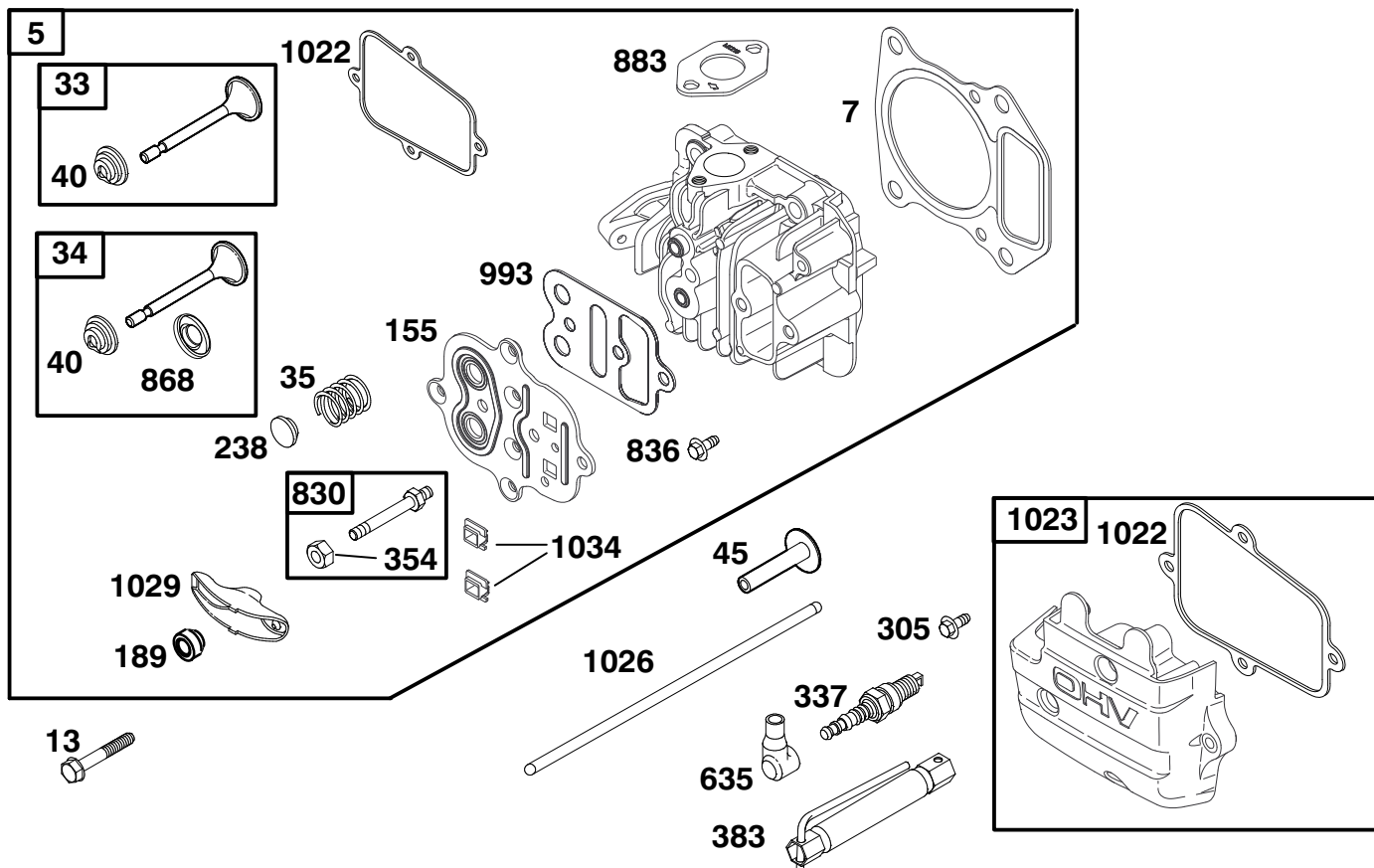
Assemblies include all parts shown in frames.

ENGINE GTS 200

Ref. No.	Part No.	Qty.	Description
1	99-0900	1	Cylinder Assembly
2	99-0911	1	Bushing
★3	99-0912	1	Seal - Oil
8	77-9260	1	Breather Assy.
†★9	99-0913	1	Gasket - Breather
10	99-0914	1	Screw - Hex.
11	99-0915	1	Tube - Breather
★116	99-0916	1	Seal - O Ring
227	99-0917	1	Lever Assembly - Gov.
230	99-0918	1	Washer - Gov. Crank
306	99-0919	1	Shield - Cylinder
307	99-0920	1	Screw - Hex.
523	77-7260	1	Dipstick
525	99-0906	1	Tube - Oil Filler
562	99-0921	1	Screw - Hex.
584	99-0922	1	Baffle - Cylinder
★585	99-0923	1	Gasket - Breather
592	99-0924	1	Nut - Hex.
615	99-0925	1	Fastener
616	99-0926	1	Crank - Governor
663	99-0927	1	Screw - Hex.
718	99-0928	1	Dowel - Sleeve

Ref. No.	Part No.	Qty.	Description

★ Included in Gasket Set-Part No. 99-0902. † Included in Valve Overhaul Gasket Set-Part No. 99-0904.



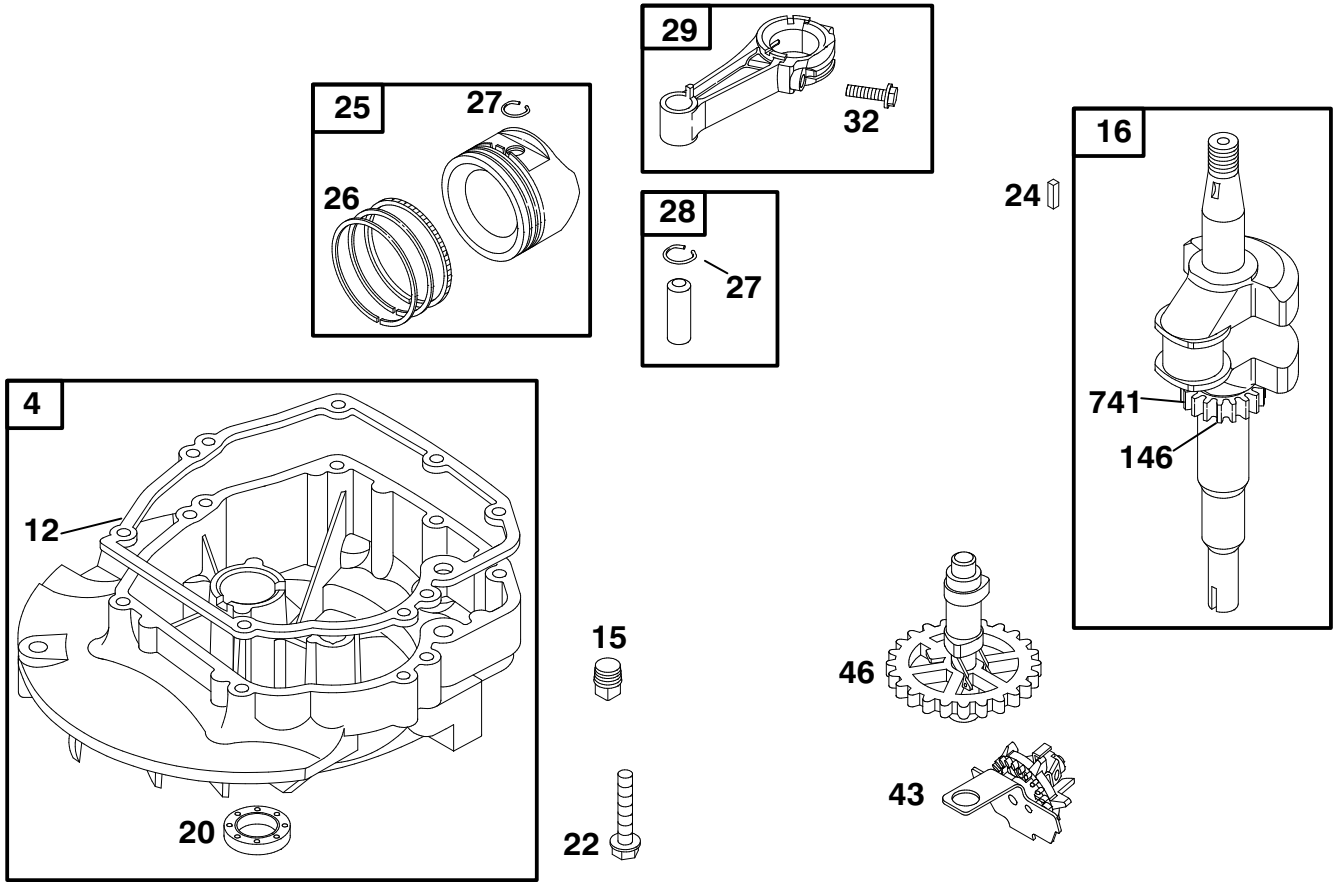
Assemblies include all parts shown in frames.

ENGINE GTS 200

Ref. No.	Part No.	Qty.	Description
5	99-0929	1	Head – Cylinder
†★7	99-0930	1	Gasket – Cylinder
		1	Head
13	99-0931	1	Screw – Hex.
33	99-0932	1	Valve – Exhaust
34	99-0933	1	Valve – Intake
35	99-0934	1	Spring – Valve
40	99-0935	1	Retainer – Valve
		1	Spring
45	99-0936	1	Tappet – Valve
155	99-0938	1	Plate – Cylinder Head
189	99-0939	1	Ball – Rocker Arm
238	99-0940	1	Cap – Valve
305	99-0942	1	Screw – Hex.
337	99-0943	1	Plug – Spark
354		1	Nut – Hex.
		1	(Sold in Kit Only).
383	99-0944	1	Wrench – Spark Plug
635	77-9190	1	Elbow – Spark Plug
830	99-0945	1	Stud – Rocker Arm
836	99-0941	1	Screw – Hex.
†★868	99-0946	1	Seal – Valve
†★883	99-0947	1	Gasket – Exhaust
†★993	99-6264	1	Gasket – PlateØ
†★1022	99-0907	1	Gasket – Rocker Cover

Ref. No.	Part No.	Qty.	Description
1023	98-9211	1	Cover – Rocker
1026	99-0949	1	Rod – Push
1029	99-0950	1	Arm – Rocker
1034	99-0951	1	Guide – Push Rod

★ Included in Gasket Set—Part No. 99-0920. † Included in Valve Overhaul Gasket Set—Part No. 99-0904.



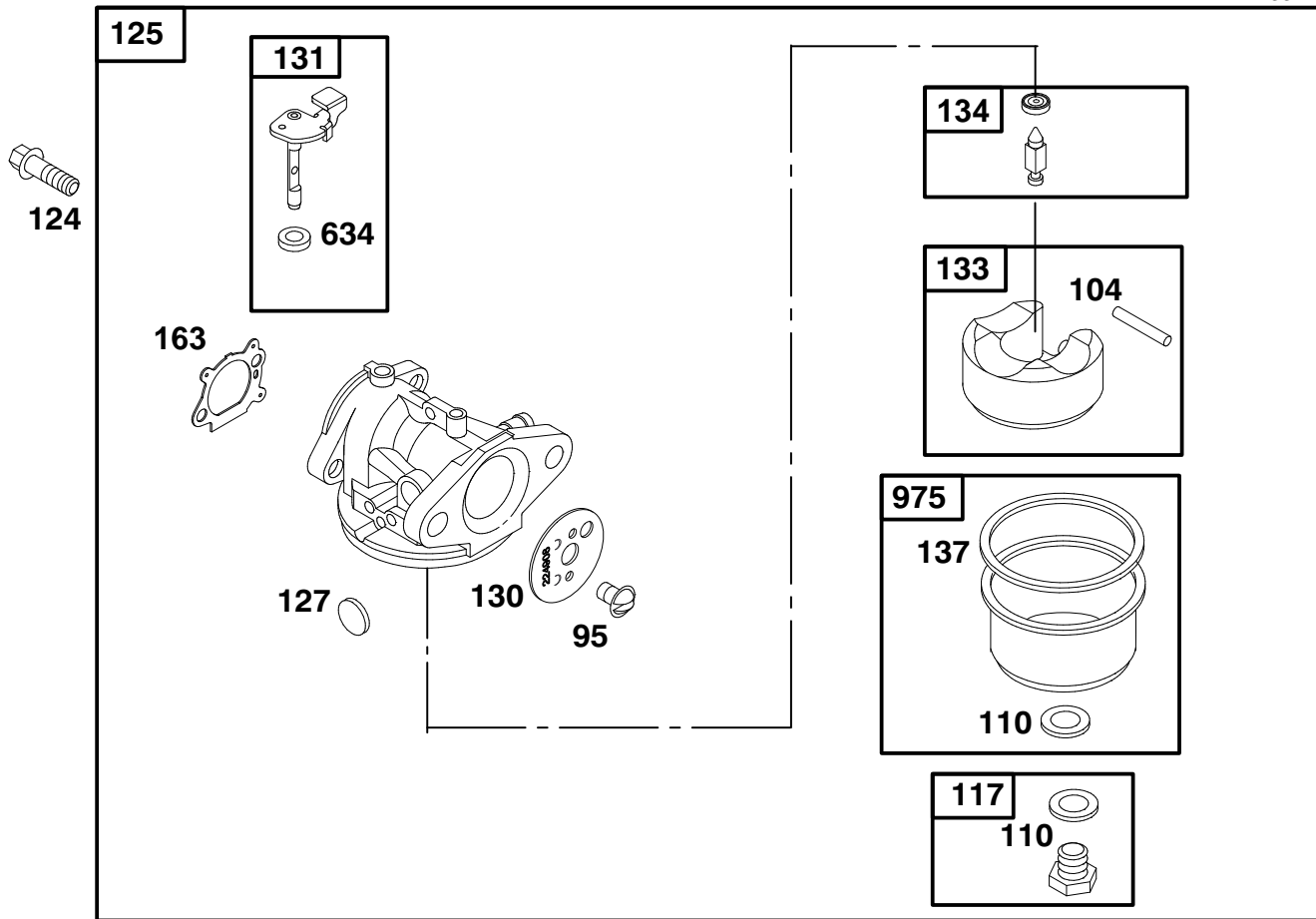
Assemblies include all parts shown in frames.

ENGINE GTS 200

Ref. No.	Part No.	Qty.	Description
4	99-0952	1	Sump – Engine
★12	99-0953	1	Gasket – Crankcase
15	99-0954	1	Plug – Oil Drain
16	98-9214	1	Crankshaft
★20	99-0955	1	Seal – Oil
22	99-0956	1	Screw – Hex. Note: 99-1042 Screw – Hex (One (1) Used in Hole Nearest Breather.)
24	99-0957	1	1Key – Flywheel
25	99-0958	1	Piston Assy. (Standard)
26	99-0959	1	Ring Set (Standard)
27	99-0960	1	Lock – Piston Pin
28	99-0961	1	Pin – Piston (Standard)
29	99-0962	1	Rod – Connecting
32	99-0963	1	Screw – Connecting Rod
43	99-0964	1	Governor/Oil Slinger
46	99-0965	1	Gear – Cam
146	99-0966	1	Key – Timing
741	99-0967	1	Gear – Timing

Ref. No.	Part No.	Qty.	Description

★ Included in Gasket Set—Part No.99-0902.



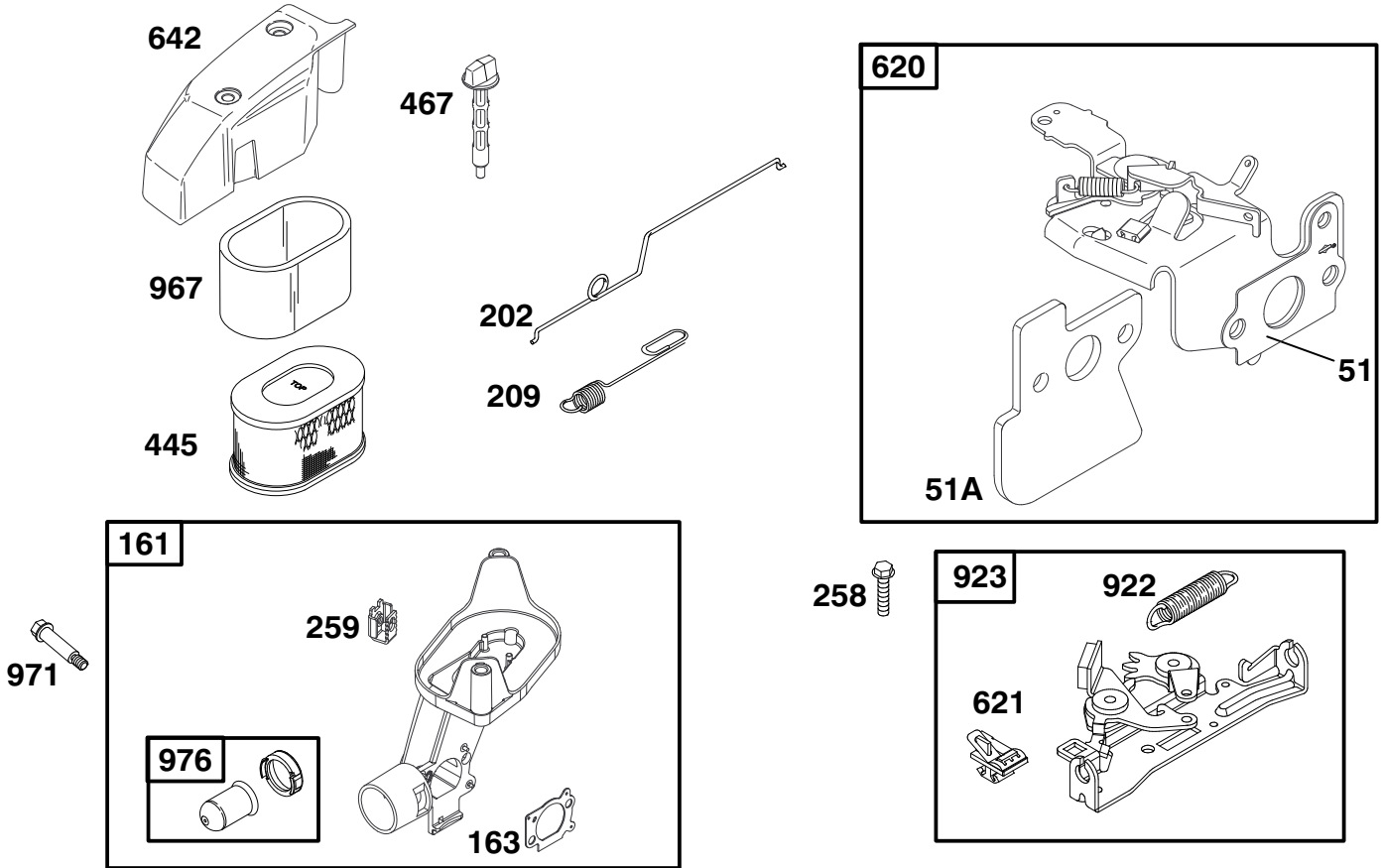
Assemblies include all parts shown in frames.

ENGINE GTS 200

Ref. No.	Part No.	Qty.	Description
95	99-0969	1	Screw – Slotted
●104	99-0970	1	Pin – Float Hinge
◆110		1	Washer – Bowl (Sold in Kit Only).
117	99-0971	1	Jet – Main (Std.) Note: 99-1041 Jet – Main (High Altitude)
124	99-0972	1	Screw – Shoulder
125	99-0973	1	Carburetor
●127		1	Plug – Welch (Sold in Kit Only).
130	99-0974	1	Valve – Throttle
131	99-0975	1	Shaft – Throttle
133	77-8170	1	Float – Carburetor
●134	77-8110	1	Valve – Needle
◆137		1	Gasket – Bowl (Sold in Kit Only).
◆163	99-0976	1	Gasket – Air Cleaner
◆634		1	Washer – Foam (Sold in Kit Only).
975	99-0977	1	Bowl – Float

Ref. No.	Part No.	Qty.	Description

● Included in Carburetor Kit—Part No. 99-0901. ◆ Included in Carburetor Gasket Set—Part No. 99-0902.
 ★ Included in Gasket Set—Part No. 99-0903. † Included in Valve Overhaul Gasket Set—Part No. 99-0904.



Assemblies include all parts shown in frames.

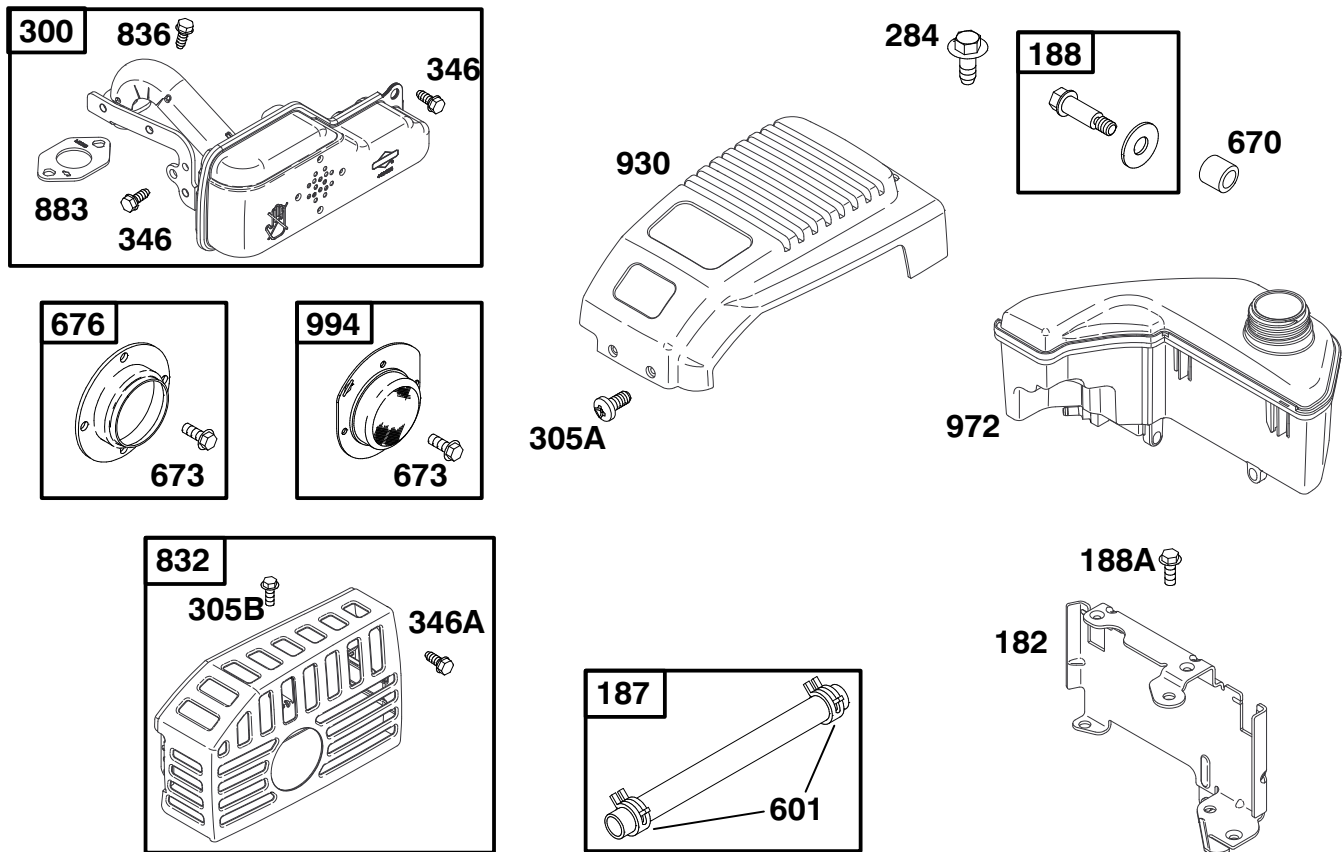
ENGINE GTS 200

Ref. No.	Part No.	Qty.	Description
51	99-0968	1	Gasket – Intake
51A	99-0978	1	Gasket – Intake
161	99-0979	1	Base – Air Cleaner/Primer
♦♦163	99-0976	1	Gasket – Air Cleaner
202	99-0981	1	Link – Governor
209	99-0982	1	Spring – Governor
258	99-0983	1	Screw – Hex.
259	99-0984	1	Grommet
445	98-9212	1	Filter – Air
467	98-9208	1	Knob
620	99-0985	1	Bracket – Control
621	99-0986	1	Switch – Stop
642	98-9207	1	Cover – Air Cleaner
922	99-0987	1	Spring – Brake
923	99-0988	1	Brake Assembly
967	99-0989	1	Filter – Air
971	99-0990	1	Screw – Hex.
976	99-0991	1	Primer – Carburetor

Ref. No.	Part No.	Qty.	Description

● Included in Carburetor Kit—Part No. 99-0901.
 ★ Included in Gasket Set—Part No. 99-0903.

◆ Included in Carburetor Gasket Set—Part No. 99-0902.



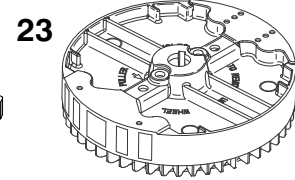
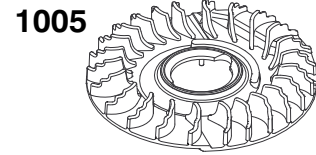
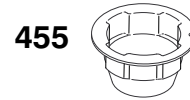
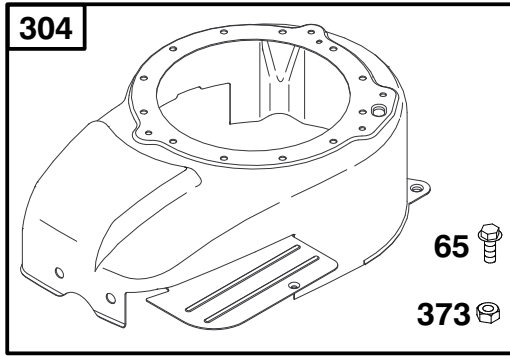
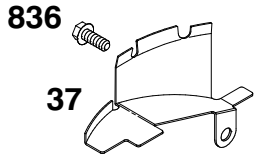
Assemblies include all parts shown in frames.

ENGINE GTS 200

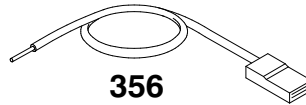
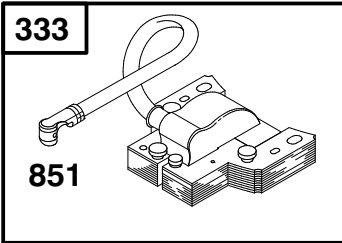
Ref. No.	Part No.	Qty.	Description	Ref. No.	Part No.	Qty.	Description
182	98-9205	1	Bracket – Tank Mounting				
187	99-0992	1	Line – Fuel (Cut to Required Length)				
188	99-0993	1	Screw – Shoulder				
188A	98-9202	1	Screw – Hex.				
284	99-0994	1	Screw – Hex.				
300	99-0995	1	Muffler – Exhaust				
305A	98-9204	1	Screw – Torx®				
305B	99-0998	1	Screw – Hex.				
346	99-1047	1	Screw – Hex.				
346A	99-0999	1	Screw – Hex.				
601	99-0996	1	Clamp – Hose				
670	99-0997	1	Spacer – Fuel Tank				
673	99-1043	1	Screw – Hex.				
676	99-1044	1	Deflector – Muffler				
832	98-9206	1	Guard – Muffler				
836	99-0941	1	Screw – Hex.				
†★883	99-0947	1	Gasket – Exhaust				
930	98-9203	1	Guard – Rewind				
972	99-1000	1	Tank – Fuel				
994	94-1681	1	Arrestor – Spark				

★ Included in Gasket Set – Part No. 99-0902.

† Included in Valve Overhaul Gasket Set – Part No. 99-0904.



363



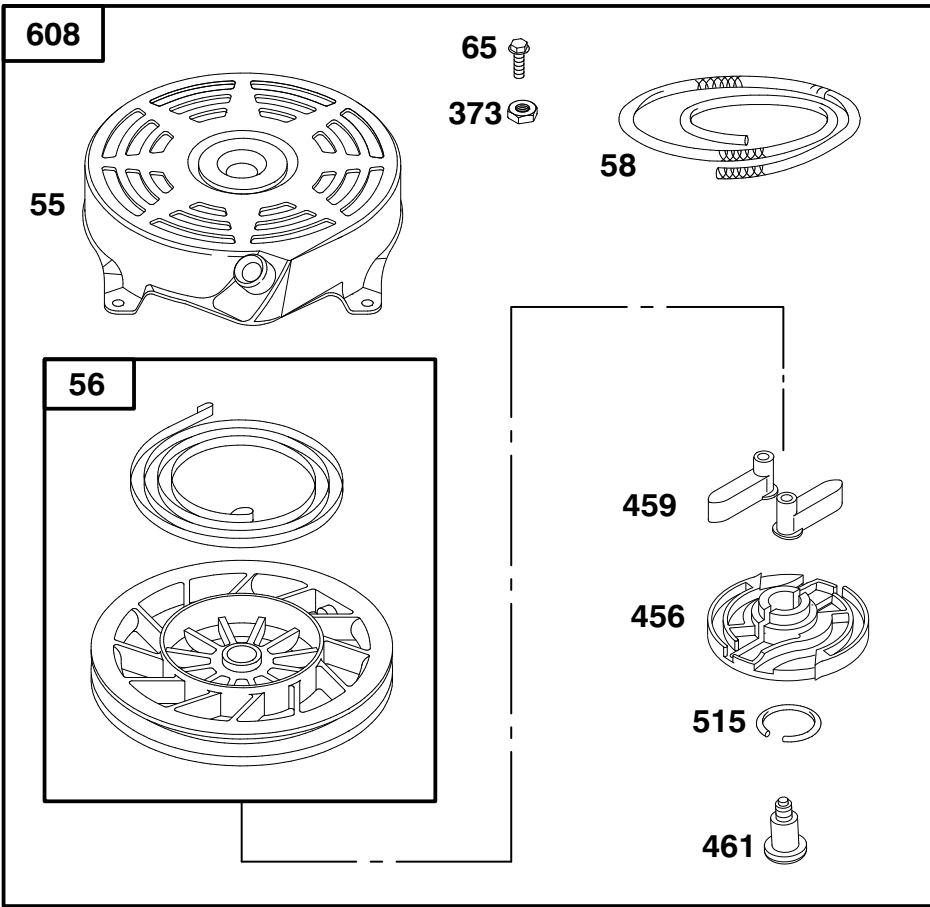
1036 LABEL KIT-EMISSION

Assemblies include all parts shown in frames.

ENGINE GTS 200

Ref. No.	Part No.	Qty.	Description
23	99-1001	1	Flywheel
37	99-0905	1	Guard - Flywheel
65	99-1002	1	Screw - Hex.
304	99-1003	1	Housing - Blower
332	99-1004	1	Nut - Flywheel
333	99-1005	1	Armature - Magneto
334	99-1006	1	Screw - Hex.
356	99-1007	1	Wire - Stop
363	99-1008	1	Puller - Flywheel
373	99-1009	1	Nut - Hex.
455	99-1010	1	Cup - Flywheel
836	99-0941	1	Screw - Hex.
851	77-9450	1	Terminal - Cable
1005	99-1015	1	Fan - Flywheel
1036	99-1016	1	Label Kit - Emission

Ref. No.	Part No.	Qty.	Description

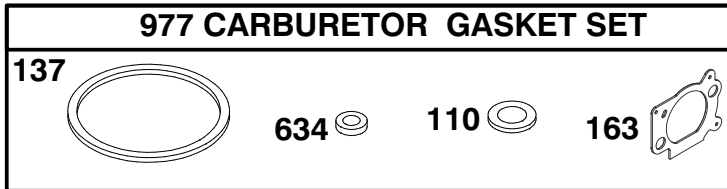
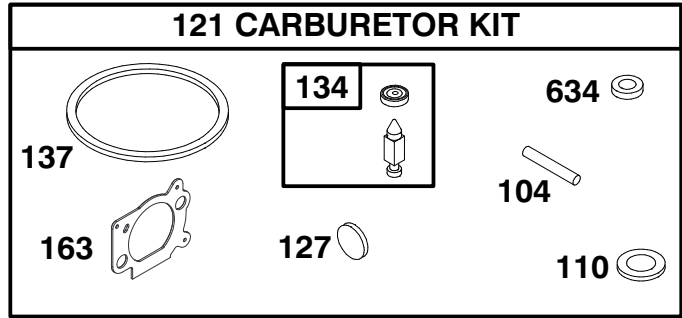
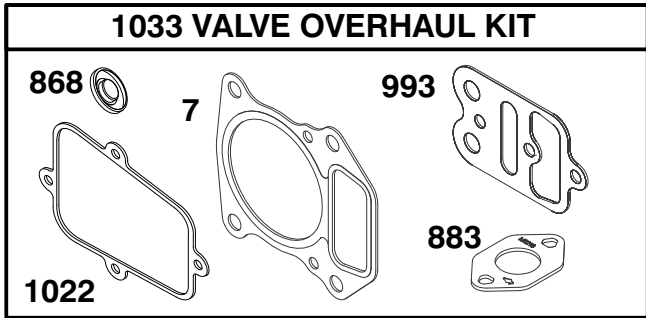
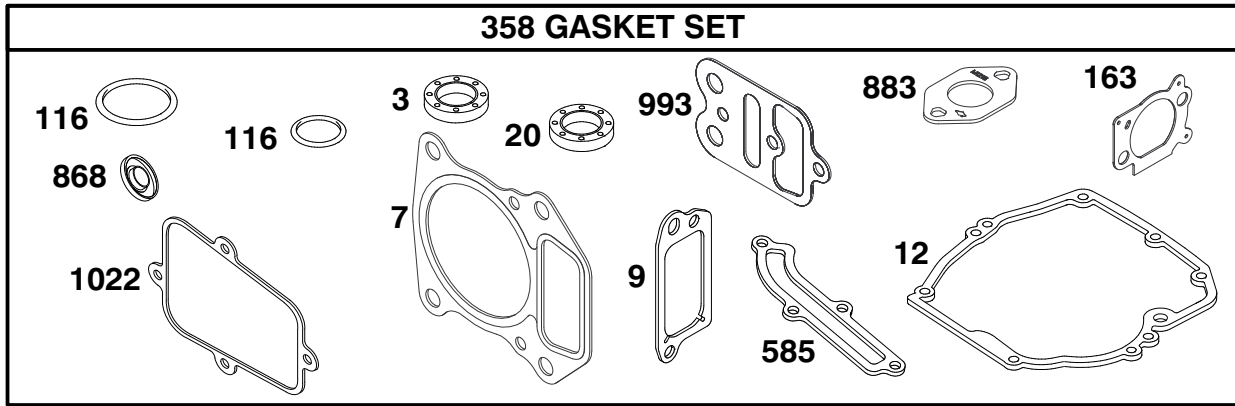


Assemblies include all parts shown in frames.

ENGINE GTS 200

Ref. No.	Part No.	Qty.	Description
55	99-1048	1	Housing – Rewind Starter
56	94-1657	1	Pulley – Starter
58	94-1668	1	Rope – Starter
59	77-7210	1	Insert – Starter Grip
60	77-8520	1	Grip – Starter Rope
65	99-1002	1	Screw – Hex.
373	99-1009	1	Nut – Hex.
456	94-1659	1	Retainer – Spring
459	94-1654	1	Pawl – Ratchet
461	94-1600	1	Screw – Shoulder
515	94-1655	1	Spring – Friction
608	98-9215	1	Starter – Rewind

Ref. No.	Part No.	Qty.	Description



Assemblies include all parts shown in frames.

ENGINE GTS 200

Ref. No.	Part No.	Qty.	Description
★3	99-0912	1	Seal – Oil
†★7	99-0930	1	Gasket – Cylinder Head
†★9	99-0913	1	Gasket – Breather
★12	99-0953	1	Gasket – Crankcase
★20	99-0955	1	Seal – Oil
●104	99-0970	1	Pin – Float Hinge
◆110		1	Washer – Bowl (Sold in Kit Only).
★116	99-0916	1	Seal – O Ring
121	99-0901	1	Carburetor Kit
●127		1	Plug – Welch (Sold in Kit Only).
●134	77-8110	1	Valve – Needle
◆137		1	Gasket – Bowl (Sold in Kit Only).
◆◆163	99-0971	1	Gasket – Air Cleaner
358	99-0902	1	Gasket Set
★585	99-0923	1	Gasket – Breather
◆◆634		1	Washer – Foam (Sold in Kit Only).
†★868	99-0946	1	Seal – Valve
†★883	99-0947	1	Gasket – Exhaust
977	99-0903	1	Gasket Set – Carburetor
†★993	99-6264	1	Gasket – Plate

Ref. No.	Part No.	Qty.	Description
†★1022	99-0907	1	Gasket – Rocker Cover
1033	99-0904	1	Gasket Set – Valve Overhaul

● Included in Carburetor Kit—Part No. 99-0901.

◆ Included in Carburetor Gasket Set—Part No. 99-0902.

★ Included in Gasket Set—Part No. 99-0903.

† Included in Valve Overhaul Gasket Set—Part No.99-0904.

Toro Part Number Index

Part No.	Page No.	Ref. No.	Qty.	Description
614578	5	10	1	Cover—Gear Case
614596	5	18	1	Gear 34 Tooth
614668	5	2	1	Cover—Gear Case
614696	5	4	1	Shaft—Intermediate
14-9959	4	2	2	Wheel—ASM
17-4319	2	23	1	Panel—Control
19-4050	2	29	2	Knob
26-0672	7	4	1	Bolt—Blade
27-6230	1	24	2	Bolt—Wheel
27-6230	4	1	2	Bolt—Wheel
27-6250	4	2:1	4	Bushing
27-6250	1	25:1	4	Bushing
36-4780	5	17	3	Washer—Thrust
36-4791	5	5	2	Washer
38-7820	5	15	1	Bearing—Ball
40-1940	1	26	2	Washer
46-1113	1	25	2	Wheel & Tire ASM
46-6290	1	39	1	O—Ring
46-6811	1	40	2	Screw—HWH
47-2890	4	19:3	1	Bushing
47-6730	4	19:4	1	Seal—Oil
48-2060	4	19:1	1	Bearing—Needle
49-2040	5	1	4	Screw—Taptite
55-3760	5	3	1	Pinion—15 Tooth
60-8750	5	6	2	Bushing
60-8850	5	9	2	Bushing—Output
60-8890	5	16	1	Gear—Bevel Pinion
62-6660	5	11	1	Spacer
62-7550	7	1	1	Pulley—Driver
63-8590	4	9	2	Screw
65-2720	4	30	4	Ring—Retaining
65-4710	4	27	2	Ring—Friction
65-4720	4	4	2	Spring—Compression
65-4740	4	5	4	Washer—Thrust
65-4750	4	29	2	Gear—Pinion
65-4760	4	28	2	Washer
65-5210	1	15	2	Screw—Tf
66-6040	4	7	1	Key—Locking RH
66-6050	4	6	1	Key—Rocking LH
71-7630	2	7	1	Cap—Throttle
71-7740	4	26	1	Spring
71-7770	4	20	2	Plate—Securing
71-7820	1	28	1	Pivot
71-7840	4	15	1	Rod—Trigger
71-7860	1	14	1	Grip—Upper
71-7870	1	19	1	Grip—Lower
71-7890	1	6	1	Guide—Belt
71-7900	1	11	1	Cap—Bolt LH
71-7910	1	16	1	Cap—Bolt RH
71-7920	1	22	1	Cover—Belt
71-7930	1	17	1	Trigger—HOC
71-7940	7	3	1	Retainer—Blade
71-7960	7	2	1	Guide—Belt Engine
71-7970	4	23	1	Rod—Link
71-7980	4	22	1	Indicator—HOC
71-7990	1	4	1	Ramp—Discharge
71-8040	2	12	1	Plate—Throttle
71-8060	4	11	2	Spring—Trigger
71-8080	4	10	1	Saddle—HOC
71-8090	2	31	1	Mount—Handle LH
71-8100	2	30	1	Mount—Handle RH
71-8130	2	25	1	Bracket—Control

*Not Illustrated

Toro Part Number Index (cont.)

Part No.	Page No.	Ref. No.	Qty.	Description
71-8310	2	1	1	Spring-Compression
71-8450	4	24	1	Cover-Spring
71-8580	1	8	2	Spacer-Door
71-8830	1	2	2	Retainer-ASM
71-8920	1	35	1	Kicker-Front
71-9230	1	36	1	Kicker-Rear
71-9250	1	32	1	Kicker-Rear
71-9260	7	7	1	Blade-Recycler
71-9440	1	33	1	Kicker-Front
71-9450	4	17	1	V Belt
71-9460	5	5	1	Bag-Grass
71-9470	5	3	1	Door-Bag
71-9480	5	2	1	Handle-Door
71-9600	5	*	1	Gear Case Ass'y Complete
71-9600	4	18	1	ASM-Gear Case
71-9620	5	7	1	Shaft-Output
71-9800	1	9	1	Door-Discharge
71-9840	1	10	2	Spring-Door
71-9863	2	22	1	Decal - Panel Ohv
71-9900	5	4	1	Frame
71-9610	5	12	2	Pulley-Half
71-9990	1	41	1	Plug-Recycler
74-1660	4	31	2	Cover-Wheel
74-1671	4	3	2	Spacer-Cover
80-0510-03	7	8	1	Stiffener-Blade
92-2289	6	3	1	Plate-Logo
92-7663	4	35	1	Cover-Wheel
92-7729	2	47	1	Anchor-Cable
92-7863	1	23	1	Decal-Deck
92-9677	4	16	1	Arm-Pivot LH
92-9680	4	19	1	Arm-Pivot RH
93-1116	2	41	1	Cable-Brake
93-4105	1	31	1	Decal-Danger
93-7198	6	1	1	ASM-Cap
93-8470	6	7	1	Screw-Clamp
94-4367	2	36	1	Handle-Sp
94-6026	2	46	1	Decal-Instruction
95-2740	4	34	1	Retainer-Belt
95-2747	1	38	1	Fitting-Washout
95-4450	3	1	1	Bail-Traction
95-4453	2	48	1	Screw-Handle
95-4454	3	2	1	Bail-Brake
95-4457	2	57	1	Rope-Guide
95-6134	1	5	1	Housing-Deck
95-9649	2	3	1	Cable-Traction
98-1509	2	17	1	Control-Throttle
98-2004	6	2	1	Decal-Engine
98-2008	5	9	1	Operator Manual
98-2039	4	18:1	1	Bracket - Traction
98-3247	2	8	1	Cover-Throttle
	6	4	1	Engine-Gts Ohv 200
2210-249	6	6	1	Clamp-Casing
2210-316	6	9	1	Rope-Stop
302-26	4	19:2	2	Fitting-Grease
322-29	1	12	2	Screw-HH
3253-22	7	5	1	Washer-Lock
3256-1	2	49	1	Washer-Flat
3256-24	5	13	1	Washer
3284-5	1	18	1	Pin-Groove
3290-378	2	2	1	Tie-Cable
3296-5	1	27	2	Nut-Lock
3296-5	4	13	2	Nut-Lock

*Not Illustrated

Toro Part Number Index (cont.)

Part No.	Page No.	Ref. No.	Qty.	Description
3296-5	5	14	1	Nut
3296-73	2	15	2	Nut-Lock
32112-11	1	3	1	Nut
32112-13	4	8	1	Nut-Push
32121-114	5	8	2	Pin-Groove
32144-4	1	1	10	Screw-TAP
32144-4	4	21	6	Screw-TAP
32144-4	7	6	2	Screw-TAP
32144-11	1	34	8	Screw-TAP
32144-31	4	12	1	Screw
32144-70	1	20	1	Screw-TAP
32144-97	1	13	2	Screw-PPH
32144-97	2	9	5	Screw-PPH
32144-98	2	11	4	Screw-PPH
32144-99	2	6	2	Screw-PPH
32144-102	6	8	3	Screw
32144-111	5	1	5	Screw - PPH
32151-93	4	25	1	Ring-Grip

MAINTENANCE RECORD

Date								