

# **LAWN-BOY®**

## **Silver Pro Series™ Walk-Behind Mower**

**Model No. 10323 – 9900001 & Up**

---

# **Parts Catalog**

## ORDERING REPLACEMENT PARTS

To order replacement parts, please supply: the part number, the quantity, and the description of each part desired.

## Contents

Description	Page	Description	Page
Housing Assembly .....	1	Engine Assembly (Continued) .....	7
Engine & Blade Assembly .....	2	Crankshaft Assembly .....	8
Rear Axle Assembly .....	3	Carburetor Assembly .....	9
Handle Assembly .....	4	Lawn-Boy Part Number Index .....	10-13
Gear Case Assembly .....	5		
Engine Assembly .....	6	<b>Note:</b>	

## Accessories

Description	Model / Parts No.	Description	Model / Parts No.
Side Bagging Kit .....	Model No. 89817	Leaf Shredder Kit .....	Model No. 89860
Leaf Bag .....	Model No. 89804	Leaf Bag Kit w/Chute .....	Model No. 89811

## Part Description Abbreviations

Part descriptions in this catalog may include the following abbreviations.

Abbreviation	Meaning	Abbreviation	Meaning
AR .....	as required	HWHTF .....	hex washer head thread forming
ASM .....	assembly	INC .....	incorporated
CARR .....	carriage	LH .....	left hand
DEG .....	degrees	PH .....	pan head
FH .....	flat head	PPH .....	Phillips pan head
GA .....	gauge	PTO .....	power take off
HF .....	hex flange	RH .....	right hand
HFW .....	hex flange washer	SFH .....	slotted fillister head
HH .....	hex head	SH .....	square head
HHF .....	hex head flange	SHWH .....	slotted hex washer head
HHST .....	hex head self tapping	SPH .....	slotted pan head
HJ .....	hex jam	STD .....	standard
HOC .....	height-of-cut	TAP .....	self tapping
HS .....	hex socket	TH .....	truss head
HSBH .....	hex socket button head	TTH .....	Torx truss head
HSFH .....	hex socket flat head	WH .....	wing head
HSH .....	hex socket head		
HWH .....	hex washer head		

## Important Format Explanations

This catalog uses special formats to convey information in illustrations and parts lists. Specifically, one format is used in conjunction with service assemblies and another with quantities associated with reference numbers.

## Service Assemblies

Parts within service assemblies have reference numbers in the form  $X:Y$ .  $X$  is the reference number of the service assembly and  $Y$  is a sequential number unique to each part within the service assembly.

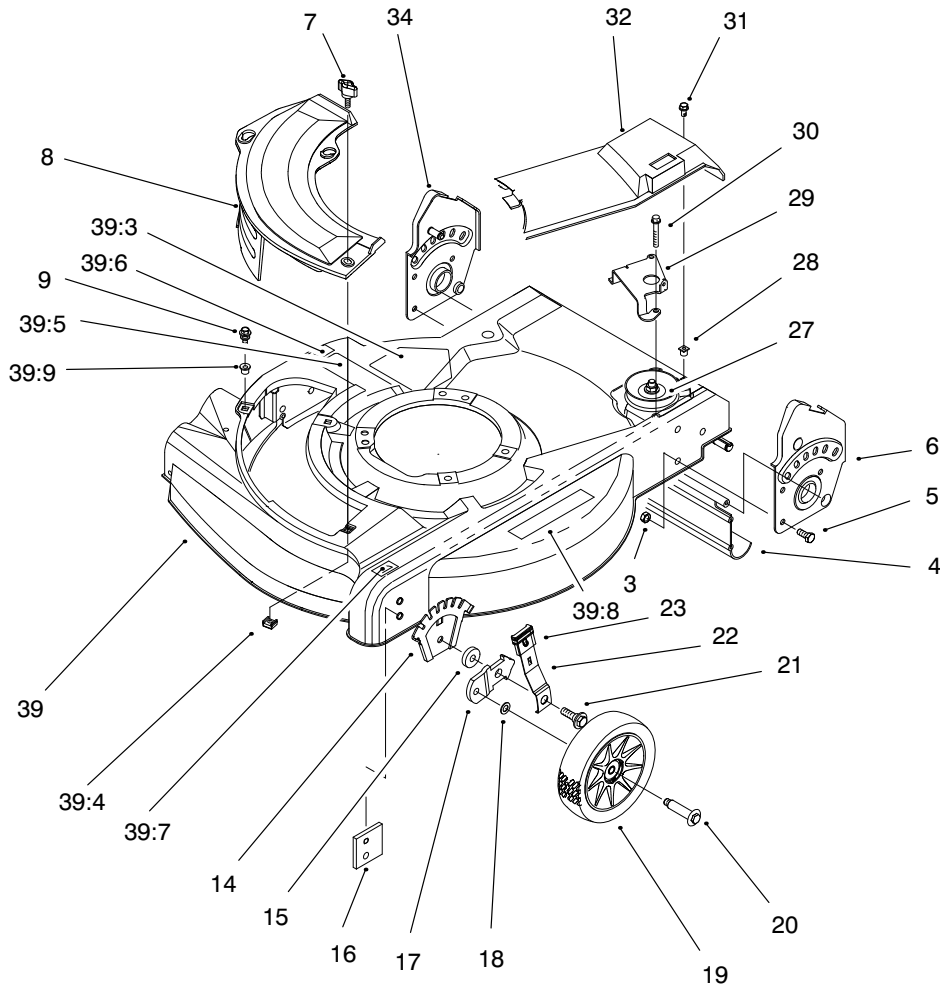
For example, a wheel assembly might be identified by reference number 6, the tire by 6:1, the valve by 6:2, and the wheel by 6:3. When you order the assembly identified by reference number 6, you receive all parts identified by reference numbers 6:1, 6:2, and 6:3. However, you may also order any part individually.

Reference numbers of this type appear in part lists and as callouts in illustrations.

## Reference Numbers with Quantities

Illustrations may have a quantity in parentheses next to a reference number, in the form  $X (Y)$ .  $X$  is the reference number.  $Y$  in parentheses is the quantity of the part identified by the reference number.

For example, the illustration callout 4 (2) indicates that two parts are used in that instance.

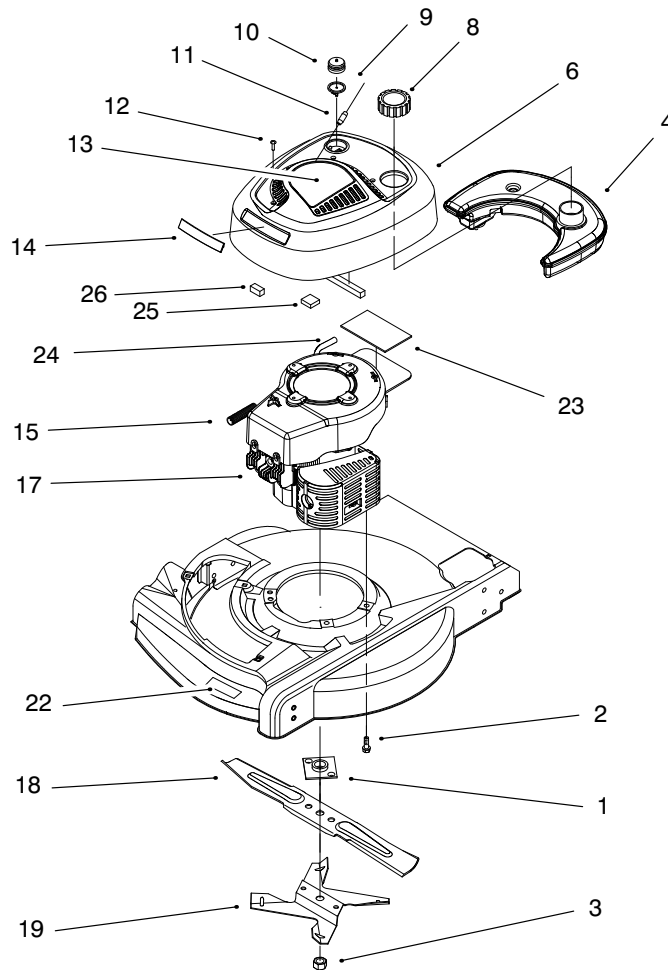


Sheet No.:2

## Housing Assembly

Ref. No.	Part No.	Qty.	Description
3	3296-29	6	Nut-Lock Ni
4	92-8647	1	Shield - Trailing
5	322-3	6	Screw-HH
6	92-7724	1	LH Handle Brkt ASM
7	98-8332	1	Knob
8	92-8630	1	Plate-Mulch
9	614677	2	Screw- Sems
14	92-4881-03	2	Plate - Hght Adj
15	92-4890	2	Washer - Wheel
16	92-7731	2	Plate - Baffle
17	95-7403-03	2	Bracket-Wheel Ht Adj
18	40-1940	2	Washer-Wheel Bolt
19	684776	2	6" Wheel & Tire ASM
20	92-1099	2	Bolt-Shoulder 6" Wheel
21	614672	2	Bolt-Shoulder
22	614687	2	Arm-Front Spring
23	92-1008	4	Knob-Height Adj Lever
27	95-7412	1	Assembly - Gear Case
28	605120	1	Grommet
29	95-1732-03	1	Guide-Transmission
30	65-5221	2	Screw-Thread Forming
31	92-9665	1	Screw-Pth

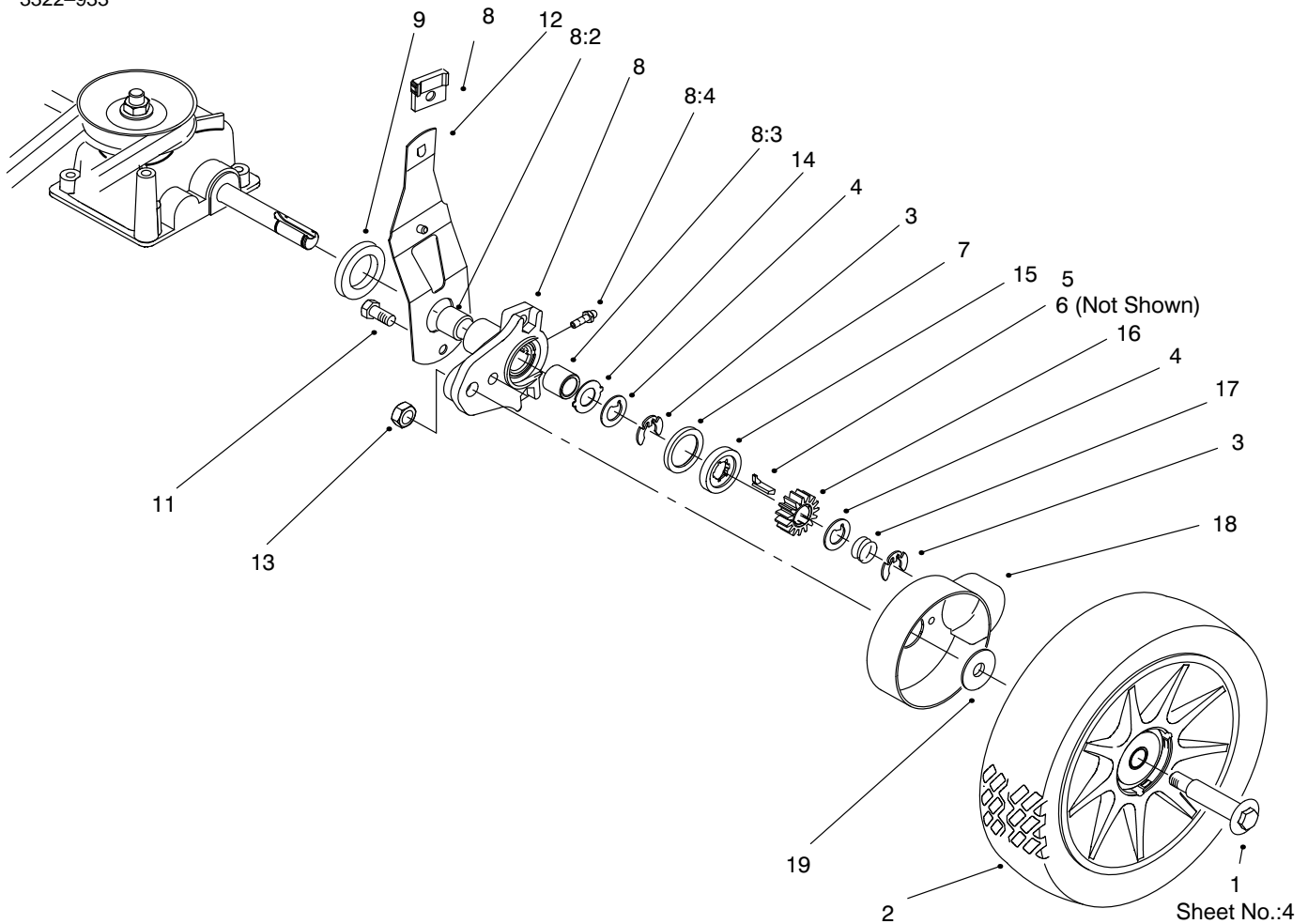
Ref. No.	Part No.	Qty.	Description
32	95-7413	1	Cover - Drive
34	92-7723	1	RH Handle Brkt ASM
39	98-4472	1	ASM - Housing/Baffle Sp
39:3	43-8480	1	Decal-Danger
39:4	613765	1	Nut-Cage
39:5	99-6018	1	Decal - Warning
39:6	92-2914	1	Decal - HOC R
39:7	92-2915	1	Decal - HOC L
39:8	93-7250	1	Decal-Instruction
39:9	94-1610	2	Grommet - Plastic
	95-7052	1	Plate - Chute Opening



Sheet No.:3

## Engine & Blade Assembly

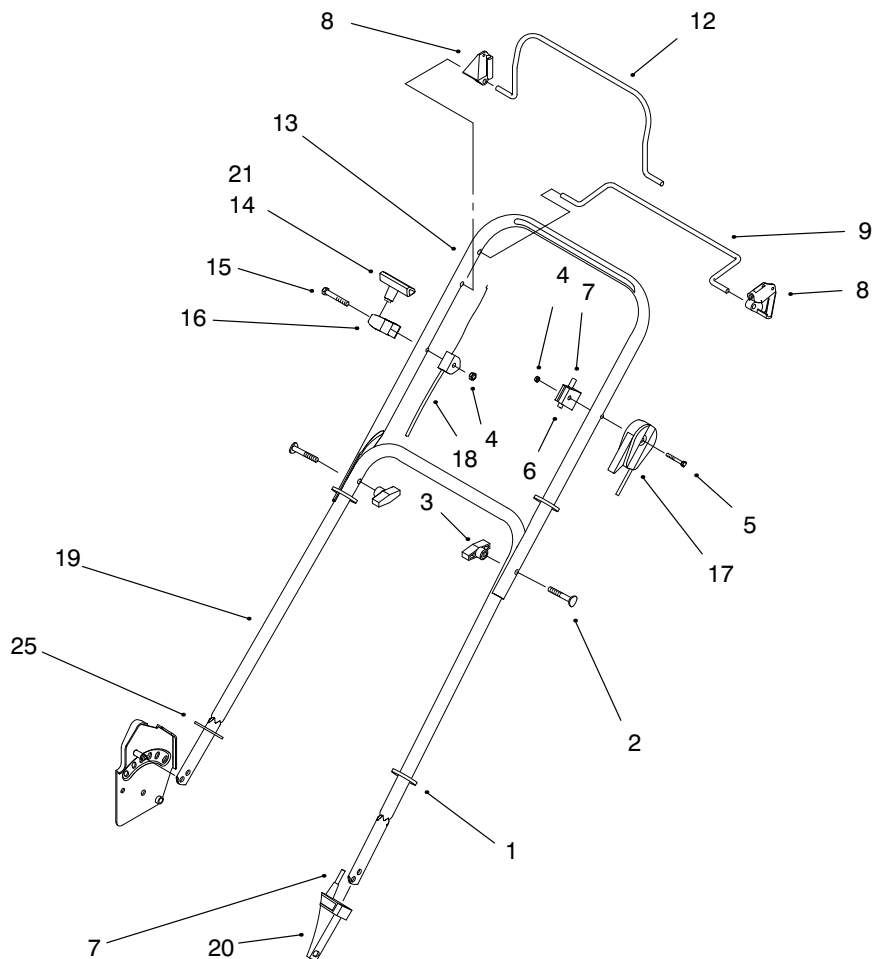
Ref. No.	Part No.	Qty.	Description	Ref. No.	Part No.	Qty.	Description
1	677525	1	Plate & Collar ASM				
2	611774	3	Screw-HH				
3	603164	1	Nut-Blade				
4	95-1897	1	Tank				
6	98-7033	1	ASM-Shroud/Recoil Cover				
8	98-8344	1	Assembly - Cap, Fuel/Oil				
9	66-7460	1	Bulb-Primer				
10	44-2750	1	Body-Primer				
12	95-7621	3	Screw-Pan Sems				
13	95-7417	1	Decal - Recoil				
14	92-8615	1	Applique-Shroud				
15	93-4306	1	Spring - Compression				
17		1	Engine Ay Sp E Silver				
18	612543	1	Blade-21" Whirl				
19	99-6351-03	1	Fan - Mulching				
20	314576	1	Screw-Sems				
21	306531	1	Nut-Hex S				
22	98-1567	1	Decal-Deck				
23	98-1386	1	Pad-Foam				
24	612782	1	Line-Gas				
25	99-1521	1	Strip-Foam				
26	99-1522	2	Strip-Foam				



## Rear Axle Assembly

Ref. No.	Part No.	Qty.	Description
1	92-1057	2	Bolt-Shoulder
2	92-1042	2	8" Wheel & Tire ASM.
3	65-2720	4	Klip Ring-Special
4	65-4740	4	Washer-Keyed Thrust
5	66-6050	1	Key-Rocking LH
6	66-6040	1	Key-Rocking
7	65-4710	2	Ring-Friction
8	92-7746	2	ASM-Hgt Adj Arm, Rear
8:1	302-56	1	Fitting-Zerk
8:2	47-2900	1	Bushing
8:3	70-9760	1	Bushing
9	614447	2	Spacer-Axle Shaft
11	32144-85	2	Screw-HH
12	92-1004	2	Spring Arm ASM - Rear
13	610358	2	Nut-Jam, Locking
14	65-4730	2	Washer-Pivot Arm
15	65-4760	2	Washer
16	65-4750	2	Pinion-Gear, 15t
17	65-4720	2	Spring-Compression
18	94-1609	2	Cover-Wheel
19	614426	2	Washer-Stepped

Ref. No.	Part No.	Qty.	Description

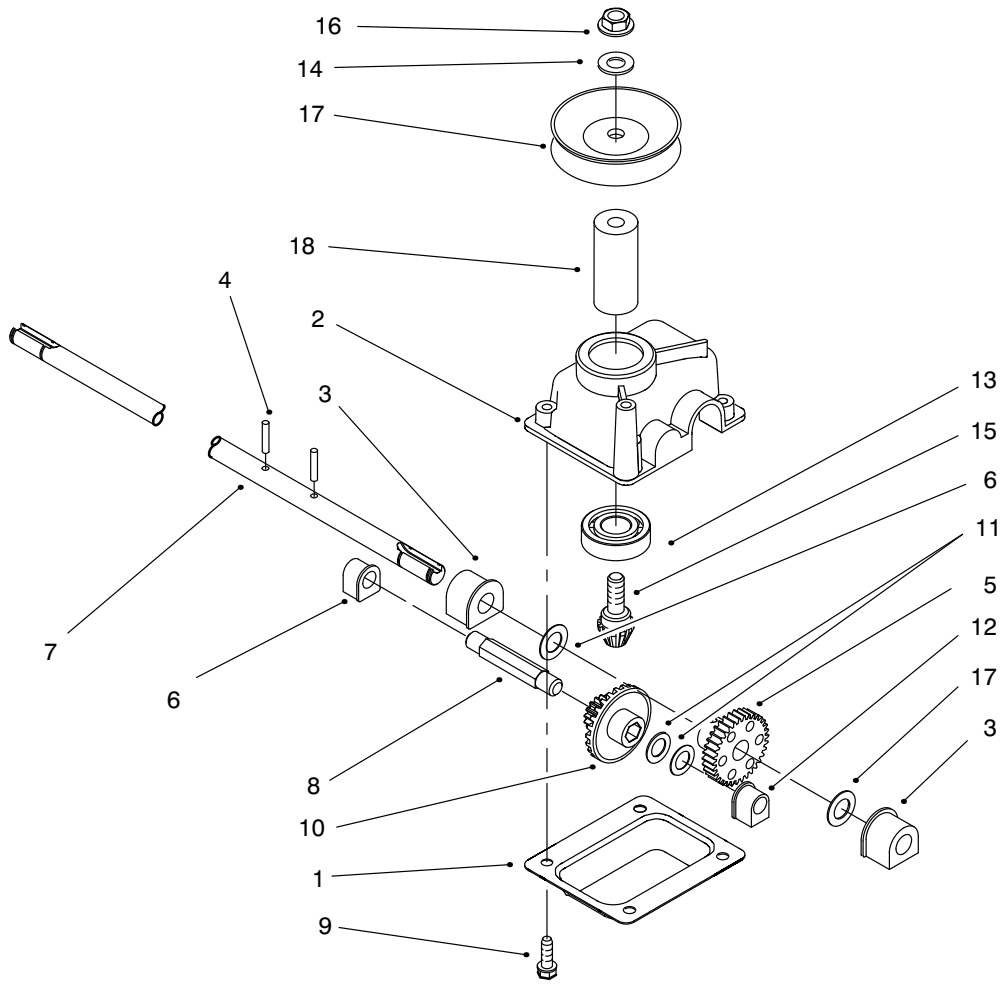


Sheet No.:5

### Handle Assembly

Ref. No.	Part No.	Qty.	Description
1	614249	3	Strap-Tie Sm
3	98-7134	2	Knob-Handle
4	3296-73	2	Nut-Lock Ni
5	321-49	1	Screw-Hex Hd
6	92-7729	1	Anchor-Upper Sp Cable
7	98-8328	1	Cable - Traction
8	92-5412	2	Stop-Pivot
9	92-1001-03	1	Bail-Sp Control
12	93-4184-03	1	Bail - Brake
13	95-1713-05	1	Handle - Upper
14	612825	1	Handle-Start Eat
15	321-50	1	Screw-HH
16	93-7383	1	Rope - Guide
17	95-7415	1	Cable - Throttle
18	92-7738	1	Cable - Flywheel Brake
19	614643-05	1	Section-Lower Handle
20	93-7380	1	Anchor - Cable
21	612824	1	Starter-Clip Eat
25	93-3653	1	Guard - Handle

Ref. No.	Part No.	Qty.	Description



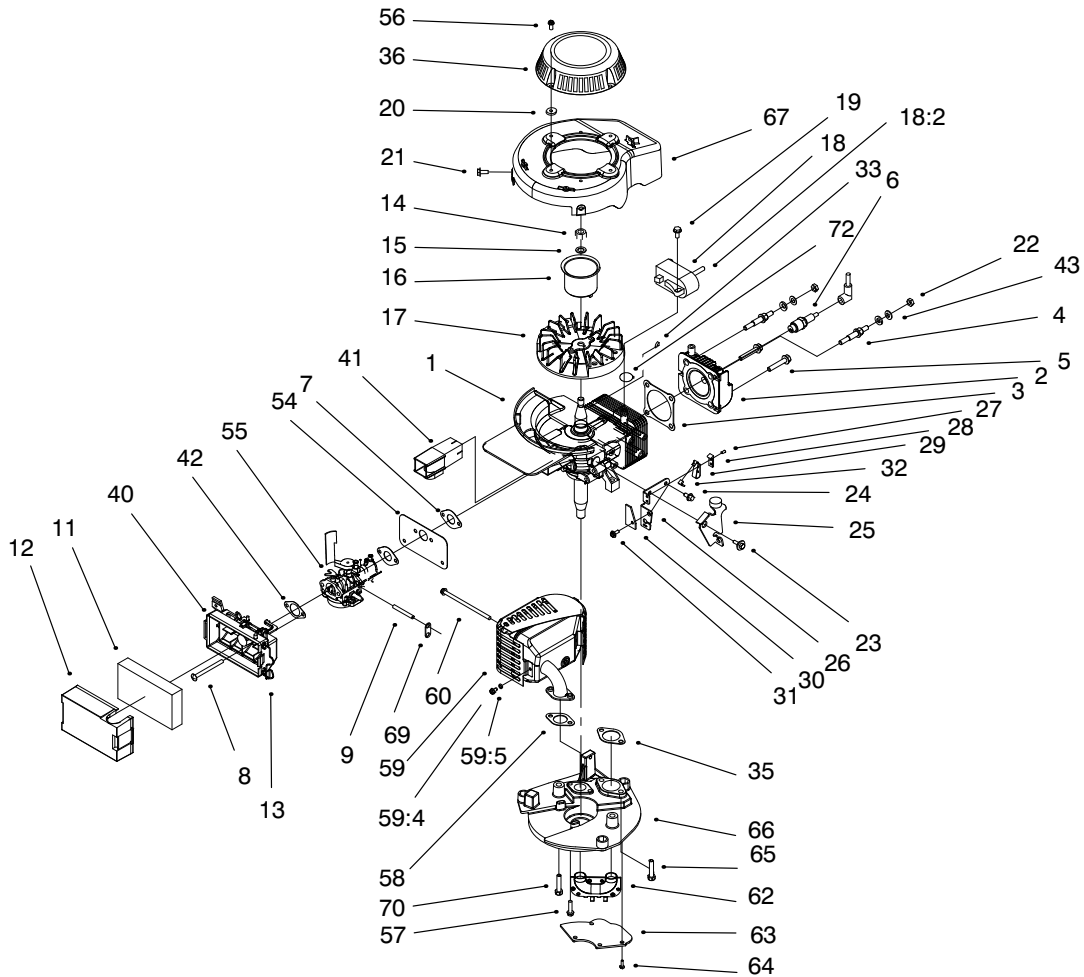
Sheet No.:300

## Gear Case Assembly

Ref. No.	Part No.	Qty.	Description
1	614668	1	Cover-Gear Case
2	92-7727	1	Gearcase-Upper Ss
3	60-8850	2	Bushing-Output
4	3285-19	2	Pin-Spirol
5	614596	1	Gear-34t
6	36-4780	2	Washer-Thrust
7	93-0239	1	Shaft-Output
8	614696	1	Shaft-Intermediate
9	32144-4	4	Screw-TAP
10	55-3760	1	15 T Pinion
11	36-4791	2	Washer-Thrust
12	60-8750	2	Bushing
13	38-7820	1	Bearing-Ball
14	3256-24	1	Washer-Flat
15	95-1731	1	Gear-Pinion
16	3296-5	1	Nut-Lock
17	614669	2	Pulley-Half
18	95-5550	1	Spacer-pulley

Ref. No.	Part No.	Qty.	Description



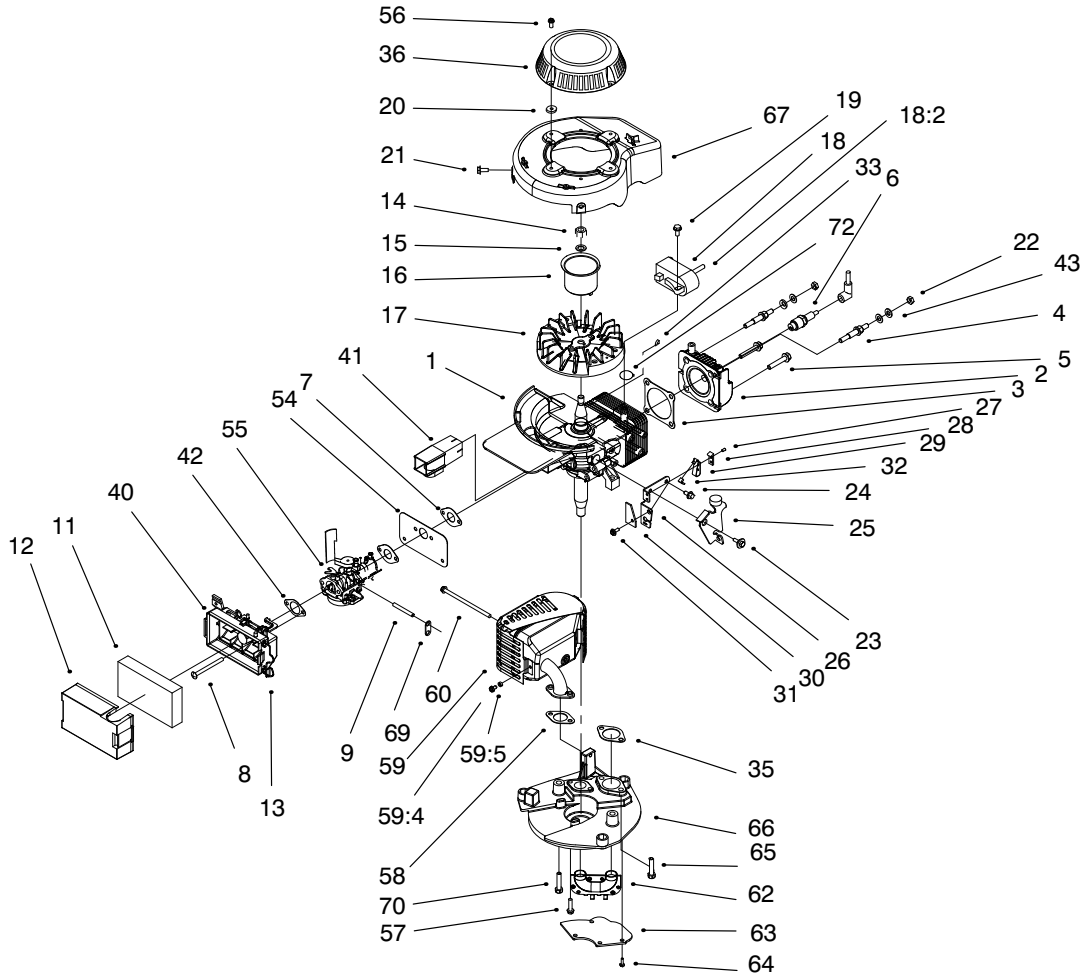


Sheet No.:A3

## Engine Assembly

Ref. No.	Part No.	Qty.	Description
1	95-7636	1	E-S/Block Ser.
2	94-5776	1	Head-(Mach)
3	94-5778	1	Gasket-Head
4	94-5779	2	Stud
5	94-5780	2	Bolt - Head
6	50-1170	1	Plug-Spark
7	94-5795	2	Gasket-Intake
8	612507	2	Screw
9	44-3170	1	Primer Hose
11	95-5574	1	Filter-Air
12	95-5577	1	Cover-Air Filter
13	610383	1	Retainer-Fil.
14	130743	1	Nut
15	316959	1	Washer-Lock
16	612949	1	Hub Starter
17	95-1866	1	Flywheel-Machined
18	92-1152	1	Ignition-Cd
18:2	681678	1	Ht Lead&cover
18:2	684698	1	Cover & Term. Ay
19	613208	2	Screw-Cd Mtg
20	98-4478	4	Spacer
21	700094	2	Screw-HH
22	146501	2	Nut
23	95-1870	1	Screw-Shoulder
24	95-1871	1	Screw-HWH
25	93-4312	1	Brake Plate Ay

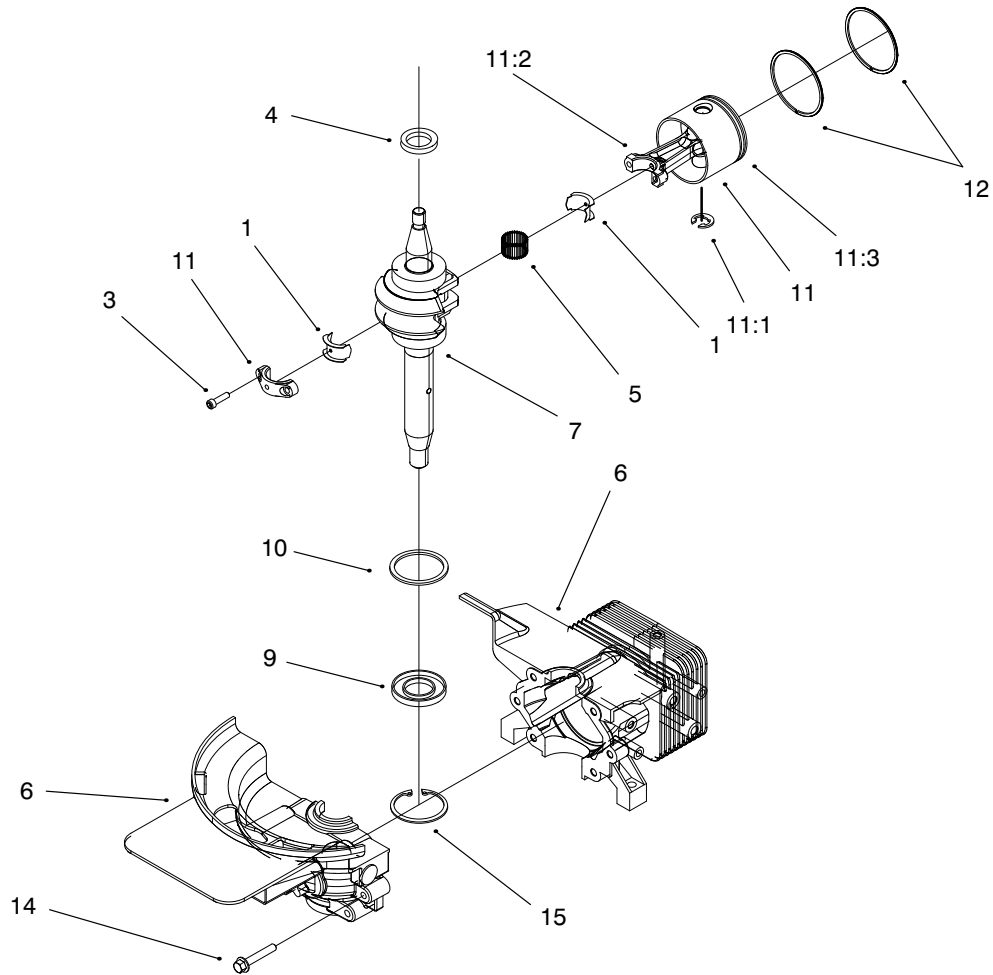
Ref. No.	Part No.	Qty.	Description
26	84-7820	1	Plate-Brake Mtg
27	3290-459	2	Rivet-Plastic
28	92-2925	1	Strap-Insulation
29	60-9010	1	Strap-Ground
30	53-4690	1	Stop-Gr Strap
31	12-5450	1	Screw-Special
32	98-7037	1	Wire - Lead
33	607199	1	Key
35	95-1778	1	Gasket-Exhaust
36	100-2908	1	Starter Assy Sm
40	95-5588	1	Base Ay-(Air Filter)
41	95-5578	1	Tunnel
42	95-7613	1	Gasket-Filter
43	3290-456	4	Washer-Belleville
54	98-1388	1	Shield - Carb.
55	98-7042	1	Carburetor ASM With Gaskets
56	98-4484	4	Screw Sems
57	613208	2	Screw-Cd Mtg
58	98-1392	1	Gasket
59	99-2904	1	Muffler And Guard ASM
59:4	98-1394	2	Screw-HWH
59:5	3254-1	2	Washer-Lock/Int
60	611228	1	Bolt-Console
62	98-1557	1	Pipe-Transfer



Sheet No.:A3

# Engine Assembly

Ref. No.	Part No.	Qty.	Description	Ref. No.	Part No.	Qty.	Description
63	98-1591	1	Cover-Muffler				
64	700822	4	Screw-HH				
65	322-17	2	Screw-HH				
66	98-1383	1	Mtg. Plate				
67	98-4467	1	Assembly - Shroud				
69	95-7615	1	Hose-Retainer				
70	613233	2	Screw H.hd.wash				
72	317893	1	Strap-Tie				

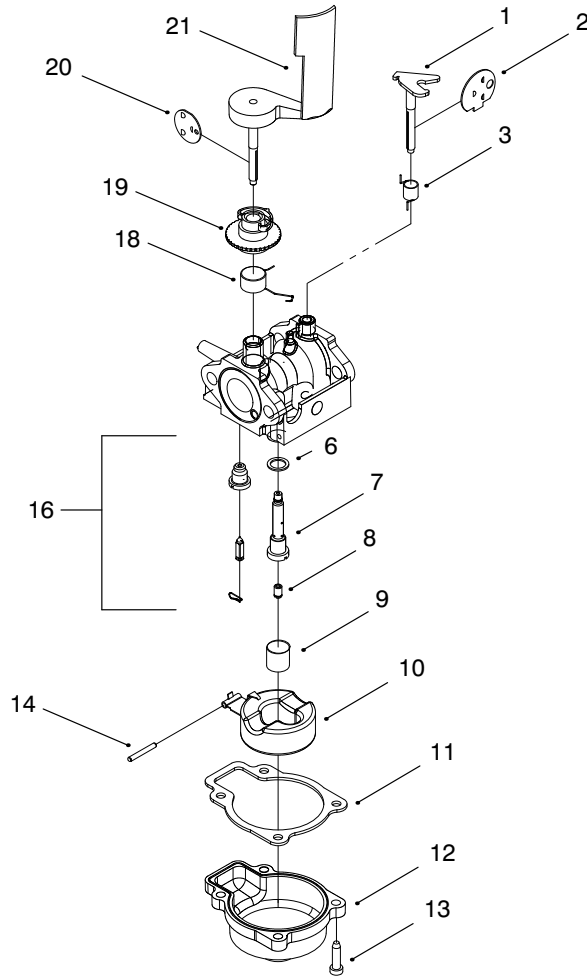


Sheet No.:A5

## Short Block Assembly

Ref. No.	Part No.	Qty.	Description	Ref. No.	Part No.	Qty.	Description
1	677982	1	Liner Ay				
†2	610372	2	Sealer-Loctite				
†2	609790	2	Sealant-50cc #2				
3	611393	4	Screw-Rod				
4	611396	1	Seal- Oil				
5	683911	1	Bearing-Needle				
6	95-7631	1	Cylinder And Crankcase ASM				
7	99-2920	1	Crankshaft And Bearing ASM For Service				
9	94-5764	1	Seal-Oil				
10	94-5765	1	Ring-Retaining				
11		1	Piston&rod Ay				
11:1	303712	2	Ring- Retaining				
11:2	95-7629	1	Connecting Rod ASM				
11:3	95-7628	1	Piston ASM With Piston Rings				
12	95-7626	1	Ring Set - Service				
14	94-5781	12	Screw				
15	98-7046	1	Ring - Retaining				

† Not Illustrated



Sheet No.:A6

## Carburetor Assembly

Ref. No.	Part No.	Qty.	Description
1	95-5581	1	Shaft-Choke
2	94-5788	1	Disc - Choke
3	95-5583	1	Spring-Choke
6	612383	1	Washer
7	98-7001	1	Nozzle
8	98-1357	1	Jet - Main 77.5
9	94-5787	1	Filter - Fuel
10	95-1899	1	Float&arm Ay
11	98-1362	1	Gasket
12	92-9691	1	Chamber-Float
13	608850	4	Screw-HH
14	92-6389	1	Pin
16	92-9697	1	Val/Seat-Float
18	98-7011	1	Spring-Gov.
19	610834	1	Airvane-Collar
20	98-7047	1	Disc-Throttle
21	92-6376	1	Air Vane&shaft

Ref. No.	Part No.	Qty.	Description

# Lawn-Boy Part Number Index

Part No.	Page No.	Ref. No.	Qty.	Description
130743	6	14	1	Nut
146501	6	22	2	Nut
303712	8	11:1	2	Ring- Retaining
306531	2	21	1	Nut-Hex S
314576	2	20	1	Screw-Sems
316959	6	15	1	Washer-Lock
317893	7	72	1	Strap-Tie
603164	2	3	1	Nut-Blade
605120	1	28	1	Grommet
607199	6	33	1	Key
608850	9	13	4	Screw-HH
609790	8	2	2	Sealant-50cc #2
610358	3	13	2	Nut-Jam, Locking
610372	8	2	2	Sealer-Loctite
610383	6	13	1	Retainer-Fil.
610834	9	19	1	Airvane-Collar
611228	6	60	1	Bolt-Console
611393	8	3	4	Screw-Rod
611396	8	4	1	Seal- Oil
611774	2	2	3	Screw-HH
612383	9	6	1	Washer
612507	6	8	2	Screw
612543	2	18	1	Blade-21" Whirl
612782	2	24	1	Line-Gas
612824	4	21	1	Starter-Clip Eat
612825	4	14	1	Handle-Start Eat
612949	6	16	1	Hub Starter
613208	6	19	2	Screw-Cd Mtg
613208	6	57	2	Screw-Cd Mtg
613233	7	70	2	Screw H.hd.wash
613765	1	39:4	1	Nut-Cage
614249	4	1	3	Strap-Tie Sm
614426	3	19	2	Washer-Stepped
614447	3	9	2	Spacer-Axle Shaft
614596	5	5	1	Gear-34t
614668	5	1	1	Cover-Gear Case
614669	5	17	2	Pulley-Half
614672	1	21	2	Bolt-Shoulder
614677	1	9	2	Screw- Sems
614687	1	22	2	Arm-Front Spring
614696	5	8	1	Shaft-Intermediate
677525	2	1	1	Plate & Collar ASM
677982	8	1	1	Liner Ay
681678	6	18:2	1	Ht Lead&cover
683911	8	5	1	Bearing-Needle
684698	6	18:2	1	Cover & Term. Ay
684776	1	19	2	6" Wheel & Tire ASM
700094	6	21	2	Screw-HH
700822	7	64	4	Screw-HH
12-5450	6	31	1	Screw-Special
36-4780	5	6	2	Washer-Thrust
36-4791	5	11	2	Washer-Thrust
38-7820	5	13	1	Bearing-Ball
40-1940	1	18	2	Washer-Wheel Bolt
43-8480	1	39:3	1	Decal-Danger
44-2750	2	10	1	Body-Primer
44-3170	6	9	1	Primer Hose
47-2900	3	8:2	1	Bushing
50-1170	6	6	1	Plug-Spark
53-4690	6	30	1	Stop-Gr Strap
55-3760	5	10	1	15 T Pinion
60-8750	5	12	2	Bushing

\*Not Illustrated

# Lawn-Boy Part Number Index (cont.)

Part No.	Page No.	Ref. No.	Qty.	Description
60-8850	5	3	2	Bushing-Output
60-9010	6	29	1	Strap-Ground
65-2720	3	3	4	Klip Ring-Special
65-4710	3	7	2	Ring-Friction
65-4720	3	17	2	Spring-Compression
65-4730	3	14	2	Washer-Pivot Arm
65-4740	3	4	4	Washer-Keyed Thrust
65-4750	3	16	2	Pinion-Gear, 15t
65-4760	3	15	2	Washer
65-5221	1	30	2	Screw-Thread Forming
66-6040	3	6	1	Key-Rocking
66-6050	3	5	1	Key-Rocking LH
66-7460	2	9	1	Bulb-Primer
70-9760	3	8:3	1	Bushing
84-7820	6	26	1	Plate-Brake Mtg
92-1001-03	4	9	1	Bail-Sp Control
92-1004	3	12	2	Spring Arm ASM - Rear
92-1008	1	23	4	Knob-Height Adj Lever
92-1042	3	2	2	8" Wheel & Tire ASM.
92-1057	3	1	2	Bolt-Shoulder
92-1099	1	20	2	Bolt-Shoulder 6" Wheel
92-1152	6	18	1	Ignition-Cd
92-2914	1	39:6	1	Decal - HOC R
92-2915	1	39:7	1	Decal - HOC L
92-2925	6	28	1	Strap-Insulation
92-4881-03	1	14	2	Plate - Hght Adj
92-4890	1	15	2	Washer - Wheel
92-5412	4	8	2	Stop-Pivot
92-6376	9	21	1	Air Vane&shaft
92-6389	9	14	1	Pin
92-7723	1	34	1	RH Handle Brkt ASM
92-7724	1	6	1	LH Handle Brkt ASM
92-7727	5	2	1	Gearcase-Upper Ss
92-7729	4	6	1	Anchor-Upper Sp Cable
92-7731	1	16	2	Plate - Baffle
92-7738	4	18	1	Cable - Flywheel Brake
92-7746	3	8	2	ASM-Hgt Adj Arm, Rear
92-8615	2	14	1	Applique-Shroud
92-8630	1	8	1	Plate-Mulch
92-8647	1	4	1	Shield - Trailing
92-9665	1	31	1	Screw-Pth
92-9691	9	12	1	Chamber-Float
92-9697	9	16	1	Val/Seat-Float
93-0239	5	7	1	Shaft-Output
93-3653	4	25	1	Guard - Handle
93-4184-03	4	12	1	Bail - Brake
93-4306	2	15	1	Spring - Compression
93-4312	6	25	1	Brake Plate Ay
93-7250	1	39:8	1	Decal-Instruction
93-7380	4	20	1	Anchor - Cable
93-7383	4	16	1	Rope - Guide
94-1609	3	18	2	Cover-Wheel
94-1610	1	39:9	2	Grommet - Plastic
94-5764	8	9	1	Seal-Oil
94-5765	8	10	1	Ring-Retaining
94-5776	6	2	1	Head-(Mach)
94-5778	6	3	1	Gasket-Head
94-5779	6	4	2	Stud
94-5780	6	5	2	Bolt - Head
94-5781	8	14	12	Screw
94-5787	9	9	1	Filter - Fuel
94-5788	9	2	1	Disc - Choke

\*Not Illustrated

# Lawn-Boy Part Number Index (cont.)

Part No.	Page No.	Ref. No.	Qty.	Description
94-5795	6	7	2	Gasket-Intake
95-1713-05	4	13	1	Handle - Upper
95-1731	5	15	1	Gear-Pinion
95-1732-03	1	29	1	Guide-Transmission
95-1778	6	35	1	Gasket-Exhaust
95-1866	6	17	1	Flywheel-Machined
95-1870	6	23	1	Screw-Shoulder
95-1871	6	24	1	Screw-HWH
95-1897	2	4	1	Tank
95-1899	9	10	1	Float&arm Ay
95-5550	5	18	1	Spacer-pulley
95-5574	6	11	1	Filter-Air
95-5577	6	12	1	Cover-Air Filter
95-5578	6	41	1	Tunnel
95-5581	9	1	1	Shaft-Choke
95-5583	9	3	1	Spring-Choke
95-5588	6	40	1	Base Ay-(Air Filter)
95-7052	1		1	Plate - Chute Opening
95-7403-03	1	17	2	Bracket-Wheel Ht Adj
95-7412	1	27	1	Assembly - Gear Case
95-7413	1	32	1	Cover - Drive
95-7415	4	17	1	Cable - Throttle
95-7417	2	13	1	Decal - Recoil
95-7613	6	42	1	Gasket-Filter
95-7615	7	69	1	Hose-Retainer
95-7621	2	12	3	Screw-Pan Sems
95-7626	8	12	1	Ring Set - Service
95-7628	8	11:3	1	Piston ASM With Piston Rings
95-7629	8	11:2	1	Connecting Rod ASM
95-7631	8	6	1	Cylinder And Crankcase ASM
95-7636	6	1	1	E-S/Block Ser.
98-1357	9	8	1	Jet - Main 77.5
98-1362	9	11	1	Gasket
98-1383	7	66	1	Mtg. Plate
98-1386	2	23	1	Pad-Foam
98-1388	6	54	1	Shield - Carb.
98-1392	6	58	1	Gasket
98-1394	6	59:4	2	Screw-HWH
98-1557	6	62	1	Pipe-Transfer
98-1567	2	22	1	Decal-Deck
98-1591	7	63	1	Cover-Muffler
98-4467	7	67	1	Assembly - Shroud
98-4472	1	39	1	ASM - Housing/Baffle Sp
98-4478	6	20	4	Spacer
98-4484	6	56	4	Screw Sems
98-7001	9	7	1	Nozzle
98-7011	9	18	1	Spring-Gov.
98-7033	2	6	1	ASM-Shroud/Recoil Cover
98-7037	6	32	1	Wire - Lead
98-7042	6	55	1	Carburetor ASM With Gaskets
98-7046	8	15	1	Ring - Retaining
98-7047	9	20	1	Disc-Throttle
98-7134	4	3	2	Knob-Handle
98-8328	4	7	1	Cable - Traction
98-8332	1	7	1	Knob
98-8344	2	8	1	Assembly - Cap, Fuel/Oil
99-1521	2	25	1	Strip-Foam
99-1522	2	26	2	Strip-Foam
99-2904	6	59	1	Muffler And Guard ASM
99-2920	8	7	1	Crankshaft And Bearing ASM For Service
99-6018	1	39:5	1	Decal - Warning
99-6351-03	2	19	1	Fan - Mulching

\*Not Illustrated

# Lawn-Boy Part Number Index (cont.)

Part No.	Page No.	Ref. No.	Qty.	Description
100-2908	6	36	1	Starter Assy Sm
302-56	3	8:1	1	Fitting-Zerk
321-49	4	5	1	Screw-Hex Hd
321-50	4	15	1	Screw-HH
322-3	1	5	6	Screw-HH
322-17	7	65	2	Screw-HH
3254-1	6	59:5	2	Washer-Lock/Int
3256-24	5	14	1	Washer-Flat
3285-19	5	4	2	Pin-Spirol
3290-456	6	43	4	Washer-Belleville
3290-459	6	27	2	Rivet-Plastic
3296-5	5	16	1	Nut-Lock
3296-29	1	3	6	Nut-Lock Ni
3296-73	4	4	2	Nut-Lock Ni
32144-4	5	9	4	Screw-TAP
32144-85	3	11	2	Screw-HH
614643-05	4	19	1	Section-Lower Handle