



Count on it.

Parts Catalog

Versa Vac

Model No. 07053—Serial No. 403360001 and Up



Ordering Replacement Parts

To order replacement parts, please supply the part number, the quantity, and the description of each part desired.

Understanding Reference Numbers

Each identified part in an illustration has a reference number. The reference number for a part also appears in the parts list, along with other information about the part.

This catalog uses two special reference number formats, one to indicate parts in a service assembly and another to indicate the quantity of a given part in an illustration.

Service Assembly Reference Numbers

Parts in service assemblies have reference numbers in the form a:b. The a represents the reference number of the entire service assembly and the b represents a sequential number unique to each part within the service assembly.

For example, a wheel assembly might be identified by reference number 6, the tire by 6:1, the valve by 6:2, and the wheel by 6:3. When you order the assembly identified by reference number 6, you receive all parts identified by reference numbers 6:1, 6:2, and 6:3. However, you may also order any part individually. Reference numbers of this type appear in illustration and in parts lists.

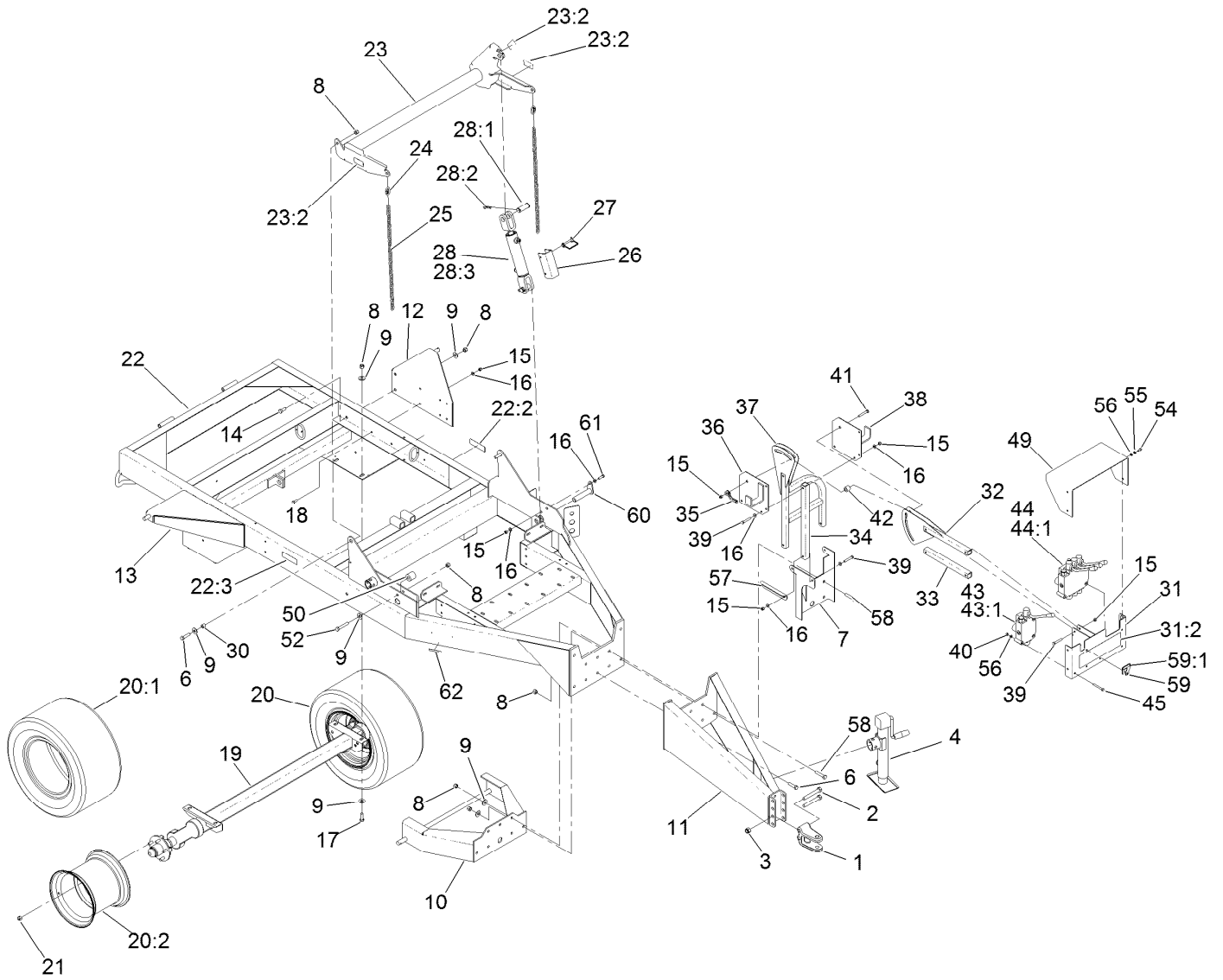
Reference Numbers Indicating Quantity

In an illustration, if a reference number indicates more than one part, the reference number has the form nX y. The n represents the quantity of the part, the X is the multiplication symbol, and the y represents the reference number.

For example, in an illustration, the reference number 2X 37 means that two of the parts identified by reference number 37 are indicated.

Contents

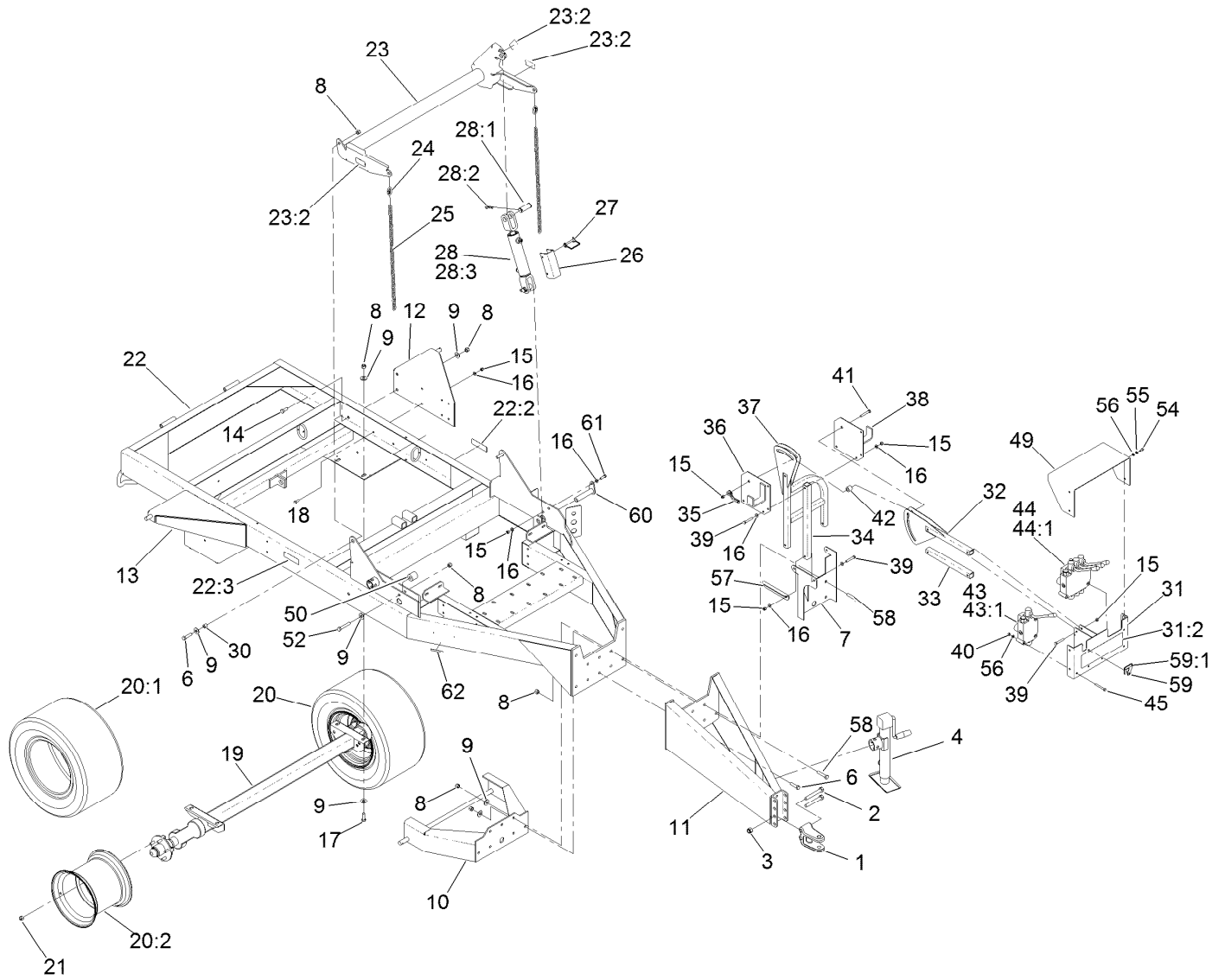
Frame and Axle Assembly	4
Axle and Hub Assembly No. SVP20000.....	6
Impeller Assembly	7
Drive Assembly.....	8
Hydraulic Double Gear Pump Assembly No. 108-0856	10
Power-Take-Off Shaft and Shield Assembly	11
Double Power-Take-Off Shaft Assembly No. SVA10500	12
Sidewall Assembly	13
Left Hand Sidewall Assembly	14
Right Hand Sidewall Assembly	15
Door Assembly	16
Lower Link Door Assembly	17
Cylinder Assembly	18
Hydraulic Cylinder Assembly No. 107-1360	19
Hydraulic Assembly	20
Lift Hydraulic Assembly	21
Hydraulic Fitting Assembly	22
Attachments and Accessories	23



Frame and Axle Assembly

Ref.	Part Number	Qty.	Description	Ref.	Part Number	Qty.	Description
1	131-4381-01	1	Hitch-Clevis	20	137-6605	2	Tire And Wheel ASM
2	327-23	2	Screw-HH	20:1	137-6606	1	Tire 4-Ply
3	3296-53	2	Nut-Lock, NI	20:2	137-6604	1	Rim
4	T0000-3423	1	Jack-Sidewind	21	242-50	10	Nut-Lug
6	325-8	5	Screw-HH	22	106-0189	1	Frame
7	SVA17500-03	1	Base-Stand	22:2	106-0167	1	Decal-Caution
8	3296-23	20	Nut-Lock, NI	22:3	106-0162	2	Decal-Caution, Stay Clear (CE)
9	3256-6	23	Washer-Flat	23	106-0190	1	Arm-Lift
10	SVA11200-03	1	Mount-Deck	23:2	93-6674	3	Decal-Warning
11	SV198-00-03	1	Hitch	24	CSP15000	2	Link-Quick
12	SVA11300-03	1	Bracket-Door, Left	25	SV139-00	2	Chain-Link
13	SVA11400-03	1	Bracket-Door, Right	26	SV158-00-03	1	Channel-Lock
14	325-5	4	Screw-HH	27	PF244-00	2	Pin-Wire, Lock
15	3296-39	19	Nut-Lock, NI	28	107-1180	1	Cylinder-HYD
16	3256-24	28	Washer-Flat	28:1	107-1182	2	Pin-Clevis
17	325-6	4	Screw-HH	28:2	9335064	2	Pin-Cotter, Hair
18	323-6	8	Screw-HH	28:3	107-1183	1	Seal Kit ●
19	SVP20000	1	Axle And Hub ASM				

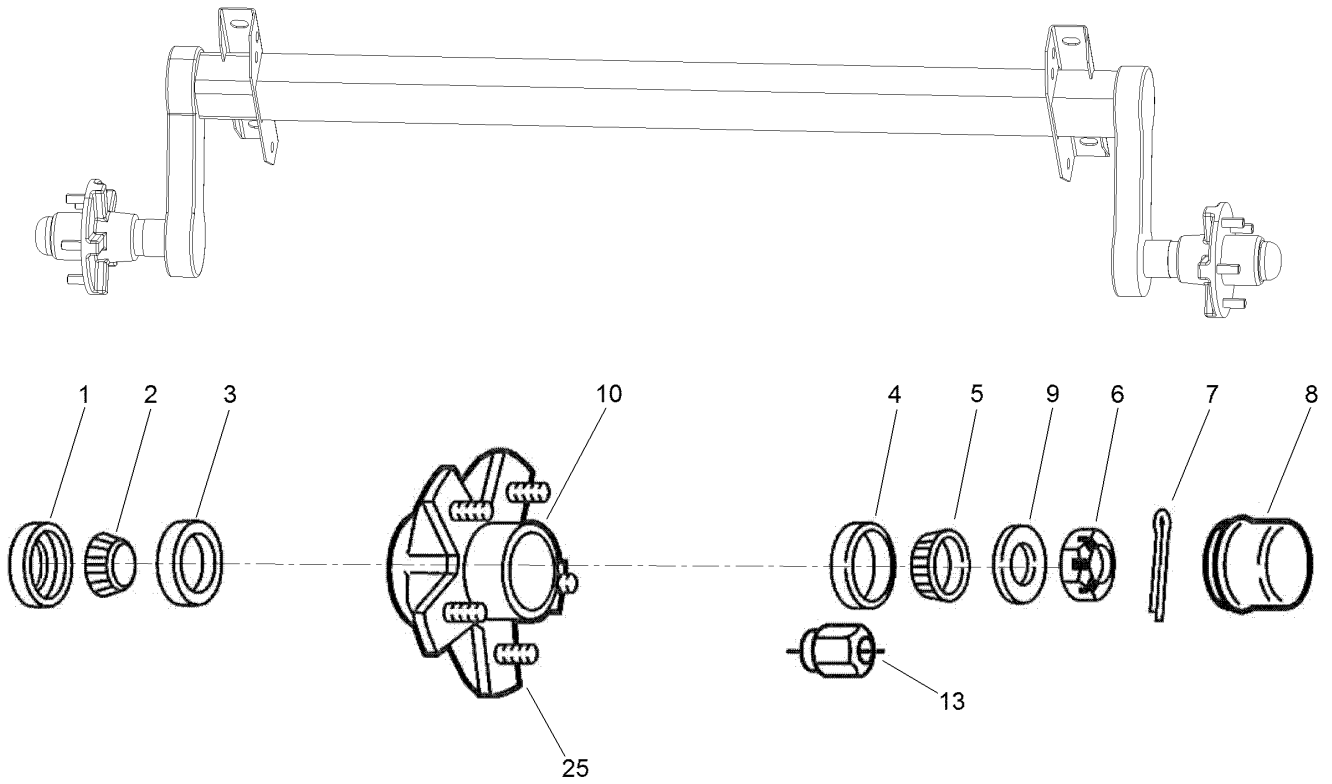
● Not illustrated



Frame and Axle Assembly (continued)

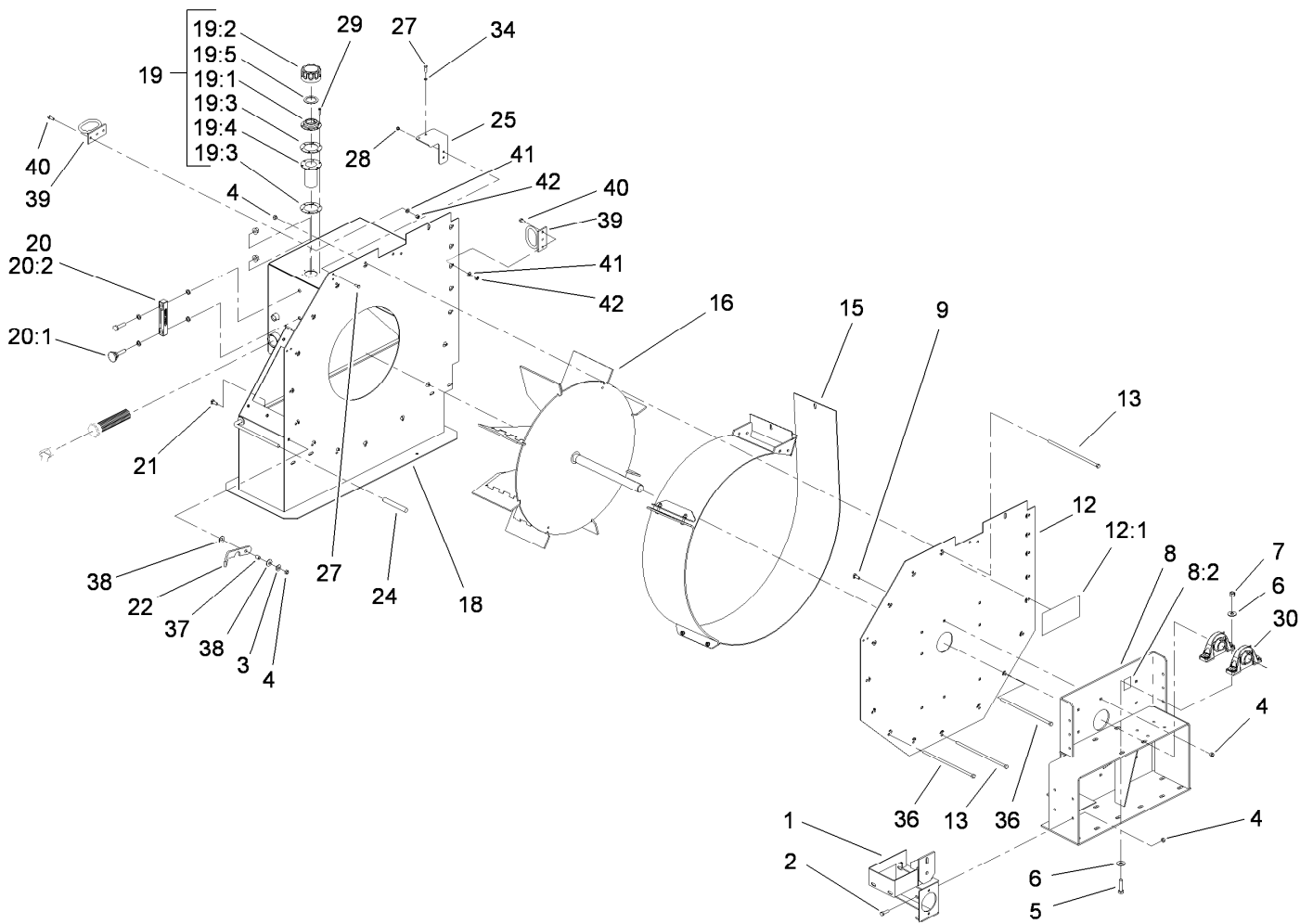
Ref.	Part Number	Qty.	Description	Ref.	Part Number	Qty.	Description
30	CS130-00	2	Spacer	44	106-0169	1	Valve-Control, Three Spool
31	106-0186	1	Mount-Valve	44:1	107-1550	1	Seal Kit ●
31:2	106-0183	1	Decal-Panel, Control	45	322-13	6	Screw-HH
32	SVA17100-03	1	Stand-Valve	49	106-0171-03	1	Guard-Hose
33	SVA17200-03	1	Tube-Horizontal	50	SV136-00-03	1	Roller-Chain
34	SVA17000-03	1	Tube-Vertical	52	325-12	1	Screw-HH
35	SVA18500	1	Handle-Locking	54	322-2	4	Screw-HH
36	SVA17400-03	1	Hanger-Hose, Right	55	3253-4	4	Washer-Lock
37	SVA16900-03	1	Stand-Valve	56	3256-23	10	Washer-Plain
38	SVA17900-03	1	Hanger-Hose, Left	57	105-4855-03	1	Support
39	323-11	9	Screw-HH	58	325-10	6	Screw-HH
40	3296-29	6	Nut-Lock, NI	59	110-7505	1	Lockout-Valve
41	3231-31	1	Screw-CARR	59:1	110-7506	1	Decal-Caution (CE)
42	SVA17700	1	Spacer	60	107-1186	1	Pin
43	106-0168	1	Valve-Control, Single Spool	61	323-7	1	Screw-HH
43:1	107-1551	1	Seal Kit ●	62	133-8061	1	Decal-Warning

● Not illustrated



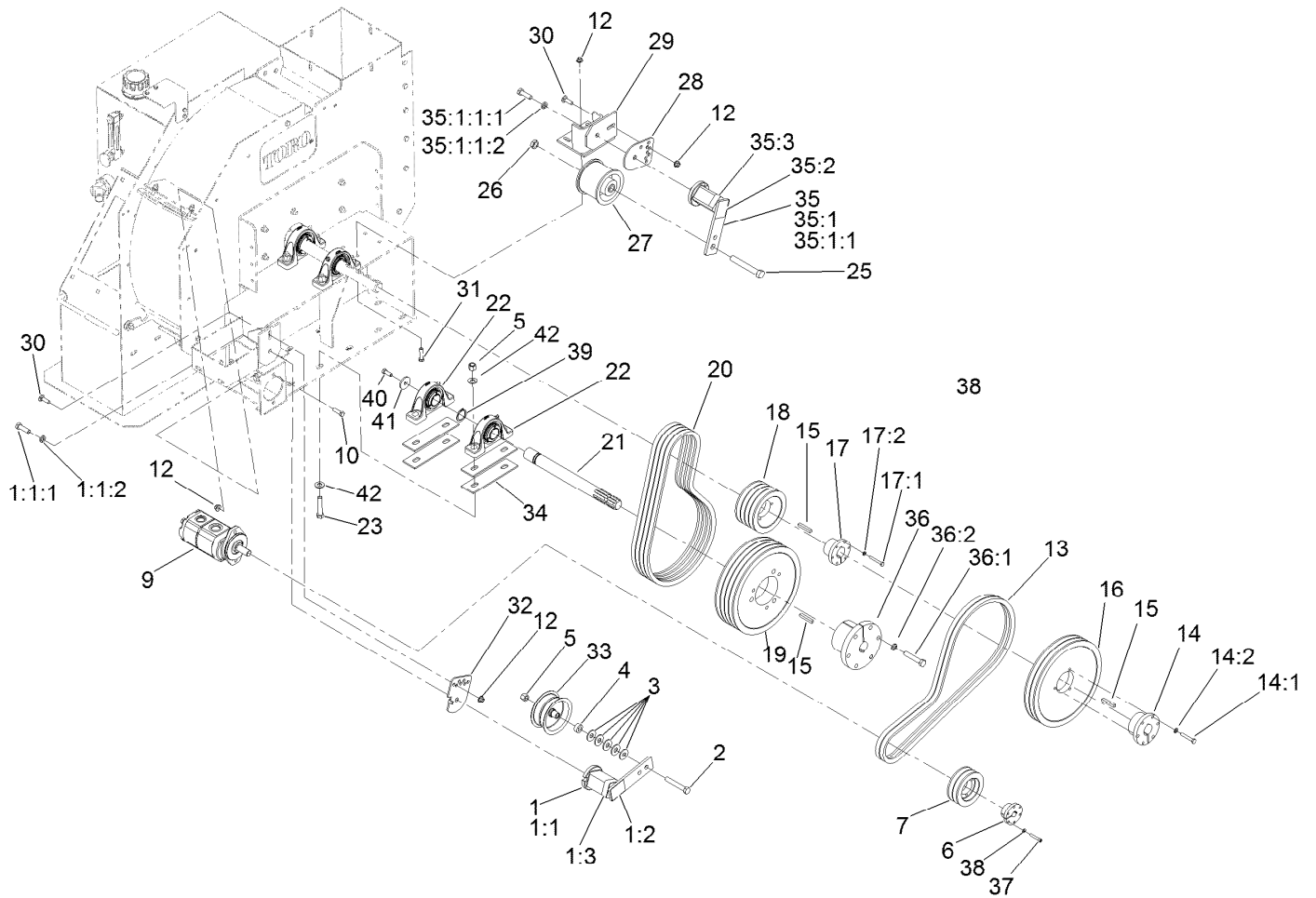
Axle and Hub Assembly No. SVP20000

Ref.	Part Number	Qty.	Description
1	108-0694	2	Seal-Grease
2	254-106	2	Cone-Bearing, Tapered
3	254-107	2	Cup-Bearing, Tapered
4	254-72	2	Bearing-Cup, Tapered
5	254-92	2	Cone-Bearing, Outer
6	121-2693	2	Nut-Spindle
7	121-2694	2	Pin-Cotter
8	108-0693	2	Cap-Grease
9	121-2696	2	Washer-Spindle
10	121-2698	10	Stud-Wheel
13	121-2699	10	Nut-Cone
25	121-2697	2	Hub



Impeller Assembly

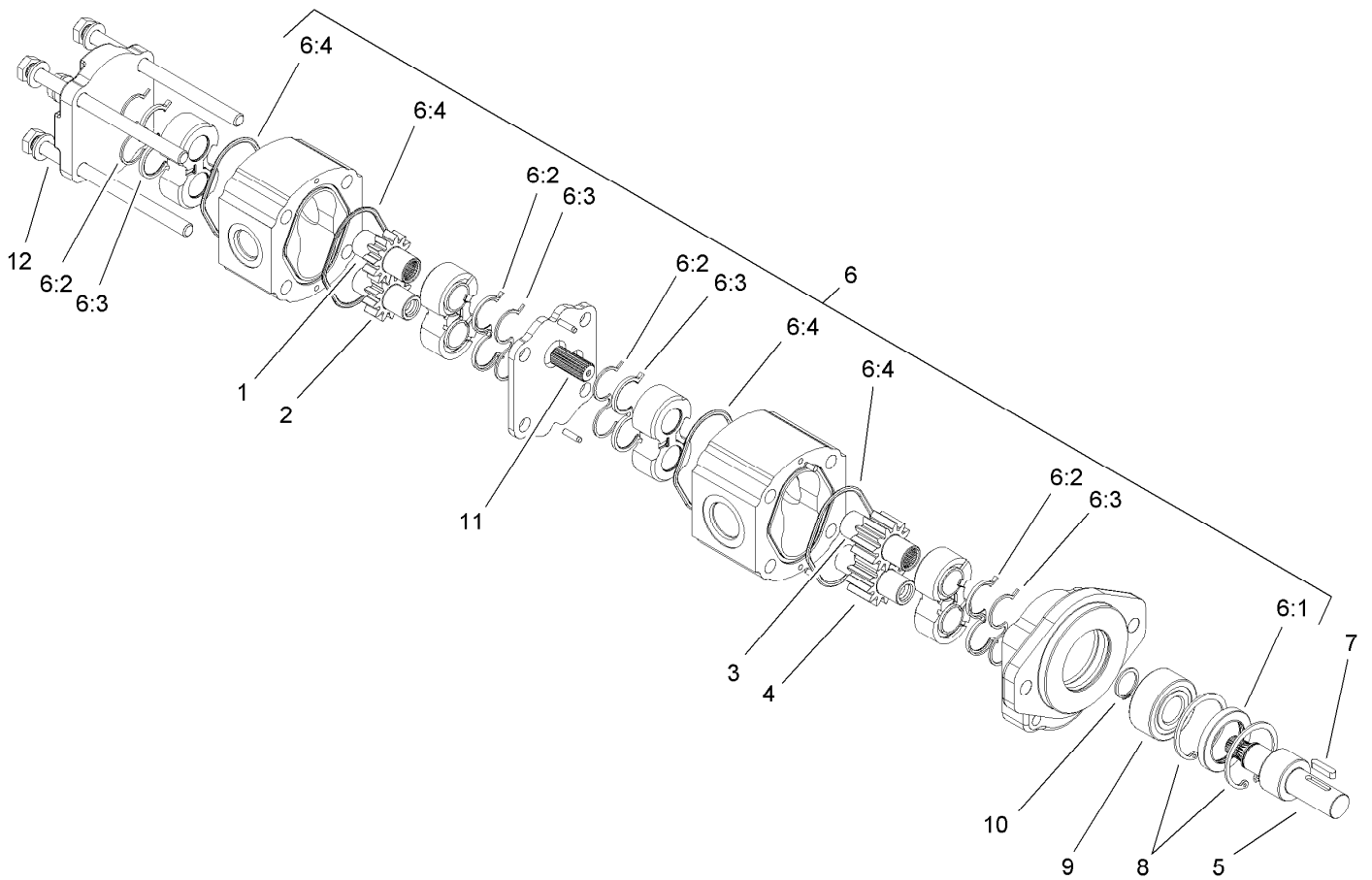
<i>Ref.</i>	<i>Part Number</i>	<i>Qty.</i>	<i>Description</i>	<i>Ref.</i>	<i>Part Number</i>	<i>Qty.</i>	<i>Description</i>
1	108-0894-01	1	Mount-Pump	19:5	76-1720	1	Gasket-Cap, Filler
2	323-7	4	Screw-HH	20	SVB14700	1	Thermometer ASM
3	3256-4	5	Washer-Flat	20:1	108-0852	1	Probe-Temp
4	104-8301	30	Nut-HF, NI	20:2	108-0853	1	Body-Temp
5	325-8	4	Screw-HH	21	3231-28	1	Screw-CARR
6	87-7270	8	Washer-Thrust	22	106-0236-01	1	Latch
7	3296-23	4	Nut-Lock, NI	24	PF225-00	1	Cover-Handle
8	106-0191	1	Mount-Drive	25	SVB15900-01	1	Mount-Filter
8:2	117-4979	1	Decal-Warning	27	32105-15	4	Screw-HWH
9	3231-2	8	Bolt-CARR	28	3296-42	2	Nut-Lock, NI
12	106-0206	1	Panel-Back	29	32144-87	6	Screw-HWHTF
12:1	66-6140	1	Decal	30	117-8263	2	Bearing-Block, Pillow
13	106-0184	15	Screw-HH	34	3253-3	2	Washer-Lock
15	107-1359	1	Band ASM	36	105-4865	2	Screw-HH
16	107-1431-01	1	Impeller ASM	37	92-9025	1	Spacer
18	SV305-00-01	1	Funnel ASM	38	3290-473	2	Washer-Belleville
19	95-7004	1	Filler Cap ASM	39	104-0028	2	Guide-Hose
19:1	353-961	1	Flange	40	322-5	4	Screw-HH
19:2	353-962	1	Cap ASM	41	3256-23	4	Washer-Plain
19:3	353-963	2	Gasket	42	3296-29	4	Nut-Lock, NI
19:4	62-2610	1	Strainer-Cap, Filler				



Drive Assembly

Ref.	Part Number	Qty.	Description	Ref.	Part Number	Qty.	Description
1	105-0667	1	Idler Tensioner ASM	14:2	3253-4	3	Washer-Lock
1:1		1	Tensioner-Idler ●	15	61-004-0451	3	Key-Square
1:1:1	33116-040	1	Screw-HH	16	106-0353	1	Pulley
1:1:2	3253-7	1	Washer-Lock	17	106-0360	1	Pulley Bushing ASM
1:2	105-0668	1	Decal-Align	17:1	321-11	3	Screw-HH
1:3	105-0669	1	Decal-Angle	17:2	3253-3	3	Washer-Lock
2	325-13	1	Screw-HH	18	106-0355	1	Pulley
3	3256-6	5	Washer-Flat	19	106-0356	1	Pulley
4	GF213-00	1	Spacer	20	SBC17000	4	V-Belt
5	3296-23	5	Nut-Lock, NI	21	117-8257	1	Shaft-Input
6	106-0357	1	Bushing-Pulley	22	117-8263	2	Bearing-Block, Pillow
7	106-0352	1	Pulley	23	325-10	4	Screw-HH
9	108-0856	1	Pump-HYD	25	3214-15	1	Screw-HH
10	323-7	6	Screw-HH	26	3220-6	1	Nut-Jam
12	104-8301	8	Nut-HF, NI	27	105-4821	1	Idler-Pulley
13	SVB13600	2	V-Belt	28	105-4839	1	Stabilizer-Tensioner
14	106-0358	1	Pulley Bushing ASM	29	SV286-00-01	1	Bracket-Lovejoy
14:1	322-10	3	Screw-HH	30	3231-25	2	Bolt-CARR

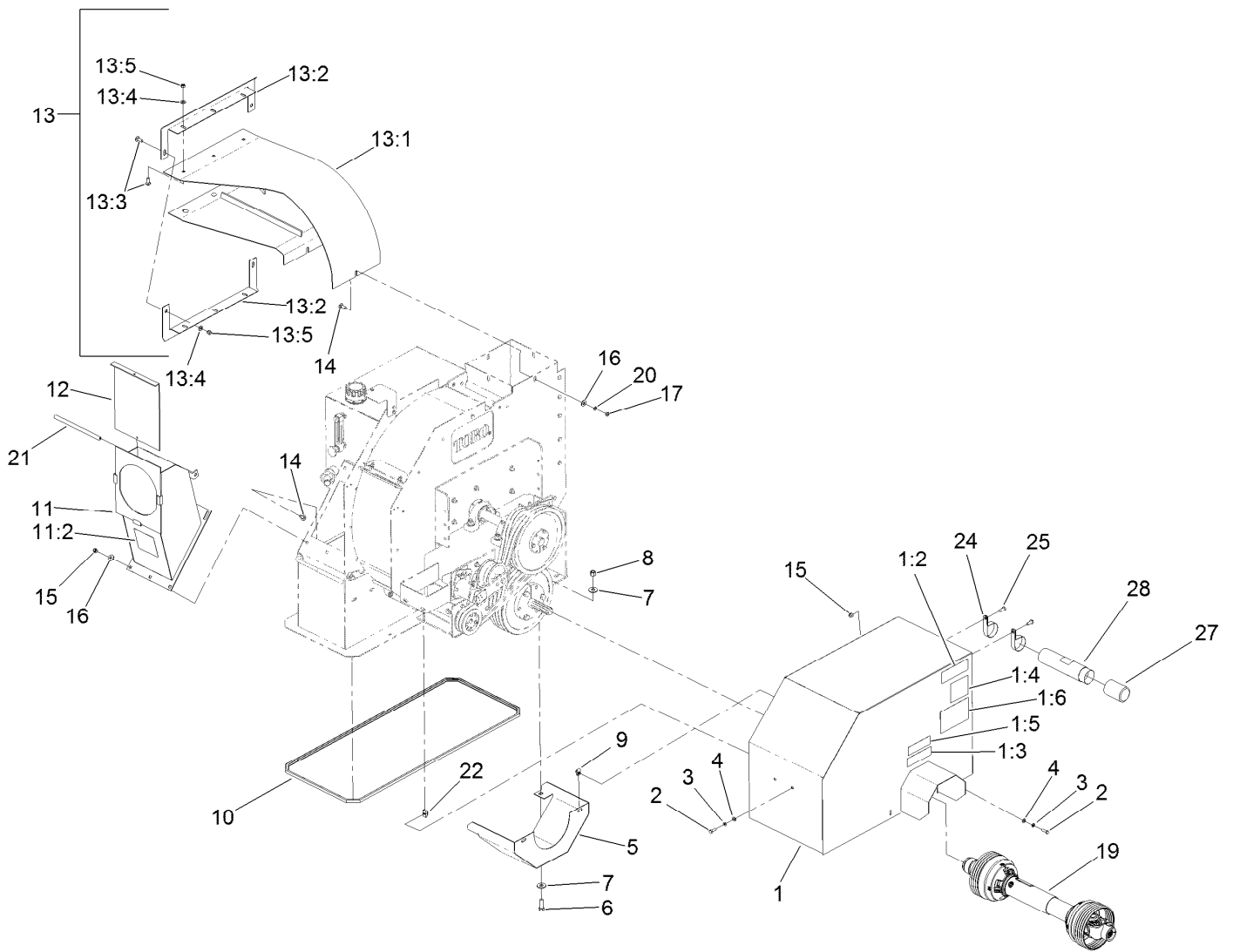
● Not serviced separately



Hydraulic Double Gear Pump Assembly No. 108-0856

Ref.	Part Number	Qty.	Description
1		1	Gear-Drive ●
2		1	Gear-Driven ●
3		1	Gear-Drive ●
4		1	Gear-Driven ●
5		1	Shaft ●
6	108-2438	1	Seal Kit
6:1		1	Seal-Lip ●
6:2		4	Seal-Back Up ●
6:3		4	Seal-Channel ●
6:4		4	Seal-Section ●
7	6366	1	Key
8		1	Bearing ●
9		1	Ring-Retaining ●
10		1	Ring-Retaining ●
11		1	Shaft ●
12		1	Screw ●

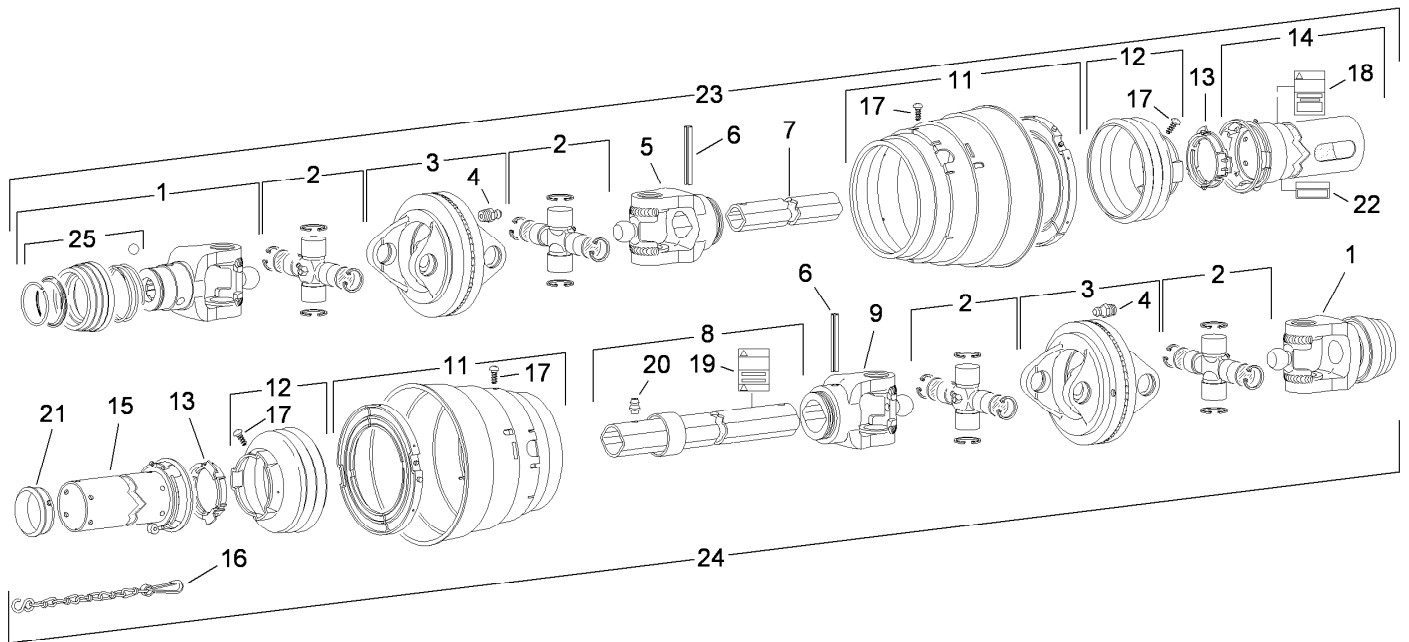
● Not serviced separately



Power-Take-Off Shaft and Shield Assembly

Ref.	Part Number	Qty.	Description	Ref.	Part Number	Qty.	Description
1	106-0193	1	Shield-Drive	13:1	SV216-00-01	1	Transition-Spout
1:2	105-0698	1	Decal-Caution	13:2	SVA10200-01	2	Seal-Dust
1:3	105-0628	1	Decal-Caution, U-Joint	13:3	3231-2	8	Bolt-CARR
1:4	105-4587	1	Decal-Caution, Ce	13:4	3256-24	8	Washer-Flat
1:5	105-0627	1	Decal-Caution	13:5	3296-39	8	Nut-Lock, NI
1:6	106-0163	1	Decal-Danger, Blowers	14	3231-2	10	Bolt-CARR
2	322-5	6	Screw-HH	15	3296-39	8	Nut-Lock, NI
3	3253-4	6	Washer-Lock	16	3256-4	10	Washer-Flat
4	3256-23	6	Washer-Plain	17	3217-7	4	Nut-Hex
5	105-4842-01	1	Guard-Pulley	19	SVA10500	1	Shaft-PTO, Double
6	325-6	2	Screw-HH	20	3253-21	4	Washer-Lock
7	3256-6	4	Washer-Flat	21	106-0207	1	Trim-Chute Vac
8	3296-23	2	Nut-Lock, NI	22	CSP11800	2	Nut-Thick, Tinnerman
9	94-2413	4	Nut-U	24	2412-133	2	Clamp-R
10	105-4843	1	Trim	25	323-5	2	Screw-HH
11	106-0192	1	Chute-Vac	27	104-7048	1	Cap-Housing
11:2	106-0166	1	Decal-Danger, Blower	28	104-7050	1	Tube-Manual
12	SV143-00-01	1	Door-Hose	99	138-9038	1	Decal-Danger, Entanglement ●
13	SVA14900	1	Spout ASM				

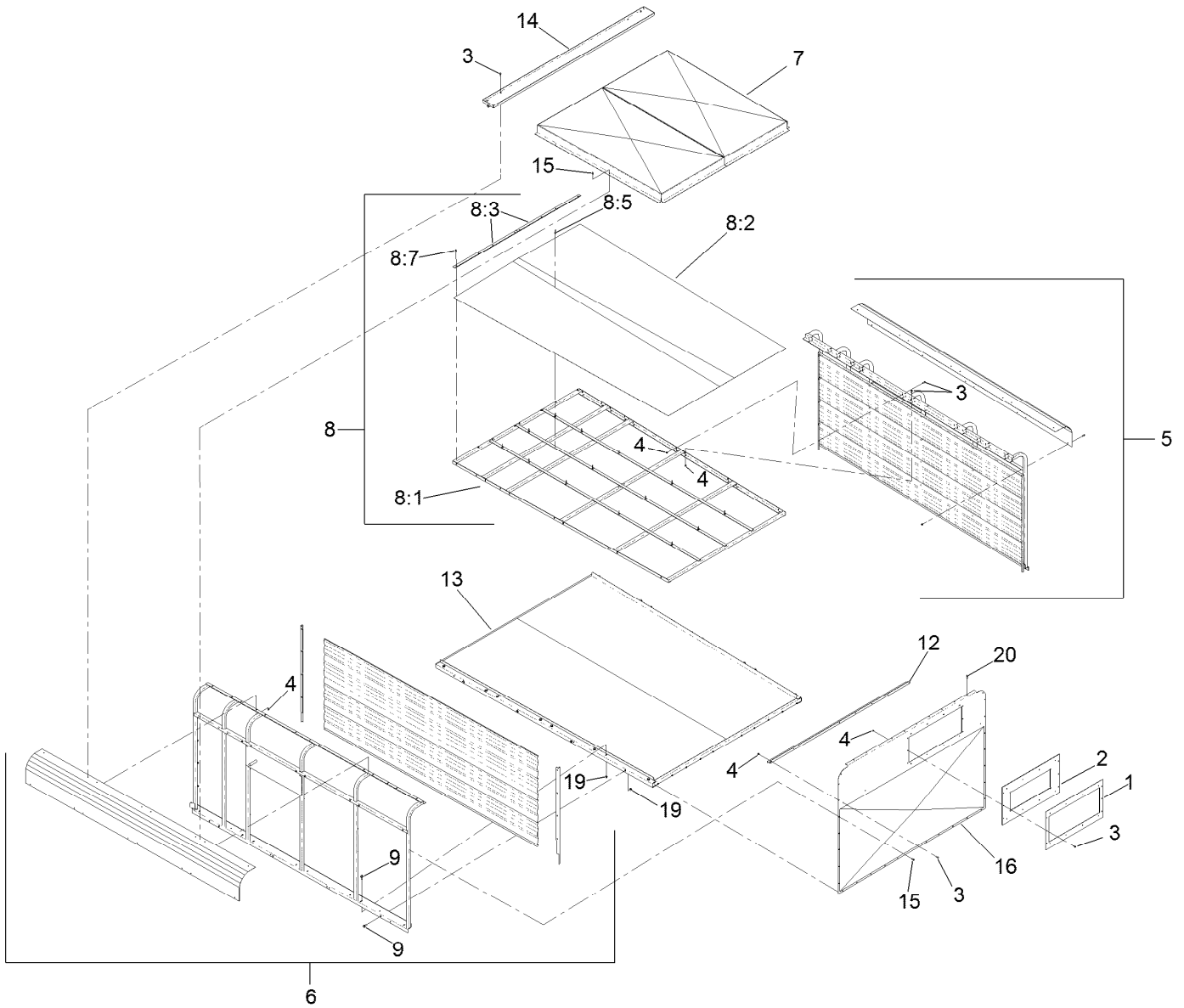
● Not illustrated



Double Power-Take-Off Shaft Assembly No. SVA10500

Ref.	Part Number	Qty.	Description
1	120-6119	1	Yoke ASM
2	SVA10501	4	Cross And Bearing Kit
3	120-6120	2	Double Yoke
4	84-6290	2	Zerk-Grease
5	SVA10508	1	Yoke-Inboard, Tractor End
6	105-2927	2	Pin-Spring
7	120-6121	1	Tube-Inner
8	SVA10511	1	Tube-Outer
9	SVA10509	1	Yoke-Inboard, Implement End
11	120-6122	1	Guard And Bearing ASM
12	120-6123	1	Guard Cone,3 Rib
13	105-2936	2	Bearing-Ring
14	SVA10502	1	Shield-Outer
15	SVA10503	1	Shield-Inner
16	77-4760	1	Chain-Safety
17	84-6360	14	Screw
18	92-7936	1	Decal-Warning
19	92-7937	1	Decal-Warning
20	84-6370	1	Zerk-Grease
21		1	Support-Bearing ●
22		1	Decal-Lubrication ●
23	SVA1050T	1	Shaft-Double Cv, PTO (Tractor Half)
24	SVA1050I	1	Shaft-Double Cv, PTO (Implement Half)
25	120-6124	1	Collar Kit ASM

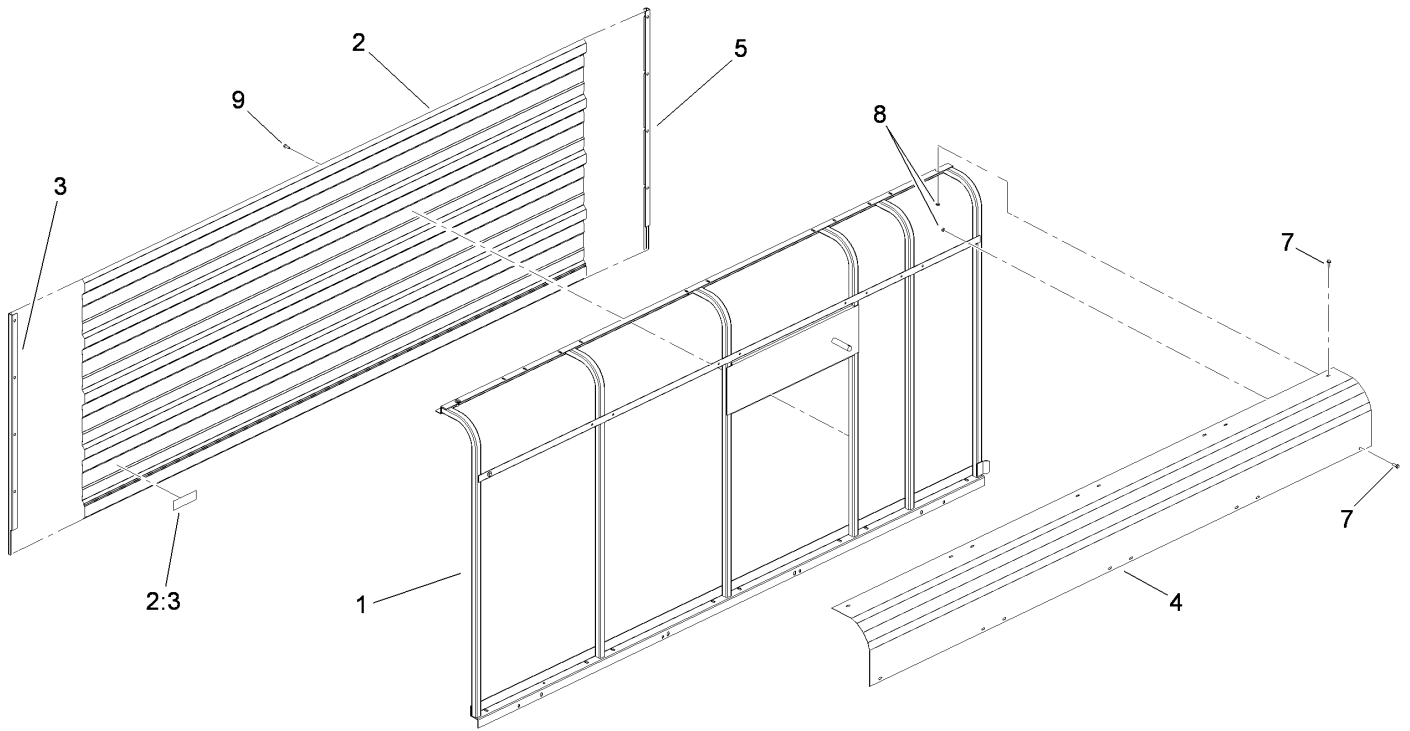
● Not serviced separately



Sidewall Assembly

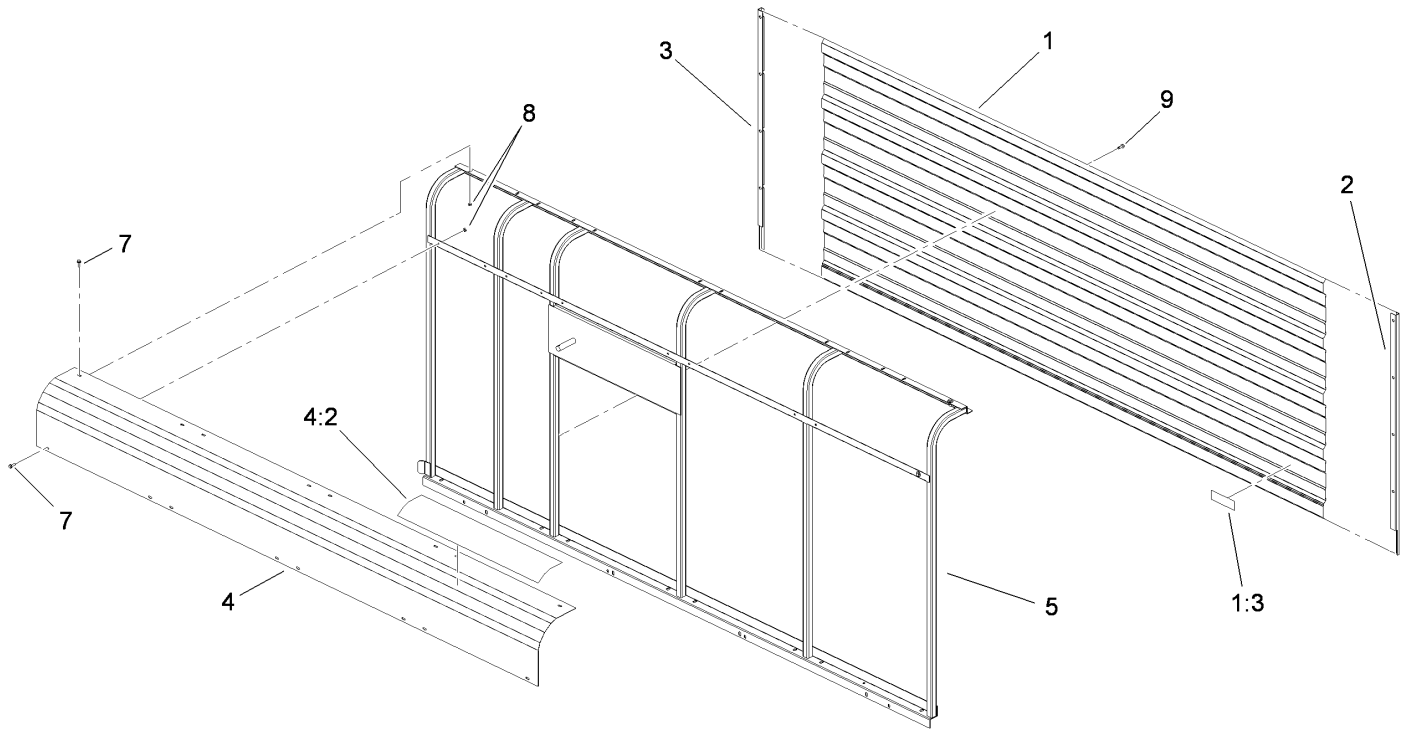
Ref.	Part Number	Qty.	Description	Ref.	Part Number	Qty.	Description
1	107-1362-01	1	Plate	8:5	3269-21	15	Rivet-Pop
2	107-1361	1	Gasket-Dust	8:7	105-0618	8	Screw-Selfdr
3	32105-15	57	Screw-HWH	9	3234-42	24	Screw-HHF
4	3296-42	55	Nut-Lock, NI	12	SVA12000-01	1	Brace-Front
5		1	LH Sidewall ASM ●	13	VT301-00-03	1	Frame-Floor
6		1	RH Sidewall ASM ●	14	SVA11900-01	1	Hinge Mount ASM
7	107-1495-01	1	Cap-Dust	15	105-0618	30	Screw-Selfdr
8		1	Roof-Trailer ●	16	107-1363-01	1	Sheet-Trailer, Front
8:1	VT306-00-01	1	Roof Frame ASM	19	3290-357	24	Nut-HHF, Whiz
8:2	VT307-00	2	Screen-Roof	20	105-4848	6	Screw
8:3	VT308-00-01	2	Trim-Edge				

● Not serviced separately



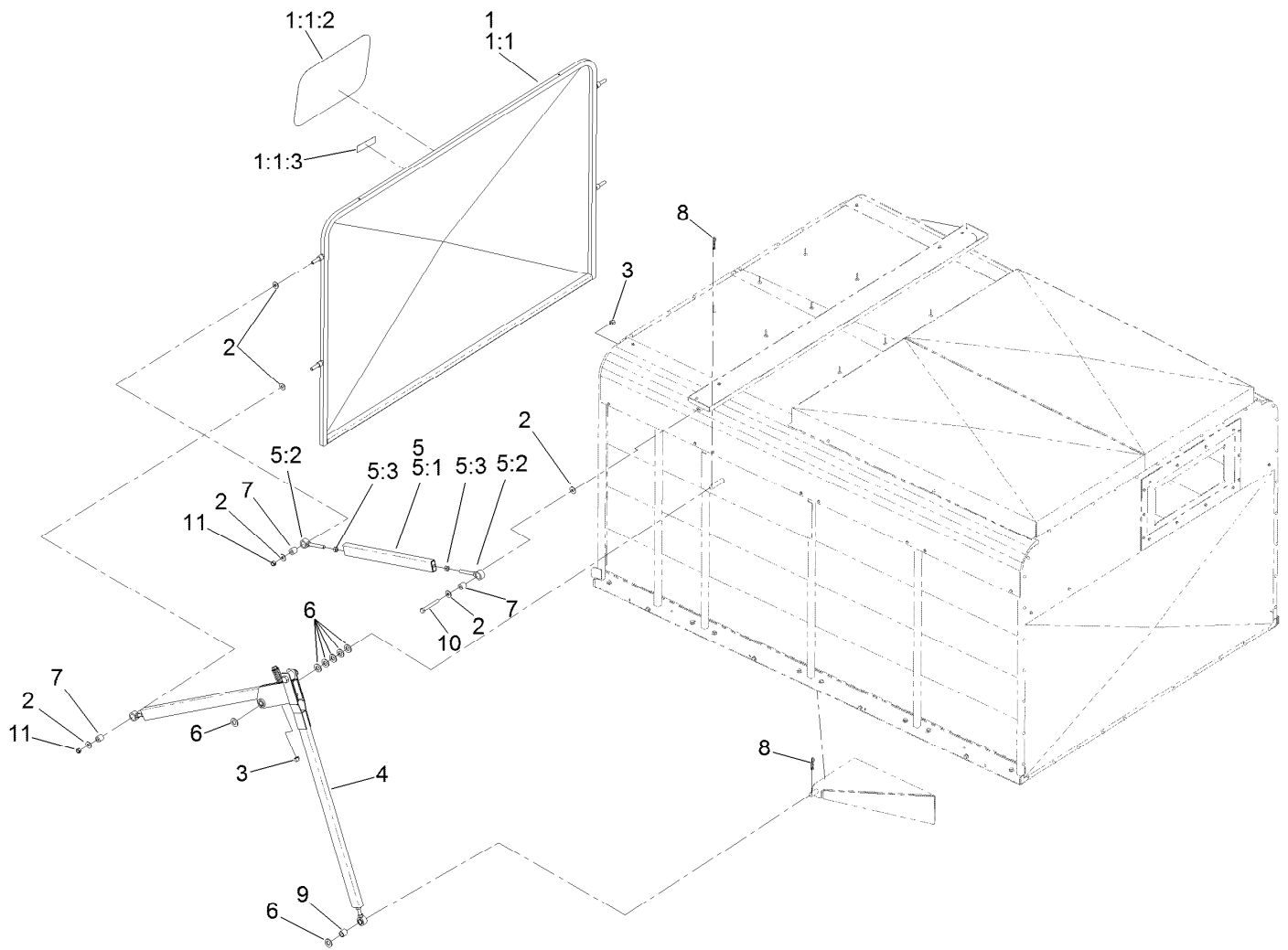
Left Hand Sidewall Assembly

<i>Ref.</i>	<i>Part Number</i>	<i>Qty.</i>	<i>Description</i>
1	VT203-0L-01	1	Left Wall ASM
2	106-0176	1	Sheet-Sidewall, LH
2:3	106-0162	1	Decal-Caution, Stay Clear (CE)
3	VT130-0L-01	1	Trim-Enclosure, Left
4	106-0175	1	Corner-Roof, LH
5	VT130-0R-01	1	Trim-Enclosure, Right
7	32105-15	8	Screw-HWH
8	3296-42	8	Nut-Lock, NI
9	105-0618	20	Screw-Selfdr



Right Hand Sidewall Assembly

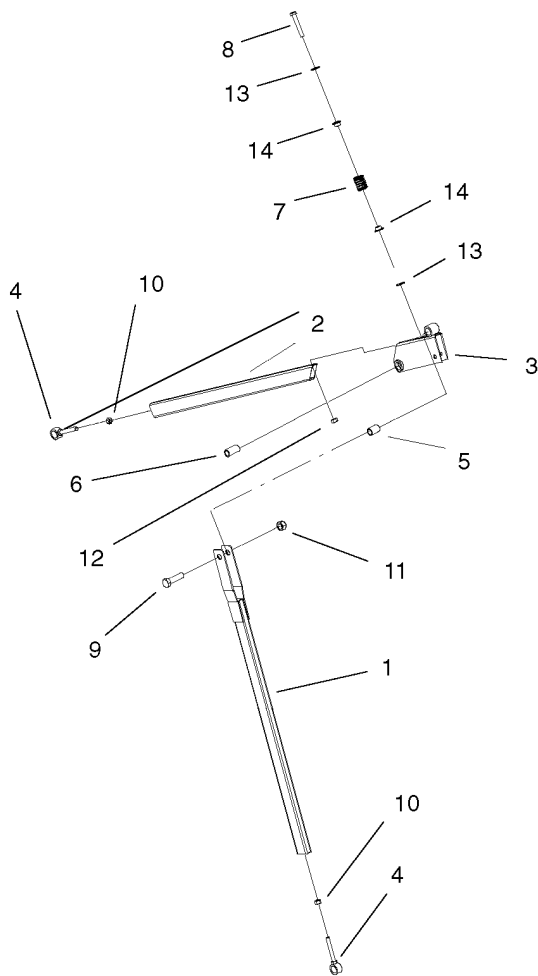
<i>Ref.</i>	<i>Part Number</i>	<i>Qty.</i>	<i>Description</i>
1	106-0174	1	Sheet-Sidewall, RH
1:3	106-0162	1	Decal-Caution, Stay Clear (CE)
2	VT130-0R-01	1	Trim-Enclosure, Right
3	VT130-0L-01	1	Trim-Enclosure, Left
4	106-0173	1	Corner-Roof, RH
4:2	105-0738	1	Decal-RH
5	VT203-0R-01	1	Right Wall ASM
7	32105-15	8	Screw-HWH
8	3296-42	8	Nut-Lock, NI
9	105-0618	20	Screw-Selfdr



Door Assembly

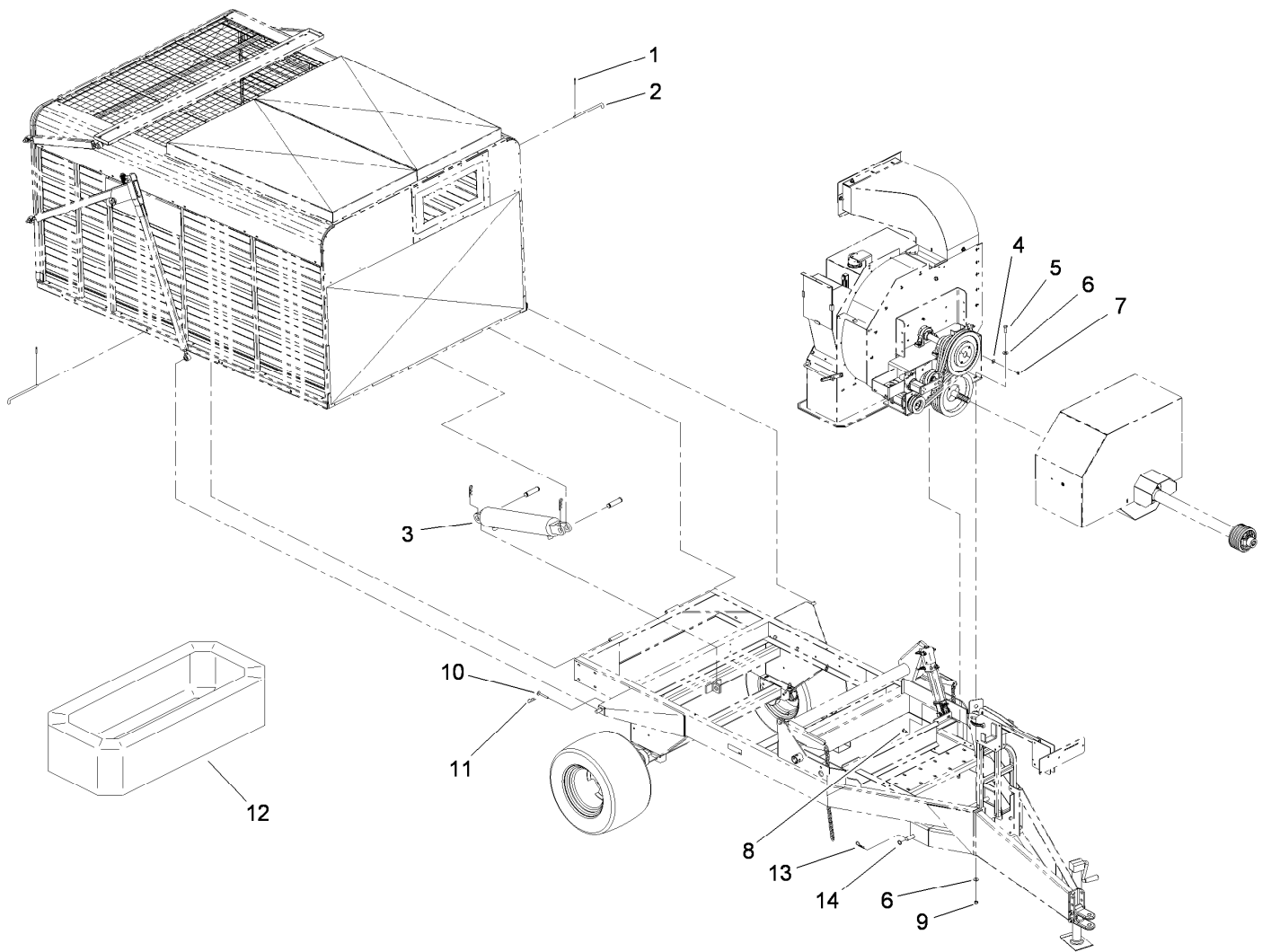
Ref.	Part Number	Qty.	Description	Ref.	Part Number	Qty.	Description
1	130-8548	1	Trailer Door ASM	5:1	SVA11700-01	1	Link-ASM
1:1		1	Door-Trailer ●	5:2	SVA12200	2	Pivot-Hinge
1:1:2	67-7920	1	Decal	5:3	3217-9	2	Nut-HH
1:1:3	106-0162	1	Decal-Caution, Stay Clear (CE)	6	3256-28	14	Washer-Flat
2	3256-5	12	Washer-Flat	7	SVA12700	6	Bushing
3	3296-23	2	Nut-Lock, NI	8	9335064	4	Pin-Cotter, Hair
4	SVA15100	2	Link-Lower Door ASM	9	SVA12800	2	Bushing
5	SVA15000	2	Link-Upper Door ASM	10	325-17	2	Screw-HH
				11	32153-5	4	Nut-Hex

● Not serviced separately



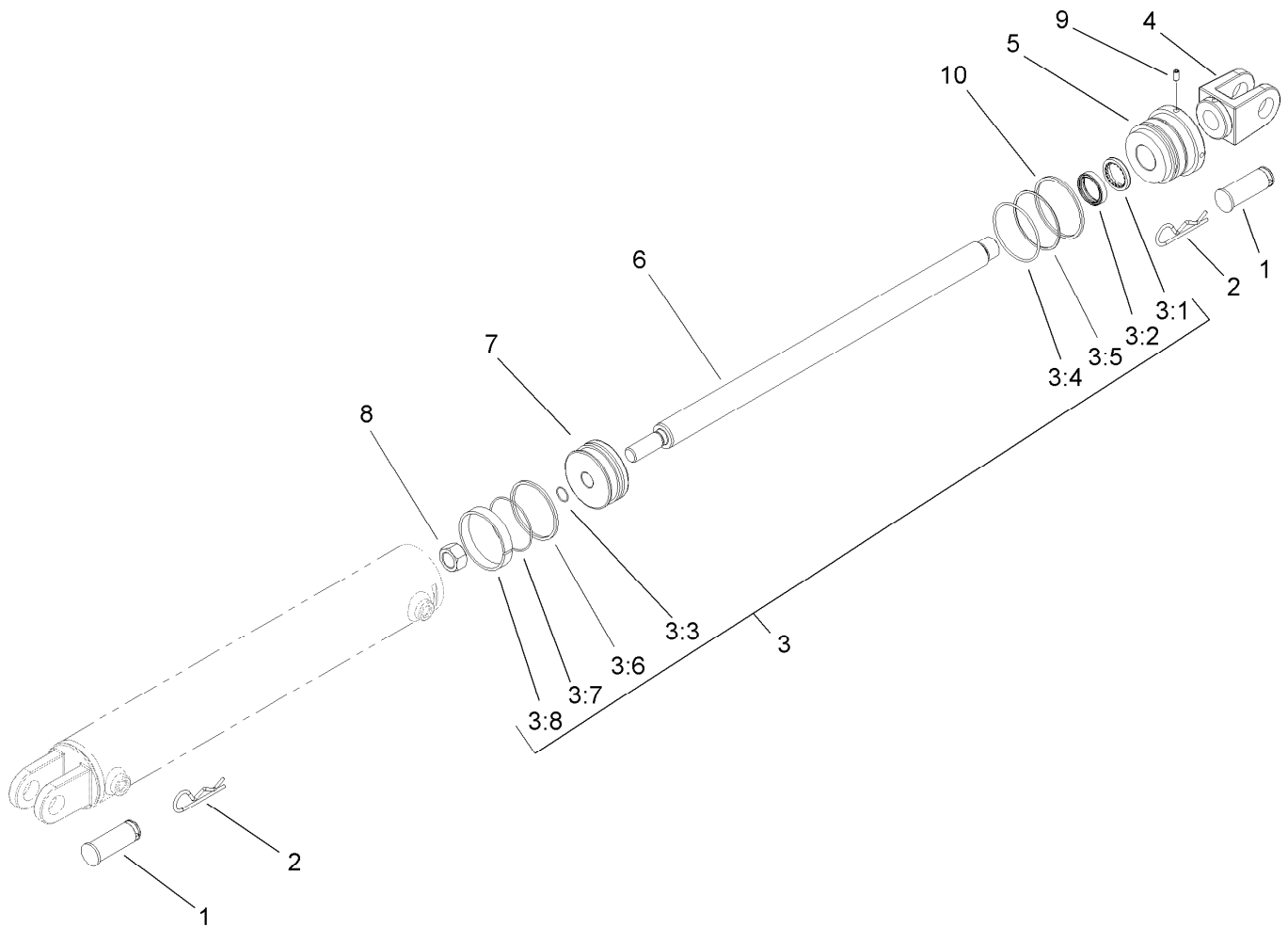
Lower Link Door Assembly

<i>Ref.</i>	<i>Part Number</i>	<i>Qty.</i>	<i>Description</i>
1	SVA11800-01	1	Pull Arm ASM
2	SVA11600-01	1	Lower Linkage ASM
3	SVA12100-01	1	Mount-Bracket
4	SVA12200	2	Pivot-Hinge
5	SVA12900	1	Bushing
6	SVA13000	1	Bushing
7	GF206-00	1	Spring-Compression
8	325-13	1	Screw-HH
9	328-3	1	Screw-HH
10	3217-9	2	Nut-HH
11	3296-51	1	Nut-Lock, NI
12	3296-23	1	Nut-Lock, NI
13	3256-26	2	Washer-Flat
14	SVA13300	2	Bushing-Flange



Cylinder Assembly

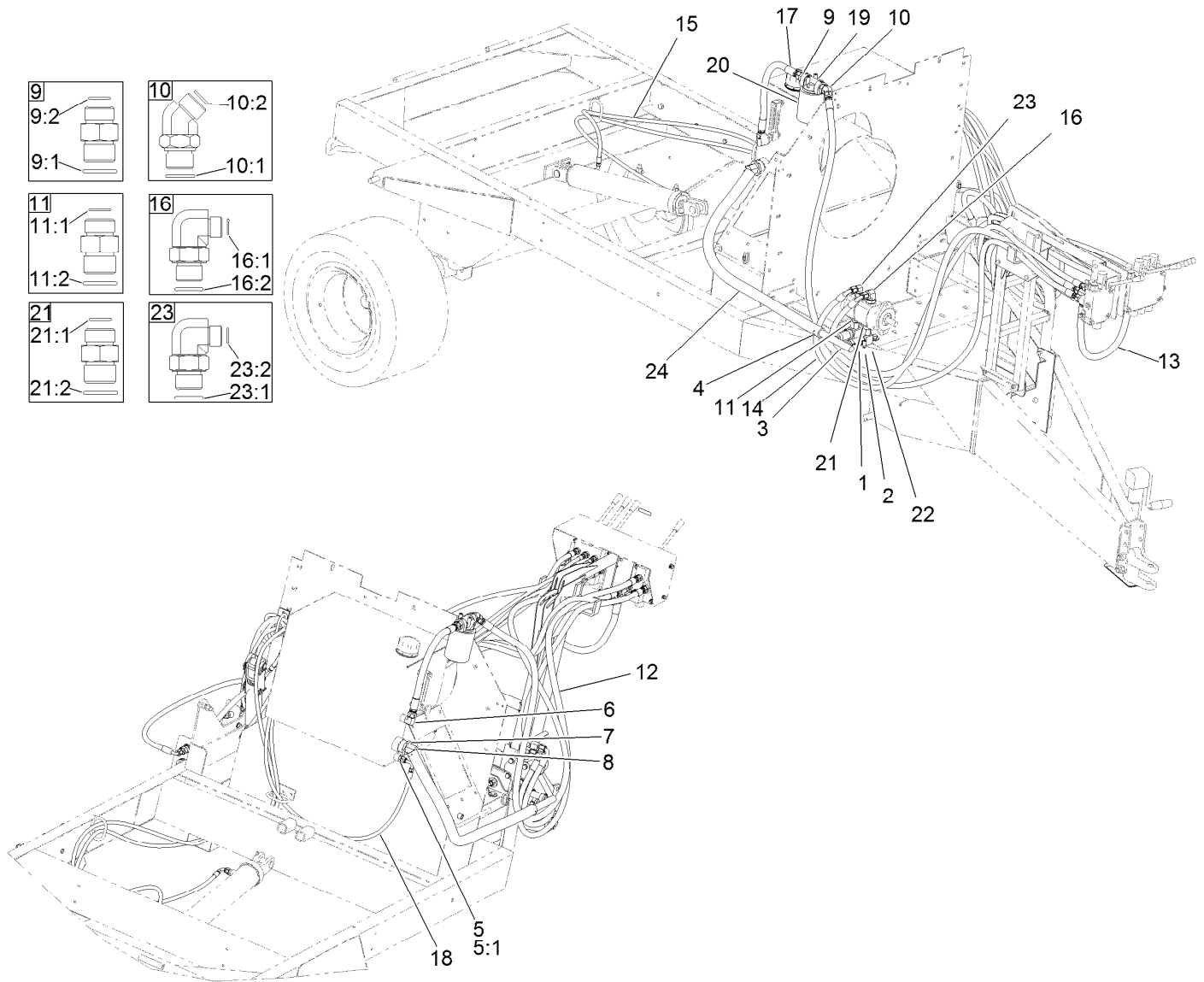
Ref.	Part Number	Qty.	Description
1	3272-22	2	Pin-Cotter
2	PB114-00	2	Pin-Hinge
3	107-1360	1	HYD Cylinder ASM
4	3256-4	4	Washer-Flat
5	325-6	5	Screw-HH
6	3256-6	10	Washer-Flat
7	3296-39	4	Nut-Lock, NI
8	3231-25	4	Bolt-CARR
9	3296-23	5	Nut-Lock, NI
10	SVA12600	2	Door Pin ASM
11	3290-355	2	Pin-Hair
12	SVP15100	1	Ring-Canvas
13	9335064	2	Pin-Cotter, Hair
14	3256-29	2	Washer-Flat



Hydraulic Cylinder Assembly No. 107-1360

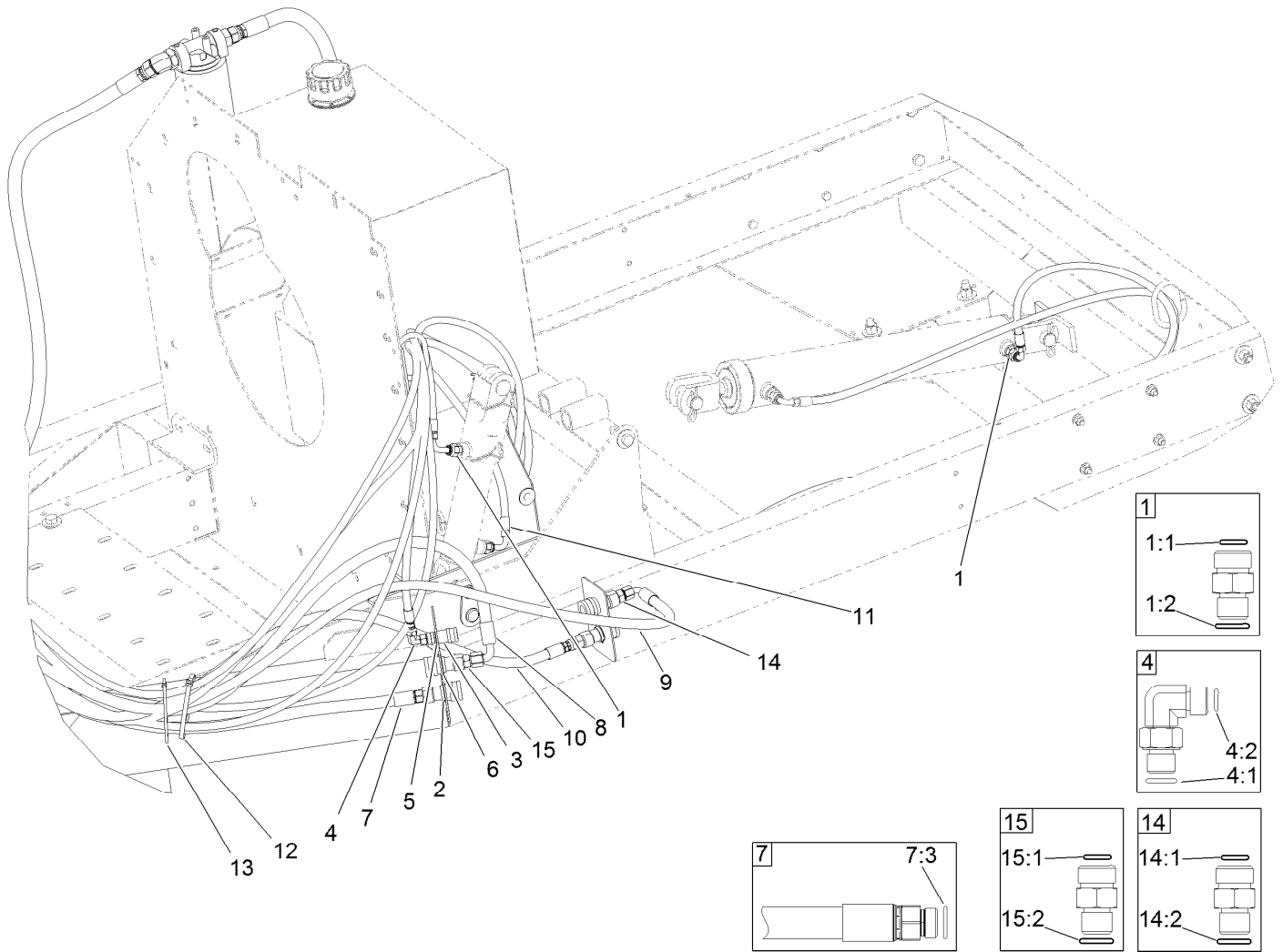
Ref.	Part Number	Qty.	Description
1	107-1182	2	Pin-Clevis
2	9335064	2	Pin-Cotter, Hair
3	108-2435	1	Seal Kit
3:1		1	Wiper ●
3:2		1	Seal ●
3:3		1	O-Ring ●
3:4		1	O-Ring ●
3:5		1	Ring-Back Up ●
3:6		1	Seal ●
3:7		1	O-Ring ●
3:8		1	Ring-Wear ●
4	108-2436	1	Clevis-Rod
5		1	Head ●
6		1	Rod ●
7		1	Piston ●
8		1	Nut-Lock ●
9		1	Screw-Set ●
10		1	Retaining Ring ●

● Not serviced separately



Hydraulic Assembly

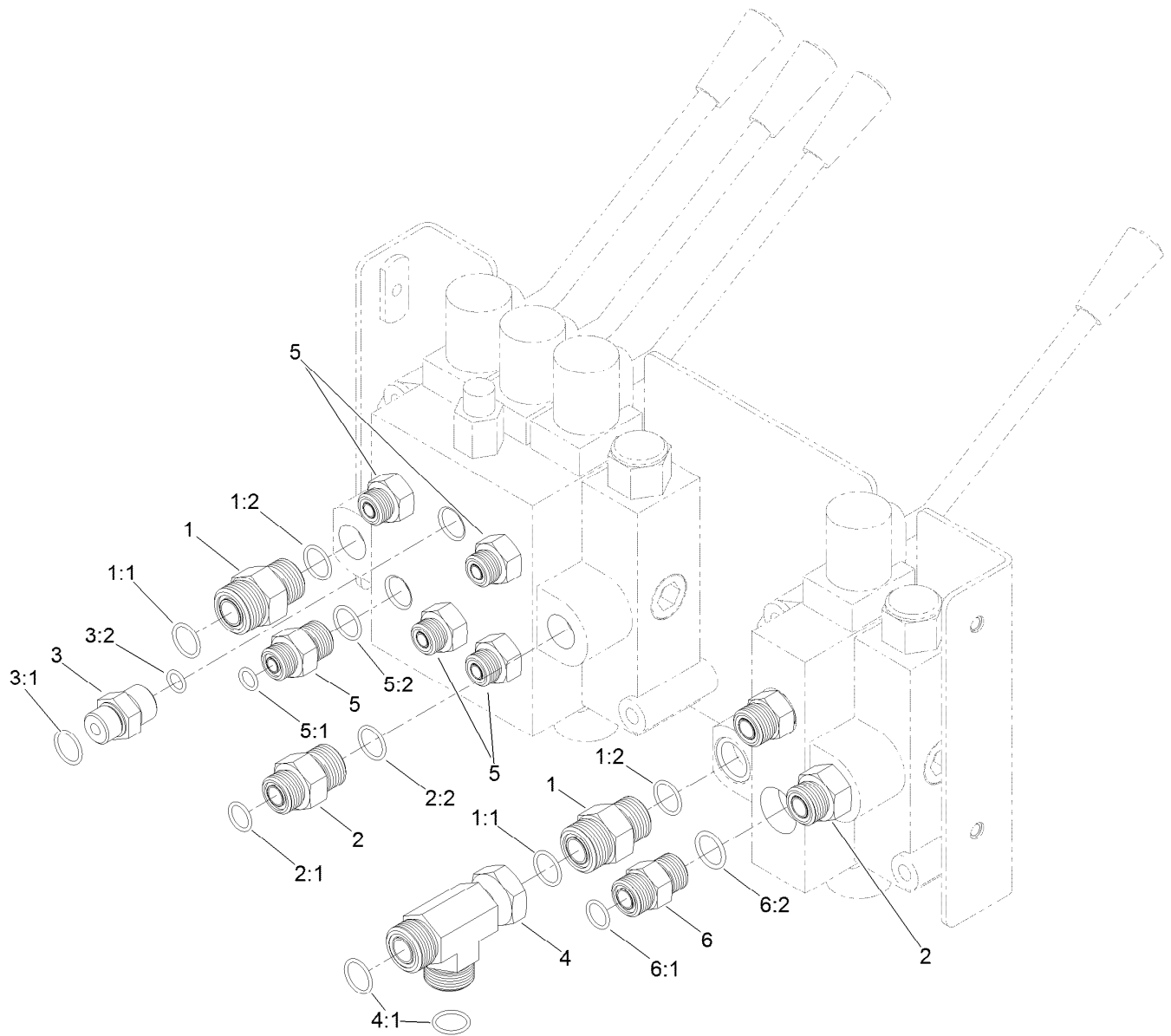
Ref.	Part Number	Qty.	Description	Ref.	Part Number	Qty.	Description
1	106-0072	2	Hose-Suction	13	105-0648	1	Hyd Hose ASM
2	2412-129	4	Clamp-Hose	14	105-0653	2	Hyd Hose ASM
3	108-0855	1	Tube-Maniflod	15	105-0652	2	Hyd Hose ASM
4	2412-34	2	Clamp-Hose	16	340-131	1	Fitting-HYD, 90 DEG
5	340-124	1	Adapter	16:1	237-30	1	O-Ring
5:1	237-22	1	O-Ring	16:2	237-81	1	O-Ring
6	340-108	1	Fitting-HYD	17	105-0638	1	Hyd Hose ASM
7	SVB14400	1	Strainer-Suction	18	105-0654	1	Hyd Hose ASM
8	SVB15100	1	Adapter-Cms	19	92-5821	1	Head-Filter
9	340-8	1	Fitting-Straight	20	54-0110	1	Filter-Oil, Transmission
9:1	237-65	1	O-Ring	21	340-91	1	Fitting-STR
9:2	237-81	1	O-Ring	21:1	237-58	1	O-Ring
10	340-156	1	Fitting-Elbow 45	21:2	237-146	1	O-Ring
10:1	237-65	1	O-Ring	22	108-0884	2	Fitting-Elbow, 90 DEG
10:2	237-81	1	O-Ring	23	340-105	1	Fitting-Elbow, 90 DEG
11	340-9	1	Fitting-STR	23:1	237-80	1	O-Ring
11:1	237-58	1	O-Ring	23:2	237-30	1	O-Ring
11:2	237-81	1	O-Ring	24	106-0071	1	Hose-Suction
12	105-0649	1	Hyd Hose ASM				



Lift Hydraulic Assembly

Ref.	Part Number	Qty.	Description
1	340-2	4	Fitting-Straight
1:1	237-22	1	O-Ring
1:2	237-42	1	O-Ring
2	105-4169	4	Coupler-Female
3	63-1220	1	Coupler-Disconnect, Quick
4	340-82	1	Fitting-Elbow, 90 DEG
4:1	237-42	1	O-Ring
4:2	237-21	1	O-Ring
5	32151-83	1	Ring-Snap
6	32120-2	4	Ring-Retaining
7	105-0650	1	Hyd Hose ASM
7:3	237-79	1	O-Ring

Ref.	Part Number	Qty.	Description
8	105-0651	1	Hyd Hose ASM
9	105-0645	1	Hyd Hose ASM
10	105-0646	1	Hyd Hose ASM
11	105-0642	2	Hyd Hose ASM
12	3334-945	10	Tie-Cable
13	3290-379	10	Tie-Cable
14	340-3	2	Fitting-Straight
14:1	237-22	1	O-Ring
14:2	237-79	1	O-Ring
15	340-4	1	Fitting-Straight
15:1	237-30	1	O-Ring
15:2	237-79	1	O-Ring



Hydraulic Fitting Assembly

<i>Ref.</i>	<i>Part Number</i>	<i>Qty.</i>	<i>Description</i>	<i>Ref.</i>	<i>Part Number</i>	<i>Qty.</i>	<i>Description</i>
1	340-7	2	Fitting-Straight	4	340-147	1	Fitting-HYD, Tee
1:1	237-65	1	O-Ring	4:1	237-65	2	O-Ring
1:2	237-80	1	O-Ring	5	340-3	5	Fitting-Straight
2	340-6	2	Fitting-Straight	5:1	237-22	1	O-Ring
2:1	237-30	1	O-Ring	5:2	237-79	1	O-Ring
2:2	237-80	1	O-Ring	6	340-4	2	Fitting-Straight
3	106-0073	1	Fitting-STR,Orif	6:1	237-30	1	O-Ring
3:1	237-22	1	O-Ring	6:2	237-79	1	O-Ring
3:2	237-79	1	O-Ring				

Attachments and Accessories

For 07053 Versa Vac

Product Name	Model/Part
Hose Kit.....	07080
Rubber Finger Deck.....	07081
Combination Deck	07082



Count on it.