



**Count on it.**

**Parts Catalog**

**1800 Power Curve®  
Snowthrower**

Model No. 38381—Serial No. 319000001 and Up



# Ordering Replacement Parts

To order replacement parts, please supply the part number, the quantity, and the description of each part desired.

## Understanding Reference Numbers

Each identified part in an illustration has a reference number. The reference number for a part also appears in the parts list, along with other information about the part.

This catalog uses two special reference number formats, one to indicate parts in a service assembly and another to indicate the quantity of a given part in an illustration.

## Service Assembly Reference Numbers

Parts in service assemblies have reference numbers in the form a:b. The a represents the reference number of the entire service assembly and the b represents a sequential number unique to each part within the service assembly.

For example, a wheel assembly might be identified by reference number 6, the tire by 6:1, the valve by 6:2, and the wheel by 6:3. When you order the assembly identified by reference number 6, you receive all parts identified by reference numbers 6:1, 6:2, and 6:3. However, you may also order any part individually. Reference numbers of this type appear in illustration and in parts lists.

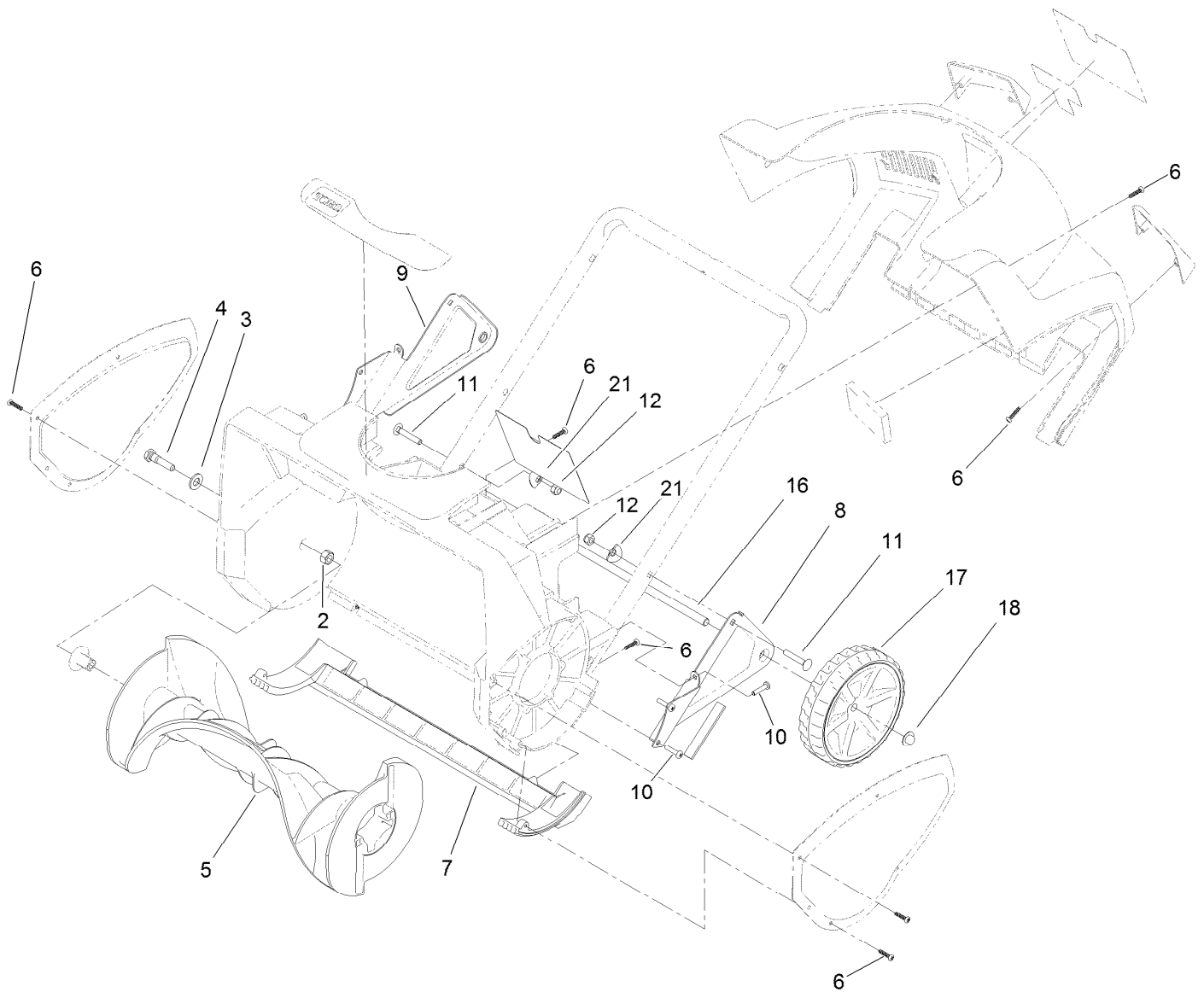
## Reference Numbers Indicating Quantity

In an illustration, if a reference number indicates more than one part, the reference number has the form nX y. The n represents the quantity of the part, the X is the multiplication symbol, and the y represents the reference number.

For example, in an illustration, the reference number 2X 37 means that two of the parts identified by reference number 37 are indicated.

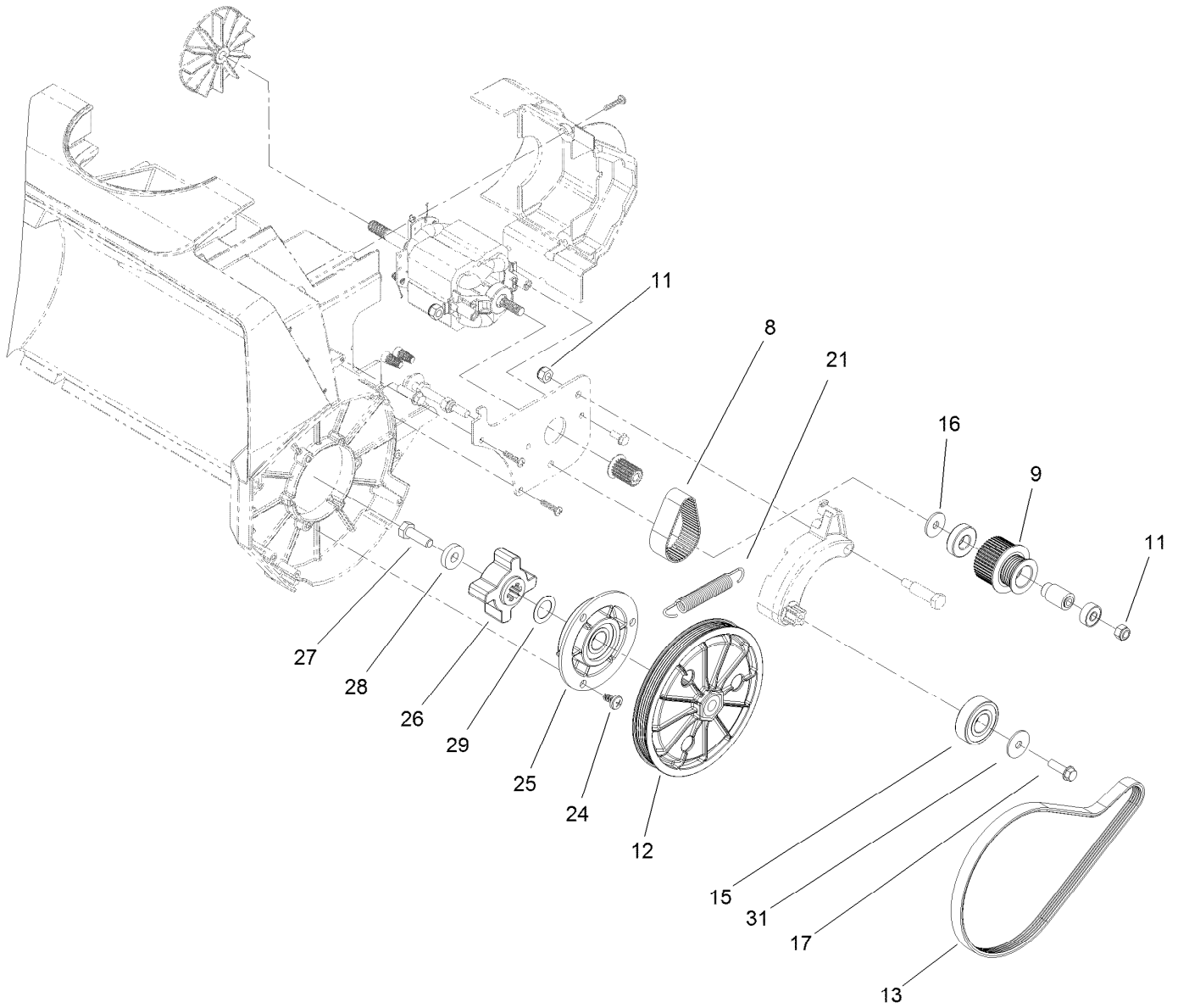
# Contents

- Frame Assembly..... 4
- Idler and Pulley Assembly..... 5
- Chute Assembly..... 6
- Handle Assembly..... 7



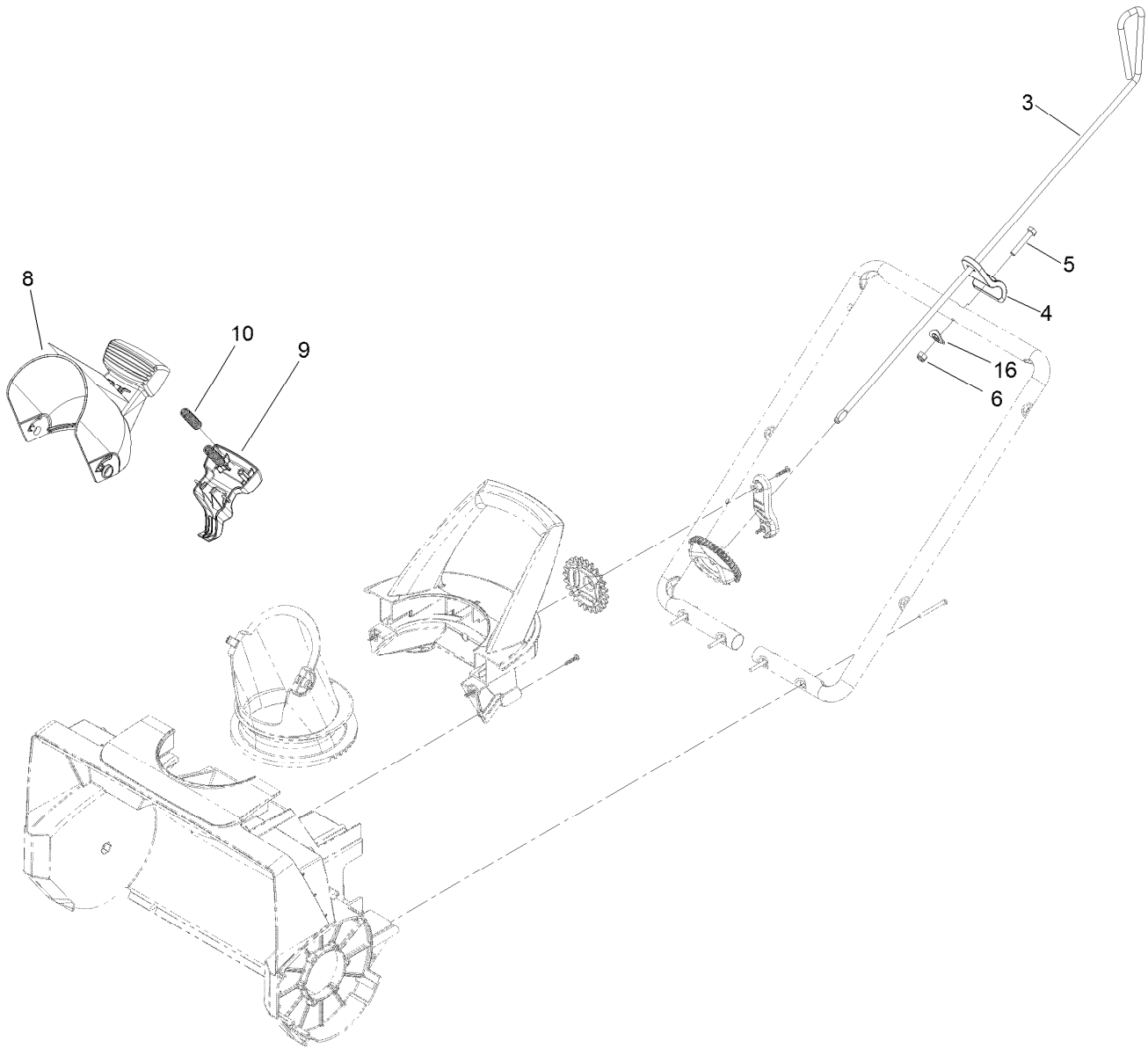
## Frame Assembly

<i>Ref.</i>	<i>Part Number</i>	<i>Qty.</i>	<i>Description</i>
2	32153-11	1	Nut-Lock
3	3256-80	1	Washer-Plain
4	38-8211	1	Pin-Rotor
5	117-8775	1	Rotor ASM
6	94-4496	18	Screw-PPH
7	117-2840	1	Scraper
8	114-9194-03	1	Bracket-Wheel, LH
9	114-9195-03	1	Bracket-Wheel, RH
10	32144-36	6	Screw-PPH
11	108-0988	2	Screw-CARR
12	3296-73	2	Nut-Lock, NI
16	114-9208-03	1	Axle-Wheel
17	117-2306	2	Wheel ASM
18	3290-320	2	Nut-Push
21	107-3844	2	Washer



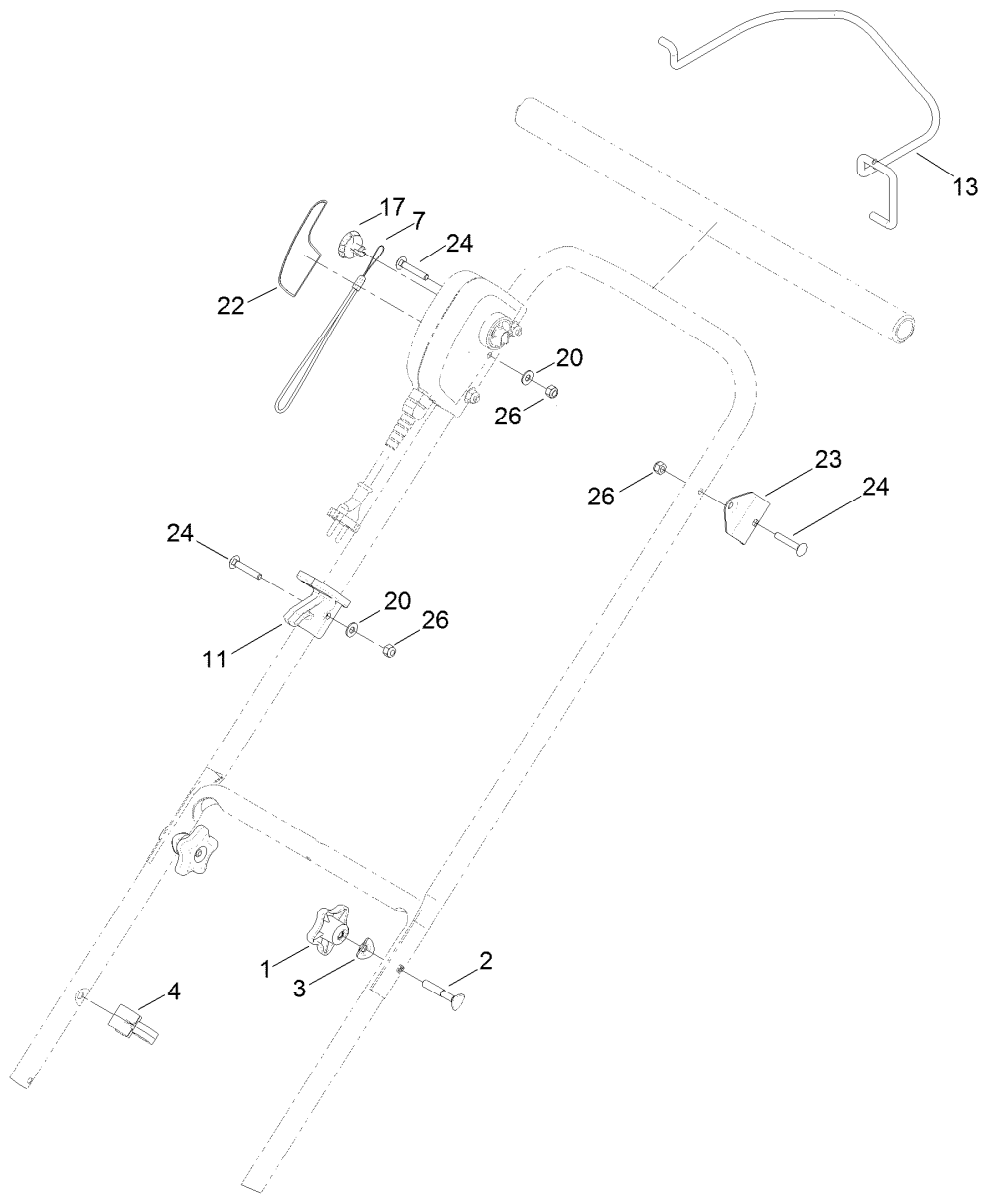
## Idler and Pulley Assembly

<i>Ref.</i>	<i>Part Number</i>	<i>Qty.</i>	<i>Description</i>	<i>Ref.</i>	<i>Part Number</i>	<i>Qty.</i>	<i>Description</i>
8	73-0160	1	Belt-Pulley, Idler/Driver	21	117-2804	1	Spring-Idler
9	117-8770	1	Idler Pulley ASM	24	105-6968	3	Screw-Seat, Switch
11	3296-73	2	Nut-Lock, NI	25	117-2887	1	Pillow Block ASM
12	117-8763	1	Pulley ASM	26	117-8762	1	Coupler-Pulley
13	115-1192	1	Belt-Drive	27	117-2888	1	Screw-HH
15	38-7820	1	Bearing-Ball	28	27-9560	1	Spacer
16	3256-67	1	Washer	29	7-4650	1	Washer-Plain
17	46-8091	1	Screw-HWH	31	114-9049	1	Washer-Flat



## Chute Assembly

<i>Ref.</i>	<i>Part Number</i>	<i>Qty.</i>	<i>Description</i>
3	114-9240-03	1	Rod-Control, Chute
4	114-9241	1	Guide-Rod, Chute
5	321-51	1	Screw-HH
6	3296-73	1	Nut-Lock, NI
8	114-9038	1	Chute Deflector ASM
9	117-2314	1	Trigger-Deflector
10	136-7136	2	Spring-Compression
16	107-3844	1	Washer



## Handle Assembly

Ref.	Part Number	Qty.	Description
1	117-5976	2	Knob-Handle
2	112-8876	2	Screw-Handle
3	107-3844	2	Washer
4	114-7988	1	Guide-Cable
7	117-2878	1	Cord-Key
11	125-0504	1	Lock-Cord
13	119-9842-03	1	Bail
17	119-9835	1	Key-Bail
20	3256-1	3	Washer-Flat
22	119-9841	1	Decal-Operation
23	119-9848-03	1	Bracket-Bail
24	108-0988	4	Screw-CARR
26	3296-73	4	Nut-Lock, NI



**Count on it.**