



Enhancement Kit

Part No. 99-0297

INSTALLATION INSTRUCTIONS

Loose Parts

Note: Use the chart below to identify parts for assembly.

DESCRIPTION	QTY.	USE
Remote Filter	1	Install Remote Filter Kit
Shear Bolt	1	Install Shear Bolt Kit
Left Hand Bagger Baffle	1	Install New Bagger Baffles
Right Hand Bagger Baffle	1	
Left Hand Discharge Baffle	1	Install New Discharge Baffles
Right Hand Discharge Baffle	1	
Left Hand Recycler Baffle	1	Install New Baffles for Recycler
Right Hand Recycler Baffle	1	
Retainer Nuts	14	Install New Retainer Nuts
Hex Head Screws	14	
Washers	14	
Idler Arm Pivot Bolt	1	Install Idler Arm Pivot Bolt
Dampers	2	Install Dampers
Hopper Back Plate	2	Install Hopper Back Plate
Washers	3	Install new washer on hopper pegs
Rivets	4	Install new rivets
Washer	1	Install Washer on Blower Pulley for 25hp Units

Installing Remote Filter Kit

Refer to the enclosed kit and instructions for installing this kit.

Installing Shear Bolt Kit

Refer to the enclosed kit and instructions for installing this kit.

Installing Baffles

You will need to remove baffles in order to install all retaining nuts. Which baffles you have to remove depends if you are in recycling or bagging mode.

Stop the engine, set the parking brake and remove the key.

Tilting the deck up will make it easier to install baffles. See tilting deck on page 8.

Stop the engine, set the parking brake and remove the key.

Installing New Bagger Baffles

The bagger baffles are used in the bagging mode. When in bagging mode, you need to remove the old baffles in order to install new baffles.

1. Locate the left and right bagger baffles. Remove carriage bolts and lock nuts that attach the baffles to the deck (Fig. 1).
2. Install new retainer nuts. See Installing New Retainer Nuts on page 3.
3. Install new bagger baffles using new washers and hex head screws (Fig. 1)

Installing New Discharge Baffles

The discharge baffles are used in the bagging mode. When in bagging mode, you need to remove the old baffles in order to install new baffles.

1. Locate the left and right discharge baffles. Remove carriage bolts and lock nuts that attach the baffles to the deck (Fig. 1).
2. Install new retainer nuts. See Installing New Retainer Nuts on page 3.
3. Install new discharge baffles using new washers and hex head screws and existing carriage bolt (Fig. 1).

Note: Remember to reuse the carriage bolt (Item 6) on the discharge baffle (Fig. 1).

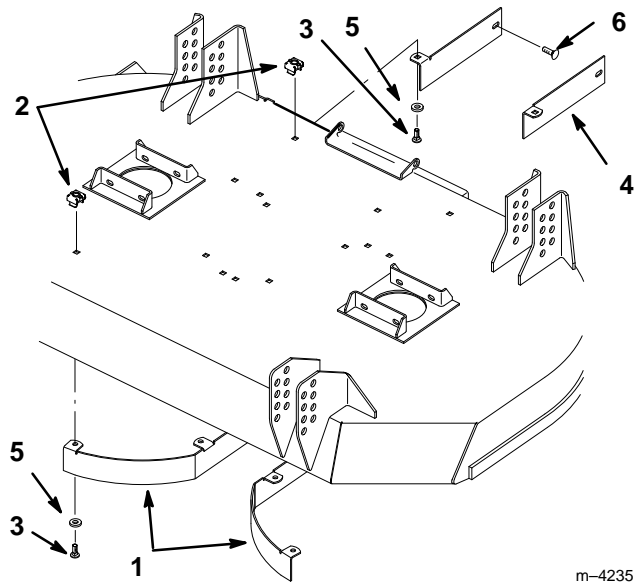


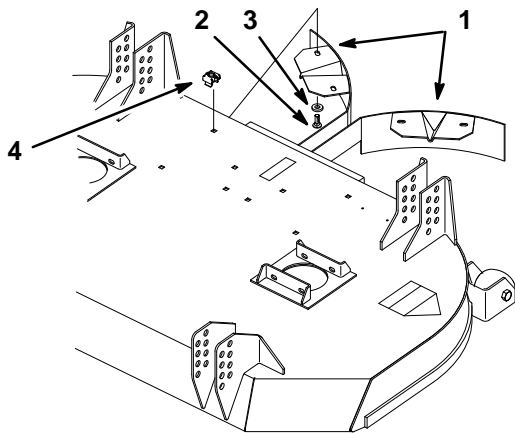
Figure 1

- | | |
|-------------------|-----------------------|
| 1. Bagger baffle | 4. Discharge baffle |
| 2. Retainer Nut | 5. Washer (.344x.688) |
| 3. Hex Head Screw | 6. Carriage Bolt |

Installing New Baffles for Recycler

The recycler baffles are used in the recycling mode. When in recycling mode, you need to remove the old baffles in order to install new baffles.

1. Locate the left and right recycler baffles. Remove carriage bolts and lock nuts that attach the baffles to the deck (Fig. 2).
2. Install new retainer nuts. See Installing New Retainer Nuts on page 3.
3. Install new recycler baffles using new washers and hex head screws (Fig. 2).



M-4236

Figure 2

- | | |
|---------------------|-----------------------|
| 1. Recycler® baffle | 3. Washer (.344x.688) |
| 2. Hex Head Screw | 4. Retainer Nut |

Installing New Retainer Nuts

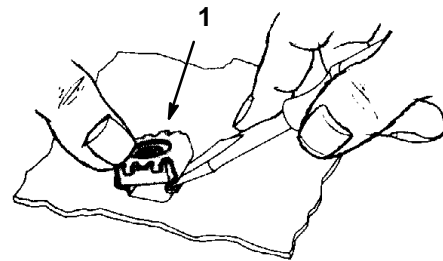
The retainer nuts in this kit will make the process of changing between recycler and bagging modes quicker and easier.

Note: All retaining nuts must be installed in place of each lock nut used to fasten baffles to deck.

Use baffles for a template to locate where retainer nuts are used.

1. If your foot rest is bolted to the deck frame remove it. If it is not, proceed to step 2.

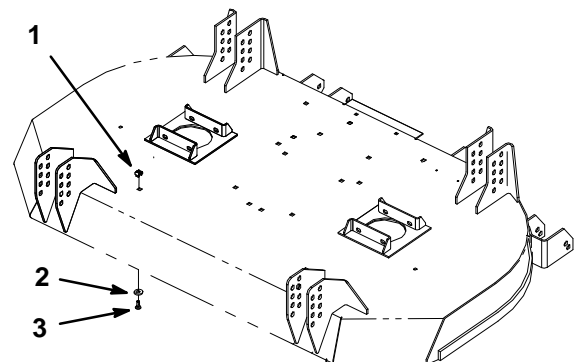
2. Remove baffles if not already done so.
3. On the top surface of the deck, install one retaining leg into the the square opening of the deck (Fig. 3 and 4).
4. Push a screw driver into the other leg and insert retaining nut into square hole (Fig. 3).
5. Install baffles using hex head screws and washers (Fig. 4).
6. Install all hex head screws and washers into unused retainer nuts (Fig. 4).
7. When all of the retainer nuts are installed, then reinstall footrest to deck frame.



M-4234

Figure 3

1. Retainer Nut



M-4233

Figure 4

- | | |
|-----------------|-------------------|
| 1. Retainer Nut | 3. Hex Head Screw |
| 2. Washer | |

Installing New Idler Arm Pivot Bolt

The new bolt will prevent the spring to go past bolt or center and loose tension on spring.

1. Stop the engine, set the parking brake and remove the key.
2. Locate idler arm. Remove spring from idler arm. (Fig. 5).
3. Remove bolt from pivot. Save all hardware except for the bolt (Fig. 5).
4. Install new bolt and hardware (Fig. 5).

Note: Notice how the bolt is installed. The head must be toward the inside of the mower (Fig. 5).

5. Reinstall spring.

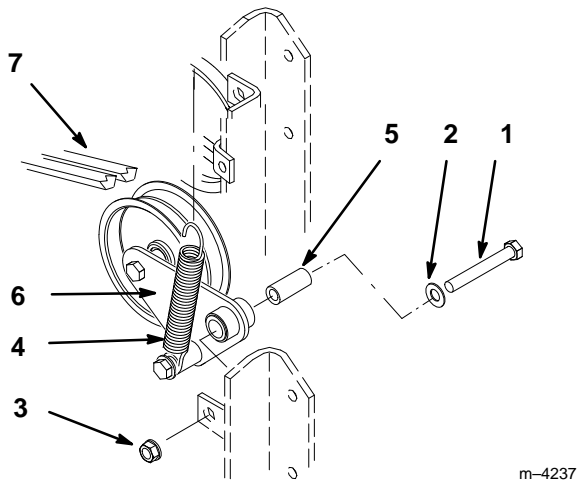


Figure 5

- | | |
|------------|--------------------|
| 1. Bolt | 4. Spring |
| 2. Washer | 5. Spacer |
| 3. Locknut | 6. Idler Arm Pivot |

Installing New Dampers

The new dampers provide for less aggressive operation. This is useful for uneven terrain and new operators. The old dampers provide a more aggressive operation and experienced operators may prefer them.

1. Stop the engine, set the parking brake and remove the key.
2. Tilt seat forward. Dampers are located under seat (Fig. 6).
3. Remove cotter pins, clevis pins, spacer and damper (Fig. 6).
4. Install new damper and install with existing cotter pins, clevis pins and spacer (Fig. 6).

Note: Notice the position of the spacer. It must be toward the outside of the machine.

5. Repeat for opposite damper.

Note: Old dampers can be reused if desired. Dampers must be used in matching pairs.

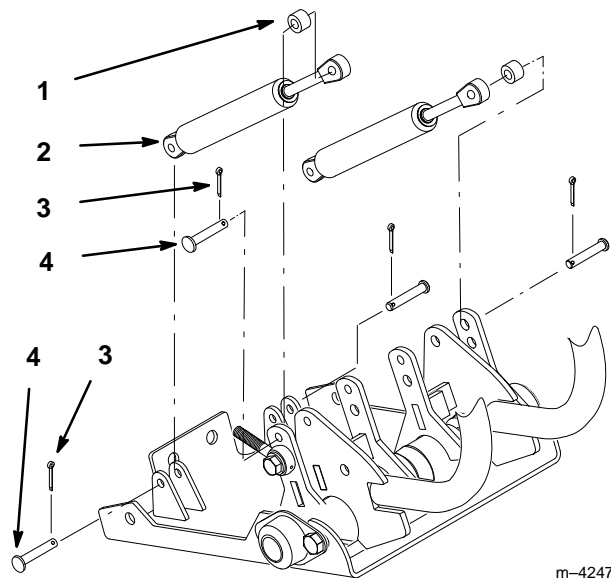


Figure 6

- | | |
|-----------|---------------|
| 1. Spacer | 3. Cotter Pin |
| 2. Damper | 4. Clevis Pin |

Installing New Collection Bin Back Plate

The new plates will increase support for the latches.

1. Unlatch and open rear lid on grass collection bin.
2. Remove existing bolts, washers and latch (Fig. 7).

Note: It may be necessary to remove the bin flange in order to get proper access to bolts and washers (Fig. 7).

3. Discard the washers and replace with back plate. Tighten bolts, back plate and latch (Fig. 7).
4. Repeat for latch on other side of collection bin.

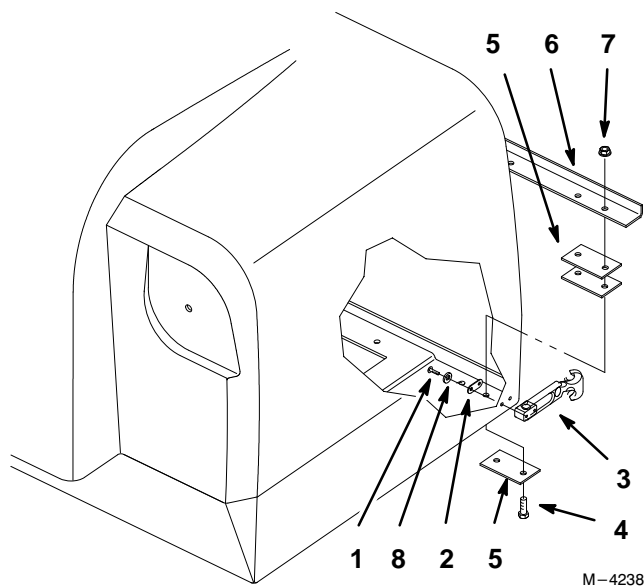


Figure 7

- | | |
|-------------------|---------------------|
| 1. Bolt | 5. Spacer |
| 2. Back Plate | 6. Bin Flange |
| 3. Latch | 7. Nut |
| 4. Hex Head Screw | 8. Washer (Discard) |

Installing New Washer on Collection Bin Pegs

The new washers will increase support for the latch pegs.

1. Unlatch and open rear lid on grass collection bin.
2. Remove existing bolt, washer and latch peg (Fig. 8).
3. Replace existing washer with new washer. Tighten bolt, washer and latch peg (Fig. 8).
4. Repeat for other two latch pegs on collection bin (Fig. 8).

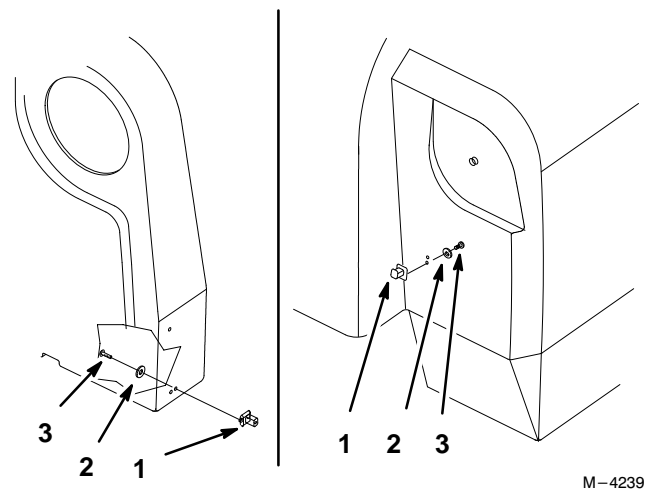


Figure 8

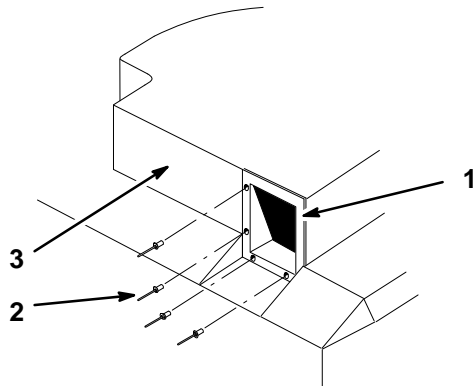
- | | |
|-----------------------|----------|
| 1. Latch Peg | 3. Screw |
| 2. Washer (.216x.750) | |

Installing New Rivets on Grass Collection Bin

Check to see if your metal chute is loose. If it is loose, replace the rivets.

1. Remove any existing rivets from metal chute (Fig. 9).
2. Install new rivets. (Fig. 9).

Note: You may have to repeat actuation of a manual riveting tool until the mandrel breaks and rivet is set.



M-4240

Figure 9

- | | |
|----------------|-------------------|
| 1. Metal Chute | 3. Collection Bin |
| 2. Rivets | |

Installing New Washer on Blower Pulley

Note: This procedure is for mowers with 25hp engines only.

1. Stop the engine, set the parking brake and remove the key.
2. Push up and hold the spring loaded idler arm, behind blower to relax pressure on blower belt, and pin to engine frame (Fig. 11).
3. Remove belt (Fig. 11).
4. Loosen bolts that hold blower to frame (Fig. 10).

Note: It may be necessary to fully remove the bolts.

5. Remove the bolt and washer on the blower pulley (Fig. 11).
6. Discard washer and reinstall new washer and bolt (Fig. 11).

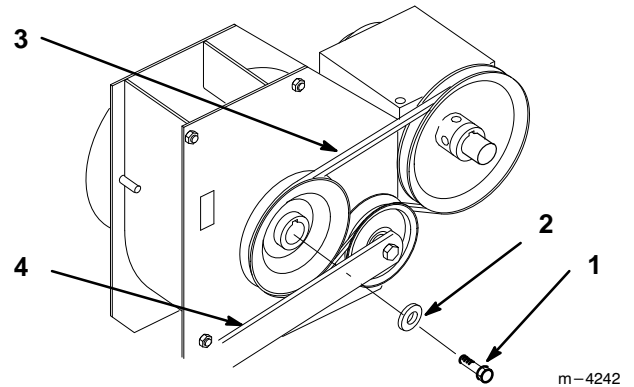


Figure 11

- | | |
|-----------|----------------------------|
| 1. Screw | 3. Belt |
| 2. Washer | 4. Spring Loaded Idler Arm |

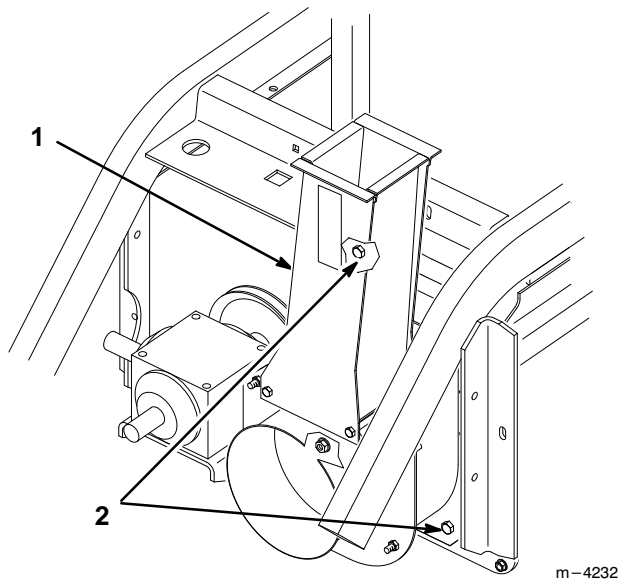


Figure 10

- | | |
|--------------------|----------|
| 1. Blower assembly | 2. Bolts |
|--------------------|----------|

Tilting the Mower

The mower can be tilted up for ease of service.

To Raise Mower

1. Turn engine off, set the parking brake and check that PTO cover is down against deck (Fig. 12).
2. Lift on the mower carrier frame to release weight on latch pin and pull out on latch pin to release (Fig. 12). Lower rear of mower onto anti-scalp rollers. Repeat on the other side.
3. Return the pins to the spring loaded (down) position.

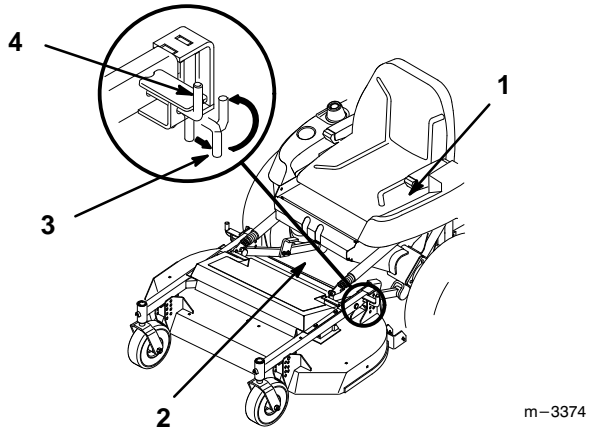


Figure 12

- | | |
|------------------|---------------|
| 1. Parking brake | 3. Latch pin |
| 2. PTO cover | 4. Notch—open |
-

4. Standing in front of the mower, lift up and push rearward on front to raise mower (Fig. 13).
5. Raise mower until it contacts stops and latch pins snap into locked position.

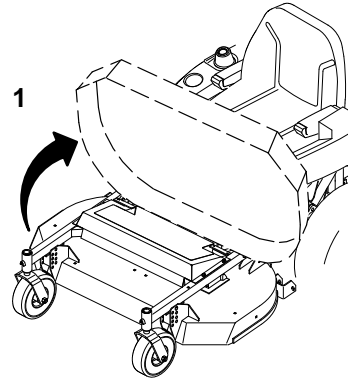


Figure 13

1. Mower up
-