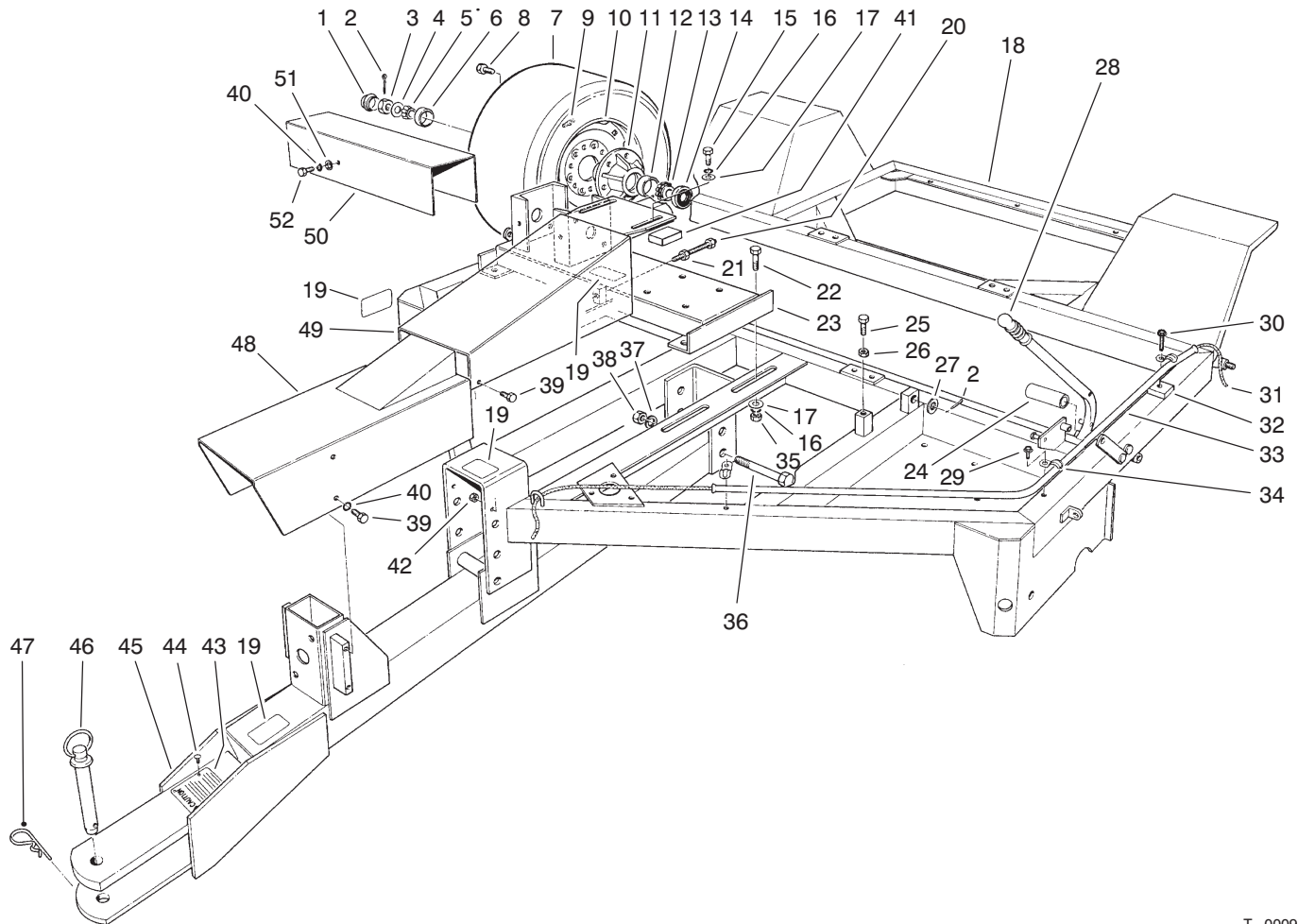
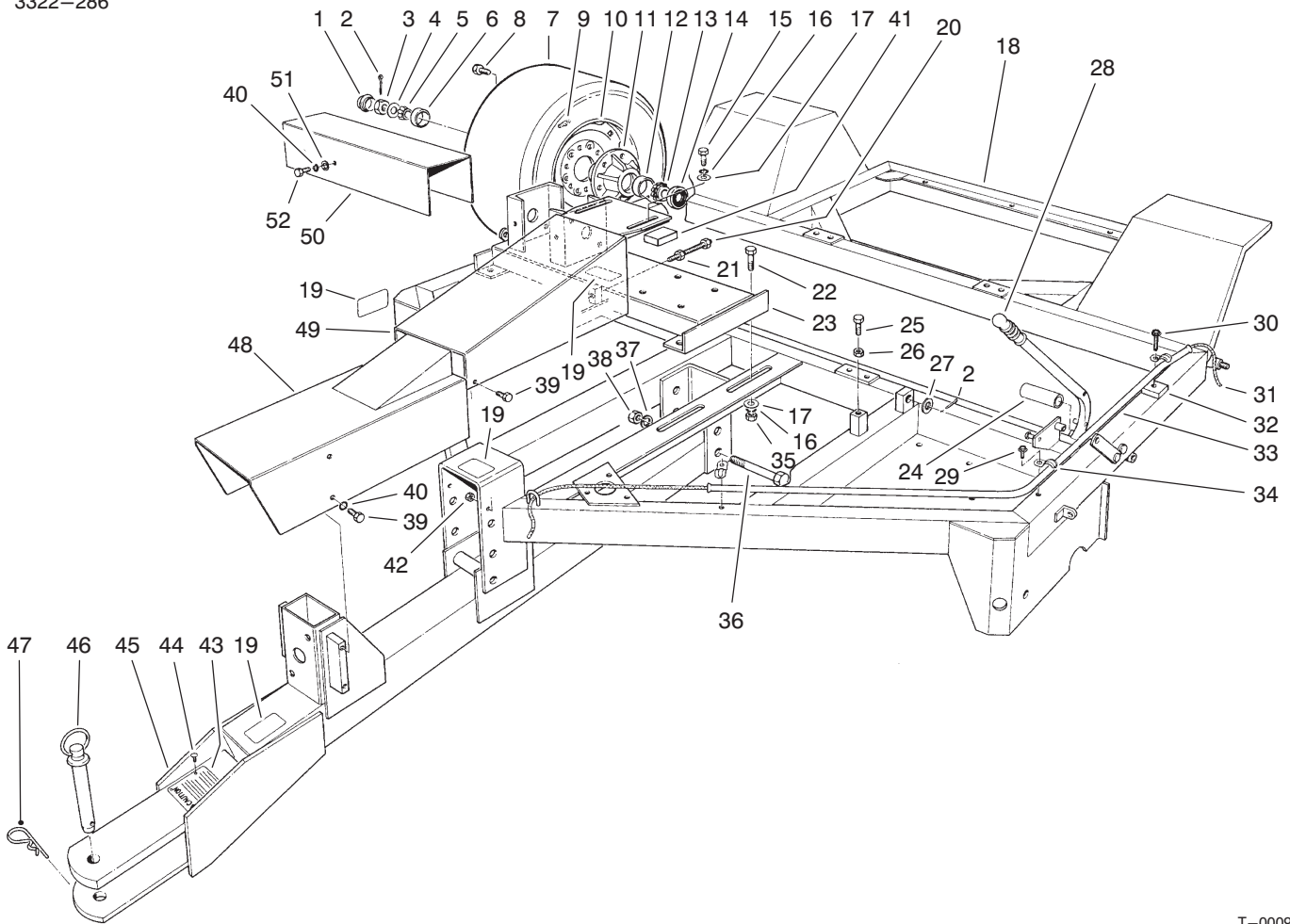



MODEL NO. 07050-90001 & UP
MODEL NO. 07052-90001 & UP
PARTS
CATALOG
66" RAKE-O-VAC® SWEEPER


T-0009

FRAME ASSEMBLY (Model No. 07052)

Ref. No.	Part No.	Description	No. Used	Ref. No.	Part No.	Description	No. Used
1	242-55	Cap-Hub	2	18	13-6120	Frame	1
2	3272-17	Pin-Cotter	3	19	67-5360	Decal-Caution	4
3	32136-1	Nut-Slotted	2	20	13-6240	Rod-Adjustment	1
4	3256-29	Washer-Flat	2	21	3218-6	Nut-Jam	1
5	254-62	Cone-Bearing	2	22	325-5	Screw-HH	4
6	254-61	Cup-Bearing	2	23	13-6000	Base-Box, Gear	1
7	93-0181	Tire	2	24	3-3107	Hose	1
8	217-103	Bolt-Wheel	12	25	323-8	Screw-HH	1
9	232-27	Stem-Valve	2	26	3218-3	Nut-Jam	1
10	93-0182	Asm-Wheel	2	27	3256-28	Washer-Flat	1
11	242-54	Wheel-Hub (Incl. Ref. #6 & 12)	2	28	235-15	Grip-Handle	1
12	254-66	Cup-Bearing	2	29	32104-95	Screw-Self-Tapping	2
13	254-65	Cone-Bearing	2	30	32104-96	Screw-Self-Tapping	1
14	253-127	Seal	2	31	20-9580	Rope-Latch	1
15	325-3	Screw-HH	2	32	13-6910	Spacer-Guide, Rope	1
16	3253-7	Washer-Lock	6	33	13-6890	Guide-Rope	1
17	3256-26	Washer-Flat	6	34	2412-40	Clamp-Conduit	3
				35	3217-9	Nut-Hex	4

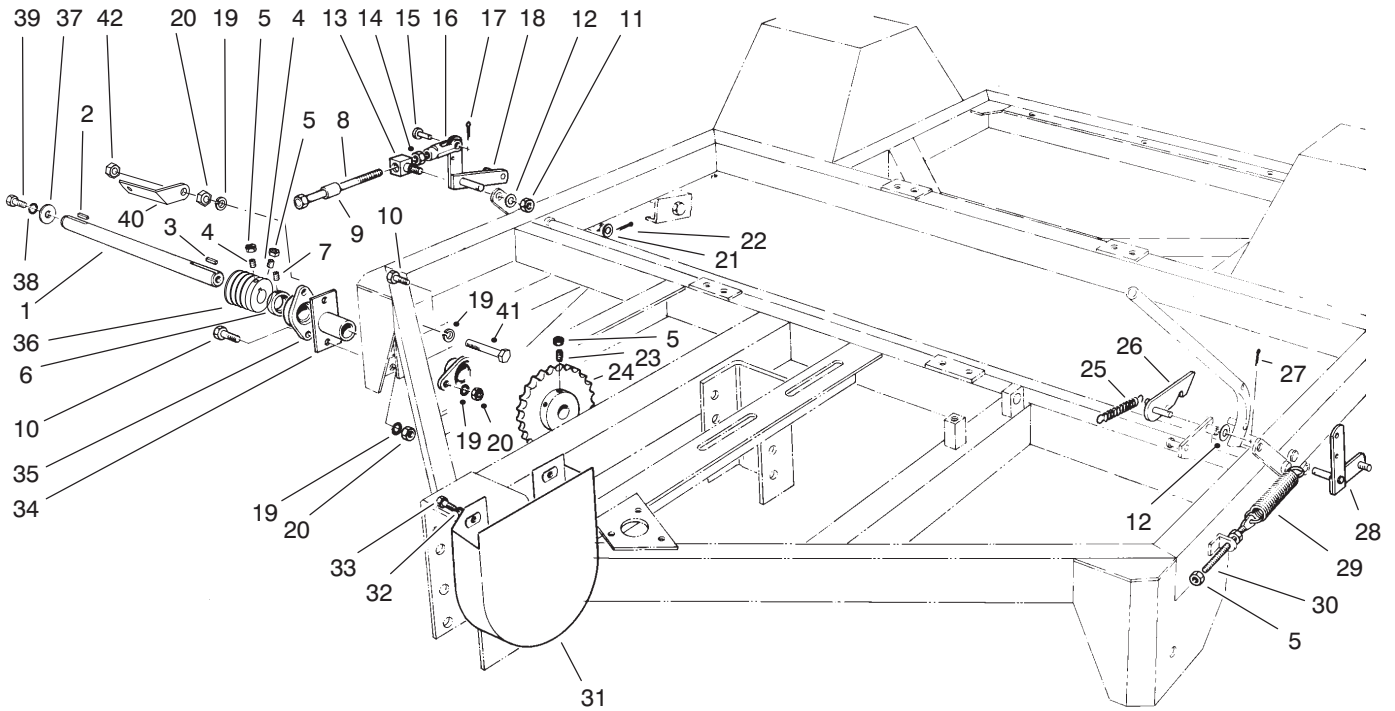


T-0009

FRAME ASSEMBLY (Model No. 07052)

Ref. No.	Part No.	Description	No. Used
36	328-23	Bolt-HH	2
37	3253-9	Washer-Lock	2
38	3217-12	Nut-Hex	2
39	323-2	Screw-HH	6
40	3253-21	Washer-Lock	6
41	93-7709	Pad	1
42	32153-2	Nut-Lock	2
43	13-7460	Plate-Caution, Hitch	1
44	3259-15	Screw-Drive	4
45	13-4310	Tongue	1

Ref. No.	Part No.	Description	No. Used
46	13-6200	Pin-Hitch (Incl. Ref. #47)	1
47	3290-343	Pin-Hair, Cotter	1
48	13-5870	Shield-Front	1
49	13-5880	Shield-Shaft, Drop	1
50	13-5790	Shield-Shaft, Side	1
51	3256-24	Washer-Flat	4
52	325-5	Screw-HH	4

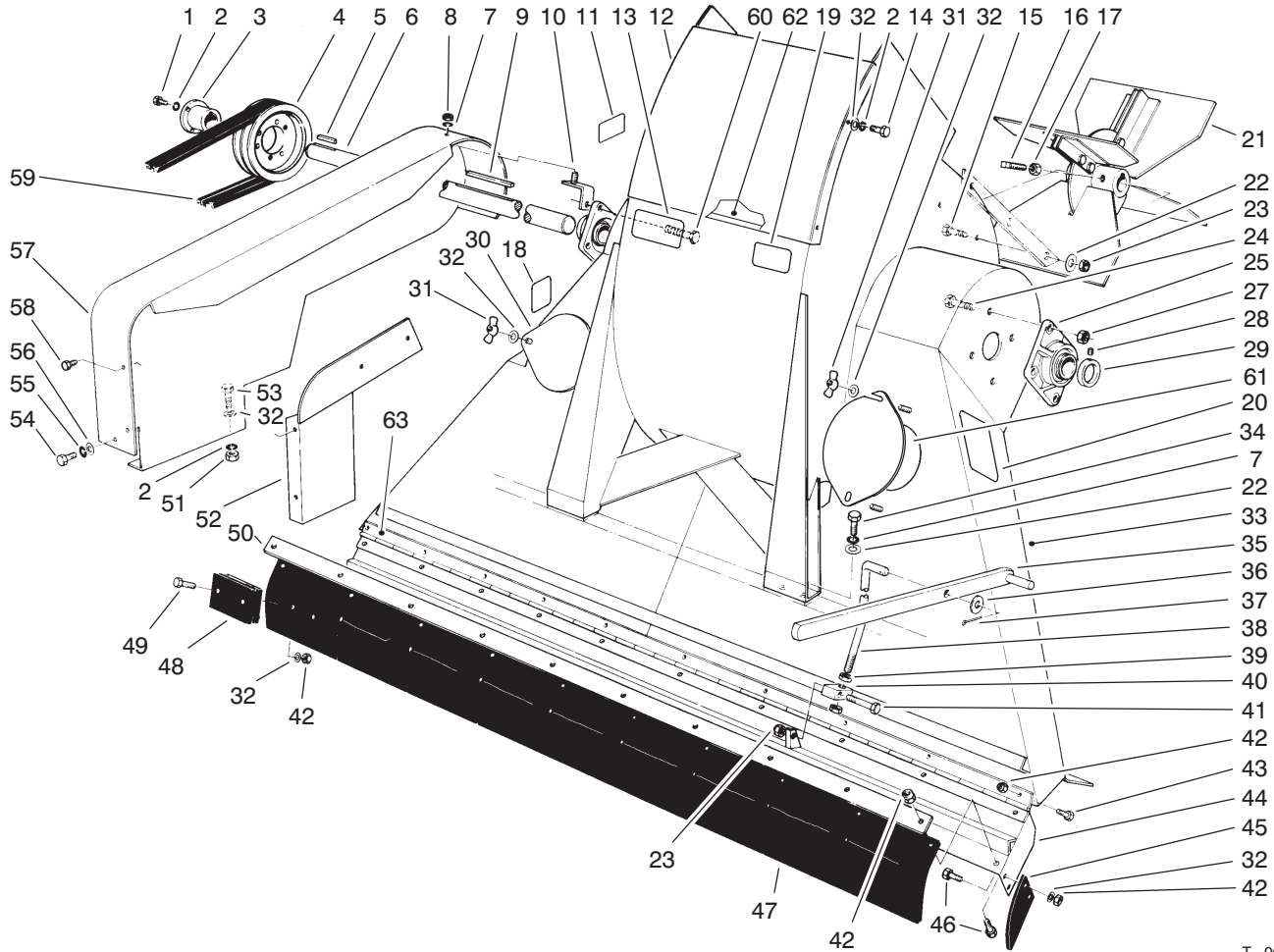


T-0011-1

JACKSHAFT & LIFTING MECHANISM (Model No. 07052)

Ref. No.	Part No.	Description	No. Used
1	93-4032	Shaft-Jack	1
2	68-3220	Key-Square	1
3	67-7490	Key-Square	1
4	3243-6	Screw-Set	2
5	3218-3	Nut-Jam	8
6		Collar-Lock	2
7		Screw-Set	2
8	13-6260	Screw	2
9	13-5520	Spacer	2
10	324-7	Screw-HH	3
11	32153-2	Nut	2
12	3256-24	Washer-Flat	2
13	13-0100	Block-Pivot	2
14	3219-3	Nut-Hex.	2
15	283-2	Pin-Clevis	2
16	282-22	Clevis	2
17	3272-10	Pin-Cotter	2
18	93-4440	Bell Crank-Lift, RH	1
19	3253-6	Washer-Lock	5
20	3217-8	Nut-Hex.	4
21	3256-28	Washer-Flat	2
22	3272-22	Pin-Cotter	2

Ref. No.	Part No.	Description	No. Used
23	3247-6	Screw-Set	2
24	13-4880	Sprocket	1
25	13-0480	Spring	1
26	13-3990	Handle-Trip	1
27	3272-10	Pin-Cotter	1
28	13-5500	Bell Crank-Lift, LH	1
29	13-0050	Spring	2
30	13-5530	Rod-Adjustment, Spring	2
31	13-4490	Guard-Sheave	1
32	3253-4	Washer-Lock	2
33	322-7	Screw-HH	2
34	63-5210	Spindle-Driveside	1
35	56-6230	Bearing (Incl. Ref. #6 & 7)	2
36	93-4033	Pulley-Driver	1
37	13-3710	Washer-Special	1
38	3253-3	Washer-Lock	1
39	321-4	Screw-HH	1
40	93-4438	Bracket-Belt Guard	1
41	324-10	Screw-HH	1
42	3296-48	Nut-Lock	1

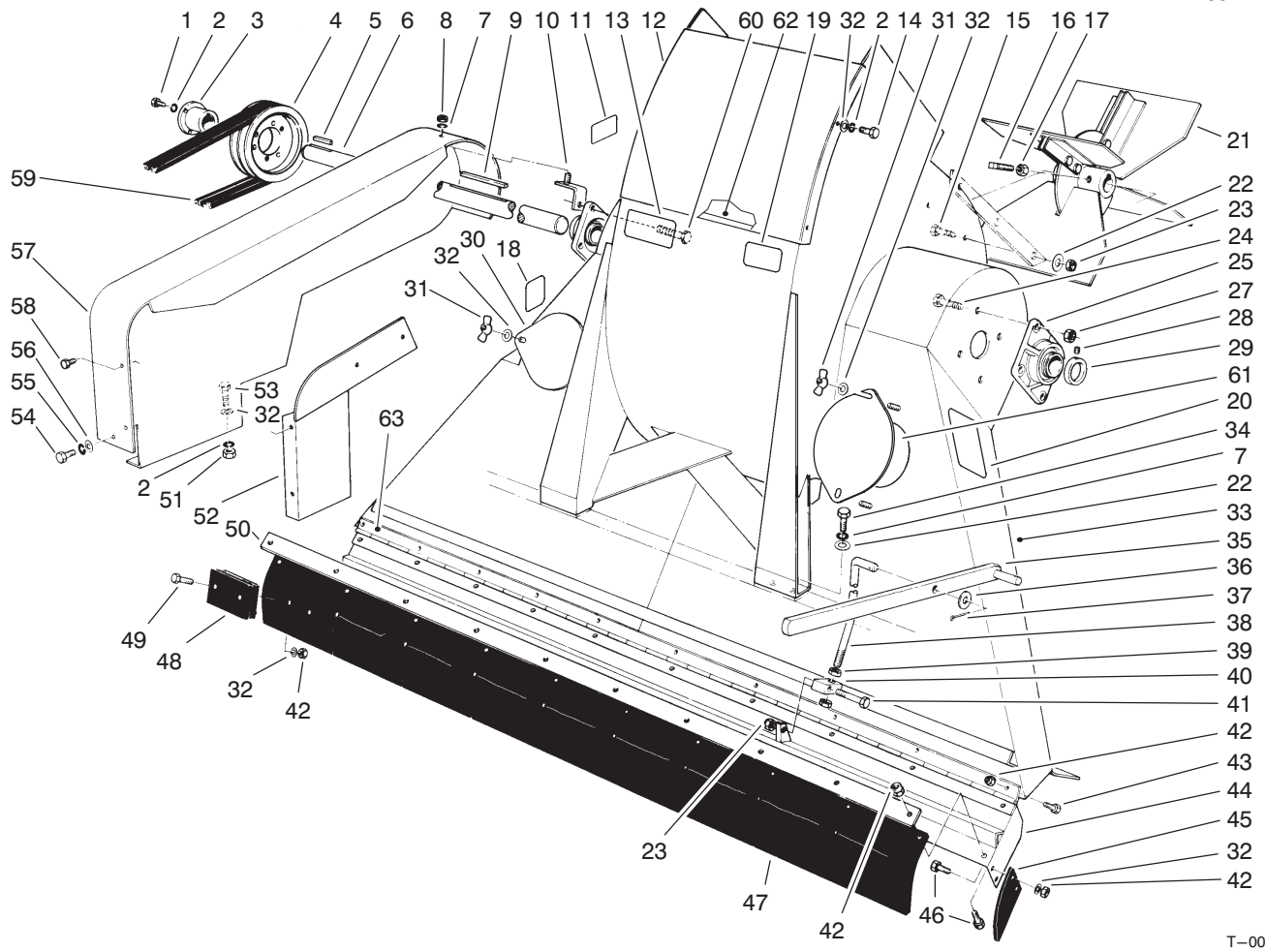


T-0013-3

BLOWER & THROAT ASSEMBLY (Model No. 07052)

Ref. No.	Part No.	Description	No. Used
1	321-13	Screw-HH	3
2	3253-3	Washer-Lock	9
3	13-6070	Bushing (Incl. Ref. #1 & 2)	1
4	13-6030	Pulley	1
5	13-2240	Key-Square	1
6	13-3790	Shaft-Fan	1
7	3253-21	Washer-Lock	9
8	3217-7	Nut-Hex	1
9	13-2810	Key-Square	1
10	13-3350	Bracket-Mounting	1
11	67-5360	Decal	1
12	13-3850	Plate-Blower Access	1
13	13-6410	Decal	1
14	321-4	Screw-HH	4
15	323-7	Screw-HH	6
16	3244-14	Screw-Set, Square Hd.	4
17	3218-5	Nut-Hex.	4
18	92-8309	Decal-Warning	1
19	93-7307	Decal-Warning	1
20	93-4041	Decal-Op. Instructions	1
21	13-3420	Asm-Fan	1
22	3256-24	Washer-Flat	14
23	3296-39	Nut-Lock	7
24	325-6	Screw-HH	7
25	56-6220	Bearing (Incl. Ref. #28 & 29)	2

Ref. No.	Part No.	Description	No. Used
27	32153-5	Nut-Lock	8
28		Screw-Set	2
29		Collar-Locking	2
30	13-1420	Cover-Inspection	1
31	32103-12	Nut-Wing	4
32	3256-22	Washer-Flat	32
33	13-6280	Blower and Throat (Incl. Ref. #2,11-14,18-20, 30-32 & 61-62)	1
34	323-6	Screw-HH	8
35	13-6390	Handle-Flap	1
36	3256-27	Washer-Flat	1
37	3272-12	Pin-Cotter	1
38	13-6360	Rod-Lift, Flap	1
39	3218-6	Nut-Jam	2
40	13-0330	Block-Pivot	1
41	323-9	Screw-HH	1
42	3296-42	Nut-Lock	52
43	321-3	Screw-HH	20
44	95-3112	Flap-Lower	1
45	13-3130	Flap-End	2
46	321-5	Screw-HH	14
47	13-4700	Flap-Rubber (Incl. Ref. #32, 42, 48 & 49)	1
48	13-4560	Weight-Flap	18
49	321-8	Screw-HH	18
50	13-1390	Retainer-Flap	1

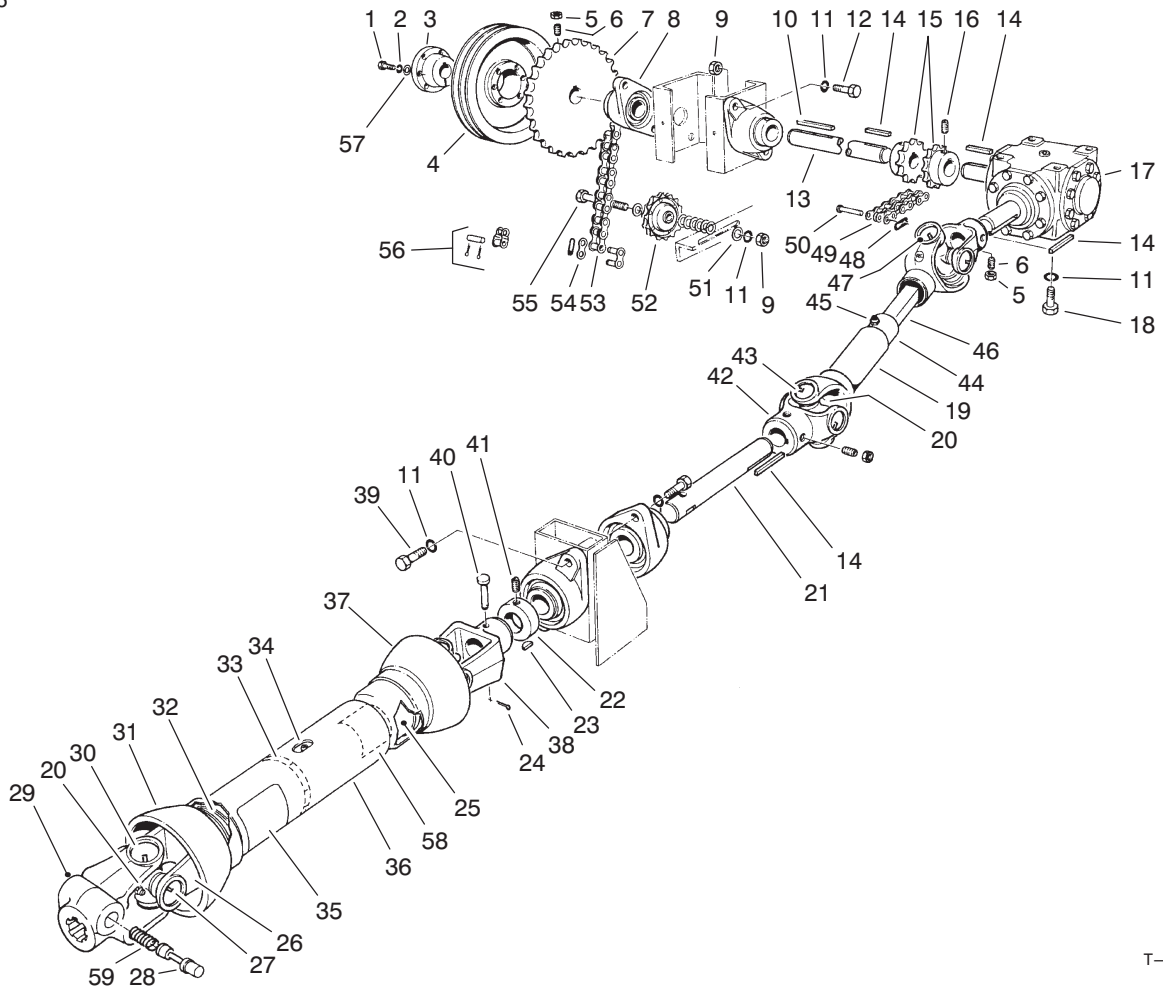


T-0013-3

BLOWER & THROAT ASSEMBLY (Model No. 07052) (Continued)

Ref. No.	Part No.	Description	No. Used
51	3217-5	Nut-Hex.	2
52	13-6090	Cover-Guard, Side	1
53	321-4	Screw-HH	2
54	322-1	Screw-HH	1
55	3253-4	Washer-Lock	1
56	3256-23	Washer-Flat	1
57	13-4800	Guard-Belt	1
58	32104-109	Screw-HH	4

Ref. No.	Part No.	Description	No. Used
59	13-2640	Belt	1
60	325-7	Screw-HH	1
61	93-4020	Cover-Inspection	1
62	93-7708	Strip-Sealing	1
63	95-3114	Hinge-Continuous	1

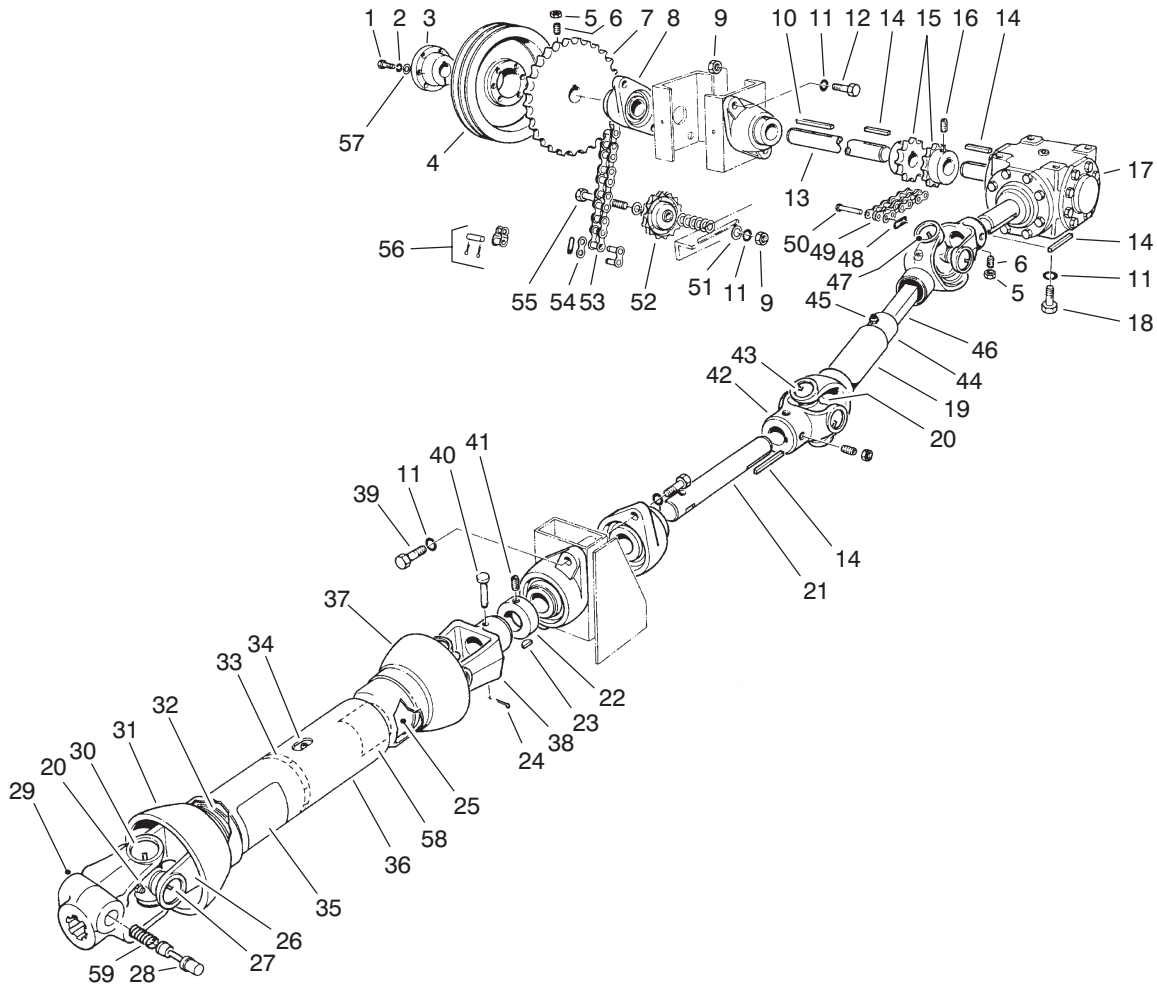


T-0008

DRIVE SHAFTS & GEAR BOX (Model No. 07052)

Ref. No.	Part No.	Description	No. Used
1	322-7	Screw-HH	3
2	3253-4	Washer-Lock	3
3	13-6050	Bushing (Incl. Ref. #1 & 2)	1
4	13-6020	Sheave	1
5	3218-3	Nut-Jam	6
6	3247-6	Screw-Set	6
7	13-6110	Sprocket	1
8	56-6250	Bearing (Incl. Ref. #22 & 41)	4
9	3217-9	Nut-Hex.	5
10	13-3720	Key-Square	1
11	3253-7	Washer-Lock	13
12	325-6	Screw-HH	4
13	13-5910	Shaft-Drive, Side	1
14	5-0738	Key-Square	4
15	13-6690	Coupling Half	2
16	3247-3	Screw-Set	4
17	70-2350	Gear Box-Complete	1
18	325-4	Screw-HH	4
19	42-1870	Asm-Rear Shaft (Incl. Ref. #20 & 42-47)	1
20	2115-80	Fitting-Grease	4
21	13-5900	Shaft-Drive, Front	1
22	251-246	Collar-Locking, Eccentric (Incl. Ref. #41)	4
23	3257-8	Key-Woodruff	1

Ref. No.	Part No.	Description	No. Used
24	3272-6	Pin-Cotter	1
25	42-2360	Asm-Yoke & Tube (Incl. Ref. #34 & 58)	1
26	42-2370	Yoke and Shaft	1
27	2115-79	Ring-Lock	8
28	42-2310	Pin-Quick Detach	1
29	42-2310	Yoke-Front (Incl. Ref. #28 & 59)	1
30	2115-88	Kit-Bearing & Cross (Incl. Ref. #20 & 27)	2
31	42-2380	Shield-Outer (Incl. Ref. #35)	1
32	92-1580	Kit-Bearing, Shield	2
33	42-2340	Centralizer-Guard	1
34	2115-85	Fitting-Grease	1
35	92-1582	Decal-Safety	1
36	42-1860	Asm-Front Shaft (Incl. Ref. #20, 25, 26, 29, 31-33, 35, 37-38, 58 & 60)	1
37	42-2350	Shield-Inner	1
38	2115-94	Yoke-Rear	1
39	325-5	Screw-HH	4
40	283-46	Pin-Clevis	1
41	2115-81	Screw-Set	8
42	2115-81	Yoke	2
43	2115-76	Kit-Center Parts	2
44	42-2290	Yoke and Tube	1



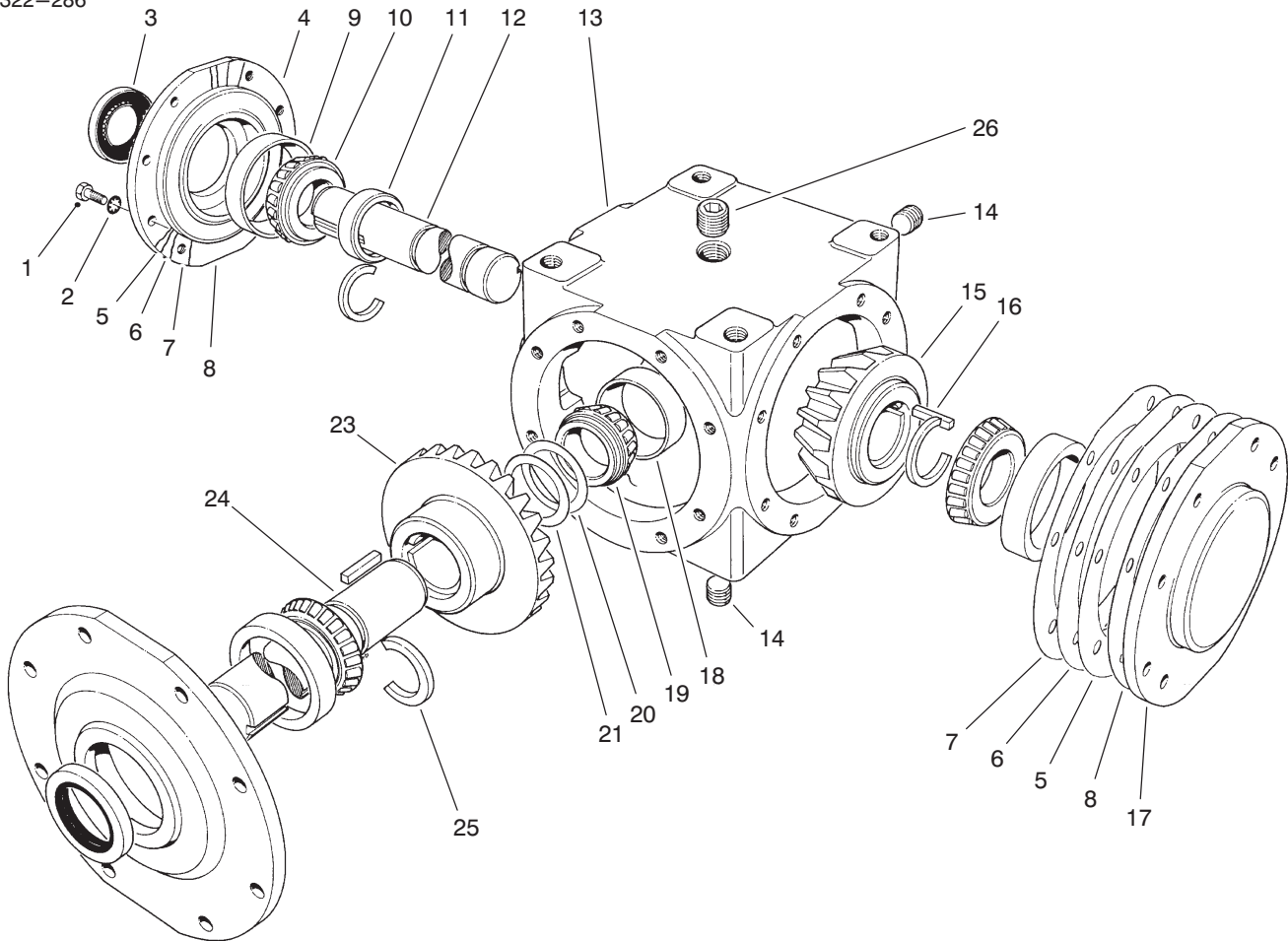
T-0008

DRIVE SHAFTS & GEAR BOX (Model No. 07052) (Continued)

Ref. No.	Part No.	Description	No. Used
45	302-2	Fitting-Grease	1
46	42-2300	Yoke and Shaft	1
47	2115-78	Ring-Lock	8
48		Clip-Pin, Connector	1
49	13-6680	Chain	1
50	13-6670	Pin-Connector (Incl. Ref.#48)	1
51	3256-26	Washer-Flat	8
52	13-4570	Sprocket-Idler	1

Ref. No.	Part No.	Description	No. Used
53	13-4590	Chain	1
54	2710-30	Link-Connecting	1
55	325-12	Screw-HH	1
56	2710-29	Link-Offset	1
57	3256-23	Washer-Flat	3
58	92-1581	Decal-Safety	1
59		Spring	1
*	92-1187	Kit-Quick Disconnect (Incl. Ref. # 28, & 59)	1

*Not Illustrated

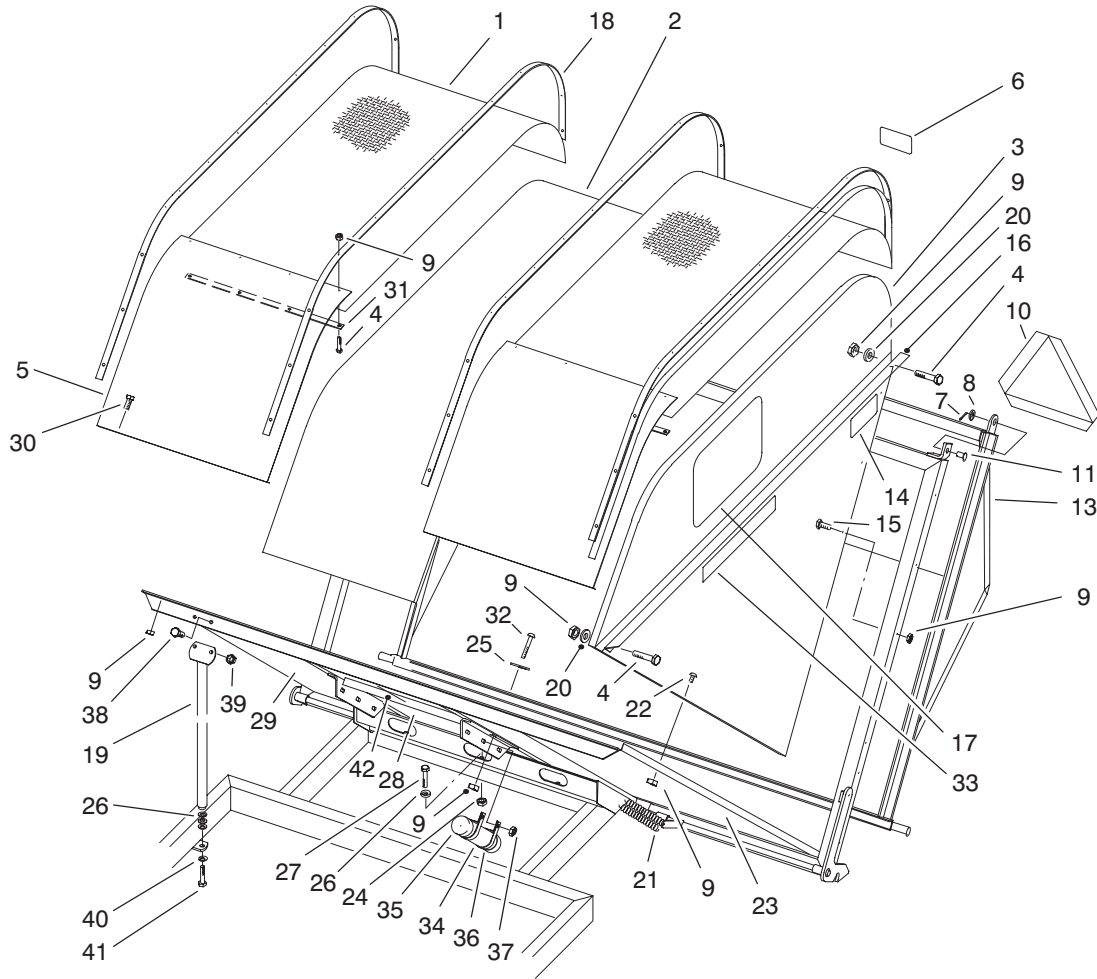


T-0014

GEAR BOX ASSEMBLY (Model No. 07052)

Ref. No.	Part No.	Description	No. Used
1	322-5	Screw-HH	24
2	3254-2	Washer-Lock	24
3	13-6520	Seal	2
4	70-2420	Cap	2
5	13-6490	Gasket-.002 Thk.	A/R
6	13-6610	Gasket-.003 Thk.	A/R
7	13-6600	Gasket-.005 Thk.	A/R
8	13-6590	Gasket-.015 Thk.	A/R
9	254-57	Cup-Bearing	3
10	254-58	Cone-Bearing	3
11	70-2440	Collar-Thrust	1
12	93-4430	Shaft	1
13	13-6650	Housing	1

Ref. No.	Part No.	Description	No. Used
14	285-12	Plug-Pipe	2
15	70-2450	Gear-17 Tooth	1
16	70-2380	Key-Tapered	2
17	70-2360	Cap	1
18	254-61	Cup-Bearing	1
19	254-62	Cone-Bearing	1
20	13-6540	Shim-.010 Thk.	A/R
21	13-6630	Shim-.005 Thk.	A/R
23	70-2370	Gear-23 Tooth	1
24	70-2390	Shaft	1
25	70-2410	Ring-Retaining	3
26	59-1460	Plug-Vent	1

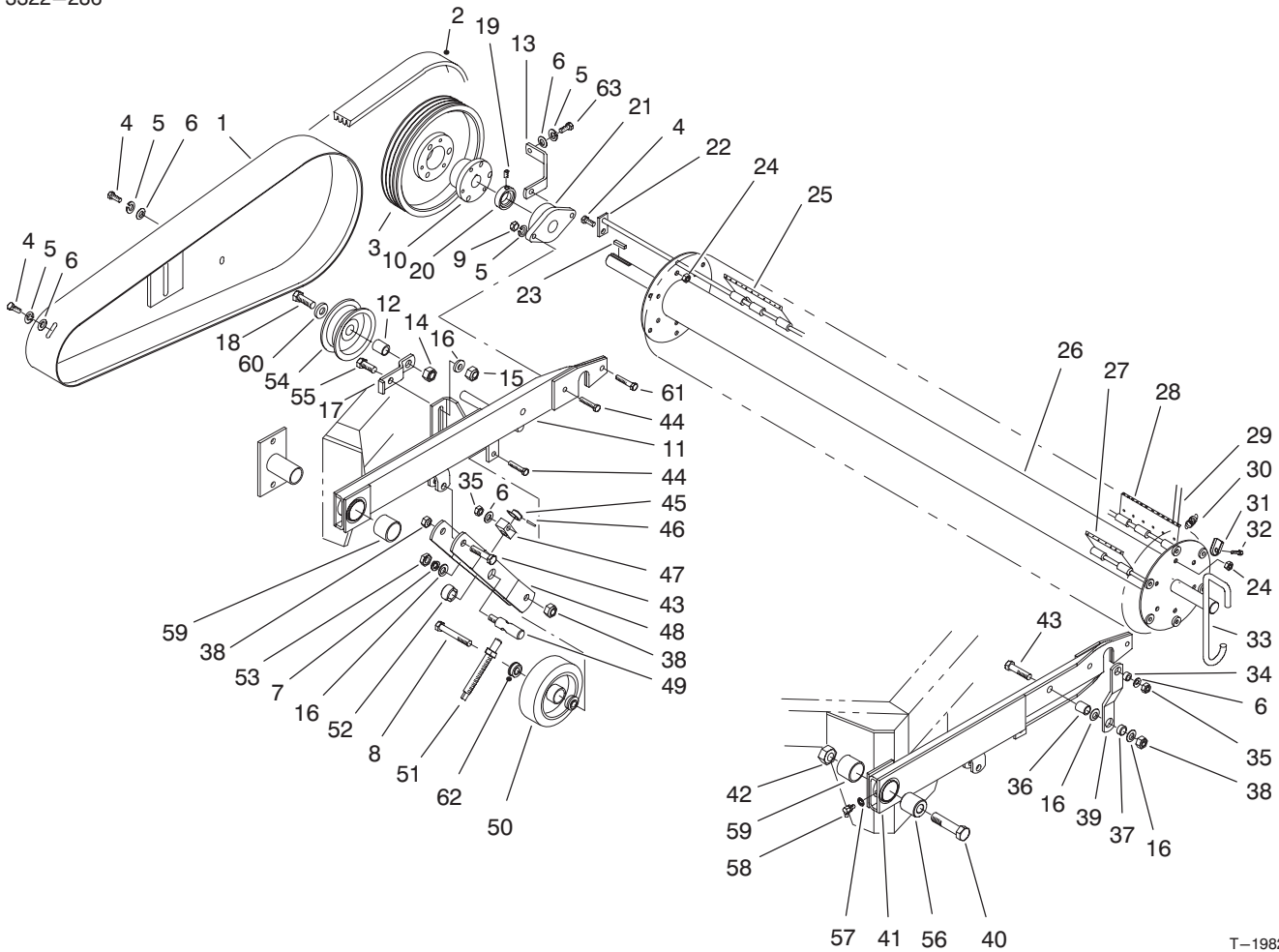


T-0007-1

HOPPER & REAR TAILGATE

Ref. No.	Part No.	Description	No. Used	Ref. No.	Part No.	Description	No. Used
1	94-9141	Screen-Top	2	23	94-9139	Panel-Bottom, LH	1
2	94-9135	Panel-Top	1	24	3296-23	Nut-Lock	3
3	94-9129	Panel-LH	1	25	13-3710	Washer-Flat	2
*	94-9133	Panel-RH	1	26	3256-26	Washer-Flat	9
4	3234-33	Screw-HFH	96	27	325-6	Screw-HH	3
5	94-9128	Panel-Front	2	28	94-9138	Panel-Bottom, (Middle)	1
6	13-6760	Decal-Caution	1	29	94-9137	Panel-Bottom, (RH)	1
7	3272-12	Pin-Cotter	3	30	3250-32	Screw-Phillips Pan Hd.	9
8	3256-27	Washer-Flat	3	31	93-4030	Strap-Hopper, Front	2
9	32128-32	Nut-Lock	193	32	3258-165	Screw-Rd. Hd.	2
10	13-2930	Decal-Slow Moving Vehicle	1	33	93-0184	Decal-Hopper	2
11	283-39	Pin-Clevis	3	34	65-5871	Tube-Manual	1
13	93-4003	Gate	1	35	65-5890	Cap-Tube	2
14	13-7430	Decal-Warning	1	36	2412-102	R-Clamp	2
15	3229-7	Bolt-Carriage	50	37	32153-2	Nut-Lock	2
16	13-7340	Stiffener-LH	1	38	323-6	Screw-HH	4
*	13-7330	Stiffener-RH	1	39	3296-39	Nut-Lock	4
17	67-7920	Decal-Toro	2	40	3253-7	Washer-Lock	2
18	93-4031	Strap-Hopper, Top	4	41	325-7	Screw-HH	2
19	93-4042	Support	2	42	93-7708	Strip-Sealing	1
20	3256-55	Washer-Flat	28	*	92-2409	Asm-Hopper (Incl. Ref. #1-9, 11-18, 20, 22-23, 25, 28-33 & 42)	1
21	12-8810	Spring	2				
22	32122-42	Screw-Machine	36				

*Not Illustrated



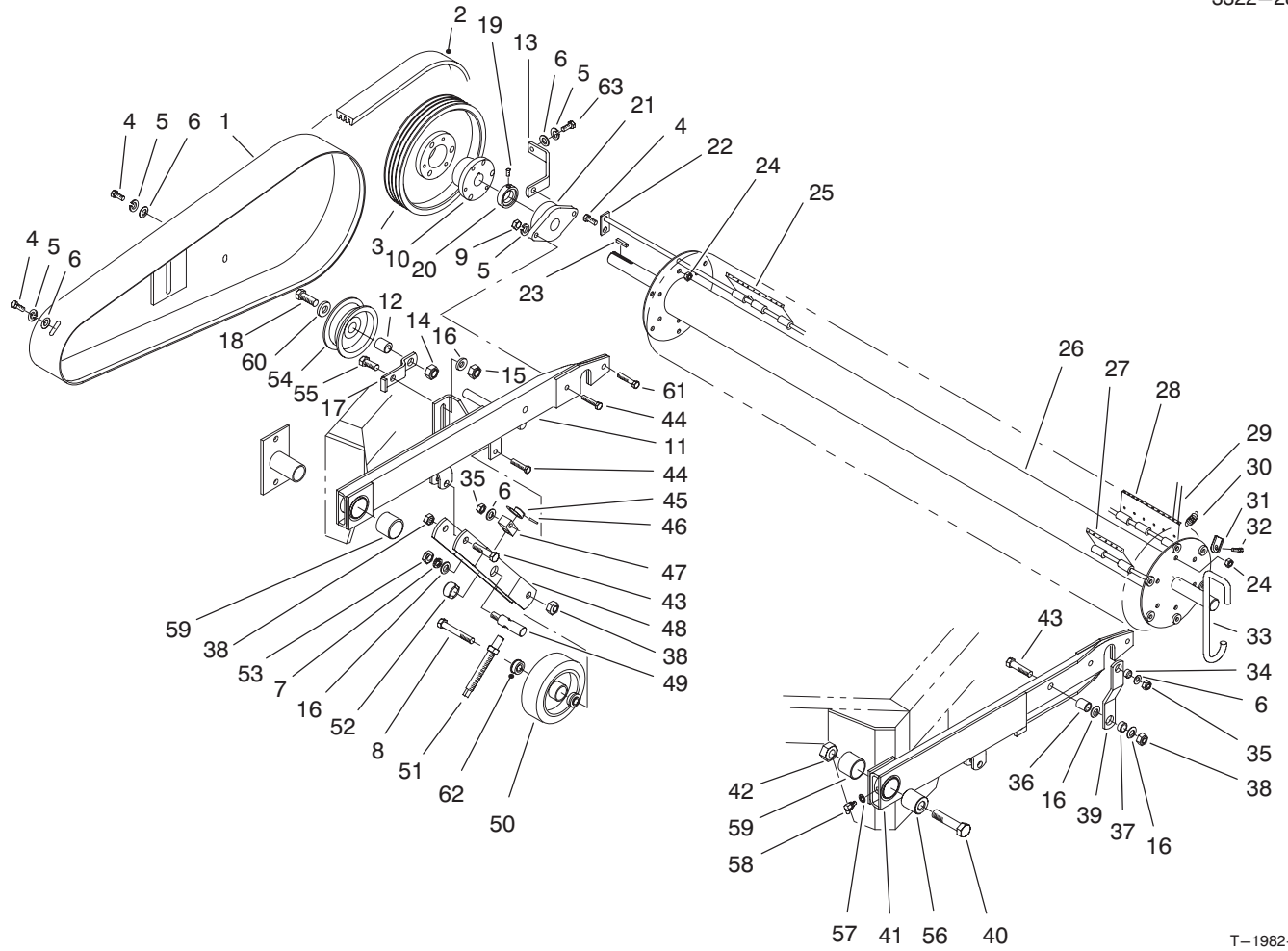
T-1982-1

FLEX TIP REEL & TRAILING ARM

Ref. No.	Part No.	Description	No. Used
1	93-4422	Guard-Belt	1
2	93-4034	V-Belt	1
3	93-4001	Pulley-4 Groove	1
4	323-4	Screw-HH	6
5	3253-21	Washer-Lock	7
6	3256-24	Washer-Flat	7
7	3253-7	Washer-Lock	2
8	325-14	Screw-HH	2
9	3217-7	Nut-Hex.	4
10	13-2680	Bushing	1
11	93-4445	Trailing Arm-RH (Incl. Ref. #59)	1
12	93-4428	Spacer-Pulley	1
13	93-4434	Support Bracket	1
14	3296-53	Nut-Lock	1
15	3296-23	Nut-Lock	1
16	3256-26	Washer-Flat	7
17	93-4433	Pulley Bracket	1
18	327-6	Screw-HH	1
19		Screw-Set	2
20		Collar-Locking	2
21	56-6230	Bearing (Incl. Ref. #19 & 20)	2
22	13-4960	Shaft-Plate, Finger	6
23	13-2840	Key-Square	1
24	32152-2	Nut-Lock	12

Ref. No.	Part No.	Description	No. Used
25	93-0189	Asm-End Plate, Stake	3
26	93-0197	Flex Tip-Reel	1
27	93-0185	Asm-Center Plate, Stake	60
28	93-0187	Asm-End Plate, Stake	3
29	13-6700	Finger-Nylon	276
30	13-3090	Spring	66
31	13-2480	Clamp-Finger	276
32	32140-94	Screw-HH	276
33	93-7711	Hook-Transport	2
34	13-0560	Spacer	2
35	32153-2	Nut	4
36	13-0360	Spacer	2
37	13-3070	Spacer	2
38	32153-5	Nut	6
39	13-5540	Link-Lift	2
40	328-10	Bolt-HH	1
41	63-5300	Trailing Arm-LH (Incl. Ref. #59)	1
42	32153-6	Nut	1
43	325-9	Screw-HH	4
44	323-9	Screw-HH	5
45	13-0320	Collar-Lock	2
46	32121-45	Pin-Roll	2
47	13-0330	Block-Pivot	2
48	13-5550	Arm-Gauge Wheel	2
49	13-5570	Bar-Pivot	2

*Not Illustrated



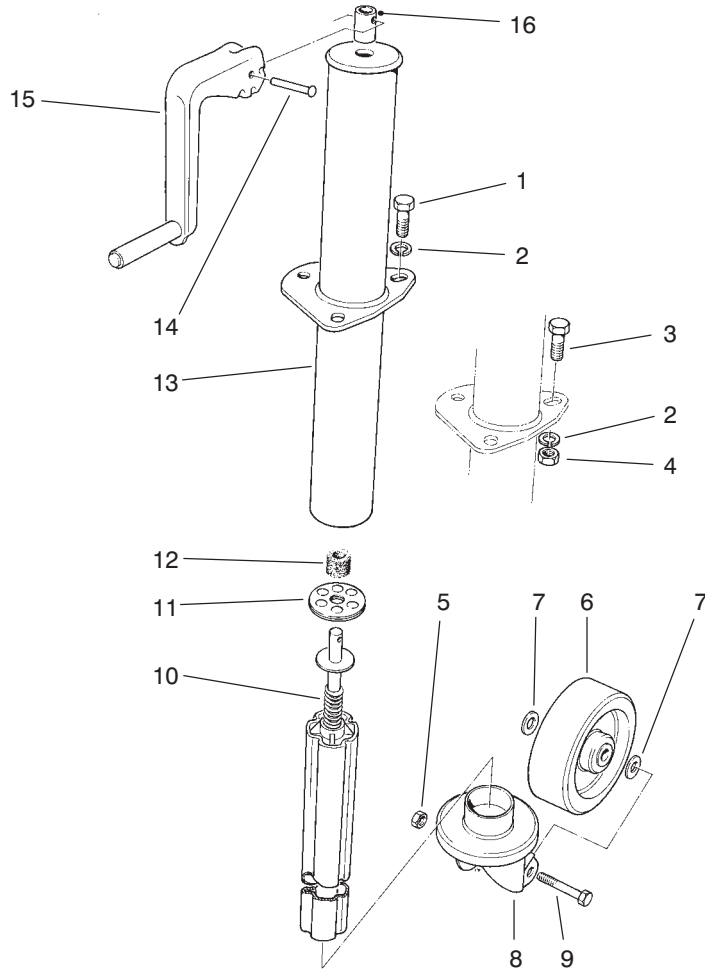
T-1982-1

FLEX TIP REEL & TRAILING ARM (Continued)

Ref. No.	Part No.	Description	No. Used
50	13-2870	Wheel-Gauge (Incl. Ref. #62)	2
51	13-5590	Rod-Adjustment	2
52	13-5670	Spacer-Locking	2
53	3217-9	Nut-Hex.	2
54	93-4415	Pulley-Idler	1
55	325-5	Screw-HH	1
56	63-5250	Spacer	1

Ref. No.	Part No.	Description	No. Used
57	3254-8	Washer-Lock	2
58	302-5	Fitting-Grease	2
59	256-298	Bushing	2
60	93-4429	Washer-Pulley	1
61	323-10	Screw-HH	1
62	93-7715	Ball Bearing	4
63	323-5	Screw-HH	3

*Not Illustrated



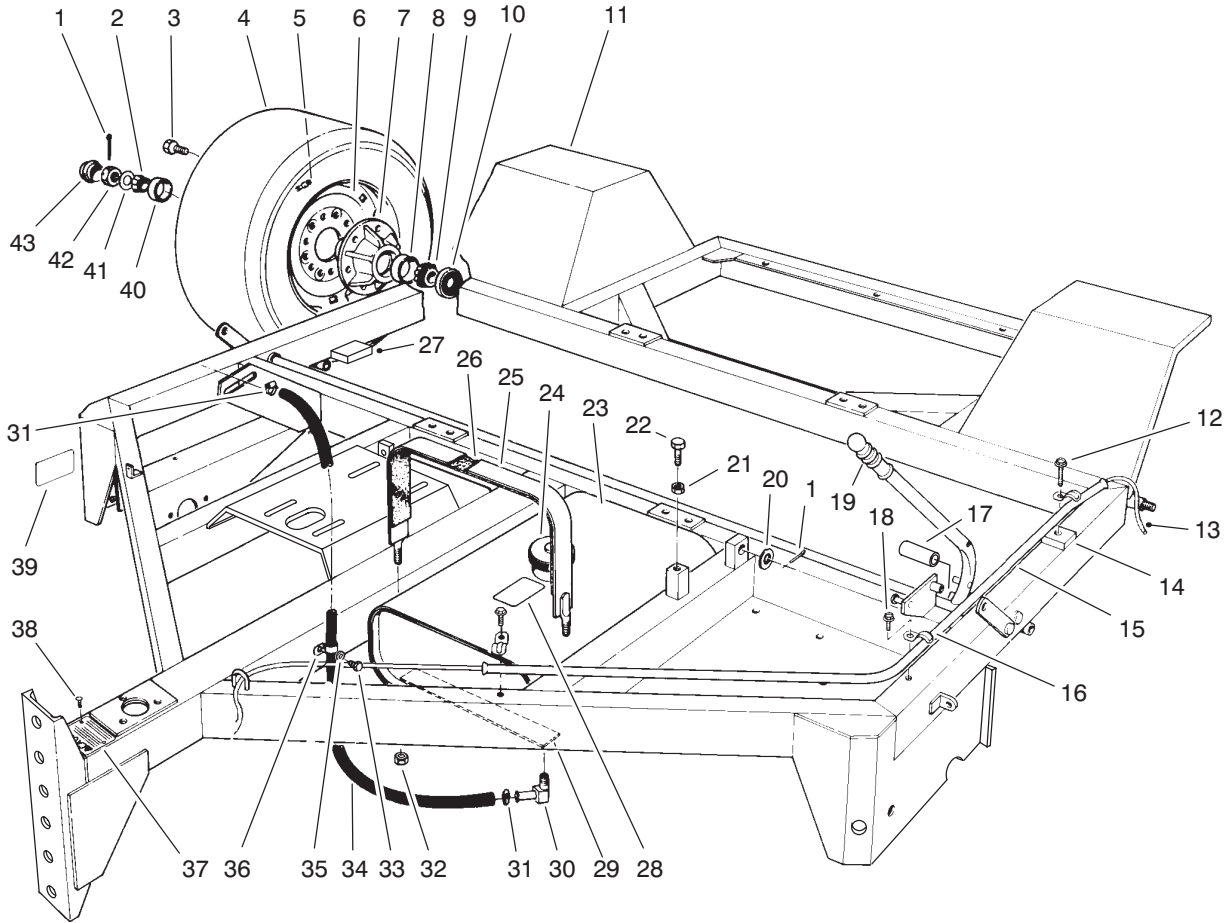
T-0015

JACK ASSEMBLY

Ref. No.	Part No.	Description	No. Used
1	323-4	Screw-HH (Model 07050 only)	3
2	3253-21	Washer-Lock	3
3	323-5	Screw-HH (Model 07052 only)	3
4	3217-7	Nut-Hex. (Model 07052 only)	3
5	3296-23	Nut-Lock	1
6	13-6460	Wheel	1
7	3256-26	Washer-Flat	2
8	13-6450	Bracket-Wheel, Caster	1

Ref. No.	Part No.	Description	No. Used
9	325-13	Screw-HH	1
10	13-6750	Ram	1
11	13-3510	Bearing-Thrust	1
12	13-3610	Sleeve-Felt	1
13	13-5680	Asm-Jack (Incl. Ref. #10-16)	1
14	13-6730	Rivet	1
15	13-6740	Handle	1
16	13-3490	Sleeve	1
*	13-6440	Asm-Wheel (Incl. Ref. #5-9)	1

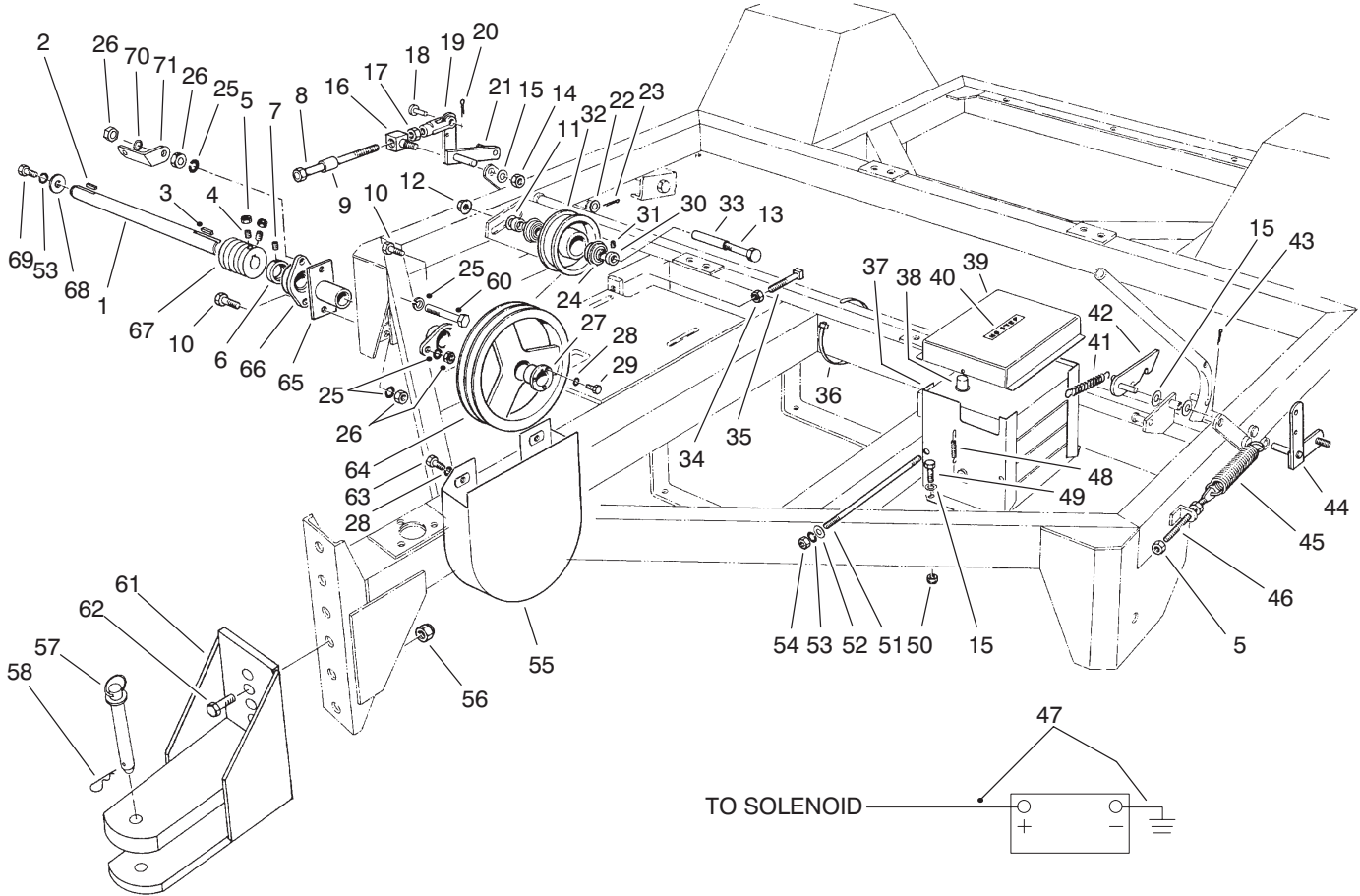
*Not Illustrated



T-0006

FRAME ASSEMBLY (Model No. 07050)

Ref. No.	Part No.	Description	No. Used	Ref. No.	Part No.	Description	No. Used
1	3272-17	Pin-Cotter	3	23	13-3930	Tank-Gas	1
2	254-62	Cone-Bearing	2	24	222-8	Cap-Gas	1
3	217-103	Bolt-Wheel	12	25	13-3960	Asm-Strap (Incl. Ref. #26)	2
4	93-0181	Tire	2	26	13-3970	Felt Strip	2
5	232-27	Stem-Valve	2	27	93-7709	Pad	1
6	93-0182	Asm-Wheel	2	28	53-4420	Decal-Gas	1
7	242-54	Hub (Incl. Ref. #8 & 40)	2	29	13-3970	Strip-Felt	2
8	254-66	Cup-Bearing	2	30	304-75	Fitting-Tube	1
9	254-65	Cone-Bearing	2	31	2412-108	Clamp-Hose	2
10	253-127	Seal	2	32	32153-3	Nut-Lock	4
11	93-4009	Main Frame	1	33	32104-109	Screw	1
12	32104-96	Screw-Self Tapping	1	34	94-4522	Hose-Fuel Line	1
13	20-9580	Rope	1	35	3256-22	Washer-Flat	1
14	13-6910	Spacer-Guide, Rope	1	36	2412-93	Clamp	1
15	13-6890	Guide-Rope	1	37	13-7460	Plate-Caution, Hitch	1
16	2412-40	Clamp-Conduit	3	38	3290-55	Rivet-Pop	4
17	3-3107	Hose	1	39	67-5360	Decal	1
18	32104-95	Screw-Self Tapping	2	40	254-61	Cup-Bearing	2
19	235-15	Grip-Handle	1	41	3256-29	Washer-Flat	2
20	3256-28	Washer-Flat	1	42	32136-1	Nut-Slotted	2
21	3218-3	Nut-Jam	1	43	242-55	Cap-Hub	2
22	323-8	Screw-HH	1				

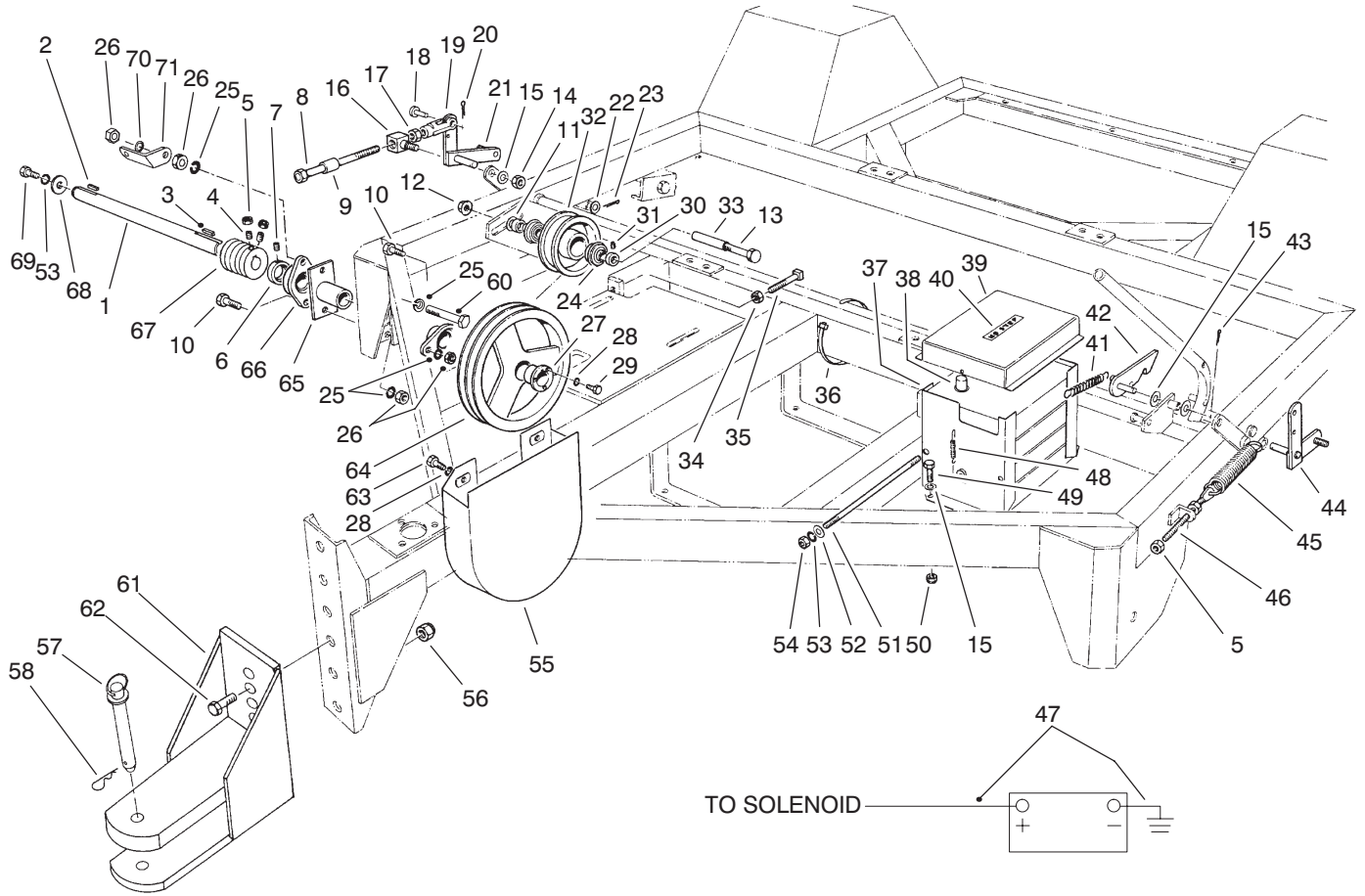


T-0010

JACKSHAFT & LIFTING MECHANISM (Model No. 07050)

Ref. No.	Part No.	Description	No. Used
1	93-4032	Shaft-Jack	1
2	68-3220	Key-Square	1
3	13-6330	Key-Square	1
4	3243-6	Screw-Set	2
5	3218-3	Nut-Jam	6
6		Collar-Locking	2
7		Screw-Set	2
8	13-6260	Screw-Adjustment	2
9	13-5520	Spacer	2
10	324-7	Screw-HH	3
11	3256-26	Washer-Flat	1
12	32128-49	Nut-HFH	1
13	325-20	Screw-HH	1
14	32153-2	Nut-Lock	2
15	3256-24	Washer-Flat	7
16	13-0100	Block-Pivot	2
17	3219-3	Nut-Hex	2
18	283-2	Pin-Clevis	2
19	282-22	Clevis	2
20	3272-10	Pin-Cotter	2
21	93-4440	Bell Crank-Lift, RH	1
22	3256-28	Washer-Flat	2
23	3272-22	Pin-Cotter	2
24	56-6210	Bearing (Incl. Ref. #30 & 31)	2
25	3253-6	Washer-Lock	5

Ref. No.	Part No.	Description	No. Used
26	3217-8	Nut-Lock	5
27	13-2680	Bushing (Incl. Ref. #28 & 29)	1
28	3253-4	Washer-Lock	5
29	322-7	Screw-HH	3
30		Collar-Locking	2
31		Screw-Set	2
32	13-0600	Pulley-Idler (Incl. Ref. #24)	1
33	93-7706	Tube-Spacer	1
34	3218-5	Nut-Hex.	2
35	3244-21	Screw-Set	2
36	250-5	Strap-Locking	2
37	3-5967	Support-Battery	2
38	55-7290	Battery	1
39	3-3175	Cover-Battery	1
40	61-5950	Decal	1
41	13-0480	Spring	1
42	13-3990	Handle-Trip	1
43	3272-10	Pin-Cotter	1
44	13-5500	Bell Crank-Lift, LH	1
45	13-0050	Spring	2
46	13-5530	Rod-Adjustment, Spring	2
47	13-6790	Cable-Battery	2
48	3-8135	Spring	2
49	323-5	Screw-HH	4

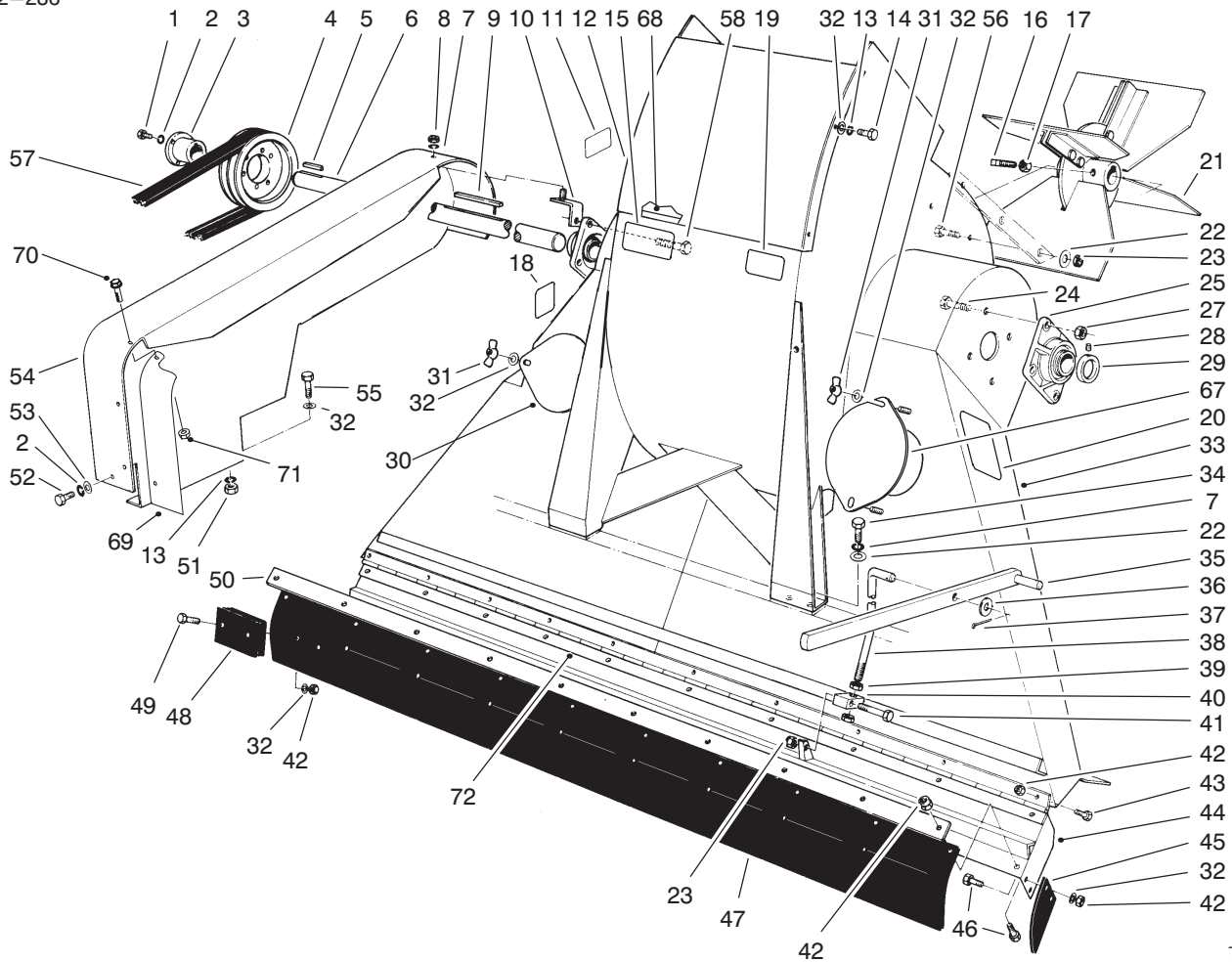


T-0010

JACKSHAFT & LIFTING MECHANISM (Model No. 07050) (Continued)

Ref. No.	Part No.	Description	No. Used
50	3296-39	Nut-Lock	4
51	5-0678	Rod-Clamp, Battery	2
52	3256-22	Washer-Flat	4
53	3253-3	Washer-Lock	5
54	3217-5	Nut-Hex.	4
55	13-4490	Guard-Sheave	1
56	3296-53	Nut-Lock	2
57	13-6200	Pin-Hitch (Incl. Ref. #58)	1
58	3290-343	Pin-Hair Cotter	1
60	324-10	Screw-HH	1
61	93-4409	Tongue	1

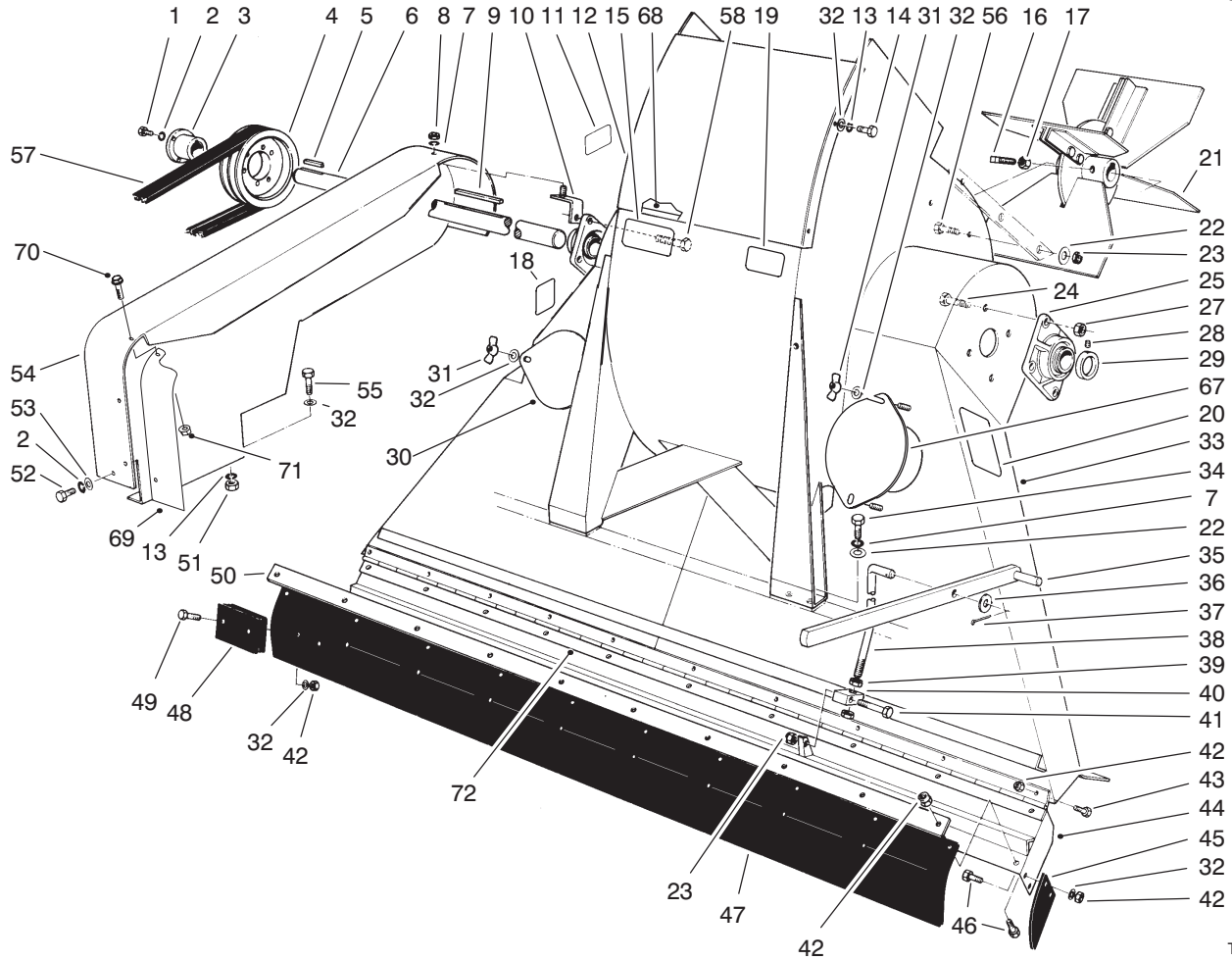
Ref. No.	Part No.	Description	No. Used
62	327-6	Screw-HH	2
63	322-7	Screw-HH	2
64	13-2670	Sheave	1
65	63-5210	Spindle-Driveside	1
66	56-6230	Bearing (Incl. Ref. #6 & 7)	2
67	93-4033	Pulley-Driver	1
68	13-3710	Washer	1
69	321-4	Screw-HH	1
70	3290-211	Washer-Spring	1
71	93-4438	Bracket-Belt Guard	1



T-3266

BLOWER & THROAT ASSEMBLY (Model No. 07050)

Ref. No.	Part No.	Description	No. Used	Ref. No.	Part No.	Description	No. Used
1	322-7	Screw-HH	3	27	32153-5	Nut-Lock	8
2	3253-4	Washer-Lock	4	28		Screw-Set	2
3	13-2970	Bushing (Incl. Ref. #1 & 2)	1	29		Collar-Locking	2
4	13-2800	Pulley	1	30	13-1420	Cover-Inspection	1
5	13-2240	Key-Square	1	31	32103-12	Nut-Wing	4
6	13-3790	Shaft-Fan	1	32	3256-22	Washer-Flat	32
7	3253-21	Washer-Lock	9	33	13-6280	Blower (Incl. Ref. #11-15, 18-20, 30-32, & 67-68)	1
8	3217-7	Nut-Hex.	1	34	323-6	Screw-HH	8
9	13-2810	Key-Square	1	35	13-6390	Handle-Flap	1
10	13-3350	Mounting Bracket	1	36	3256-27	Washer-Flat	1
11	67-5360	Decal	1	37	3272-12	Pin-Cotter	1
12	13-3850	Plate-Blower Access	1	38	13-6360	Rod-Lift	1
13	3253-3	Washer-Lock	6	39	3218-6	Nut-Jam	2
14	321-4	Screw-HH	4	40	13-0330	Block-Pivot	1
15	13-6410	Decal	1	41	323-9	Screw-HH	1
16	3244-14	Screw-Set, Sq. Hd.	4	42	3296-42	Nut-Lock	52
17	3218-5	Nut-Jam	4	43	321-3	Screw-HH	20
18	92-8309	Decal-Warning	1	44	95-3112	Flap-Lower	1
19	93-7307	Decal-Warning	1	45	13-3130	Flap-End	2
20	93-4041	Decal-Op. Instructions	1	46	321-5	Screw-HH	14
21	13-3420	Asm-Fan	1	47	13-4700	Flap (Incl. Ref. #23, 42, 48-49)	1
22	3256-24	Washer-Flat	14	48	13-4560	Weight-Flap	18
23	3296-39	Nut-Lock	7	49	321-8	Screw-HH	18
24	325-6	Screw-HH	7	50	13-1390	Retainer-Flap	1
25	56-6220	Bearing (Incl. Ref. #28 & 29)	2				

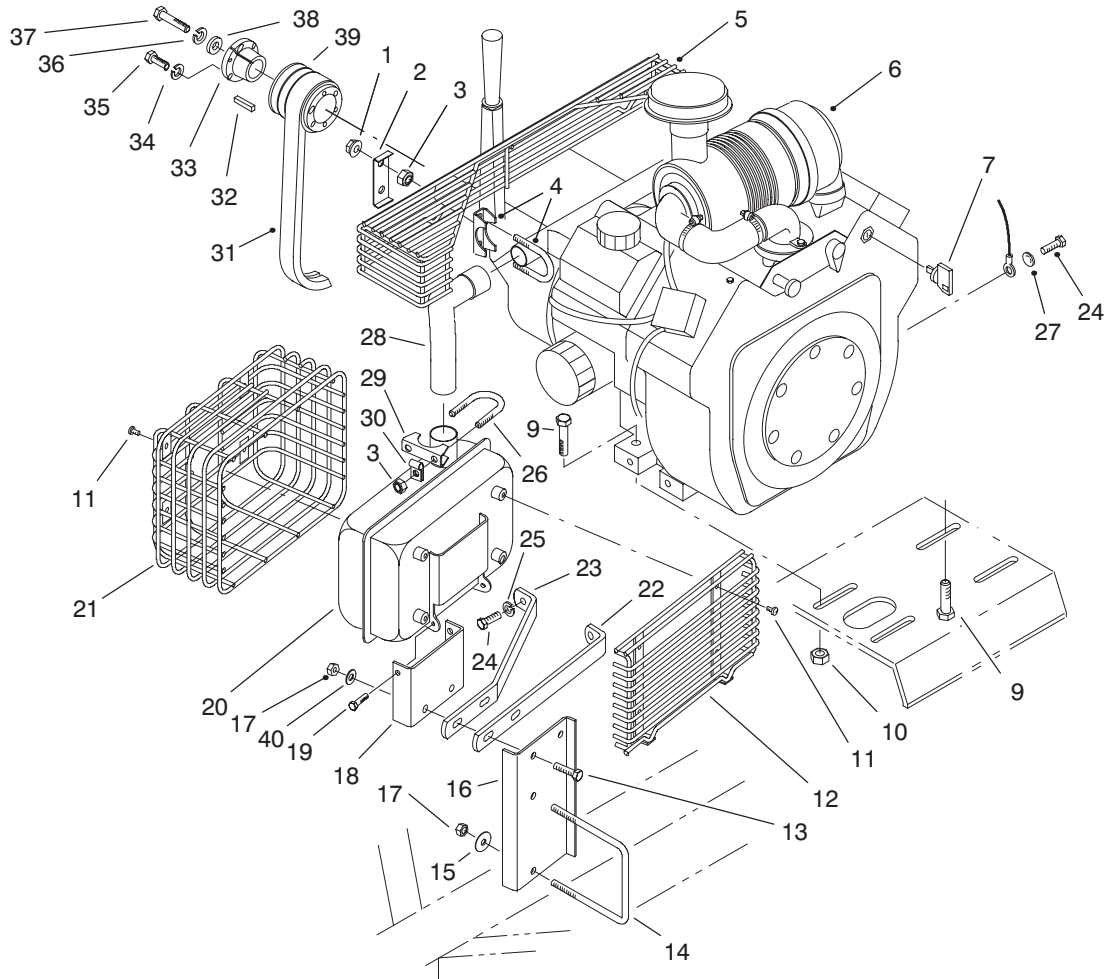


T-3266

BLOWER & THROAT ASSEMBLY (Model No. 07050) (Continued)

Ref. No.	Part No.	Description	No. Used
51	3217-5	Nut-Hex	2
53	3256-23	Washer-Flat	1
54	13-4800	Guard-Belt	1
55	321-4	Screw-HH	2
56	323-7	Screw-HH	6
57	93-0183	Belt	1
58	325-7	Screw-HH	1

Ref. No.	Part No.	Description	No. Used
67	93-4020	Cover-Inspection	1
68	93-7708	Strip-Sealing	1
69	93-7707	Shield-Belt Guard	1
70	3234-33	Screw-HH	2
71	32128-32	Nut-Lock, Flange	2
72	95-3114	Hinge-Continuous	1



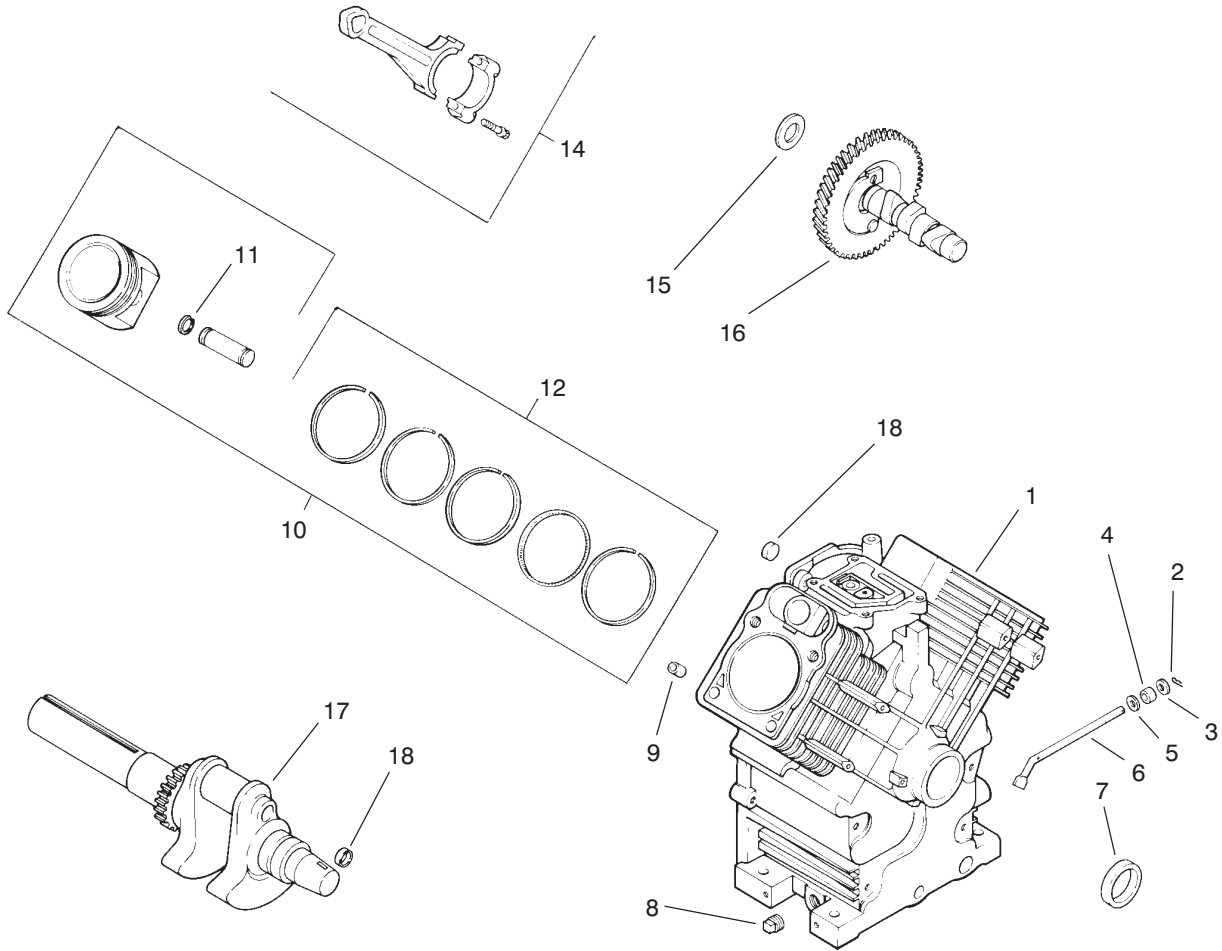
T-3249

ENGINE ASSEMBLY

Ref. No.	Part No.	Description	No. Used	Ref. No.	Part No.	Description	No. Used
1	32128-20	Nut-Lock, Flange	4	22	93-4000	Strap-Muffler Support	1
2	93-7703	Plate-Clamp Guard	2	23	93-0199	Strap-Muffler Support	1
3	32153-3	Nut-Lock	4	24	33114-016	Screw-Cap HH	3
4	94-1756	Asm-Muffler Clamp	2	25	3253-4	Washer-Lock	2
5	93-4418	Guard-Manifold, Exhaust	1	26	2112-11	Clamp-Muffler (Incl. Ref. #29)	1
‡6		Engine Kohler CH22CS Spec 76519	1	27	3254-2	Washer-Lock ITLW	1
7	63-8360	Key	2	‡28	24 382 04	Pipe-Exhaust	1
9	323-9	Screw-HH	4	29		Clamp-Muffler	1
10	32128-29	Nut-HFH	4	30	2412-103	R-Clamp	1
11	47-2830	Screw-Machine	8	31	13-2650	V-Belt	1
12	93-4419	Guard-Muffler, Rear	1	32	3-9155	Key-Square	1
13	322-6	Screw-HH	2	33	13-3330	Bushing (Incl. Ref. #37 & 38)	1
14	93-4417	U-Bolt	1	34	3253-3	Washer-Lock	3
15	3256-82	Washer-Flat	2	35	321-6	Screw-HH	3
16	93-4416	Bracket-Support, Muffler	1	36	3253-21	Washer-Lock	1
17	3296-47	Nut-Lock	4	37	323-10	Screw-HH	1
18	93-0198	Bracket-Support, Muffler	1	38	4-1920	Washer	1
19	46-6810	Screw	2	39	13-3320	Pulley	1
‡20	24 068 14	Muffler	1	40	3256-23	Washer-Flat	2
‡21	24 314 03	Guard-Muffler	1				

*Not Illustrated

‡Obtain these items directly from Kohler Co., Kohler, WI 53044 1-800-544-2444



T-1984-1

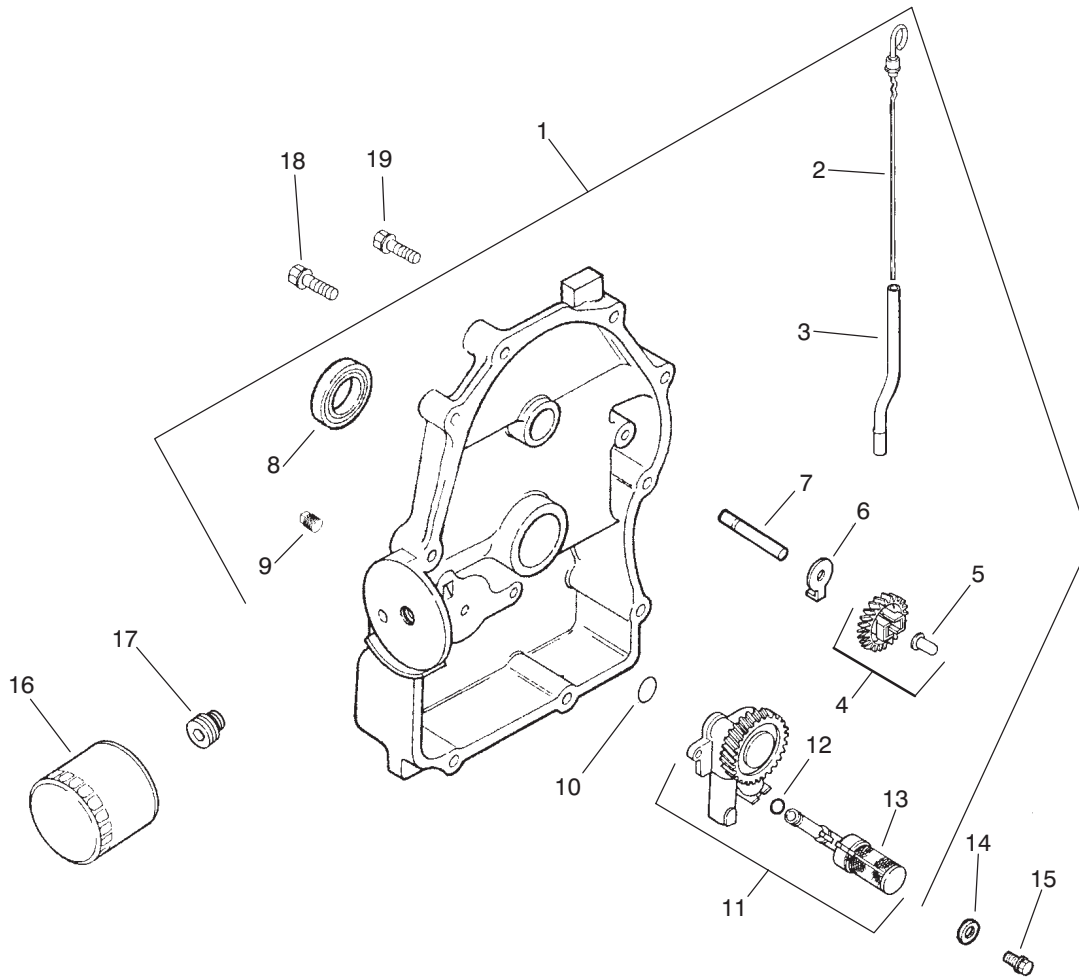
CRANKSHAFT & CRANKCASE

Ref. No.	Part No.	Description	No. Used
1		Cylinder Block	1
2	12 380 04	Pin-Hitch	1
3	M-631005	Washer-Plain	1
4	12 032 01	Seal-Governor Cross Shaft	1
5	X-25-102	Washer-Plain	1
6	24 144 01	Shaft-Governor Cross	1
7	24 032 01	Seal-Oil Front	1
8	X-75-10	Plug-Sq. Hd. Solid	2
9	12 380 17	Pin-Dowel Locating	6
10	24 874 09	Piston w/Ring Set (Std.) (Incl. Ref. #11-12)	2
*	24 874 10	Piston w/Ring Set (.25)	2
*	24 874 11	Piston w/Ring Set (.50)	2
*	24 874 15	Piston w/Ring Set (.080)	2
11	24 018 01	Retainer-Piston pin	4
12	24 108 08	Ring Set (Std.)	2
*	24 108 09	Ring Set (.25)	2
*	24 108 10	Ring Set (.50)	2

Ref. No.	Part No.	Description	No. Used
14	24 067 13	Connecting Rod (Std.)	2
*	24 067 14	Connecting Rod (.25)	2
15	12 422 09	Shim-Camshaft, Red	A/R
*	12 422 13	Shim-Camshaft, Black	A/R
*	12 422 07	Shim-Camshaft, White	A/R
*	12 422 08	Shim-Camshaft, Blue	A/R
*	12 422 10	Shim-Camshaft, Yellow	A/R
*	12 422 11	Shim-Camshaft, Green	A/R
*	12 422 12	Shim-Camshaft, Gray	A/R
16	24 012 10	Camshaft	1
17	24 014 78	Crankshaft (Incl. Ref. #18)	1
18	52 139 09	Plug-Cup	1

*Not Illustrated

Note: Obtain these items directly from Kohler Co., Kohler, WI 53044 1-800-544-2444

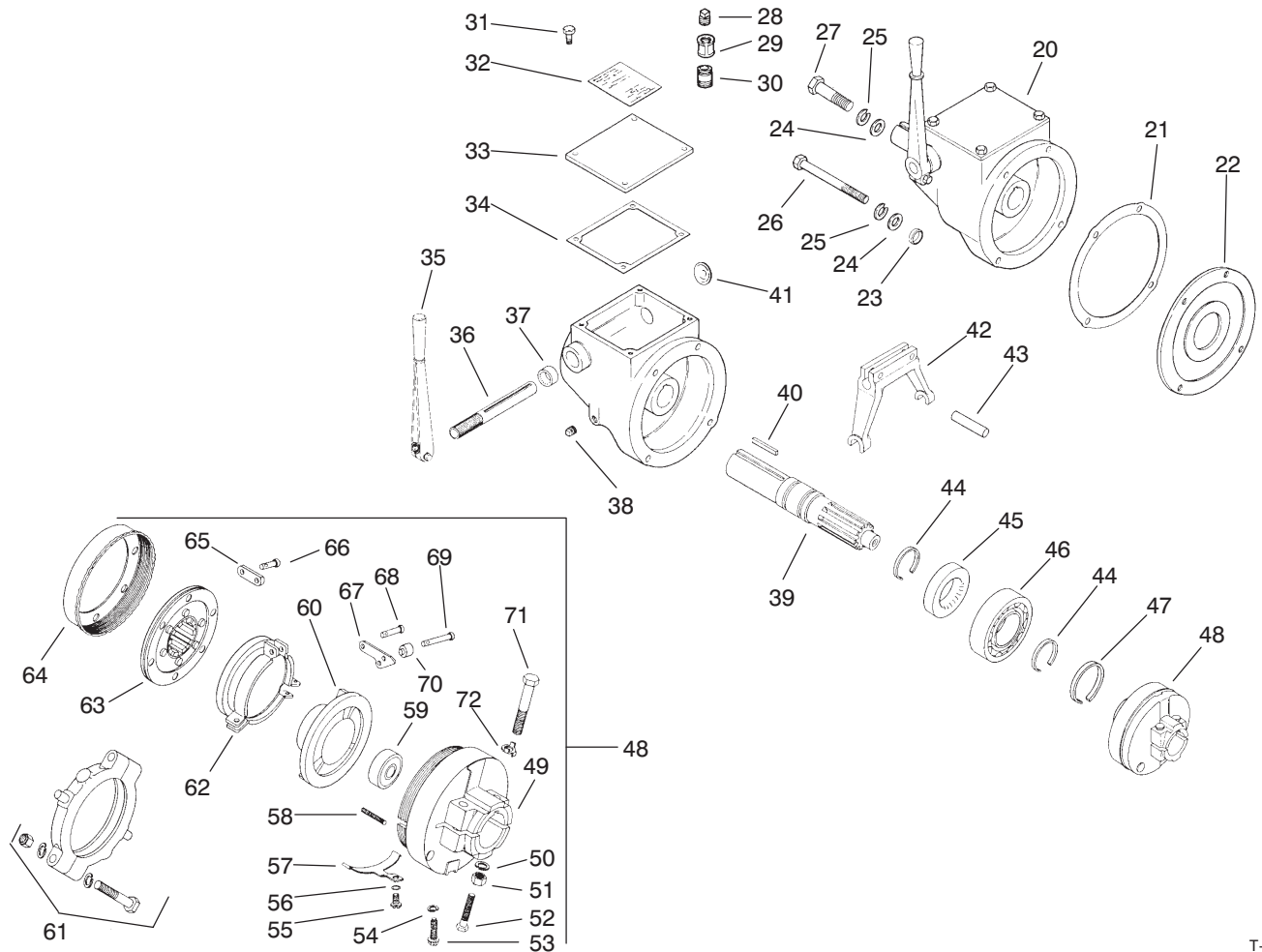


T-3255

CLOSURE PLATE, OIL PUMP & GOVERNOR

Ref. No.	Part No.	Description	No. Used	Ref. No.	Part No.	Description	No. Used
1	24 009 90	ASM—Plate, Closure (Incl. Ref. #2—13)	1	10	24 153 08	O—Ring	1
2	24 038 06	Dipstick	1	11	24 393 10	ASM—Pump, Oil (Incl. Ref. #12—13)	1
3	24 123 08	Tube—Dipstick	1	12	24 153 01	O—Ring, Oil Pick—Up	1
4	24 043 12	Kit—Gear, Governor (Incl. Ref. #5)	1	13	24 381 04	Pick—Up, Oil	1
5	12 380 01	Pin—Regulating, Governor	1	14	M—631005	Washer—Plain	6
6	52 448 02	Tab—Locking	1	15	M—645025	Screw—Hex. Flange Hd.	2
7	12 144 02	Shaft—Gear, Governor	1	16	12 050 01	Filter—Oil	1
8	52 032 08	Seal—Oil (PTO End)	1	17	24 136 01	Nipple—Filter, Oil	1
9	X—75—23	Plug—Pipe	2	18	24 086 16	Screw—Hex. Flange Hd.	9
				19	24 086 17	Screw—Hex. Flange Hd.	1

Note: Obtain these items directly from Kohler Co., Kohler, WI 53044 1-800-544-2444



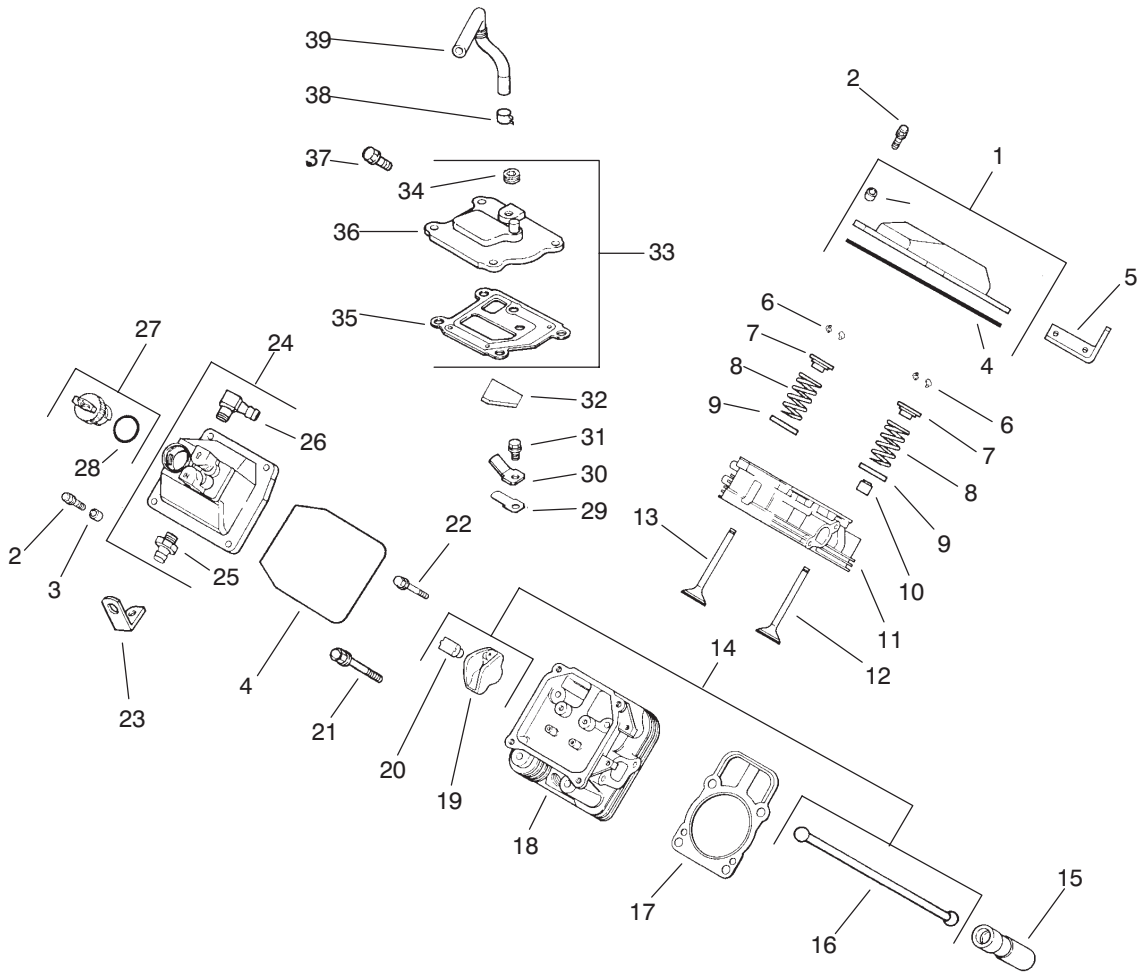
CLUTCH ASSEMBLY

T-3256

Ref. No.	Part No.	Description	No. Used	Ref. No.	Part No.	Description	No. Used
20	24 239 02	Clutch (Incl. Ref. #31-72)	1	47	48 141 02	Ring-Snap	1
21	24 041 25	Gasket-Clutch	1	48	24 239 03	ASM-Clutch (Incl. Ref. #49-72)	1
22	24 146 10	Plate-Adapter	1	49	24 081 08	Housing-Clutch	1
23	24 032 15	Seal-Bolt	2	50	X-22-1	Washer-Lock	3
24	X-25-34	Washer-Plain	4	51	X-83-4	Nut-Hex.	2
25	X-23-1	Washer-Lock	4	52	X-7-29	Screw-HH	2
26	24 086 29	Screw-HH	2	†53		Screw-Dog Point	1
27	24 086 28	Screw-HH	2	54	X-21-1	Washer-Lock	1
28	270219	Plug-Vent	1	55	X-52-22	Screw-Fillister Hd.	1
29	X-216-25	Coupling-Pipe	1	56	X-52-11	Washer-Lock	1
30	47 136 02	Nipple-Pipe	1	57	234043	Lock-Adjusting	1
31	X-5-1	Screw-HH	4	58	234055	Spring-Return	3
32	24 146 14	Plate-Instruction	1	59	234042	Bearing-Ball	1
33	24 096 37	Cover-Clutch	1	60	A-234045	Plate-Pressure	1
34	24 041 28	Gasket-Cover, Clutch	1	61	A-234053	ASM-Bearing, Release	1
35	A-234026	Lever-Shifting	1	62	234054	Sleeve-Release	1
36	24 144 24	Shaft-Yoke	1	63	A-234044	Member-Driven	1
37	X-271-19	Seal-Oil	1	64	234056	Ring-Adjusting	1
38	X-75-2	Plug-Pipe, Square Hd.	2	65	234050	Link-Connecting	6
39	234039	Shaft-Drive	1	66	234052	Pin-Link, Short	3
40	24 340 01	Key-Square	1	67	234046	Plate-Lever, Pressure	6
41	X-230-20	Plug-Welch	1	68	234051	Pin-Link, Long	3
42	24 471 01	Yoke-Clutch	1	69	234047	Pin-Lever	3
43	274101	Pin-Roll	2	70	234048	Roller-Plate, Pressure	3
44	234037	Ring-Retaining	2	71	X-7-2	Screw-HH	1
45	234038	Seal-Oil	1	72	234057	Lock-Screw	1
46	234035	Bearing-Ball	1				

Note: Obtain these items directly from Kohler Co., Kohler, WI 53044 1-800-544-2444

† Discontinued. Not available from Kohler.



T-3257

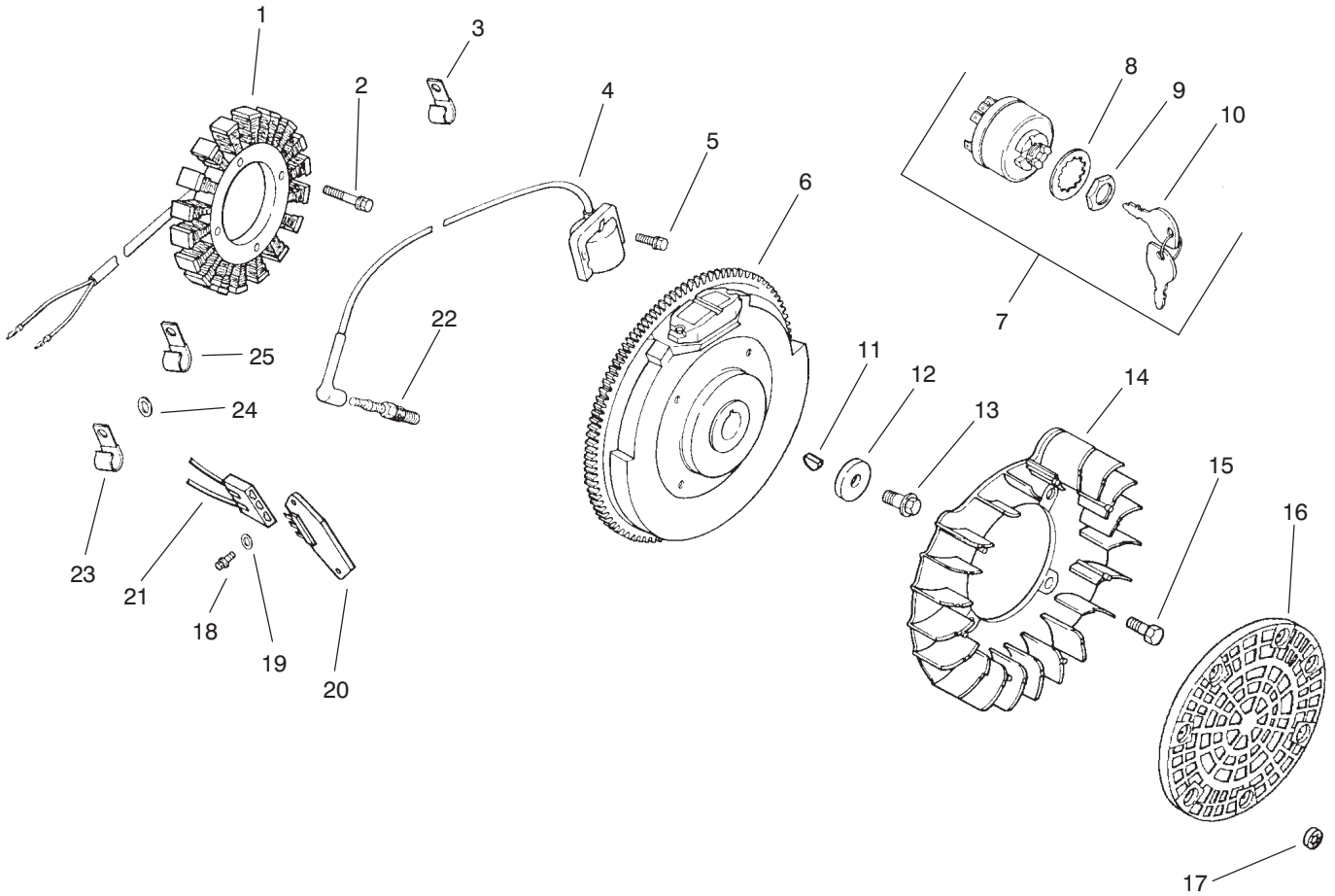
CYLINDER HEAD, VALVE, & BREATHER

Ref. No.	Part No.	Description	No. Used
1	24 755 74	Kit-Valve, Cover (Incl. Ref. #2-4)	1
2	M-651030	Screw-Hex. Flange Hd.	4
3	24 112 08	Spacer	4
4	24 153 16	O-Ring, Valve Cover	1
5	24 455 01	Strap-Lifting	1
6	12 755 03	Kit-Retainer	4
7	12 173 01	Cap-Valve Spring	4
8	24 089 02	Spring-Valve	4
9	235011	Retainer-Spring	4
10	24 032 05	Seal-Valve Stem	2
11	24 318 09	ASM-Head, #1 Cylinder	1
12	24 017 01	Valve-Intake (Std.)	2
12	24 017 02	Valve-Intake (.25)	2
13	24 016 01	Valve-Exhaust (Std.)	2
13	24 016 02	Valve-Exhaust (.25)	2
14	24 755 66	Kit-Valve Train (Incl. Ref. #16, 19 & 20)	1
15	25 351 01	Lifter-Valve	4
16	24 411 05	Rod-Push	4
17	24 041 40	Gasket-Head, Cylinder	2
18	24 318 10	ASM-Head, #2 Cylinder	1
19	25 186 01	Arm-Rocker	4

Ref. No.	Part No.	Description	No. Used
20	24 599 01	Pivot-Arm, Rocker	4
21	24 086 44	Screw-Hex. Flange Hd.	8
22	M-640034	Screw-Hex. Flange Hd.	4
23	12 445 05	Strap-Lifting	1
24	24 393 12	Cover-Pump, Fuel (Incl. Ref. #25 & 26)	1
25	X-380-1	Connector-Straight	1
26	25 155 02	Connector 90°	1
27	24 227 02	ASM-Cap, Oil Fill (Incl. Ref. #28)	1
28	24 153 09	O-Ring	1
29	24 402 03	Reed-Breather	1
30	12 018 01	Retainer-Breather, Reed	1
31	M-545010	Screw-Hex. Flange Hd.	1
32	24 050 01	Filter-Breather	1
33	24 033 01	Kit-Breather (Incl. Ref. #34-36)	1
34	X-75-23	Plug	1
35	24 041 23	Gasket-Breather	1
36	24 096 58	Cover-Breather	1
37	M-645020	Screw-Hex. Flange Hd.	4
38	X-426-9	Clamp-Breather	1
39	24 326 31	Hose-Breather	1

*Not Illustrated

Note: Obtain these items directly from Kohler Co., Kohler, WI 53044 1-800-544-2444



T-3258

IGNITION & ELECTRICAL SYSTEM

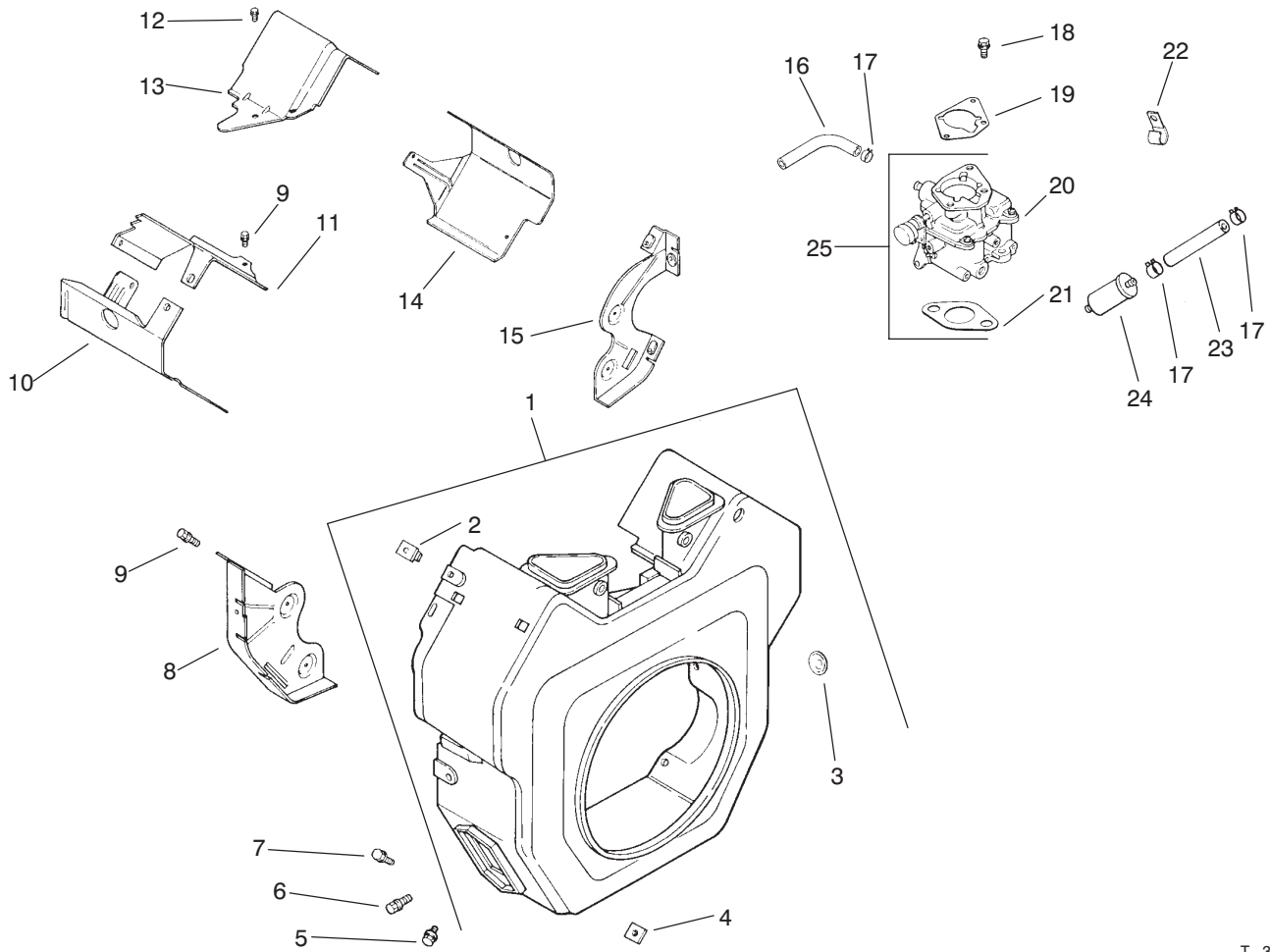
Ref. No.	Part No.	Description	No. Used
1	54 755 09	Kit—Stator, 15 Amp (Incl. #24 126 71 Bracket)	1
2	M-548025	Screw—HH	2
3	24 154 03	Clip—Cable	1
4	24 584 01	Module—Ignition	2
5	M-545020	Screw—Hex. Socket Hd.	4
6	24 025 10	Flywheel	1
7	25 099 04	ASM—Switch (Incl. Ref. #8-10)	1
8	48 468 02	Washer	1
9	48 100 01	Nut—Switch	1
†10	63-8360	Key—Switch	2
11	X-42-15	Key	1
12	12 468 03	Washer—Plain	1
13	12 086 14	Screw—Hex. Flange Hd.	1
14	24 157 01	Fan	1
15	25 086 47	Bolt—Shoulder	4
16	24 162 03	Screen—Grass	1
17	24 018 03	Retainer	3
18	24 086 18	Screw—Phillips Hd.	2

Ref. No.	Part No.	Description	No. Used
19	X-25-92	Washer—Plain	2
20	25 403 03	Rectifier—Regulator 15 Amp	1
21	236602	Connector (3 Contact)	1
22	12 132 02	Plug—Spark	2
23	235173	Clip—Cable	1
24	X-25-63	Washer—Plain	1
25	48 154 02	Clip—Cable	1
*	25 518 28	Lead—Black	1
*	X-22-11	Washer—Lock (For ground screw & wire)	1
*	24 113 03	Decal—Switch, Key	1
*	24 126 71	Bracket—Wire, Stator	1
*	54 755 02	Kit—Harness, Wire (Incl. Items Listed Below)	1
*	15 452 01	Terminal	2
*	24 176 41	Lead—Duplex	1
*	24 176 50	Harness—Wiring	1
*	24 518 07	Lead—Violet	1
*	X-468-1	Tie—Cable	3

*Not Illustrated

†Obtain from The Toro Company

Note: Obtain these items directly from Kohler Co., Kohler, WI 53044 1-800-544-2444



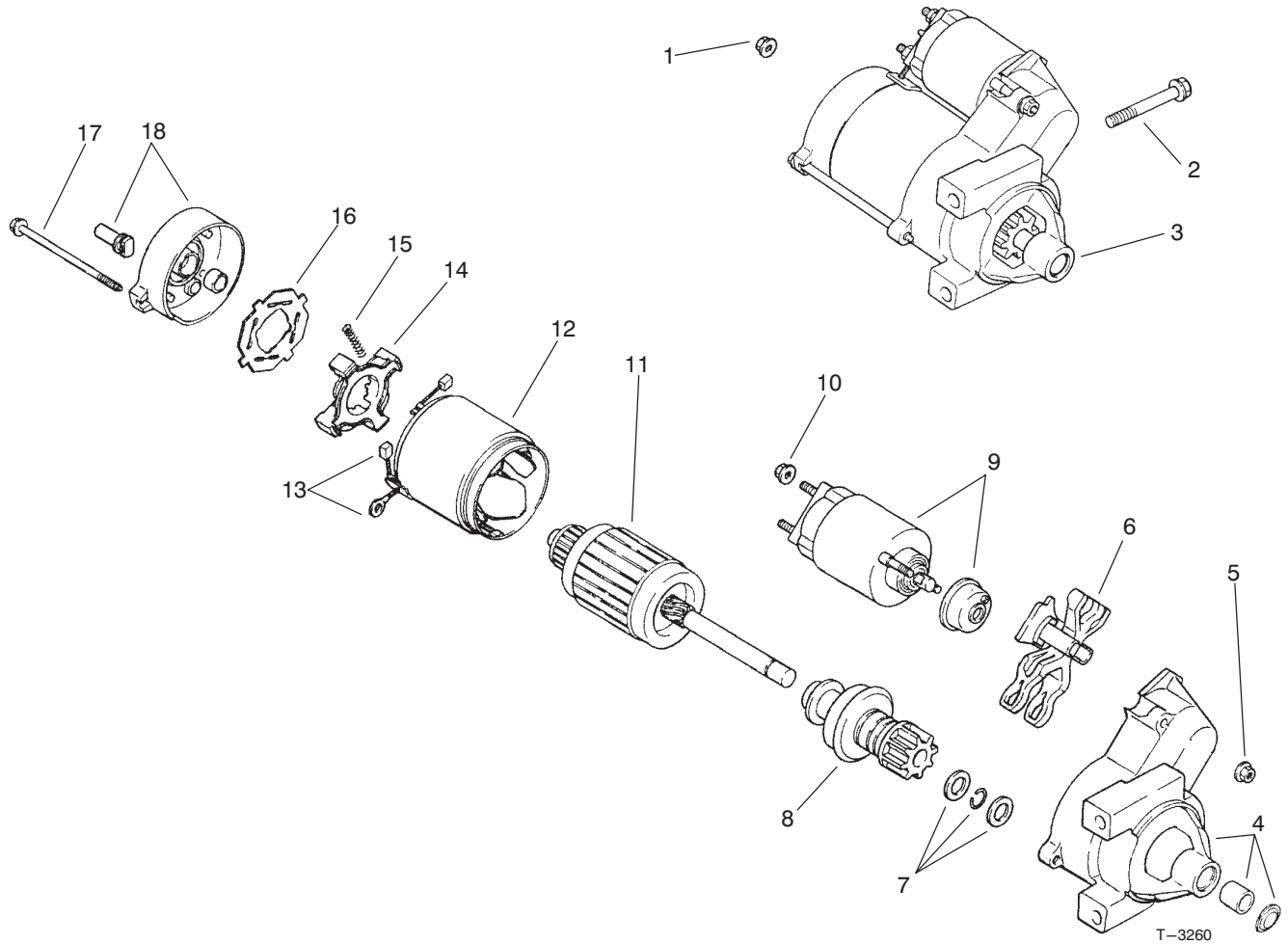
T-3259

BLOWER HOUSING, BAFFLES & FUEL SYSTEM

Ref. No.	Part No.	Description	No. Used	Ref. No.	Part No.	Description	No. Used
1	24 027 20	Housing—Blower (Incl. Ref. #2-40)	1	17	X-426-9	Clamp—Hose	4
2	24 100 02	Nut—Plastic	2	18	M-651030	Screw—Hex. Flange Hd.	2
3	25 139 16	Plug—Button	1	19	24 041 06	Gasket—Base, Air Cleaner	1
4	24 100 01	Nut—Plastic	3	20	24 053 59	ASM—Carburetor	1
5	M-551016	Screw—Hex. Flange Hd.	1	21	24 041 17	Gasket—Carburetor	1
6	M-545016	Screw—Hex. Flange Hd.	3	22	47 154 01	Clip—Cable	1
7	M-567020	Screw—Hex. Flange Hd.	4	23	24 35311	Line—Fuel	1
8	24 146 16	Plate—Backing #2 Side	1	24	24 050 02	Filter—Fuel	1
9	M-645016	Screw—Hex. Flange Hd.	6	25	24 853 59	Kit—Carburetor (Incl. Ref. #19-21)	1
10	24 063 20	Baffle—Cyl. Barrel #2 Side	1	*	24 757 01	Kit—Solenoid	1
11	24 063 17	Baffle—Valley #2 Side	1	*	24 757 02	Kit—Repair, Float	1
12	M-545010	Screw—Hex. Flange Hd.	2	*	24 757 03	Kit—Repair, Carburetor	1
13	24 063 24	Baffle—Valley #1 Side	1	*	24 757 07	Kit—Repair, Choke (Incl. Ref. #24 173 02)	1
14	24 063 08	Baffle—Cyl. Barrel #1 Side	1			Cap—Choke Lever	1
15	24 146 20	Plate—Backing #1 Side	1	*	24 113 71	Decal 22 HP	1
16	24 353 12	Line—Fuel	1				

*Not Illustrated

Note: Obtain these items directly from Kohler Co., Kohler, WI 53044 1-800-544-2444

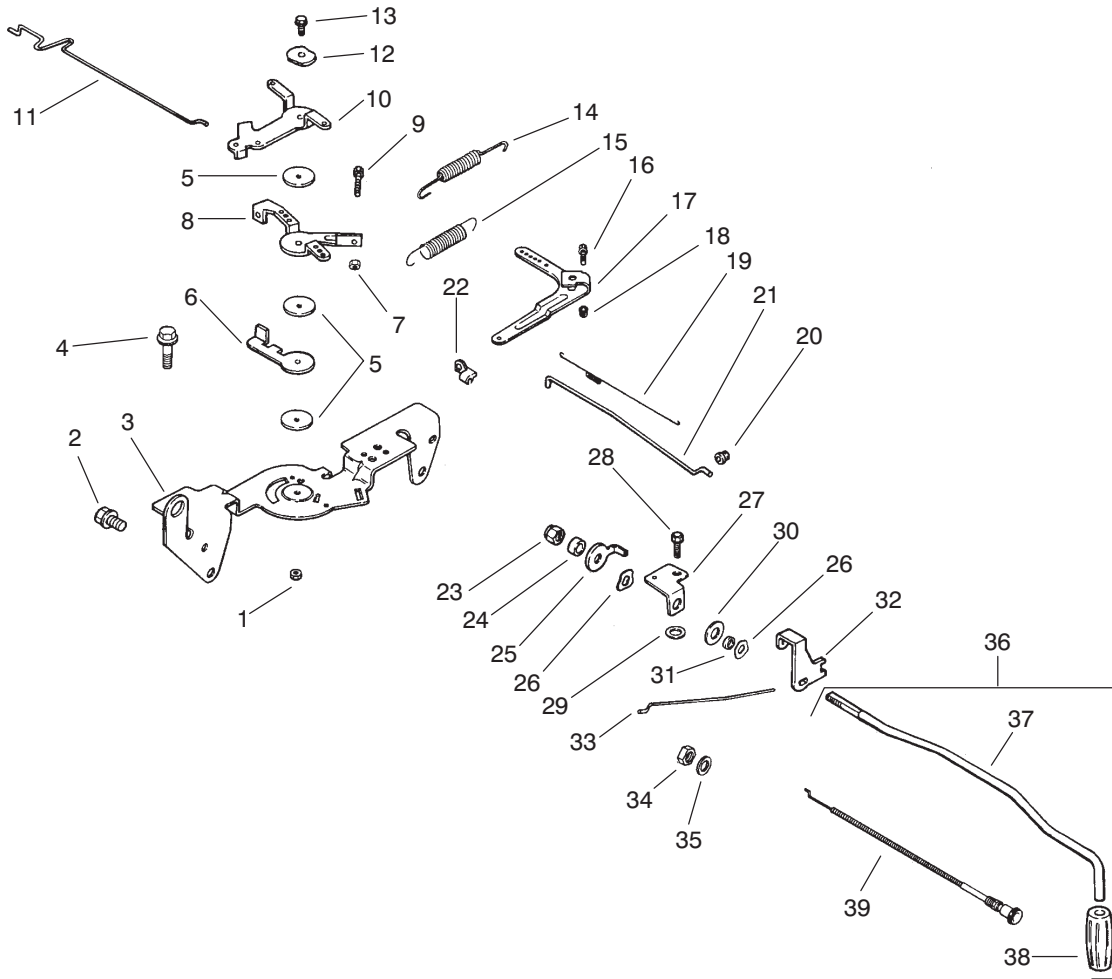


STARTING SYSTEM

Ref. No.	Part No.	Description	No. Used
1	M-841080	Nut-Hex. Flange	1
2	M-839080	Screw-Hex. Flange Hd.	2
3	24 098 01	ASM-Solenoid Shift (Incl. Ref. #4-18)	1
4	24 081 04	Cap-Drive End	1
5	52 100 10	Nut-Starter	2
6	12 090 10	Lever-Starter Drive	1
7	24 755 84	Kit-Repair, Starter	1
8	12 239 01	Pinion-Drive	1
9	52 435 02	Solenoid	1

Ref. No.	Part No.	Description	No. Used
10	52 100 09	Nut-Starter	1
11	12 170 04	Armature-Starter	1
12	12 471 01	Frame	1
13	52 221 01	Kit-Brush & Spring (Incl. Ref. #150)	1
14	52 323 03	Holder-Brush	1
15	52 089 09	Spring-Brush	4
16	52 168 01	Insulator	1
17	52 211 05	Bolt	2
18	24 301 01	Cap-End, Commutator	1

Note: Obtain these items directly from Kohler Co., Kohler, WI 53044 1-800-544-2444



T-3261

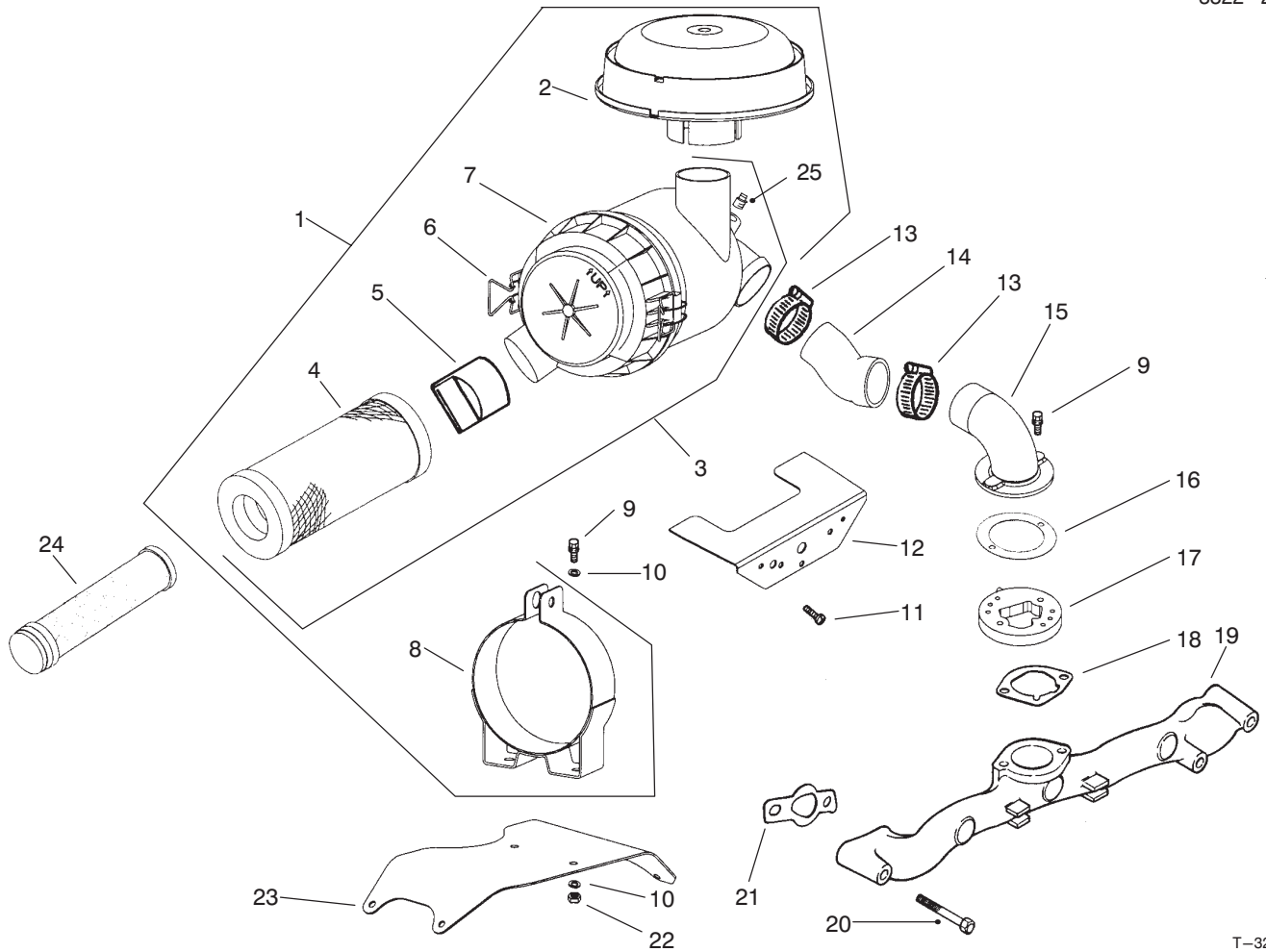
ENGINE CONTROLS

Ref. No.	Part No.	Description	No. Used
1	M-547050	Nut-Hex.	1
2	M-645016	Screw-Hex. Flange Hd.	4
3	24 126 56	Bracket-Control	1
4	M-545016	Screw-Hex. Flange Hd.	1
5	24 468 01	Washer-Plain	3
6	24 090 07	Lever-Actuator, Throttle	1
7	M-446030	Nut-Hex.	1
8	24 090 03	Lever-Control, Throttle	1
9	M-401030	Screw-HH	1
10	24 090 05	Lever-Choke	1
11	24 079 02	Linkage-Choke	1
12	41 468 03	Washer-Spring	1
13	M-545020	Screw-Hex. Flange	1
14	24 089 38	Spring-Limiter, Throttle	1
15	24 089 18	Spring-Governor	1
16	M-642025	Screw-Hex. Flange	1
17	24 090 14	Lever-Governor	1
18	M-641060	Nut-Flange	1
19	24 089 01	Spring-Linkage	1
20	25 158 08	Bushing-Retainer, Linkage	1
21	24 079 01	Linkage-Throttle	1
22	25 158 11	Bushing-Retainer, Linkage	1

Ref. No.	Part No.	Description	No. Used
23	M-647060	Nut-Hex.	1
24	25 112 04	Spacer	1
25	52 448 02	Tab-Locking	1
26	24 468 03	Washer-Wave	2
27	24 126 06	Bracket-Shaft, Speed Control	1
28	M-545010	Screw-Hex. Flange	2
29	M-631005	Washer-Plain	1
30	X-25-37	Washer-Plain	1
31	25 431 01	Spacer	1
32	24 090 22	Lever-Shaft, Speed Control	1
33	24 079 03	Linkage-Speed Control	1
34	X-83-4	Nut-Hex.	1
35	X-25-63	Washer-Plain	1
36	24 755 48	Kit-Speed Control (Incl. Ref. #23, 24, 26, 30, 31, 37 & 38)	1
37	24 144 20	Shaft-Speed Control	1
38	24 341 02	Knob-Speed Control	1
39	24 225 01	Cable-Choke	1
*	24 113 06	Decal-Panel, Control	1

*Not Illustrated

Note: Obtain these items directly from Kohler Co., Kohler, WI 53044 1-800-544-2444



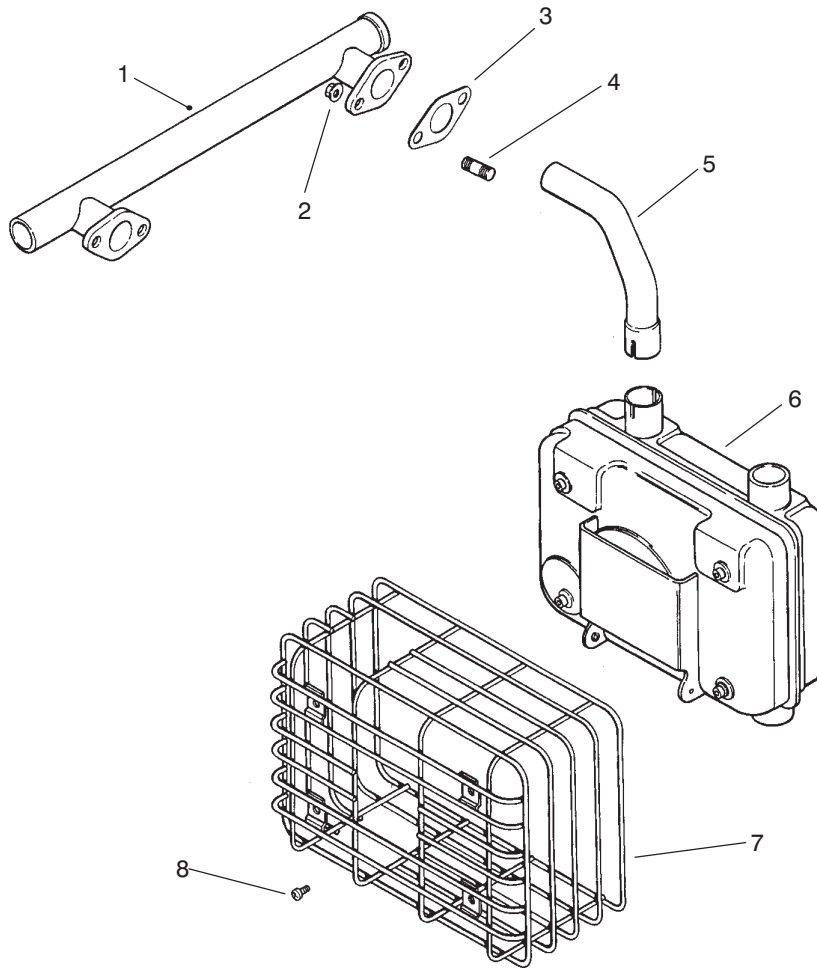
T-3262

AIR INTAKE, FILTRATION, & EXHAUST

Ref. No.	Part No.	Description	No. Used	Ref. No.	Part No.	Description	No. Used
1	24 743 22	Kit—Air Cleaner, High Density (Incl. Ref. #2-80)	1	13	X-426-9	Clamp—Hose	2
2	25 324 02	Hood—Air Cleaner	1	14	24 326 32	Hose—Air Cleaner	1
3	25 048 02	ASM—Air Cleaner (Incl. Ref. #4-7)	1	15	24 029 21	Adaper—Air Cleaner, Remote	1
4	25 063 01	Element—Primary, Air Cleaner	1	16	24 041 34	Gasket—Adapter	1
5	24 462 07	Valve—Dust Ejector	1	17	24 029 31	ASM—Adapter	1
6	25 154 05	Clip	1	18	24 041 06	Gasket—Base, Air Cleaner	1
7	25 096 06	ASM—Cover, Air Cleaner	1	19	24 164 14	Manifold—Intake	1
8	25 126 02	Bracket—Air Cleaner	1	20	M-651055	Screw—Hex. Flange	4
9	M-639016	Screw—Hex. Flange	4	21	24 041 01	Gasket—Intake, Manifold	2
10	X-25-73	Washer—Plain	4	22	M-647060	Nut—Hex.	2
11	24 086 06	Screw—Phillips Hd.	2	23	24 126 80	Bracket—Air Cleaner	1
12	24 314 25	Shield—Debris	1	24	25 083 04	Element—Air Cleaner, Safety	1
				25	285-17	Plug	1
				*	12 113 04	Decal—Air Cleaner	1

*Not Illustrated

Note: Obtain these items directly from Kohler Co., Kohler, WI 53044 1-800-544-2444



T-3263

EXHAUST ASSEMBLY

Ref. No.	Part No.	Description	No. Used
1	24 164 11	Manifold—Exhaust	1
2	M-841080	Nut—Hex. Flange	4
3	24 041 02	Gasket—Exhaust	2
4	25 072 04	Stud	4
5	24 382 04	Pipe—Exhaust	1

Ref. No.	Part No.	Description	No. Used
6	24 068 14	Muffler—Side Mount	1
7	24 314 03	Guard—Muffler	1
8	M-550010	Screw—Hex. Flange	4
*	12 189 02	Spark Arrestor (Optional)	1

Note: Obtain these items directly from Kohler Co., Kohler, WI 53044 1-800-544-2444

TORO PART NUMBER INDEX

Part No.	Description	Pg. No.	Ref. No.	Qty.	Part No.	Description	Pg. No.	Ref. No.	Qty.
3-3107	Hose	13	17	1	13-4560	Weight-Flap	16	48	18
3-3107	Hose	1	24	1	13-4560	Weight-Flap	4	48	18
3-3175	Cover-Battery	14	39	1	13-4570	Sprocket-Idler	7	52	1
3-5967	Support-Battery	14	37	2	13-4590	Chain	7	53	1
3-8135	Spring	14	48	2	13-4700	Flap	16	47	1
3-9155	Key-Square	18	32	1	13-4700	Flap-Rubber	4	47	1
4-1920	Washer	18	38	1	13-4800	Guard-Belt	17	54	1
5-0678	Rod-Clamp, Battery	15	51	2	13-4800	Guard-Belt	5	57	1
5-0738	Key-Square	6	14	4	13-4880	Sprocket	3	24	1
12-8810	Spring	9	21	2	13-4960	Shaft-Plate, Finger	10	22	6
13-0050	Spring	3	29	2	13-5500	Bell Crank-Lift, LH	3	28	1
13-0050	Spring	14	45	2	13-5500	Bell Crank-Lift, LH	14	44	1
13-0100	Block-Pivot	3	13	2	13-5520	Spacer	14	9	2
13-0100	Block-Pivot	14	16	2	13-5520	Spacer	3	9	2
13-0320	Collar-Lock	10	45	2	13-5530	Rod-Adjustment, Spring	3	30	2
13-0330	Block-Pivot	16	40	1	13-5530	Rod-Adjustment, Spring	14	46	2
13-0330	Block-Pivot	10	47	2	13-5540	Link-Lift	10	39	2
13-0330	Block-Pivot	4	40	1	13-5550	Arm-Gauge Wheel	10	48	2
13-0360	Spacer	10	36	2	13-5570	Bar-Pivot	10	49	2
13-0480	Spring	3	25	1	13-5590	Rod-Adjustment	11	51	2
13-0480	Spring	14	41	1	13-5670	Spacer-Locking	11	52	2
13-0560	Spacer	10	34	2	13-5680	Asm-Jack	12	13	1
13-0600	Pulley-Idler	14	32	1	13-5790	Shield-Shaft, Side	2	50	1
13-1390	Retainer-Flap	16	50	1	13-5870	Shield-Front	2	48	1
13-1390	Retainer-Flap	4	50	1	13-5880	Shield-Shaft, Drop	2	49	1
13-1420	Cover-Inspection	16	30	1	13-5900	Shaft-Drive, Front	6	21	1
13-1420	Cover-Inspection	4	30	1	13-5910	Shaft-Drive, Side	6	13	1
13-2240	Key-Square	16	5	1	13-6000	Base-Box, Gear	1	23	1
13-2240	Key-Square	4	5	1	13-6020	Sheave	6	4	1
13-2480	Clamp-Finger	10	31	276	13-6030	Pulley	4	4	1
13-2640	Belt	5	59	1	13-6050	Bushing	6	3	1
13-2650	V-Belt	18	31	1	13-6070	Bushing	4	3	1
13-2670	Sheave	15	64	1	13-6090	Cover-Guard, Side	5	52	1
13-2680	Bushing	10	10	1	13-6110	Sprocket	6	7	1
13-2680	Bushing	14	27	1	13-6120	Frame	1	18	1
13-2800	Pulley	16	4	1	13-6200	Pin-Hitch	2	46	1
13-2810	Key-Square	16	9	1	13-6200	Pin-Hitch	15	57	1
13-2810	Key-Square	4	9	1	13-6240	Rod-Adjustment	1	20	1
13-2840	Key-Square	10	23	1	13-6260	Screw	3	8	2
13-2870	Wheel-Gauge	11	50	2	13-6260	Screw-Adjustment	14	8	2
13-2930	Decal-Slow Moving Vehicle	9	10	1	13-6280	Blower	16	33	1
13-2970	Bushing	16	3	1	13-6280	Blower and Throat	4	33	1
13-3070	Spacer	10	37	2	13-6330	Key-Square	14	3	1
13-3090	Spring	10	30	66	13-6360	Rod-Lift	16	38	1
13-3130	Flap-End	16	45	2	13-6360	Rod-Lift, Flap	4	38	1
13-3130	Flap-End	4	45	2	13-6390	Handle-Flap	16	35	1
13-3320	Pulley	18	39	1	13-6390	Handle-Flap	4	35	1
13-3330	Bushing	18	33	1	13-6410	Decal	4	13	1
13-3350	Bracket-Mounting	4	10	1	13-6410	Decal	16	15	1
13-3350	Mounting Bracket	16	10	1	13-6440	Asm-Wheel	12	*	1
13-3420	Asm-Fan	16	21	1	13-6450	Bracket-Wheel, Caster	12	8	1
13-3420	Asm-Fan	4	21	1	13-6460	Wheel	12	6	1
13-3490	Sleeve	12	16	1	13-6490	Gasket-.002 Thk.	8	5	A/R
13-3510	Bearing-Thrust	12	11	1	13-6520	Seal	8	3	2
13-3610	Sleeve-Felt	12	12	1	13-6540	Shim-.010 Thk.	8	20	A/R
13-3710	Washer	15	68	1	13-6590	Gasket-.015 Thk.	8	8	A/R
13-3710	Washer-Flat	9	25	2	13-6600	Gasket-.005 Thk.	8	7	A/R
13-3710	Washer-Special	3	37	1	13-6610	Gasket-.003 Thk.	8	6	A/R
13-3720	Key-Square	6	10	1	13-6630	Shim-.005 Thk.	8	21	A/R
13-3790	Shaft-Fan	4	6	1	13-6650	Housing	8	13	1
13-3790	Shaft-Fan	16	6	1	13-6670	Pin-Connector	7	50	1
13-3850	Plate-Blower Access	16	12	1	13-6680	Chain	7	49	1
13-3850	Plate-Blower Access	4	12	1	13-6690	Coupling Half	6	15	2
13-3930	Tank-Gas	13	23	1	13-6700	Finger-Nylon	10	29	276
13-3960	Asm-Strap	13	25	2	13-6730	Rivet	12	14	1
13-3970	Felt Strip	13	26	2	13-6740	Handle	12	15	1
13-3970	Strip-Felt	13	29	2	13-6750	Ram	12	10	1
13-3990	Handle-Trip	3	26	1	13-6760	Decal-Caution	9	6	1
13-3990	Handle-Trip	14	42	1	13-6790	Cable-Battery	14	47	2
13-4310	Tongue	2	45	1	13-6890	Guide-Rope	13	15	1
13-4490	Guard-Sheave	3	31	1	13-6890	Guide-Rope	1	33	1
13-4490	Guard-Sheave	15	55	1	13-6910	Spacer-Guide, Rope	13	14	1

*Not Illustrated

TORO PART NUMBER INDEX (Cont.)

Part No.	Description	Pg. No.	Ref. No.	Qty.	Part No.	Description	Pg. No.	Ref. No.	Qty.
13-6910	Spacer-Guide, Rope	1	32	1	93-0197	Flex Tip-Reel	10	26	1
13-7330	Stiffener-RH	9	*	1	93-0198	Bracket-Support, Muffler	18	18	1
13-7340	Stiffener-LH	9	16	1	93-0199	Strap-Muffler Support	18	23	1
13-7430	Decal-Warning	9	14	1	93-4000	Strap-Muffler Support	18	22	1
13-7460	Plate-Caution, Hitch	13	37	1	93-4001	Pulley-4 Groove	10	3	1
13-7460	Plate-Caution, Hitch	2	43	1	93-4003	Gate	9	13	1
20-9580	Rope	13	13	1	93-4009	Main Frame	13	11	1
20-9580	Rope-Latch	1	31	1	93-4020	Cover-Inspection	5	61	1
32104-109	Screw	13	33	1	93-4020	Cover-Inspection	17	67	1
42-1860	Asm-Front Shaft	6	36	1	93-4030	Strap-Hopper, Front	9	31	2
42-1870	Asm-Rear Shaft	6	19	1	93-4031	Strap-Hopper, Top	9	18	4
42-2290	Yoke and Tube	6	44	1	93-4032	Shaft-Jack	3	1	1
42-2300	Yoke and Shaft	7	46	1	93-4032	Shaft-Jack	14	1	1
42-2310	Yoke-Front	6	29	1	93-4033	Pulley-Driver	3	36	1
42-2340	Centralizer-Guard	6	33	1	93-4033	Pulley-Driver	15	67	1
42-2350	Shield-Inner	6	37	1	93-4034	V-Belt	10	2	1
42-2360	Asm-Yoke & Tube	6	25	1	93-4041	Decal-Op. Instructions	16	20	1
42-2370	Yoke and Shaft	6	26	1	93-4041	Decal-Op. Instructions	4	20	1
42-2380	Shield-Outer	6	31	1	93-4042	Support	9	19	2
46-6810	Screw	18	19	2	93-4409	Tongue	15	61	1
47-2830	Screw-Machine	18	11	8	93-4415	Pulley-Idler	11	54	1
53-4420	Decal-Gas	13	28	1	93-4416	Bracket-Support, Muffler	18	16	1
55-7290	Battery	14	38	1	93-4417	U-Bolt	18	14	1
56-6210	Bearing	14	24	2	93-4418	Guard-Manifold, Exhaust	18	5	1
56-6220	Bearing	16	25	2	93-4419	Guard-Muffler, Rear	18	12	1
56-6220	Bearing	4	25	2	93-4422	Guard-Belt	10	1	1
56-6230	Bearing	10	21	2	93-4428	Spacer-Pulley	10	12	1
56-6230	Bearing	3	35	2	93-4429	Washer-Pulley	11	60	1
56-6230	Bearing	15	66	2	93-4430	Shaft	8	12	1
56-6250	Bearing	6	8	4	93-4433	Pulley Bracket	10	17	1
59-1460	Plug-Vent	8	26	1	93-4434	Support Bracket	10	13	1
61-5950	Decal	14	40	1	93-4438	Bracket-Belt Guard	3	40	1
63-5210	Spindle-Driveside	15	65	1	93-4438	Bracket-Belt Guard	15	71	1
63-5210	Spindle-Driveside	3	34	1	93-4440	Bell Crank-Lift, RH	3	18	1
63-5250	Spacer	11	56	1	93-4440	Bell Crank-Lift, RH	14	21	1
63-5300	Trailing Arm-LH	10	41	1	93-4445	Trailing Arm-RH	10	11	1
63-8360	Key	18	7	2	93-7307	Decal-Warning	16	19	1
65-5871	Tube-Manual	9	34	1	93-7307	Decal-Warning	4	19	1
65-5890	Cap-Tube	9	35	2	93-7703	Plate-Clamp Guard	18	2	2
67-5360	Decal	16	11	1	93-7706	Tube-Spacer	14	33	1
67-5360	Decal	4	11	1	93-7707	Shield-Belt Guard	17	69	1
67-5360	Decal	13	39	1	93-7708	Strip-Sealing	9	42	1
67-5360	Decal-Caution	1	19	4	93-7708	Strip-Sealing	5	62	1
67-7490	Key-Square	3	3	1	93-7708	Strip-Sealing	17	68	1
67-7920	Decal-Toro	9	17	2	93-7709	Pad	13	27	1
68-3220	Key-Square	14	2	1	93-7709	Pad	2	41	1
68-3220	Key-Square	3	2	1	93-7711	Hook-Transport	10	33	2
70-2350	Gear Box-Complete	6	17	1	93-7715	Ball Bearing	11	62	4
70-2360	Cap	8	17	1	94-1756	Asm-Muffler Clamp	18	4	2
70-2370	Gear-23 Tooth	8	23	1	94-4522	Hose-Fuel Line	13	34	1
70-2380	Key-Tapered	8	16	2	94-9128	Panel-Front	9	5	2
70-2390	Shaft	8	24	1	94-9129	Panel-LH	9	3	1
70-2410	Ring-Retaining	8	25	3	94-9133	Panel-RH	9	*	1
70-2420	Cap	8	4	2	94-9135	Panel-Top	9	2	1
70-2440	Collar-Thrust	8	11	1	94-9137	Panel-Bottom, (RH)	9	29	1
70-2450	Gear-17 Tooth	8	15	1	94-9138	Panel-Bottom, (Middle)	9	28	1
92-1187	Kit-Quick Disconnect	7	*	1	94-9139	Panel-Bottom, LH	9	23	1
92-1580	Kit-Bearing, Shield	6	32	2	94-9141	Screen-Top	9	1	2
92-1581	Decal-Safety	7	58	1	95-3112	Flap-Lower	16	44	1
92-1582	Decal-Safety	6	35	1	95-3112	Flap-Lower	4	44	1
92-2409	Asm-Hopper	9	*	1	95-3114	Hinge-Continuous	5	63	1
92-8309	Decal-Warning	16	18	1	95-3114	Hinge-Continuous	17	72	1
92-8309	Decal-Warning	4	18	1	217-103	Bolt-Wheel	13	3	12
93-0181	Tire	13	4	2	217-103	Bolt-Wheel	1	8	12
93-0181	Tire	1	7	2	2112-11	Clamp-Muffler	18	26	1
93-0182	Asm-Wheel	13	6	2	2115-76	Kit-Center Parts	6	43	2
93-0182	Asm-Wheel	1	10	2	2115-78	Ring-Lock	7	47	8
93-0183	Belt	17	57	1	2115-79	Ring-Lock	6	27	8
93-0184	Decal-Hopper	9	33	2	2115-80	Fitting-Grease	6	20	4
93-0185	Asm-Center Plate, Stake	10	27	60	2115-81	Yoke	6	42	2
93-0187	Asm-End Plate, Stake	10	28	3	2115-85	Fitting-Grease	6	34	1
93-0189	Asm-End Plate, Stake	10	25	3					

*Not Illustrated

TORO PART NUMBER INDEX (Cont.)

Part No.	Description	Pg. Ref. No. No. Qty.	Part No.	Description	Pg. Ref. No. No. Qty.
2115-88	Kit-Bearing & Cross	6 30 2	323-5	Screw-HH	14 49 4
2115-94	Yoke-Rear	6 38 1	323-5	Screw-HH	11 63 3
222-8	Cap-Gas	13 24 1	323-6	Screw-HH	16 34 8
232-27	Stem-Valve	13 5 2	323-6	Screw-HH	4 34 8
232-27	Stem-Valve	1 9 2	323-6	Screw-HH	9 38 4
235-15	Grip-Handle	13 19 1	323-7	Screw-HH	4 15 6
235-15	Grip-Handle	1 28 1	323-7	Screw-HH	17 56 6
242-54	Hub	13 7 2	323-8	Screw-HH	13 22 1
242-54	Wheel-Hub	1 11 2	323-8	Screw-HH	1 25 1
242-55	Cap-Hub	1 1 2	323-9	Screw-HH	18 9 4
242-55	Cap-Hub	13 43 2	323-9	Screw-HH	16 41 1
2412-40	Clamp-Conduit	13 16 3	323-9	Screw-HH	4 41 1
2412-40	Clamp-Conduit	1 34 3	323-9	Screw-HH	10 44 5
2412-93	Clamp	13 36 1	323-10	Screw-HH	18 37 1
2412-102	R-Clamp	9 36 2	323-10	Screw-HH	11 61 1
2412-103	R-Clamp	18 30 1	324-7	Screw-HH	14 10 3
2412-108	Clamp-Hose	13 31 2	324-7	Screw-HH	3 10 3
250-5	Strap-Locking	14 36 2	324-10	Screw-HH	3 41 1
251-246	Collar-Locking, Eccentric	6 22 4	324-10	Screw-HH	15 60 1
253-127	Seal	13 10 2	325-3	Screw-HH	1 15 2
253-127	Seal	1 14 2	325-4	Screw-HH	6 18 4
254-57	Cup-Bearing	8 9 3	325-5	Screw-HH	1 22 4
254-58	Cone-Bearing	8 10 3	325-5	Screw-HH	6 39 4
254-61	Cup-Bearing	1 6 2	325-5	Screw-HH	2 52 4
254-61	Cup-Bearing	13 40 2	325-5	Screw-HH	11 55 1
254-61	Cup-Bearing	8 18 1	325-6	Screw-HH	6 12 4
254-62	Cone-Bearing	13 2 2	325-6	Screw-HH	16 24 7
254-62	Cone-Bearing	1 5 2	325-6	Screw-HH	4 24 7
254-62	Cone-Bearing	8 19 1	325-6	Screw-HH	9 27 3
254-65	Cone-Bearing	13 9 2	325-7	Screw-HH	9 41 2
254-65	Cone-Bearing	1 13 2	325-7	Screw-HH	17 58 1
254-66	Cup-Bearing	13 8 2	325-7	Screw-HH	5 60 1
254-66	Cup-Bearing	1 12 2	325-9	Screw-HH	10 43 4
256-298	Bushing	11 59 2	325-12	Screw-HH	7 55 1
2710-29	Link-Offset	7 56 1	325-13	Screw-HH	12 9 1
2710-30	Link-Connecting	7 54 1	325-14	Screw-HH	10 8 2
282-22	Clevis	3 16 2	325-20	Screw-HH	14 13 1
282-22	Clevis	14 19 2	327-6	Screw-HH	10 18 1
283-2	Pin-Clevis	3 15 2	327-6	Screw-HH	15 62 2
283-2	Pin-Clevis	14 18 2	328-10	Bolt-HH	10 40 1
283-39	Pin-Clevis	9 11 3	328-23	Bolt-HH	2 36 2
283-46	Pin-Clevis	6 40 1	3217-5	Nut-Hex	17 51 2
285-12	Plug-Pipe	8 14 2	3217-5	Nut-Hex.	5 51 2
302-2	Fitting-Grease	7 45 1	3217-5	Nut-Hex.	15 54 4
302-5	Fitting-Grease	11 58 2	3217-7	Nut-Hex	4 8 1
304-75	Fitting-Tube	13 30 1	3217-7	Nut-Hex.	12 4 3
321-3	Screw-HH	16 43 20	3217-7	Nut-Hex.	16 8 1
321-3	Screw-HH	4 43 20	3217-7	Nut-Hex.	10 9 4
321-4	Screw-HH	16 14 4	3217-8	Nut-Hex.	3 20 4
321-4	Screw-HH	4 14 4	3217-8	Nut-Lock	14 26 5
321-4	Screw-HH	3 39 1	3217-9	Nut-Hex	1 35 4
321-4	Screw-HH	5 53 2	3217-9	Nut-Hex.	6 9 5
321-4	Screw-HH	17 55 2	3217-9	Nut-Hex.	11 53 2
321-4	Screw-HH	15 69 1	3217-12	Nut-Hex	2 38 2
321-5	Screw-HH	16 46 14	3218-3	Nut-Jam	14 5 6
321-5	Screw-HH	4 46 14	3218-3	Nut-Jam	3 5 8
321-6	Screw-HH	18 35 3	3218-3	Nut-Jam	6 5 6
321-8	Screw-HH	16 49 18	3218-3	Nut-Jam	13 21 1
321-8	Screw-HH	4 49 18	3218-3	Nut-Jam	1 26 1
321-13	Screw-HH	4 1 3	3218-5	Nut-Hex.	4 17 4
322-1	Screw-HH	5 54 1	3218-5	Nut-Hex.	14 34 2
322-5	Screw-HH	8 1 24	3218-5	Nut-Jam	16 17 4
322-6	Screw-HH	18 13 2	3218-6	Nut-Jam	1 21 1
322-7	Screw-HH	16 1 3	3218-6	Nut-Jam	16 39 2
322-7	Screw-HH	6 1 3	3218-6	Nut-Jam	4 39 2
322-7	Screw-HH	14 29 3	3219-3	Nut-Hex	14 17 2
322-7	Screw-HH	3 33 2	3219-3	Nut-Hex.	3 14 2
322-7	Screw-HH	15 63 2	3229-7	Bolt-Carriage	9 15 50
323-2	Screw-HH	2 39 6	3234-33	Screw-HFH	9 4 96
323-4	Screw-HH	12 1 3	3234-33	Screw-HH	17 70 2
323-4	Screw-HH	10 4 6	3243-6	Screw-Set	14 4 2
323-5	Screw-HH	12 3 3	3243-6	Screw-Set	3 4 2

*Not Illustrated

TORO PART NUMBER INDEX (Cont.)

Part No.	Description	Pg. No.	Ref. No.	Qty.	Part No.	Description	Pg. No.	Ref. No.	Qty.
3244-14	Screw-Set, Sq. Hd.	16	16	4	3256-82	Washer-Flat	18	15	2
3244-14	Screw-Set, Square Hd.	4	16	4	3257-8	Key-Woodruff	6	23	1
3244-21	Screw-Set	14	35	2	3258-165	Screw-Rd. Hd.	9	32	2
3247-3	Screw-Set	6	16	4	3259-15	Screw-Drive	2	44	4
3247-6	Screw-Set	6	6	6	3272-6	Pin-Cotter	6	24	1
3247-6	Screw-Set	3	23	2	3272-10	Pin-Cotter	3	17	2
3250-32	Screw-Phillips Pan Hd.	9	30	9	3272-10	Pin-Cotter	14	20	2
3253-3	Washer-Lock	4	2	9	3272-10	Pin-Cotter	3	27	1
3253-3	Washer-Lock	16	13	6	3272-10	Pin-Cotter	14	43	1
3253-3	Washer-Lock	18	34	3	3272-12	Pin-Cotter	9	7	3
3253-3	Washer-Lock	3	38	1	3272-12	Pin-Cotter	16	37	1
3253-3	Washer-Lock	15	53	5	3272-12	Pin-Cotter	4	37	1
3253-4	Washer-Lock	16	2	4	3272-17	Pin-Cotter	13	1	3
3253-4	Washer-Lock	6	2	3	3272-17	Pin-Cotter	1	2	3
3253-4	Washer-Lock	18	25	2	3272-22	Pin-Cotter	3	22	2
3253-4	Washer-Lock	14	28	5	3272-22	Pin-Cotter	14	23	2
3253-4	Washer-Lock	3	32	2	3290-55	Rivet-Pop	13	38	4
3253-4	Washer-Lock	5	55	1	3290-211	Washer-Spring	15	70	1
3253-6	Washer-Lock	3	19	5	3290-343	Pin-Hair Cotter	15	58	1
3253-6	Washer-Lock	14	25	5	3290-343	Pin-Hair, Cotter	2	47	1
3253-7	Washer-Lock	10	7	2	3296-23	Nut-Lock	12	5	1
3253-7	Washer-Lock	6	11	13	3296-23	Nut-Lock	10	15	1
3253-7	Washer-Lock	1	16	6	3296-23	Nut-Lock	9	24	3
3253-7	Washer-Lock	9	40	2	3296-39	Nut-Lock	16	23	7
3253-9	Washer-Lock	2	37	2	3296-39	Nut-Lock	4	23	7
3253-21	Washer-Lock	12	2	3	3296-39	Nut-Lock	9	39	4
3253-21	Washer-Lock	10	5	7	3296-39	Nut-Lock	15	50	4
3253-21	Washer-Lock	16	7	9	3296-42	Nut-Lock	16	42	52
3253-21	Washer-Lock	4	7	9	3296-42	Nut-Lock	4	42	52
3253-21	Washer-Lock	18	36	1	3296-47	Nut-Lock	18	17	4
3253-21	Washer-Lock	2	40	6	3296-48	Nut-Lock	3	42	1
3254-2	Washer-Lock	8	2	24	3296-53	Nut-Lock	10	14	1
3254-2	Washer-Lock ITLW	18	27	1	3296-53	Nut-Lock	15	56	2
3254-8	Washer-Lock	11	57	2	32103-12	Nut-Wing	16	31	4
3256-22	Washer-Flat	16	32	32	32103-12	Nut-Wing	4	31	4
3256-22	Washer-Flat	4	32	32	32104-95	Screw-Self Tapping	13	18	2
3256-22	Washer-Flat	13	35	1	32104-95	Screw-Self-Tapping	1	29	2
3256-22	Washer-Flat	15	52	4	32104-96	Screw-Self Tapping	13	12	1
3256-23	Washer-Flat	18	40	2	32104-96	Screw-Self-Tapping	1	30	1
3256-23	Washer-Flat	17	53	1	32104-109	Screw-HH	5	58	4
3256-23	Washer-Flat	5	56	1	32121-45	Pin-Roll	10	46	2
3256-23	Washer-Flat	7	57	3	32122-42	Screw-Machine	9	22	36
3256-24	Washer-Flat	10	6	7	32128-20	Nut-Lock, Flange	18	1	4
3256-24	Washer-Flat	3	12	2	32128-29	Nut-HFH	18	10	4
3256-24	Washer-Flat	14	15	7	32128-32	Nut-Lock	9	9	193
3256-24	Washer-Flat	16	22	14	32128-32	Nut-Lock, Flange	17	71	2
3256-24	Washer-Flat	4	22	14	32128-49	Nut-HFH	14	12	1
3256-24	Washer-Flat	2	51	4	32136-1	Nut-Slotted	1	3	2
3256-26	Washer-Flat	12	7	2	32136-1	Nut-Slotted	13	42	2
3256-26	Washer-Flat	14	11	1	32140-94	Screw-HH	10	32	276
3256-26	Washer-Flat	10	16	7	32152-2	Nut-Lock	10	24	12
3256-26	Washer-Flat	1	17	6	32153-2	Nut	3	11	2
3256-26	Washer-Flat	9	26	9	32153-2	Nut	10	35	4
3256-26	Washer-Flat	7	51	8	32153-2	Nut-Lock	14	14	2
3256-27	Washer-Flat	9	8	3	32153-2	Nut-Lock	9	37	2
3256-27	Washer-Flat	16	36	1	32153-2	Nut-Lock	2	42	2
3256-27	Washer-Flat	4	36	1	32153-3	Nut-Lock	18	3	4
3256-28	Washer-Flat	13	20	1	32153-3	Nut-Lock	13	32	4
3256-28	Washer-Flat	3	21	2	32153-5	Nut	10	38	6
3256-28	Washer-Flat	14	22	2	32153-5	Nut-Lock	16	27	8
3256-28	Washer-Flat	1	27	1	32153-5	Nut-Lock	4	27	8
3256-29	Washer-Flat	1	4	2	32153-6	Nut	10	42	1
3256-29	Washer-Flat	13	41	2	33114-016	Screw-HH	18	24	3
3256-55	Washer-Flat	9	20	28					

*Not Illustrated

PRODUCT CHANGES

In an effort to make improvements available to TORO owners as quickly as possible – minor changes are incorporated into Toro's products from time to time that do not become immediately shown in the Parts Catalog. If such a change has been made in your unit – which is not reflected in your manual – see your TORO Distributor or his Authorized TORO Service Dealer for information and part numbers.

IDENTIFICATION AND ORDERING

MODEL AND SERIAL NUMBERS

The Rake—O—Vac has two identification numbers; a model number and a serial number. The two numbers are stamped on a plate which is located on the left side of the frame behind the hitch. In any correspondence concerning the Rake—O—Vac – supply model and serial numbers to assure that correct information and replacement parts are obtained.

To order replacement parts from an Authorized TORO Service Dealer – supply the following information:

1. Model and serial number of the Rake—O—Vac.
2. Part number – description – and the quantity of part(s) desired.

NOTE: Do not order by reference number if a parts catalog is being used; use the PART NUMBER.

TABLE OF CONTENTS

Description	Page	Description	Page
Frame Assembly (Model 07052)	1–2	Blower And Throat Assembly (Model 07050)	16–17
Jackshaft And Lifting Mechanism (Model 07052)	3	Engine Assembly	18
Blower And Throat Assembly (Model 07052)	4–5	Crankshaft & Crankcase	19
Drive Shafts & Gear Box (Model 07052)	6–7	Closure Plate, Oil Pump & Governor	20
Gear Box Assembly (Model 07052)	8	Clutch Assembly	21
Hopper And Rear Tailgate (Model 07050 & 07052)	9	Cylinder Head, Valve, & Breather	22
Flex Tip Reel And Trailing Arm (Model 07050 & 07052)	10–11	Ignition & Electrical System	23
Jack Assembly (Models 07050 & 07052)	12	Blower Housing, Baffles, & Fuel System	24
Frame Assembly (Model 07050)	13	Starting System	25
Jackshaft And Lifting Mechanism (Model 07050)	14–15	Engine Controls	26
		Air Intake, Filtration, & Exhaust	27
		Exhaust Assembly	28
		TORO Parts Index	29–32

MAINTENANCE RECORD

Date									

MAINTENANCE RECORD

Date								

MAINTENANCE RECORD

Date									