



Trimmer Rack

GrandStand® Mower

Model No. 133-1441

Installation Instructions

Note: If the Low Flow Hydraulic Kit is equipped on your machine, the trimmer rack cannot be installed.

1

Preparing the Machine

No Parts Required

Procedure

1. Park the machine on a level surface.
2. Disengage the PTO.
3. Move the motion-control levers to the NEUTRAL-LOCK position.
4. Engage the parking brake.
5. Shut off the engine and remove the key.

2

Installing the Trimmer Rack

Parts needed for this procedure:

1	Upper mount bracket
1	Lower mount bracket
1	Upper clamp mount
1	Lower clamp mount
1	Large clamp
1	Small clamp
1	Large backer plate
1	Small backer plate
2	Carriage bolt (5/16 inch)
2	Flange nut (5/16 inch)
1	Spacer
4	Carriage bolt (1/4 inch)
8	Flange nut (1/4 inch)
2	Hex-head bolt (1/4 x 1-1/2 inch)
3	Hex-head bolt (3/8 inch)
5	Flange nut (3/8 inch)
2	Hex-head bolt (1/4 x 1-1/4 inch)

Note: Adjust the upper and lower plates to fit your trimmer as needed.

Installing the Upper Bracket Assembly

1. Lower the rear cushion and remove the fuel tank; refer to your machine *Operator's Manual*.
2. Locate and drill a 3/8-inch hole into the pilot hole on the left side of the machine (Figure 1).



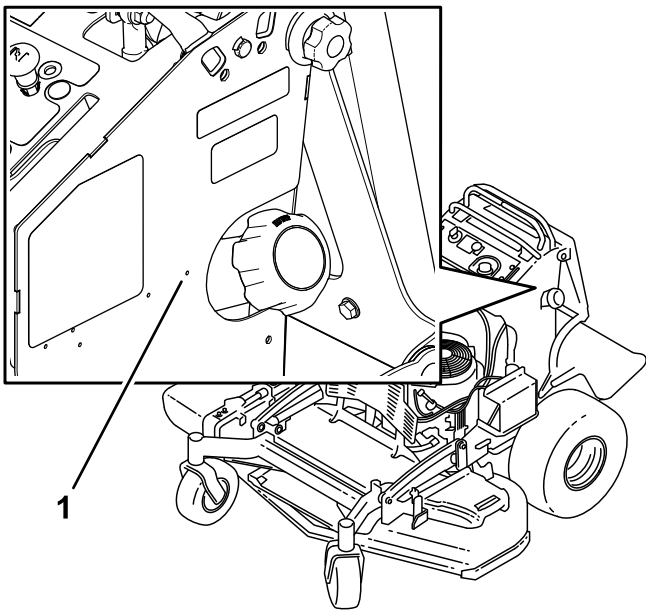


Figure 1

g230753

1. Pilot hole—drill a hole (3/8 inch) here.

3. Use 3 hex-head bolts (3/8 inch), and 3 flange nuts (3/8 inch) to secure the upper mount bracket to the machine (Figure 2).

Torque the bolts to 37 to 45 N·m (27 to 33 ft-lb).

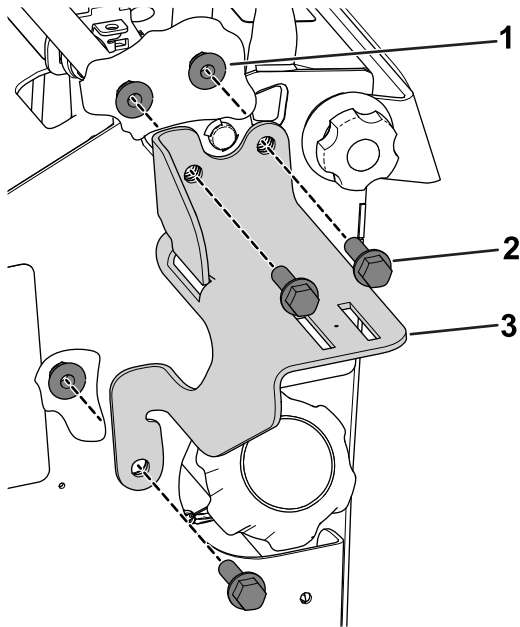


Figure 2

g230756

1. Flange nut (3/8 inch)
2. Hex-head bolt (3/8 inch)
3. Upper mount bracket

4. Use 2 carriage bolts (1/4 inch) and 2 flange nuts (1/4 inch) to secure the upper clamp mount to the upper mount bracket (Figure 3).

Torque the bolts to 10 to 12 N·m (90 to 110 in-lb).

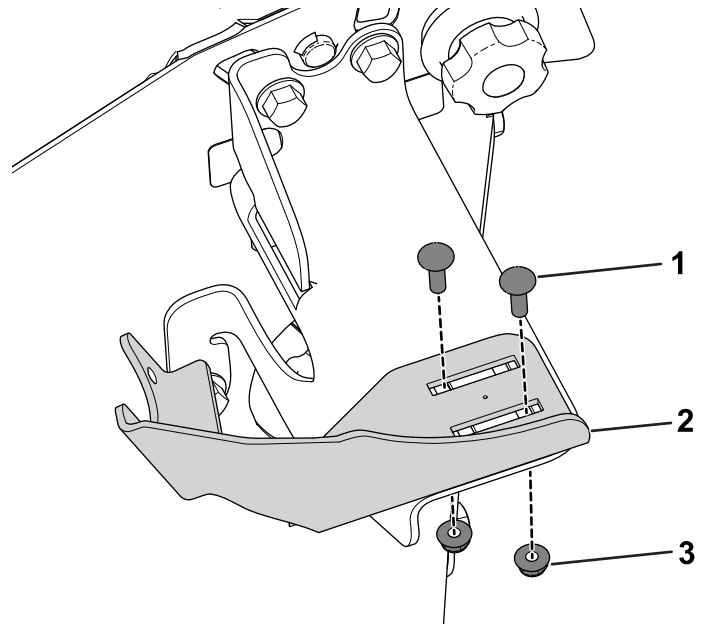


Figure 3

g230755

1. Carriage bolt (1/4 inch)
2. Upper clamp mount
3. Flange nut (1/4 inch)

5. Use 2 hex-head bolts (1/4 x 1-1/2 inch) and 2 flange nuts (1/4 inch) to secure the large backer plate and the large clamp to the upper clamp mount (Figure 4).

Torque the bolts to 10 to 12 N·m (90 to 110 in-lb).

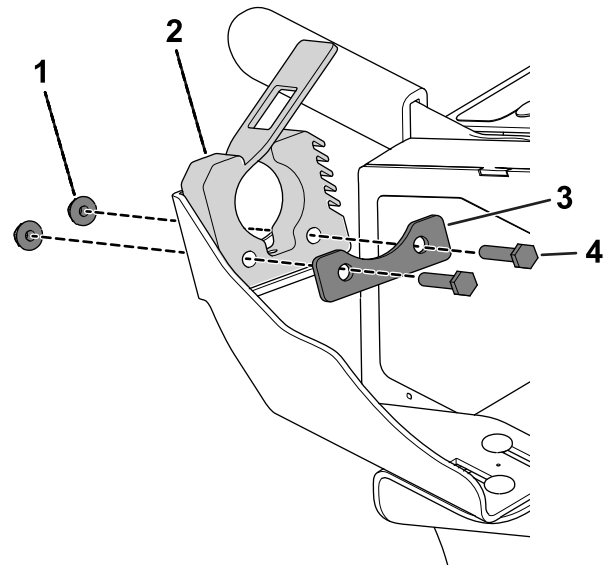


Figure 4

g230754

1. Flange nut (1/4 inch)
2. Large clamp
3. Large backer plate
4. Hex-head bolt (1/4 x 1-1/2 inch)

Installing the Lower Bracket Assembly

1. Install the lower mount bracket to the frame on the left side of your machine as follows:

- **GrandStand Multi Force machines:**

Use 2 carriage bolts (5/16 inch) and 2 flange nuts (5/16 inch) to install the lower mount bracket to the frame on the left side of the machine (Figure 5).

Torque the bolts to 20 to 25 N·m (175 to 225 in-lb).

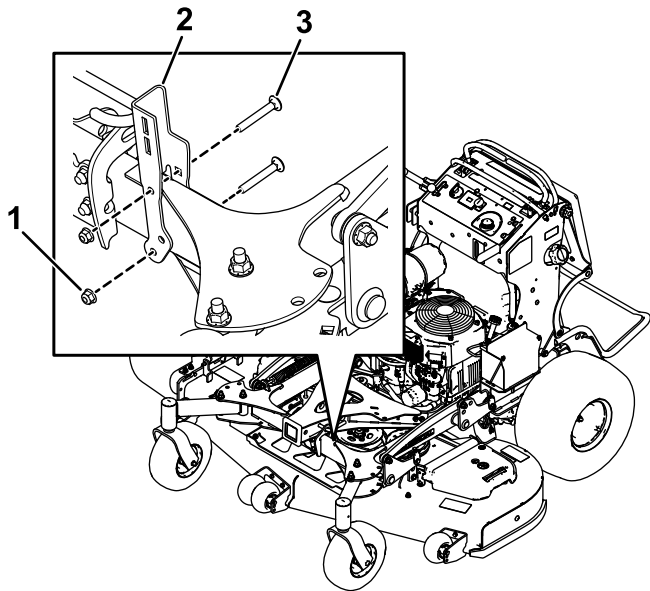


Figure 5

g245016

- 1. Flange nut (5/16 inch)
- 2. Lower mount bracket
- 3. Carriage bolt (5/16 inch)

- **GrandStand machines:**

Use 2 carriage bolts (5/16 inch), 2 flange nuts (5/16 inch), and a spacer to install the lower mount bracket to the frame on the left side of the machine (Figure 6).

Torque the bolts to 20 to 25 N·m (175 to 225 in-lb).

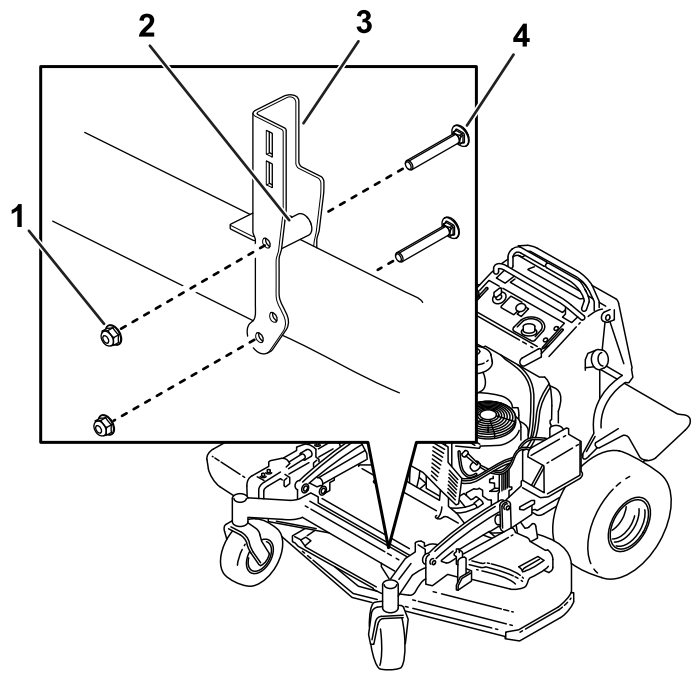


Figure 6

g232329

- 1. Flange nut (5/16 inch)
- 2. Spacer
- 3. Lower mount bracket
- 4. Carriage bolt (5/16 inch)

2. Use 2 carriage bolts (1/4 inch) and 2 flange nuts (1/4 inch) to secure the lower adjustment plate to the mount bracket (Figure 7).

Torque the bolts to 10 to 12 N·m (90 to 110 in-lb).

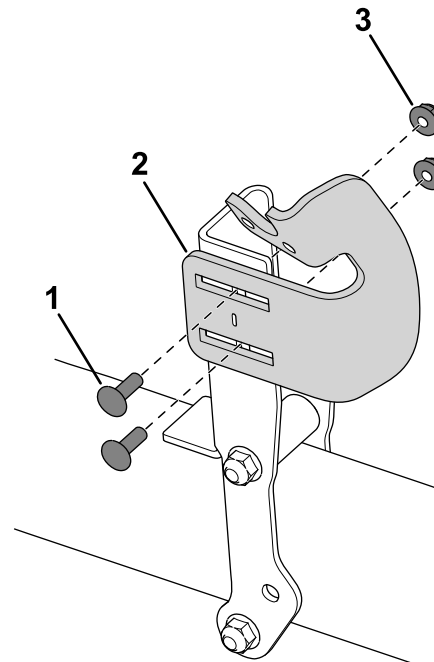


Figure 7

g232327

- 1. Carriage bolt (1/4 inch)
- 2. Lower adjustment plate
- 3. Flange nut (1/4 inch)

- Use 2 hex-head bolts (1/4 x 1-1/4 inch), 2 flange nuts (1/4 inch), and a small backer plate to secure the small clamp to the clamp mount (Figure 8).

Torque the bolts to 10 to 12 N·m (90 to 110 in-lb).

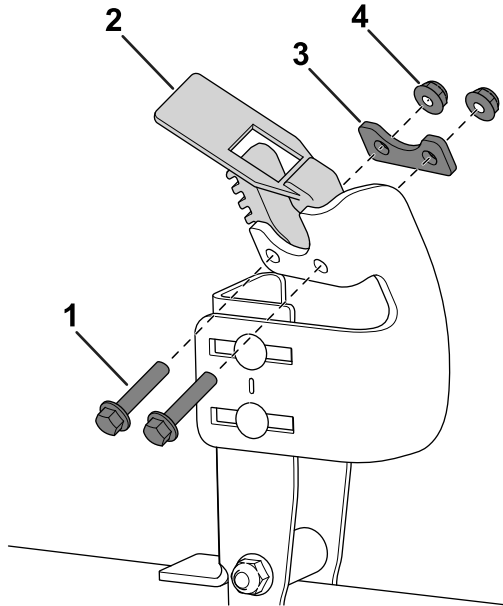


Figure 8

g232328

- | | |
|-------------------------------------|--------------------------|
| 1. Hex-head bolt (1/4 x 1-1/4 inch) | 3. Small backer plate |
| 2. Small clamp | 4. Flange nut (1/4 inch) |

Using the Trimmer Rack

Figure 9 illustrates the correct position of the trimmer on the rack.

Note: Position the upper trimmer handle so that it is held in place by the upper clamp.

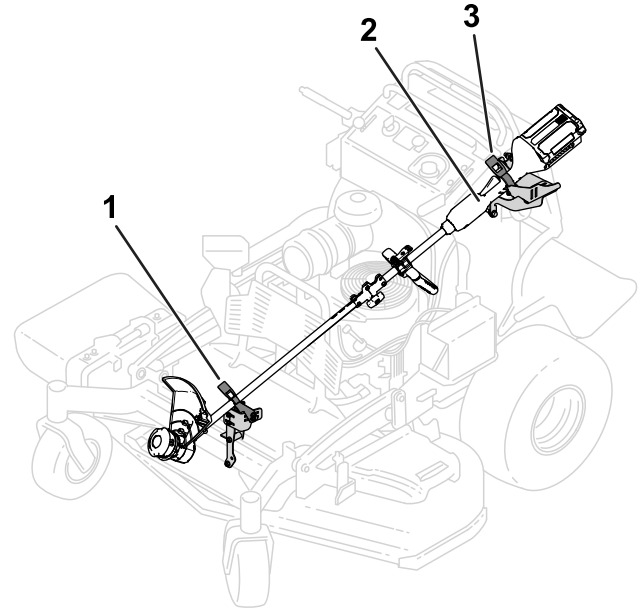


Figure 9

g256571

- | | |
|-------------------------|----------------|
| 1. Lower clamp | 3. Upper clamp |
| 2. Upper trimmer handle | |