



# Pro Control™ Damper Kit

## 2011 and After TimeCutter® Riding Mower

Model No. 138-7588

### Installation Instructions

## Loose Parts

Use the chart below to verify that all parts have been shipped.

Description	Qty.	Use
No parts required	–	Prepare the machine.
Damper	2	Install the kit.

## Preparing the Machine

1. Park the machine on a level surface.
2. Move the motion-control levers to the NEUTRAL-LOCK position.
3. Engage the parking brake.
4. Shut off the engine and remove the key.

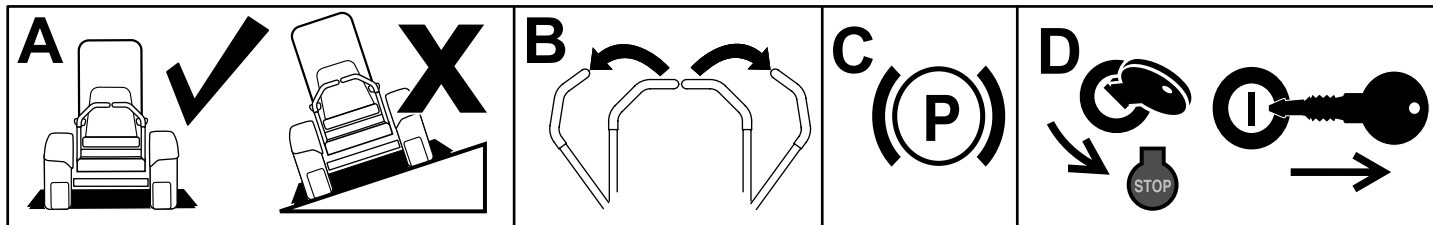


Figure 1

g037289  
g037289



# Installing the Kit

1. Remove the 3 shoulder screws from each pod and remove the pods from both sides of the machine (Figure 2).

Remove the fuel-tank cap before removing the left pod (Figure 2).

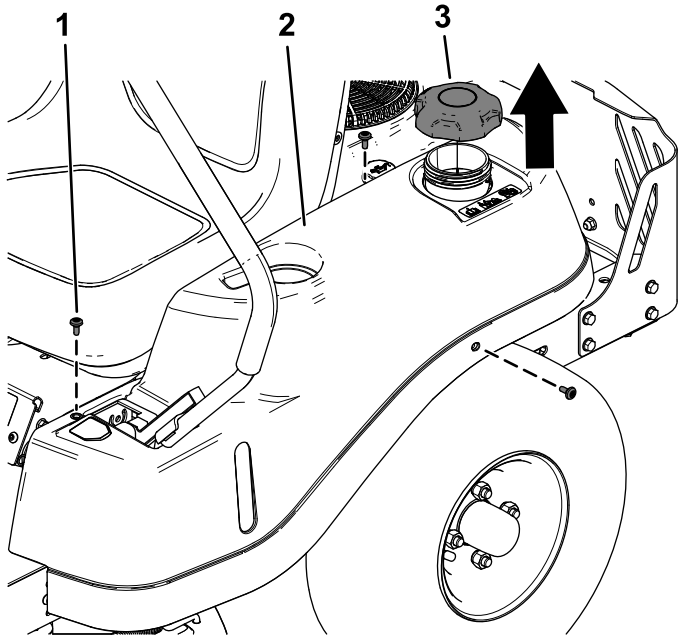


Figure 2

g253592

1. Shoulder screw
2. Pod
3. Fuel-tank cap

2. Remove the 2 fuel-tank clips from the underside of the fuel tank and rotate the fuel tank to the side (Figure 3).

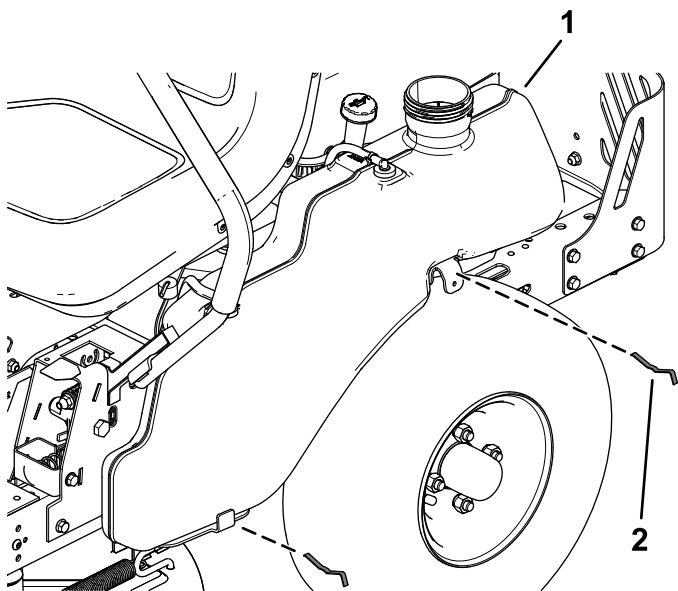


Figure 3

g253594

1. Fuel tank
2. Fuel-tank clips

3. Remove the shoulder screw and washer securing the top of the damper (Figure 4).
4. While holding the damper stud in place using a wrench, remove the locknut (1/4 inch) securing the bottom of the damper (Figure 4).

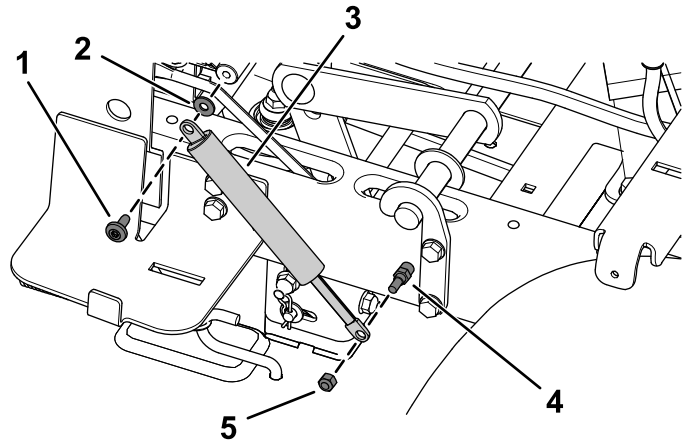


Figure 4

g254332

1. Shoulder screw
2. Washer
3. Damper
4. Stud
5. Locknut (1/4 inch)

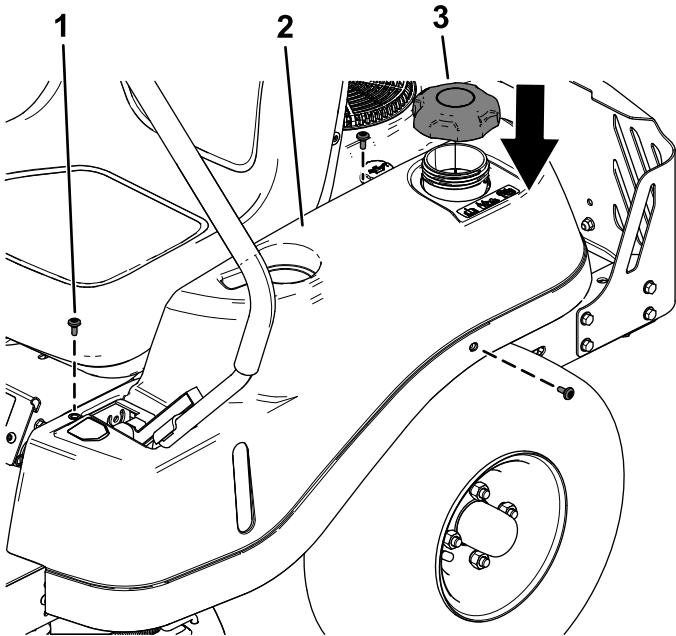
5. Secure the top of the new damper using the previously removed shoulder screw and washer (Figure 4).

Start by hand-tightening the shoulder bolt, then torque it to 565 to 1130 N·cm (50 to 100 in·lb).

6. Secure the bottom of the new damper using the previously removed locknut (1/4 inch) as shown in Figure 4.
7. Rotate the fuel tank back into position and secure it using the previously removed fuel-tank clips (Figure 3).

8. Install each pod using the previously removed 3 shoulder screws from each side (Figure 5).

Install the previously removed fuel-tank cap on the left pod (Figure 5).



**Figure 5**

- |                   |                  |
|-------------------|------------------|
| 1. Shoulder screw | 3. Fuel-tank cap |
| 2. Pod            |                  |

- 
9. Repeat this procedure on the right side of the machine.



**Count on it.**