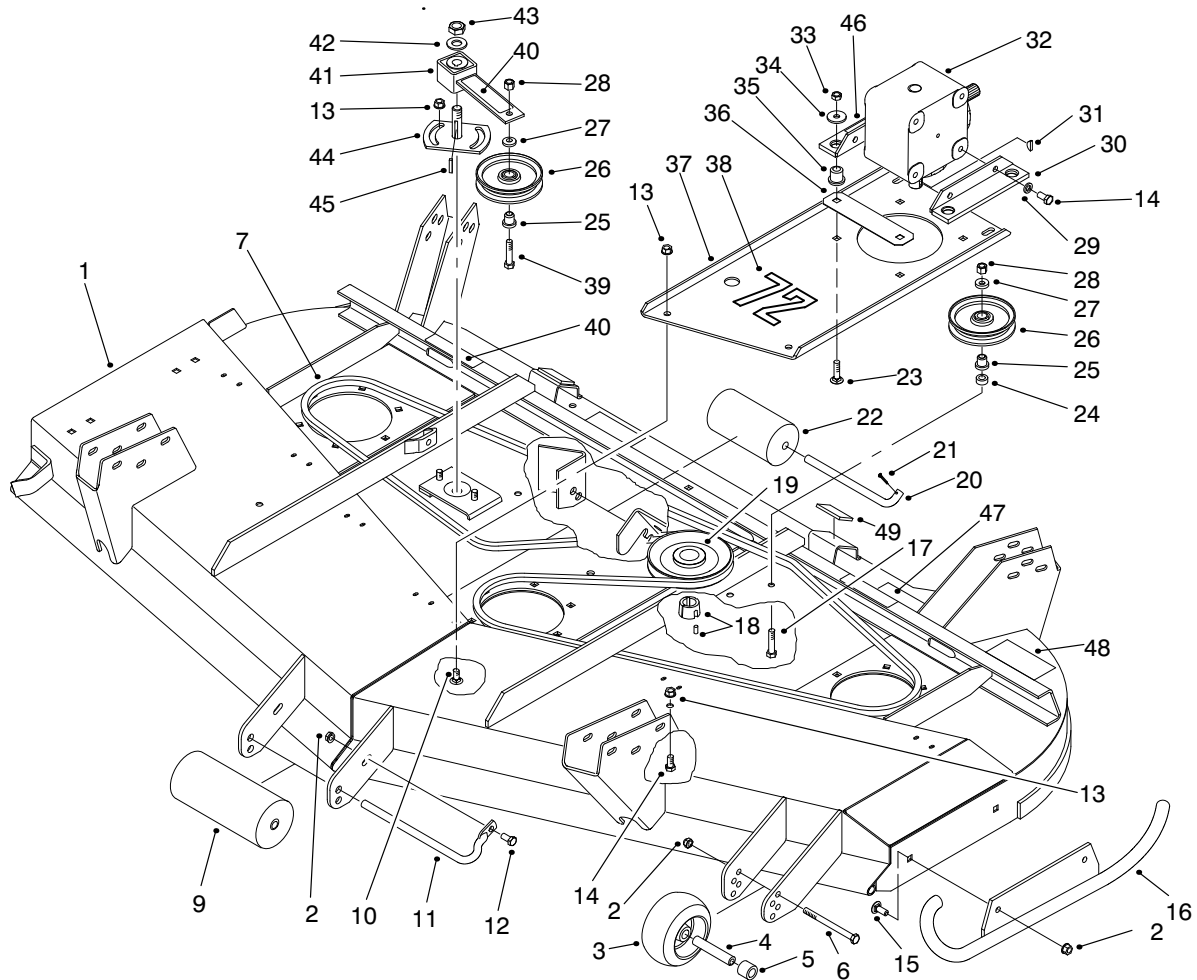




MODEL NO. 30553-90001 & UP
MODEL NO. 30553TE-90001 & UP

PARTS
CATALOG

72" SIDE DISCHARGE CUTTING UNIT
For Groundsmaster® 200 Series

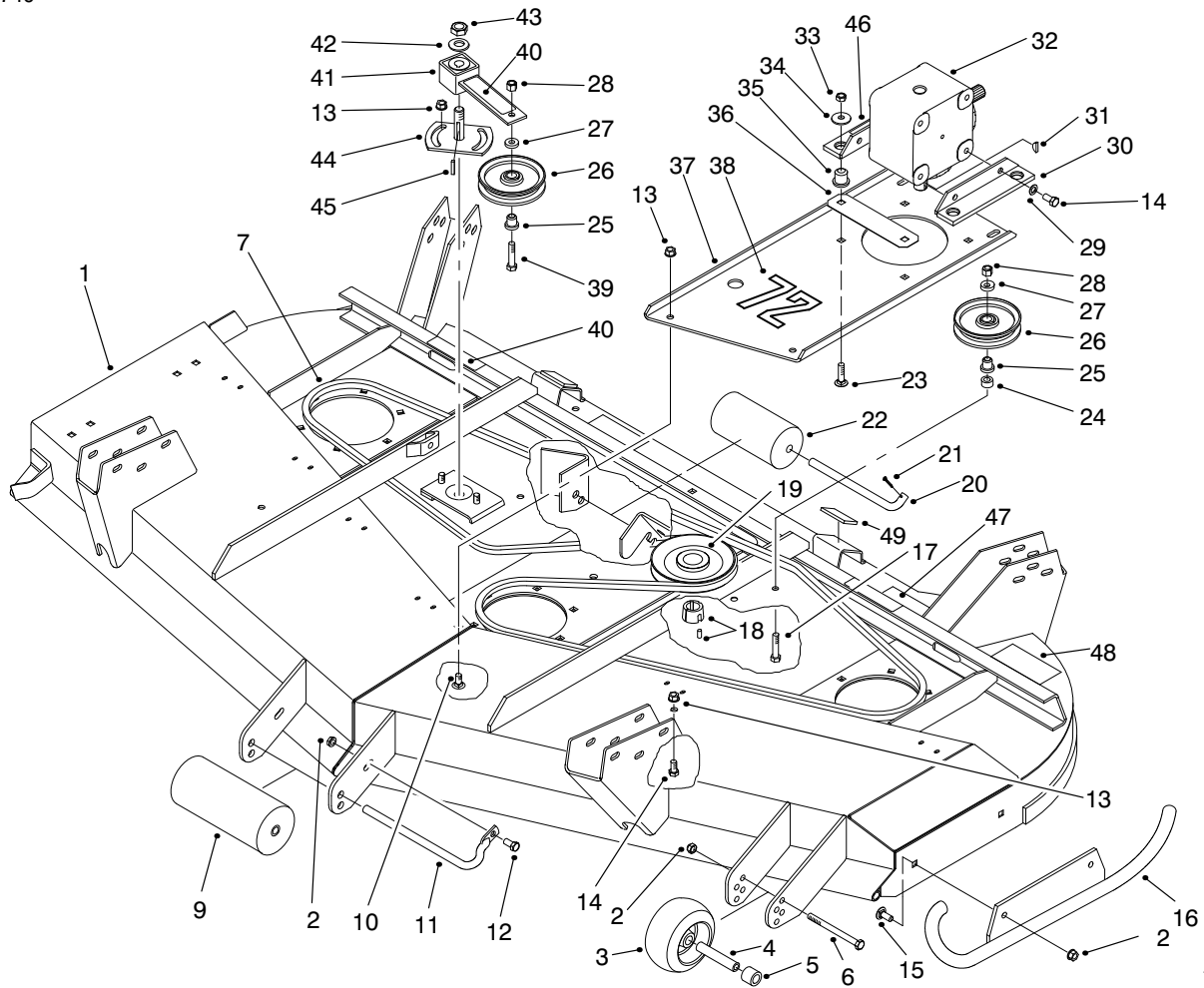


T-2939-2

DECK ASSEMBLY

Ref. No.	Part No.	Description	No. Used
1	99-1278	Asm-Deck (Incl. Ref. #40, 47, 48 & on page 4, #4, 12, 17 & 18)	1
1	99-8406	Asm-Deck (Europe) (Incl. Ref. #40, 47, 48 & on page 4, #4, 12, 17 & 18)	1
2	32128-19	Nut-HFH	4
3	68-2730	Wheel-Gage	1
4	98-7912	Spanner	1
5	98-7913	Spacer	1
6	323-23	Screw-HH	1
7	57-0240	V-Belt	1
9	68-6710	Roller-Deck	1
10	3231-27	Bolt-CARR	4
11	68-6840	Shaft-Roller	1
12	3234-11	Screw-HHF	1
13	3290-357	Nut-HHF	8

Ref. No.	Part No.	Description	No. Used
14	323-4	Screw-HH	6
15	3231-22	Bolt-CARR	2
16	98-7923	Skid	1
17	3211-9	Screw-HH	1
18	27-6140	Bushing-Taperlock	1
19	63-9900	Pulley-Gearbox	1
20	40-0340	Shaft-Roller, Rear	2
21	3272-11	Pin-Cotter	3
22	36-1740	Roller-Deck	2
23	3231-26	Bolt-CARR	4
24	44-6390	Spacer	1
25	65-5950	Bushing-Pulley	2
26	65-5940	Pulley-Idler	2
27	7-0081	Washer-Special	2
28	3296-5	Nut-Lock	2
29	3253-21	Washer-Lock	4
30	68-8560	Bracket-Gear Box	2



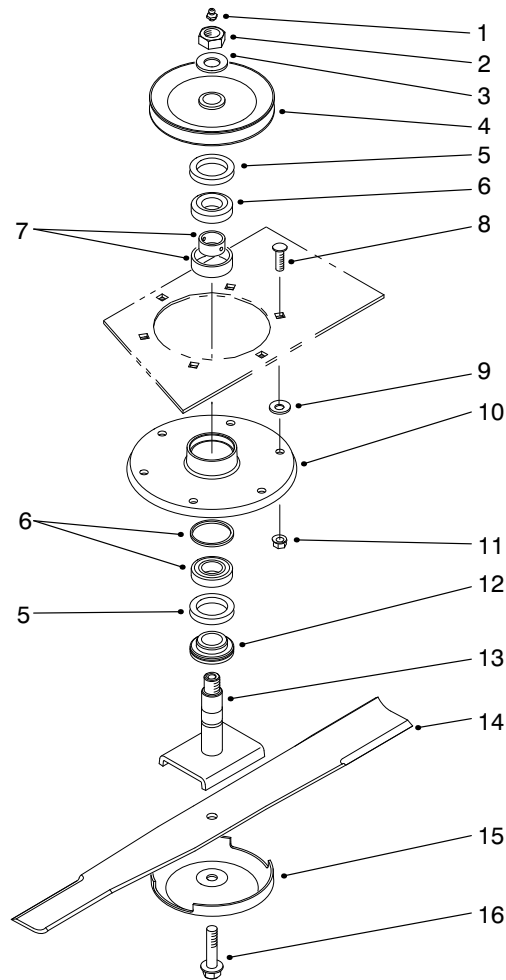
T-2939-2

DECK ASSEMBLY (Continued)

Ref. No.	Part No.	Description	No. Used
31	3257-5	Key-Woodruff	1
32	68-6810	Gear Box	1
33	32153-2	Nut-Lock	4
34	63-8410	Washer-Flat	4
35	63-9750	Mount-Rubber	4
36	68-9890	Cover-Gear Box, Front	1
37	68-8530	Base-Gear Box	1
38	57-0280	Decal-72"	1
39	3211-8	Screw-HH	1
40	67-5360	Decal-Danger	3
40	93-7273	Decal-Danger (Europe)	3
41	99-1297	Asm-Socket, Idler (Incl. Ref. #40)	1

Ref. No.	Part No.	Description	No. Used
42	3256-27	Washer-Flat	1
43	3296-33	Nut-Lock	1
44	44-6300	Plate-Idler	1
45	5-1077	Key-Square	1
46	70-2560	Decal-Lube	1
46	93-6697	Decal-Lube (Europe)	1
47	68-8340	Decal-Torque	1
47	93-7818	Decal-Torque (Europe)	1
48	92-8778	Decal-Warning	1
48	99-8401	Decal-Warning (Europe)	1
49	74-0340	Cushion-Rubber	2

*Not Illustrated

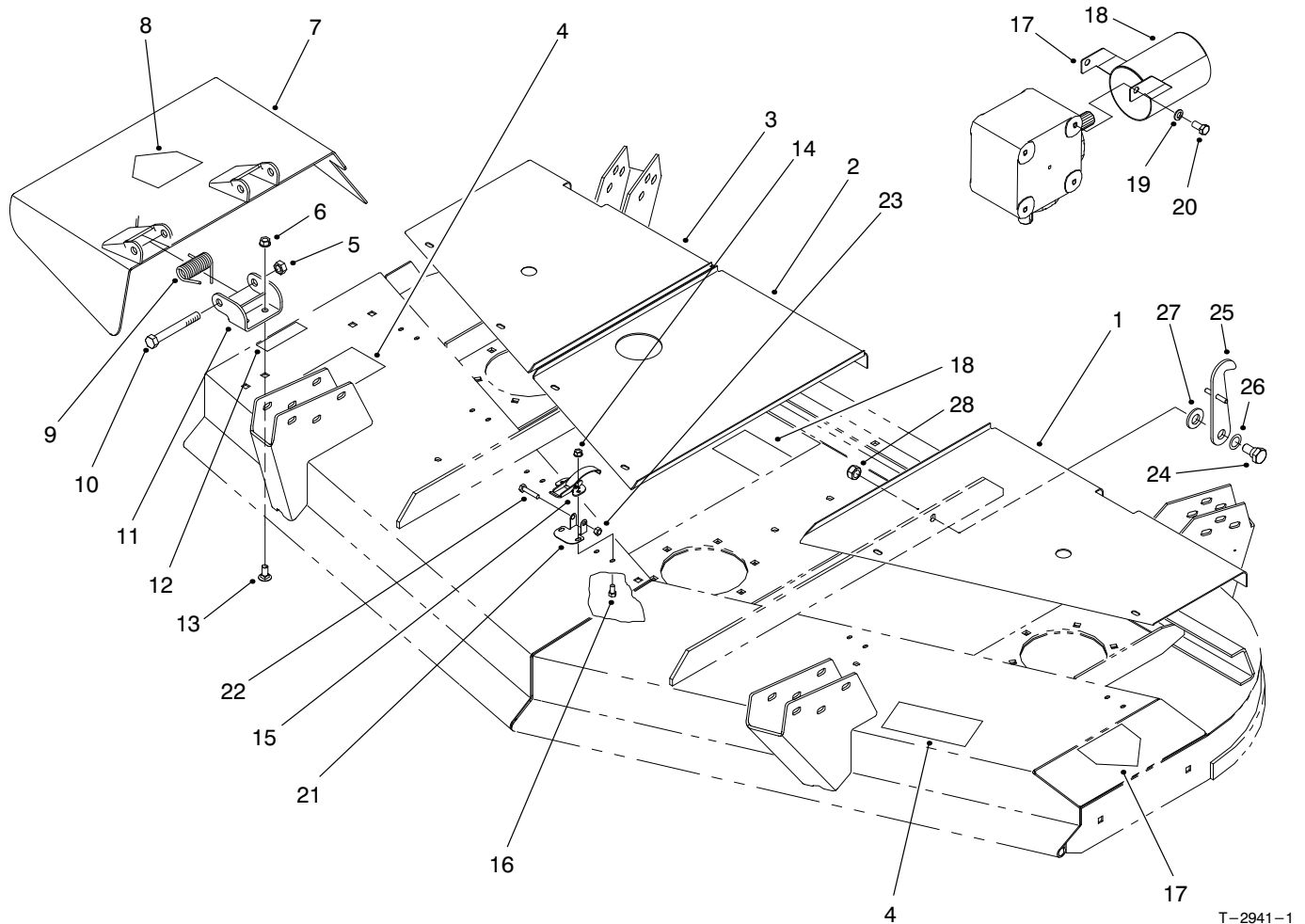


T-2940-2

SPINDLE ASSEMBLY

Ref. No.	Part No.	Description	No. Used	Ref. No.	Part No.	Description	No. Used
1	302-2	Fitting-Grease	3	9	3256-24	Washer-Flat	AR
2	32146-20	Nut-Lock	3	10	61-4160	Spindle	3
3	7-4150	Washer	3	11	32128-21	Nut-Lock HFH	18
4	57-0560	Asm-Pulley & Hub	3	12	27-0950	Spacer-Bearing, Spindle	3
5	253-139	Seal-Oil	6	13	27-0920	Shaft-Spindle	3
6	27-0960	Asm-Bearing	3	14	94-1861	Blade	3
7	27-5970	Spacer-Matched Set	3	15	72-9361	Cup-Anti Scalp	3
8	3231-22	Bolt-CARR	18	16	92-5816	Screw-Blade	3

*Not Illustrated

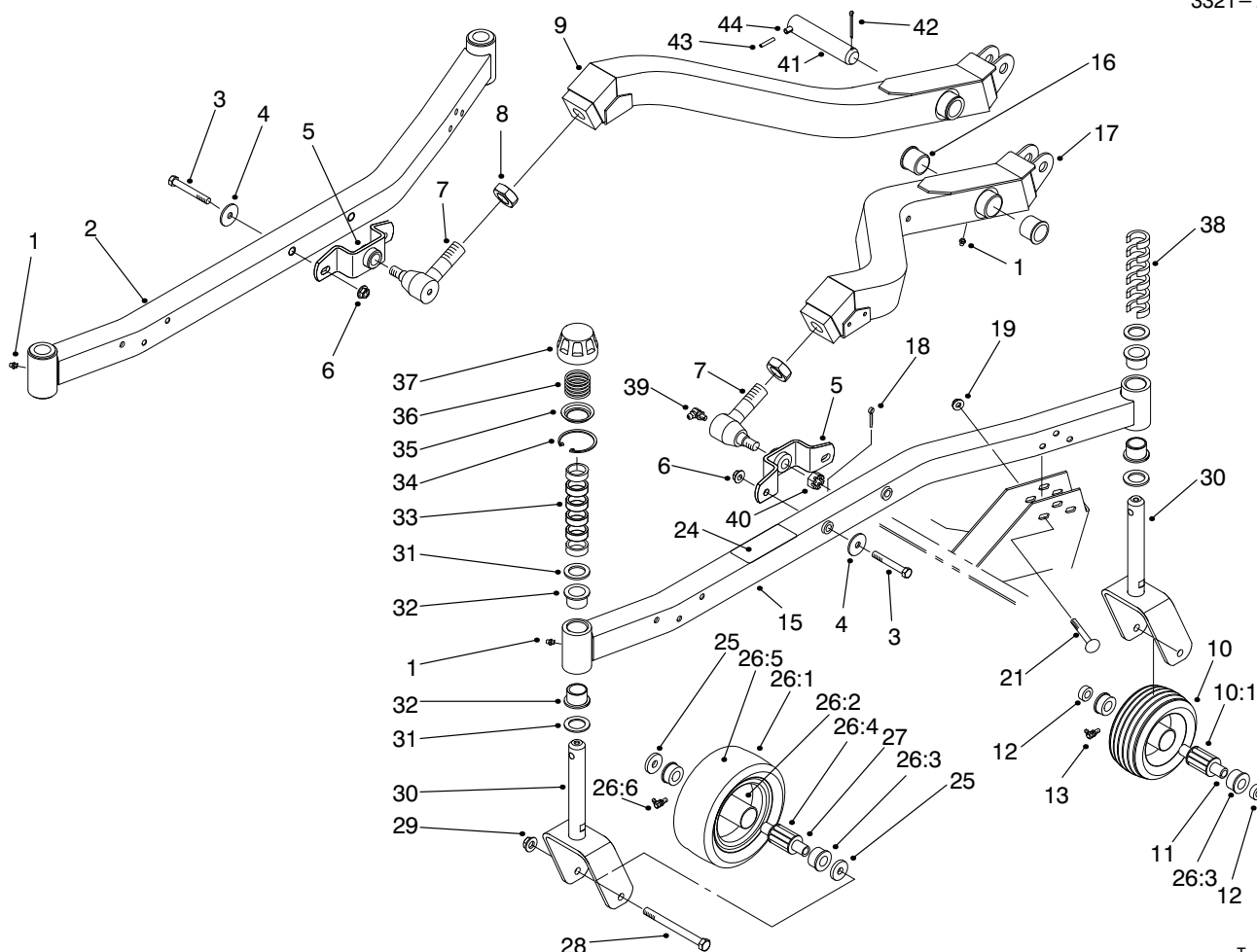


T-2941-1

COVERS & DEFLECTOR ASSEMBLY

Ref. No.	Part No.	Description	No. Used
1	98-7930	Cover-Belt LH	1
2	57-0210	Cover-Center	1
3	98-7928	Cover-Belt RH	1
4	66-1340	Decal-Danger	2
4	93-7824	Decal-Danger (Europe)	2
5	32153-5	Nut-Lock	2
6	3290-357	Nut-HFH	4
7	14-0909	Asm-Deflector (Incl. Ref. #8)	1
8	54-9220	Decal-Danger	1
8	93-7316	Decal-Danger (Europe)	1
9	51-1550	Spring	2
10	325-17	Screw-HH	2
11	51-1530	Bracket-Hinge	2
12	66-6380	Decal-Danger	1
12	93-7828	Decal-Danger (Europe)	1
13	3231-27	Bolt-CARR	4

Ref. No.	Part No.	Description	No. Used
14	32128-17	Nut-HFH	12
15	249-21	Latch-Draw	6
16	3290-321	Screw-Hex Slotted Hd.	12
17	43-8480	Decal-Danger	1
17	93-7815	Decal-Danger (Europe)	1
18	99-5172	Decal-Belt Routing	1
19	3253-21	Washer-Lock	2
20	323-2	Screw-HH	2
21	93-7043	Retainer	3
22	321-8	Screw-HH	3
23	3296-56	Nut-Lock	3
24	62-6080	Bolt-Shoulder	2
25	99-5188	Asm-Retainer, Deck	2
26	3290-317	Washer-Wave	2
27	3256-27	Washer-Flat	2
28	3296-28	Nut-Lock	2

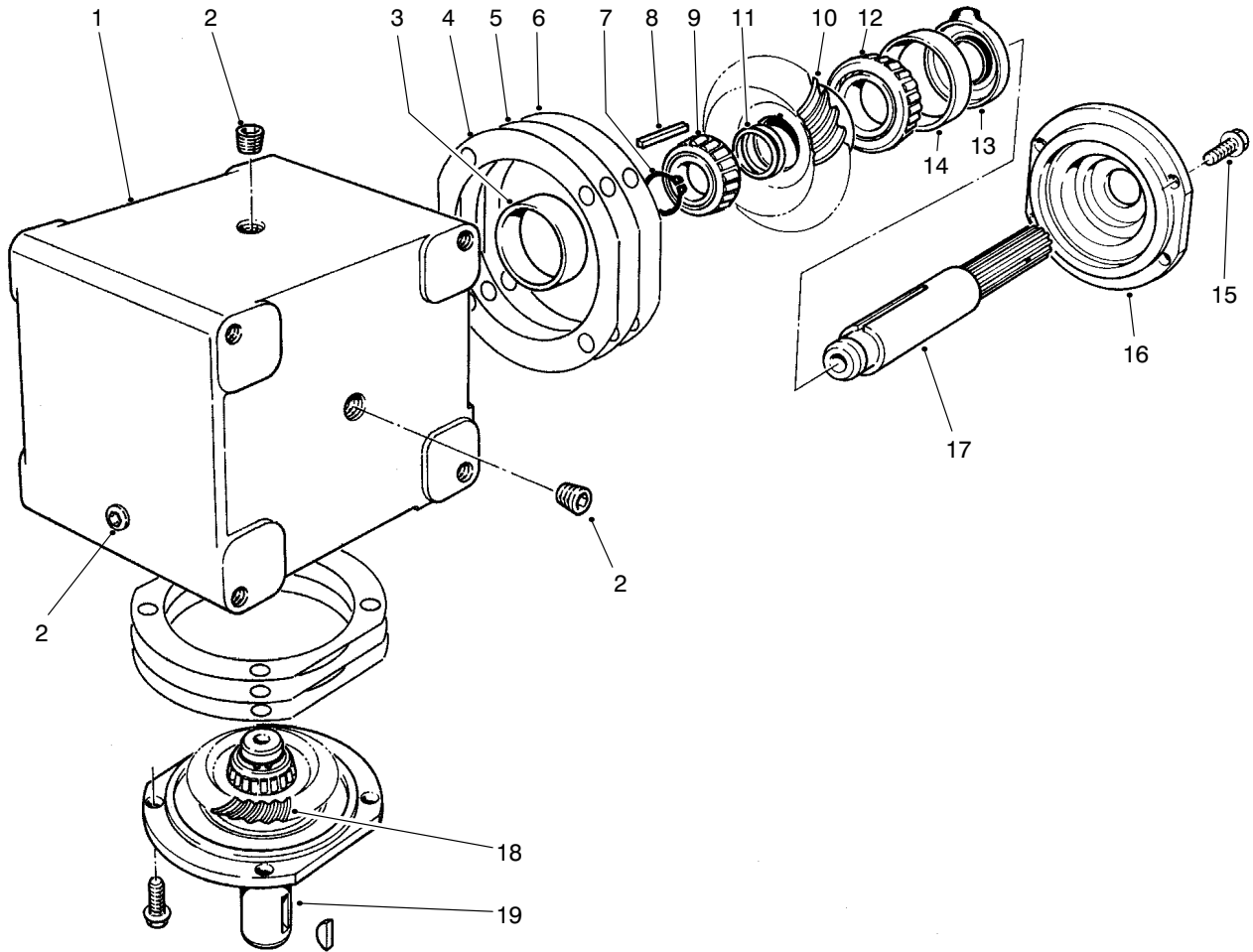


T-2942-1

CARRIER FRAME ASSEMBLY

Ref. No.	Part No.	Description	No. Used	Ref. No.	Part No.	Description	No. Used
1	302-5	Fitting-Grease	6	25	70-8040	Washer-Flat	4
2	98-7934	Arm-Castor RH (Incl. Ref. #1 & 32)	1	26	99-1268	Asm-Wheel & Tire	2
3	324-12	Screw-HH	4	26:1	93-9939	Tire 8"	1
4	66-6480	Washer	4	26:2	Asm-Rim	1	
5	98-7944	Mount-Ball Joint	2	26:3	62-5580	Bearing-Outside	2
6	32128-42	Nut-HFH	4	26:4	62-5570	Bearing-Roller	1
7	86-8100	Ball Joint (Incl. Ref. #39 & 40)	2	26:5	68-8950	Tube-W/Valve	1
8	21-3000	Nut-Jam	2	26:6	302-11	Fitting-Grease	1
9	98-7900	Arm-Lift, RH (Incl. Ref. #1 & 16)	1	27	68-8980	Bushing-Spanner	2
10	63-8400	Wheel-Castor (Incl. Ref. #10:1, 13 & 26:3)	2	28	325-19	Screw-HH	4
10:1	63-8580	Bearing-Roller	2	29	32128-23	Nut-HFH	4
11	63-1770	Bushing-Spanner	2	30	98-7921	Asm-Fork, Castor	4
12	99-1291	Spacer	4	31	3-6781	Washer-Thrust	8
13		Fitting-Grease	2	32	94-1291	Bushing-Special	8
15	98-7933	Arm-Castor LH (Incl. Ref. #1, 24 & 32)	1	33	63-0070	Spacer	12
16	256-268	Bushing-Flange	4	34	92-5581	Ring-Retaining, Internal	4
17	98-7903	Arm-Lift LH (Incl. Ref. #1 & 16)	1	35	92-5583	Washer-Cap	4
18	3272-12	Pin-Cotter	2	36	92-5584	Spring-Compression	4
19	32128-19	Nut-HFH	12	37	92-8861	Cap-Height-Of-Cut	4
21	3231-10	Bolt-CARR	12	38	99-1283	Spacer	12
24	92-3035	Decal-Low Height-Of-Cut	1	39	302-5	Fitting-Grease 90°	2
				40	32136-2	Nut-Hex. Slotted	2
				41	98-2330	Asm-Pivot Pin (Incl. Ref. #43 & 44)	2
				42	3272-19	Pin-Cotter	2
				43	32121-61	Pin-Roll	1
				44	32121-67	Pin-Roll	1

*Not Illustrated

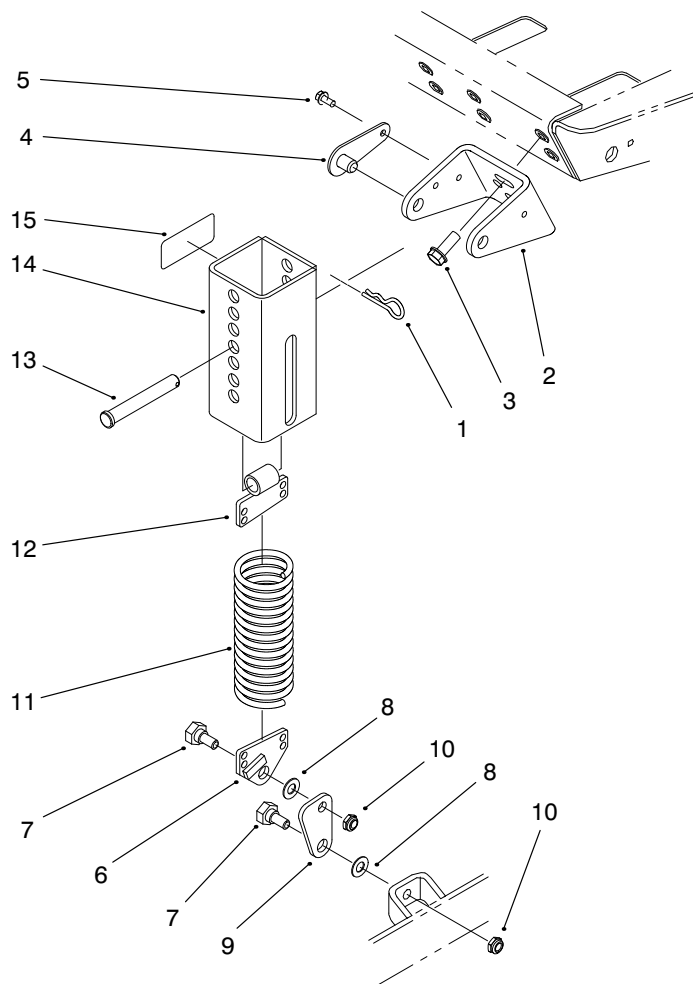


T-0977-2

GEAR BOX ASSEMBLY NO. 68-6810

Ref. No.	Part No.	Description	No. Used
1	68-7030	Housing	1
2	62-3490	Plug-Pipe (Solid)	4
3	62-3360	Cup-Bearing	2
4	62-3420	Gasket (.015 in.)	A/R
5	62-3430	Gasket (.005 in.)	A/R
6	62-3440	Gasket (.003 in.)	A/R
7	68-7070	Ring-Retaining	2
8	62-3380	Key	2
9	62-3370	Cone-Bearing	2
10	68-7080	Gear	1

Ref. No.	Part No.	Description	No. Used
11	72-9370	Shim (.020 in.)	4
12	62-3330	Cone-Gear	1
13	62-3400	Seal	2
14	62-3340	Cup-Bearing	2
15	62-3310	Screw-Cap	8
16	62-3410	Cap	2
17	68-7040	Shaft	1
18	68-7060	Gear	1
19	68-7050	Shaft	1



T-2486-4

COUNTERBALANCE ASSEMBLY

Ref. No.	Part No.	Description	No. Used	Ref. No.	Part No.	Description	No. Used
1	3290-355	Pin-Hair, Cotter	2	10	3296-44	Nut-Lock	4
2	66-8230	Bracket-Support	2	11	66-8390	Spring-Extension	2
3	3234-11	Screw-HFH	4	12	70-7940	End-Spring	2
4	70-7920	Asm-Pin, Lock	4	13	283-69	Pin-Clevis	2
5	12-3270	Screw-Self Tapping	4	14	99-1298	Asm-Spring Cover (Incl. Ref. #15)	2
6	66-8420	End-Spring	2	15	55-4300	Decal-Warning	4
7	46-3380	Bolt-Shoulder	4	15	93-6696	Decal-Warning (Europe)	1
8	3256-24	Washer-Flat	4				
9	66-8440	Link-Knee	2				

PRODUCT CHANGES

In an effort to make improvements available to TORO owners as quickly as possible, minor changes are incorporated into Toro's products from time to time that do not become immediately shown in the Parts Catalog. If such a change has been made in your unit, which is not reflected in your manual, see your TORO Distributor or his Authorized TORO Service Dealer for information and part numbers.

COUNTRIES OTHER THAN THE UNITED STATES OR CANADA

Customers who have purchased TORO products exported from the United States or Canada should contact their Toro Distributor (Dealer) to obtain guarantee policies for your country, province or state. If for any reason you

are dissatisfied with your Distributor's service or have difficulty obtaining guarantee information, contact the TORO importer. If all other remedies fail, you may contact us at The Toro Company.

MAINTENANCE RECORD

Date								