



44" Snowthrower
For Toro[®] Sitework[™] Systems
Model No. 22456 – 990001 and Up

Parts Catalog

Ordering Replacement Parts

To order replacement parts, please supply: the part number, the quantity, and the description of each part desired.

Understanding Reference Numbers

Each identified part in an illustration has a reference number. The reference number for a part also appears in the parts list, along with other information about the part.

This catalog uses two special reference number formats, one to indicate parts in a service assembly and another to indicate the quantity of a given part in an illustration.

Service Assembly Reference Numbers

Parts in service assemblies have reference numbers in the form **a:b**. The **a** represents the reference number of the entire service assembly and the **b** represents a sequential number unique to each part within the service assembly.

For example, a wheel assembly might be identified by reference number **6**, the tire by **6:1**, the valve by **6:2**, and the wheel by **6:3**. When you order the assembly identified by reference number **6**, you receive all parts identified by reference numbers **6:1**, **6:2**, and **6:3**. However, you may also order any part individually.

Reference numbers of this type appear in illustrations and in part lists.

Reference Numbers Indicating Quantity

In an illustration, if a reference number indicates more than one part, the reference number has the form **nX y**. The **n** represents the quantity of the part, the **X** is the multiplication symbol, and the **y** represents the reference number.

For example, in an illustration, the reference number **2X 37** means that two of the parts identified by reference number **37** are indicated.

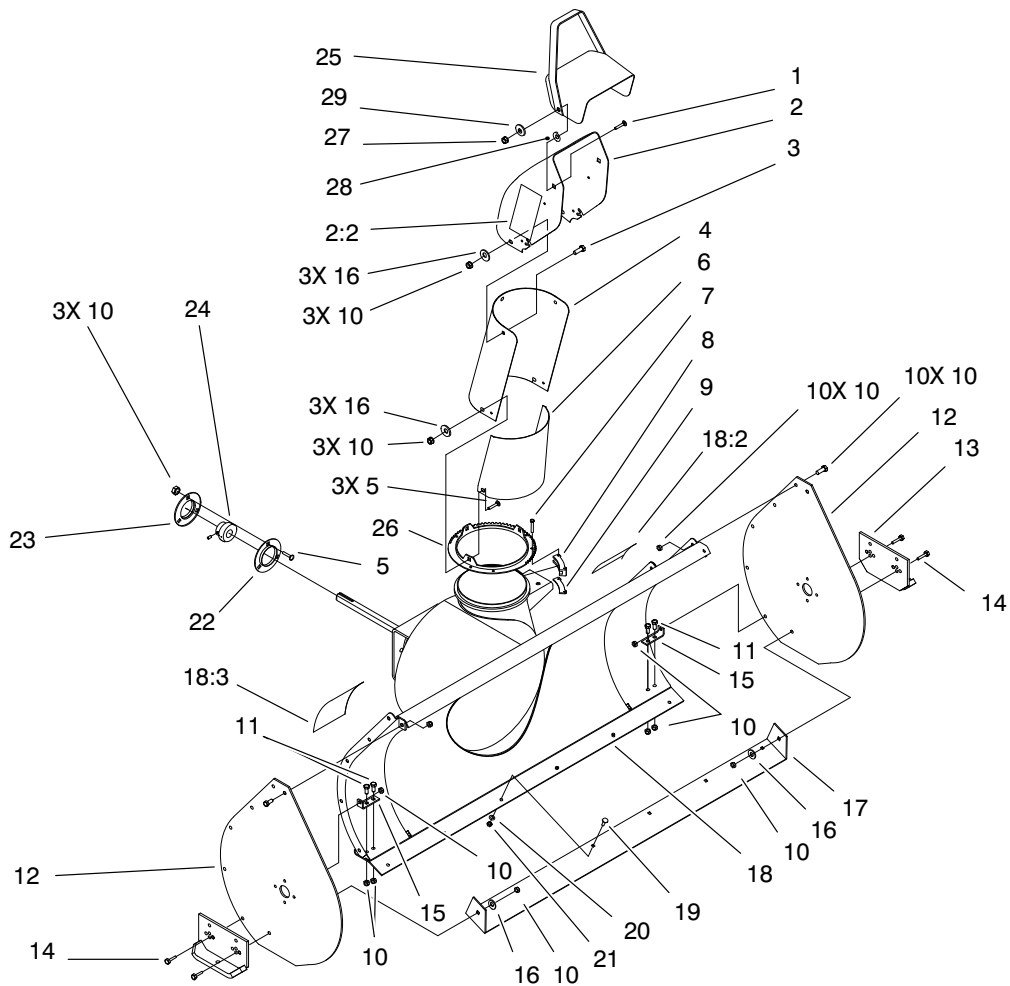
Contents

Description	Page	Description	Page
Discharge Chute Assembly	3	Auger and Gearcase Assembly	5
Hydraulic Hose and Pump Assembly	4	Crank And Mounting Assembly	6

Part Description Abbreviations

Part descriptions in this catalog may include the following abbreviations.

Abbreviation	Meaning	Abbreviation	Meaning
AR	as required	INC	incorporated
ASM	assembly	LH	left hand
CARR	carriage	NI	nylon insert
DEG	degrees	PPH	Phillips pan head
FH	flat head	PTH	Phillips truss head
GA	gauge	PTO	power take off
HF	hex flange	RH	right hand
HH	hex head	SFH	slotted fillister head
HHF	hex head flange	SHH	slotted hex head
HLH	hex lag head	SQH	square head
HJ	hex jam	SHWH	slotted hex washer head
HOC	height-of-cut	SPH	slotted pan head
HS	hex socket	SRH	slotted round head
HSBH	hex socket button head	STD	standard
HSFH	hex socket flat head	TAP	self tapping
HSH	hex socket head	TTH	Torx truss head
HWH	hex washer head	WH	wing head
HWHTF	hex washer head thread forming		

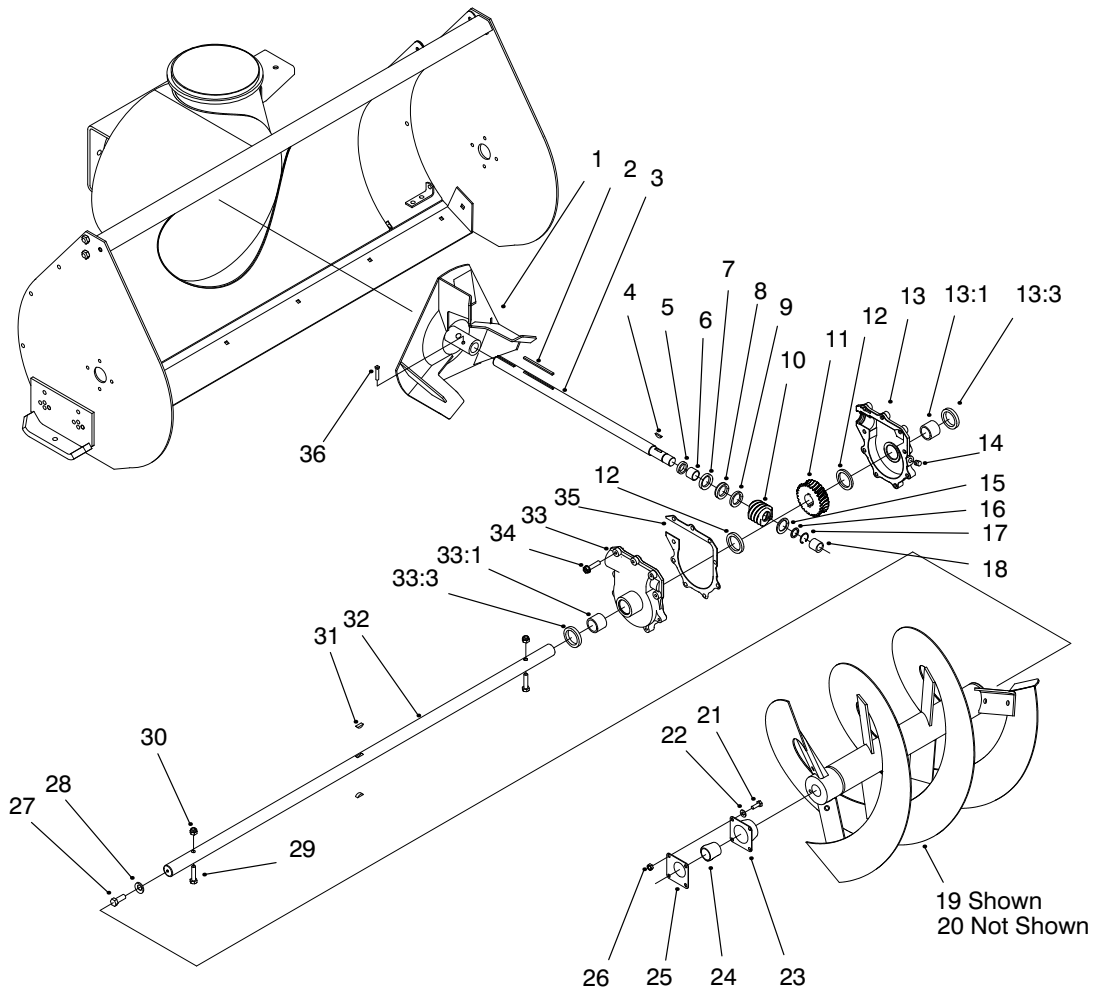


Sheet No.:2

Discharge Chute Assembly

Ref. No.	Part No.	Qty.	Description
1	3231-2	2	Screw-CARR
2	100-4623	1	Dischge Chute ASM
2:2	93-7309	2	Decal - Discharge Danger
3	322-2	3	Screw-HH
4	26-1110-01	1	Extender-Chute, Upper
5	3230-1	6	Screw-CARR
6	94-9787-01	1	Shield-Deflector
7	100-4628	6	Screw
8	25-5450	3	Retainer-Chute
9	100-4605-03	3	Plate, Chute-Retainer
10	3296-29	27	Nut-Lock NI
11	322-3	14	Screw-HH
12	57-3510-01	2	Plate-Side
13	100-4600-01	2	Skid ASM
14	322-47	4	Screw-HH
15	99-2304-01	2	Bracket-Blade Support
16	3256-23	8	Washer-Flat
17	99-2303-01	1	Blade-Scraper
18	99-6897	1	Housing ASM
18:2	93-7310	2	Decal - Auger Danger
18:3	93-7311	1	Decal - Warning
19	3229-25	6	Screw-CARR
20	3256-22	6	Washer-Flat

Ref. No.	Part No.	Qty.	Description
21	3296-42	6	Nut-Lock NI
22	76-2500	1	Flange
23	76-2490	1	Flange-Relube Zerk
24	110569	1	Bearing & Collar
25	11-7120-01	1	Deflector
26	25-5290-01	1	Ring-Chute, Swivel
27	3296-39	2	Nut-Lock NI
28	20-4320	2	Washer-Rubber
29	3290-340	2	Washer-Belleville



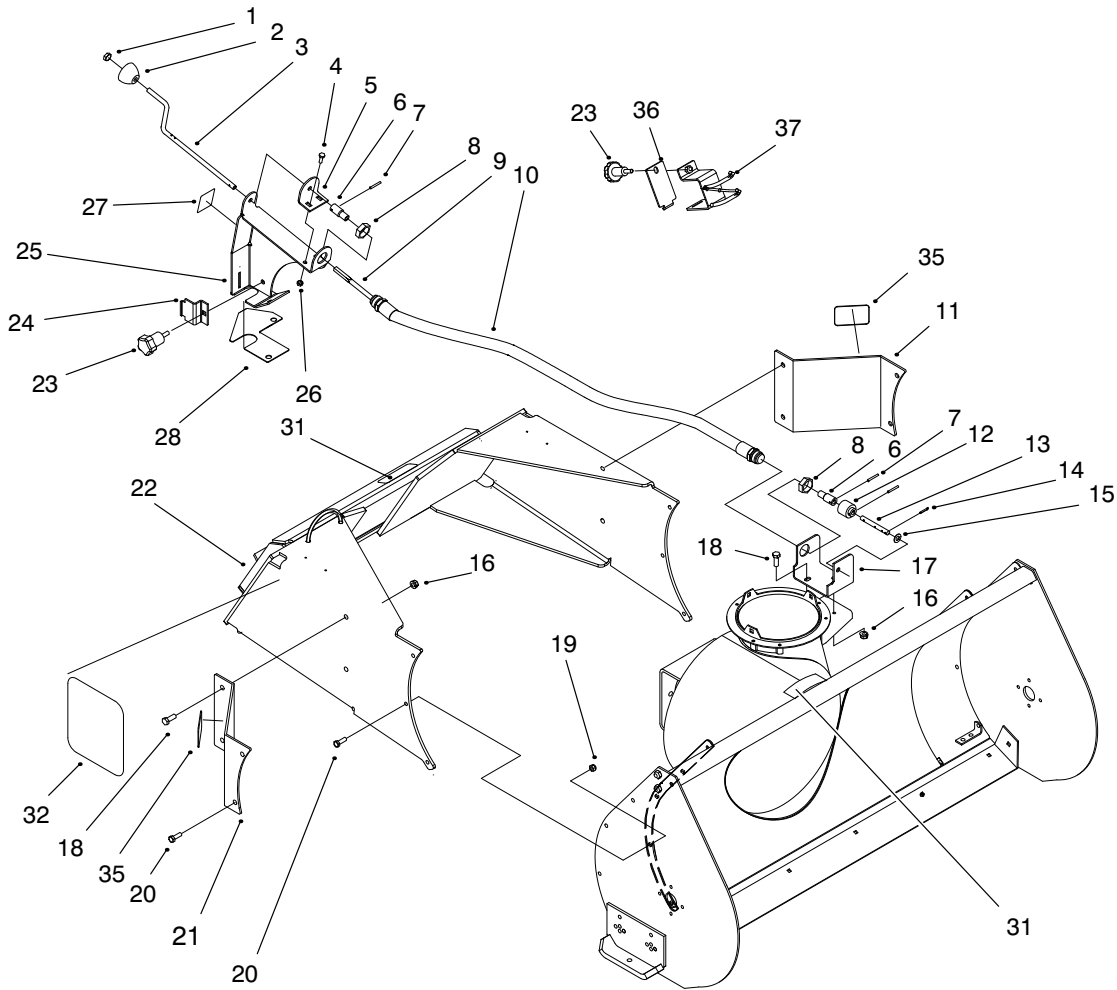
Sheet No.:4

Auger and Gearcase Assembly

Ref. No.	Part No.	Qty.	Description
1	19-8890-01	1	Impeller
2	6-8590	1	Key
3	19-8540	1	Shaft-Impeller
4	3257-23	1	Key-Woodruff
5	237-87	1	Ring-Quad
6	256-322	1	Bushing-Special
7	252-78	1	Bearing-Thrust
8	252-76	1	Bearing-Thrust
9	252-77	1	Thrust-Washer
10	5-7170	1	Gear
11	5-7180	1	Gear-Worm 21 T
12	252-71	2	Bearing-Thrust
13	14-2459	1	LH Gear Case/Bushing ASM
13:1	256-237	1	Bushing
13:3	7-0045	1	Seal-Oil
14	281-1	1	Plug-SQH Pipe
15	3-8664	1	Washer-Thrust
16	5210	1	Washer-Shim
17	32120-72	1	Ring-Snap
18	256-32	1	Bushing
19	57-3300-01	1	Auger, RH
★20	57-3370-01	1	Auger, LH
21	321-4	8	Screw-HH
22	3256-22	8	Washer-Flat
23	20-0990	2	Bearing-Flange, Front

Ref. No.	Part No.	Qty.	Description
24	20-0980	2	Bearing
25	20-1000	2	Bearing-Flange, Rear
26	3296-42	8	Nut-Lock NI
27	3235-22	2	Screw-HH
28	2844	2	Washer
29	322-14	2	Screw-HH
30	3296-29	4	Nut-Lock NI
31	3257-33	2	Key-Woodruff
32	57-3500	1	Shaft-Auger
33	14-2449	1	RH Gear Case/Bushing ASM
33:1	256-237	1	Bushing
33:3	7-0045	1	Seal-Oil
34	32144-41	8	Screw-Taptite
35	92-9839	1	Gasket-Gear Box
36	3242-6	2	Screw-SQH Set

★ Not Illustrated



Sheet No.:5

Crank And Mounting Assembly

Ref. No.	Part No.	Qty.	Description
1	3290-320	1	Retainer-Push On
2	61-4890	1	Knob-Chute
3	99-5906	1	Rod-Control,Chute
4	3229-1	2	Screw-CARR
5	99-5904-01	1	Bracket-Rod, Support
6	61-4940	2	Coupler
7	32121-50	3	Pin-Spring
8	353-955	2	Locknut
9	99-4978	1	Shaft-Flexible
10	99-4979	1	Hose ASM
11	100-4603-01	1	Plate-Extension, LH
12	8-8600	1	Gear-Worm, Chute
13	61-4950	1	Shaft-Worm Gear
14	3272-10	1	Pin-Cotter
15	3256-24	7	Washer-Flat
16	3296-39	4	Nut-Lock NI
17	99-5319-01	1	Bracket - Worm Gear
18	323-6	4	Screw-HH
19	3296-29	10	Nut-Lock NI
20	322-5	10	Screw-HH
21	100-4604-01	1	Plate-Extension, RH
22	99-4424-01	1	Snowthrower Mount ASM
23	99-6137	3	Knob-Chute Control
24	99-5907-01	1	Bracket-Clamp

Ref. No.	Part No.	Qty.	Description
25	99-5909-01	1	Bracket-Chute, Control
26	3296-42	2	Nut-Lock NI
27	63-3510	1	Decal - Chute Direction
28	99-6139	1	Foam-Chute, Control
*29	83-1040	1	Washer - Flat
31	98-4683	2	Decal-Dingo Attachment
32	98-4680	2	Decal - Side
35	100-4627	2	Reflector - Snowthrower
36	100-4612-03	1	Bracket-Retainer, Clamp
37	100-4611-03	1	Hose Retainer ASM

* Not Illustrated

