



Trimmer Mount Kit

Z Master® 3000, 5000, or 6000 Series Riding Mower

Model No. 137-9769

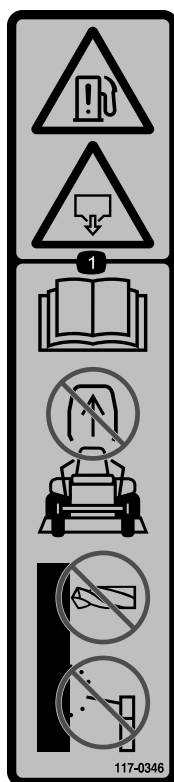
Installation Instructions

Safety

Safety and Instructional Decals



Safety decals and instructions are easily visible to the operator and are located near any area of potential danger. Replace any decal that is damaged or missing.



117-0346

decal117-0346

1. Fuel-leak hazard—read the *Operator's Manual*; do not attempt to remove the roll bar; do not weld, drill, or modify the roll bar in any way.



Installation

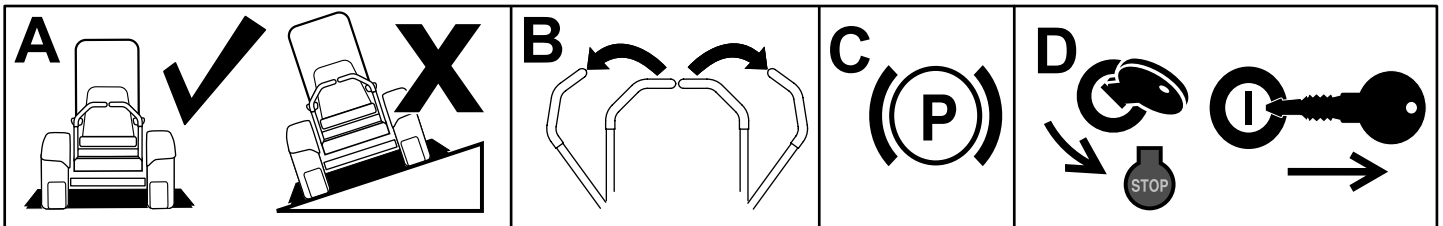
1

Preparing the Machine

No Parts Required

Procedure

1. Park the machine on a level surface.
2. Move the motion-control levers to the NEUTRAL-LOCK position.
3. Engage the parking brake.
4. Shut off the engine and remove the key.



g037289
g037289

Figure 1

2

Assembling the Upper Trimmer Mount Assembly

Parts needed for this procedure:

| | |
|---|------------------------------------|
| 1 | Upper trimmer mount bracket |
| 1 | Large fist clamp |
| 1 | Large backer plate |
| 2 | Carriage bolt (1/4 x 1-1/2 inches) |
| 2 | Flange nut (1/4 inch) |

Procedure

Assemble the upper trimmer mount assembly (Figure 2).

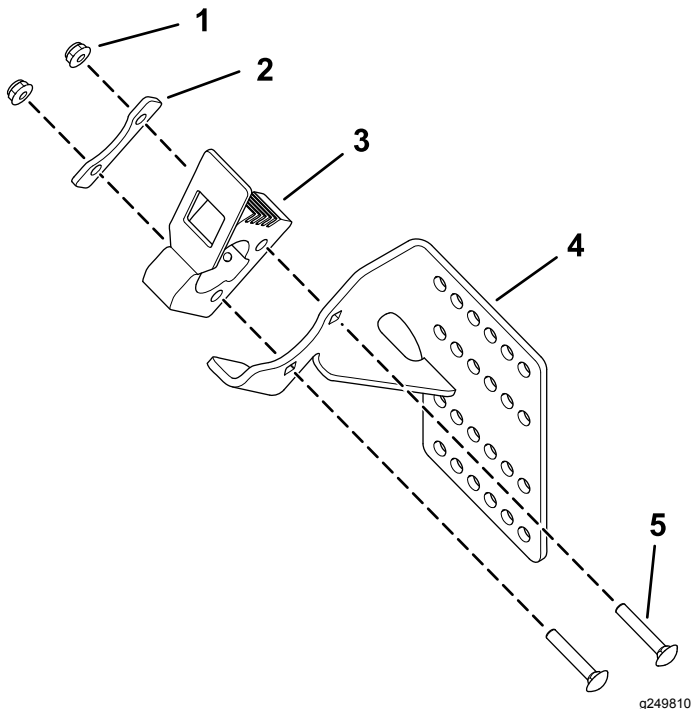


Figure 2

- 1. Flange nut (1/4 inch)
- 2. Large backer plate
- 3. Large fist clamp
- 4. Upper trimmer mount bracket
- 5. Carriage bolt (1/4 x 1-1/2 inches)

3

Installing the Support Bracket

Parts needed for this procedure:

| | |
|---|--------------------------------|
| 1 | Support bracket |
| 2 | Tube spacer |
| 2 | Carriage bolt (3/8 x 3 inches) |
| 2 | Flange nut (3/8 inch) |

Procedure

1. Lower the roll bar.
2. Install the support bracket to the right post of the roll bar using 2 tube spacers, 2 carriage bolts (3/8 x 3 inches), and 2 flange nuts (3/8 inch) as shown in Figure 3.
3. Raise the roll bar.

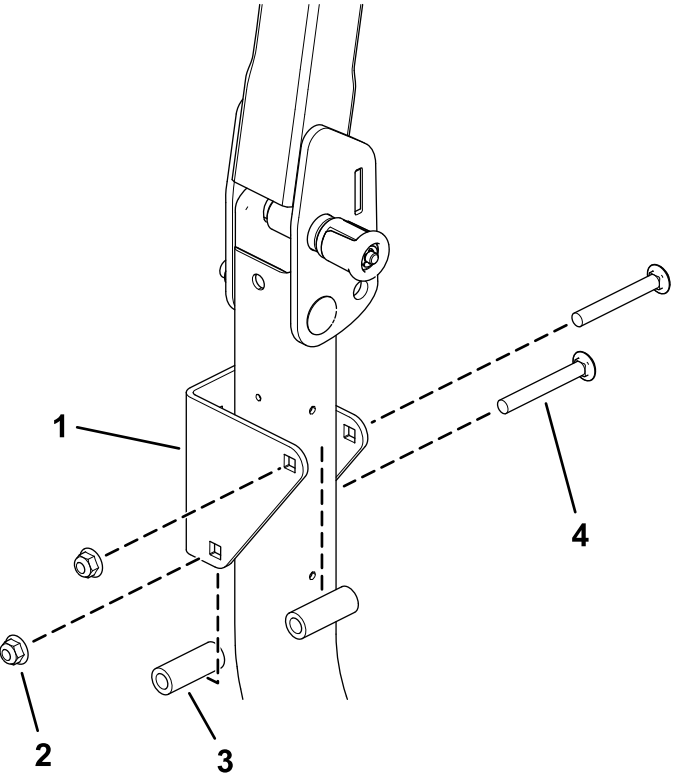


Figure 3

- 1. Support bracket
- 2. Flange nut (3/8 inch)
- 3. Tube spacer
- 4. Carriage bolt (3/8 x 3 inches)

4

Applying the Decal

Parts needed for this procedure:

| | |
|---|----------------|
| 1 | Decal 117-0346 |
|---|----------------|

Procedure

If decal 117-0346 is applied to the right post of the roll bar on your machine and the support bracket now covers that decal, apply the new decal to the inner, lower side of the right post of the roll bar (Figure 4).

Note: If decal 117-0346 is not applied to the right post of the roll bar on your machine, discard the decal.

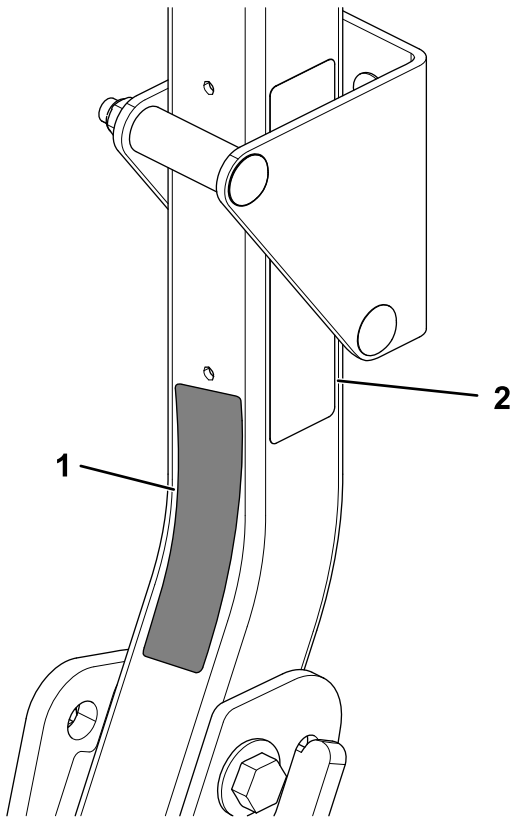


Figure 4

g249924

1. Apply the new decal here. 2. Existing, covered decal

5

Securing the Upper Trimmer Mount Assembly to the Support Bracket

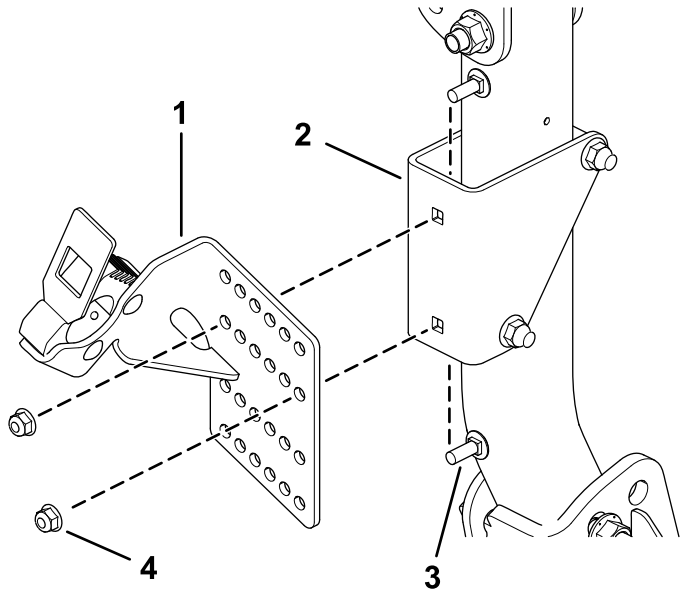
Parts needed for this procedure:

| | |
|---|---------------------------------|
| 2 | Carriage bolt (5/16 x 7/8 inch) |
| 2 | Flange nut (5/16 inch) |

Procedure

Secure the upper trimmer mount assembly to the support bracket using 2 carriage bolts (5/16 x 7/8 inch) and 2 flange nuts (5/16 inch) as shown in Figure 5.

Note: Multiple mounting hole locations are provided to adjust the mounting position of the trimmer for clearance.



g249811

Figure 5

- | | |
|---------------------------------|------------------------------------|
| 1. Upper trimmer mount assembly | 3. Carriage bolt (5/16 x 7/8 inch) |
| 2. Support bracket | 4. Flange nut (5/16 inch) |

6

Installing the Lower Trimmer Mount Assembly

Parts needed for this procedure:

| | |
|---|------------------------------|
| 1 | Lower trimmer mount assembly |
| 2 | Carriage bolt (3/8 x 1 inch) |
| 2 | Flange nut (3/8 inch) |

Procedure

Install the lower trimmer mount assembly to the tie-down hook mounting location on the front, right side of the frame using 2 carriage bolts (3/8 x 1 inch) and 2 flange nuts (3/8 inch) as shown in [Figure 6](#).

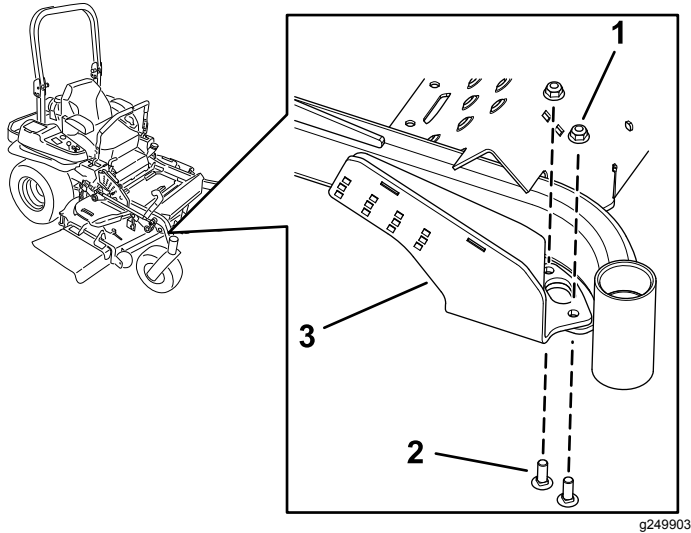


Figure 6

g249903

- 1. Flange nut (3/8 inch)
- 2. Carriage bolt (3/8 x 1 inch)
- 3. Lower trimmer mount assembly

7

Assembling the Trimmer Mount Bracket

Parts needed for this procedure:

| | |
|---|------------------------------------|
| 1 | Trimmer mount bracket |
| 1 | Fist-mount plate |
| 1 | Small fist clamp |
| 1 | Small backer plate |
| 4 | Flange nut (1/4 inch) |
| 2 | Carriage bolt (1/4 x 3/4 inch) |
| 2 | Carriage bolt (1/4 x 1-1/4 inches) |

Procedure

Assemble the trimmer mount bracket ([Figure 7](#)).

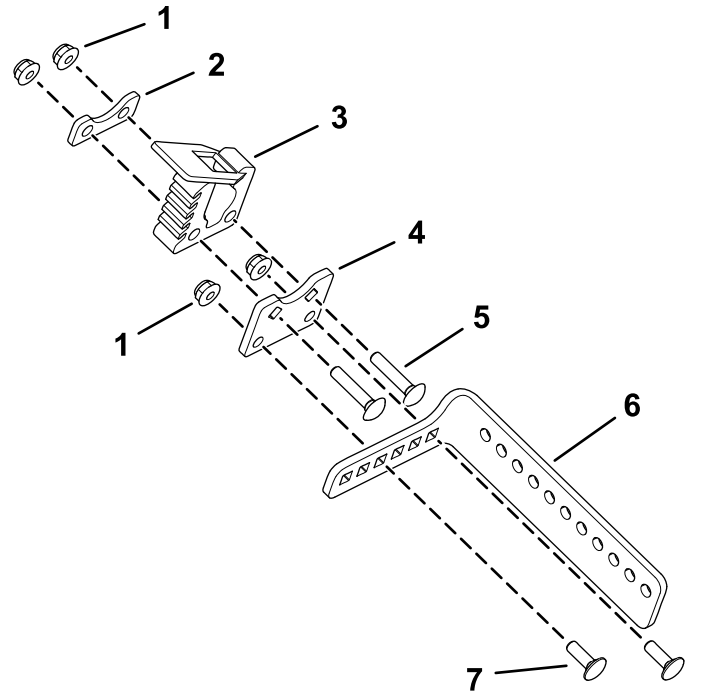


Figure 7

g248809

- 1. Flange nut (1/4 inch)
- 2. Small backer plate
- 3. Small fist clamp
- 4. Fist-mount plate
- 5. Carriage bolt (1/4 x 1-1/4 inches)
- 6. Trimmer mount bracket
- 7. Carriage bolt (1/4 x 3/4 inch)

8

Securing the Trimmer Mount Bracket to the Lower Trimmer Mount Assembly

Parts needed for this procedure:

| | |
|---|--------------------------------|
| 2 | Carriage bolt (1/4 x 3/4 inch) |
| 2 | Flange nut (1/4 inch) |

Procedure

1. Fully lower the mower deck.
2. Secure the trimmer mount bracket assembly to the lower trimmer mount assembly using 2 carriage bolts (1/4 x 3/4 inch) and 2 flange nuts (1/4 inch) as shown in [Figure 8](#).

Note: Multiple mounting hole locations are provided to adjust the mounting position of the trimmer for clearance.

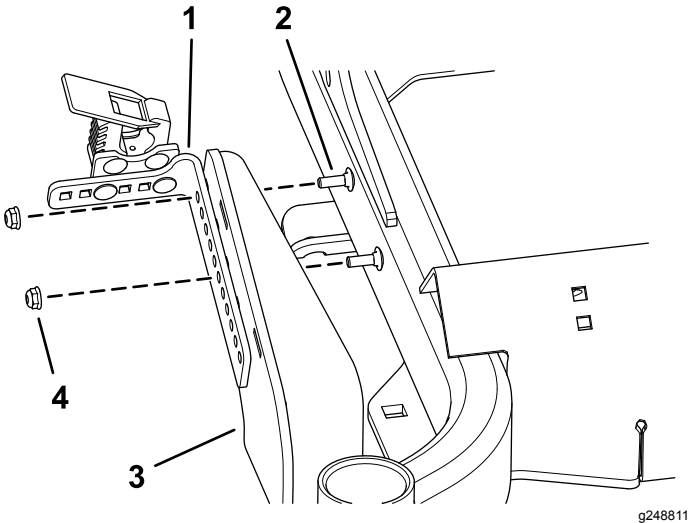


Figure 8

- | | |
|-----------------------------------|---------------------------------|
| 1. Trimmer mount bracket | 3. Lower trimmer mount assembly |
| 2. Carriage bolt (1/4 x 3/4 inch) | 4. Flange nut (1/4 inch) |

9

Securing a Trimmer to the Mount Assemblies

No Parts Required

Procedure

Insert the handle end of the trimmer into the large fist clamp and the trimming end into the small fist clamp.

Check the fit of the trimmer for interference, and adjust the mounting hole locations as required for clearance to the machine.

Notes:



Count on it.