



Bucket Mount Kit

Z Master® 3000, 5000, or 6000 Series Riding Mower

Model No. 137-9216

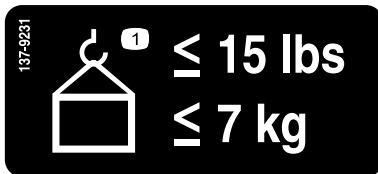
Installation Instructions

Safety

Safety and Instructional Decals



Safety decals and instructions are easily visible to the operator and are located near any area of potential danger. Replace any decal that is damaged or missing.



137-9231

decal137-9231

1. Maximum weight 7 kg (15 lb)

Installation

Loose Parts

Use the chart below to verify that all parts have been shipped.

Description	Qty.	Use
No parts required	—	Prepare the machine.
Bucket-holder mount	1	Install the kit.
Bracket-support hinge	1	
Mount strap—for 48, 52, and 60-inch decks	1	
Mount strap—for 72-inch decks	1	
Top bracket	1	
Knob	1	
Carriage bolt (5/16 x 7/8 inch)	4	
Flange nut (5/16 inch)	3	
Flange-head bolt (3/8 x 1 inch)	1	
Locknut (3/8 inch)	1	



Preparing the Machine

1. Park the machine on a level surface.
2. Move the motion-control levers to the NEUTRAL-LOCK position.
3. Engage the parking brake.
4. Shut off the engine and remove the key.

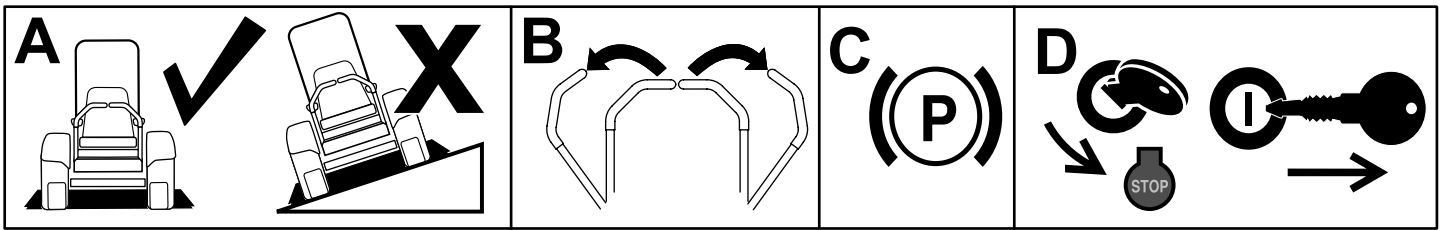


Figure 1

g037289
g037289

Installing the Kit

1. Install the bucket-holder mount into the deck-mounting hole by the discharge plate (Figure 2).

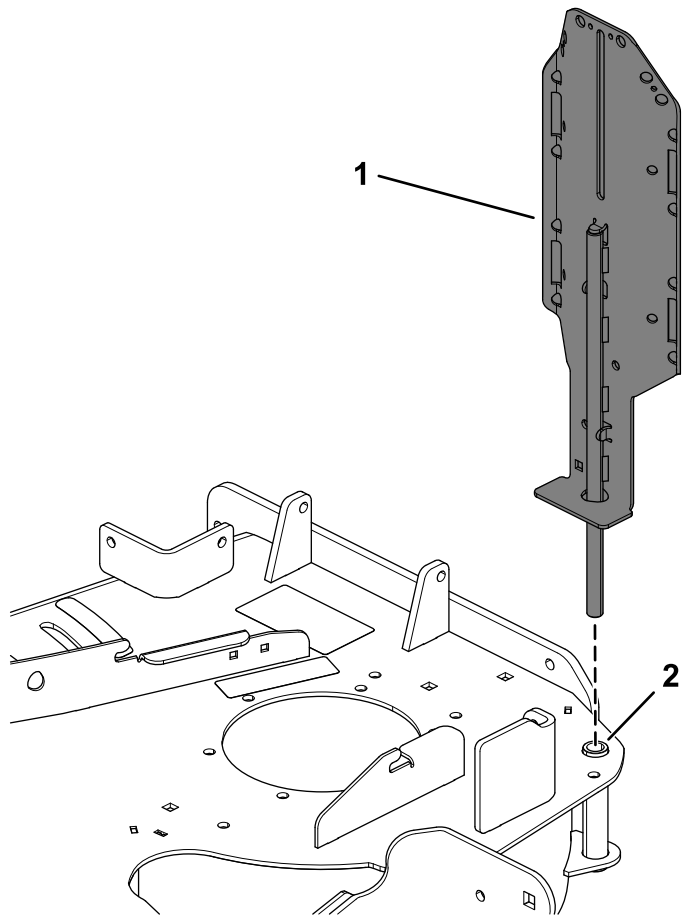


Figure 2

g253477

1. Bucket-holder mount
2. Mounting hole

- Secure the bracket-support hinge and mount strap to the bucket-holder mount using 3 carriage bolts (5/16 x 7/8 inch) and 3 flange nuts (5/16 inch) as shown in [Figure 3](#).

Refer to [Figure 4](#) for the proper mount strap. Use the mount strap with the 51 mm (2 inches) bend offset and 4 holes for 48, 52, and 60-inch decks. Use the mount strap with the 13 mm (1/2 inch) bend offset and 3 holes for 72-inch decks.

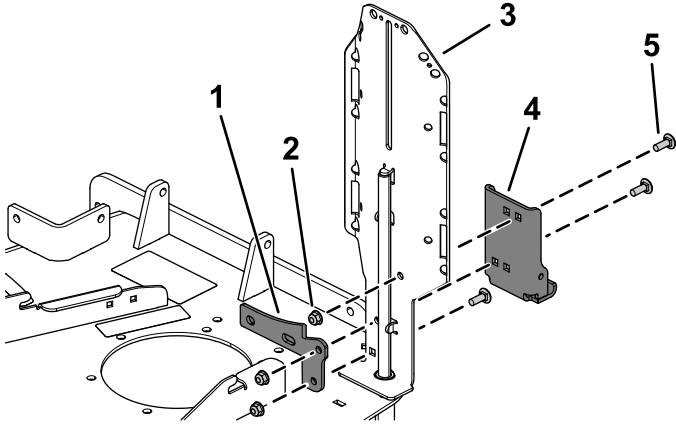


Figure 3

g253479

- | | |
|---------------------------|------------------------------------|
| 1. Mount strap | 4. Bracket-support hinge |
| 2. Flange nut (5/16 inch) | 5. Carriage bolt (5/16 x 7/8 inch) |
| 3. Bucket-holder mount | |

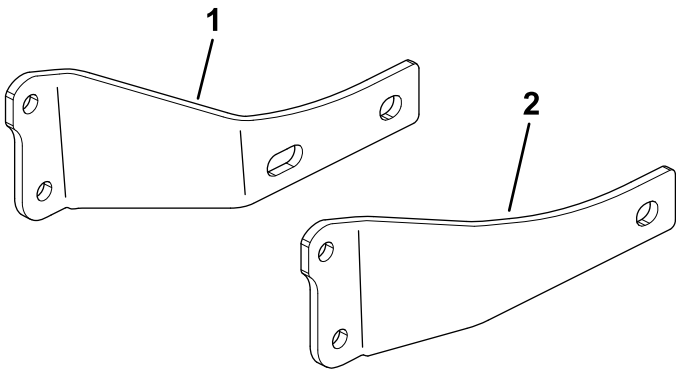


Figure 4

g254249

- | | |
|--|----------------------------------|
| 1. Mount strap for 48, 52, and 60-inch decks | 2. Mount strap for 72-inch decks |
|--|----------------------------------|

- Secure the mount strap to the mower deck using the flange-head bolt (3/8 x 1 inch) and locknut (3/8 inch) as shown in [Figure 5](#).

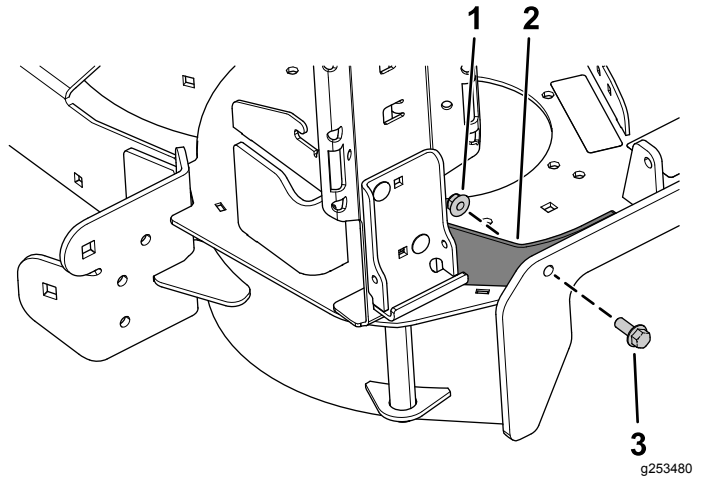


Figure 5

g253480

- | | |
|-----------------------|------------------------------------|
| 1. Locknut (3/8 inch) | 3. Flange-head bolt (3/8 x 1 inch) |
| 2. Mount strap | |

- Secure the top bracket to the bucket-holder mount using the knob and a carriage bolt (5/16 x 7/8 inch) as shown in [Figure 6](#).

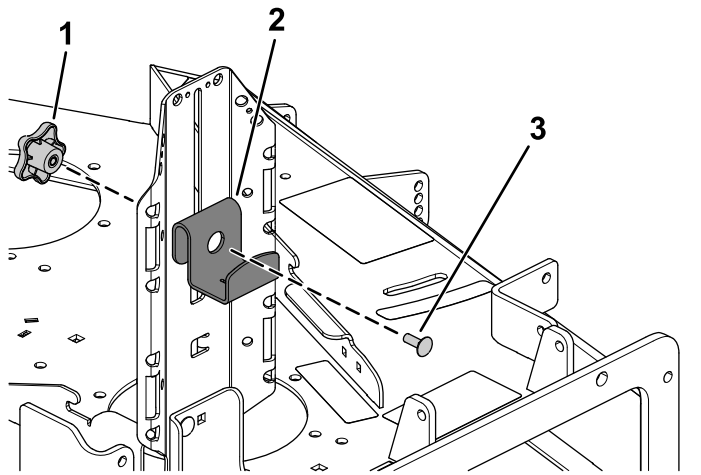


Figure 6

g253478

- | | |
|----------------|------------------------------------|
| 1. Knob | 3. Carriage bolt (5/16 x 7/8 inch) |
| 2. Top bracket | |

Operation

Mounting a Bucket

Use only Toro-approved attachments and accessories.
The maximum capacity is 7 kg (15 lb).

1. Loosen the knob and raise the top bracket. Tighten the knob to hold it in place (Figure 7).
2. Place the bottom lip of the bucket over the bottom ledge of the welded support bracket (Figure 7).
3. Loosen the knob and lower the top bracket as far as possible over the rim of the bucket. Tighten the knob (Figure 7).

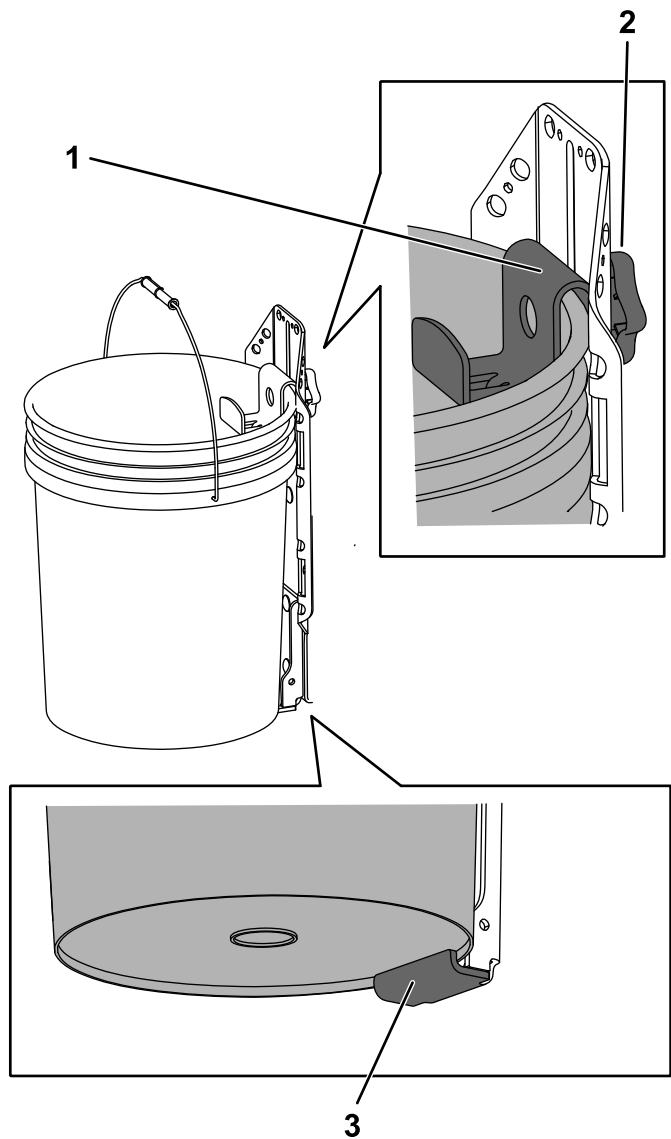


Figure 7

g253491

1. Top bracket over the rim of the bucket
2. Knob
3. Bottom ledge of the support bracket