



# Wing Mount Kit

Groundsmaster® 4000 Series Rotary Mower

Model No. 137-5580

## Installation Instructions

# Installation

## Loose Parts

Use the chart below to verify that all parts have been shipped.

Description	Qty.	Use
No parts required	–	Prepare the machine.
Deck mount	1	Install the kit.
Plate	1	
Spring pin	1	
Spacer	2	
Bolt (3/4 x 4-1/2 inches)	1	
Locknut (3/4 inch)	1	
Cable tie	1	

Determine the left and right sides of the machine from the normal operating position.

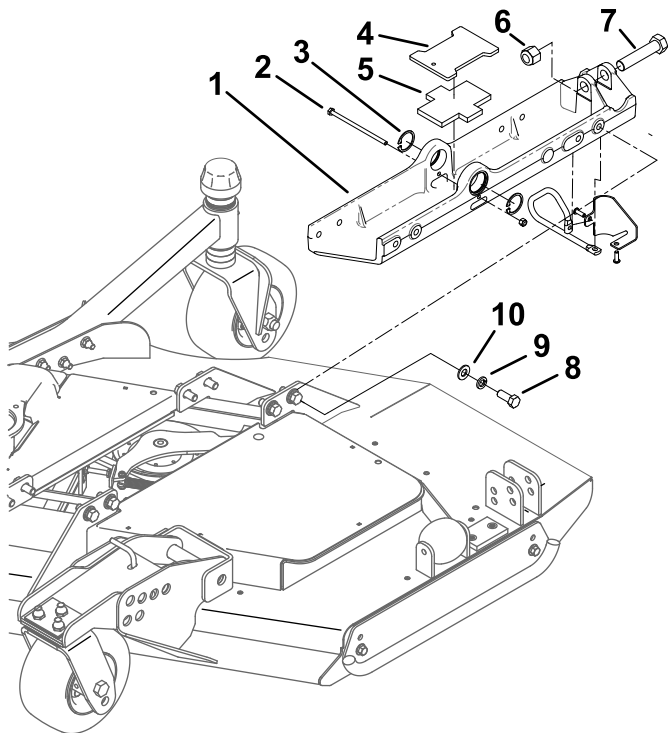
## Preparing the Machine

1. Park the machine on a level surface.
2. Disengage the power takeoff and lower the attachments.
3. Engage the parking brake.
4. Shut off the engine and remove the key.
5. Wait for all movement to stop.
6. Allow machine components to cool.



# Installing the Deck Mount

1. Remove the snap rings on both sides of the U-joint as shown in [Figure 3](#).
2. Remove the caps under the snap rings. This can be done by adding more grease into the U-joint.
3. Remove the existing long bolt ([Figure 3](#)).
4. Remove the plate and rubber cushion ([Figure 3](#)). Discard the plate.
5. Remove the bolts that hold the deck mount to the cutting unit ([Figure 3](#)).
6. Remove the bolt, locknut, and spacers that secure the hydraulic cylinder to the deck mount. Discard the hardware and existing deck mount ([Figure 3](#)).

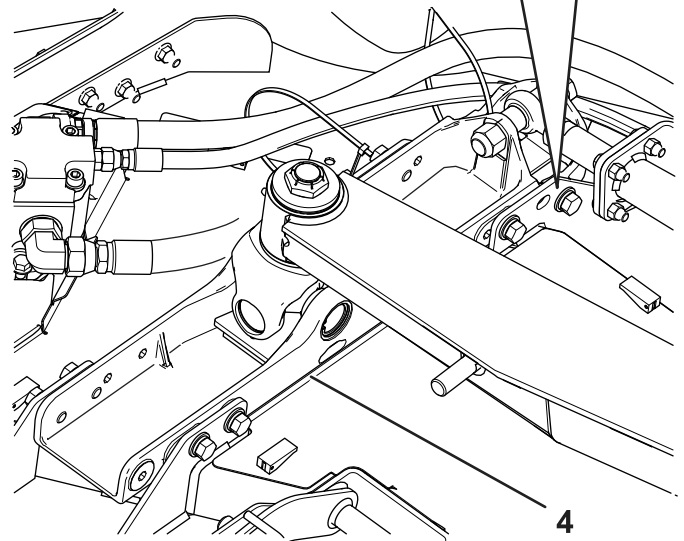
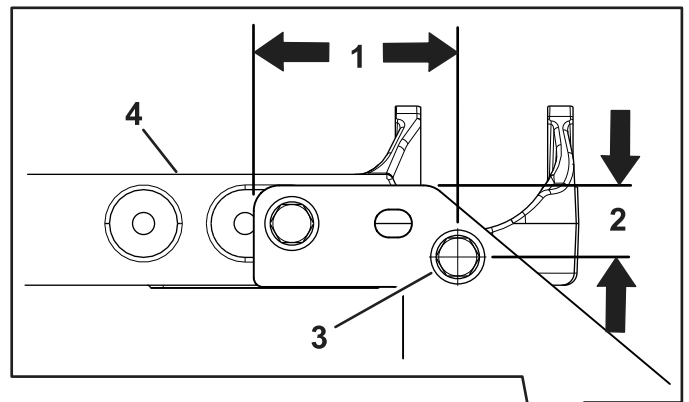


**Figure 1**

g367529

- |                        |                              |
|------------------------|------------------------------|
| 1. Existing deck mount | 6. Locknut (3/4 inch)        |
| 2. Long bolt           | 7. Bolt (3/4 x 4-1/2 inches) |
| 3. Snap ring           | 8. Bolt                      |
| 4. Plate               | 9. Lock washer               |
| 5. Rubber cushion      | 10. Washer                   |

7. Using the new deck mount as a template, locate and drill a 9/16 inch hole into the rear plates on the cutting unit as shown in [Figure 2](#).

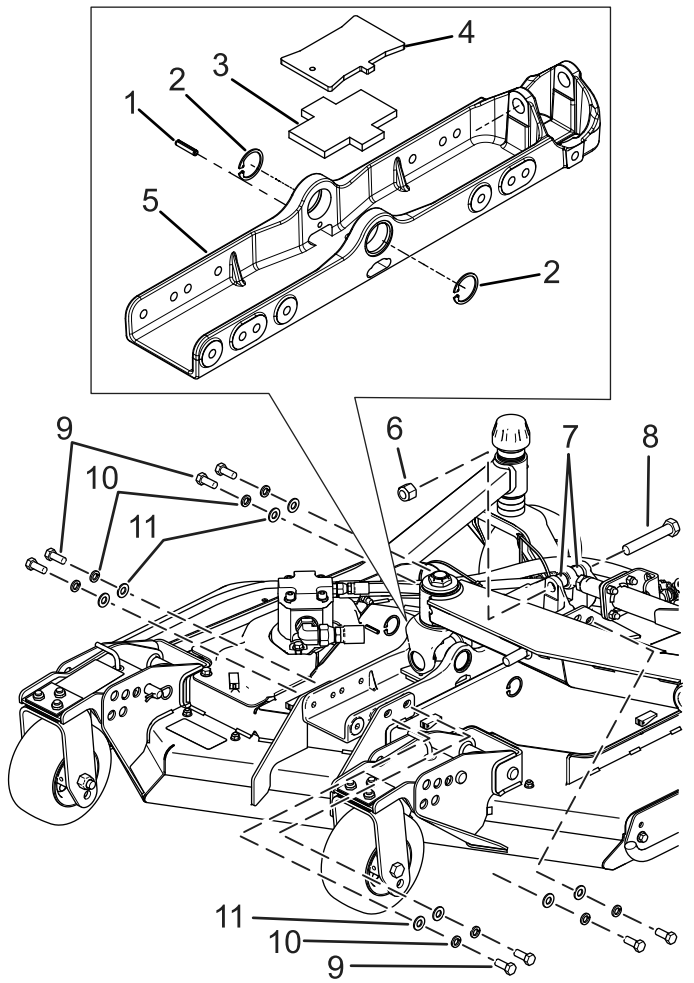


g365598

**Figure 2**

- |                           |                           |
|---------------------------|---------------------------|
| 1. 102 mm (4 inches)      | 3. Drill a 9/16 inch hole |
| 2. 36 mm (1-13/32 inches) | 4. Deck mount             |

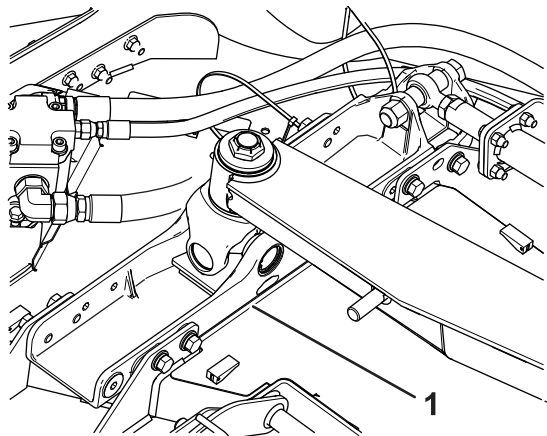
8. Place the new deck mount onto the cutting unit.
9. Install the bolts that secure the deck mount to the cutting unit ([Figure 3](#) and [Figure 4](#)); torque to 102 N·m (75 ft-lb).



**Figure 3**

g365599

- |                       |                              |
|-----------------------|------------------------------|
| 1. Spring pin         | 7. Spacer                    |
| 2. Snap ring          | 8. Bolt (3/4 x 4-1/2 inches) |
| 3. Rubber cushion     | 9. Bolt                      |
| 4. Plate              | 10. Lock washer              |
| 5. Deck mount         | 11. Washer                   |
| 6. Locknut (3/4 inch) |                              |

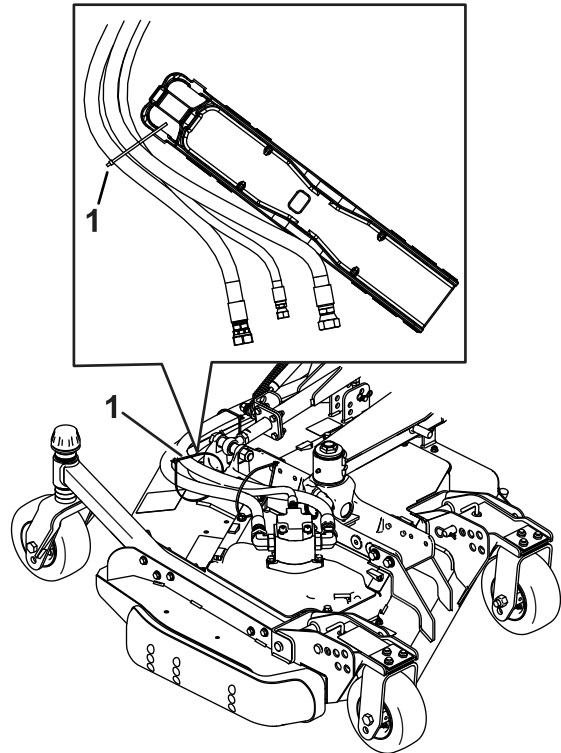


**Figure 4**

g365601

1. Installed deck mount

10. Install the U-joint caps and secure them with the previously removed snap rings (Figure 3).
11. Install the hydraulic cylinder to the deck mount with a bolt (3/4 x 4-1/2 inches), locknut (3/4 inch), and spacers (Figure 3); torque to 136 N·m (100 ft-lb).
12. Install the cable tie (Figure 5).



**Figure 5**

g365600

1. Cable tie

13. Start the machine and check the operation of the cutting unit. Ensure no hoses rub against the machine and if needed, adjust the hoses.



**Count on it.**