



Form No. 3421-506 Rev A

**Count on it.**

**Operator's Manual**

**Pro Force<sup>®</sup> Debris Blower  
Groundsmaster<sup>®</sup> 360 Traction Units**

Model No. 44547—Serial No. 402900001 and Up



This product complies with all relevant European directives; for details, please see the separate product specific Declaration of Conformity (DOC) sheet.

It is a violation of California Public Resource Code Section 4442 or 4443 to use or operate the engine on any forest-covered, brush-covered, or grass-covered land unless the engine is equipped with a spark arrester, as defined in Section 4442, maintained in effective working order or the engine is constructed, equipped, and maintained for the prevention of fire.

The DOT tire information is located on the side of each tire. This information gives load and speed ratings. Replacement tires should have the same or better ratings. Ensure that the tires meet or exceed the weight requirements of your machine.

**⚠ WARNING**

**CALIFORNIA**  
**Proposition 65 Warning**

**Use of this product may cause exposure to chemicals known to the State of California to cause cancer, birth defects, or other reproductive harm.**

# Introduction

The debris blower is towed behind a ride-on machine which is intended to be used by professional, hired operators in commercial applications. It is primarily designed to use wind power to quickly clear large areas of unwanted debris on well-maintained lawns in parks, golf courses, sports fields, and on commercial grounds.

Read this information carefully to learn how to operate and maintain your product properly and to avoid injury and product damage. You are responsible for operating the product properly and safely.

Visit [www.Toro.com](http://www.Toro.com) for product safety and operation training materials, accessory information, help finding a dealer, or to register your product.

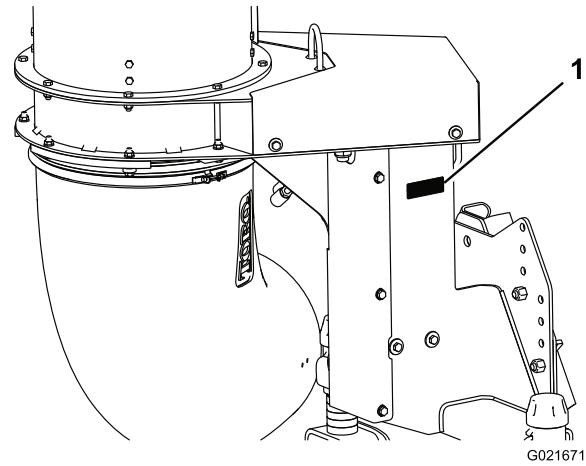
Whenever you need service, genuine Toro parts, or additional information, contact an Authorized Service Dealer or Toro Customer Service and have the model and serial numbers of your product ready. [Figure 1](#) identifies the location of the model and serial numbers on the product. Write the numbers in the space provided.

**Important:** With your mobile device, you can scan the QR code (if equipped) on the serial

**number plate to access warranty, parts, and other product information.**



g262332



G021671

g021671

**Figure 1**

1. Model and serial number location

**Model No.** \_\_\_\_\_

**Serial No.** \_\_\_\_\_

This manual identifies potential hazards and has safety messages identified by the safety alert symbol ([Figure 2](#)), which signals a hazard that may cause serious injury or death if you do not follow the recommended precautions.



g000502

**Figure 2**

1. Safety alert symbol

This manual uses 2 words to highlight information. **Important** calls attention to special mechanical information and **Note** emphasizes general information worthy of special attention.

# Contents

Safety .....	3
General Safety .....	3
Safety and Instructional Decals .....	4
Setup .....	5
1 Removing the Blower from the Crate .....	6
2 Installing the Drive Shaft to the Blower Gear Box Shaft .....	8
3 Installing the Mounting Plate to the Debris Blower Frame .....	8
4 Mounting the Debris Blower to the Traction Unit .....	9
5 Installing the Proximity Switch .....	10
6 Greasing the Machine .....	10
Product Overview .....	11
Controls .....	11
Specifications .....	11
Operation .....	12
Operation Safety .....	12
Adjusting the Blower Nozzle Height .....	13
Operating Tips .....	14
Maintenance .....	15
Maintenance Safety .....	15
Lubrication .....	15
Checking the Gear Box Lubrication .....	16
Checking the Nozzle .....	16
Adjusting the Nozzle Belt .....	17
Storage .....	17

# Safety

This machine has been designed in accordance with ANSI standard B71.4-2017.

## General Safety

This product is capable of amputating hands and feet and throwing objects. Always follow all safety instructions to avoid serious personal injury.

Using this product for purposes other than its intended use could prove dangerous to you and bystanders.

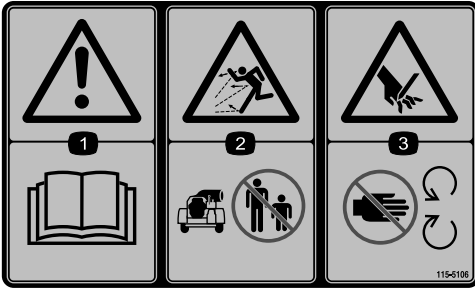
- Read and understand the contents of both this *Operator's Manual* and the operator's manual of the traction unit before using this machine. Ensure that everyone using this product knows how to use this machine and the traction unit and understands the warnings.
- Use your full attention while operating the machine. Do not engage in any activity that causes distractions; otherwise, injury or property damage may occur.
- Do not put your hands or feet near moving components of the machine.
- Do not operate the machine without all guards and other safety protective devices in place and working on the machine.
- Keep children, bystanders, and pets out of the operating area. Never allow children to operate the machine.
- Always shut off the engine, remove the key (if equipped), wait for all moving parts to stop, and allow the machine to cool before adjusting, repairing, cleaning, or storing the machine.

Improperly using or maintaining this machine can result in injury. To reduce the potential for injury, comply with these safety instructions and always pay attention to the safety-alert symbol ([Figure 2](#)), which means Caution, Warning, or Danger—personal safety instruction. Failure to comply with these instructions may result in personal injury or death.

# Safety and Instructional Decals



Safety decals and instructions are easily visible to the operator and are located near any area of potential danger. Replace any decal that is damaged or missing.



**115-5106**

decal115-5106

1. Warning—read the *Operator's Manual*.
2. Thrown object hazard—keep bystanders away.
3. Cutting/dismemberment hazard; hand—stay away from moving parts.



**133-8061**

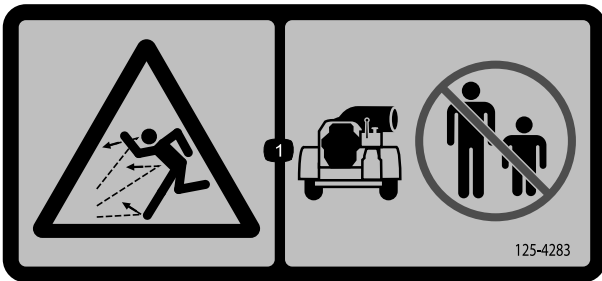
decal133-8061



**119-0217**

decal119-0217

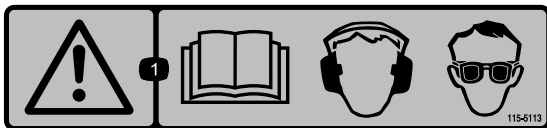
1. Warning—stop the engine; stay away from moving parts; keep all guards and shields in place.



**125-4283**

decal125-4283

1. Thrown object hazard—keep bystanders away.



**115-5113**

decal115-5113

1. Warning—read the *Operator's Manual*; wear hearing and eye protection.

# Setup

## Loose Parts

Use the chart below to verify that all parts have been shipped.

Procedure	Description	Qty.	Use
<b>1</b>	No parts required	–	Remove the blower from the crate.
<b>2</b>	Drive shaft assembly Roll pin Bolt, 5/16 x 1-3/4 inch Locknut, 5/16 inch	1 1 2 2	Install the drive shaft to the blower gear box shaft.
<b>3</b>	Mounting plate Bolt, 1/2 x 1-1/4 inches Locknut, 1/2 inch	1 4 4	Install the mounting plate to the debris blower frame.
<b>4</b>	Debris blower assembly Locking pin Hairpin cotter	1 1 1	Mount the blower to the traction unit.
<b>5</b>	Proximity switch assembly Sensor plate Carriage bolt, 5/16 x 1-1/4 inch Flange nut, 5/16 inch	1 1 2 2	Install the proximity switch
<b>6</b>	General Purpose Lithium Base Grease	A/R	Grease the machine

**Note:** Determine the left and right sides of the machine from the normal operating position.

**Note:** To install and operate the debris blower, the traction unit must be a 4 Wheel Drive machine which is equipped with the Front Quick Attach Front Frame, Model 30509 and one of the following; the Electric Accessory Kit, part no. 115–0019 or the Joystick Kit, model 31219.

# 1

## Removing the Blower from the Crate

No Parts Required

### Procedure

**Important:** Install the jack stand to stabilize the blower before the blower frame is unbolted from the shipping crate or the crate is removed.

1. Remove the top of the crate (Figure 3).

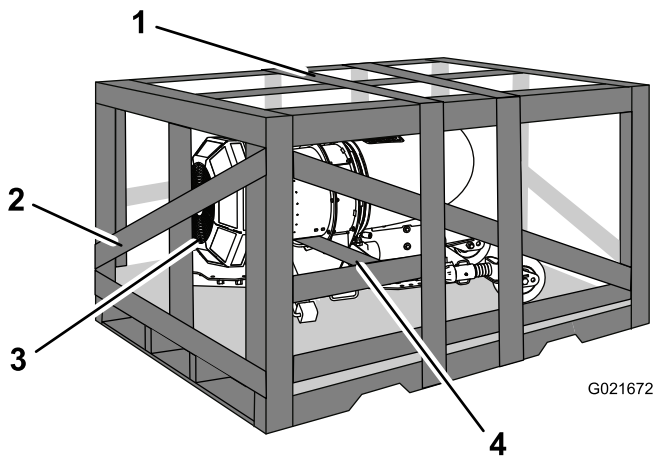


Figure 3

G021672

g021672

- |                 |                               |
|-----------------|-------------------------------|
| 1. Top of crate | 3. Top of machine             |
| 2. End of crate | 4. Board under blower housing |

2. Remove the end of the crate which is toward the top of the machine (Figure 3).
3. Remove the board that is under the blower housing (Figure 3).
4. Secure a strap to the top end assembly and lift the pallet until the crate and blower is standing up vertically (Figure 4).

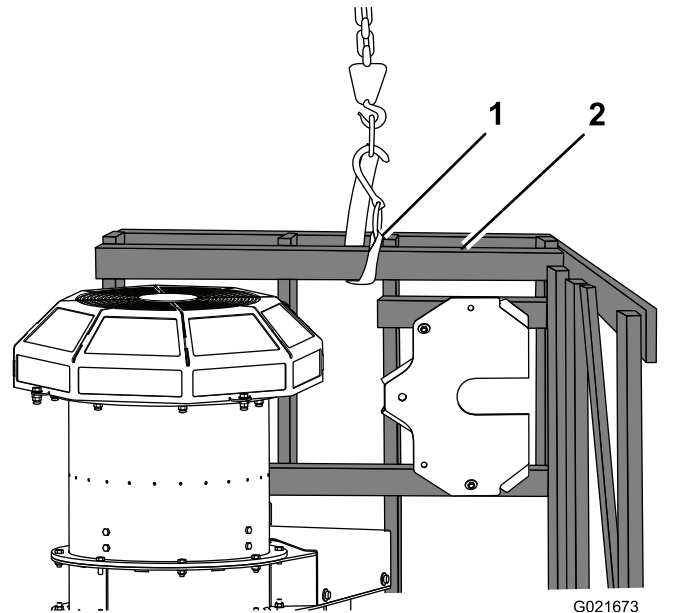


Figure 4

g021673

- |               |                     |
|---------------|---------------------|
| 1. Lift strap | 2. Top end assembly |
|---------------|---------------------|

5. Remove the snapper pin securing the jack-stand tube to the storage tube (Figure 5). Remove the jack assembly from the storage position.

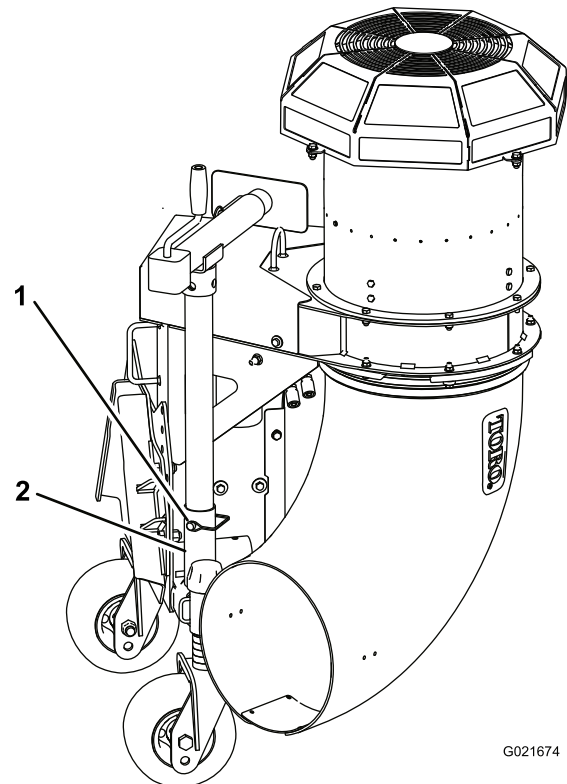


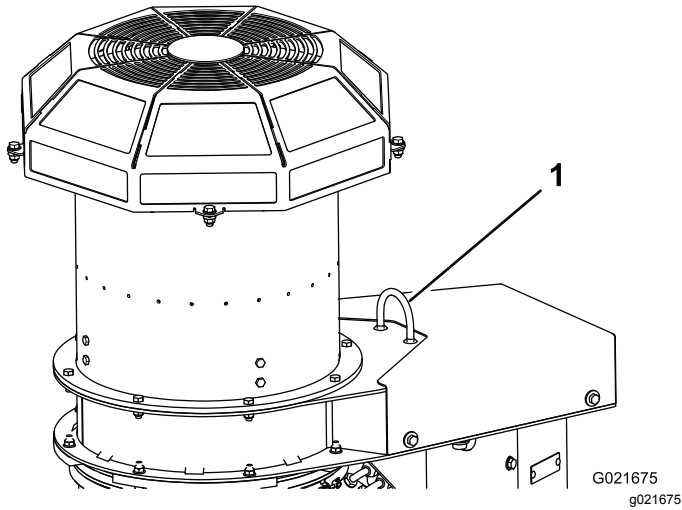
Figure 5

g021674

- |                |                    |
|----------------|--------------------|
| 1. Snapper pin | 2. Jack-stand tube |
|----------------|--------------------|

6. Remove the strap from the pallet and attach it to the lift loop on the blower (Figure 6).

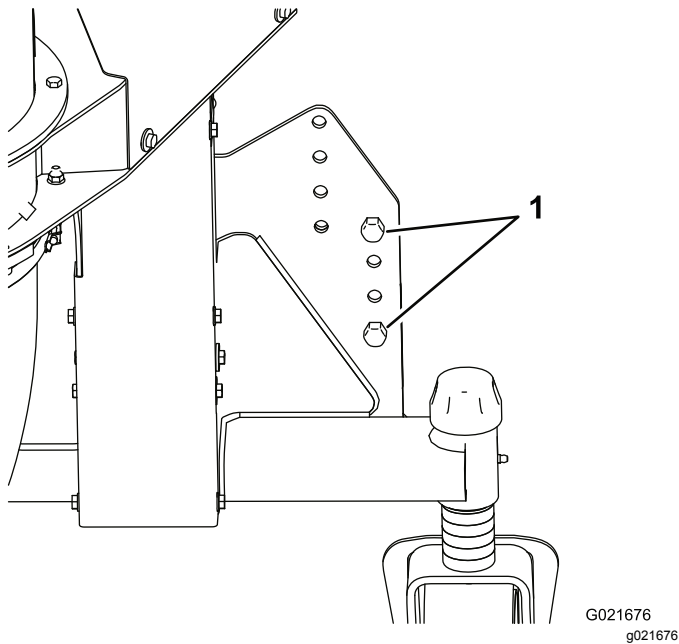
- Lift the blower until the strap is tight.



**Figure 6**

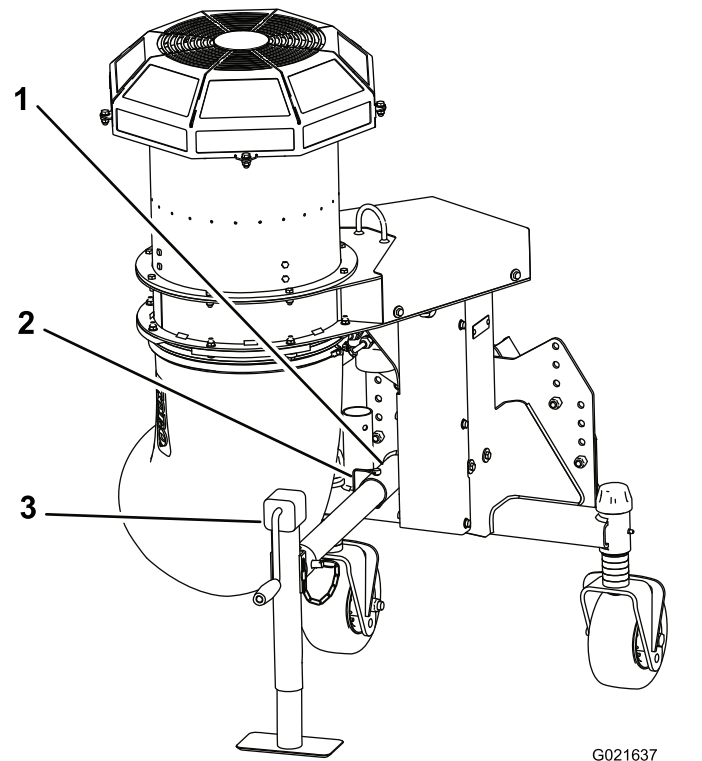
- Lift loop

- Carefully remove the bolts holding the blower to the wood pallet.
- Slide the crate away from the blower and lower the blower until the castor wheels touch the floor keeping the strap tight (Figure 7).



**Figure 7**

- Bolts



**Figure 8**

- Frame tube
- Snapper pin
- Jack stand

- Remove the cable tie securing the crank handle to the jack crank.
- Crank the jack stand down until the jack pad is level with the castor wheel tires.
- Remove the strap from the blower lift loop.

- Insert the jack-stand tube into the frame tube, align the holes, and secure it into position with the snapper pin (Figure 8).

# 2

## Installing the Drive Shaft to the Blower Gear Box Shaft

Parts needed for this procedure:

1	Drive shaft assembly
1	Roll pin
2	Bolt, 5/16 x 1-3/4 inch
2	Locknut, 5/16 inch

### Procedure

1. Remove the cable tie securing the drive shaft to the shipping crate.
2. Slide the drive shaft onto the gear box shaft.
3. Align the mounting holes in the gear box shaft with the holes in the drive shaft and slide them together.

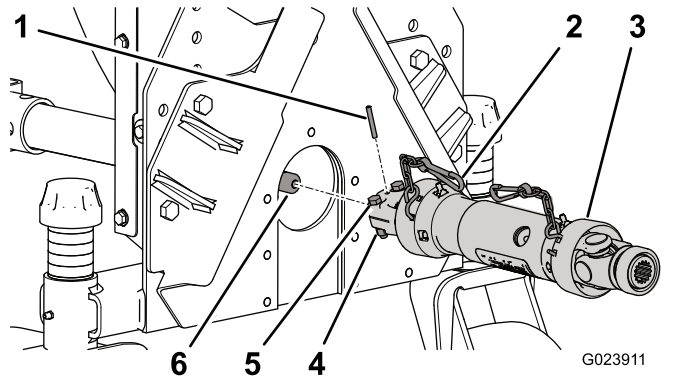


Figure 9

- |                  |                             |
|------------------|-----------------------------|
| 1. Roll pin      | 4. Bolts, 5/16 x 1-3/4 inch |
| 2. Safety chains | 5. Locknuts, 5/16 inch      |
| 3. Drive shaft   | 6. Gear box shaft           |

4. Secure the assembly with a roll pin (Figure 9).
5. Secure the drive shaft to the gear box shaft with 2 bolts (5/16 x 1-3/4 inch) and 2 locknuts (5/16 inch) (Figure 9).
6. Torque the bolts to 18 to 25 N·m (175 to 225 in-lb).
7. Remove the cable tie that is keeping the drive shaft together
8. Secure the safety chain to the blower frame (Figure 9).

# 3

## Installing the Mounting Plate to the Debris Blower Frame

Parts needed for this procedure:

1	Mounting plate
4	Bolt, 1/2 x 1-1/4 inches
4	Locknut, 1/2 inch

### Procedure

1. Remove the bolts securing the mounting plate to the crate (Figure 10).

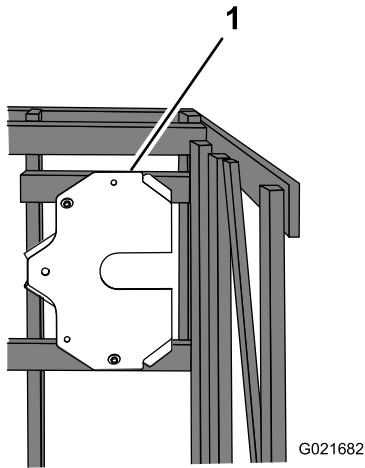
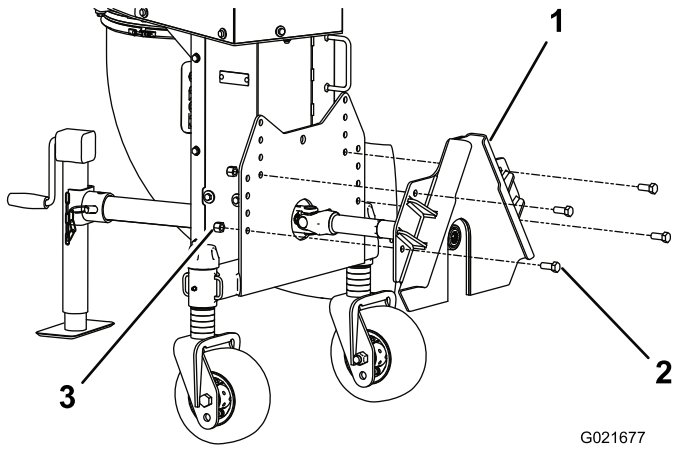


Figure 10

1. Mounting plate
- 
2. Install the mounting plate to debris blower frame with 4 bolts (1/2 x 1-1/4 inch) and 4 locknuts (1/2 inch) (Figure 11).

**Note:** Use the lower set of holes on each side of the mounting plate.



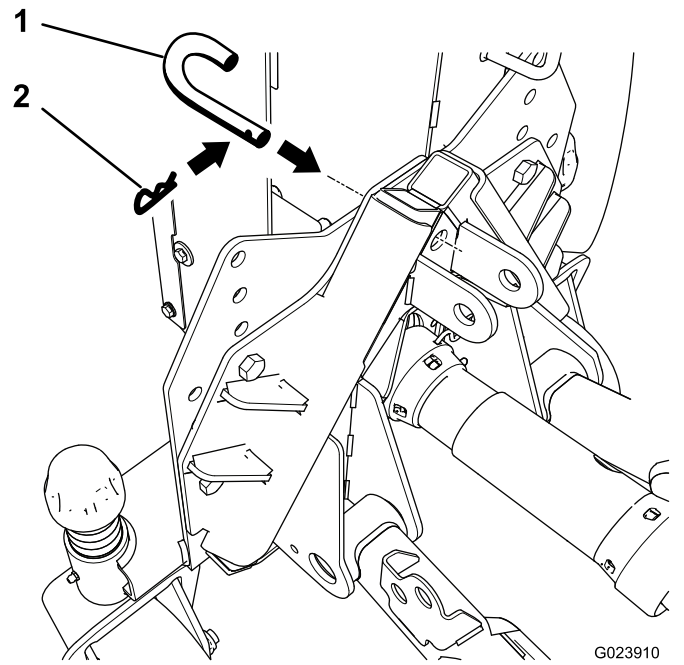


G021677  
g021677

**Figure 11**

- 1. Mounting plate
- 2. Bolts
- 3. Locknuts

3. Torque the bolts to 92 to 113 N·m (68 to 82 ft-lb).

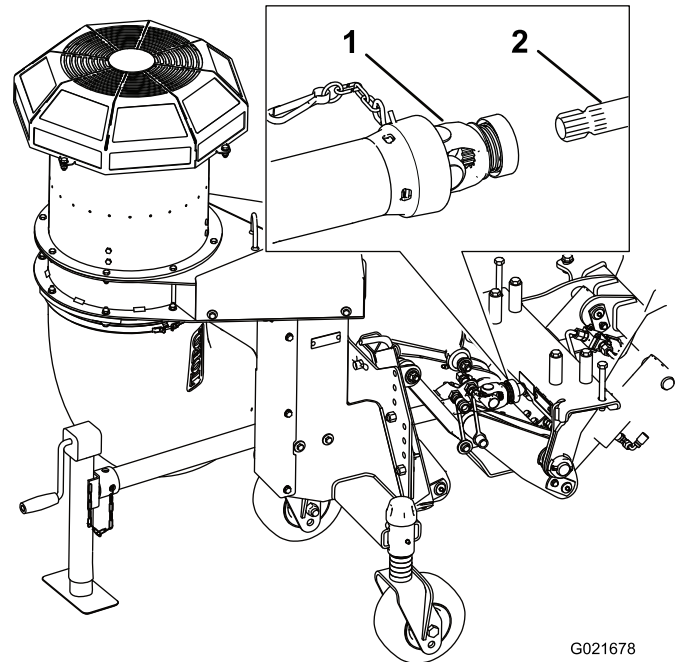


G023910  
g023910

**Figure 12**

- 1. Locking pin
- 2. Hairpin cotter

5. Install the drive shaft to the quick attach frame by sliding the quick coupler onto the shaft (Figure 13).



G021678  
g021678

**Figure 13**

- 1. Drive shaft
- 2. Quick attach frame shaft

6. Secure the safety chain to the quick attach frame (Figure 13).  
7. Remove the dust plugs from the hydraulic couplers and ensure that the couplers are free of any dirt or debris.

# 4

## Mounting the Debris Blower to the Traction Unit

### Parts needed for this procedure:

1	Debris blower assembly
1	Locking pin
1	Hairpin cotter

### Procedure

1. Remove any attachments from the front of the machine.
2. Move the traction unit into position behind the attachment adapter.
3. Raise the traction unit adapter into the attachment adapter.

**Note:** Raise the jack stand higher than the castors.

4. Insert the locking pin through the adapters and secure it with a hairpin cotter (Figure 12).

- Connect the attachment hydraulic hose couplers to the hydraulic couplers on the traction unit rear auxiliary hydraulic power kit.

**Important:** Whenever the hydraulic hose couplers are disconnected, make sure the dust plugs are cleaned and then installed to prevent contamination from entering either hydraulic system.

# 5

## Installing the Proximity Switch

Parts needed for this procedure:

1	Proximity switch assembly
1	Sensor plate
2	Carriage bolt, 5/16 x 1-1/4 inch
2	Flange nut, 5/16 inch

### Procedure

- Using the hole in the bottom of the front frame, loosely mount the proximity switch with the washers and jam nuts (Figure 14).

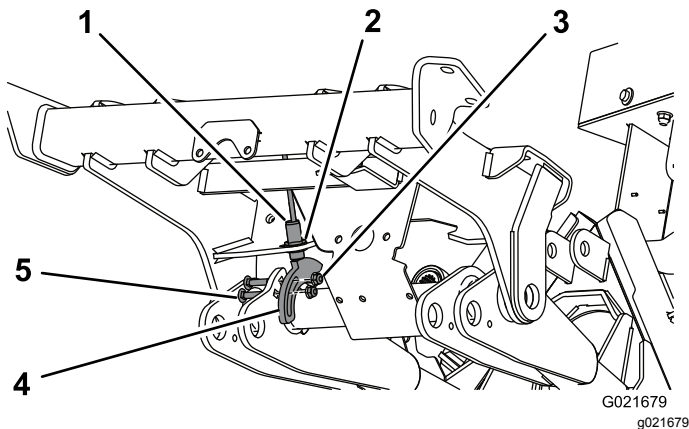


Figure 14

- |                       |                  |
|-----------------------|------------------|
| 1. Proximity switch   | 4. Carriage bolt |
| 2. Jam nut and washer | 5. Sensor plate  |
| 3. Flange nut         |                  |

- Loosely mount the sensor plate to the left lift arm with 2 carriage bolts (5/16 x 1-1/4 inch) and 2 flange nuts.

**Note:** Do not tighten the jam nuts at this time.

- Position the sensor plate as shown in Figure 14.

**Note:** Make sure the switch does not contact the sensor plate.

- Start the machine, raise the blower, then stop the machine.
- Adjust the sensor plate until it aligns with the proximity switch and tighten the carriage bolt nuts. Ensure that it does not contact the proximity switch.
- Using the jam nuts, adjust the proximity switch up or down until the gap between the switch plunger and the sensor plate is 3.8 to 4.3 mm (0.150 to 0.170 inch) (Figure 15).
- Torque the jam nuts to 20 N·m (15 ft-lb) when the gap is attained.

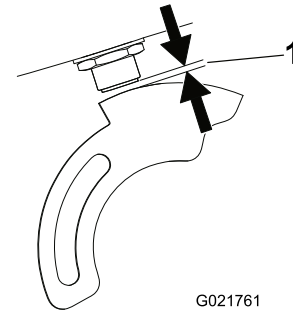


Figure 15

- 3.8 to 4.3 mm (0.150 to 0.170 inch) gap

- Connect the wires from the proximity switch to the front attachment up switch on the Groundsmaster 360 electrical accessory kit
- When the switch is adjusted correctly, the blower should shut off if it is raised.

**Note:** When the traction unit is converted back to a mowing machine, the PTO will not come on when the front attachment is in the fully raised position. To engage the mower, the front attachment must be fully lowered.

# 6

## Greasing the Machine

Parts needed for this procedure:

A/R	General Purpose Lithium Base Grease
-----	-------------------------------------

# Product Overview

## Controls

### Raise/Lower Front Attachment Switch

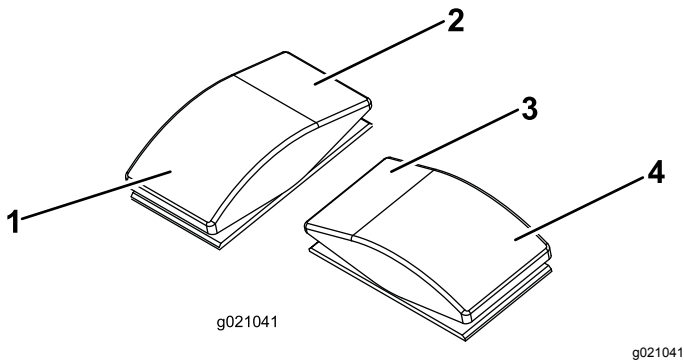
Press the front or back of the rocker switch to raise or lower the front attachment (Figure 16).

#### **⚠ WARNING**

Holding down the power down or front attachment lower switch can cause significant hydraulic system damage and result in front attachment damage.

### Nozzle Direction Switch

Press the front or back of the rocker switch to rotate the nozzle to the desired direction (Figure 16).

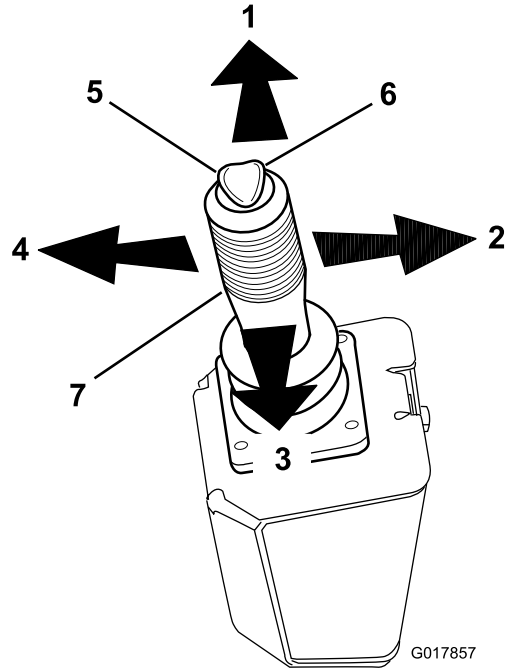


**Figure 16**

1. Tap to float the front attachment down. Hold the button to power down the attachment.
2. Press to raise and hold the front attachment.
3. Press to rotate the blower nozzle right.
4. Press to rotate the blower nozzle left.

### Joystick (Optional)

**Note:** All references to right and left orientation are determined by normal operating position.



**Figure 17**

1. Joystick forward
2. Joystick right
3. Joystick back
4. Joystick left
5. Left-hand toggle
6. Right-hand toggle
7. Joystick

Joystick Action	Function
Forward	Lowers the blower
Back	Raises the blower
Left	Rotates the blower nozzle to the left
Right	Rotates the blower nozzle to the right
Left toggle	Do not use this function
Right toggle	Do not use this function

## Specifications

Weight	171 kg. (376 lb.)
--------	-------------------

# Operation

**Note:** Determine the left and right sides of the machine from the normal operating position.

**Important:** Do not operate the machine without the fan guard and gear-case guard in place (Figure 18).

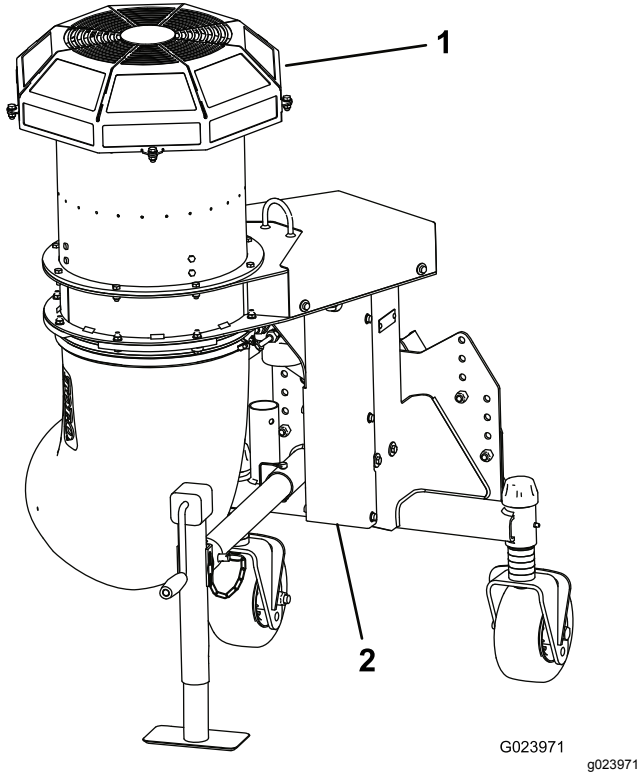


Figure 18

1. Fan guard                      2. Gear case guard

operate the machine unless they are present and functioning properly.

- Do not modify this equipment in any manner.

## During Operation Safety

- The owner/operator can prevent and is responsible for accidents that may cause personal injury or property damage.
- Wear appropriate clothing, including eye protection; long pants; substantial, slip-resistant footwear; and hearing protection. Tie back long hair and do not wear loose jewelry.
- Do not operate the machine while ill, tired, or under the influence of alcohol or drugs.
- Use your full attention while operating the machine. Do not engage in any activity that causes distractions; otherwise, injury or property damage may occur.
- Discharged air has considerable force and could cause injury or loss of footing. Stay away from the blower nozzle when the machine is operating.
- Keep all bystanders away; shut off the machine when bystanders enter the area, do not direct discharge toward them.
- Do not carry passengers on the machine and keep bystanders and pets away from the machine during operation.
- Operate the machine only in good visibility to avoid holes or hidden hazards.
- Look behind and down before backing up to be sure of a clear path.
- Use care when approaching blind corners, shrubs, trees, or other objects that may obscure your vision.
- Never leave a running machine unattended.
- If the machine ever vibrates abnormally, stop the machine immediately, shut off the engine, remove the key, wait for all moving parts to stop, and inspect for damage. Repair all damage to the machine before resuming operation.
- Reduce speed when operating on rough, uneven terrain, and near curbs, holes, and other sudden changes in terrain.

## Operation Safety

### Before Operation Safety

- Never allow children or untrained people to operate or service the machine. Local regulations may restrict the age of the operator. The owner is responsible for training all operators and mechanics.
- Become familiar with the safe operation of the equipment, operator controls, and safety signs.
- Always wait for all moving parts to stop and allow the machine to cool before adjusting, repairing, cleaning, or storing the machine. Know how to stop the machine quickly.
- Keep all guards, safety devices, and decals in place. Repair or replace all safety devices and replace all illegible or missing decals. Do not

### Slope Safety

- Slopes are a major factor related to loss of control and rollover accidents, which can result in severe injury or death. You are responsible for safe slope operation. Operating the machine on any slope requires extra caution.
- Review the traction unit specifications to ensure that you do not exceed its slope capabilities.
- Evaluate the site conditions to determine if the slope is safe for machine operation, including

surveying the site. Always use common sense and good judgment when performing this survey.

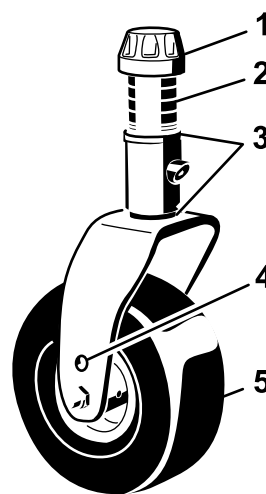
- Review the slope instructions, listed below, for operating the machine on slopes. Before you operate the machine, review the site conditions to determine whether you can operate the machine in the conditions on that day and at that site. Changes in the terrain can result in a change in slope operation for the machine.
  - Avoid starting, stopping, or turning the machine on slopes. Avoid making sudden changes in speed or direction. Make turns slowly and gradually.
  - Do not operate a machine under any conditions where traction, steering, or stability is in question.
  - Remove or mark obstructions such as ditches, holes, ruts, bumps, rocks, or other hidden hazards. Tall grass can hide obstructions. Uneven terrain could overturn the machine.
  - Be aware that operating the machine on wet grass, across slopes, or downhill may cause the machine to lose traction.
  - Use extreme caution when operating the machine near drop-offs, ditches, embankments, water hazards, or other hazards. The machine could suddenly roll over if a wheel goes over the edge or the edge caves in. Establish a safety area between the machine and any hazard.

## Adjusting the Blower Nozzle Height

The blower nozzle can be operated at a height range from 114 to 216 mm (4.5 to 8.5 inches). To adjust the blower nozzle height, position the castor wheel axles in the upper or lower holes of the castor forks and add or remove an equal number of spacers from the castor forks.

1. Start the engine and raise the blower off the floor so the castor wheels can be changed.
2. Stop the engine and remove the key after the blower is raised.
3. Position the castor wheel axles in the same holes in both castor forks (Figure 19).

**Note:** Use the lower castor fork axle mounting holes to attain higher blower nozzle height.



G008866

g008866

Figure 19

## After Operation Safety

- Park the machine on a level surface; shut off the engine, remove the key, wait for all moving parts to stop, and allow the machine to cool before adjusting, repairing, cleaning, or storing the machine.
- Only disconnect the machine from the traction unit while on a level surface.
- Keep all parts of the machine in good working condition and all hardware tightened.
- Replace all worn, damaged, or missing decals.

- |                   |                        |
|-------------------|------------------------|
| 1. Tensioning cap | 4. Axle mounting holes |
| 2. Spacers        | 5. Castor Wheel        |
| 3. Shims          |                        |

4. Remove the tensioning cap from the spindle shaft (Figure 19) and slide the spindle out of the castor arm.
5. Put the 2 shims (1/8 inch) onto the spindle shaft as they were originally installed.

**Note:** These shims are required to achieve a level across the entire width of the blower.

6. Slide the appropriate number of 1/2 inch spacers onto the spindle shaft to get the desired height; then slide the washer onto the shaft.
7. Push the castor spindle through the castor arm.
8. Install the shims (as they were originally installed) and the remaining spacers onto the spindle shaft.
9. Install the tensioning cap to secure the assembly.

# Operating Tips

## **⚠ WARNING**

Discharged air has considerable force and could cause injury or loss of footing.

- **Stay away from nozzle opening when machine is operating.**
- **Keep bystanders away from nozzle opening when machine is running.**
- Practice operating the blower. It is advisable to blow the same direction the wind is blowing to prevent material from blowing back into the cleared area.
- Be alert, slow down, and use caution when making turns. Look behind and to the side before changing directions.
- Be aware of the blower nozzle direction and do not point it at anyone.
- Use care when approaching blind corners, shrubs, trees, or other objects that may obscure vision.
- Check carefully for overhead clearances (i.e. branches, doorways, electrical wires) before driving under any objects and do not allow them to contact the blower screen.
- Reduce your speed when making sharp turns and when turning on hillsides.
- Before backing up, look to the rear and ensure that no one is behind the machine.
- Use caution when blowing around newly planted sod as the force of the air could disrupt the grass.
- Stay away from the nozzle opening when the machine is operating. Keep all bystanders away from the nozzle opening and don't direct discharge toward bystanders.
- **Do not take an injury risk.** When a person or pet appears unexpectedly in or near the operating area, **stop operation.** Careless operation, combined with terrain angles, ricochets or improperly positioned guards can lead to thrown object injuries. Do not resume operation until the area is cleared.

**Important:** Raise the blower before transporting. If the nozzle is left in the down position during transport, the nozzle may contact the ground and damage to the nozzle may occur.

# Maintenance

**Note:** Determine the left and right sides of the machine from the normal operating position.

## Maintenance Safety

- Before cleaning, servicing, or adjusting the machine, do the following:
  - Park the machine on a level surface.
  - Wait for all moving parts to stop.
  - Remove the machine from the traction unit.
  - Lower the jack stand
  - Allow machine components to cool before performing maintenance.
- Perform only those maintenance instructions described in this manual. If major repairs are ever needed or you need assistance, contact an authorized Toro distributor.
- Support the machine with blocks or jack stands when working beneath it.
- Ensure that all guards are installed securely after maintaining or adjusting the machine.
- Do not allow untrained personnel to service the machine.
- Keep all parts in good working condition and all fasteners tightened. Replace all damaged or missing decals.
- Do not interfere with the intended function of a safety device or reduce the protection provided by a safety device. Check their proper operation regularly.
- If major repairs are ever necessary or assistance is required, contact an authorized Toro distributor.
- Altering this machine in any manner may affect the operation of the machine, performance, durability, or its use may result in injury or death. Such use could void the product warranty of The Toro® Company.

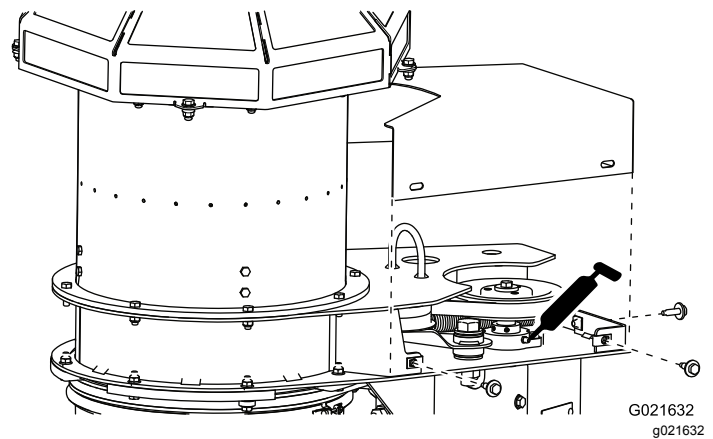
## Lubrication

**Service Interval:** Every 50 hours

The debris blower has bearings and bushings that must be lubricated regularly. If the machine is operated under normal conditions, lubricate bearings with No. 2 general purpose lithium base grease after every 50 hours of operation. Lubricate fittings immediately after every washing, regardless of the interval listed.

The lubrication points are as follows:

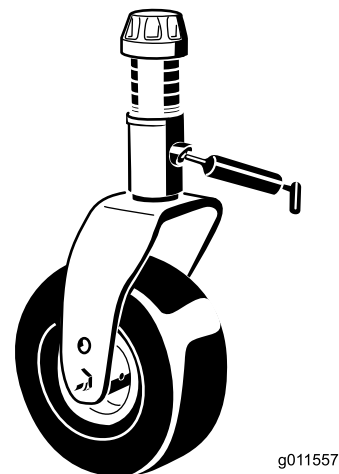
Drive pulley (Figure 20)



**Figure 20**

Shown with cover removed

Castor wheel shaft (2) (Figure 21)



**Figure 21**

Drive shaft (Figure 22)

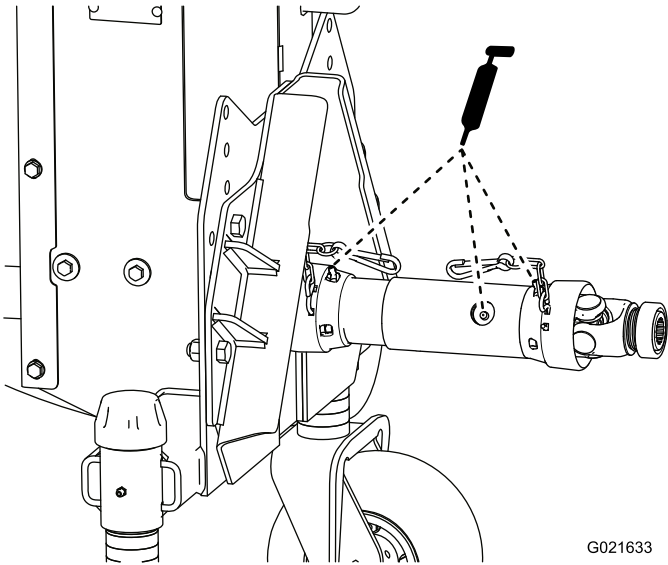


Figure 22

G021633  
g021633

## Checking the Gear Box Lubrication

**Service Interval:** Every 50 hours

**Gear box capacity:** 207 ml (7 oz).

1. Position the machine and blower on a level surface and lower the blower.
2. Remove the 5 bolts and washers securing the gear case cover to the blower (Figure 23).

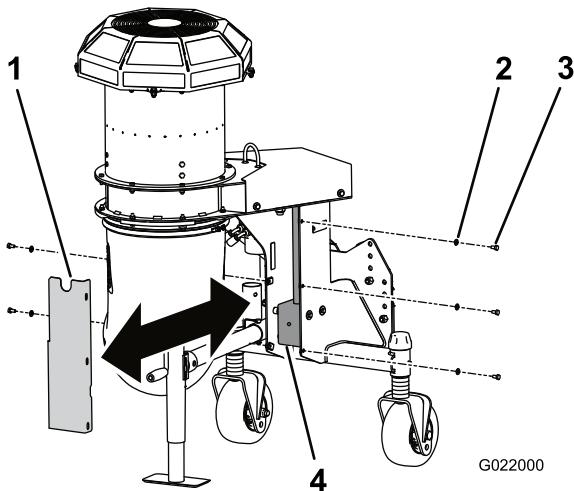


Figure 23

G022000

g022000

- |           |             |
|-----------|-------------|
| 1. Cover  | 3. Screw    |
| 2. Washer | 4. Gear box |

3. Remove the cover to expose the blower gear case (Figure 23).

4. Remove the check/fill plug from the side of the gear box (Figure 24).

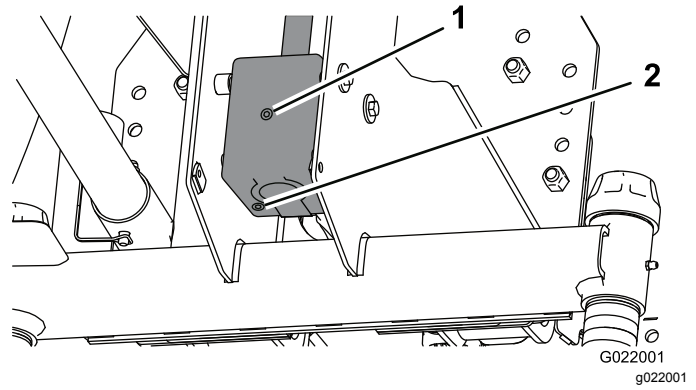


Figure 24

G022001  
g022001

- |                    |               |
|--------------------|---------------|
| 1. Check/fill plug | 2. Drain plug |
|--------------------|---------------|

5. Check the oil level to make sure it is up to the plug hole in the gear box. If the lubricant level is low, add enough SAE 80-90 weight gear lube to raise the level up to the hole.
6. Install the check/fill plug to the gear box.
7. Install the cover.

## Checking the Nozzle

**Service Interval:** Before each use or daily

### Checking the Nozzle Clamp

1. Check the nozzle clamp (Figure 25) daily to ensure that is tight.

**Note:** The nozzle can loosen if it is dragged over obstacles or through low areas in the terrain.

2. Tighten the clamp fasteners to maintain a gap of 1.3 cm (0.50 inch).

The nozzle must rotate freely when moved by hand.

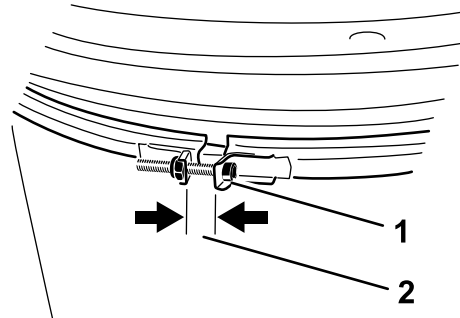


Figure 25

G023909

g023909

- |                 |                          |
|-----------------|--------------------------|
| 1. Nozzle clamp | 2. 1.3 cm (.50 inch) gap |
|-----------------|--------------------------|



## Cleaning the Nozzle Guides

Check and remove any grass, dirt or debris buildup around and in between the nozzle guides (Figure 26).

Keep the nozzle free of debris to prevent the motor from stalling

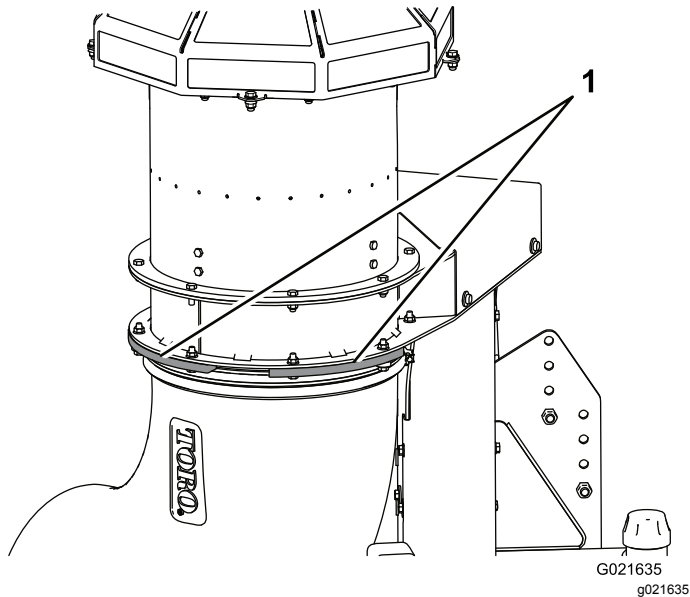


Figure 26

1. Nozzle guides

## Adjusting the Nozzle Belt

**Service Interval:** After the first 8 hours

Every 50 hours

Adjust the belt if the belt slips when changing direction of the nozzle.

1. Press the belt, at the center of the longest span, with 30 N·m (22 lb) of force (Figure 27).

**Note:** The belt should deflect 4.8 mm (0.19 inch).

2. If the deflection is incorrect, proceed to the next step. If it is correct, continue operation.

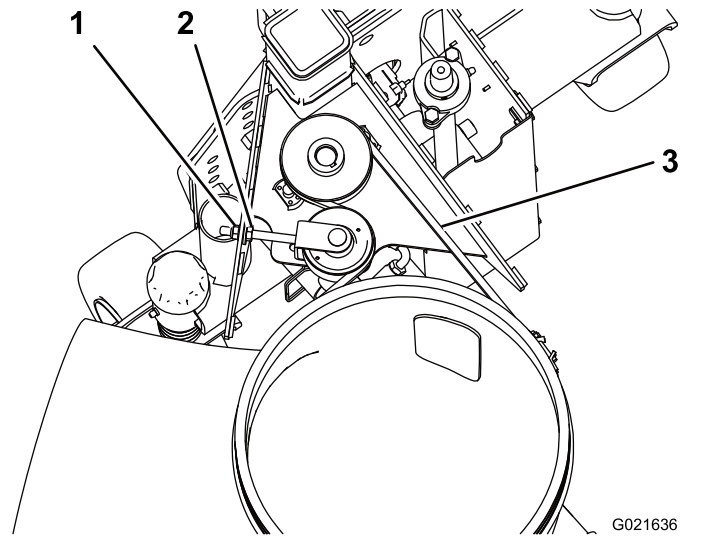


Figure 27

1. Flange nut
2. Hex nut
3. Depress belt here

3. Loosen the hex nut and tighten the flange nut to increase the belt tension (Figure 27).

**Note:** Do not over tighten.

4. Tighten the hex nut to lock the adjustment.

## Storage

1. Remove grass clippings, dirt, and grime from the external parts of the entire blower.

**Important:** You can wash the machine with mild detergent and water. Do not pressure wash the machine. Avoid excessive use of water.

2. Check and tighten all bolts and nuts. Replace any worn parts.
3. Paint all scratched or bare metal surfaces. Paint is available from your Authorized Service Dealer.
4. Store the machine in a clean, dry garage, or storage area. Use the jack stand to store the blower in the upright position. Do not lay the blower down on the ground.

# Declaration of Incorporation

The Toro Company, 8111 Lyndale Ave. South, Bloomington, MN, USA declares that the following unit(s) conform(s) to the directives listed, when installed in accordance with the accompanying instructions onto certain Toro models as indicated on the relevant Declarations of Conformity.

Model No.	Serial No.	Product Description	Invoice Description	General Description	Directive
44547	402900000 and Up	Pro Force Debris Blower	PROFORCE BLOWER-GM360	Debris Blower	2014/30/EU, 2000/14/EC

Relevant technical documentation has been compiled as required per Part B of Annex VII of 2006/42/EC.

We will undertake to transmit, in response to requests by national authorities, relevant information on this partly completed machinery. The method of transmission shall be electronic transmittal.

This machinery shall not be put into service until incorporated into approved Toro models as indicated on the associated Declaration of Conformity and in accordance with all instructions, whereby it can be declared in conformity with all relevant Directives.

Certified:



John Heckel  
Sr. Engineering Manager  
8111 Lyndale Ave. South  
Bloomington, MN 55420, USA  
August 1, 2018

Authorized Representative:

Marcel Dutrieux  
Manager European Product Integrity  
Toro Europe NV  
Nijverheidsstraat 5  
2260 Oevel  
Belgium

Tel. +32 16 386 659

# California Proposition 65 Warning Information

## What is this warning?

You may see a product for sale that has a warning label like the following:



**WARNING: Cancer and Reproductive Harm—[www.p65Warnings.ca.gov](http://www.p65Warnings.ca.gov).**

## What is Prop 65?

Prop 65 applies to any company operating in California, selling products in California, or manufacturing products that may be sold in or brought into California. It mandates that the Governor of California maintain and publish a list of chemicals known to cause cancer, birth defects, and/or other reproductive harm. The list, which is updated annually, includes hundreds of chemicals found in many everyday items. The purpose of Prop 65 is to inform the public about exposure to these chemicals.

Prop 65 does not ban the sale of products containing these chemicals but instead requires warnings on any product, product packaging, or literature with the product. Moreover, a Prop 65 warning does not mean that a product is in violation of any product safety standards or requirements. In fact, the California government has clarified that a Prop 65 warning "is not the same as a regulatory decision that a product is 'safe' or 'unsafe.'" Many of these chemicals have been used in everyday products for years without documented harm. For more information, go to <https://oag.ca.gov/prop65/faqs-view-all>.

A Prop 65 warning means that a company has either (1) evaluated the exposure and has concluded that it exceeds the "no significant risk level"; or (2) has chosen to provide a warning based on its understanding about the presence of a listed chemical without attempting to evaluate the exposure.

## Does this law apply everywhere?

Prop 65 warnings are required under California law only. These warnings are seen throughout California in a wide range of settings, including but not limited to restaurants, grocery stores, hotels, schools, and hospitals, and on a wide variety of products. Additionally, some online and mail order retailers provide Prop 65 warnings on their websites or in catalogs.

## How do the California warnings compare to federal limits?

Prop 65 standards are often more stringent than federal and international standards. There are various substances that require a Prop 65 warning at levels that are far lower than federal action limits. For example, the Prop 65 standard for warnings for lead is 0.5 µg/day, which is well below the federal and international standards.

## Why don't all similar products carry the warning?

- Products sold in California require Prop 65 labelling while similar products sold elsewhere do not.
- A company involved in a Prop 65 lawsuit reaching a settlement may be required to use Prop 65 warnings for its products, but other companies making similar products may have no such requirement.
- The enforcement of Prop 65 is inconsistent.
- Companies may elect not to provide warnings because they conclude that they are not required to do so under Prop 65; a lack of warnings for a product does not mean that the product is free of listed chemicals at similar levels.

## Why does Toro include this warning?

Toro has chosen to provide consumers with as much information as possible so that they can make informed decisions about the products they buy and use. Toro provides warnings in certain cases based on its knowledge of the presence of one or more listed chemicals without evaluating the level of exposure, as not all the listed chemicals provide exposure limit requirements. While the exposure from Toro products may be negligible or well within the "no significant risk" range, out of an abundance of caution, Toro has elected to provide the Prop 65 warnings. Moreover, if Toro does not provide these warnings, it could be sued by the State of California or by private parties seeking to enforce Prop 65 and subject to substantial penalties.



# The Toro Total Coverage Guarantee

## A Limited Warranty

### Conditions and Products Covered

The Toro Company and its affiliate, Toro Warranty Company, pursuant to an agreement between them, jointly warrant your Toro Commercial product ("Product") to be free from defects in materials or workmanship for two years or 1500 operational hours\*, whichever occurs first. This warranty is applicable to all products with the exception of Aerators (refer to separate warranty statements for these products). Where a warrantable condition exists, we will repair the Product at no cost to you including diagnostics, labor, parts, and transportation. This warranty begins on the date the Product is delivered to the original retail purchaser.

\* Product equipped with an hour meter.

### Instructions for Obtaining Warranty Service

You are responsible for notifying the Commercial Products Distributor or Authorized Commercial Products Dealer from whom you purchased the Product as soon as you believe a warrantable condition exists. If you need help locating a Commercial Products Distributor or Authorized Dealer, or if you have questions regarding your warranty rights or responsibilities, you may contact us at:

Toro Commercial Products Service Department  
Toro Warranty Company  
8111 Lyndale Avenue South  
Bloomington, MN 55420-1196  
952-888-8801 or 800-952-2740  
E-mail: commercial.warranty@toro.com

### Owner Responsibilities

As the Product owner, you are responsible for required maintenance and adjustments stated in your *Operator's Manual*. Failure to perform required maintenance and adjustments can be grounds for disallowing a warranty claim.

### Items and Conditions Not Covered

Not all product failures or malfunctions that occur during the warranty period are defects in materials or workmanship. This warranty does not cover the following:

- Product failures which result from the use of non-Toro replacement parts, or from installation and use of add-on, or modified non-Toro branded accessories and products. A separate warranty may be provided by the manufacturer of these items.
- Product failures which result from failure to perform recommended maintenance and/or adjustments. Failure to properly maintain your Toro product per the Recommended Maintenance listed in the *Operator's Manual* can result in claims for warranty being denied.
- Product failures which result from operating the Product in an abusive, negligent, or reckless manner.
- Parts subject to consumption through use unless found to be defective. Examples of parts which are consumed, or used up, during normal Product operation include, but are not limited to, brake pads and linings, clutch linings, blades, reels, rollers and bearings (sealed or greasable), bed knives, spark plugs, castor wheels and bearings, tires, filters, belts, and certain sprayer components such as diaphragms, nozzles, and check valves, etc.
- Failures caused by outside influence. Conditions considered to be outside influence include, but are not limited to, weather, storage practices, contamination, use of unapproved fuels, coolants, lubricants, additives, fertilizers, water, or chemicals, etc.
- Failure or performance issues due to the use of fuels (e.g. gasoline, diesel, or biodiesel) that do not conform to their respective industry standards.

### Countries Other than the United States or Canada

Customers who have purchased Toro products exported from the United States or Canada should contact their Toro Distributor (Dealer) to obtain guarantee policies for your country, province, or state. If for any reason you are dissatisfied with your Distributor's service or have difficulty obtaining guarantee information, contact the Toro importer.

- Normal noise, vibration, wear and tear, and deterioration.
- Normal "wear and tear" includes, but is not limited to, damage to seats due to wear or abrasion, worn painted surfaces, scratched decals or windows, etc.

### Parts

Parts scheduled for replacement as required maintenance are warranted for the period of time up to the scheduled replacement time for that part. Parts replaced under this warranty are covered for the duration of the original product warranty and become the property of Toro. Toro will make the final decision whether to repair any existing part or assembly or replace it. Toro may use remanufactured parts for warranty repairs.

### Deep Cycle and Lithium-Ion Battery Warranty:

Deep cycle and Lithium-Ion batteries have a specified total number of kilowatt-hours they can deliver during their lifetime. Operating, recharging, and maintenance techniques can extend or reduce total battery life. As the batteries in this product are consumed, the amount of useful work between charging intervals will slowly decrease until the battery is completely worn out. Replacement of worn out batteries, due to normal consumption, is the responsibility of the product owner. Battery replacement may be required during the normal product warranty period at owner's expense. Note: (Lithium-Ion battery only): A Lithium-Ion battery has a part only prorated warranty beginning year 3 through year 5 based on the time in service and kilowatt hours used. Refer to the *Operator's Manual* for additional information.

### Maintenance is at Owner's Expense

Engine tune-up, lubrication, cleaning and polishing, replacement of filters, coolant, and completing recommended maintenance are some of the normal services Toro products require that are at the owner's expense.

### General Conditions

Repair by an Authorized Toro Distributor or Dealer is your sole remedy under this warranty.

**Neither The Toro Company nor Toro Warranty Company is liable for indirect, incidental or consequential damages in connection with the use of the Toro Products covered by this warranty, including any cost or expense of providing substitute equipment or service during reasonable periods of malfunction or non-use pending completion of repairs under this warranty. Except for the Emissions warranty referenced below, if applicable, there is no other express warranty. All implied warranties of merchantability and fitness for use are limited to the duration of this express warranty.**

Some states do not allow exclusions of incidental or consequential damages, or limitations on how long an implied warranty lasts, so the above exclusions and limitations may not apply to you. This warranty gives you specific legal rights, and you may also have other rights which vary from state to state.

### Note regarding engine warranty:

The Emissions Control System on your Product may be covered by a separate warranty meeting requirements established by the U.S. Environmental Protection Agency (EPA) and/or the California Air Resources Board (CARB). The hour limitations set forth above do not apply to the Emissions Control System Warranty. Refer to the Engine Emission Control Warranty Statement supplied with your product or contained in the engine manufacturer's documentation for details